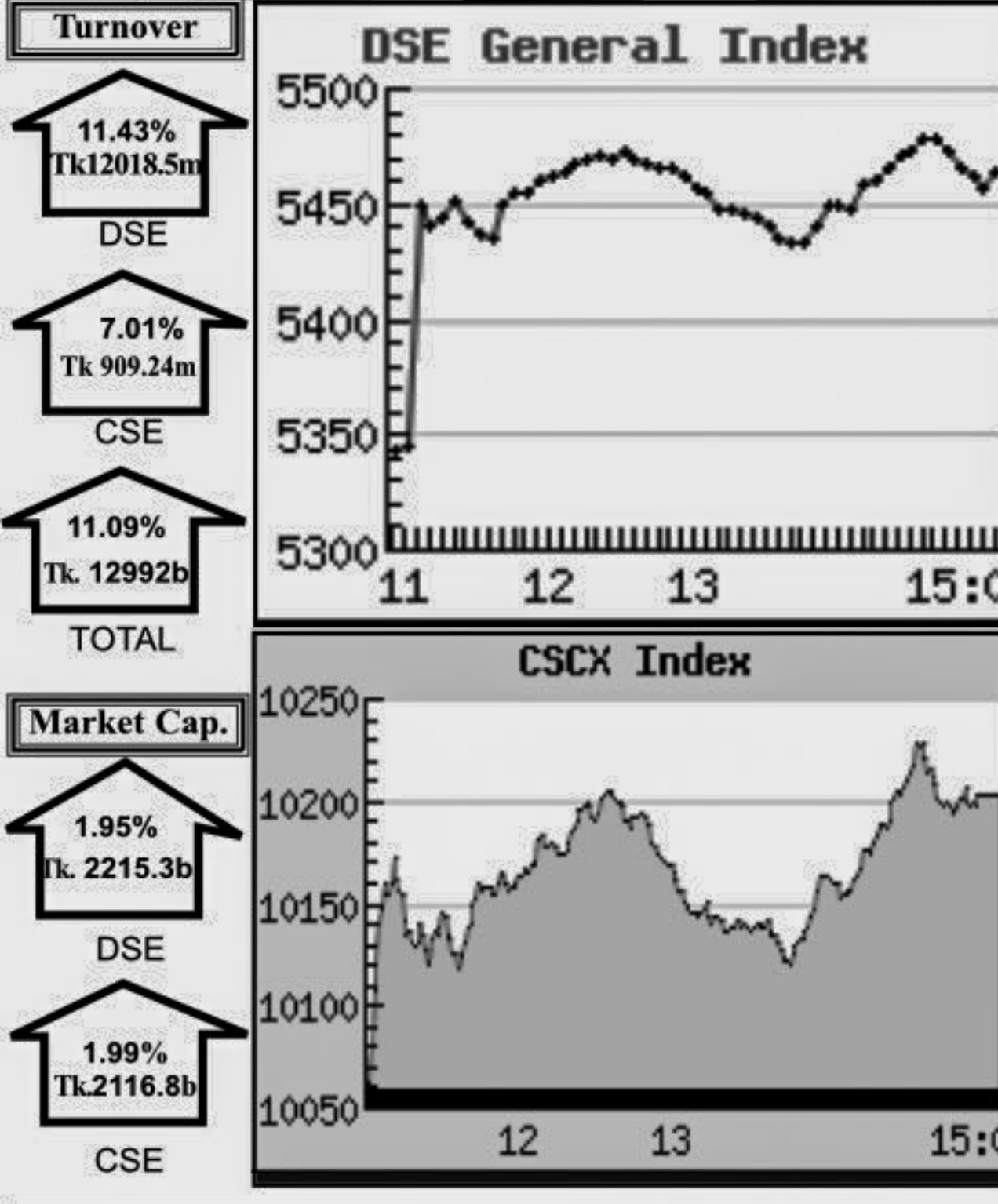
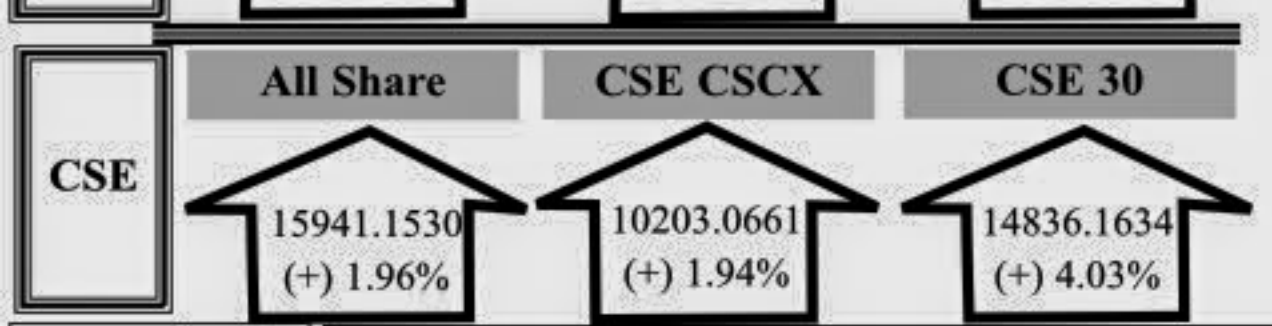


Capital Market Highlights: April 15, 2012

INDEX table with columns for All Share, DSE General, DSE 20, All Share, CSE CSCX, CSE 30.



Key Features - April 15, 2012

Table with 4 columns: Indicators, DSE, CSE, TOTAL. Rows include Turnover, No. of Contract, Traded Issues, etc.

Combined Turnover Leaders

Table of combined turnover leaders with columns for Company, Volume, Value, %of, Average Price.

Sectoral Turnover Summary

Table of sectoral turnover with columns for Sector, DSE, CSE, Total, Mil. Tk., %.

Sectoral P/E & EPS

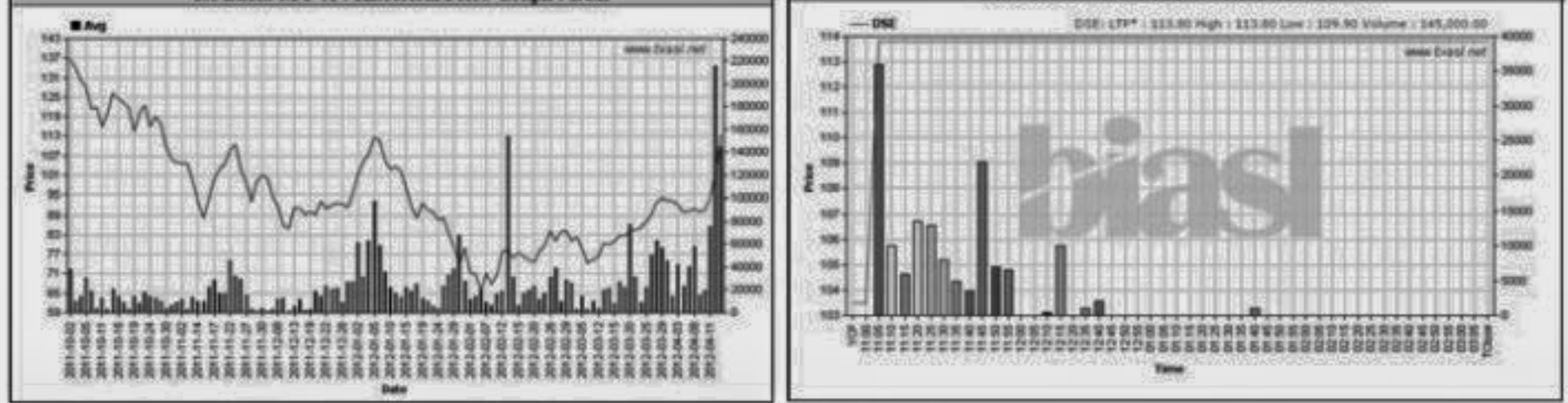
Table of sectoral P/E and EPS with columns for Sector, P/E, EPS(%) DSE, CSE.

All the above PE and EPS are estimated to get a relative idea only and not calculated by any of the stock exchanges.

Prepared exclusively for Daily Star by Business Information Automation Service Line (BIASL)...

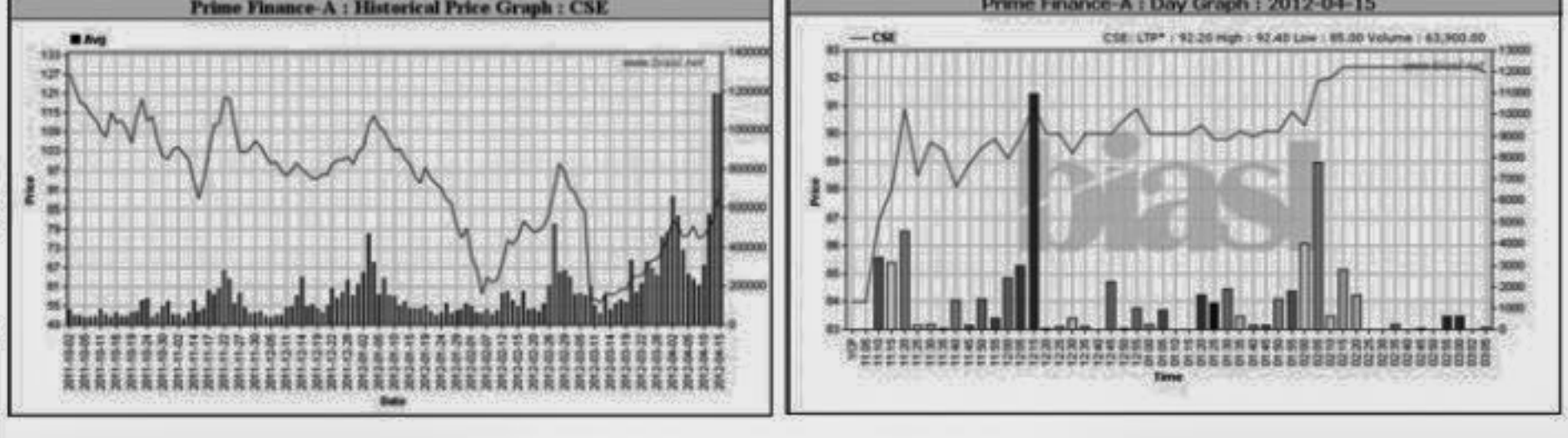
Capital Gainers

Table of Dhaka Stock Exchange Capital Gainers with columns for Company, Price Chn. (%), Price Scale, Turnover, BookV, EPS, PE.



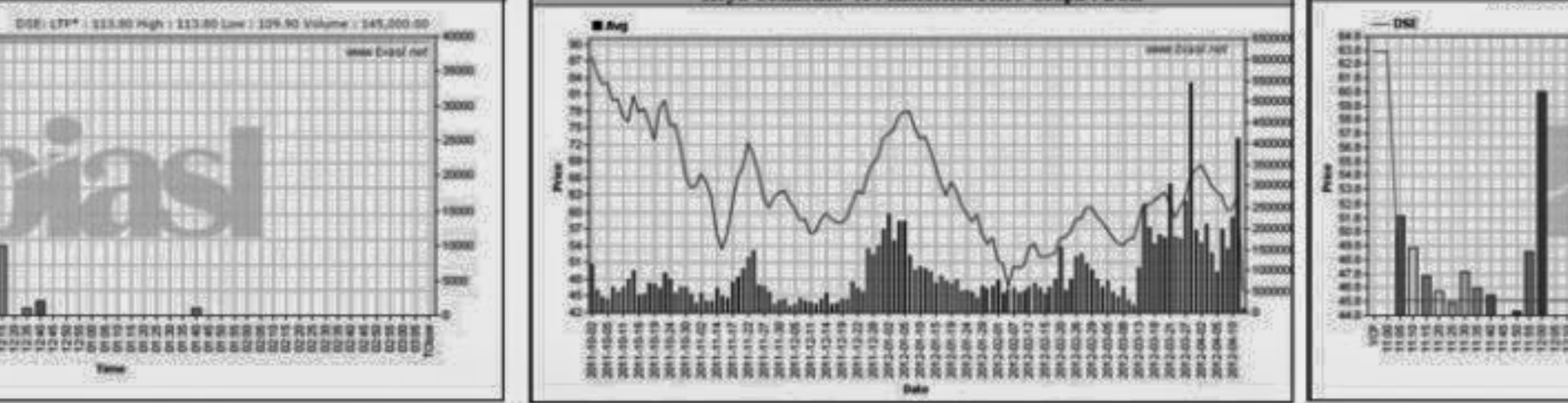
Chittagong Stock Exchange

Table of Chittagong Stock Exchange Capital Gainers with columns for Company, Price Chn. (%), Price Scale, Turnover, BookV, EPS, PE.



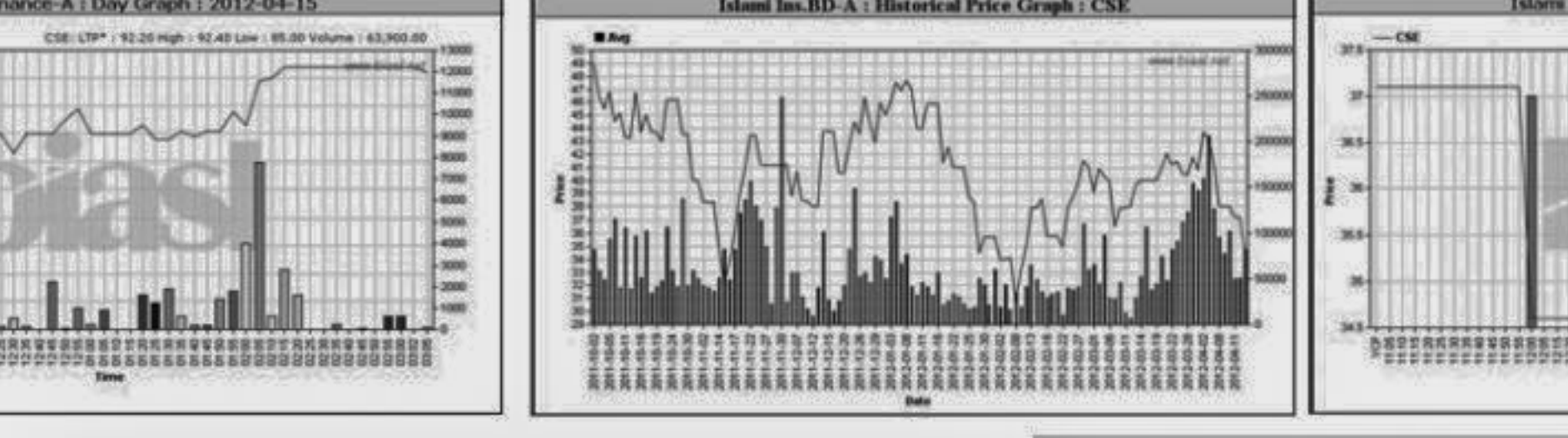
Capital Losers

Table of Dhaka Stock Exchange Capital Losers with columns for Company, Price Chn. (%), Price Scale, Turnover, BookV, EPS, PE.



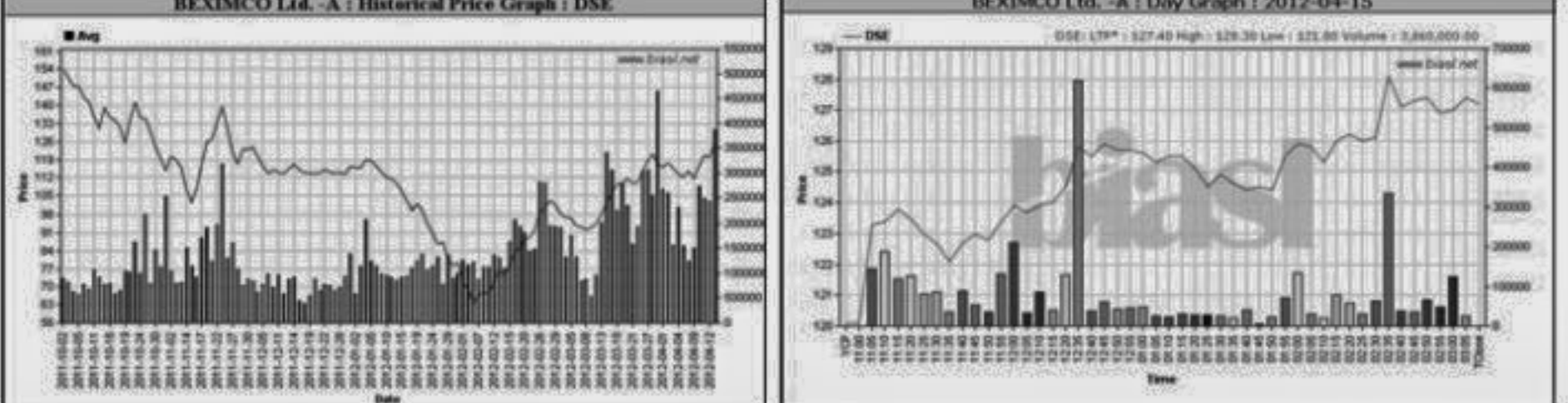
Chittagong Stock Exchange

Table of Chittagong Stock Exchange Capital Losers with columns for Company, Price Chn. (%), Price Scale, Turnover, BookV, EPS, PE.



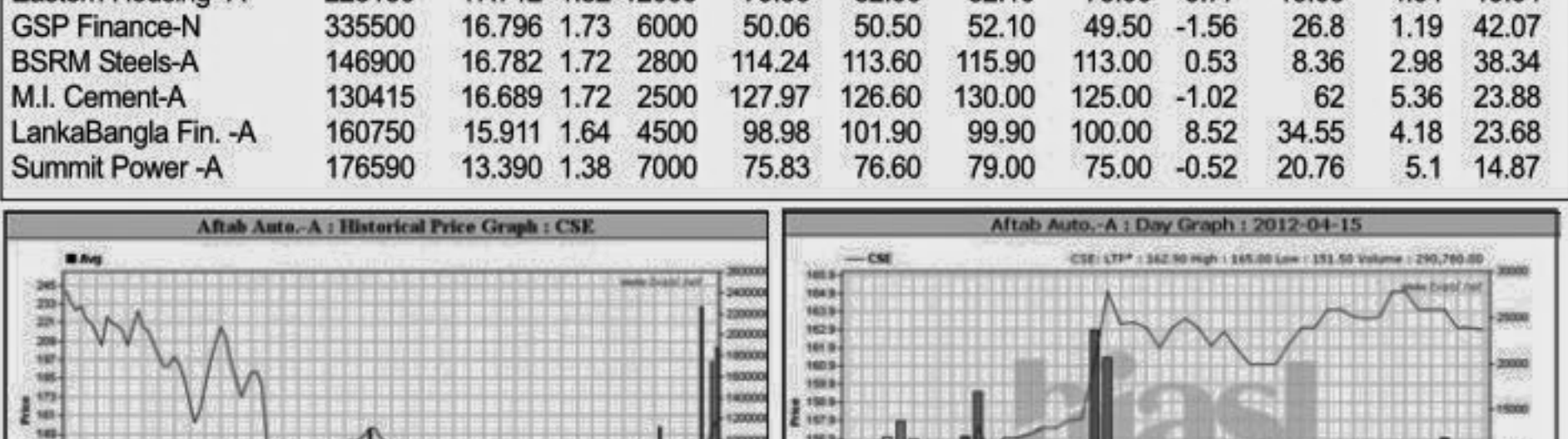
Turnover Leaders

Table of Dhaka Stock Exchange Turnover Leaders with columns for Company, Vol., Value, % of, Price Scale, C.Price, BookV, EPS, PE.



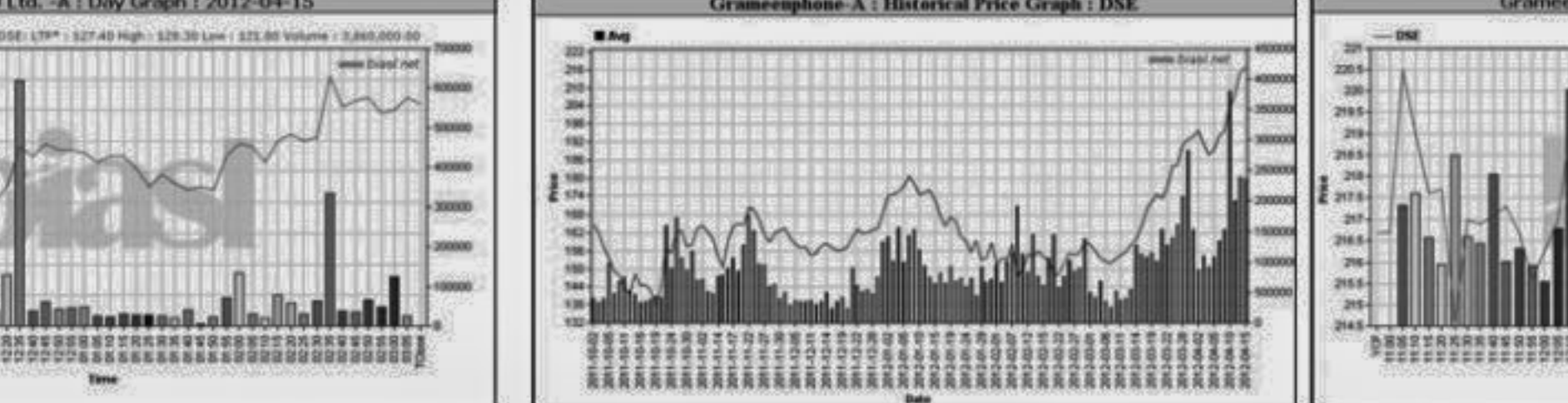
Chittagong Stock Exchange

Table of Chittagong Stock Exchange Turnover Leaders with columns for Company, Vol., Value, % of, Price Scale, C.Price, BookV, EPS, PE.



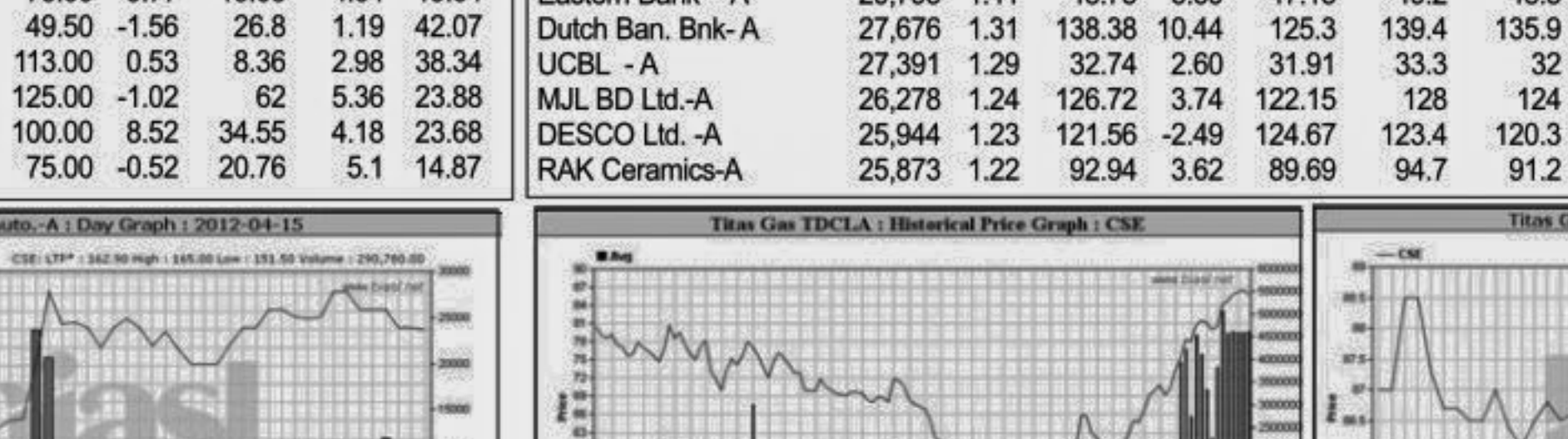
Market Cap. Leader

Table of Dhaka Stock Exchange Market Cap. Leaders with columns for Company, Market Cap., % of, Average, Price Scale, BookV, EPS, PE.



Chittagong Stock Exchange

Table of Chittagong Stock Exchange Market Cap. Leaders with columns for Company, Market Cap., % of, Average, Price Scale, BookV, EPS, PE.



When to buy or sell

Investors follow many calculations of corporate performance when deciding if a stock is undervalued or overvalued. These range from the simple price-earnings ratio, or P/E, to far more technical ways of attempting to discern whether a stock is trending up or down.



Notes: Capital Gainer / Loser tables are prepared on the basis of the close price change of the traded issues. "Close" or "C.Price" or "D Clo." is the Closing Price of the day.