

### Capital Market Highlights: March 27, 2012

| INDEX      |                                      |  |                                   |
|------------|--------------------------------------|--|-----------------------------------|
| <b>DSE</b> | All Share<br>4125.91982<br>(+) 1.46% | DSE General<br>4939.00341<br>(+) 1.55% | DSE 20<br>3799.18444<br>(+) 1.14% |
| <b>CSE</b> | All Share<br>14300.3971<br>(+) 1.24% | CSE CSCX<br>9180.0879<br>(+) 1.29%     | CSE 30<br>13211.2528<br>(+) 2.13% |

|                    |                        |                        |                          |
|--------------------|------------------------|------------------------|--------------------------|
| <b>Turnover</b>    | DSE: 8.84% Tk.7521.89m | CSE: 10.91% Tk.712.42m | TOTAL: 9.01% Tk.8234.32m |
| <b>Market Cap.</b> | DSE: 1.25% Tk.1981.1b  | CSE: 1.25% Tk.1914.2b  |                          |

#### Key Features - March 27, 2012

| Indicators                         | DSE         | CSE        | TOTAL       |
|------------------------------------|-------------|------------|-------------|
| Turnover (Million Taka)            | 7,521.89    | 712.42     | 8,234.32    |
| Turnover (Volume)                  | 150,583,426 | 16,626,070 | 167,209,496 |
| No. of Contract                    | 176,541     | 25,460     | 202,001     |
| Traded Issues                      | 266         | 196        | 266         |
| Issue Gain (Avg. Price Basis)      | 174         | 123        | 174         |
| Issue Loss (Avg. Price Basis)      | 86          | 73         | 86          |
| Unchanged Issue (Avg. Price Basis) | 6           | -          | 6           |
| Market Cap. Equity (Billion. Tk.)  | 1,981.08    | 1,914.15   | 1,981.08    |
| Market Cap. Equity (Billion US\$)  | 25.56       | 24.70      | 25.56       |

#### Combined Turnover Leaders

| Company                 | Volume (Share) | Value (M. Taka) | % of Total | Average Price |
|-------------------------|----------------|-----------------|------------|---------------|
| BEXIMCO Ltd. -A         | 3534495        | 418.40          | 5.08       | 118.38        |
| Grameenphone-A          | 1742514        | 321.07          | 3.90       | 184.25        |
| Titas Gas TDCLA         | 4037600        | 303.75          | 3.69       | 75.23         |
| UNITED AIR-A            | 10941486       | 235.75          | 2.86       | 21.55         |
| Jamuna Oil -A           | 964336         | 208.98          | 2.54       | 216.71        |
| UCBL -A                 | 5583383        | 208.96          | 2.54       | 37.43         |
| MJL BD Ltd.-A           | 1818483        | 195.71          | 2.38       | 107.90        |
| National Bank -A        | 4869857        | 186.43          | 2.26       | 38.28         |
| Keya Cosmetics -A       | 2915756        | 182.45          | 2.22       | 62.58         |
| M.I. Cement-A           | 1561705        | 163.75          | 1.99       | 104.85        |
| Summit Power -A         | 2315234        | 160.46          | 1.95       | 69.3          |
| Khulna Power-A          | 1896172        | 130.70          | 1.59       | 68.93         |
| Beximco Pharma -A       | 1397219        | 123.00          | 1.49       | 88.04         |
| Prime Bank-A            | 3074912        | 122.87          | 1.49       | 39.96         |
| LafargeS Cement-Z       | 4354000        | 120.75          | 1.47       | 27.73         |
| Square Pharma -A        | 472807         | 109.98          | 1.34       | 232.6         |
| R. N. Spinning-A        | 2906643        | 108.17          | 1.31       | 37.21         |
| Aftab Auto.-A           | 787561         | 99.66           | 1.21       | 126.54        |
| City Bank -A            | 2204278        | 97.66           | 1.19       | 44.3          |
| Beacon Pharma Ltd.-B    | 3565700        | 96.72           | 1.17       | 27.13         |
| Fu-wang Ceramic-A       | 2485215        | 96.24           | 1.17       | 38.73         |
| People's Leasing-A      | 1531534        | 95.99           | 1.17       | 62.68         |
| Islamic Bank BD -A      | 1720130        | 95.87           | 1.16       | 55.74         |
| ConfidenceCement-A      | 750198         | 95.51           | 1.16       | 127.32        |
| Social Islami. B-A      | 4001742        | 91.47           | 1.11       | 22.86         |
| Premier Leasing-A       | 2628430        | 84.67           | 1.03       | 32.21         |
| BSRM Steels-A           | 853000         | 84.24           | 1.02       | 98.75         |
| Active Fine Chem.-A     | 1278400        | 83.90           | 1.02       | 65.63         |
| CMC Kamal Tex. -A       | 2166828        | 82.42           | 1.00       | 38.04         |
| National Housing Fin.-A | 870250         | 78.77           | 0.96       | 90.51         |

#### Sectoral Turnover Summary

| Sector                 | DSE         |       | CSE       |       | Total     |       |
|------------------------|-------------|-------|-----------|-------|-----------|-------|
|                        | Mill. (Tk.) | %     | Mill. Tk. | %     | Mill. Tk. | %     |
| Bank                   | 1508.45     | 20.05 | 189.16    | 26.55 | 1697.61   | 20.62 |
| NBFI                   | 665.19      | 8.84  | 53.61     | 7.53  | 718.81    | 8.73  |
| Investment             | 118.57      | 1.58  | 6.76      | 0.95  | 125.32    | 1.52  |
| Engineering            | 557.64      | 7.41  | 52.02     | 7.30  | 609.66    | 7.40  |
| Food & Allied          | 132.28      | 1.76  | 8.07      | 1.13  | 140.35    | 1.70  |
| Fuel & Power           | 1183.99     | 15.74 | 69.06     | 9.69  | 1253.05   | 15.22 |
| Jute                   | 5.32        | 0.07  | -         | -     | 5.32      | 0.06  |
| Textile                | 593.04      | 7.88  | 55.04     | 7.73  | 648.08    | 7.87  |
| Pharma & Chemical      | 648.13      | 8.62  | 61.96     | 8.70  | 710.09    | 8.62  |
| Paper & Packaging      | 0.43        | 0.01  | 6.50      | 0.91  | 6.93      | 0.08  |
| Service                | 94.11       | 1.25  | 0.99      | 0.14  | 95.10     | 1.15  |
| Leather                | 52.09       | 0.69  | 11.86     | 1.67  | 63.95     | 0.78  |
| Ceramic                | 187.18      | 2.49  | 57.50     | 8.07  | 244.69    | 2.97  |
| Cement                 | 360.15      | 4.79  | 2.75      | 0.39  | 362.90    | 4.41  |
| Information Technology | 38.34       | 0.51  | 19.62     | 2.75  | 57.96     | 0.70  |
| General Insurance      | 341.95      | 4.55  | 1.22      | 0.17  | 343.17    | 4.17  |
| Life Insurance         | 109.52      | 1.46  | 22.67     | 3.18  | 132.19    | 1.61  |
| Telecom                | 298.40      | 3.97  | 34.26     | 4.81  | 332.66    | 4.04  |
| Travel & Leisure       | 201.49      | 2.68  | 59.25     | 8.32  | 260.74    | 3.17  |
| Miscellaneous          | 420.22      | 5.59  | 0.11      | 0.02  | 420.34    | 5.10  |
| Debtenture             | 5.41        | 0.07  | 0.00      | 0.00  | 5.41      | 0.07  |

#### Sectoral P/E & EPS

| Sector            | P/E   |       | EPS(%) |        |
|-------------------|-------|-------|--------|--------|
|                   | DSE   | CSE   | DSE    | CSE    |
| Bank              | 10.06 | 10.06 | 36.21  | 36.21  |
| NBFI              | 17.43 | 16.95 | 44.16  | 45.38  |
| Investment        | 6.35  | 6.41  | 16.80  | 16.80  |
| Engineering       | 20.12 | 20.36 | 44.77  | 42.72  |
| Food & Allied     | 16.40 | 16.41 | 114.52 | 116.23 |
| Fuel & Power      | 14.33 | 14.35 | 64.59  | 64.60  |
| Textile           | 12.18 | 11.72 | 23.18  | 23.07  |
| Pharma & Chemical | 22.93 | 22.03 | 65.57  | 57.17  |
| Paper & Printing  | 23.78 | 24.07 | 12.41  | 13.27  |
| Service           | 25.57 | 25.17 | 23.83  | 23.83  |
| Leather           | 12.95 | 12.96 | 108.19 | 134.08 |
| Ceramic           | 27.60 | 27.54 | 23.12  | 23.12  |
| Cement            | 18.65 | 18.65 | 67.36  | 67.36  |
| IT                | 19.81 | 19.69 | 12.37  | 12.37  |
| General Insurance | 18.54 | 18.29 | 32.27  | 32.89  |
| Life Insurance    | 19.99 | 20.00 | 95.84  | 95.84  |
| Telecom           | 13.17 | 13.13 | 139.90 | 139.90 |
| Travel & Leisure  | 20.71 | 30.37 | 9.85   | 7.10   |
| Miscellaneous     | 7.30  | 7.24  | 135.85 | 131.94 |
| Stock Exchanges   | 13.16 | 12.96 | 45.07  | 44.88  |

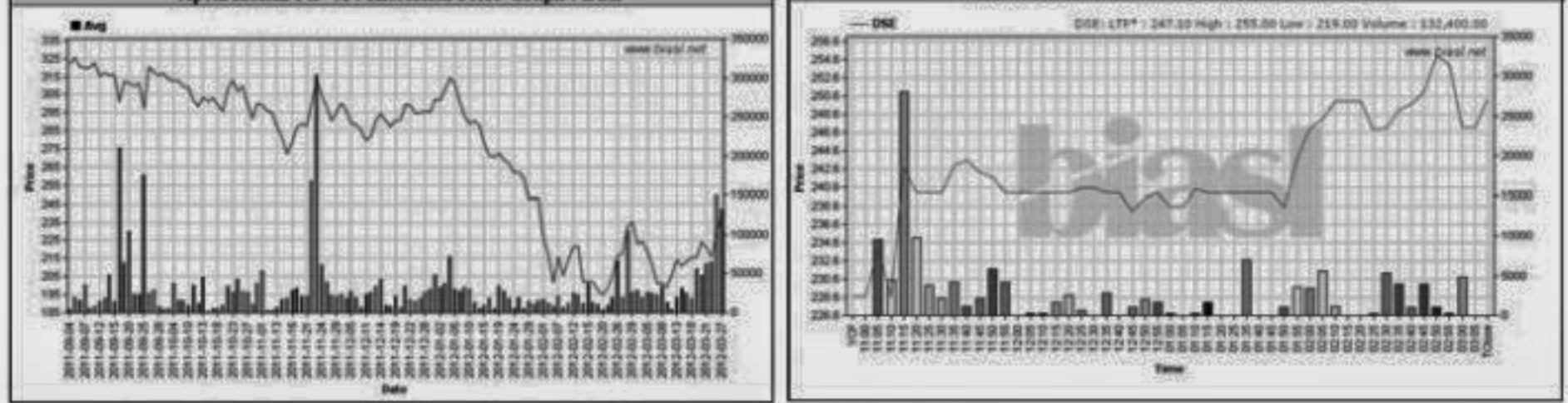
All the above PE and EPS are estimated to get a relative idea only and not calculated by any of the stock exchanges.

Prepared exclusively for Daily Star by Business Information Automation Service Line (BIASL) on the basis of information collected from daily stock quotations and audited reports of the listed companies. High level of caution has been taken to collect and present the above information and data. The publisher will not take any responsibility if any body uses this information and data for his/her investment decision. For any query please email to biasl@bol-online.com or call 01552153562 or go to www.biasl.net

### Capital Gainers

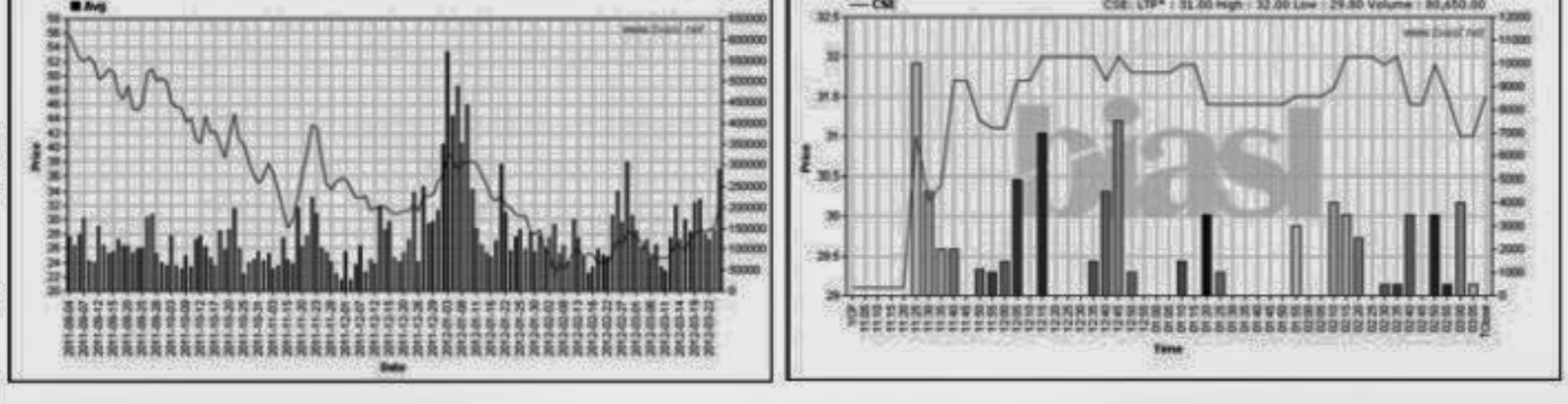
#### Dhaka Stock Exchange

| Company             | Price Chn. (%) |      | Price Scale |        |        |        | Turnover |       | BookV  |        |       |        |
|---------------------|----------------|------|-------------|--------|--------|--------|----------|-------|--------|--------|-------|--------|
|                     | Close          | Avg. | Avg.        | Close  | DayHi  | DayLo  | Yr Hi    | YrLo  | M.Tk   | Per S  | EPS   | PE     |
| Kohinoor Chem -A    | 9.53           | 2.71 | 188.99      | 201.20 | 201.20 | 185.00 | 301.4    | 158.0 | 45.481 | -13.07 | 7.41  | 25.50  |
| ApexAdelchi Ftr -A  | 9.40           | 5.46 | 239.76      | 250.20 | 255.00 | 219.00 | 354.0    | 192.0 | 31.744 | 185    | 23.2  | 10.33  |
| Atlas BD-A          | 8.70           | 7.70 | 205.03      | 208.60 | 209.40 | 188.00 | 400.0    | 147.2 | 16.186 | 56.26  | 16.77 | 12.23  |
| Purabi G Insu-A     | 7.71           | 8.26 | 102.70      | 102.00 | 104.10 | 87.50  | 194.7    | 73.1  | 7.536  | 20.34  | 7.87  | 13.05  |
| Midas Financing-A   | 7.54           | 5.27 | 56.72       | 58.50  | 59.00  | 52.90  | 148.8    | 38.3  | 10.216 | 13.24  | 1.21  | 46.88  |
| Salvo Chemicals-Z   | 6.85           | 7.16 | 31.27       | 31.20  | 32.00  | 26.50  | 78.5     | 21.1  | 9.012  | 11.48  | 1.36  | 22.99  |
| Dhaka Ins. Ltd.-A   | 6.69           | 5.08 | 94.06       | 95.70  | 96.90  | 89.30  | 310.0    | 61.0  | 19.235 | 29.33  | 10.95 | 8.59   |
| National Tubes -A   | 6.61           | 4.39 | 49.18       | 50.00  | 51.00  | 45.00  | 141.8    | 36.1  | 2.448  | 28.9   | -0.72 | -68.31 |
| Bangladesh Lamps -A | 6.60           | 5.06 | 212.91      | 218.10 | 220.00 | 204.80 | 265.7    | 128.4 | 13.669 | 114.29 | 6.54  | 32.56  |
| Eastern Bank -A     | 6.36           | 3.46 | 42.42       | 43.50  | 43.90  | 41.00  | 72.9     | 34.0  | 54.951 | 23.87  | 4.14  | 10.25  |



### Chittagong Stock Exchange

| Company              | Price Chn. (%) |      | Price Scale |        |        |        | Turnover |       | BookV |        |       |       |
|----------------------|----------------|------|-------------|--------|--------|--------|----------|-------|-------|--------|-------|-------|
|                      | Close          | Avg. | Avg.        | Close  | DayHi  | DayLo  | Yr Hi    | YrLo  | M.Tk  | Per S  | EPS   | PE    |
| Kohinoor Chem -A     | 8.65           | 8.63 | 217.25      | 217.30 | 217.50 | 215.00 | 350.0    | 350.0 | 0.109 | -13.07 | 7.41  | 29.32 |
| Salvo Chemicals-Z    | 8.25           | 8.58 | 31.51       | 31.50  | 32.00  | 29.80  | 79.0     | 20.0  | 2.541 | 11.48  | 1.36  | 23.17 |
| Janata Insur -A      | 7.97           | 7.52 | 292.77      | 294.00 | 294.50 | 289.80 | 1900.0   | 215.0 | 0.088 | 171.32 | 5.73  | 51.09 |
| Eastern Bank -A      | 6.88           | 3.38 | 42.26       | 43.50  | 43.90  | 40.50  | 73.0     | 35.0  | 6.221 | 23.87  | 4.14  | 10.21 |
| Midas Financing-A    | 6.85           | 4.12 | 55.84       | 57.70  | 57.90  | 53.90  | 149.4    | 40.4  | 0.999 | 13.24  | 1.21  | 46.15 |
| Ambee Pharma -A      | 6.06           | 3.19 | 331.58      | 339.40 | 341.00 | 320.00 | 690.0    | 268.0 | 1.920 | 21.4   | 3.68  | 90.10 |
| ApexAdelchi Ftr -A   | 5.93           | 5.30 | 247.45      | 250.00 | 250.00 | 222.00 | 260.0    | 298.6 | 0.544 | 185    | 23.2  | 10.67 |
| City Bank -A         | 5.40           | 5.05 | 44.51       | 44.90  | 45.20  | 42.50  | 65.0     | 29.4  | 9.107 | 35.44  | 4.07  | 10.94 |
| Dhaka Ins. Ltd.-A    | 5.20           | 6.53 | 95.56       | 95.00  | 97.00  | 95.00  | 98.0     | 98.0  | 0.334 | 29.33  | 10.95 | 8.73  |
| Standard Insurance-A | 4.94           | 5.11 | 44.63       | 44.60  | 45.00  | 44.40  | 42.0     | 42.0  | 0.558 | 12.97  | 1.86  | 23.99 |



### Turnover Leaders

#### Dhaka Stock Exchange

| Company           | Vol. Share | Value (M. Tk.) | % of Total | Big Lot | Price Scale |        |        | C. Pct | BookV |       |       |       |
|-------------------|------------|----------------|------------|---------|-------------|--------|--------|--------|-------|-------|-------|-------|
|                   |            |                |            |         | Avg. Close  | DayHi  | DayLo  |        |       |       |       |       |
| BEXIMCO Ltd. -A   | 3063615    | 362.843        | 4.82       | -       | 118.44      | 119.10 | 126.20 | 103.70 | 3.39  | 49.26 | 19.28 | 6.14  |
| Grameenphone-A    | 1619114    | 298.399        | 3.97       | -       | 184.30      | 184.30 | 185.80 | 175.00 | 0.00  | 28.8  | 13.99 | 13.17 |
| Titas Gas TDCLA   | 3935850    | 296.096        | 3.94       | -       | 75.23       | 75.70  | 76.40  | 67.00  | 3.56  | 29.98 | 9.74  | 7.72  |
| Jamuna Oil -A     | 931608     | 201.911        | 2.68       | -       | 216.73      | 222.40 | 226.00 | 200.00 | 4.07  | 40.19 | 14.45 | 15.00 |
| UNITED AIR-A      | 9351334    | 201.486        | 2.68       | -       | 21.55       | 21.40  | 22.00  | 19.80  | 0.00  | 12.64 | 0.71  | 30.35 |
| MJL BD Ltd.-A     | 1613915    | 173.744        | 2.31       | -       | 107.65      | 109.60 | 112.90 | 96.40  | 2.33  | 18.84 | 3.15  | 34.17 |
| National Bank -A  | 4443302    | 170.009        | 2.26       | -       | 38.26       | 38.70  | 40.00  | 37.00  | 2.38  | 15.16 | 4.28  | 8.94  |
| UCBL -A           | 4504471    | 168.681        | 2.24       | -       | 37.45       | 37.80  | 39.50  | 32.80  | 8.85  | 21.95 | 4.2   | 8.92  |
| Keya Cosmetics -A | 2637996    | 165.092        | 2.19       | -       | 62.58       | 63.20  | 64.00  | 56.10  | 3.61  | 20.69 | 3.63  | 17.24 |
| Summit Power -A   | 2192704    | 151.886        | 2.02       | -       | 69.27       | 68.60  | 71.10  | 66.00  | -0.44 | 20.76 | 5.1   | 13.58 |
| M.I. Cement-A     | 1385915    | 145.277        | 1.93       | -       | 104.82      | 105.00 | 108.00 | 96.00  | -0.09 | 62    | 5.36  | 19.56 |
| Prime Bank-A      | 3028412    | 121.018        | 1.61       | -       | 39.96       | 40.00  | 42.00  | 38.20  | 2.66  | 19.8  | 3.98  | 10.04 |
| Khulna Power-A    | 1727436    | 119.093        | 1.58       | -       | 68.94       | 69.00  | 70.10  | 65.00  | 6.02  | 12.57 | 2.25  | 30.64 |
| Beximco Pharma -A | 1285789</  |                |            |         |             |        |        |        |       |       |       |       |