

Capital Market Highlights: March 21, 2012

INDEX		
DSE	All Share 3934.75680 (-) 1.39%	DSE General 4700.24351 (-) 1.45%
CSE	All Share 13578.3313 (-) 1.25%	CSE 30 12432.6026 (-) 0.75%

Turnover		
DSE	16.87% Tk 4780.75m	
CSE	15.09% Tk 533.22m	
TOTAL	16.69% Tk 5313.98b	

Market Cap.		
DSE	1.23% Tk 1884.5b	
CSE	1.21% Tk 1821.4b	

Key Features - March 21, 2012

Indicators	DSE	CSE	TOTAL
Turnover (Million Taka)	4,780.75	533.22	5,313.97
Turnover (Volume)	95,011,522	12,196,170	107,207,692
No. of Contract	133,774	20,936	154,710
Traded Issues	262	193	262
Issue Gain (Avg. Price Basis)	93	64	93
Issue Loss (Avg. Price Basis)	164	126	164
Unchanged Issue (Avg. Price Basis)	5	3	5
Market Cap. Equity (Billion. Tk.)	1,884.54	1,821.45	1,884.54
Market Cap. Equity (Billion US\$)	24.32	23.50	24.32

Combined Turnover Leaders

Company	Volume (Share)	Value (M. Taka)	% of Total	Average Price
Grameenphone-A	1704885	295.12	5.55	173.1
BEXIMCO Ltd. -A	1918981	210.45	3.96	109.67
Keya Cosmetics -A	3295367	203.64	3.83	61.8
Summit Power -A	2193178	177.27	3.34	80.83
M.I. Cement-A	1662315	164.16	3.09	98.76
UNITED AIR-A	6609277	140.08	2.64	21.2
Jamuna Oil -A	675304	133.73	2.52	198.03
ConfidenceCement-A	1032596	121.67	2.29	117.83
MJL BD Ltd.-A	1020777	100.33	1.89	98.29
Islami Bank BD -A	1631480	90.42	1.70	55.42
Aftab Auto.-A	742906	88.54	1.67	119.18
Golden Son -A	1444268	87.57	1.65	60.63
BSRM Steels-A	785600	85.91	1.62	109.36
People's Leasing-A	1282946	78.10	1.47	60.88
Titas Gas TDCLA	1076350	74.74	1.41	69.44
UCBL -A	2043366	72.99	1.37	35.72
National Bank -A	1904889	72.74	1.37	38.19
Fu-wang Ceramic-A	1834000	70.02	1.32	38.18
Barakatullah E. D.-A	1402320	60.73	1.14	43.31
CMC Kamal Tex. -A	1709123	59.58	1.12	34.86
Square Pharma -A	250310	55.36	1.04	221.17
LafargeS Cement-Z	1891500	52.28	0.98	27.64
Beximco Pharma -A	610595	51.76	0.97	84.77
Social Islami. B-A	2275712	51.58	0.97	22.66
Zahintex Ind.-N	1197500	50.73	0.95	42.36
LankaBangla Fin. -A	708075	50.72	0.95	71.63
One Bank -A	1538660	50.51	0.95	32.83
Mercantile Bank -A	2051747	48.95	0.92	23.86
Fu-Wang Food A	1153180	48.83	0.92	42.35
Bay Leasing -A	813650	48.78	0.92	59.95

Sectoral Turnover Summary

Sector	DSE		CSE		Total	
	Mill. (Tk)	%	Mill. Tk.	%	Mill. Tk.	%
Bank	795.05	16.63	132.82	24.91	927.88	17.46
NBFI	454.11	9.50	45.84	8.60	499.95	9.41
Investment	78.93	1.65	5.56	1.04	84.49	1.59
Engineering	453.33	9.48	45.54	8.54	498.88	9.39
Food & Allied	107.82	2.26	7.43	1.39	115.25	2.17
Fuel & Power	608.79	12.73	45.68	8.57	654.47	12.32
Jute	4.25	0.09			4.25	0.08
Textile	366.93	7.68	34.71	6.51	401.63	7.56
Pharma & Chemical	395.59	8.27	46.17	8.66	441.76	8.31
Paper & Packaging	0.13	0.00	6.81	1.28	6.94	0.13
Service	48.20	1.01	1.56	0.29	49.76	0.94
Leather	33.77	0.71	11.96	2.24	45.73	0.86
Ceramic	129.50	2.71	33.30	6.24	162.80	3.06
Cement	364.12	7.62	3.40	0.64	367.52	6.92
Information Technology	30.10	0.63	15.78	2.96	45.89	0.86
General Insurance	235.64	4.93	1.98	0.37	237.63	4.47
Life Insurance	60.61	1.27	29.97	5.62	90.58	1.70
Telecom	265.15	5.55	22.56	4.23	287.72	5.41
Travel & Leisure	117.52	2.46	41.97	7.87	159.49	3.00
Miscellaneous	223.46	4.67	0.18	0.03	223.64	4.21
Debtenture	7.75	0.16	0.00	0.00	7.75	0.15

Sectoral P/E & EPS

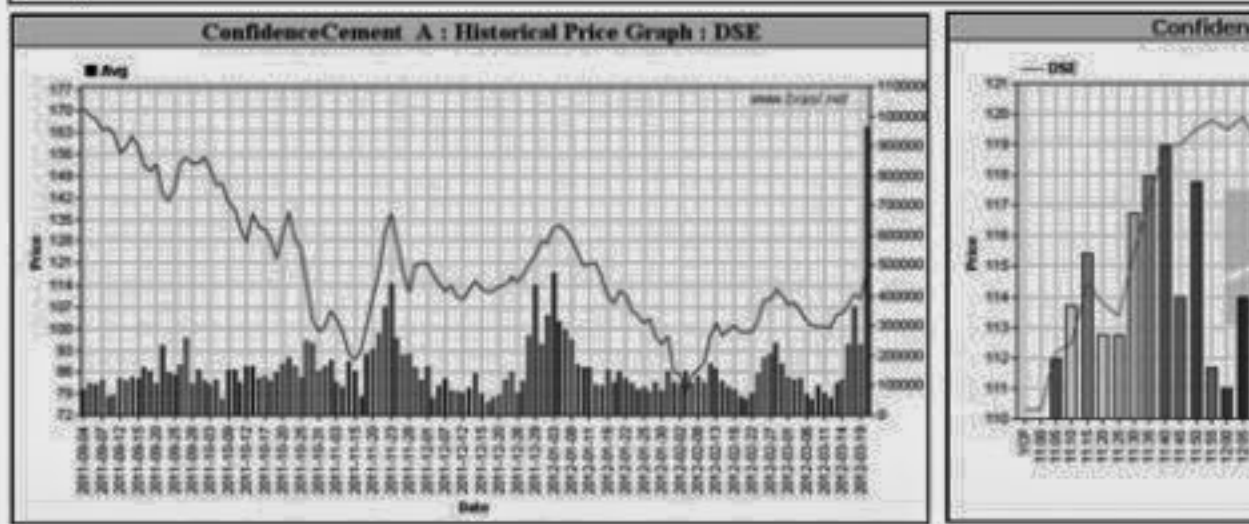
Sector	P/E		EPS(%)	
	DSE	CSE	DSE	CSE
Bank	9.60	9.57	37.13	37.13
NBFI	16.40	16.08	44.35	45.58
Investment	6.21	6.31	16.80	16.80
Engineering	20.36	20.75	44.72	42.66
Food & Allied	16.23	16.05	114.52	116.23
Fuel & Power	13.34	13.32	66.87	66.88
Textile	11.62	11.18	23.18	23.07
Pharma & Chemical	22.08	21.28	65.51	57.11
Paper & Printing	23.04	24.55	12.41	13.27
Service	24.14	23.79	23.83	23.83
Leather	13.08	13.16	104.33	129.27
Ceramic	25.17	25.00	23.12	23.12
Cement	17.79	17.60	67.36	67.36
IT	19.64	19.71	12.37	12.37
General Insurance	17.97	17.59	32.73	33.42
Life Insurance	19.31	19.48	95.84	95.84
Telecom	12.37	12.37	139.90	139.90
Travel & Leisure	20.38	29.89	9.85	7.10
Miscellaneous	6.82	6.82	135.85	131.94
Stock Exchanges	12.50	12.31	45.68	45.50

All the above PE and EPS are estimated to get a relative idea only and not calculated by any of the stock exchanges.

Prepared exclusively for Daily Star by Business Information Automation Service Line (BIASL), on the basis of information collected from daily stock quotations and audited reports of the listed companies. High level of caution has been taken to collect and present the above information and data. The publisher will not take any responsibility if any body uses this information and data for his/her investment decision. For any query please email to biasl@bol-online.com or call 0152153562 or go to www.biasl.net

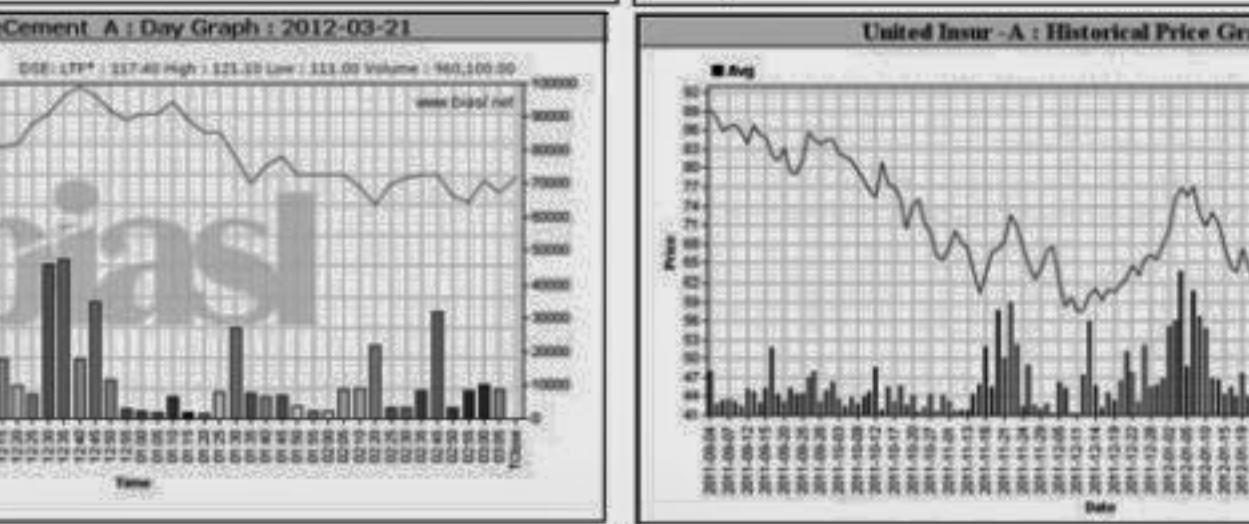
Capital Gainers

Company	Price Chn. (%)		Price Scale				Turnover				BookV				
	Close	Avg.	Avg.	Close	DayHi	DayLo	Yr Hi	YrLo	M.Tk	Per S	EPS	PE	Per S	EPS	PE
ConfidenceCement A	6.89	7.34	117.80	117.90	121.10	111.00	279.3	77.1	113.119	80.12	7.39	15.94			
MBL 1st M. F.-A	6.17	6.51	8.67	8.60	8.80	8.50	10.4	7.1	0.013	0	0	-			
Northern Jute -Z	5.51	5.51	28.70	28.70	28.70	28.70	50.4	17.0	0.006	8.6	-8.19	-3.50			
MeghnaCement -A	5.10	5.42	135.69	136.00	142.00	127.30	292.0	93.3	33.745	27.34	2.23	60.85			
IDLC Finance -A	4.65	6.22	90.05	90.10	93.90	85.00	265.0	71.5	17.263	32.17	4.04	22.29			
Shampur Sugar -Z	3.74	(1.33)	11.10	11.10	11.10	11.10	21.8	10.1	0.006	-638.4	-31.34	-0.35			
Meghna PET Ind. -Z	2.91	3.49	10.69	10.60	10.80	10.20	25.0	9.0	0.171	-0.43	-0.63	-16.97			
LankaBangla Fin. -A	2.89	3.80	71.60	71.20	74.00	69.10	258.8	59.1	45.863	34.55	4.18	17.13			
Brac B.C. Bond-A	2.83	6.67	1,066.57	1,036.50	1,050.00	1,030.00	1130.0	941.0	0.016	0	0	-			
Singer BD -A	2.43	2.56	193.88	193.60	198.00	188.00	727.0	168.9	37.195	52.99	10.18	19.05			



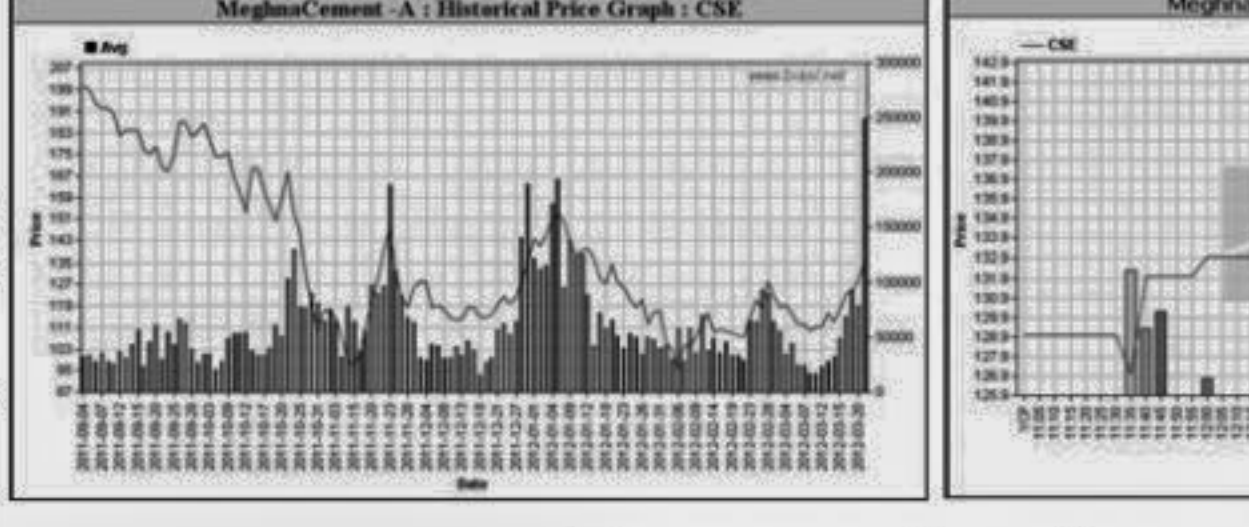
Capital Losers

Company	Price Chn. (%)		Price Scale				Turnover				BookV				
	Close	Avg.	Avg.	Close	DayHi	DayLo	Yr Hi	YrLo	M.Tk	Per S	EPS	PE	Per S	EPS	PE
United Insur -A	-8.21	-7.23	57.49	57.00	60.00	56.60	151.5	44.2	3.524	21.18	2.89	19.89			
Safko Spinning-A	-5.36	-2.17	32.98	31.80	34.50	31.30	71.0	24.8	13.723	4.32	-0.52	-63.42			
Sonargaon Tex -A	-5.05	-3.50	30.63	30.10	31.70	29.80	104.0	21.8	4.750	65.02	1.29	23.74			
Reckitt Benckiser -A	-4.93	-4.99	648.00	648.00	648.00	648.00	1347.0	595.0	0.065	43.13	26.71	24.26			
BSRM Steels-A	-4.52	-4.52	109.30	107.80	112.50	105.00	186.8	83.6	72.531	6.56	4.82	22.68			
Rahima Food -A	-4.36	-3.52	29.02	28.50	29.90	28.20	64.5	21.5	4.527	4.78	0.82	35.39			
Beach Hatchery -A	-4.23	-2.19	37.11	36.20	40.60	35.30	85.0	27.2	15.192	13.68	2.54	14.61			
Marico BD Ltd-A	-4.11	-3.14	361.60	361.30	375.00	357.00	665.0	318.2	0.452	76.18	11.34	31.89			
Rangpur Dairy-N	-4.10	-2.33	38.13	37.40	39.00	37.10	44.4	28.5	21.734	11.77	1.04	36.66			
Shinepukur Ceramics-A	-4.04	-2.00	41.11	40.40	42.00	40.00	96.5	25.5	28.540	24.58	2.28	18.03			



Chittagong Stock Exchange

Company	Price Chn. (%)		Price Scale				Turnover				BookV				
	Close	Avg.	Avg.	Close	DayHi	DayLo	Yr Hi	YrLo	M.Tk	Per S	EPS	PE	Per S	EPS	PE
MeghnaCement -A	7.29	4.78	134.70	138.40	141.90	127.00	292.9	92.0	1.468	27.34	2.23	60.40			
ConfidenceCement A	6.06	7.88	118.13	117.20	121.30	111.30	279.9	75.7	8.549	80.12	7.39	15.99			
HeidelbergCement -A	5.78	5.76	190.36	190.40	197.50	190.00	253.4	253.4	0.800	79.9	17.68	10.77			
IDLC Finance -A	5.37	6.25	90.47	90.20	93.30	88.00	264.4	71.0	1.417	32.17	4.04	22.39			
Berger Paints-A	4.78	6.10	570.28	563.20	577.80	563.10	815.0	500.0	0.114	85.74	31.1	18.34			
AramitCementA	3.98	4.84	101.75	101.80	102.20	101.30	95.0	95.0	0.102	9.49	5.15	19.76			
Islami Ins BD-A	3.45	2.66	42.03	42.00	42.30	42.00	40.0	40.0	0.105	12.29	1.83	22.97			
Phoenix Fin. 1st MF-A	3.33	2.67	6.15	6.20	6.20	6.10	14.7	5.2	0.006	11.33	1.33	4.62			
LankaBangla Fin. -A	2.60	4.16	71.89	71.00	74.00	70.00	260.0	60.1	4.853	34.55	4.18	17.20			
Singer BD -A	2.49	3.11	194.95	193.20	198.00	188.30	236.0	236.0	2.866	52.99	10.18	19.15			



Chittagong Stock Exchange

Company	Price Chn. (%)		Price Scale				Turnover				BookV				
	Close	Avg.	Avg.	Close	DayHi	DayLo	Yr Hi	YrLo	M.Tk	Per S	EPS	PE	Per S	EPS	PE
Nitol Insurance -A	-9.86	-9.87	43.90	43.90	43.90	43.90	50.0	50.0	0.002	13.98	1.85	23.73			
Apex Foods -A	-9.73	-9.84	66.72	66.80	66.90	66.60	73.1	73.1	0.133	69.7	1.89	35.30			
Samata Leather-Z	-8.55	-8.68	13.88	13.90	14.00	13.70	16.7	16.7	0.035	12.04	-0.13	-106.77			
Reliance Insur -A	-8.89	-5.67	96.03	96.00	96.20	96.00	112								