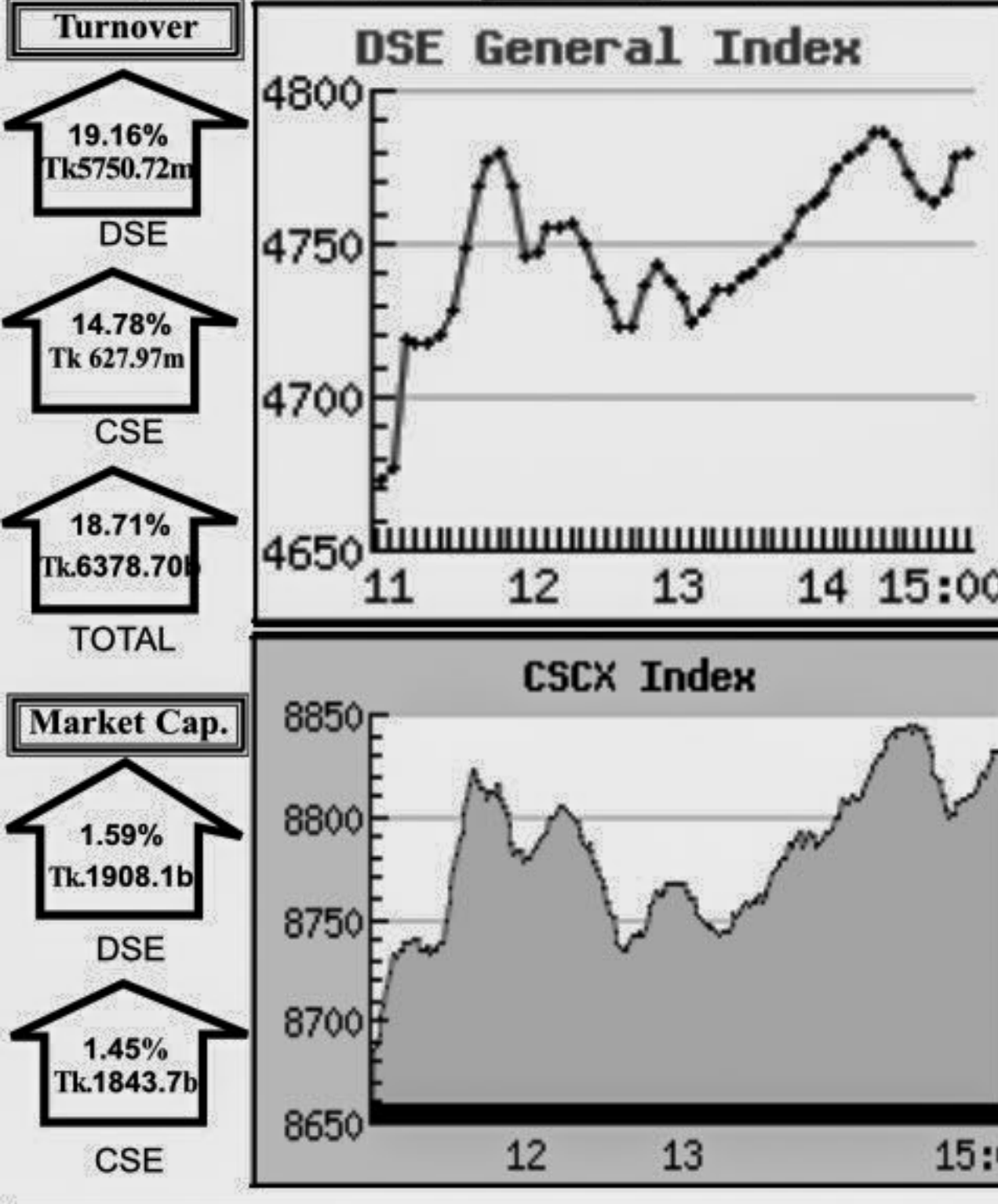


Capital Market Highlights: March 20, 2012

INDEX			
	All Share	DSE General	DSE 20
DSE	3990.28829 (+) 1.97%	4769.50691 (+) 2.08%	3691.21210 (+) 2.21%
CSE			
	All Share	CSE CSCX	CSE 30
CSE	13750.1405 (+) 1.46%	8811.1792 (+) 1.53%	12526.4868 (+) 2.48%



Key Features - March 20, 2012

Indicators	DSE	CSE	TOTAL
Turnover (Million Taka)	5,750.72	627.97	6,378.69
Turnover (Volume)	125,067,958	15,346,321	140,414,279
No. of Contract	155,550	23,856	179,406
Traded Issues	259	194	259
Issue Gain (Avg. Price Basis)	241	180	241
Issue Loss (Avg. Price Basis)	17	14	17
Unchanged Issue (Avg. Price Basis)	1	1	1
Market Cap. Equity (Billion. Tk.)	1,908.08	1,843.68	1,908.08
Market Cap. Equity (Billion US\$)	24.62	23.79	24.62

Combined Turnover Leaders

Company	Volume (Share)	Value (M. Taka)	% of Total	Average Price
BEXIMCO Ltd. -A	2761132	309.06	4.85	111.93
UNITED AIR-A	13285227	284.17	4.46	21.39
Grameenphone-A	1088219	189.76	2.97	174.37
Summit Power -A	2144708	174.09	2.73	81.17
Jamuna Oil -A	802044	160.42	2.51	200.01
People's Leasing-A	2217097	133.88	2.10	60.39
Keya Cosmetics -A	1979200	125.48	1.97	63.4
Aftab Auto.-A	1032411	125.05	1.96	121.12
M.I. Cement-A	1141871	111.47	1.75	97.62
Titas Gas TDCLA	1545500	109.56	1.72	70.89
National Bank - A	2780850	105.51	1.65	37.94
R. N. Spinning-A	2929375	102.00	1.60	34.82
Golden Son -A	1545109	95.63	1.50	61.89
Fu-wang Ceramic-A	2377550	93.29	1.46	39.24
Beximco Pharma -A	1062440	91.44	1.43	86.06
BSRM Steels-A	795940	91.39	1.43	114.82
Square Pharma -A	404540	89.72	1.41	221.78
Social Islami. B-A	3839945	86.87	1.36	22.62
UCBL - A	2282147	81.77	1.28	35.83
Islami Bank BD - A	1464550	81.13	1.27	55.39
LafargeS Cement-Z	2795500	77.85	1.22	27.85
MJL BD Ltd.-A	764925	75.24	1.18	98.36
Deshbandhu Polymer-A	1968875	72.78	1.14	36.97
Barakatullah E. D.-A	1572400	69.89	1.10	44.45
Southeast Bank-A	3003520	69.44	1.09	23.12
Beacon Pharma Ltd.-B	2714075	69.03	1.08	25.43
One Bank - A	2070550	66.87	1.05	32.3
Beximco Syn.-A	1664180	66.24	1.04	39.8
Zahintex Ind.-N	1522000	65.86	1.03	43.27
Fu-Wang Food A	1535340	65.46	1.03	42.64

Sectoral Turnover Summary

Sector	DSE	CSE	Total
	Mill. (Tk) %	Mill. Tk. %	Mill. Tk. %
Bank	1097.23 19.08	151.81 24.18	1249.04 19.58
NBFI	528.70 9.19	55.08 8.77	583.78 9.15
Investment	91.88 1.60	6.57 1.05	98.45 1.54
Engineering	553.25 9.62	63.96 10.18	617.21 9.68
Food & Allied	169.70 2.95	12.81 2.04	182.51 2.86
Fuel & Power	695.06 12.09	48.48 7.72	743.55 11.66
Jute	3.44 0.06		3.44 0.05
Textile	468.52 8.15	46.42 7.39	514.94 8.07
Pharma & Chemical	432.52 7.52	48.58 7.74	481.09 7.54
Paper & Packaging	0.62 0.01	0.05 0.01	0.67 0.01
Service	66.38 1.15	7.58 1.21	73.96 1.16
Leather	32.31 0.56	1.59 0.25	33.90 0.53
Ceramic	169.60 2.95	16.11 2.57	185.71 2.91
Cement	185.28 3.22	26.26 4.18	211.54 3.32
Information Technology	56.92 0.99	5.57 0.89	62.50 0.98
General Insurance	357.88 6.22	20.30 3.23	378.18 5.93
Life Insurance	93.68 1.63	1.61 0.26	95.29 1.49
Telecom	176.54 3.07	13.22 2.10	189.76 2.97
Travel & Leisure	236.29 4.11	47.88 7.63	284.17 4.46
Miscellaneous	328.40 5.71	54.08 8.61	382.49 6.00
Debtenture	6.53 0.11	0.01 0.00	6.55 0.10

Sectoral P/E & EPS

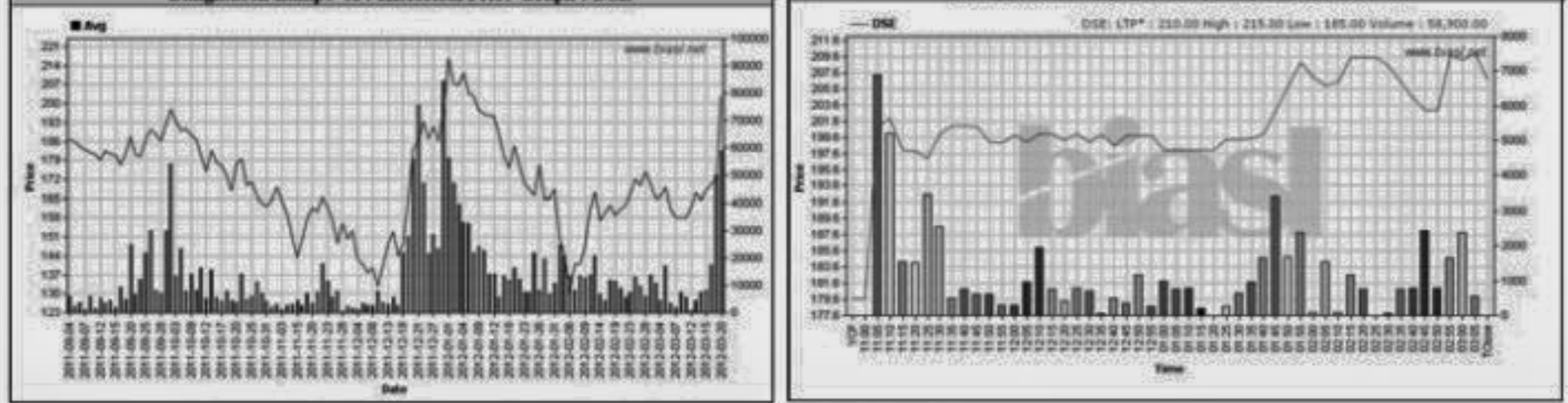
Sector	P/E		EPS(%)	
	DSE	CSE	DSE	CSE
Bank	9.55	9.53	37.13	37.13
NBFI	16.29	15.90	44.35	45.58
Investment	6.21	6.32	16.80	16.80
Engineering	20.88	21.43	44.72	42.66
Food & Allied	16.31	16.19	114.52	116.23
Fuel & Power	13.48	13.45	66.87	66.88
Textile	11.66	11.23	23.18	23.07
Pharma & Chemical	22.27	21.29	65.51	57.11
Paper & Printing	23.49	24.55	12.41	13.27
Service	24.54	24.22	23.83	23.83
Leather	13.11	13.12	104.33	129.27
Ceramic	25.66	25.58	23.12	23.12
Cement	17.36	16.94	67.36	67.36
IT	19.98	19.94	12.37	12.37
General Insurance	18.07	17.93	32.84	33.42
Life Insurance	19.20	19.45	95.84	95.84
Telecom	12.47	12.43	139.90	139.90
Travel & Leisure	20.57	30.08	9.85	7.10
Miscellaneous	6.95	6.96	135.85	131.94
Stock Exchanges	12.53	12.34	45.69	45.50

All the above PE and EPS are estimated to get a relative idea only and not calculated by any of the stock exchanges.

Prepared exclusively for Daily Star by Business Information Automation Service Line (BIASL) on the basis of information collected from daily stock quotations and audited reports of the listed companies. High level of caution has been taken to collect and present the above information and data. The publisher will not take any responsibility if any body uses this information and data for his/her investment decision. For any query please email to biasl@bol-online.com or call 01552153562 or go to www.biasl.net

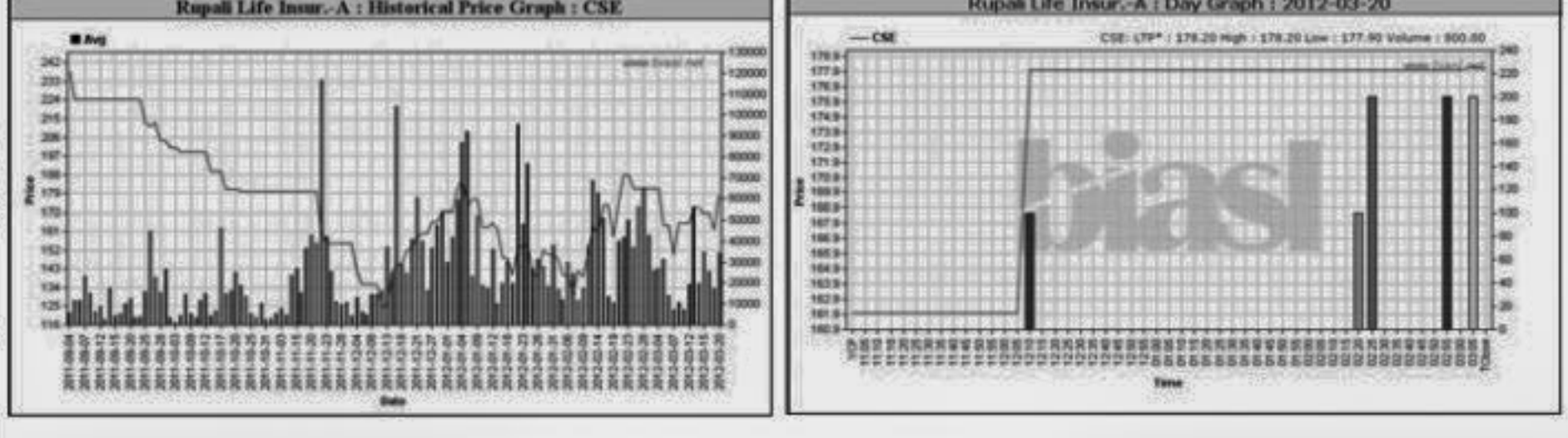
Capital Gainers

Dhaka Stock Exchange													
Company	Price Chn. (%)		Price Scale				Turnover		BookV		PE		
	Close	Avg.	Avg.	Close	DayHi	DayLo	Yr Hi	YrLo	M.Tk	Per S	EPS	PE	
Bangladesh Lamps -A	15.03	17.94	202.60	206.70	215.00	185.00	265.7	128.4	11.933	114.29	6.54	30.98	
Modern Dyeing -Z	10.00	10.00	41.80	41.80	41.80	41.80	60.0	32.0	0.019	9.35	-0.64	-65.31	
Union Capital -A	7.50	6.96	42.58	43.00	43.40	40.00	238.0	35.1	18.494	12.41	1.7	25.05	
Republic Insu.-A	6.86	5.52	51.08	51.40	52.00	45.10	82.5	37.0	11.046	12.08	1.54	33.17	
Deshbandhu Polymer-A	6.61	7.85	36.94	37.10	38.00	31.90	96.0	23.4	62.506	12.91	1.32	27.98	
Miracle Industries -B	6.19	4.06	20.26	20.60	20.80	17.50	43.9	15.4	5.721	15.5	0.21	96.48	
One Bank -A	6.17	5.59	32.29	32.70	33.20	28.00	61.9	26.0	60.538	14.88	3.07	10.52	
Islamic Finance-A	6.02	4.90	31.07	31.70	32.00	28.60	72.7	23.7	16.372	13.87	0.4	77.68	
Mithun Knitting -A	5.94	4.52	98.34	99.80	100.80	85.00	209.6	66.0	11.407	17.45	3.93	25.02	
Prime Finance-A	5.92	6.12	64.13	64.40	65.00	61.00	237.0	55.5	21.384	20.6	2.96	21.67	



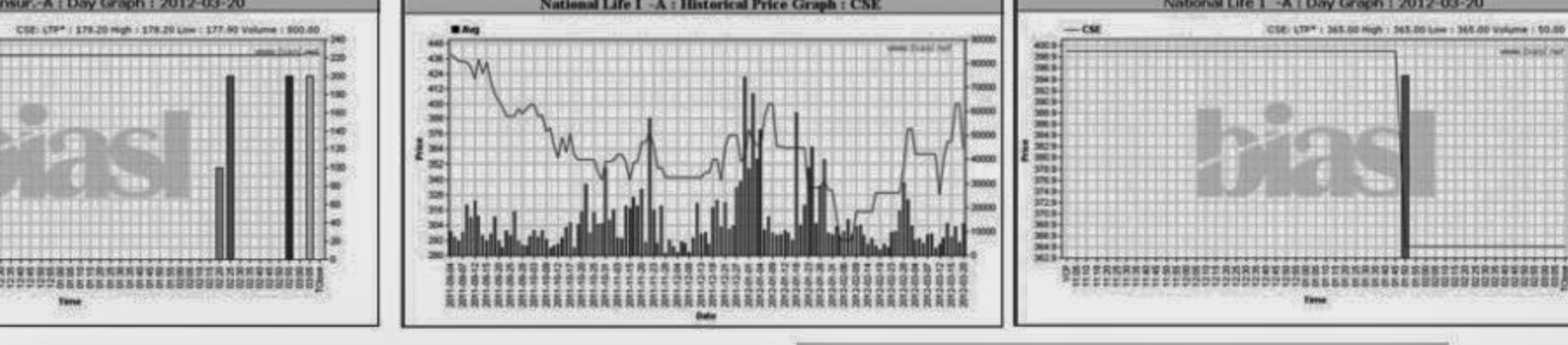
Chittagong Stock Exchange

Company	Price Chn. (%)		Price Scale				Turnover		BookV		PE	
	Close	Avg.	Avg.	Close	DayHi	DayLo	Yr Hi	YrLo	M.Tk	Per S	EPS	PE
Rupali Life Insur.-A	9.94	9.90	178.04	178.10	178.20	177.90	152.0	152.0	0.142	31.25	3.75	47.48
Apex Foods -A	8.82	10.78	74.00	74.00	74.00	74.00	73.1	73.1	0.030	69.7	1.89	39.15
Prime Insur -A	8.49	5.49	50.50	52.40	52.40	48.60	118.7	40.0	0.025	13.79	1.73	29.19
Islamic Finance-A	8.42	6.62	31.23	32.20	32.70	29.00	72.0	23.1	2.591	13.87	0.4	78.08
Deshbandhu Polymer-A	8.12	8.70	37.12	37.30	37.80	35.00	96.2	23.2	10.276	12.91	1.32	28.12
Imam Button -Z	8.00	5.01	15.71	16.20	16.20	14.90	18.7	18.7	0.043	7.35	-1.74	-9.03
One Bank -A	7.87	6.44	32.39	32.90	33.40	31.30	62.5	27.4	6.336	14.88	3.07	10.55
Union Capital -A	7.54	6.34	42.28	42.80	43.00	40.90	238.0	36.1	2.981	12.41	1.7	24.87
Berger Paints-A	7.50	7.50	537.50	537.50	537.50	537.50	815.0	500.0	0.027	85.74	3.11	17.28
Prime Finance-A	7.44	6.21	63.83	65.00	65.90	62.00	236.0	55.0	1.783	20.6	2.96	21.56



Chittagong Stock Exchange

Company	Price Chn. (%)		Price Scale				Turnover		BookV		PE	
	Close	Avg.	Avg.	Close	DayHi	DayLo	Yr Hi	YrLo	M.Tk	Per S	EPS	PE
BD Fixed Income MF-A	-12.09	-18.65	8.33	8.00	9.00	8.00	11.0	8.0	0.013	10.27	0	-
National Life I -A	-8.75	-8.75	365.00	365.00	365.00	365.00	342.1	342.1	0.018	80.99	12.34	29.58
AIBL 1st Is. M. F.-A	-2.86	-3.41	6.80	6.80	6.80	6.80	31.0	6.3	0.007	0	0	-
Standard Ceramic-B	-2.44	-2.01	36.16	36.00	36.50	36.00	68.2	24.1	0.163	14.9	0.62	58.32
Key & Que (BD) -B	-1.70	-0.53	58.13	57.70	59.00	57.00	42.3	42.3	1.790	10.52	0.45	129.18
AMCL 2nd MF-A	-1.32	-1.84	7.46	7.50	7.60	7.20	15.5	7.0	0.019	12.12	1.81	4.12
The Ibn Sina-A	-1.31	-1.44	128.13	128.30	128.50	128.00	127.5	127.5	0.051	19.9	4.64	27.61
National Housing Fin.-A	-1.08	-2.67	91.58	91.20	94.00	91.00	140.0	0.5	0.211	15.28	2.03	45.11
ACI Limited-A	-0.98	-0.63	201.32	202.00	202.00	200.30	342.0	80.0	0.050	217.76	30.49	6.60
H.R. Textile -A	-0.88	-0.77	33.67	33.60	33.80	33.50	35.9	35.9	0.084	12.9	2.27	14.83



Turnover Leaders

Dhaka Stock Exchange													
Company	Vol. Share	Value (M. Tk.)	% of Total	Big Lot	Price Scale			C. Pct	BookV	Per S	EPS	PE	
					Avg. Close	DayHi	DayLo						
BEXIMCO Ltd. -A	2332440	260.983	4.54	-	111.89	111.20	120.00	100.10	0.00	49.26	19.28	5.80	
UNITED AIR-A	11041835	236.289	4.11	-	21.40	21.40	22.00	20.00	3.88	12.64	0.71	30.14	