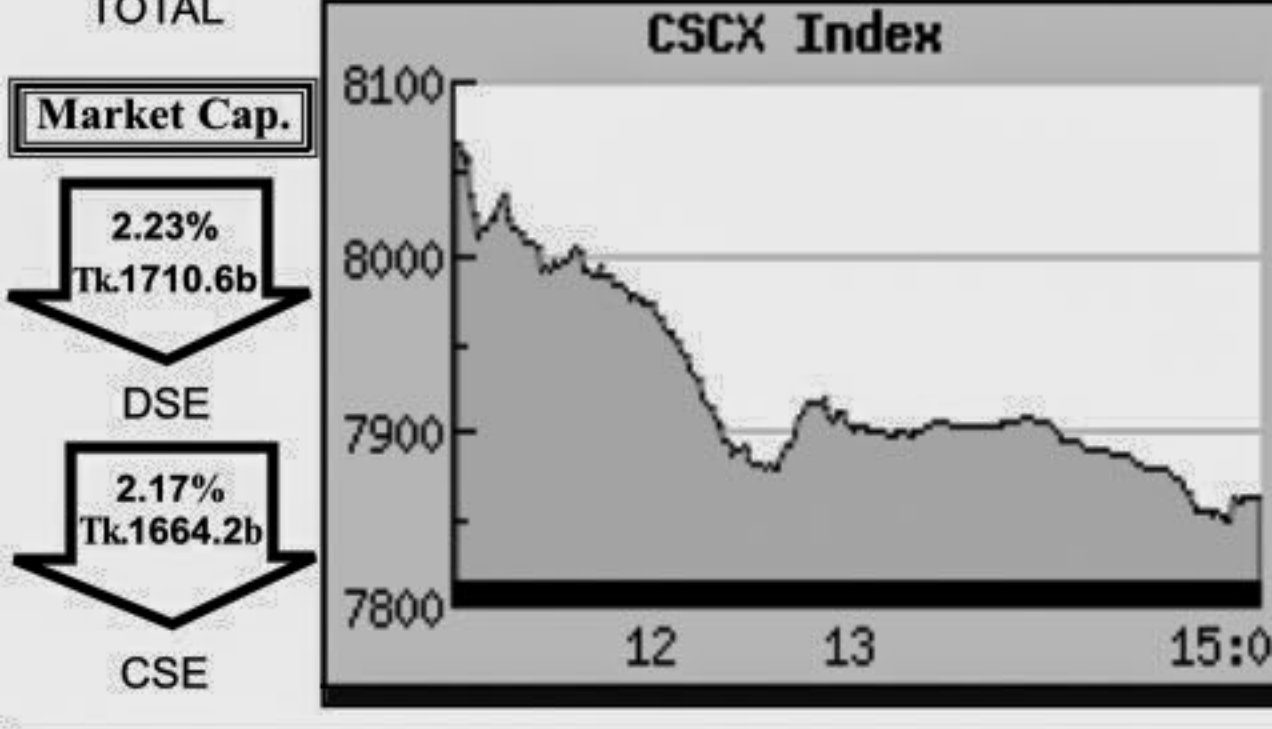
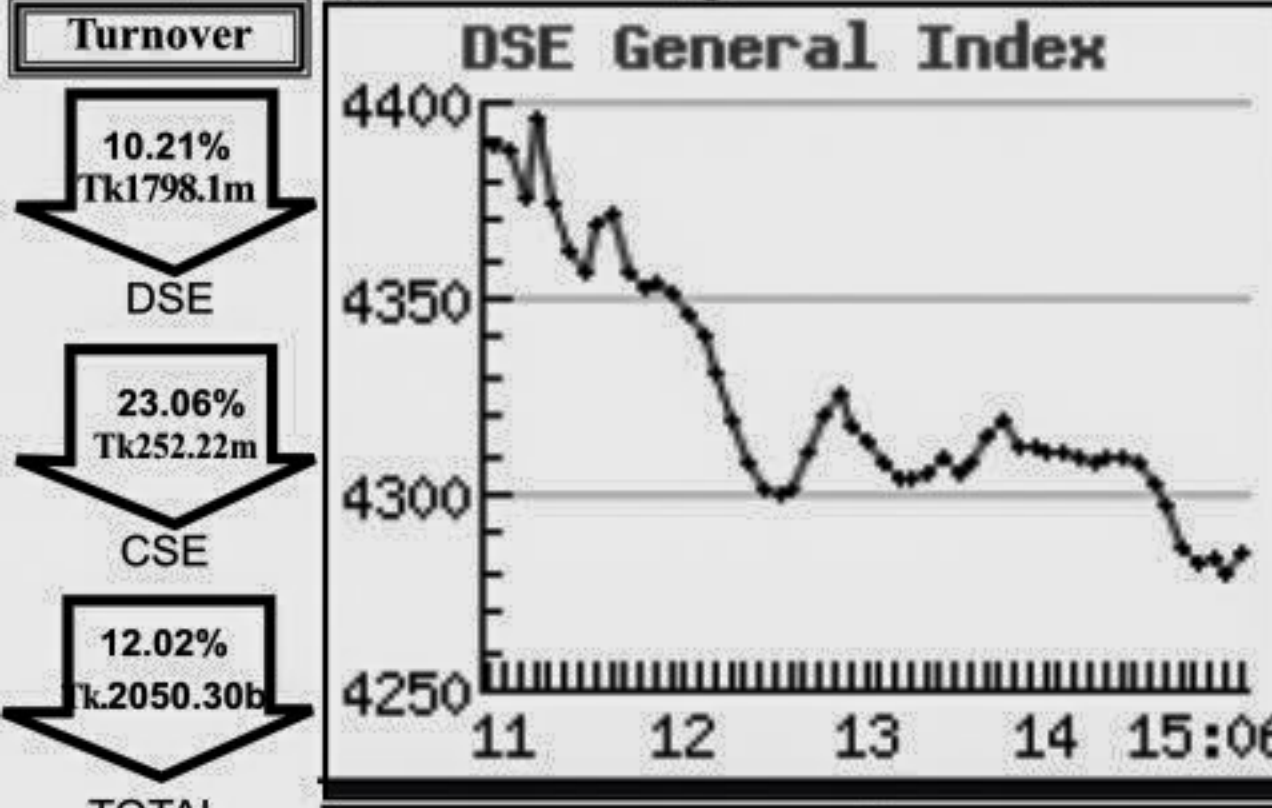


Capital Market Highlights: March 07, 2012

INDEX table showing All Share, DSE General, DSE 20, All Share, CSE CSCX, CSE 30 with percentage changes.

Turnover table showing DSE (10.21%), CSE (23.06%), and TOTAL (12.02%) turnover in Million Taka.



Key Features - March 07, 2012

Indicators table for DSE, CSE, and TOTAL, including Turnover, Market Cap., and other metrics.

Combined Turnover Leaders

Table listing top combined turnover leaders with columns for Company, Volume, Value, % of Total, and Average Price.

Sectoral Turnover Summary

Table summarizing turnover by sector, including Bank, Investment, Engineering, and others.

Sectoral P/E & EPS

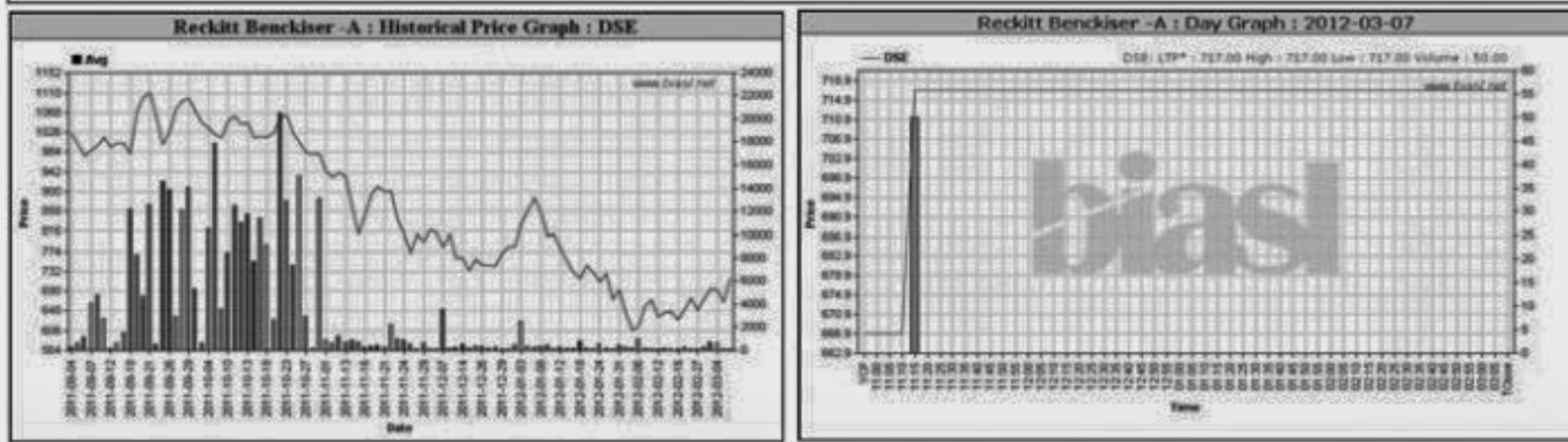
Table showing P/E and EPS ratios for various sectors like Bank, Investment, Engineering, etc.

Prepared exclusively for Daily Star by Business Information Automation Service Line (BIASL)...

Capital Gainers

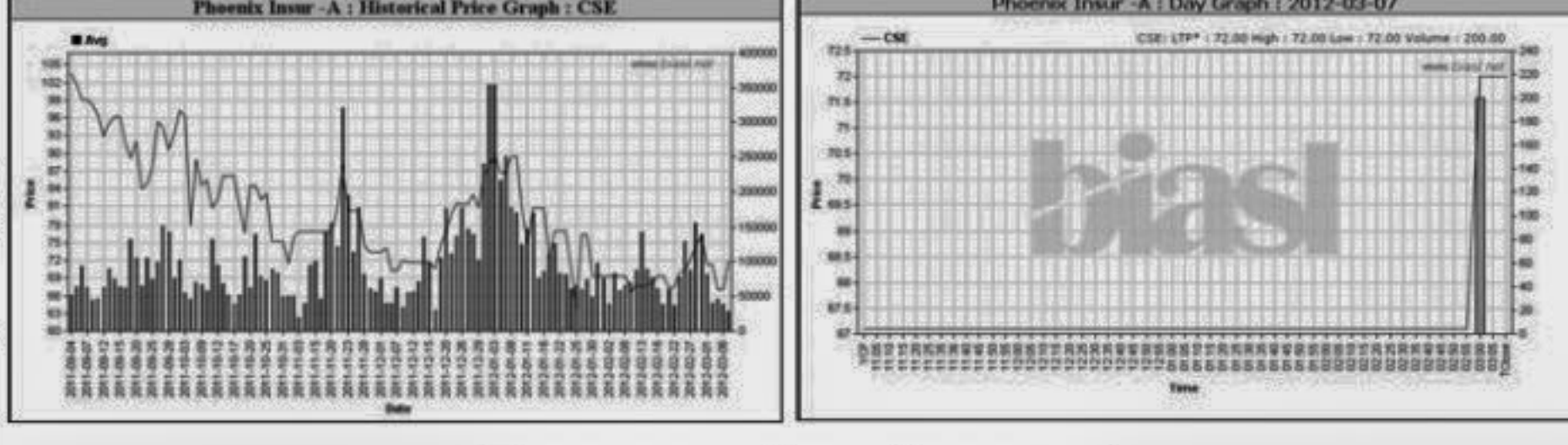
Dhaka Stock Exchange

Table of top capital gainers from Dhaka Stock Exchange with columns for Company, Price Chn. (%), Price Scale, Turnover, and BookV.



Chittagong Stock Exchange

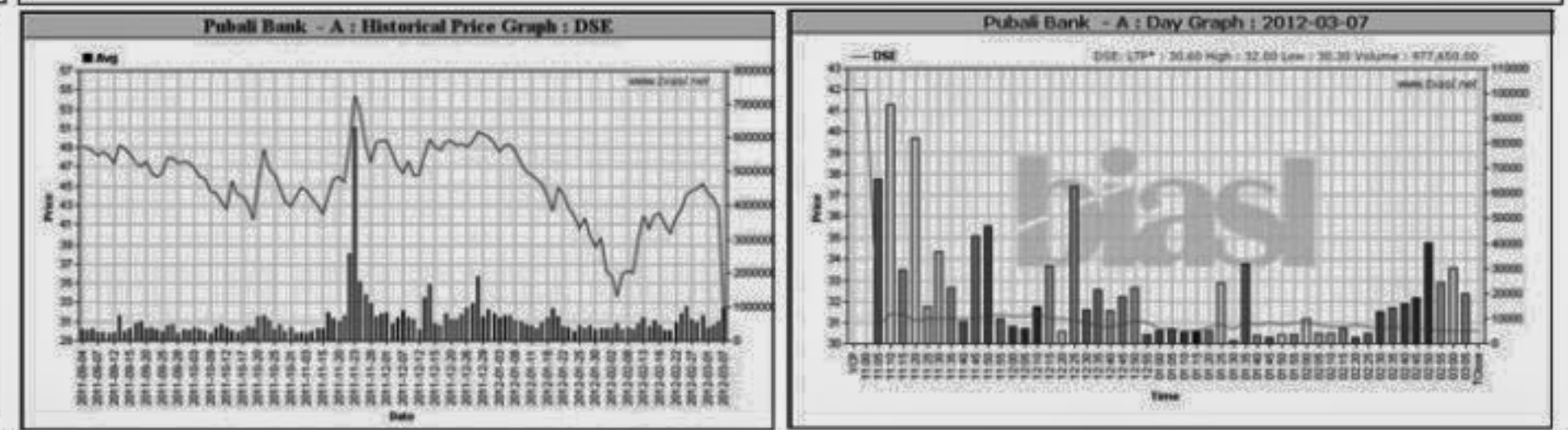
Table of top capital gainers from Chittagong Stock Exchange.



Capital Losers

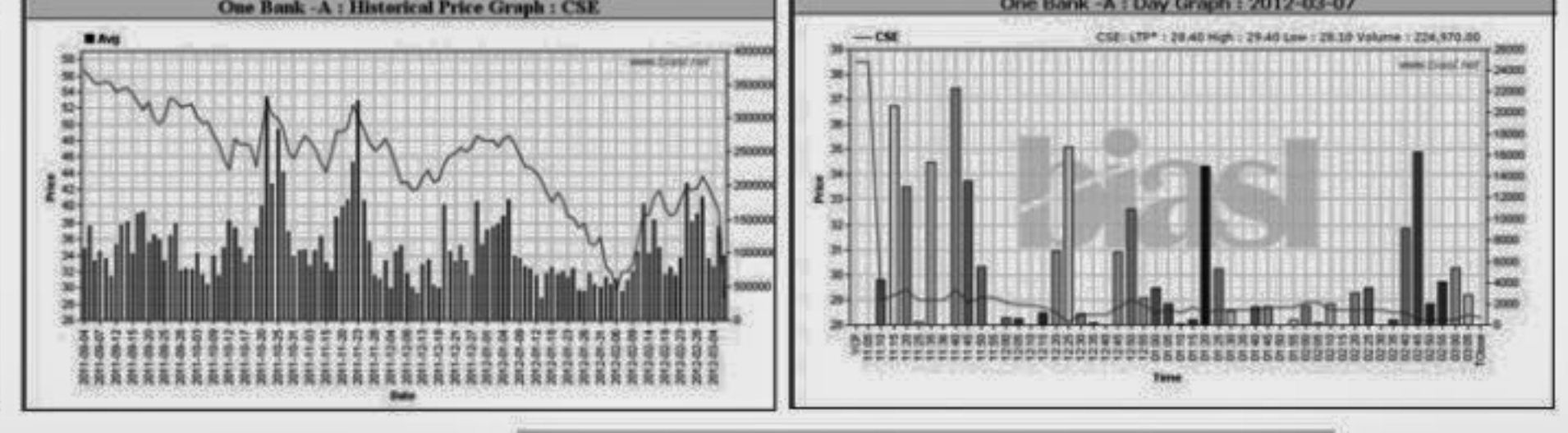
Dhaka Stock Exchange

Table of top capital losers from Dhaka Stock Exchange.



Chittagong Stock Exchange

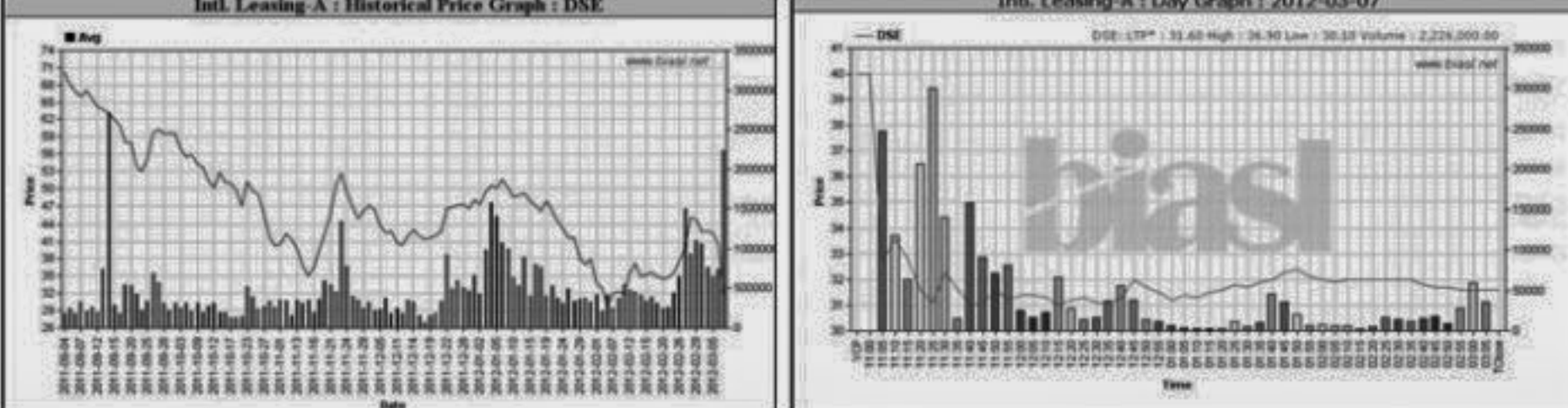
Table of top capital losers from Chittagong Stock Exchange.



Turnover Leaders

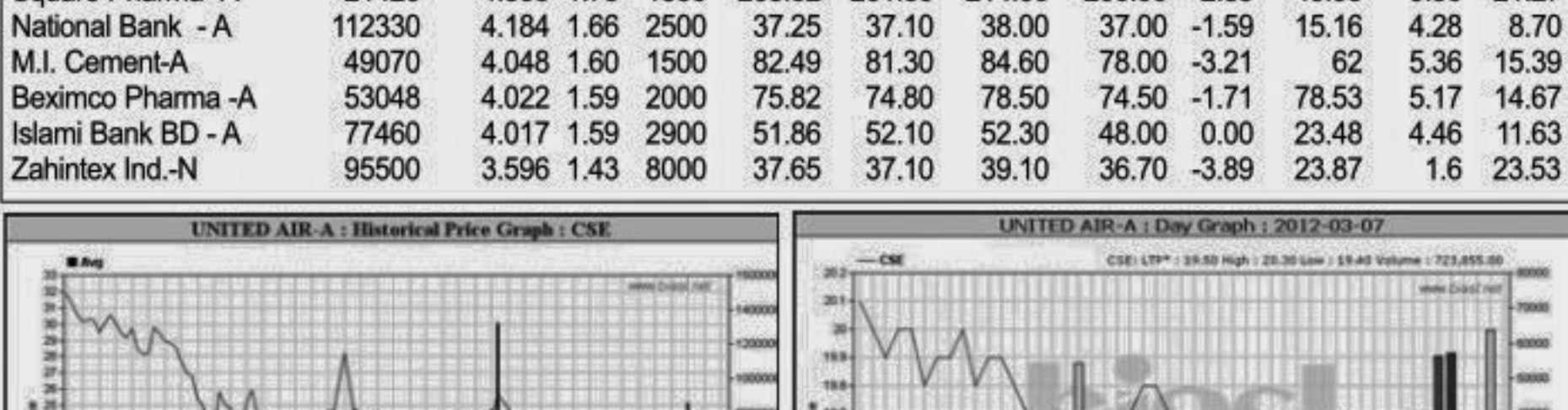
Dhaka Stock Exchange

Table of top turnover leaders from Dhaka Stock Exchange.



Chittagong Stock Exchange

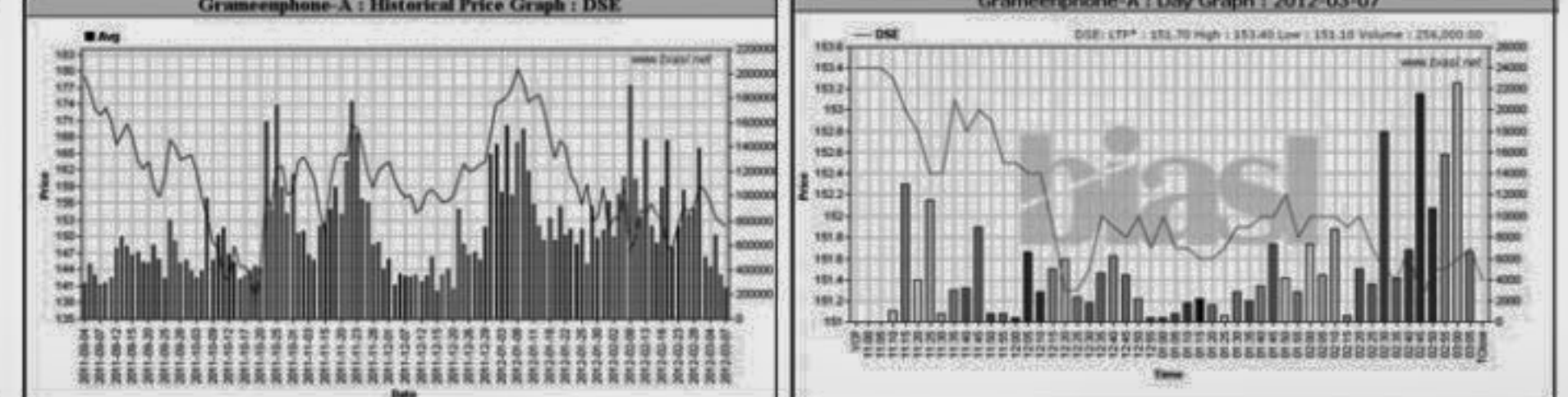
Table of top turnover leaders from Chittagong Stock Exchange.



Market Cap. Leader

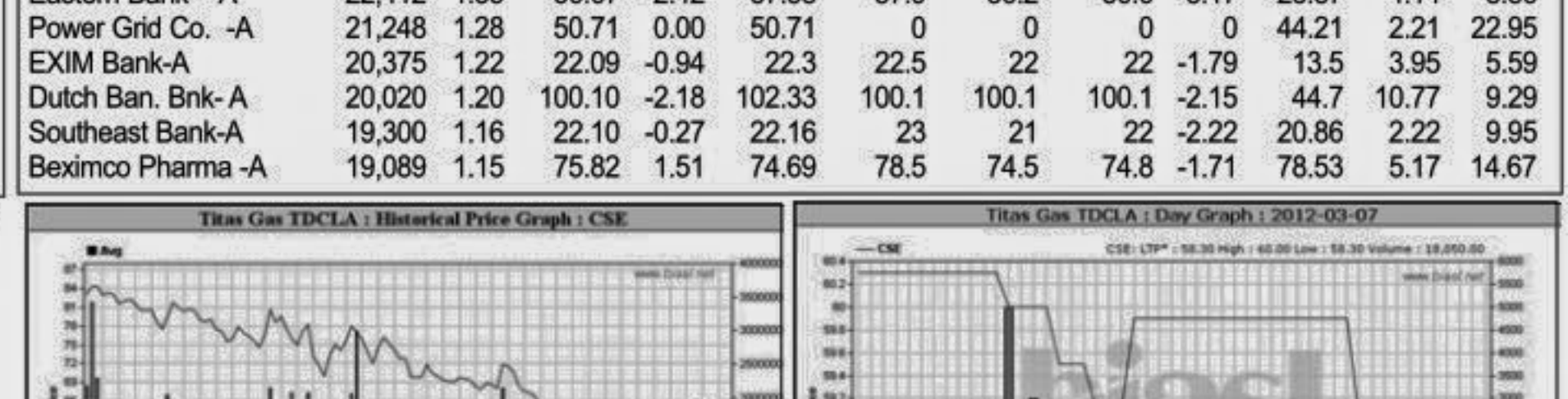
Dhaka Stock Exchange

Table of top market cap. leaders from Dhaka Stock Exchange.



Chittagong Stock Exchange

Table of top market cap. leaders from Chittagong Stock Exchange.



When to buy or sell

Investors follow many calculations of corporate performance when deciding if a stock is undervalued or overvalued. These range from the simple price-earnings ratio, or P/E, to far more technical ways of attempting to discern whether a stock is trending up or down. Here are some of the most common.



Notes: Capital Gainer / Loser tables are prepared on the basis of the close price change of the traded issues. "Close" or "C.Price" or "D Clo." is the Closing Price of the day.