

Capital Market Highlights: February 26, 2012

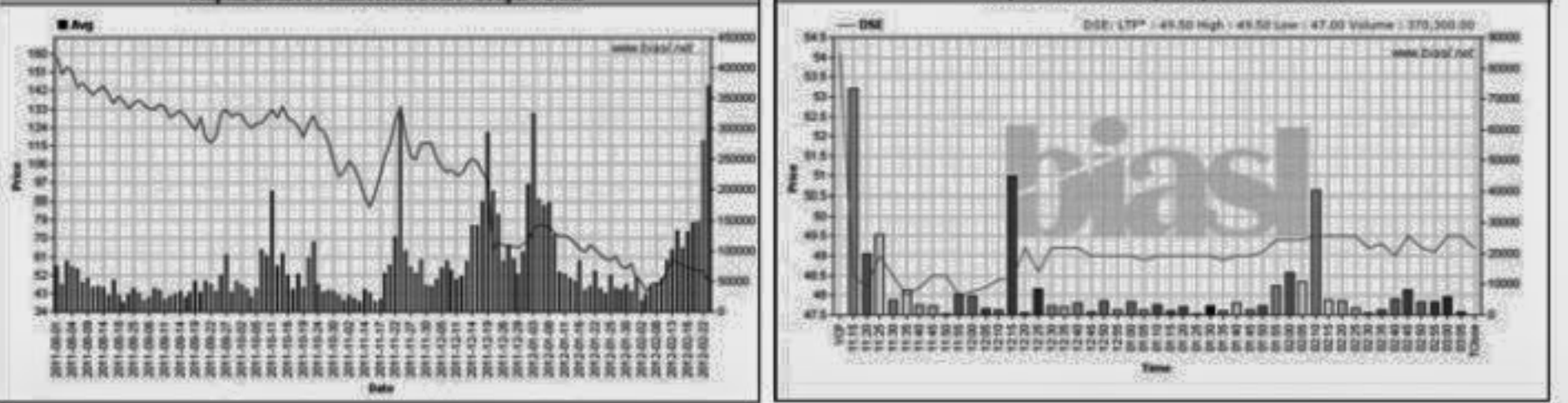
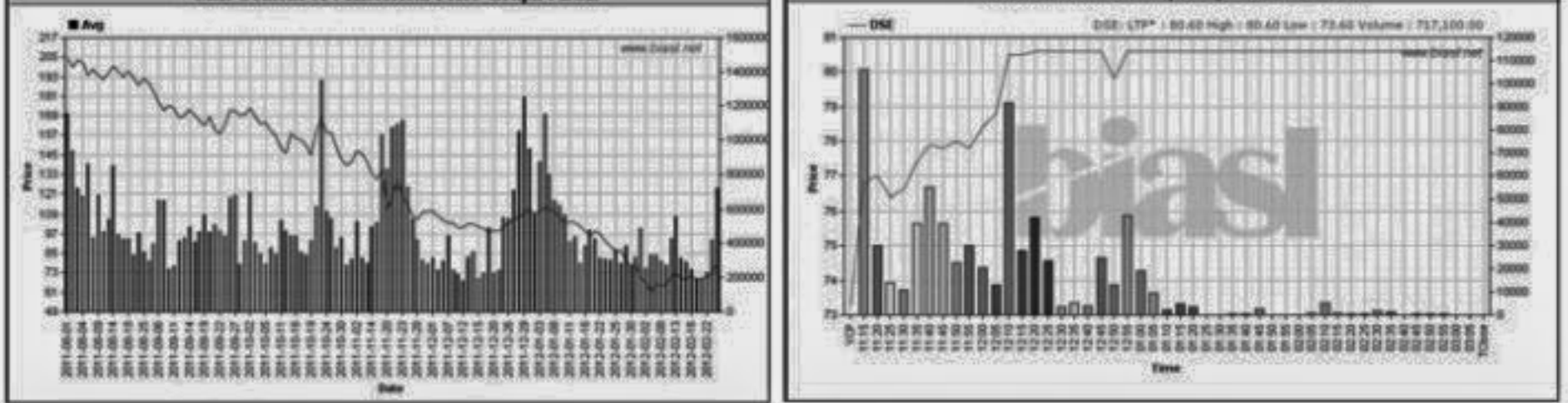
INDEX
All Share DSE General DSE 20
DSE 3807.54520 (+) 3.95%
All Share CSE CSCX CSE 30
CSE 13055.6992 (+) 3.63%

Capital Gainers

Dhaka Stock Exchange
Company Price Chn. (%) Price Scale Turnover BookV
M.I. Cement-A 9.96 8.42 78.58 80.60...

Capital Losers

Dhaka Stock Exchange
Company Price Chn. (%) Price Scale Turnover BookV
Rupali InsurA -9.06 -9.77 48.85 49.20...

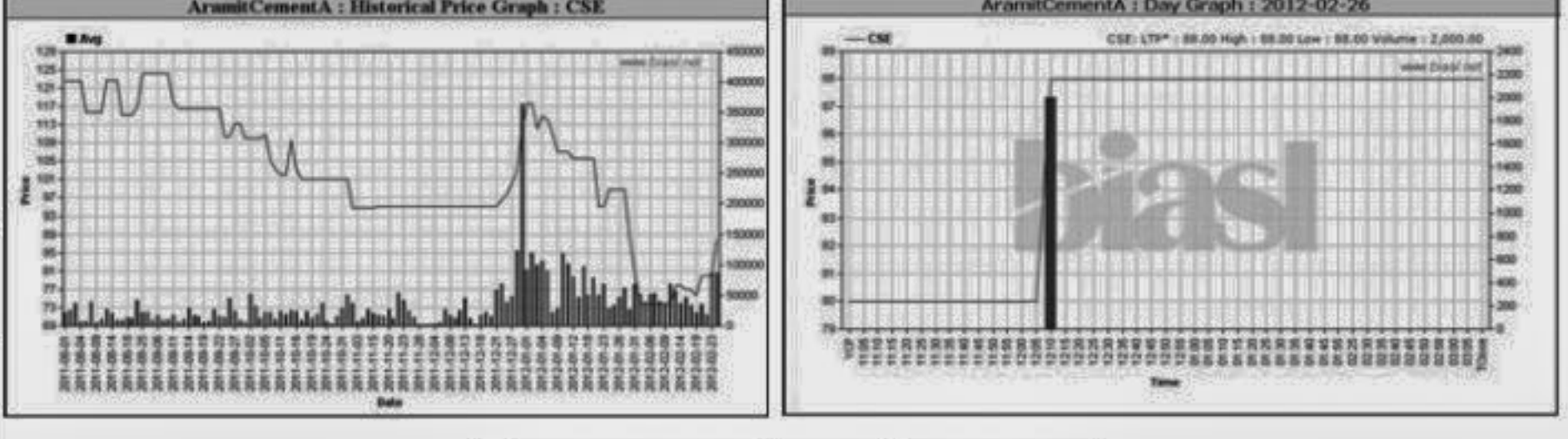


Chittagong Stock Exchange

Company Price Chn. (%) Price Scale Turnover BookV
AramitCementA 10.00 10.00 88.00 88.00...

Chittagong Stock Exchange

Company Price Chn. (%) Price Scale Turnover BookV
Aramit -A -17.65 -17.65 210.00 210.00...



Key Features - February 26, 2012

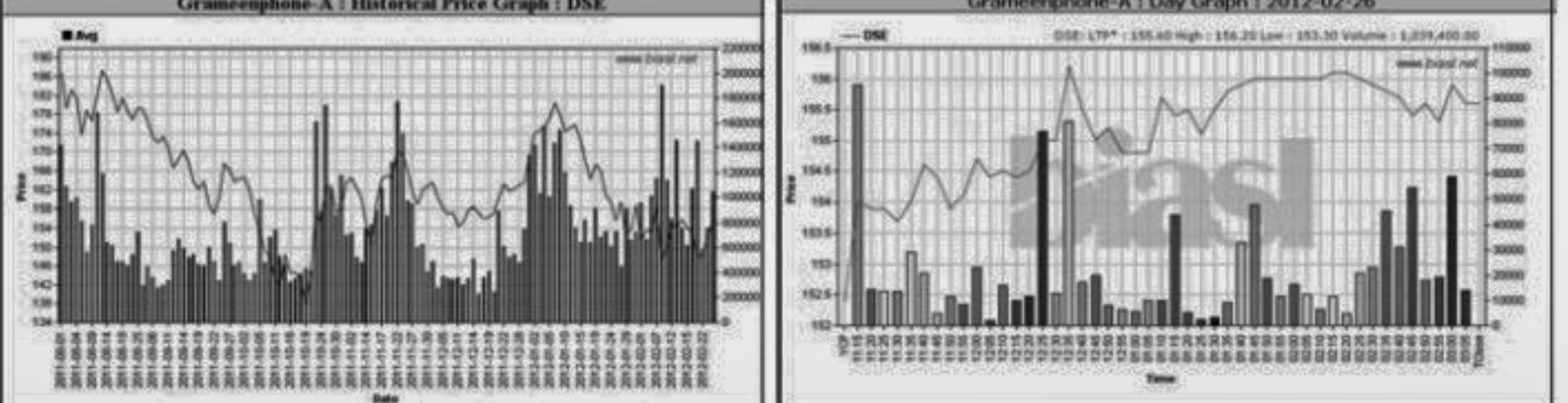
Indicators DSE CSE TOTAL
Turnover (Million Taka) 4,631.55 572.76 5,204.31
Turnover (Volume) 107,589,665 14,580,492 122,170,157

Turnover Leaders

Dhaka Stock Exchange
Company Vol. Value % of Big Price Scale C.Pite BookV
BEXIMCO Ltd.-A 2810341 277.992 6.00 - 98.92...

Market Cap. Leader

Dhaka Stock Exchange
Company Market Cap. % of Average Price Scale BookV
Grameenphone-A 209,621 11.62 155.24 2.15 151.97...

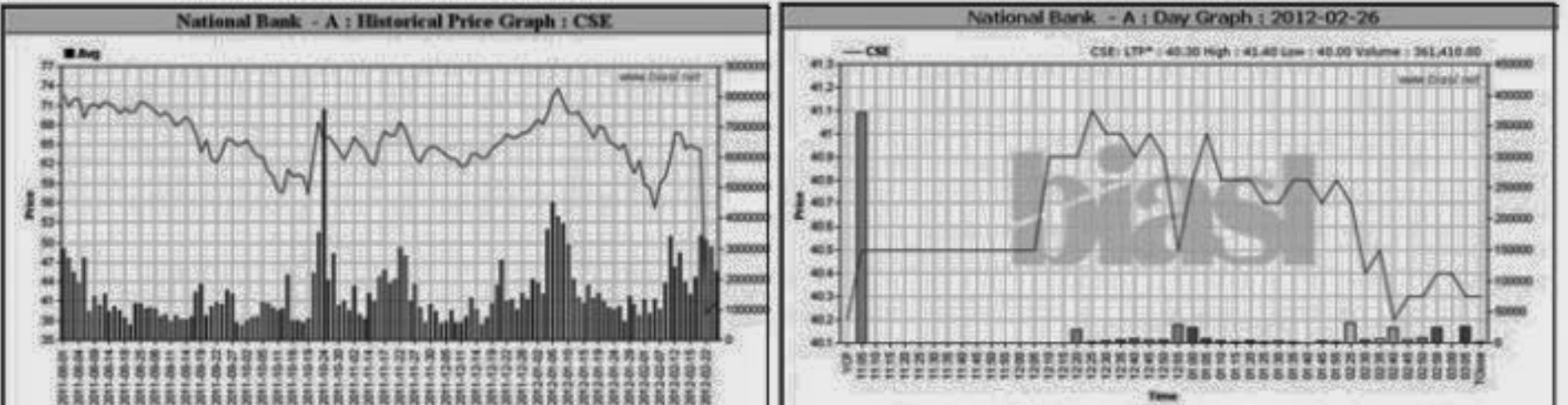
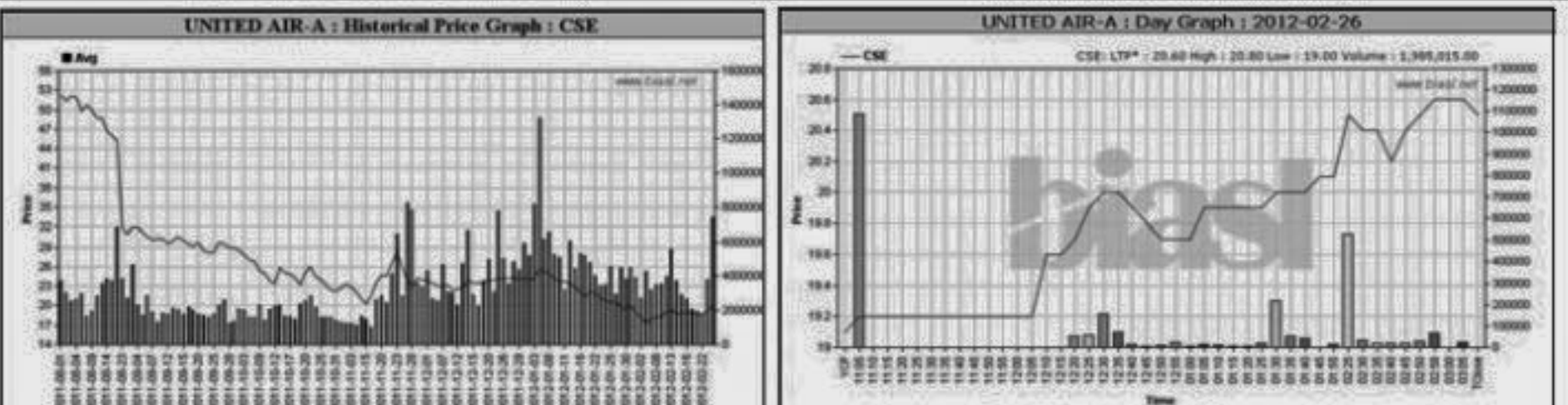


Chittagong Stock Exchange

Company Vol. Value % of Big Price Scale C.Pite BookV
UNITED AIR-A 1985015 39.733 6.94 30000 20.02...

Chittagong Stock Exchange

Company Market Cap. % of Average Price Scale BookV
Grameenphone-A 208,824 11.89 154.65 1.86 151.82...



Sectoral Turnover Summary

Sector DSE CSE Total
Bank 1052.84 22.73 162.19 28.32 1215.03 23.35

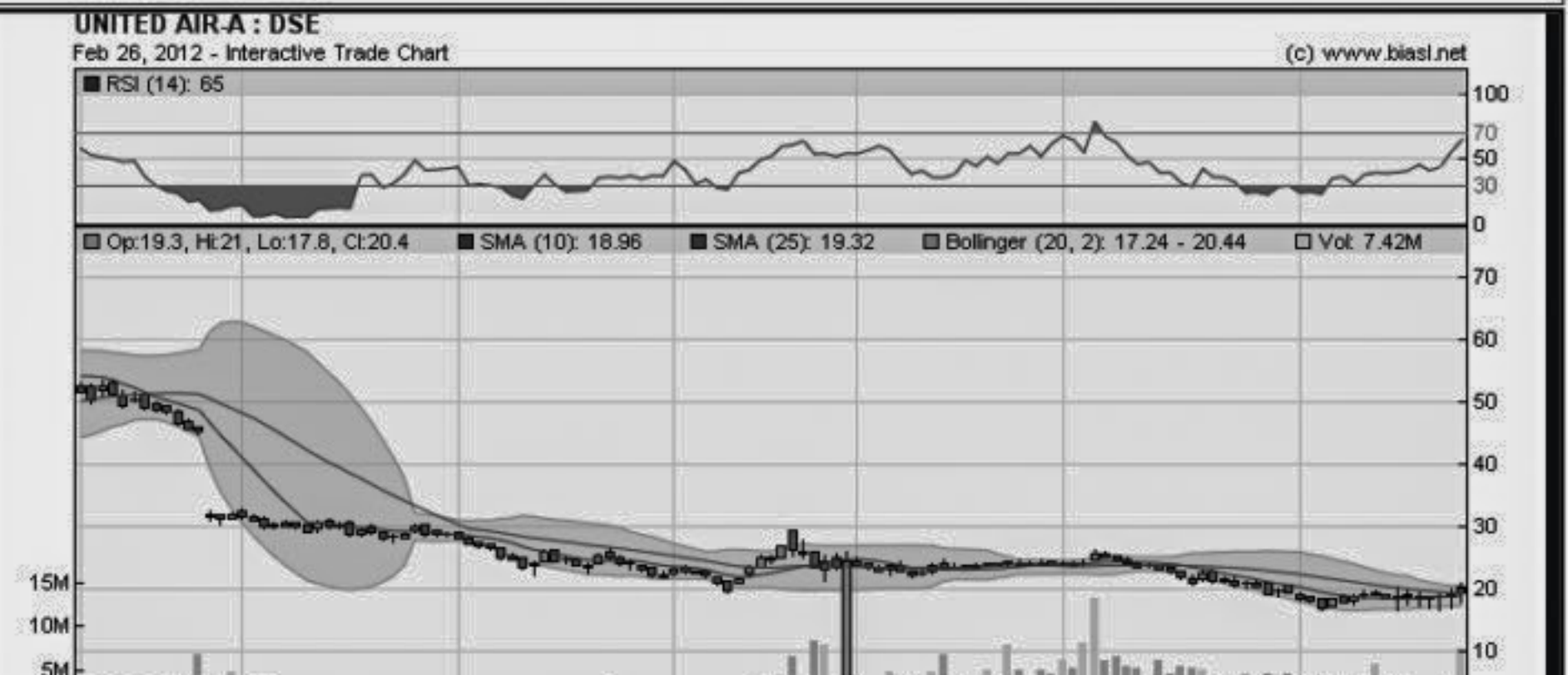
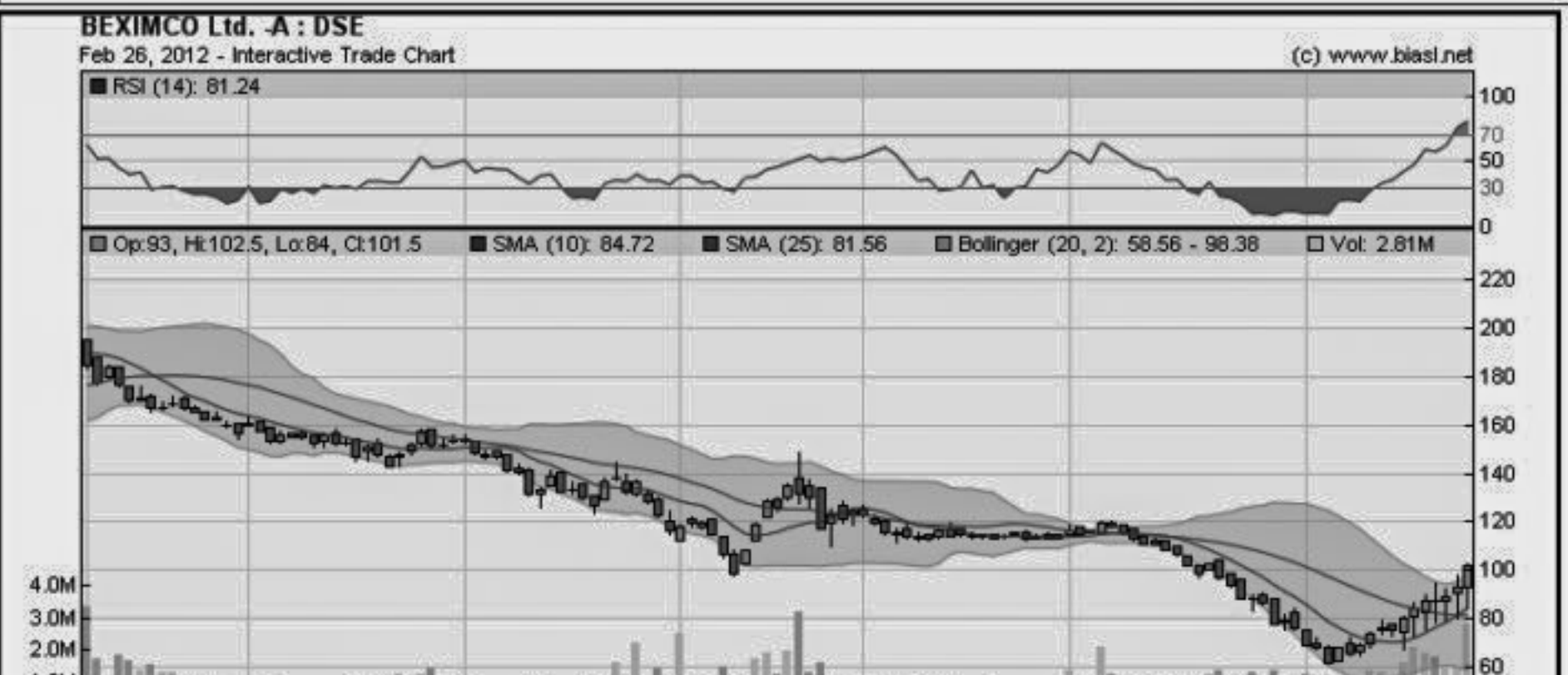
When to buy or sell

Investors follow many calculations of corporate performance when deciding if a stock is undervalued or overvalued. These range from the simple price-earnings ratio, or P/E, to far more technical ways of attempting to discern whether a stock is trending up or down.

RSI (Relative Strength Index): A technical momentum indicator that compares the size of recent gains to recent losses, in an attempt to determine overbought and oversold conditions of an asset.

Sectoral P/E & EPS

Sector P/E EPS(%)
Bank 9.25 9.25 41.14 41.14
NBFI 13.71 14.83 51.49 51.93



All the above PE and EPS are estimated to get a relative idea only and not calculated by any of the stock exchanges.

Notes: Capital Gainer / Loser tables are prepared on the basis of the close price change of the traded issues. "Close" or "C.Pite" is the Closing Price of the day. "Chn%" indicates the price difference in percentage.