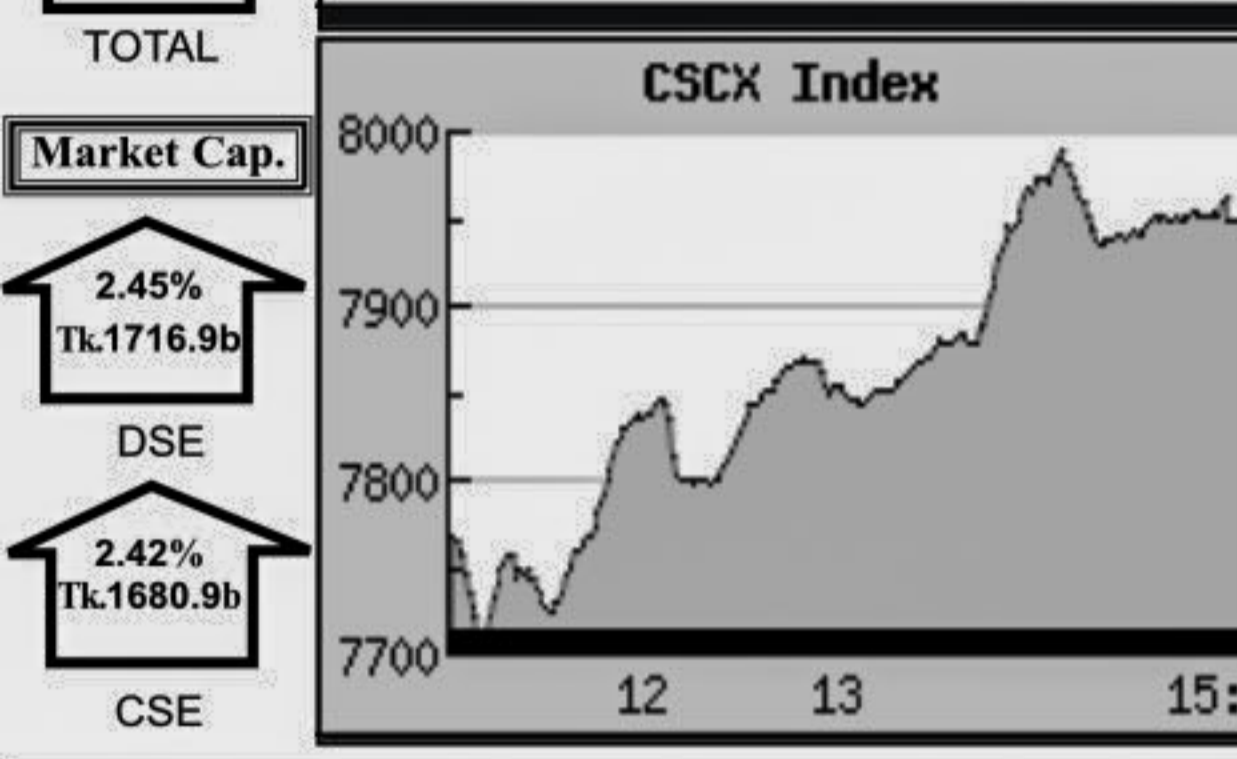
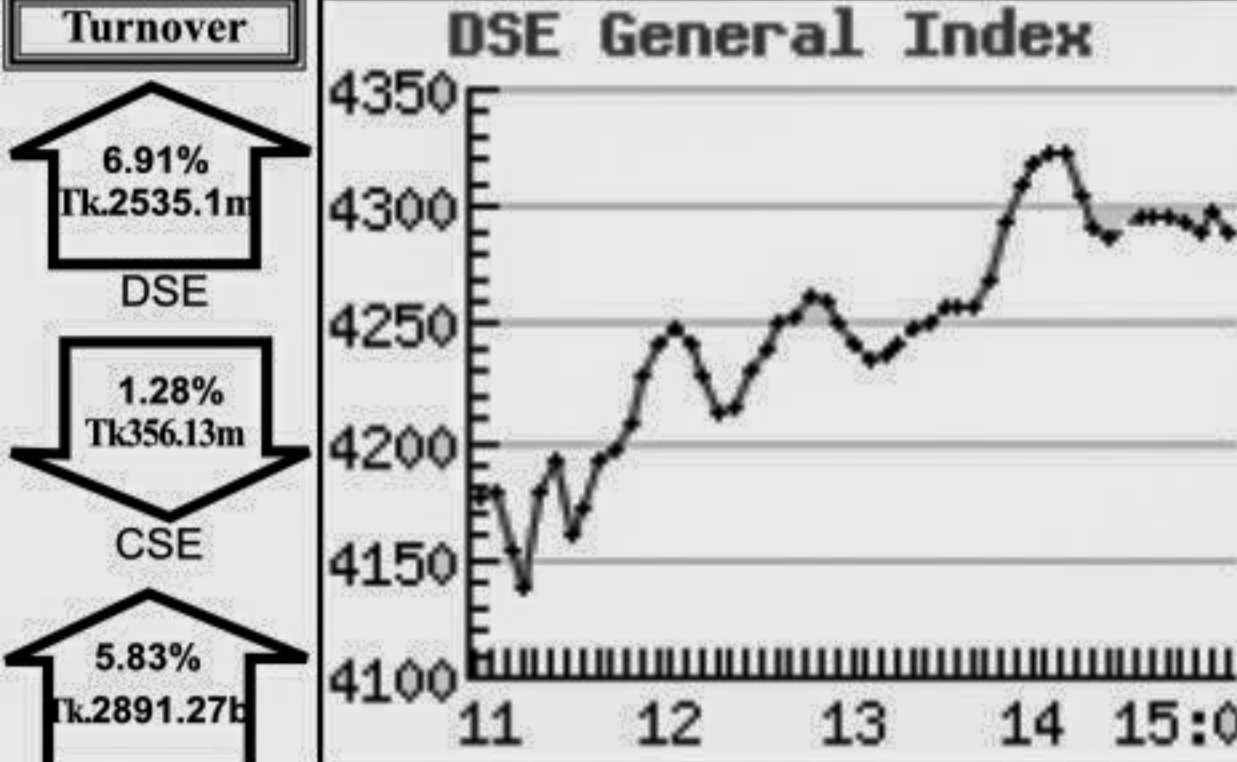


### Capital Market Highlights: February 15, 2012

INDEX			
	All Share	DSE General	DSE 20
DSE	3597.62577 (+2.61%)	4289.70900 (+2.69%)	3488.39117 (+1.54%)
CSE			
	All Share	CSE CSCX	CSE 30
CSE	12418.8256 (+2.30%)	7948.9410 (+2.36%)	11922.2243 (+2.48%)

Turnover			
	DSE	CSE	TOTAL
	6.91% Tk.2535.1m	1.28% Tk356.13m	5.83% Tk.2891.27m
Market Cap.			
	DSE	CSE	TOTAL
	2.45% Tk.1716.9b	2.42% Tk.1680.9b	



### Key Features - February 15, 2012

Indicators	DSE	CSE	TOTAL
Turnover (Million Taka)	2,535.14	356.13	2,891.27
Turnover (Volume)	63,071,926	9,724,880	72,796,806
No. of Contract	91,934	16,343	108,277
Traded Issues	256	177	256
Issue Gain (Avg. Price Basis)	224	151	224
Issue Loss (Avg. Price Basis)	31	24	31
Unchanged Issue (Avg. Price Basis)	1	2	1
Market Cap. Equity (Billion Tk.)	1,716.92	1,680.94	1,716.92
Market Cap. Equity (Billion US\$)	22.15	21.69	22.15

### Combined Turnover Leaders

Company	Volume (Share)	Value (M. Taka)	% of Total	Average Price
BEXIMCO Ltd. -A	1985161	154.55	5.35	77.85
Eastern Bank -A	2719630	150.84	5.22	55.46
National Bank -A	1791384	115.74	4.00	64.61
Grameenphone-A	700053	107.81	3.73	154.00
UCBL -A	2935993	103.37	3.58	35.21
Southeast Bank-A	2798390	73.25	2.53	26.18
UNITED AIR-A	3849641	72.35	2.50	18.79
Social Islami. B-A	3051273	69.54	2.41	22.79
One Bank -A	1682770	69.31	2.40	41.19
Mercantile Bank -A	2362250	68.51	2.37	29
City Bank -A	1609558	62.56	2.16	38.86
Maksons Spinning-A	2298425	54.93	1.90	23.89
Dhaka Bank -A	1177318	50.57	1.75	42.95
Uttara Bank -A	814080	46.68	1.61	57.35
LankaBangla Fin. -A	381950	40.72	1.41	106.61
Beximco Pharma -A	517476	35.66	1.23	68.92
N C C Bank -A	1338005	35.20	1.22	26.31
RAK Ceramics-A	549960	35.14	1.22	63.89
Standard Bank -A	1414580	35.11	1.21	24.82
Prime Bank-A	798641	34.51	1.19	43.21
R. N. Spinning-A	928250	33.28	1.15	35.86
Islami Bank BD -A	598320	31.20	1.08	52.15
BSRM Steels-A	299080	30.70	1.06	102.65
Beacon Pharma Ltd.-B	1252225	29.15	1.01	23.28
AB Bank -A	591450	28.14	0.97	47.58
Pubali Bank -A	668859	28.05	0.97	41.94
Fu-wang Ceramic-A	798810	27.44	0.95	34.35
EXIM Bank-A	1197649	27.40	0.95	22.88
Shinepukur Ceramics-A	767969	27.37	0.95	35.64
Keya Cosmetics -A	494283	25.74	0.89	52.08

### Sectoral Turnover Summary

Sector	DSE		CSE		Total	
	Milli. (Tk.)	%	Milli. Tk.	%		
Bank	1030.92	40.67	174.21	48.92	1205.13	41.68
NBFI	184.89	7.29	17.70	4.97	202.59	7.01
Investment	35.71	1.41	2.29	0.64	38.00	1.31
Engineering	148.72	5.87	15.19	4.27	163.92	5.67
Food & Allied	57.37	2.26	5.31	1.49	62.67	2.17
Fuel & Power	92.43	3.65	6.78	1.90	99.22	3.43
Jute	0.93	0.04			0.93	0.03
Textile	201.47	7.95	21.27	5.97	222.73	7.70
Pharma & Chemical	120.17	4.74	17.18	4.82	137.35	4.75
Paper & Packaging	1.32	0.05	3.09	0.87	4.41	0.15
Service	20.49	0.81	0.06	0.02	20.55	0.71
Leather	12.89	0.51	9.82	2.72	22.71	0.79
Ceramic	81.23	3.20	10.17	2.85	91.40	3.16
Cement	55.85	2.20	2.99	0.84	58.85	2.04
Information Technology	22.38	0.88	6.42	1.80	28.80	1.00
General Insurance	120.91	4.77	0.71	0.20	121.61	4.21
Life Insurance	41.25	1.63	12.08	3.39	53.32	1.84
Telecom	95.73	3.78	17.68	4.96	113.41	3.92
Travel & Leisure	54.67	2.16	32.24	9.05	86.91	3.01
Miscellaneous	151.55	5.98	0.94	0.26	152.49	5.27
Debtenture	4.28	0.17	0.00	0.00	4.28	0.15

### Sectoral P/E & EPS

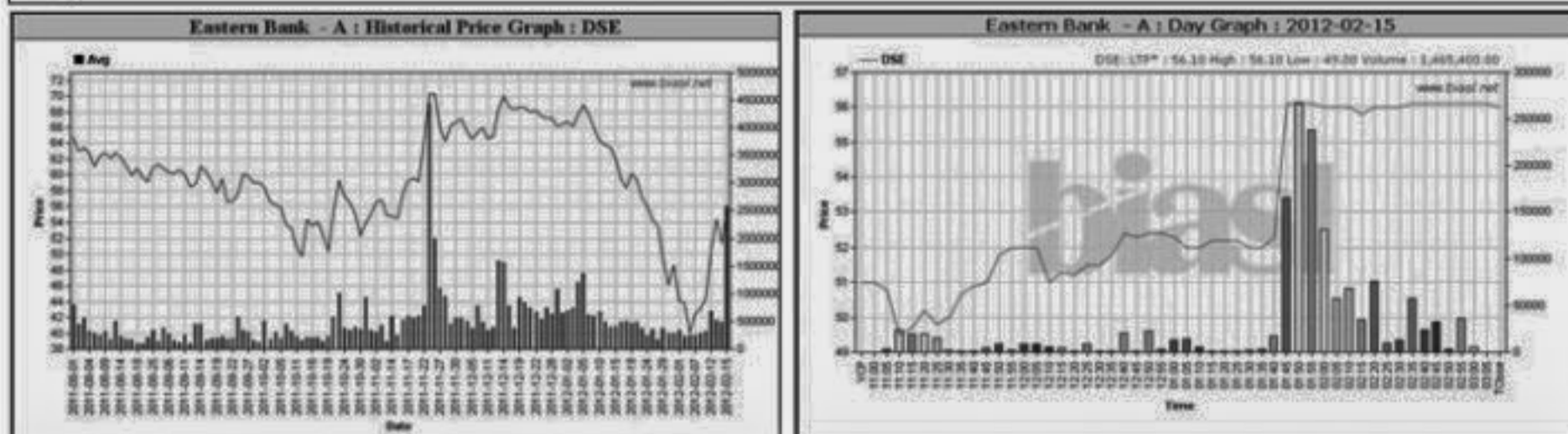
Sector	P/E		EPS(%)	
	DSE	CSE	DSE	CSE
Bank	8.46	8.46	45.95	45.95
NBFI	12.08	13.20	54.53	55.10
Investment	5.74	6.02	16.80	16.80
Engineering	19.28	19.66	42.94	40.83
Food & Allied	14.13	13.67	126.72	128.70
Fuel & Power	11.74	11.69	61.87	61.87
Textile	11.24	10.87	22.10	21.99
Pharma & Chemical	19.84	19.16	65.36	56.96
Paper & Printing	25.25	24.26	12.41	13.27
Service	7.23	7.21	65.49	65.49
Leather	12.16	12.99	104.33	129.27
Ceramic	21.11	21.09	24.40	24.40
Cement	13.85	13.98	67.36	67.36
IT	17.38	17.39	12.37	12.37
General Insurance	14.29	13.90	37.80	38.50
Life Insurance	16.96	17.72	95.84	95.84
Telecom	11.01	11.01	139.90	139.90
Travel & Leisure	18.32	26.51	9.85	7.10
Miscellaneous	5.10	5.13	135.63	131.73
Stock Exchanges	10.68	10.65	51.20	50.96

All the above PE and EPS are estimated to get a relative idea only and not calculated by any of the stock exchanges.

Prepared exclusively for Daily Star by Business Information Automation Service Line (BIASL), on the basis of information collected from daily stock quotations and audited reports of the listed companies. High level of caution has been taken to collect and present the above information and data. The publisher will not take any responsibility if any body uses this information and data for his/her investment decision. For any query please email to biasl@bol-online.com or call 01552153562 or go to www.biasl.net

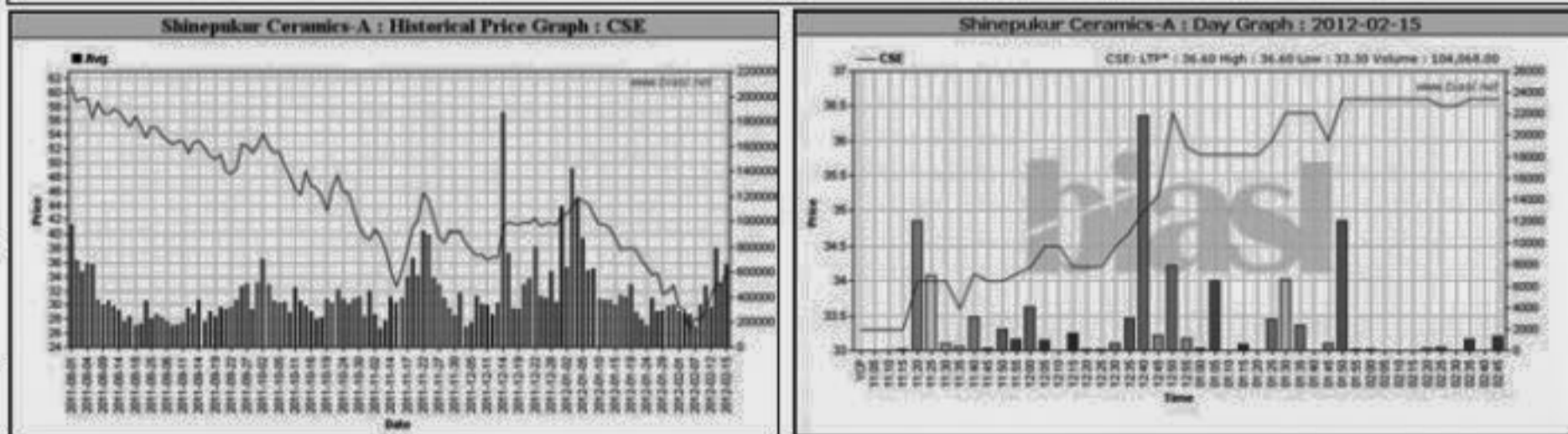
### Capital Gainers

Dhaka Stock Exchange														
Company	Price Chn. (%)		Price Scale				Turnover		BookV		EPS		PE	
	Close	Avg.	Avg.	Close	DayHi	DayLo	Yr Hi	YrLo	M.Tk	Per S	EPS	PE	Per S	EPS
Eastern Bank -A	9.80	7.95	55.51	56.00	56.10	46.10	105.0	38.9	142420	26.74	5.54	10.02		
In Tech Online -A	9.48	3.70	22.40	23.10	23.20	20.00	36.9	16.5	8317	11.04	0.96	23.33		
Anwar Galvanizing-Z	9.26	7.15	23.53	23.60	23.70	23.10	45.3	16.6	0.400	7.57	0.52	45.25		
Meghna Con. Milk -B	8.62	6.28	18.62	18.90	19.10	17.40	65.5	15.5	0.605	-9.34	-4.43	-4.20		
Modern Dyeing-Z	8.59	8.33	45.50	45.50	45.50	45.50	60.0	29.2	0.002	9.35	-0.64	-71.09		
6th ICB M F-A	8.56	8.86	40.43	40.60	40.90	37.20	79.0	33.9	0.190	26.73	10.58	3.82		
Agrani Insurance -A	8.31	6.86	36.12	36.50	36.90	34.70	82.9	28.2	2.908	12	1.59	22.72		
EBL NRB M.F.-A	8.24	8.24	9.20	9.20	9.20	11.2	7.8	0.005	0	0	-	-		
Beximco Syn.-A	8.10	5.47	33.92	34.70	35.00	28.90	57.5	25.5	19.066	29.4	0.4	84.80		
Berger Paints-A	7.45	7.31	479.33	479.10	481.90	472.50	817.0	431.0	0.719	54.64	30.39	15.77		



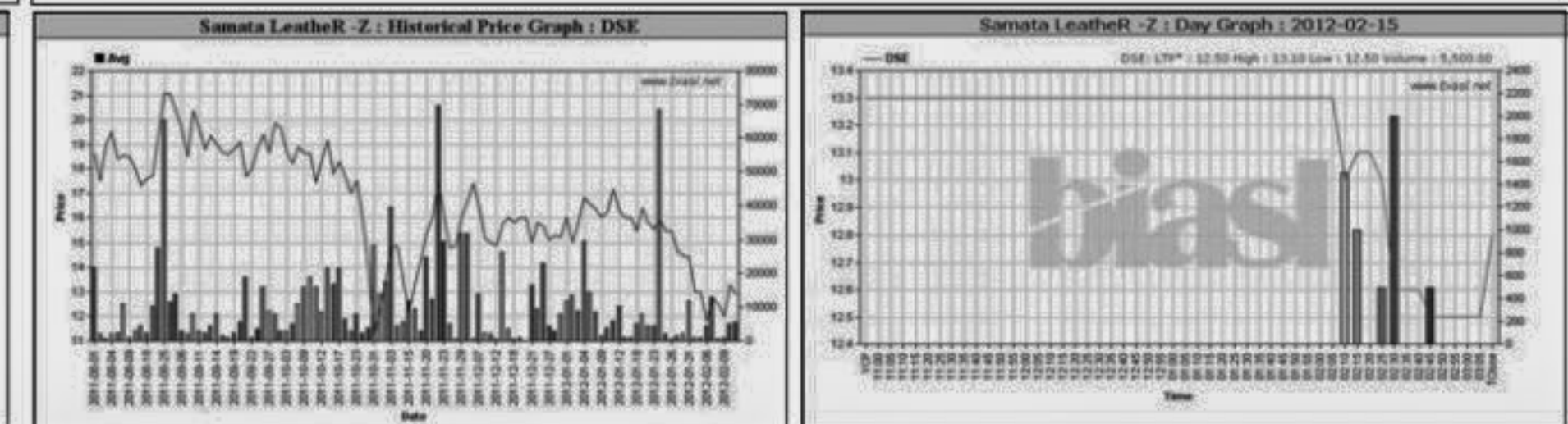
### Chittagong Stock Exchange

Chittagong Stock Exchange														
Company	Price Chn. (%)		Price Scale				Turnover		BookV		EPS		PE	
	Close	Avg.	Avg.	Close	DayHi	DayLo	Yr Hi	YrLo	M.Tk	Per S	EPS	PE	Per S	EPS
Shinepukur Ceramics-A	9.91	7.48	35.19	36.60	36.60	33.30	101.0	5.0	3.714	24.58	2.28	15.43		
Monno Ceramic -A	9.88	9.88	44.50	44.50	44.50	44.50	102.0	35.1	0.013	18.47	1.49	29.87		
Eastern Bank -A	9.78	5.43	54.73	56.10	56.20	49.00	108.0	38.5	8.424	26.74	5.54	9.88		
Nitol Insurance -A	9.77	9.84	47.23	47.20	47.30	47.20	50.0	50.0	0.047	12.67	1.91	24.73		
Beximco Syn.-A	9.75	6.24	33.71	34.90	34.90	31.20	40.6	40.6	3.888	29.4	0.4	84.28		
Dhaka Ins. Ltd.-A	9.41	9.52	79.13	79.10	79.50	78.50	98.0	98.0	0.158	29.33	10.95	7.23		
SonarBangla Ins.-A	8.93	7.76	36.64	36.60	36.90	36.40	40.4	40.4	0.092	11.84	1.48	24.76		
Rupali Life Insur.-A	8.31	8.32	173.31	173.30	176.00	170.00	152.0	152.0	0.390	31.25	3.75	46.22		
Mercantile Insur.-A	8.24	7.32	36.20	36.80	36.80	36.00	40.9	40.9	0.029	14.35	1.85	19.57		
Brac Bank -A	7.20	6.43	39.87	40.20	40.90	38.50	66.0	29.0	2.460	29.11	5.68	7.02		



### Capital Losers

Dhaka Stock Exchange														
Company	Price Chn. (%)		Price Scale				Turnover		BookV		EPS		PE	
	Close	Avg.	Avg.	Close	DayHi	DayLo	Yr Hi	YrLo	M.Tk	Per S	EPS	PE	Per S	EPS
LR Global BD MF1-A	-5.05	-3.43	9.56	9.40	10.00	9.30	11.0	9.0	0.043	0	0	-		
Samata Leather-Z	-3.76	-2.93	12.91	12.80	13.10	12.50	36.5	10.1	0.071	12.04	-0.13	-99.31		
ICB AMCL 1st NRB -A	-3.04	-2.62	25.62	25.50	26.70	25.20	46.8	22.5	0.269	17.61	4.81	5.33		
PrimeFin. 1st MF-A	-2.19	-1.45	13.58	13.40	14.00	13.10	26.2	13.1	4.487	26.31	2.83	4.80		
National Tea -A	-1.70	-1.70	521.00	521.00	521.00	521.00	629.8	435.0	1.042	74	26.59	19.59		
Prime Insur -A	-1.59	-0.86	49.79	49.50	52.00	47.50	129.0	39.0	4.594	12.33	3.11	16.01		
Rupali Insur-A	-1.57	-1.19	57.08	56.50	59.00	55.10	175.0	42.8	5.993	37.95	3.68	15.51		
DBH 1st MF-A	-1.54	-1.06	6.52	6.40	6.80	6.40	15.4	6.0	2.313	11.94	1.9	3.43		
LankaBangla Fin. -A	-1.40	-2.23	106.55	106.00	109.00	104.00	445.0	104.0	36.643	21.5	4.21	25.31		
8th ICB M F-A	-1.17	-0.97	51.00	50.90	55.00	49.20	83.0	44.5	0.204	29.54	12.33	4.14		



### Chittagong Stock Exchange

Chittagong Stock Exchange														
Company	Price Chn. (%)		Price Scale				Turnover		BookV		EPS		PE	
	Close	Avg.	Avg.	Close	DayHi	DayLo	Yr Hi	YrLo	M.Tk	Per S	EPS	PE	Per S	EPS
Progressive Life-A	-23.66	-23.80	125.23	125.20	125.80	125.00	189.5	189.5	0.175	26.05	1.75	71.56		
Power Grid Co. -A	-10.00	-10.04	42.30	42.30	42.30	42.30	67.2	67.2	0.021	45.71	2.21	19.14		
Prime Insur -A	-4.56	-4.07	48.32	48.10	52.70	47.90	1							