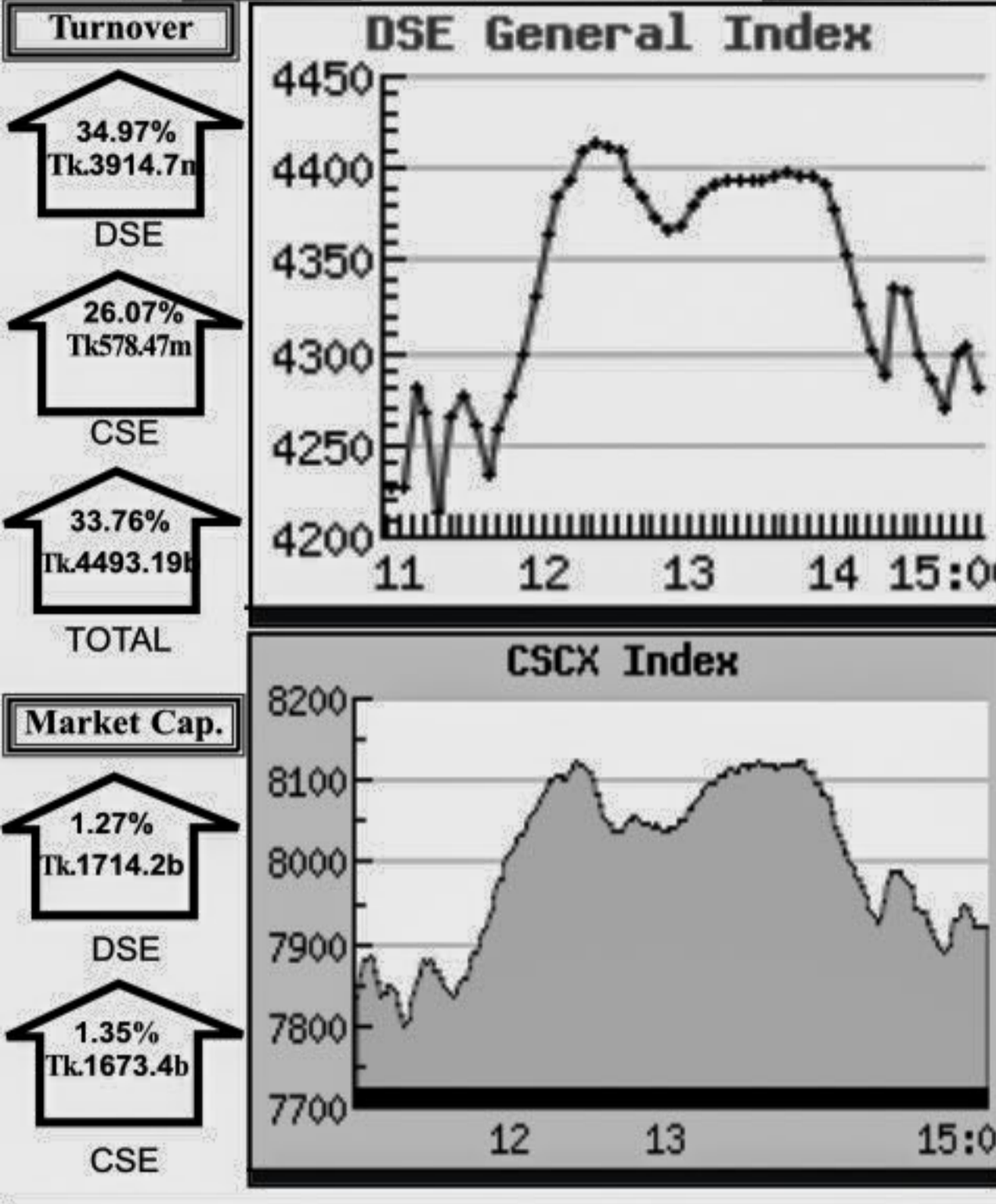


Capital Market Highlights: February 13, 2012

INDEX table showing All Share, DSE General, DSE 20, All Share, CSE CSCX, CSE 30 with percentage changes and values.



Capital Gainers

Dhaka Stock Exchange table listing top gainers like RAK Ceramics, Jute Spinners, and Maksons Spinning.

Capital Losers

Dhaka Stock Exchange table listing top losers like PrimeFin 1st MF-A and Standard Ceramic-B.

Turnover Leaders

Dhaka Stock Exchange table listing high turnover companies like Grameenphone, National Bank, and UCBL.

Market Cap. Leader

Dhaka Stock Exchange table listing market capitalization leaders like Grameenphone, National Bank, and UCBL.

Key Features - February 13, 2012

Summary table for key market indicators including turnover, issue gain/loss, and market capitalization.

Combined Turnover Leaders

Table listing combined turnover leaders across various sectors like Banking, FMCG, and Textiles.

Sectoral Turnover Summary

Table summarizing turnover by sector for DSE, CSE, and Total markets.

Sectoral P/E & EPS

Table showing P/E ratios and EPS for various sectors across DSE and CSE.

Chittagong Stock Exchange

Table listing top gainers on the Chittagong Stock Exchange.

Chittagong Stock Exchange

Table listing top losers on the Chittagong Stock Exchange.

Chittagong Stock Exchange

Table listing turnover leaders on the Chittagong Stock Exchange.

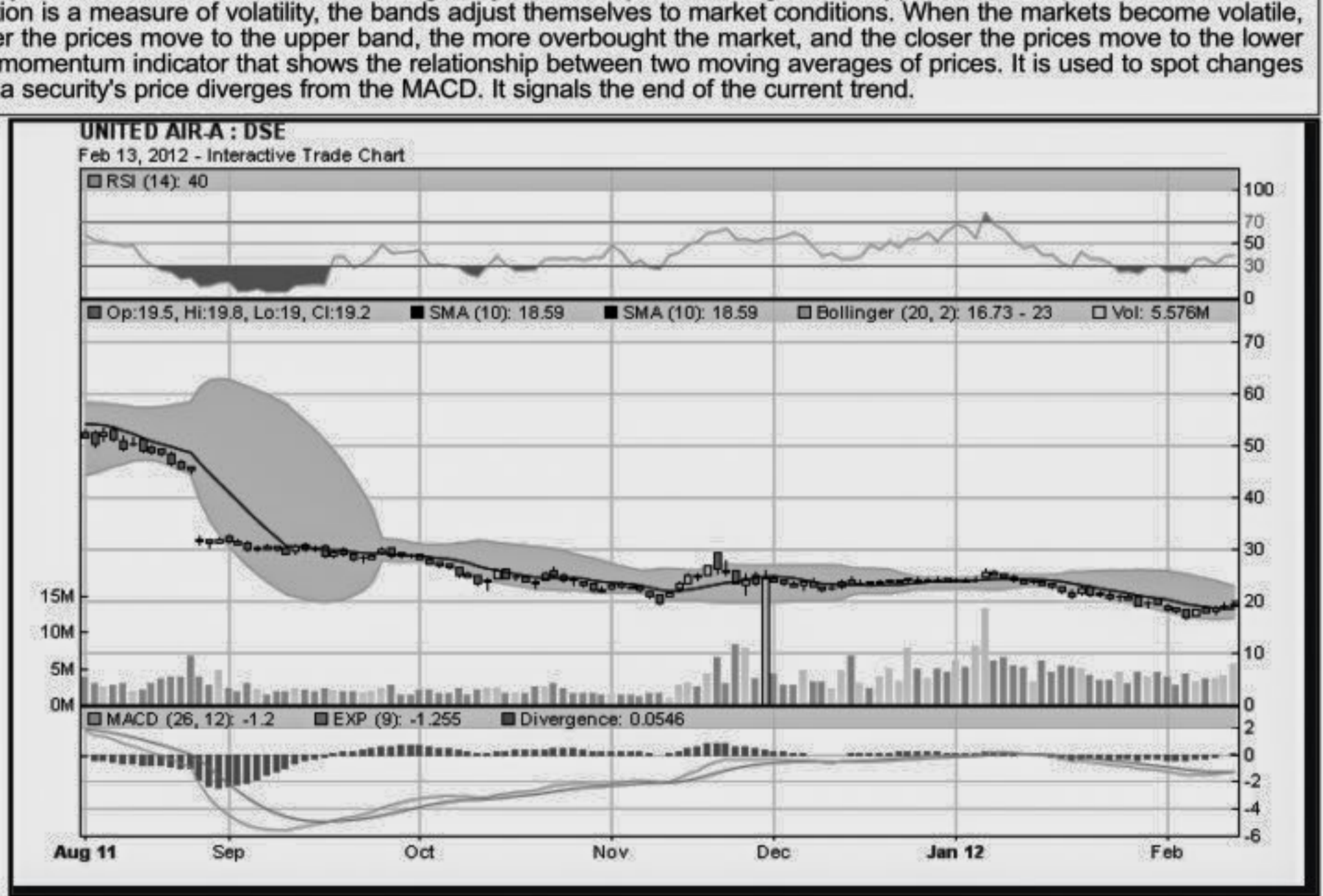
Chittagong Stock Exchange

Table listing market cap. leaders on the Chittagong Stock Exchange.

When to buy or sell: Investors follow many calculations of corporate performance when deciding if a stock is undervalued or overvalued. These range from the simple price-earnings ratio, or P/E, to far more technical ways...



When to buy or sell: Investors follow many calculations of corporate performance when deciding if a stock is undervalued or overvalued. These range from the simple price-earnings ratio, or P/E, to far more technical ways...



All the above PE and EPS are estimated to get a relative idea only and not calculated by any of the stock exchanges.

Notes: Capital Gainer / Loser tables are prepared on the basis of the close price change of the traded issues. "Close" or "C.Price" or "D Clo." is the Closing Price of the day. "Chn %" indicates the price difference in percentage. "Avg" prices indicate...