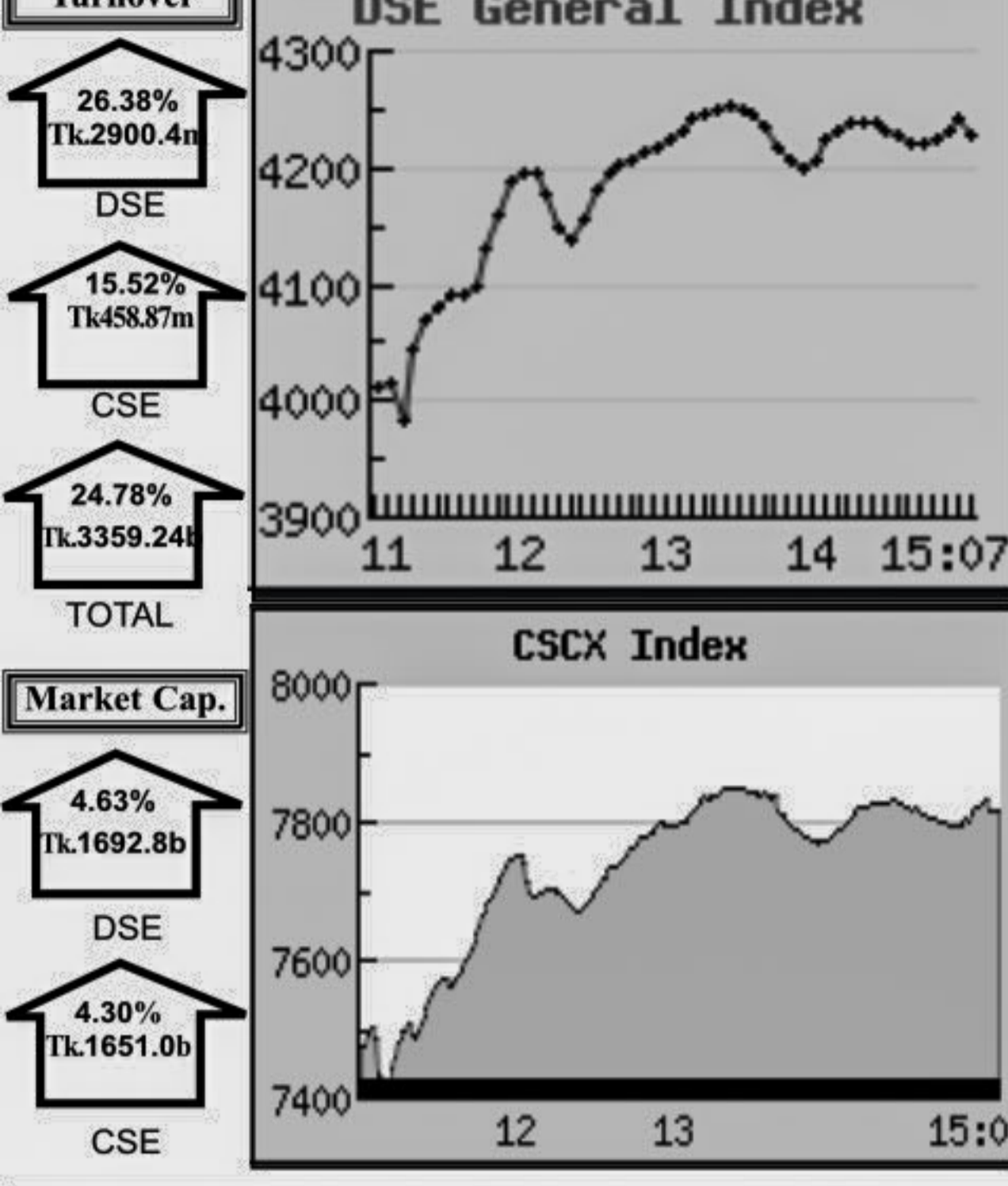


Capital Market Highlights: February 12, 2012

INDEX table showing All Share, DSE General, DSE 20, CSE, CSE CSCX, and CSE 30 with their respective closing values and percentage changes.



Key Features - February 12, 2012

Table summarizing key market indicators including Turnover (Million Taka), Turnover (Volume), No. of Contract, Traded Issues, Issue Gain/Loss, and Market Cap. Equity.

Combined Turnover Leaders

Table listing top turnover leaders across various sectors like National Bank, Gramenphone-A, BEXIMCO Ltd., etc., with columns for Company, Volume, Value, % of Total, and Average Price.

Sectoral Turnover Summary

Table showing turnover summary for various sectors including Bank, NBFI, Investment, Engineering, Food & Allied, Fuel & Power, etc., with DSE, CSE, and Total turnover figures.

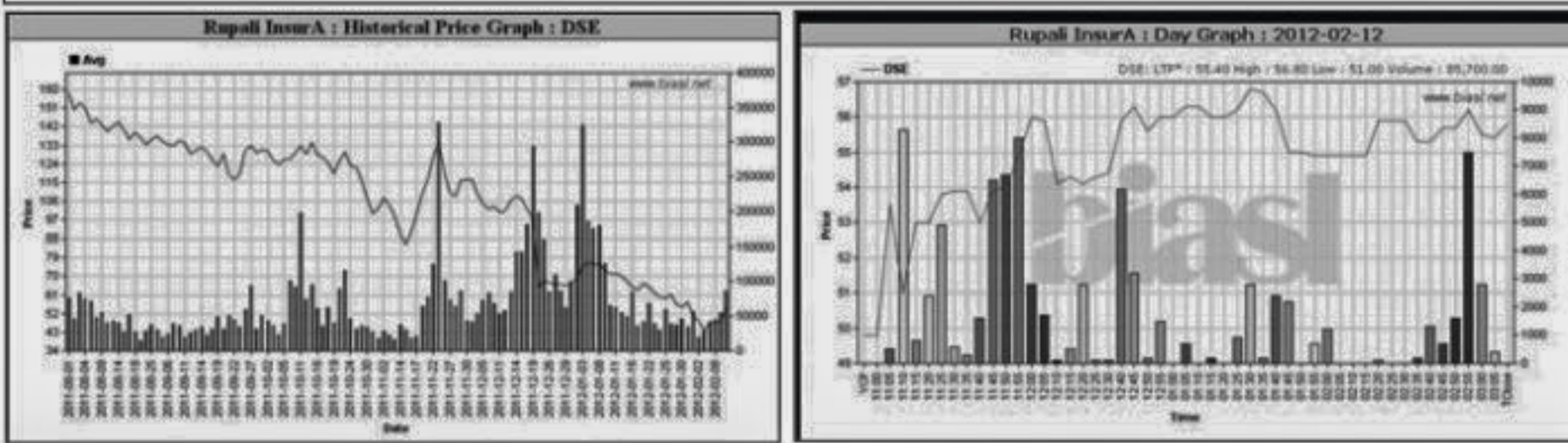
Sectoral P/E & EPS

Table providing P/E and EPS ratios for various sectors such as Bank, NBFI, Investment, Engineering, etc., comparing DSE and CSE figures.

All the above PE and EPS are estimated to get a relative idea only and not calculated by any of the stock exchanges.

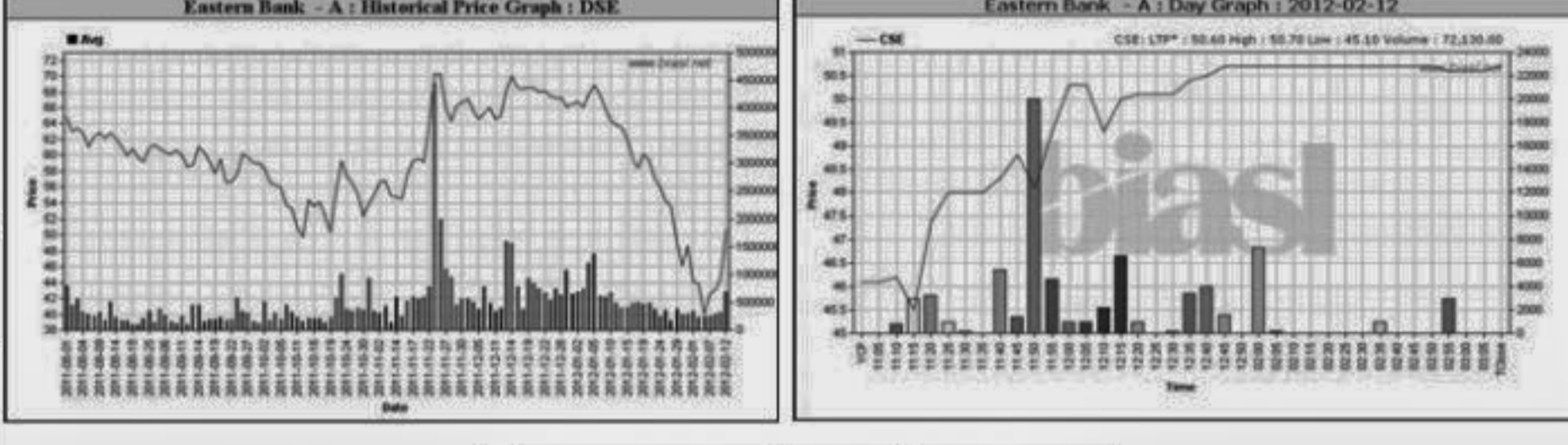
Capital Gainers

Table of capital gainers at the Dhaka Stock Exchange, listing companies like Rupali Insur, Modern Dyeing, Hakkani P& Paper, etc., with their price changes and volumes.



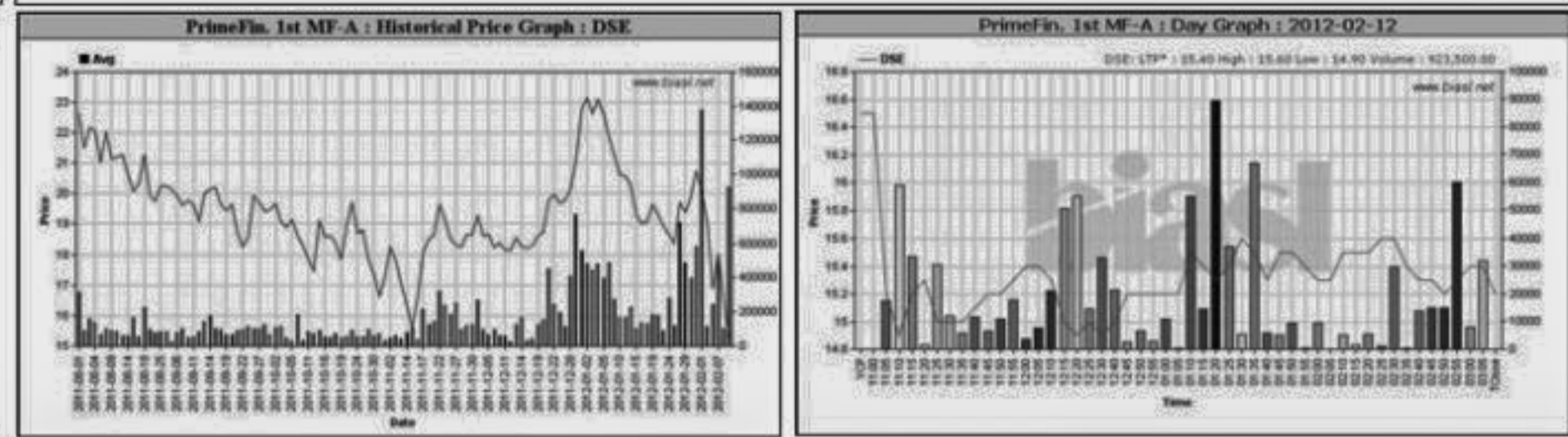
Chittagong Stock Exchange

Table of capital gainers at the Chittagong Stock Exchange, listing companies like Eastern Bank, Usmania Glass, Rupali Bank, etc.



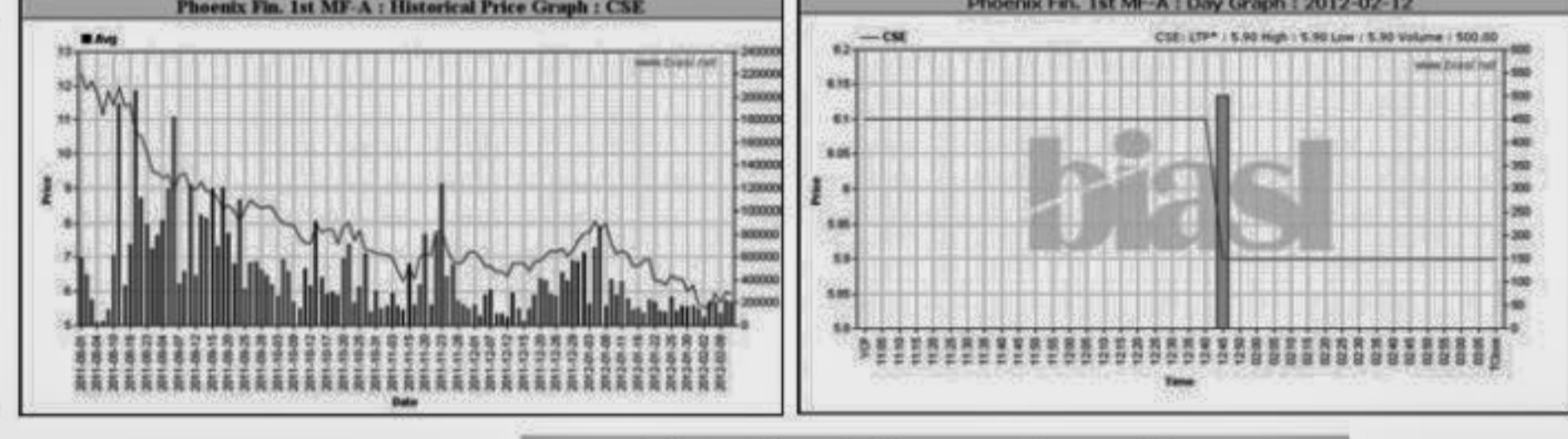
Capital Losers

Table of capital losers at the Dhaka Stock Exchange, listing companies like PrimeFin. 1st MF-A, AB Bank, Reckitt Benckiser, etc.



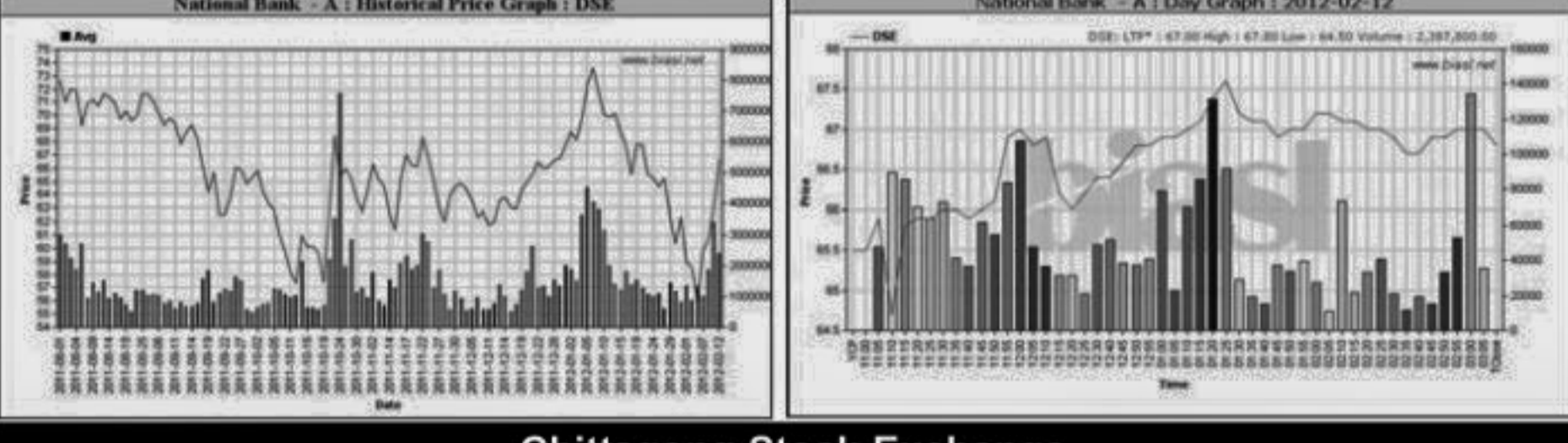
Chittagong Stock Exchange

Table of capital losers at the Chittagong Stock Exchange, listing companies like PrimeFin. 1st MF-A, Phoenix Fin., BANGZ, etc.



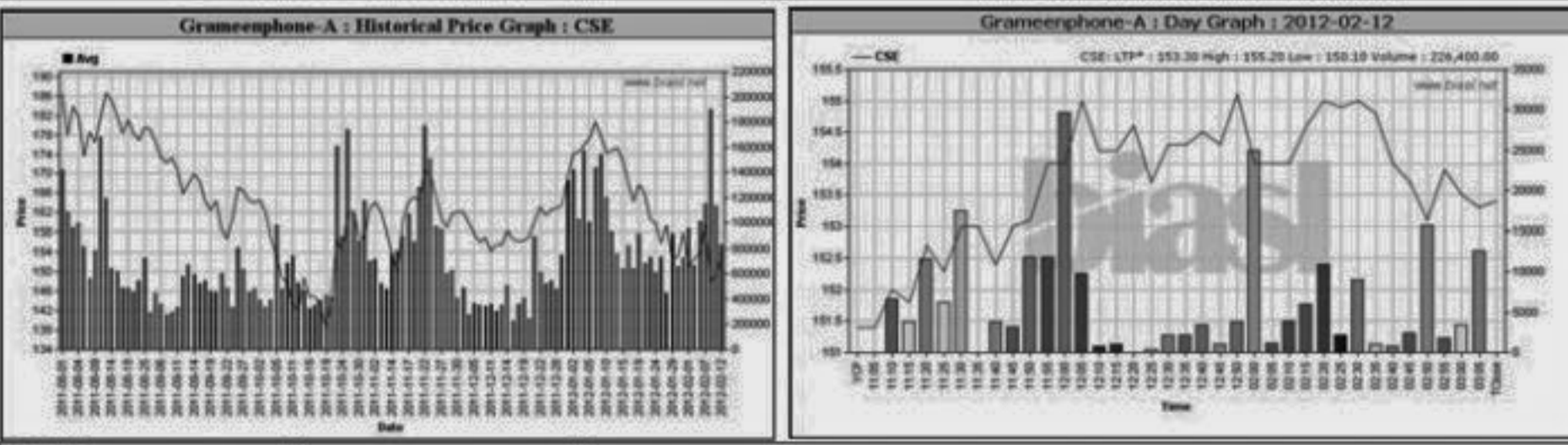
Turnover Leaders

Table of turnover leaders at the Dhaka Stock Exchange, listing companies like National Bank, Gramenphone-A, BEXIMCO Ltd., etc., with volume and value data.



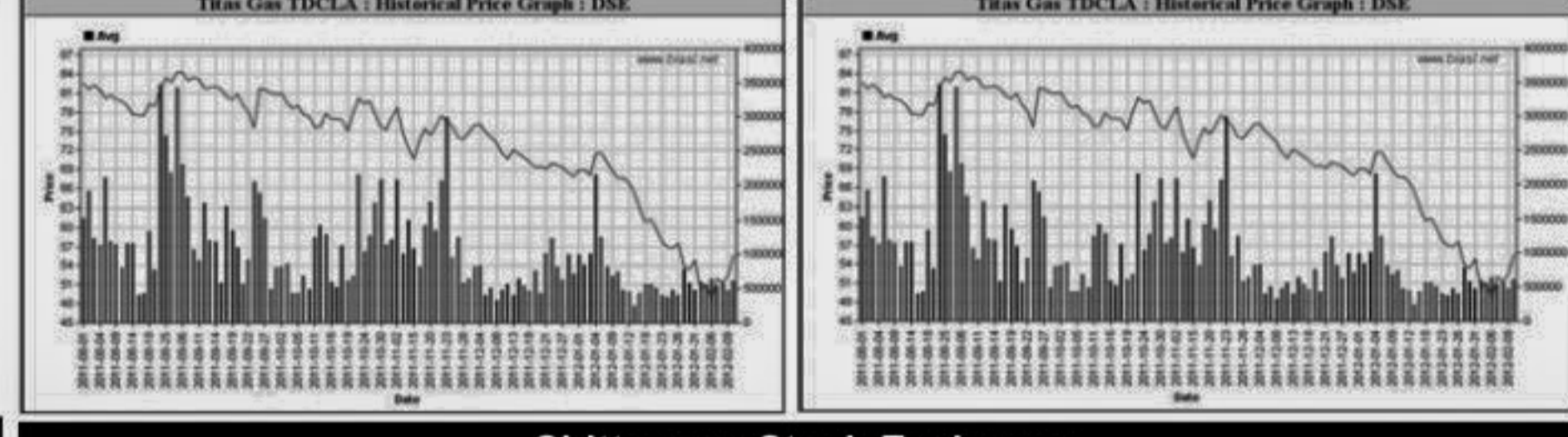
Chittagong Stock Exchange

Table of turnover leaders at the Chittagong Stock Exchange, listing companies like Gramenphone-A, National Bank, ICBL, etc.



Market Cap. Leader

Table of market capitalization leaders at the Dhaka Stock Exchange, listing companies like Gramenphone-A, National Bank, Titas Gas, etc., with market cap and price data.



When to buy or sell

Investors follow many calculations of corporate performance when deciding if a stock is undervalued or overvalued. These range from the simple price-earnings ratio, or P/E, to far more technical ways of attempting to discern whether a stock is trending up or down. Here are some of the most common.

RSI (Relative Strength Index): A technical momentum indicator that compares the size of recent gains to recent losses, in an attempt to determine overbought and oversold conditions of an asset. Stocks with more or strong gains have a higher RSI than stocks that had more or stronger losses. SMA (Simple Moving Average): A simple, or arithmetic, moving average is the average stock price over a certain period of time. It adds up the closing price of the security for a given period and then divides the total by the number of intervals. Short-term averages respond quickly to changes in the price of the stock, so appear less steady, while long-term averages are slow to react. EMA (Exponential Moving Average): A type of moving average that is similar to a simple moving average, except that more weight is given to the latest data. The exponential moving average is also known as "exponentially weighted moving average". Bollinger Band: A band that provides a relative definition of high and low, it was developed by famous technical trader John Bollinger. By definition, prices are high at the upper band and low at the lower band. The band usually plots two standard deviations away from a simple moving average. Because the standard deviation is a measure of volatility, the bands adjust themselves to market conditions. When the markets become volatile, the bands widen (move further away from the average); during less volatile periods, the bands contract. The closer the prices move to the upper band, the more overbought the market, and the closer the prices move to the lower band, the more oversold the market. MACD (Moving Average Convergence Divergence): A trend-following momentum indicator that shows the relationship between two moving averages of prices. It is used to spot changes in the strength, direction, momentum, and duration of a trend in a stock's price. Divergence: This happens when a security's price diverges from the MACD. It signals the end of the current trend.



Notes: Capital Gainer / Loser tables are prepared on the basis of the close price change of the traded issues. "Close" or "C.Price" or "D Clo." is the Closing Price of the day. "Chn %" indicates the price difference in percentage. "Avg" prices indicate everyday average prices of all transactions of the day. "DayHi"/"D Hi" and "DayLo"/"D Lo" indicate the highest and lowest transacted price of the day. "Yr.Hi" and "Yr. Lo" indicate the highest and lowest transacted price last one running year, everyday the range moves by one. "P Day" Previous Day. EPS is based on available latest audited accounts of the companies. EPS & Book value per share are diluted at bookclosing date whenever it is applicable. Only the positive earning companies are considered in calculating the PER and EPS of the Sectors and Stock Exchanges.