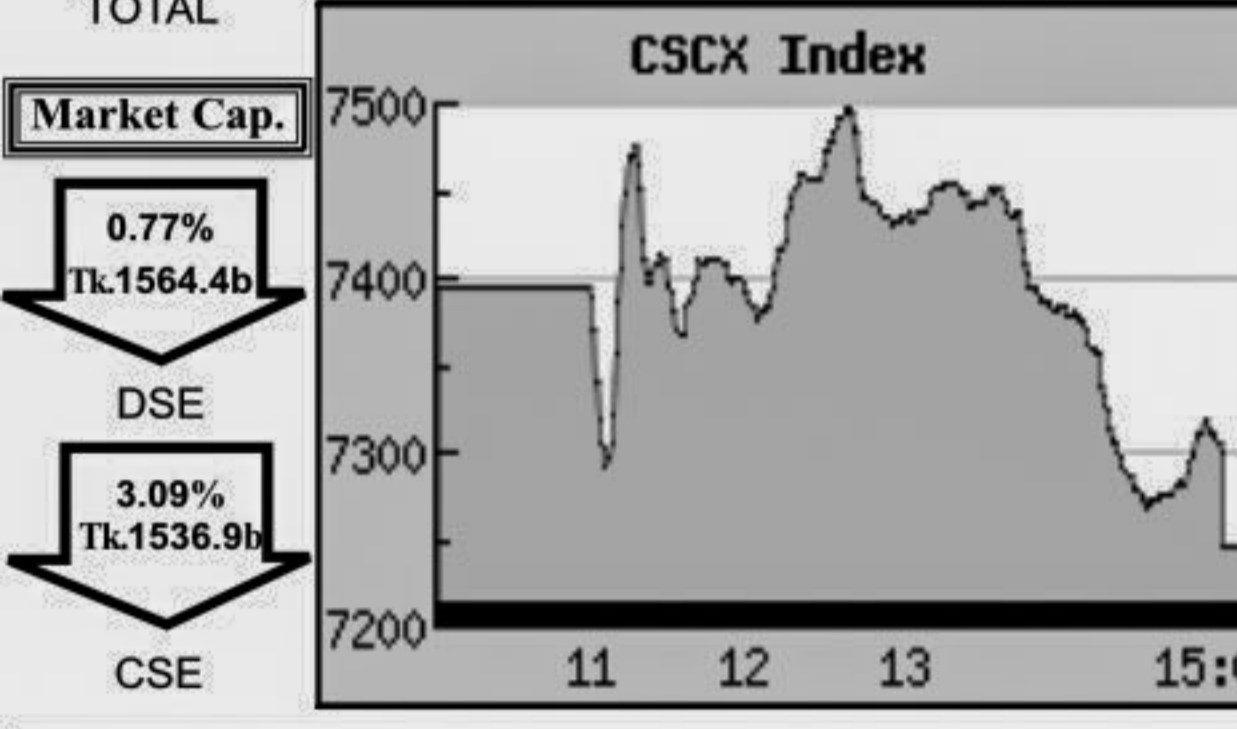
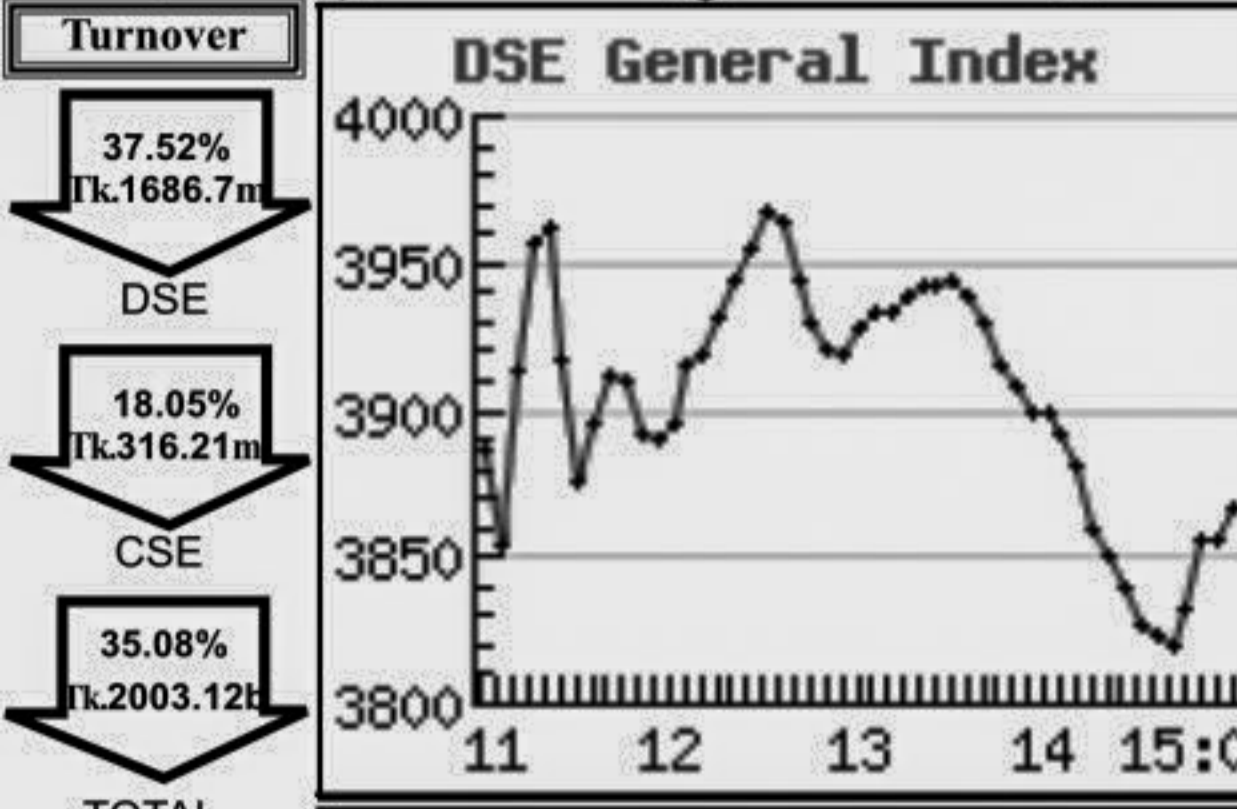


Capital Market Highlights: February 02, 2012

INDEX			
	All Share	DSE General	DSE 20
DSE	3235.36123 (-) 1.06%	3845.65600 (-) 1.07%	3142.94045 (-) 0.13%
CSE			
	All Share	CSE CSCX	CSE 30
CSE	11353.3621 (-) 1.56%	7247.1460 (-) 1.63%	10594.6891 (-) 0.35%

Turnover			
	DSE	CSE	TOTAL
	37.52% Tk.1686.7m	18.05% Tk.316.21m	35.08% Tk.2003.12m
Market Cap.			
	DSE	CSE	TOTAL
	0.77% Tk.1564.4b	3.09% Tk.1536.9b	



Key Features - February 02, 2012

Indicators	DSE	CSE	TOTAL
Turnover (Million Taka)	1,686.74	316.21	2,002.95
Turnover (Volume)	43,208,397	8,511,726	51,720,123
No. of Contract	77,120	14,646	91,766
Traded Issues	260	184	260
Issue Gain (Avg. Price Basis)	40	30	40
Issue Loss (Avg. Price Basis)	216	153	216
Unchanged Issue (Avg. Price Basis)	4	-	4
Market Cap. Equity (Billion Tk.)	1,564.40	1,536.92	1,564.40
Market Cap. Equity (Billion US\$)	20.19	19.83	20.19

Combined Turnover Leaders

Company	Volume (Share)	Value (M. Taka)	% of Total	Average Price
Grameenphone-A	833600	127.89	6.39	153.41
BEXIMCO Ltd. -A	1581043	109.46	5.47	69.23
UNITED AIR-A	3896998	71.30	3.56	18.3
National Bank -A	1025476	59.99	2.99	58.50
UCBL -A	1531026	46.91	2.34	30.64
Social Islami. B-A	2073540	41.56	2.08	20.05
R. N. Spinning-A	1213375	40.86	2.04	33.68
Aftab Auto.-A	404608	39.73	1.98	98.19
Square Pharma -A	198730	37.91	1.89	190.76
Beacon Pharma Ltd.-B	1632475	37.48	1.87	22.96
Fu-wang Ceramic-A	1129250	37.45	1.87	33.16
BSRM Steels-A	366800	34.72	1.73	94.66
LankaBangla Fin. -A	240050	30.12	1.50	125.49
Titas Gas TDCLA	535550	28.23	1.41	51
Keya Cosmetics-A	533512	27.04	1.35	50.69
LafargeS Cement-Z	1078500	26.07	1.30	24.17
Beximco Pharma -A	414946	25.57	1.28	61.62
Jamuna Oil -A	166500	25.29	1.26	151.92
Islami Bank BD -A	537390	25.06	1.25	46.63
People's Leasing-A	559200	24.70	1.23	44.18
Southeast Bank-A	1085070	23.64	1.18	21.78
AB Bank -A	551230	22.93	1.14	41.59
M.I. Cement-A	342150	22.93	1.14	67.02
Maksons Spinning-A	929250	22.66	1.13	24.38
Mercantile Bank -A	944250	22.49	1.12	23.82
One Bank -A	637080	20.40	1.02	32.02
City Bank -A	613766	20.22	1.01	32.94
Zahintex Ind.-N	516500	18.83	0.94	36.47
Summit Power -A	352637	18.14	0.91	51.45
MJL BD Ltd.-A	255839	17.89	0.89	69.93

Sectoral Turnover Summary

Sector	DSE		CSE		Total	
	Mill. (Tk.)	%	Mill. Tk.	%	Mill. Tk.	%
Bank	391.78	23.23	89.68	28.35	481.46	24.04
NBFI	123.25	7.31	13.79	4.36	137.04	6.84
Investment	31.59	1.87	3.16	1.00	34.75	1.73
Engineering	145.43	8.62	37.96	12.00	183.38	9.15
Food & Allied	52.59	3.12	5.17	1.63	57.76	2.88
Fuel & Power	132.35	7.85	7.78	2.46	140.13	7.00
Jute	2.12	0.13	-	-	2.12	0.11
Textile	168.90	10.01	22.17	7.01	191.07	9.54
Pharma & Chemical	137.43	8.15	26.17	8.27	163.61	8.17
Paper & Packaging	0.18	0.01	0.06	0.02	0.24	0.01
Service	13.02	0.77	1.95	0.62	14.97	0.75
Leather	7.17	0.42	0.24	0.08	7.41	0.37
Ceramic	50.86	3.02	5.39	1.70	56.25	2.81
Cement	53.67	3.18	12.22	3.86	65.89	3.29
Information Technology	11.36	0.67	3.01	0.95	14.38	0.72
General Insurance	73.45	4.35	5.73	1.81	79.18	3.95
Life Insurance	29.20	1.73	2.29	0.72	31.49	1.57
Telecom	102.72	6.09	25.17	7.95	127.89	6.38
Travel & Leisure	50.14	2.97	21.16	6.99	71.30	3.56
Miscellaneous	103.56	6.14	33.25	10.51	136.81	6.83
Debtenture	5.98	0.35	0.02	0.01	6.00	0.30

Sectoral P/E & EPS

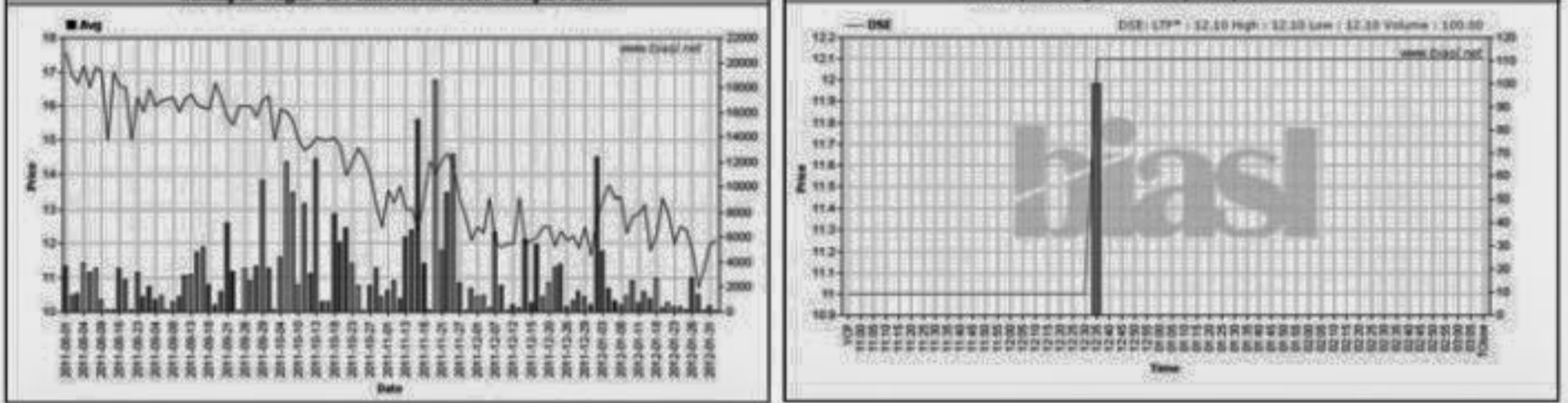
Sector	P/E		EPS(%)	
	DSE	CSE	DSE	CSE
Bank	7.30	7.26	46.22	46.22
NBFI	11.62	12.76	54.53	55.10
Investment	5.64	5.93	16.80	16.80
Engineering	17.87	18.43	42.94	40.83
Food & Allied	13.39	13.04	126.72	128.70
Fuel & Power	10.99	10.99	61.87	61.87
Textile	10.61	10.22	22.14	22.03
Pharma & Chemical	18.89	18.67	66.49	56.96
Paper & Printing	20.12	22.43	12.41	13.27
Service	6.67	6.81	65.49	65.49
Leather	11.95	13.89	104.33	129.27
Ceramic	21.05	21.02	21.98	21.98
Cement	12.93	13.33	67.36	67.36
IT	16.35	16.20	12.37	12.37
General Insurance	13.03	13.16	37.57	38.24
Life Insurance	15.86	16.81	95.84	95.84
Telecom	19.36	19.28	79.30	79.30
Travel & Leisure	17.86	25.82	9.85	7.10
Miscellaneous	4.64	4.63	135.63	131.73
Stock Exchanges	10.42	10.42	48.63	48.32

All the above PE and EPS are estimated to get a relative idea only and not calculated by any of the stock exchanges.

Prepared exclusively for Daily Star by Business Information Automation Service Line (BIASL), on the basis of information collected from daily stock quotations and audited reports of the listed companies. High level of caution has been taken to collect and present the above information and data. The publisher will not take any responsibility if any body uses this information and data for his/her investment decision. For any query please email to biasl@bol-online.com or call 01552153562 or go to www.biasl.net

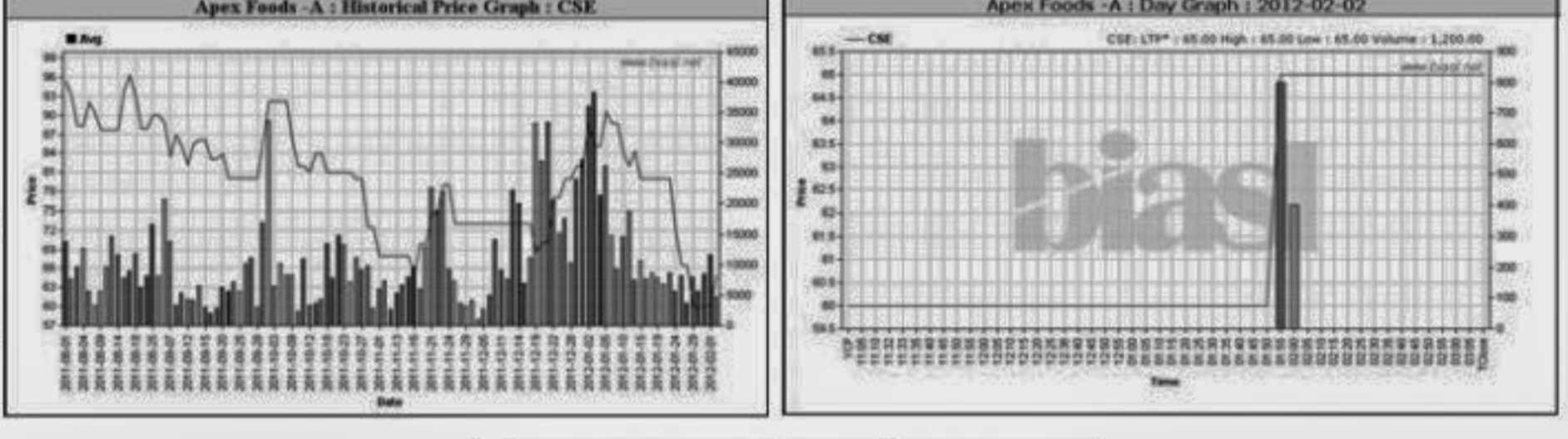
Capital Gainers

Dhaka Stock Exchange													
Company	Price Chn. (%)		Price Scale				Turnover		BookV				
	Close	Avg.	Avg.	Close	DayHi	DayLo	Yr Hi	YrLo	M.Tk	Per S	EPS	PE	
Shampur Sugar-Z	10.00	0.83	12.10	12.10	12.10	12.10	21.8	10.7	0.001	-638.4	-31.34	-0.39	
Brac B.C. Bond-A	5.95	5.26	1,000.00	1,006.50	1,010.00	1,000.00	1130.0	901.5	0.045	0	0	-	
Imam Bulton-Z	5.19	4.31	14.29	14.20	14.80	13.20	57.9	13.2	0.050	7.35	-1.74	-8.21	
Prime Insur-A	3.94	1.23	44.38	44.80	45.00	42.10	151.0	39.0	1.631	12.33	3.11	14.27	
R. N. Spinning-A	3.72	4.99	33.69	33.50	34.50	32.00	118.0	30.3	36.166	12.38	3.88	8.68	
The Ibn SinaA	3.24	5.04	107.75	105.10	111.50	100.00	187.9	100.0	0.765	19.9	4.64	23.22	
Monno Stafflers-A	3.07	2.43	220.00	221.30	228.00	218.00	360.0	131.5	0.033	39.65	3.91	56.27	
MBL 1st M.F.-A	2.63	2.63	7.80	7.80	7.80	7.80	11.0	7.1	0.004	0	0	-	
Standard Ceramic-B	2.36	2.35	34.80	34.70	35.70	32.50	67.4	24.7	0.174	14.9	0.62	56.13	
Karnaphuli Insur-A	2.14	(2.60)	43.01	42.90	44.50	41.20	93.9	36.2	3.823	20.68	3.98	10.81	



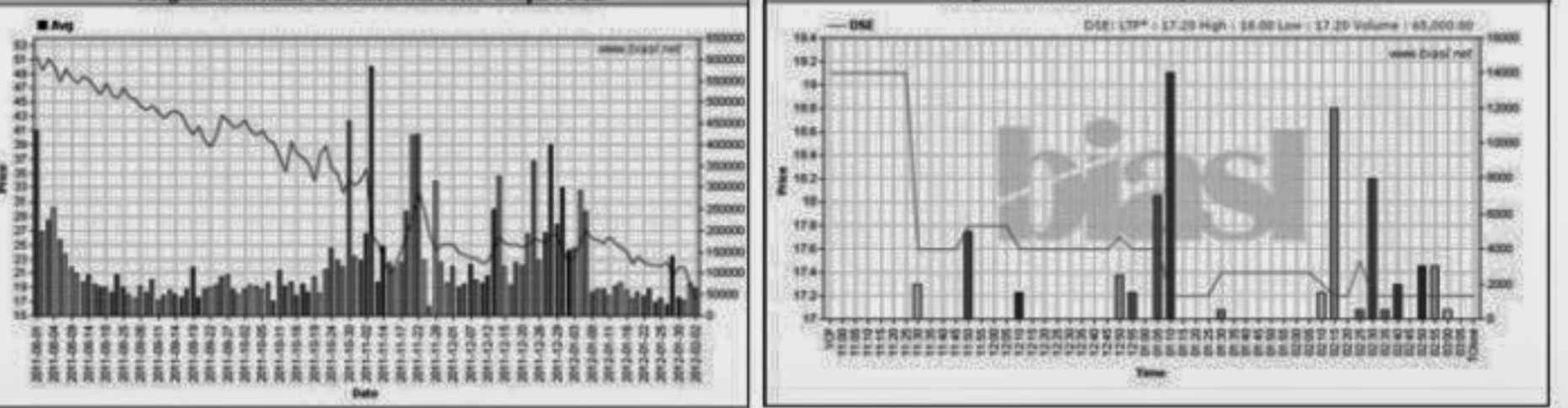
Chittagong Stock Exchange

Company	Vol.	Value	% of Total	Big Lot	Avg. Close	DayHi	DayLo	Chn%	Per S	EPS	PE	
Apex Foods -A	8.33	8.33	65.00	65.00	65.00	65.00	73.1	73.1	0.078	69.7	1.89	34.39
Square Textile -A	4.18	5.14	91.78	92.20	93.50	90.00	196.3	86.0	0.266	44.24	5.8	15.82
Phoenix Finance-A	4.13	3.15	58.00	58.00	58.00	58.00	197.7	55.7	0.029	22.68	3.38	17.16
R. N. Spinning-A	4.04	5.29	33.61	33.50	34.90	32.00	118.0	30.5	4.697	12.38	3.88	8.66
H.R. Textile -A	3.94	3.74	35.20	34.30	36.30	34.00	35.9	35.9	0.150	14.83	2.61	13.49
Key & Que (BD) -B	3.38	2.27	54.86	55.00	57.30	53.10	42.3	42.3	0.478	10.52	0.45	121.91
ACI ZERO Bond-A	3.35	3.36	802.33	802.50	814.00	800.00	850.0	711.0	0.019	1000	0	-
ICB AMCL3rd NRB MF-A	3.17	2.05	6.47	6.50	6.60	6.40	12.4	6.3	0.010	11.17	1.17	5.53
Daffodil Computers -A	2.92	0.29	17.41	17.60	17.90	16.90	34.3	16.9	1.125	11.02	0.94	18.52
Mercantile Insur -A	1.59	0.76	31.92	31.90	32.90	31.00	40.9	40.9	0.555	14.35	1.85	17.25



Capital Losers

Dhaka Stock Exchange													
Company	Price Chn. (%)		Price Scale				Turnover		BookV				
	Close	Avg.	Avg.	Close	DayHi	DayLo	Yr Hi	YrLo	M.Tk	Per S	EPS	PE	
Meghna Con. Milk-B	-9.95	-9.80	17.40	17.20	18.00	17.20	66.0	17.2	1.131	-9.34	-4.43	-3.93	
Reliance1 M.F.-A	-9.09	-9.09	9.00	9.00	9.00	9.00	15.0	8.0	0.009	0	0	-	
Al-Haj Textile -A	-9.01	-7.02	33.23	32.30	36.20	32.10	76.3	32.1	1.626	29.68	3.02	11.00	
Anwar Galvanizing-Z	-8.72	-5.31	20.70	19.90	22.40	19.70	45.3	16.6	0.797	7.57	0.52	39.81	
Marico BD Ltd-A	-8.50	-9.32	349.57	348.70	357.00	347.80	665.0	328.0	1.643	76.18	11.34	30.83	
Zeal Bangla Sugar-Z	-8.18	-5.98	10.38	10.10	11.00	10.10	27.9	10.1	0.163	-132.27	-17.65	-0.59	
Jute SpinnersA	-7.87	-8.98	109.23	108.90	121.00	106.40	225.0	99.6	0.071	56.59	4.87	22.43	
Quasem Drycells -A	-7.62	-5.74	39.61	37.60	42.00	37.10	130.0	37.1	9.023	76.6	2.05	19.32	
GeminiSeaFoodA	-7.23	-7.23	184.44	184.70	190.00	182.00	405.0	144.1	0.166	0.3	9.48	19.46	
Salvo Chemicals-Z	-6.72	-1.40	25.28	23.60	27.20	23.00	78.5	23.0	3.211	11.48	1.36	18.59	



Chittagong Stock Exchange

Company	Vol.	Value	% of
---------	------	-------	------