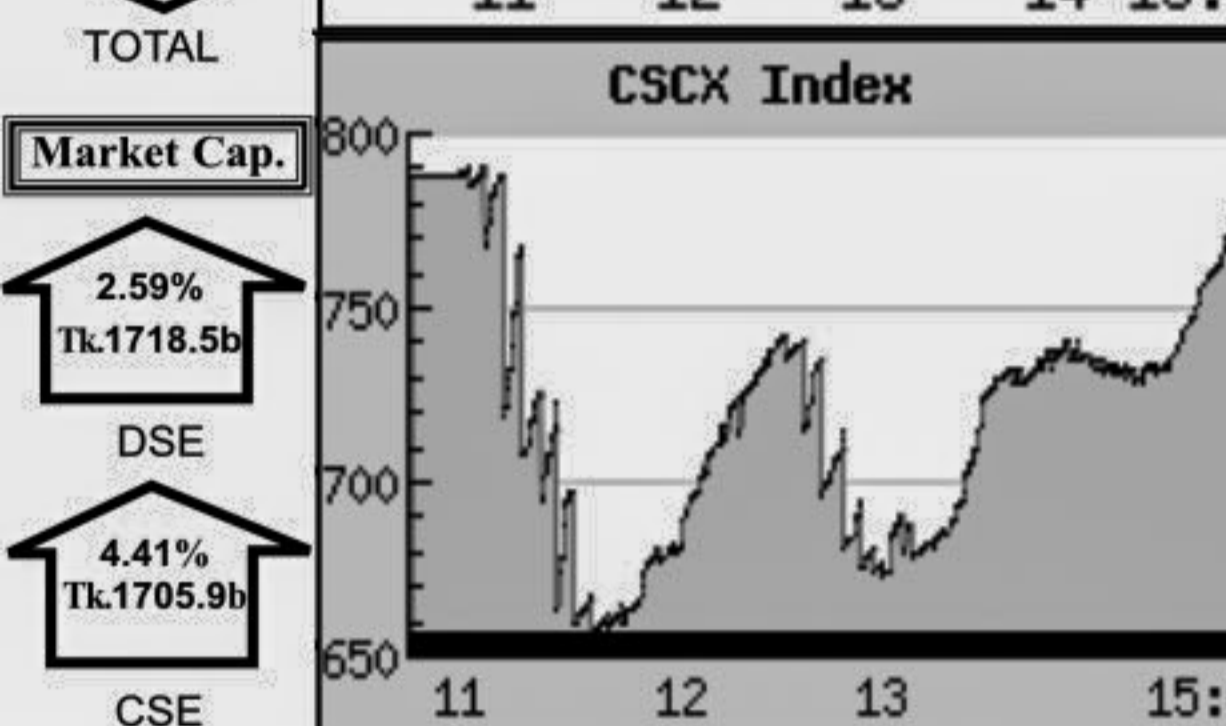
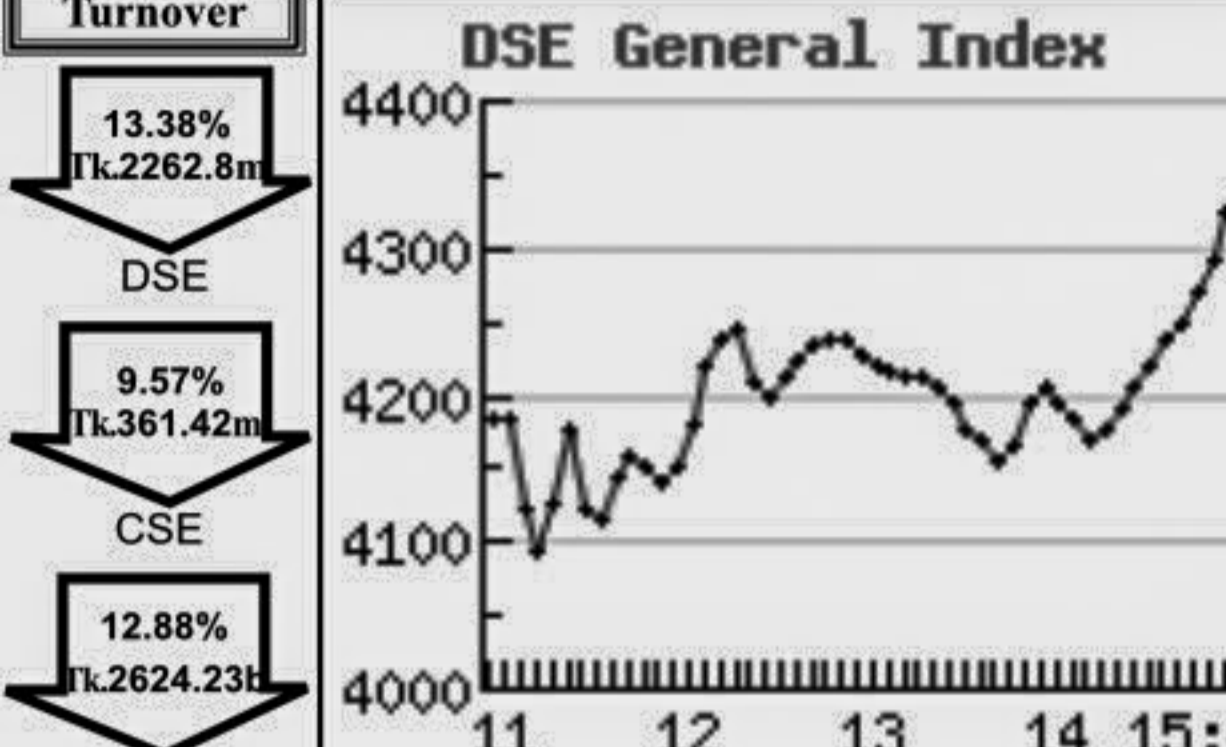


Capital Market Highlights: January 30, 2012

INDEX table showing DSE All Share (+2.41%), DSE General (+2.46%), DSE 20 (+2.41%), CSE All Share (+2.68%), CSE CSCX (+2.72%), CSE 30 (+2.64%)

Turnover table showing DSE (13.38% Tk.2262.8m), CSE (9.57% Tk.361.42m), TOTAL (12.88% Tk.2624.23m), Market Cap. (2.59% Tk.1718.5b), DSE (4.41% Tk.1705.9b), CSE



Key Features - January 30, 2012

Table with 4 columns: Indicators, DSE, CSE, TOTAL. Rows include Turnover (Million Taka), Turnover (Volume), No. of Contract, Traded Issues, Issue Gain (Avg. Price Basis), Issue Loss (Avg. Price Basis), Unchanged Issue (Avg. Price Basis), Market Cap. Equity (Billion Tk.), Market Cap. Equity (Billion US\$)

Combined Turnover Leaders

Table with 5 columns: Company, Volume (Share), Value (M. Taka), % of Total, Average Price. Lists top performing stocks like Grameenphone-A, R. N. Spinning-A, etc.

Sectoral Turnover Summary

Table with 5 columns: Sector, DSE (Mill. Tk.), CSE (Mill. Tk.), Total (Mill. Tk.), % Total. Lists sectors like Bank, NBFI, Investment, etc.

Sectoral P/E & EPS

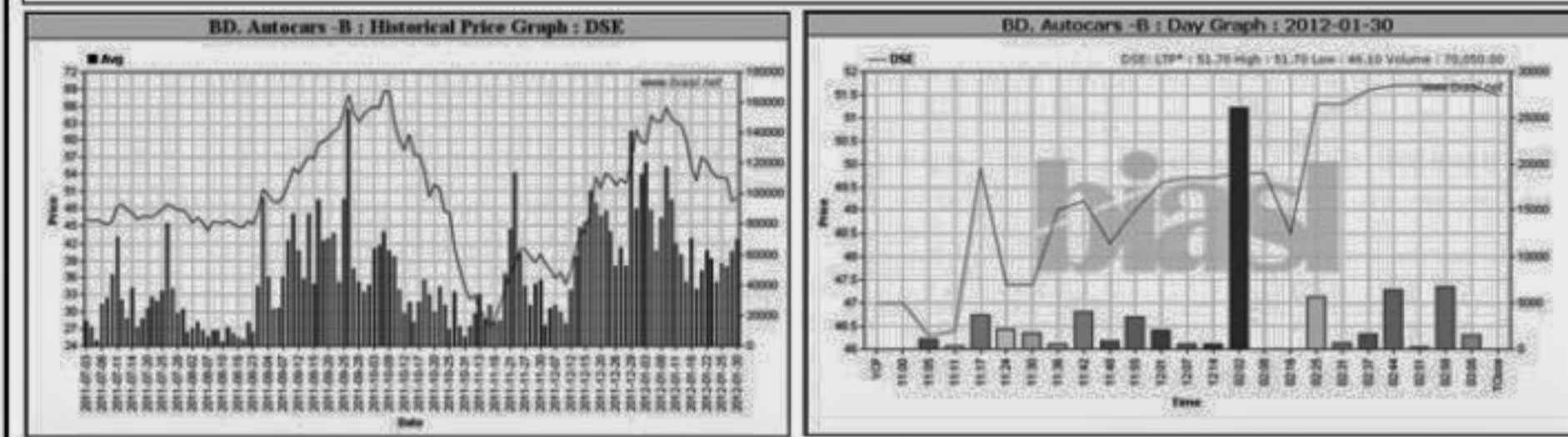
Table with 5 columns: Sector, P/E (DSE, CSE), EPS (%) (DSE, CSE). Lists sectors like Bank, NBFI, Investment, etc.

All the above PE and EPS are estimated to get a relative idea only and not calculated by any of the stock exchanges.

Prepared exclusively for Daily Star by Business Information Automation Service Line (BIASL) on the basis of information collected from daily stock quotations and audited reports of the listed companies.

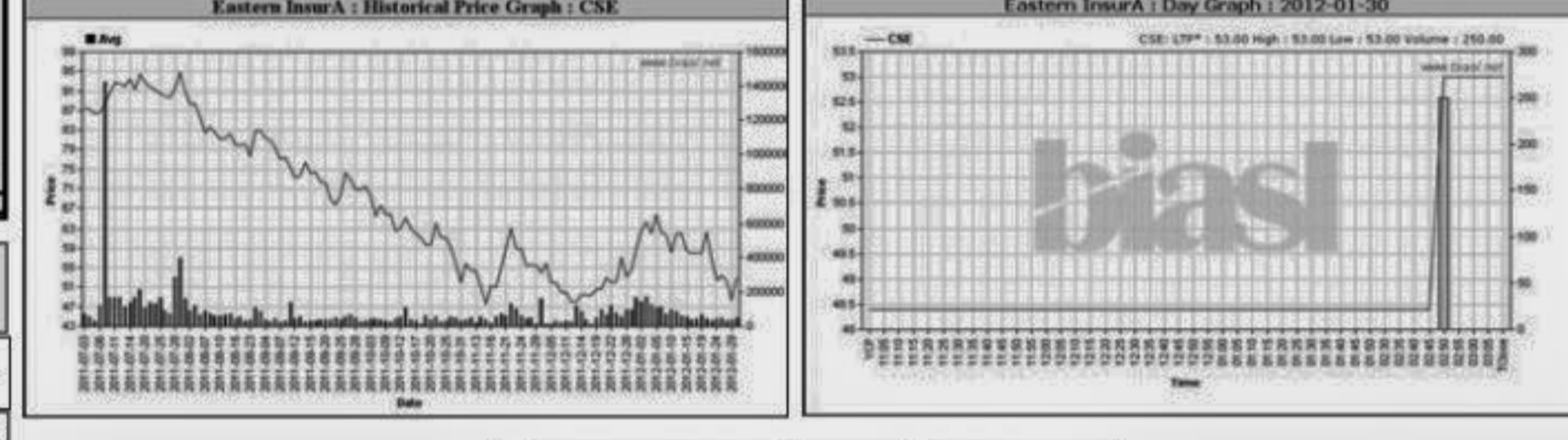
Capital Gainers

Dhaka Stock Exchange table listing top gainers like BD. Autocars-B, Purabi G Insu.A, Northern Jute-Z, etc.



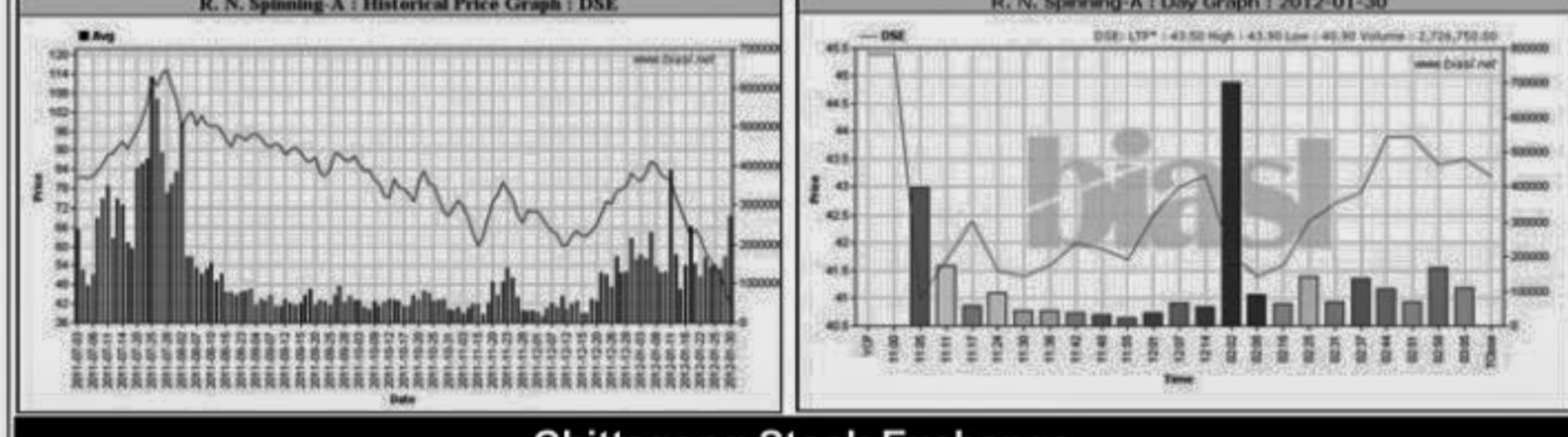
Chittagong Stock Exchange

Table listing top gainers at Chittagong Stock Exchange like Eastland Insur-A, Eastern InsurA, Hakkani P& Paper-B, etc.



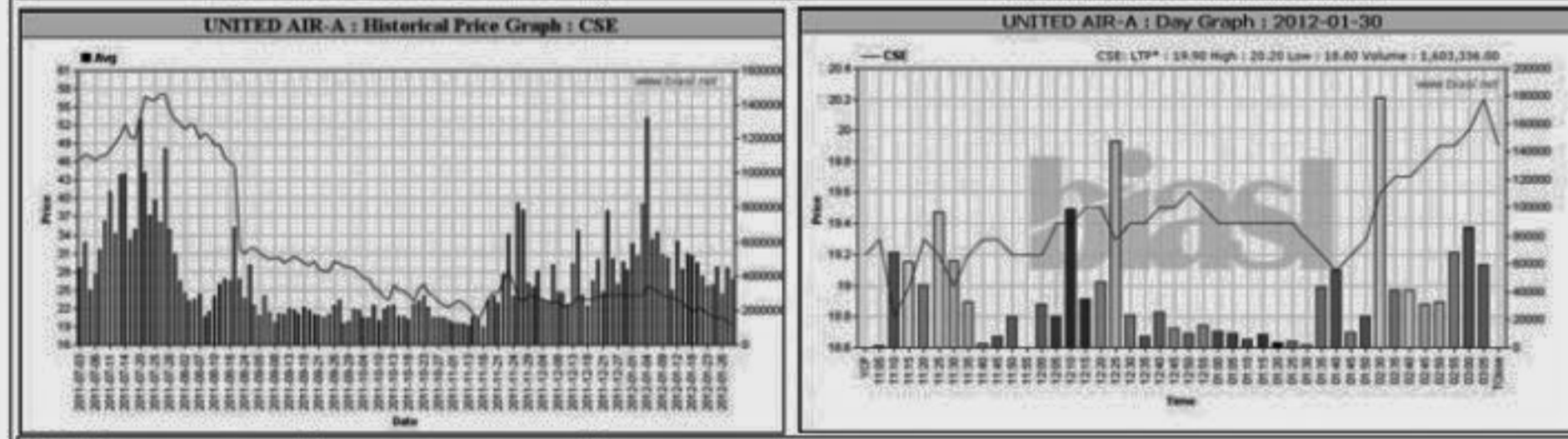
Turnover Leaders

Dhaka Stock Exchange table listing top turnover leaders like R. N. Spinning-A, Grameenphone-A, UNITED AIR-A, etc.



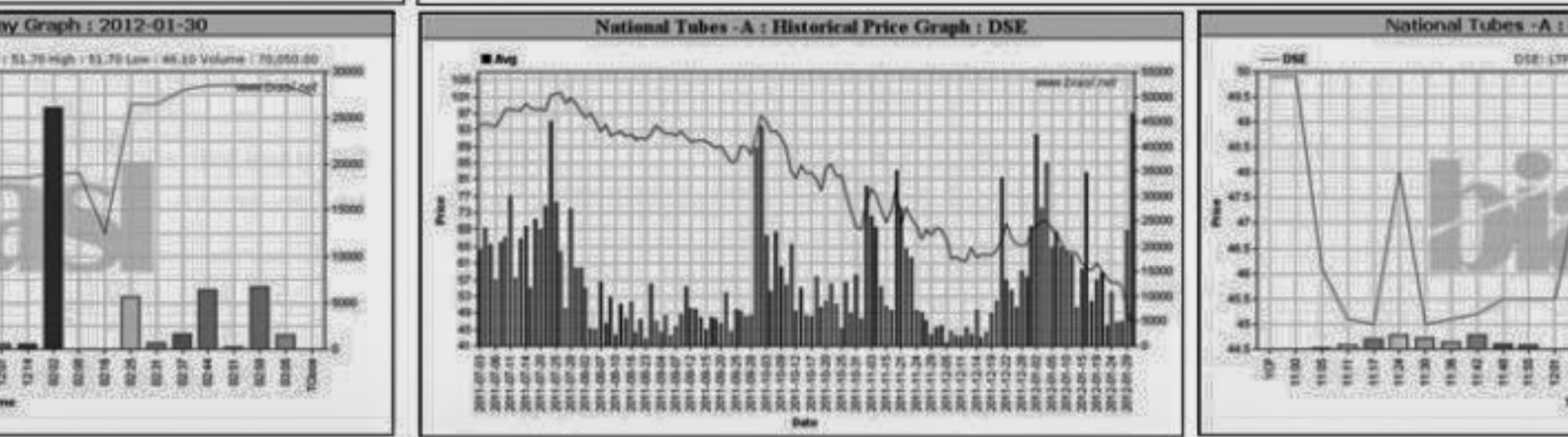
Chittagong Stock Exchange

Table listing top turnover leaders at Chittagong Stock Exchange like Grameenphone-A, ICB - A, National Bank - A, etc.



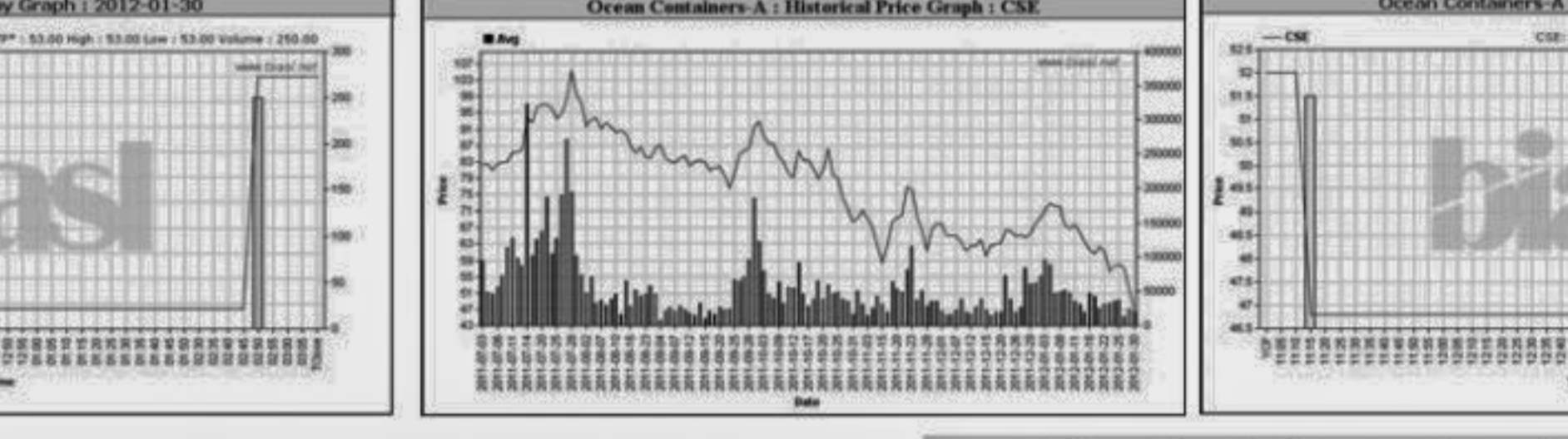
Capital Losers

Dhaka Stock Exchange table listing top losers like National Tubes-A, Atlas BD-A, 1st BSRS M-F-A, etc.



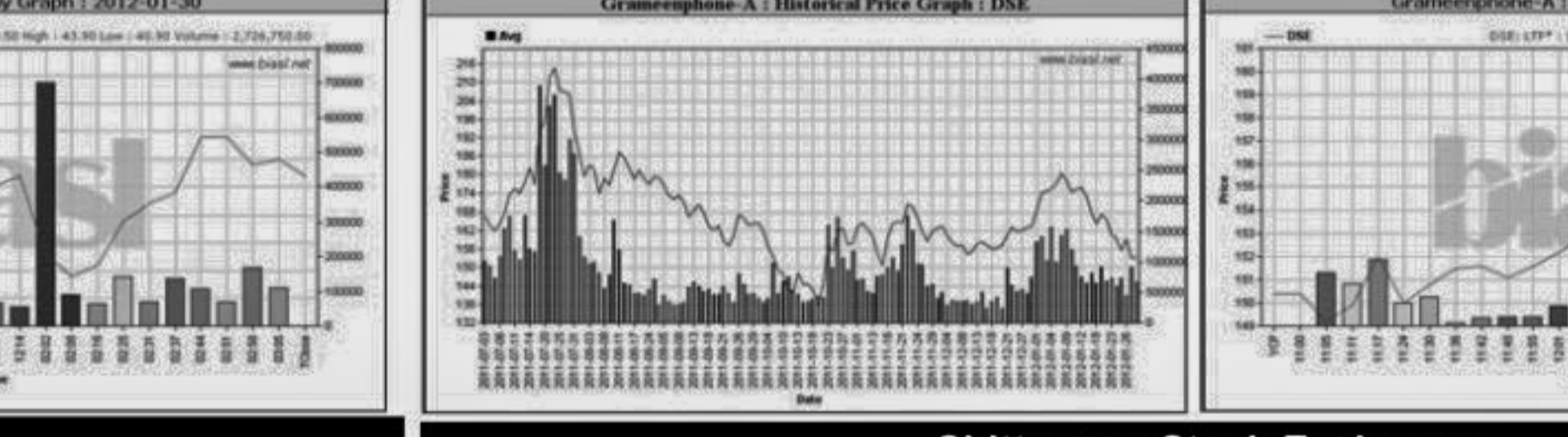
Chittagong Stock Exchange

Table listing top losers at Chittagong Stock Exchange like Ocean Containers-A, AramitCementA, Usmania Glass -A, etc.



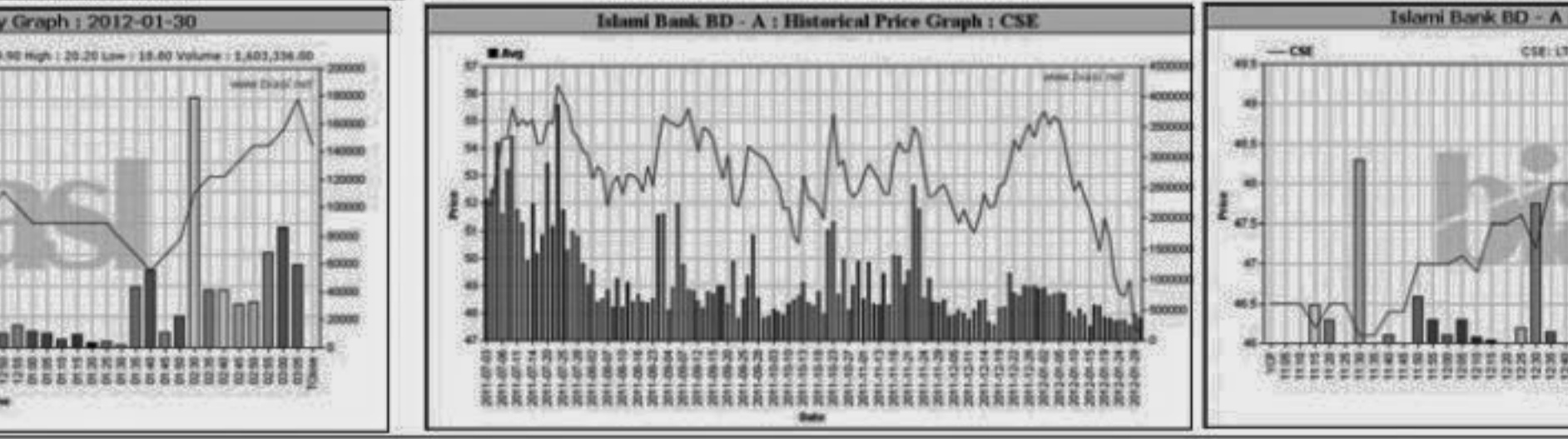
Market Cap. Leader

Dhaka Stock Exchange table listing market cap leaders like Grameenphone-A, Square Pharma -A, National Bank - A, etc.



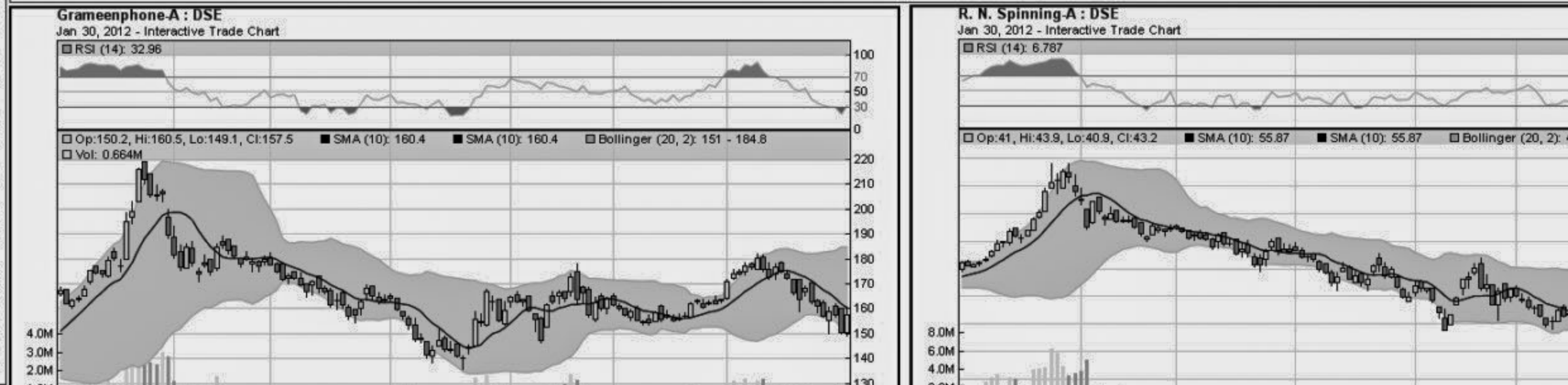
Chittagong Stock Exchange

Table listing market cap leaders at Chittagong Stock Exchange like Grameenphone-A, ICB - A, National Bank - A, etc.



When to buy or sell

Investors follow many calculations of corporate performance when deciding if a stock is undervalued or overvalued. These range from the simple price-earnings ratio, or P/E, to far more technical ways of attempting to discern whether a stock is trending up or down. Here are some of the most common.



Notes: Capital Gainer / Loser tables are prepared on the basis of the close price change of the traded issues. "Close" or "C.Price" or "D Clo." is the Closing Price of the day. "Chn %" indicates the price difference in percentage. "Avg" prices indicate weighted average prices of all transactions of the day. "DayHi"/"D HI" and "DayLo"/"D Lo" indicate the highest and lowest transacted price of the day.