

Capital Market Highlights: January 16, 2012

INDEX

DSE
All Share: 4069.52681 (-3.27%)
DSE General: 4864.30104 (-3.33%)
DSE 20: 3686.22287 (-2.16%)

CSE
All Share: 14029.1832 (-2.33%)
CSE CSCX: 8993.4926 (-2.56%)
CSE 30: 12849.8250 (-2.84%)

Turnover

DSE: 28.61% Tk.3183.3m
CSE: 33.75% Tk.422.29m
TOTAL: 27.20% Tk.3543.77m

Market Cap.

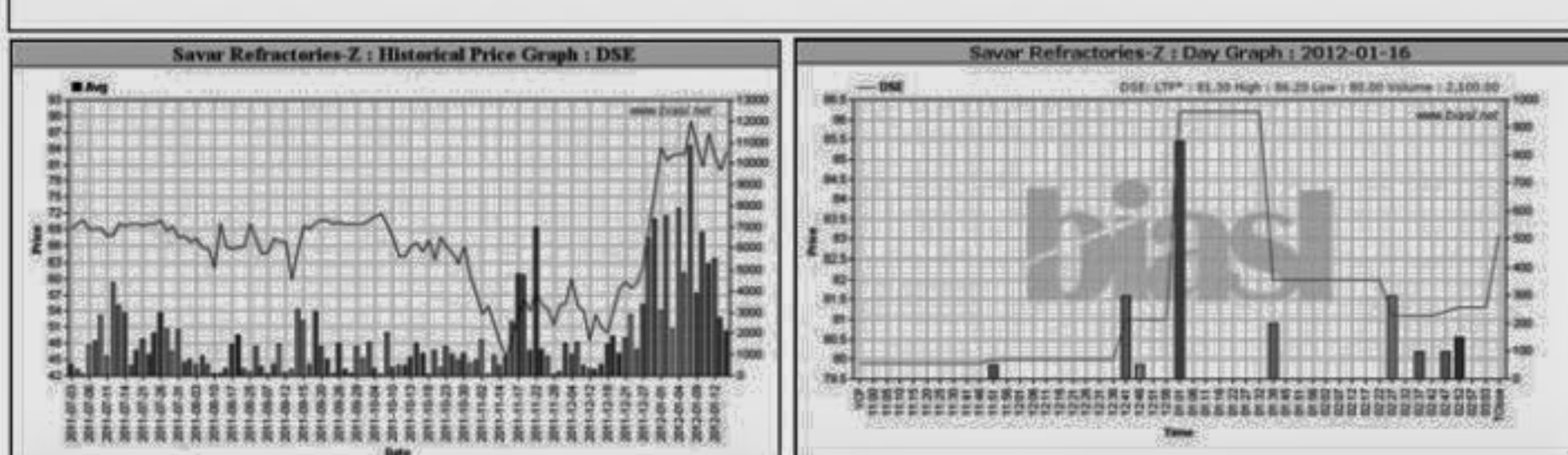
DSE: 3.26% Tk.1924.6b
CSE: 2.54% Tk.1867.1b

DSE General Index

CSCX Index

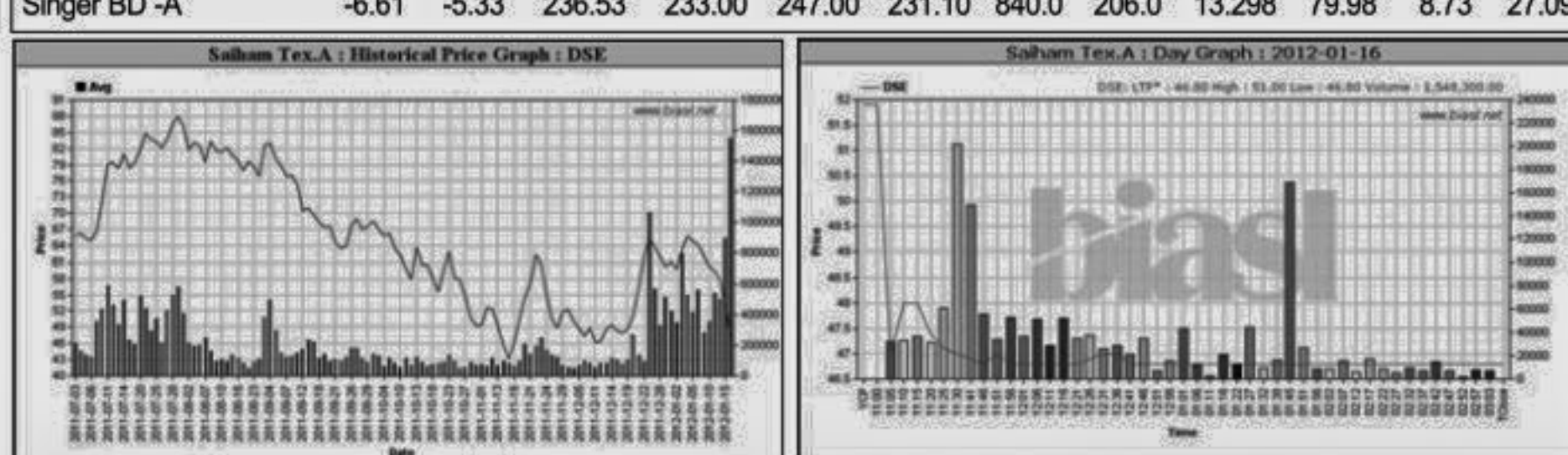
Capital Gainers

Company	Price Chn. (%)		Price Scale				Turnover		BookV			
	Close	Avg.	Avg.	Close	DayHi	DayLo	Yr Hi	Yr Lo	M.Tk	Per S	EPS	PE
Northern Jute-Z	8.89	11.11	30.00	29.40	29.70	29.30	50.4	17.0	0.024	8.6	-8.19	-3.66
Savar Refractories-Z	4.01	4.16	83.33	83.10	86.20	80.00	100.0	41.1	0.175	11.59	1.17	71.22



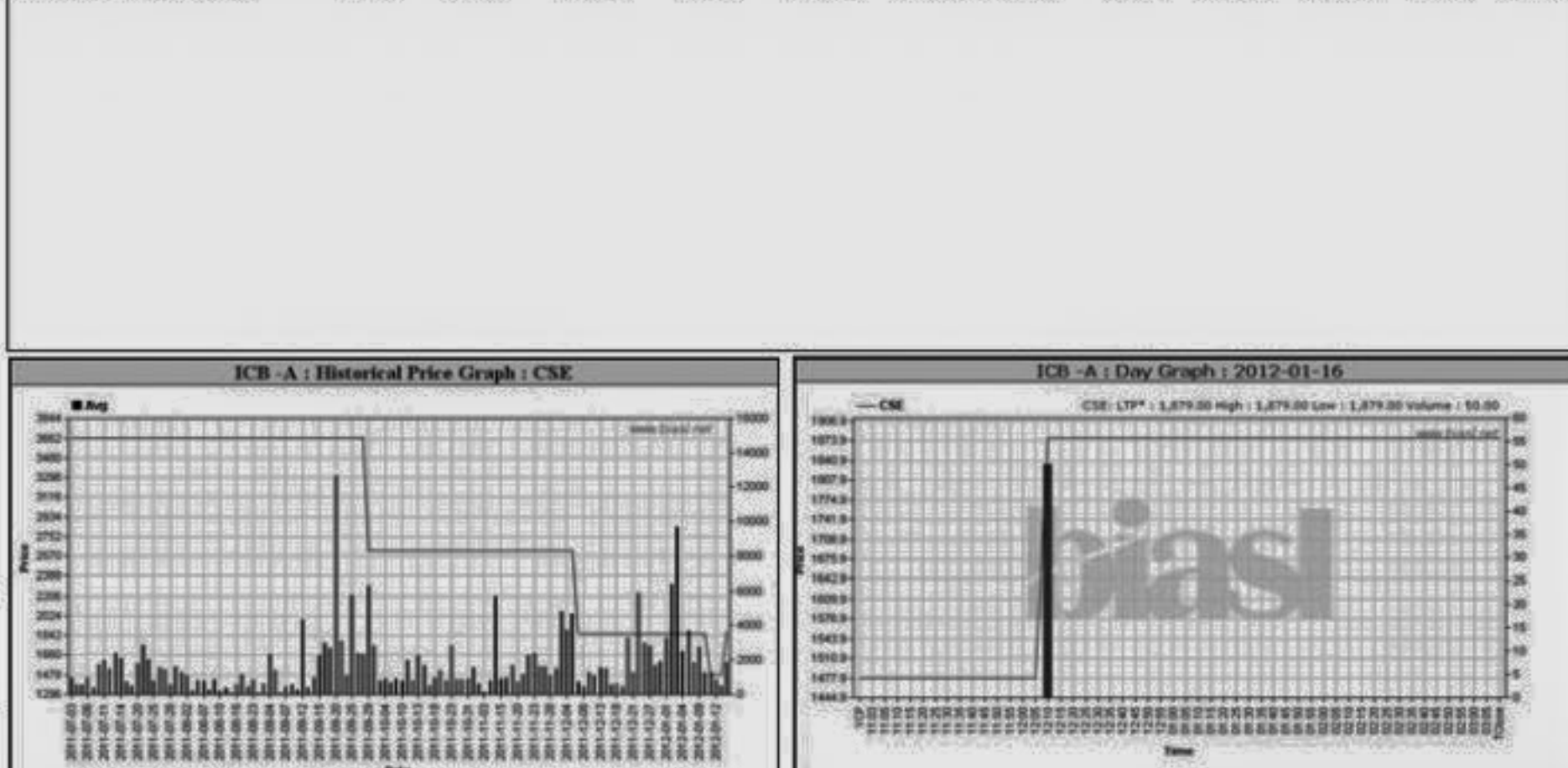
Capital Losers

Company	Price Chn. (%)		Price Scale				Turnover		BookV			
	Close	Avg.	Avg.	Close	DayHi	DayLo	Yr Hi	Yr Lo	M.Tk	Per S	EPS	PE
Saiham Tex.A	-9.83	-11.26	46.90	46.80	51.00	46.80	148.5	41.1	72.623	12.24	3.31	14.17
5th ICB M F-A	-8.24	-8.24	155.90	155.90	206.4	151.1	0.016	41.95	18.93	8.24		



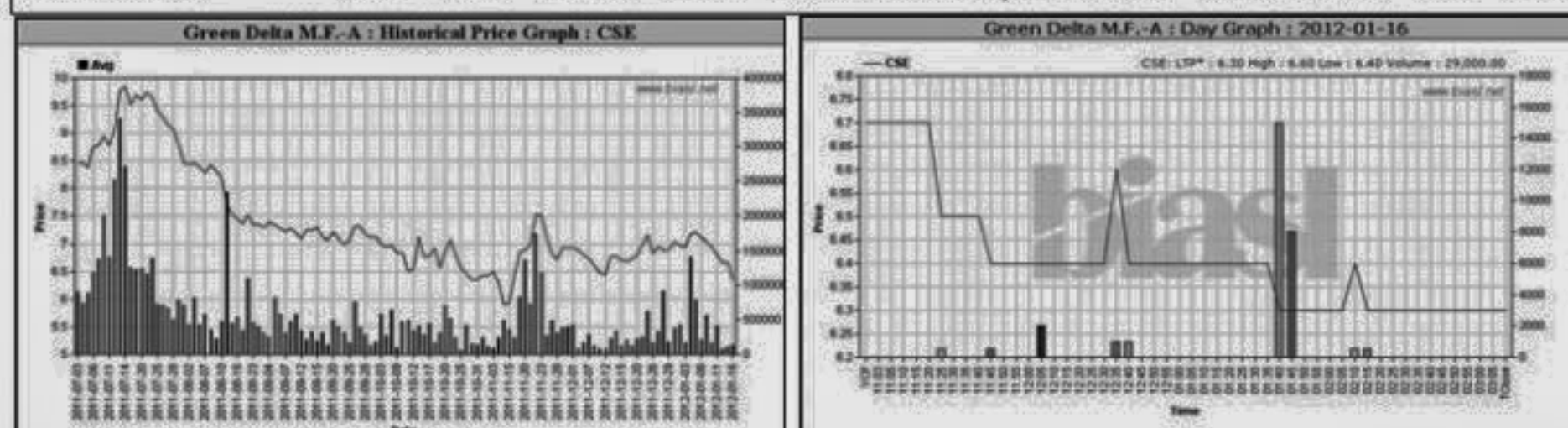
Chittagong Stock Exchange

Company	Price Chn. (%)	Close	Avg.	DayHi	DayLo	Yr Hi	Yr Lo	M.Tk	Per S	EPS	PE
ICB -A	27.13	27.13	1879.00	1879.00	1879.00	4218.0	850.0	0.094	753.05	114.23	16.45



Chittagong Stock Exchange

Company	Price Chn. (%)	Close	Avg.	DayHi	DayLo	Yr Hi	Yr Lo	M.Tk	Per S	EPS	PE	
Green Delta M.F.-A	-14.29	-4.94	6.35	6.00	7.00	6.00	12.0	5.0	0.184	9.48	-0.52	-12.21



Key Features - January 16, 2012

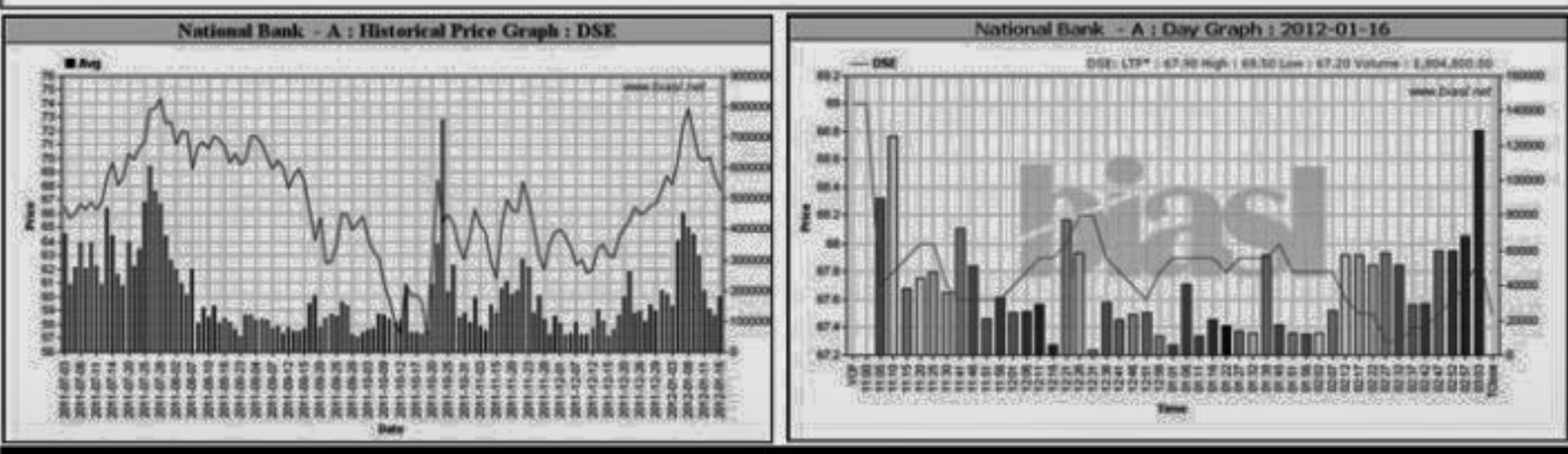
Indicators	DSE	CSE	TOTAL
Turnover (Million Taka)	3,183.31	422.29	3,605.60
Turnover (Volume)	68,726,492	10,127,770	78,854,262
No. of Contract	102,409	16,937	119,346
Traded Issues	257	185	257
Issue Gain (Avg. Price Basis)	5	9	5
Issue Loss (Avg. Price Basis)	251	176	251
Unchanged Issue (Avg. Price Basis)	1	-	1
Market Cap. Equity (Billion Tk.)	1,924.62	1,867.14	1,924.62
Market Cap. Equity (Billion US\$)	24.83	24.09	24.83

Combined Turnover Leaders

Company	Volume (Share)	Value (M. Taka)	% of Total	Average Price
UNITED AIR-A	7920137	175.10	4.86	22.11
Grameenphone-A	990400	166.34	4.61	167.95
National Bank -A	2017923	136.57	3.79	67.68

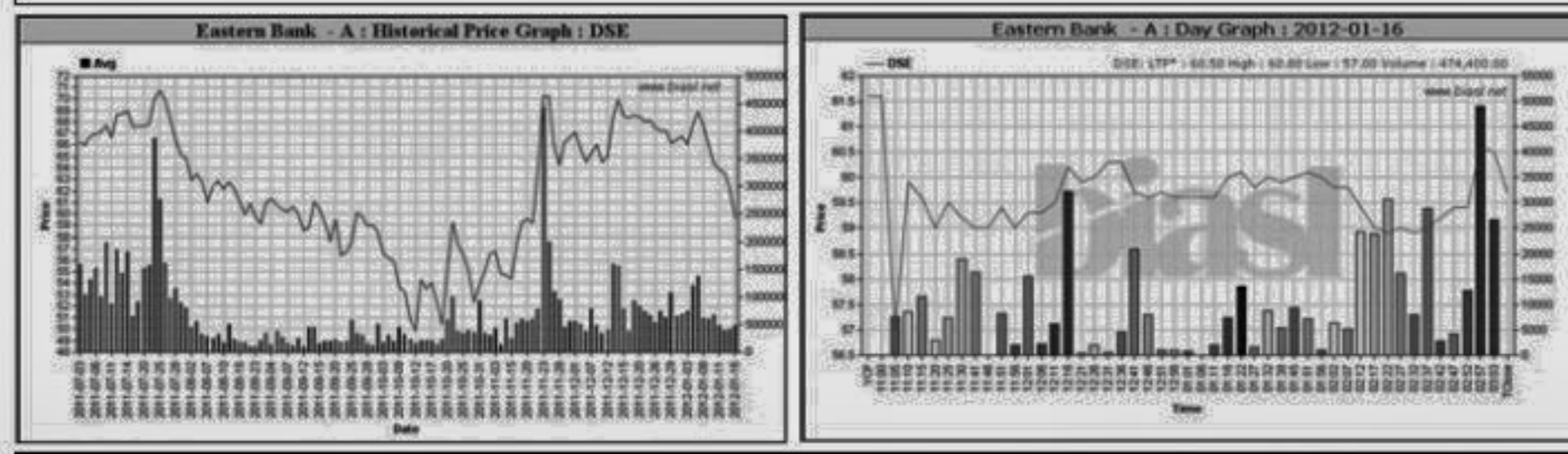
Turnover Leaders

Company	Vol. Share	Value (M.Tk.)	% of Total	Big Lot	Price Scale				C.Pite BookV			
					Avg.	Close	DayHi	DayLo	Chn%	Per S	EPS	PE
Grameenphone-A	823000	138,209	4.34	-	167.93	166.50	171.90	165.70	-3.37	27.07	7.93	21.18



Market Cap. Leader

Company	Market Cap. M. Tk.	% of Total	Average				Price Scale				BookV			
			Price	Chn.	P Day	D Hi	D Lo	D Clo.	Chn%	Per S	EPS	PE		
Grameenphone-A	226,756	11.78	167.93	-2.84	172.83	171.9	165.7	166.5	-3.37	27.07	7.93	21.18		

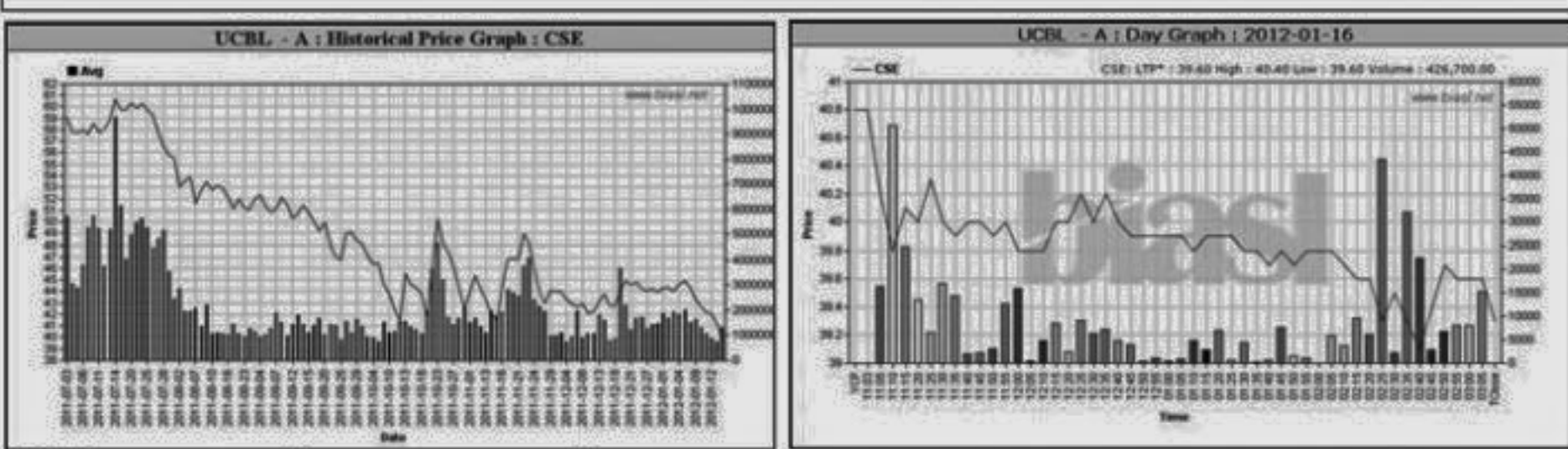


Sectoral Turnover Summary

Sector	DSE		CSE		Total	
	Mill. (Tk.)	%	Mill. Tk.	%	Mill. Tk.	%
Bank	760.06	23.88	111.34	30.89	871.40	24.59
NBFI	248.75	7.81	21.87	6.07	270.61	7.64
Investment	84.09	2.64	5.53	1.53	89.61	2.53

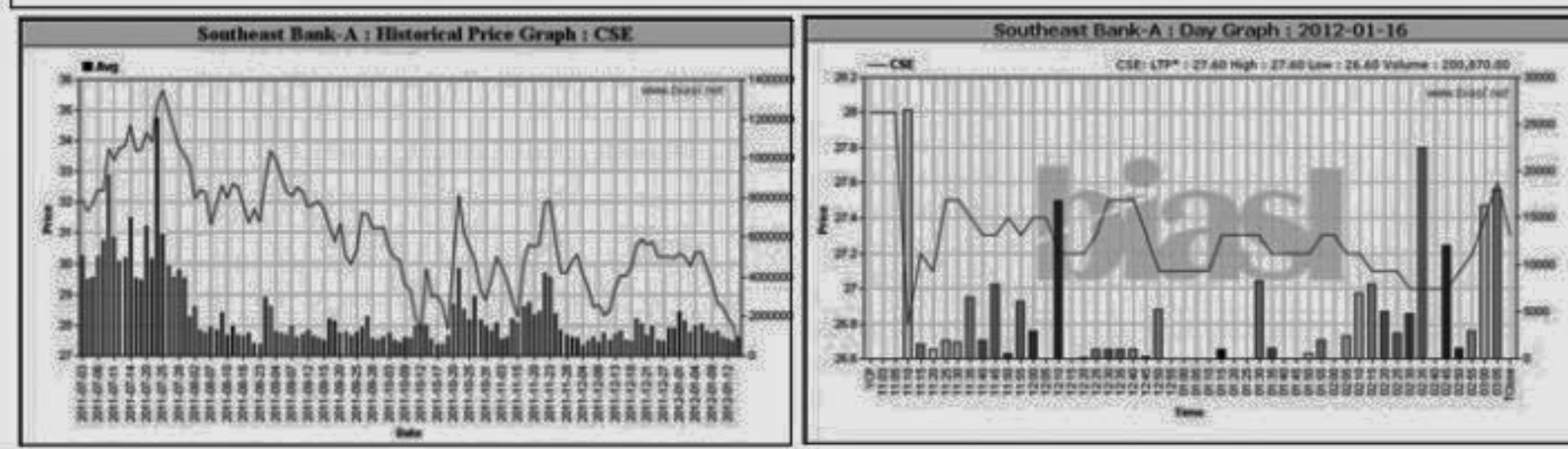
Chittagong Stock Exchange

Company	Vol. Share	Value (M.Tk.)	% of Total	Big Lot	Avg.	Close	DayHi	DayLo	Chn%	Per S	EPS	PE
UNITED AIR-A	2564932	56,766	13.44	49100	22.13	22.00	22.80	21.50	-4.35	12.64	0.71	31.17



Chittagong Stock Exchange

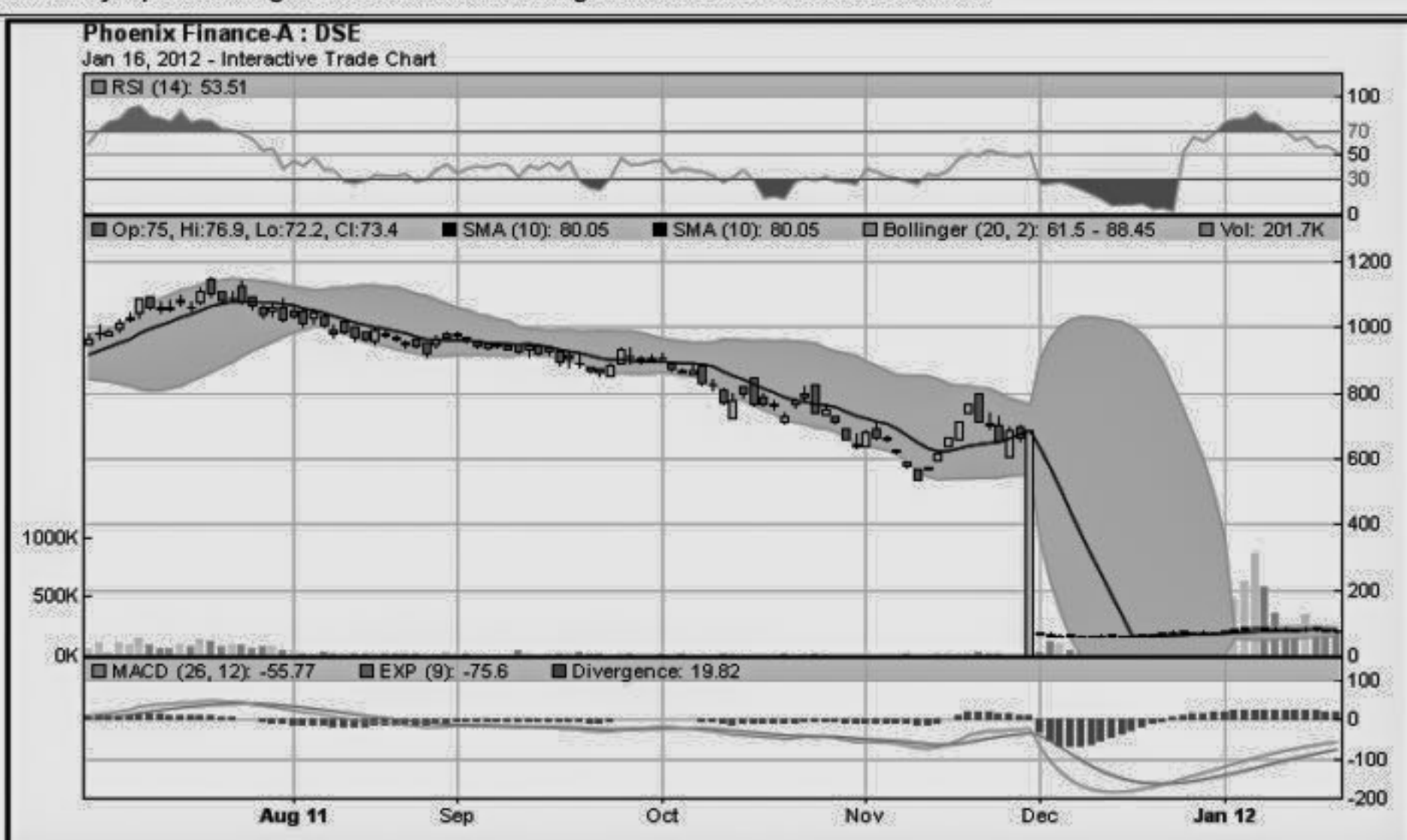
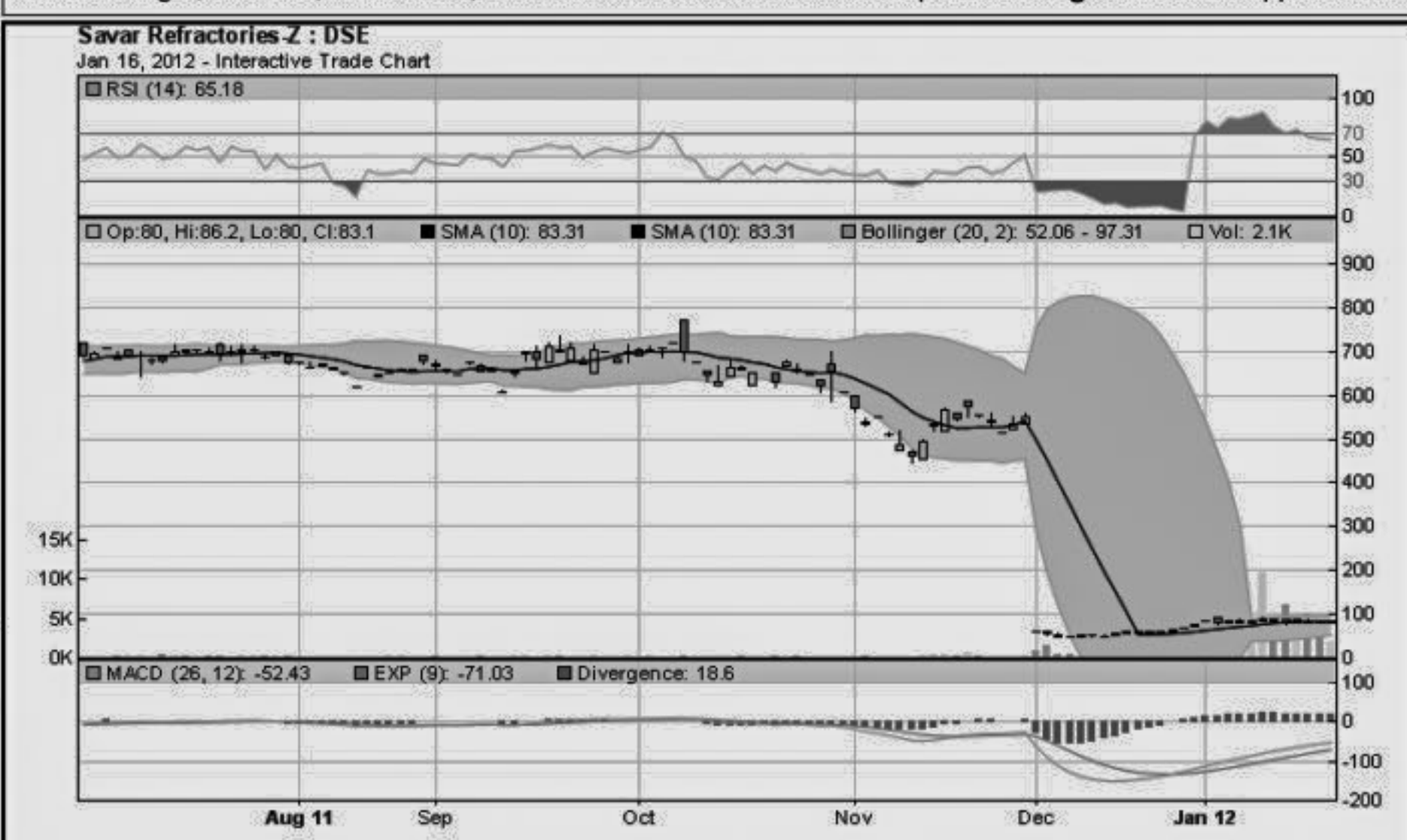
Company	Market Cap. M. Tk.	% of Total	Average Price	Chn.	P Day	D Hi	D Lo	D Clo.	Chn%	Per S	EPS	PE
Grameenphone-A	226,904	12.15	168.04	-2.78	172.84	170	166.2	167	-2.91	27.07	7.93	21.19



When to buy or sell

Investors follow many calculations of corporate performance when deciding if a stock is undervalued or overvalued. These range from the simple price-earnings ratio, or P/E, to far more technical ways of attempting to discern whether a stock is trending up or down. Here are some of the most common.

RSI (Relative Strength Index): A technical momentum indicator that compares the size of recent gains to recent losses, in an attempt to determine overbought and oversold conditions of an asset. Stocks with more or strong gains have a higher RSI than stocks that had more or stronger losses. **SMA (Simple Moving Average):** A simple, or arithmetic, moving average is the average stock price over a certain period of time. It adds up the closing price of the security for a given period and then divides the total by the number of intervals. Short-term averages respond quickly to changes in the price of the stock, so appear less steady, while long-term averages are slow to react. **EMA (Exponential Moving Average):** A type of moving average that is similar to a simple moving average, except that more weight is given to the latest data. The exponential moving average is also known as "exponentially weighted moving average". **Bollinger Band:** A band that provides a relative definition of high and low, it was developed by famous technical trader John Bollinger. By definition, prices are high at the upper band and low at the lower band. The band usually plots two standard deviations away from a simple moving average. Because the standard deviation is a measure of volatility, the bands adjust themselves to market conditions. When the markets become volatile, the bands widen (move further away from the average); during less volatile periods, the bands contract. The closer the prices move to the upper band, the more overbought the market, and the closer the prices move to the lower band, the more oversold the market. **MACD (Moving Average Convergence Divergence):** A trend-following momentum indicator that shows the relationship between two moving averages of prices. It is used to spot changes in the strength, direction, momentum, and duration of a trend in a stock's price. **Divergence:** This happens when a security's price diverges from the MACD. It signals the end of the current trend.



BIAS

Prepared exclusively for Daily Star by Business Information Automated Service Line (BIAS), on the basis of information collected from daily stock quotations and audited reports of the listed companies. High level of caution has been taken to collect and present the above information and data. The publisher will not take any responsibility if any body uses this information and data for his/her investment decision. For any query please email to bias@bol-online.com or call 01552153562 or go to www.bias.net

Notes: Capital Gainer / Loser tables are prepared on the basis of the close price change of the traded issues. "Close" or "C.Price" or "D Clo." is the Closing Price of the day. "Chn %" indicates the price difference in percentage. "Avg" prices indicate weighted average prices of all transactions of the day. "DayHi"/"D Hi" and "DayLo"/"D Lo" indicate the highest and lowest transacted price of the day. "Yr.Hi" and "Yr. Lo" indicate the highest and lowest transacted price last one running year, everyday the range moves by one day. "P Day"=Previous Day. EPS is based on available latest audited accounts of the companies. EPS & Book value per share are diluted at bookclosing date whenever it is applicable. Only the positive earning companies are considered in calculating the PER and EPS of the Sectors and Stock Exchanges.