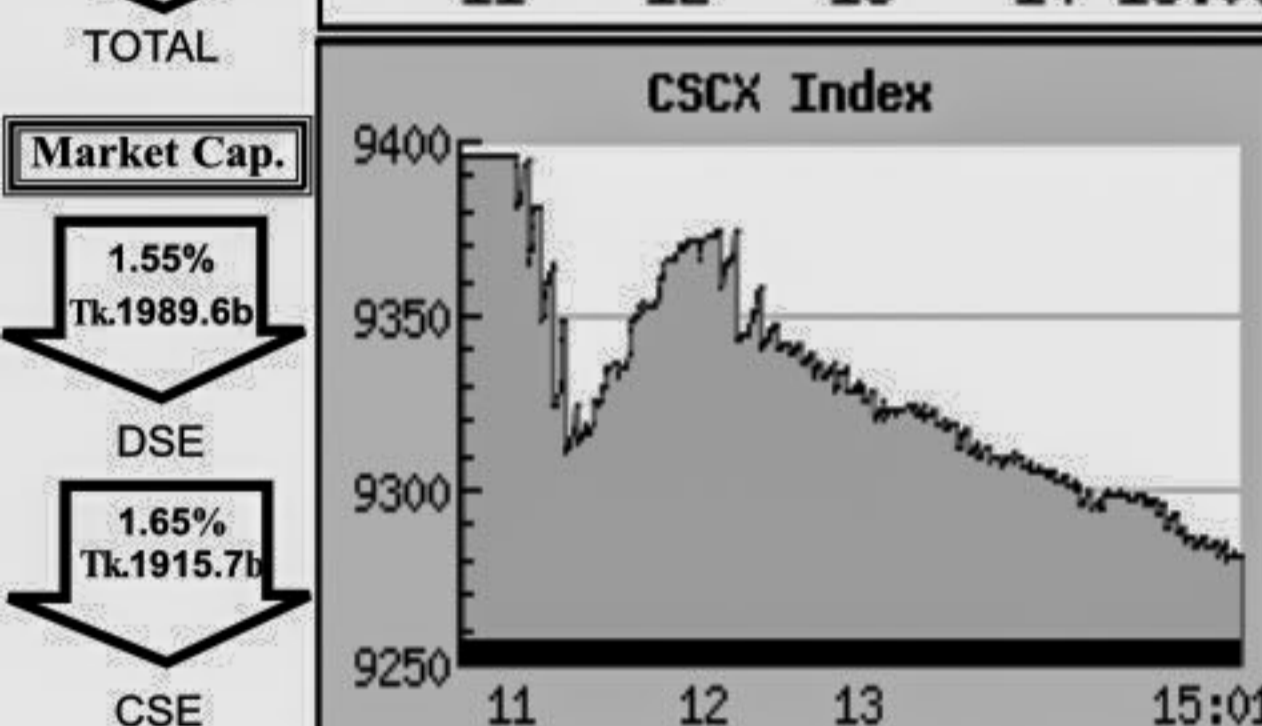
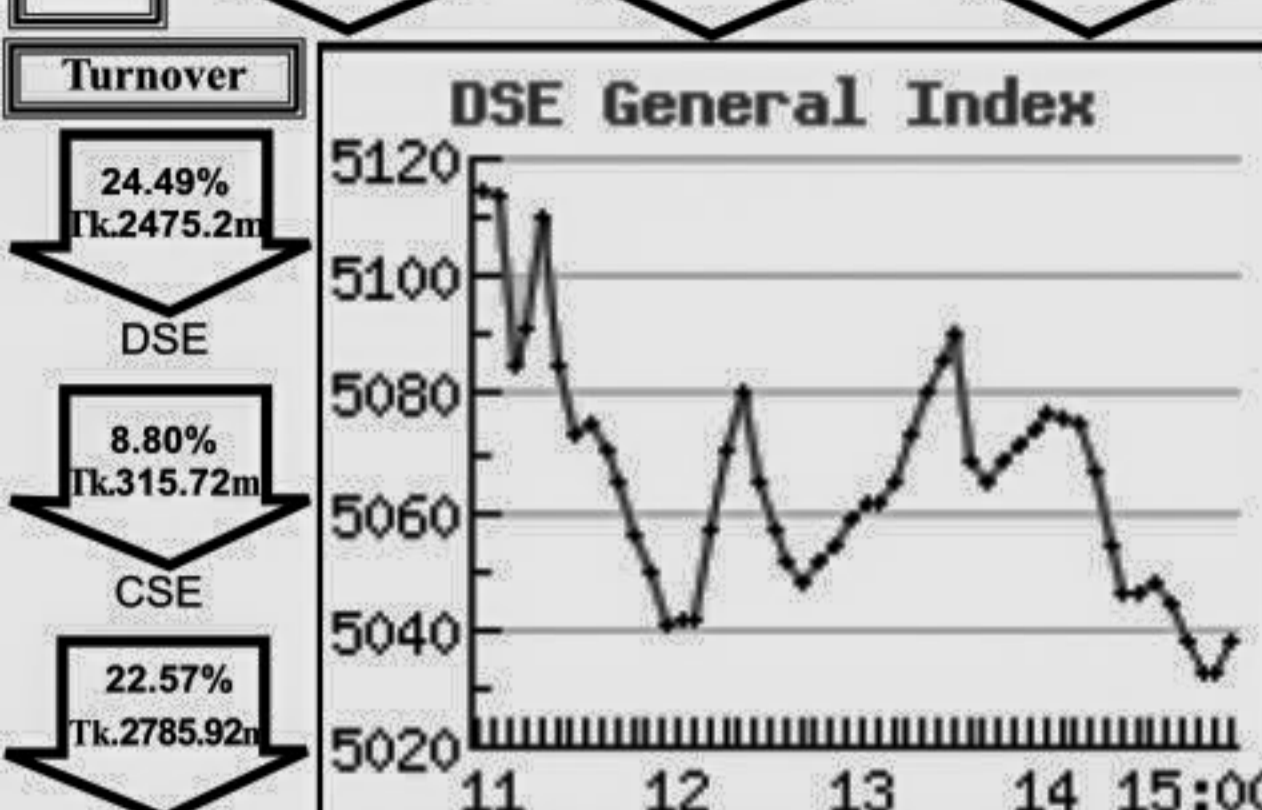


### Capital Market Highlights: January 15, 2012

INDEX			
	All Share	DSE General	DSE 20
DSE	4207.0753 (-1.55%)	5031.98964 (-1.61%)	3767.74837 (-1.27%)
CSE			
	All Share	CSE CSCX	CSE 30
CSE	14363.7855 (-1.71%)	9229.3441 (-1.77%)	13224.9913 (-1.42%)



### Key Features - January 15, 2012

Indicators	DSE	CSE	TOTAL
Turnover (Million Taka)	2,475.23	315.72	2,790.95
Turnover (Volume)	49,935,097	7,334,858	57,269,955
No. of Contract	82,899	13,147	96,046
Traded Issues	255	177	255
Issue Gain (Avg. Price Basis)	8	6	8
Issue Loss (Avg. Price Basis)	247	171	247
Unchanged Issue (Avg. Price Basis)	-	-	-
Market Cap. Equity (Billion Tk.)	1,989.58	1,915.73	1,989.58
Market Cap. Equity (Billion US\$)	25.67	24.72	25.67

### Combined Turnover Leaders

Company	Volume (Share)	Value (M. Taka)	% of Total	Average Price
UNITED AIR-A	6222233	141.87	5.08	22.8
Grameenphone-A	733800	126.83	4.54	172.83
BEXIMCO Ltd. -A	1056578	112.84	4.04	106.8
Aftab Auto.-A	748000	99.88	3.58	133.53
National Bank -A	1415348	97.26	3.48	68.72
R. N. Spinning-A	939515	67.43	2.42	71.77
Social Islami. B-A	2559586	63.99	2.29	25
Beacon Pharma Ltd.-B	1794575	57.90	2.07	32.27
Saiham Tex.A	1068100	56.43	2.02	52.83
Keya Cosmetics -A	745030	50.74	1.82	68.11
Fu-wang Ceramic-A	1075608	44.07	1.58	40.97
S. Alam CR Steel -A	644980	40.16	1.44	62.26
UCBL - A	945277	38.81	1.39	41.06
People's Leasing-A	510811	33.48	1.20	65.54
M.I. Cement-N	319329	32.48	1.16	101.7
Beximco Pharma -A	362742	32.12	1.15	88.56
Utara Bank - A	450916	32.03	1.15	71.03
Mercantile Bank -A	1024330	31.63	1.13	30.88
Malek Spinning-A	962650	30.77	1.10	31.96
BSRM Steels-A	267840	30.56	1.10	114.1
Zahintex Ind.-N	606500	29.49	1.06	48.63
LafargeS Cement-Z	1012500	29.12	1.04	28.76
BSC-A	53130	28.93	1.04	544.58
Square Pharma -A	126260	28.81	1.03	228.2
Pubali Bank - A	623151	28.15	1.01	45.17
Eastern Bank - A	444335	27.60	0.99	62.12
CMC Kamal Tex. -A	703286	27.29	0.98	38.8
Fu-Wang Food -A	584342	26.79	0.96	45.84
Rangpur Dairy-N	654400	26.23	0.94	40.08
Southeast Bank-A	909830	25.50	0.91	28.02

### Sectoral Turnover Summary

Sector	DSE		CSE		Total	
	Mill. (Tk.)	%	Mill. Tk.	%	Mill. Tk.	%
Bank	515.07	20.81	76.93	24.76	592.00	21.25
NBFI	192.64	7.78	16.78	5.40	209.42	7.52
Investment	50.10	2.02	4.50	1.45	54.60	1.96
Engineering	252.66	10.21	33.64	10.83	286.30	10.28
Food & Allied	87.61	3.54	6.48	2.08	94.09	3.38
Fuel & Power	117.23	4.74	9.77	3.15	127.00	4.56
Jute	1.07	0.04	0.00	0.00	1.07	0.04
Textile	309.74	12.51	39.94	12.51	349.67	12.55
Pharma & Chemical	197.01	7.96	21.50	6.93	218.51	7.84
Paper & Packaging	0.06	0.00	0.17	0.04	0.23	0.01
Service	20.35	0.82	4.30	0.98	24.65	0.88
Leather	12.20	0.49	0.95	0.22	13.15	0.47
Ceramic	67.12	2.71	7.37	2.37	74.49	2.67
Cement	71.78	2.90	20.49	6.63	92.26	3.31
Information Technology	30.29	1.22	4.38	1.00	34.68	1.24
General Insurance	152.57	6.16	7.23	1.66	159.80	5.74
Life Insurance	37.25	1.51	1.26	0.29	38.51	1.38
Telecom	111.06	4.49	12.68	2.90	123.74	4.44
Travel & Leisure	100.61	4.06	22.92	5.25	123.53	4.43
Miscellaneous	147.22	5.95	19.34	4.43	166.56	5.98
Debtenture	1.61	0.06	0.07	0.02	1.67	0.06

### Sectoral P/E & EPS

Sector	P/E		EPS(%)	
	DSE	CSE	DSE	CSE
Bank	9.28	9.29	46.22	46.22
NBFI	16.29	15.58	54.53	55.10
Investment	6.96	7.04	16.80	16.80
Engineering	23.25	23.50	42.86	40.75
Food & Allied	15.41	15.35	126.72	128.70
Fuel & Power	14.00	14.02	61.87	61.87
Textile	11.54	10.99	28.54	28.47
Pharma. & Chemical	23.59	22.67	66.49	56.96
Paper & Printing	27.06	26.48	12.41	13.27
Service	9.47	9.54	65.49	65.49
Leather	15.00	15.14	104.33	129.27
Ceramic	27.90	27.83	21.98	21.98
Cement	19.29	19.28	67.36	67.36
IT	21.28	21.17	12.37	12.37
General Insurance	16.61	16.52	37.57	38.24
Life Insurance	20.03	20.23	95.84	95.84
Telecom	21.79	21.80	79.30	79.30
Travel & Leisure	21.91	32.29	9.85	7.10
Miscellaneous	6.96	6.97	135.63	131.73
Stock Exchanges	13.16	12.94	49.16	48.85

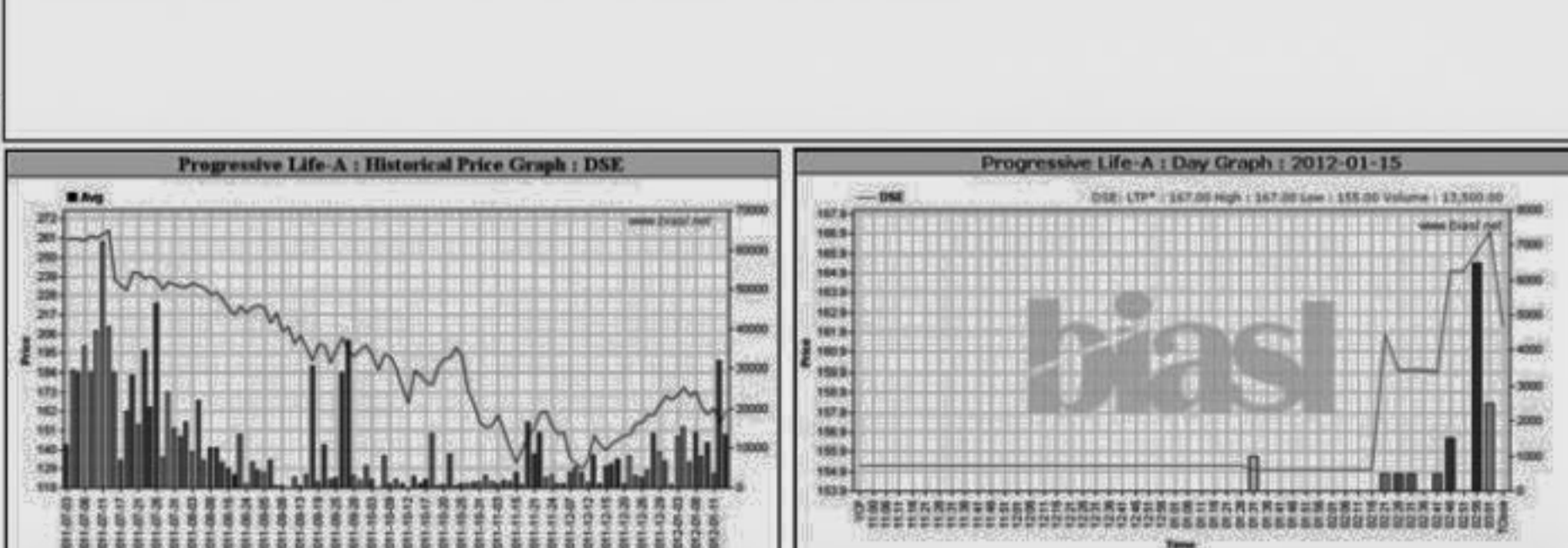
All the above PE and EPS are estimated to get a relative idea only and not calculated by any of the stock exchanges.

Prepared exclusively for Daily Star by Business Information Automated Service Line (BIASL), on the basis of information collected from daily stock quotations and audited reports of the listed companies. High level of caution has been taken to collect and present the above information and data. The publisher will not take any responsibility if any body uses this information and data for his/her investment decision. For any query please email to biasl@bol-online.com or call 01552153562 or go to www.biasl.net

### Capital Gainers

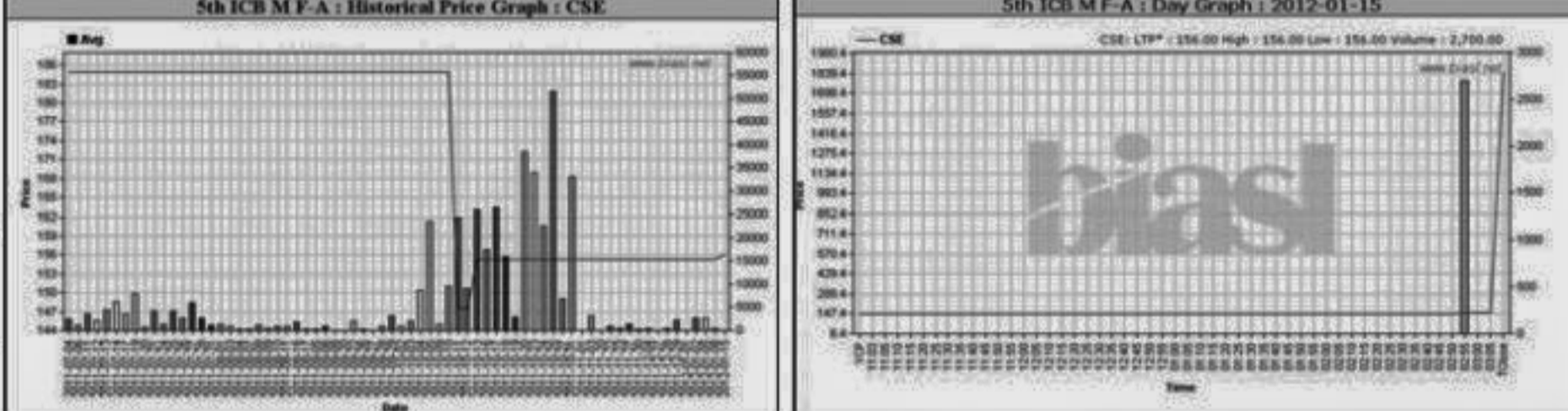
#### Dhaka Stock Exchange

Company	Price Chn. (%)		Price Scale				Turnover		BookV			
	Close	Avg.	Avg.	Close	DayHi	DayLo	Yr Hi	YrLo	M.Tk	Per S	EPS	PE
Northern Jute-Z	8.00	8.00	27.00	27.00	27.00	27.00	50.4	17.0	0.005	8.6	-8.19	-3.30
Progressive Life-A	4.51	4.64	162.22	162.20	167.00	155.00	327.9	122.1	2.190	26.05	1.75	92.70
ICB AMCL 1st NRB -A	4.47	4.15	30.40	30.40	30.40	30.40	54.2	27.9	0.030	17.61	4.81	6.32
1st Janata Bank MF-A	2.25	2.13	9.11	9.10	9.30	8.70	11.5	6.7	5.837	10.29	0.91	10.01
Popular Life Insu. -A	1.48	1.56	254.00	253.70	258.00	243.00	608.0	222.1	0.508	60.17	20.45	12.42
Renata Ltd. -A	0.92	0.81	1,228.00	1,228.90	1,249.90	1,220.00	1410.01012.0		0.307	126.72	37.69	32.58
GeminiSeaFoodA	0.54	0.27	260.00	260.60	265.90	250.00	405.0	144.1	0.039	0.3	9.48	27.43



### Chittagong Stock Exchange

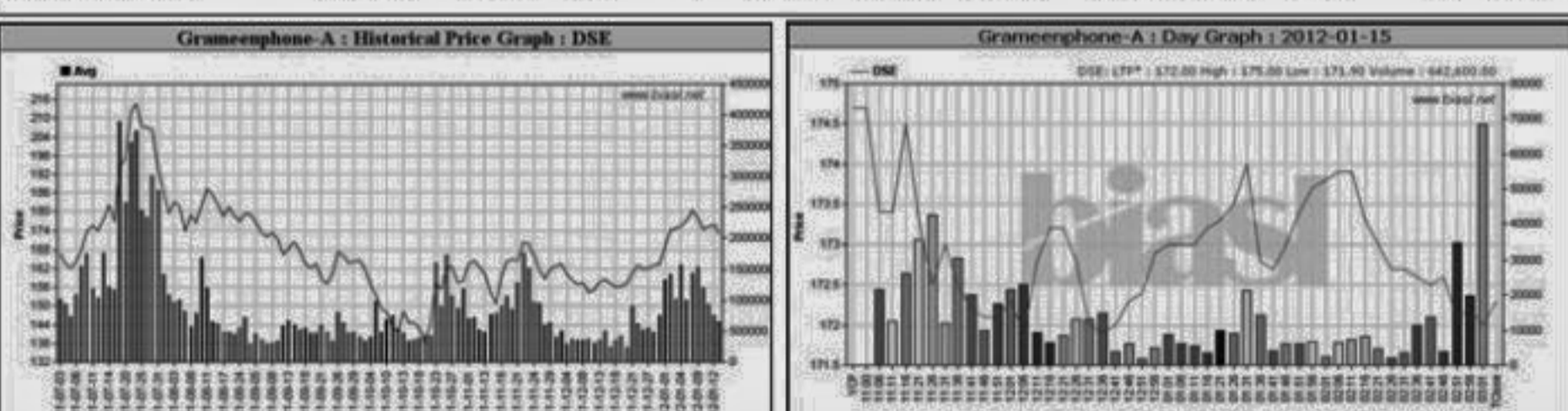
Company	Price Chn. (%)	Price Scale	Turnover	BookV
5th ICB M F-A	0.45	0.45	156.00	156.00
ICB Emp. PMF-A	-11.11	-3.53	8.20	8.00
Power Grid Co. -A	-9.38	-4.90	58.96	58.00
Hakkani P& Paper-B	-7.69	-7.40	36.05	36.00
Saiham Tex.A	-7.14	-8.11	52.72	52.00
Alltex Industries-Z	-6.67	-5.35	14.50	14.00
Standard Insurance-A	-6.52	-4.24	43.33	43.00
National Polymer -A	-6.45	-6.45	57.99	58.00
Phoenix Finance-A	-6.41	-8.94	73.00	73.00
Berger Paints-A	-6.32	-6.27	548.33	548.00
Provat Insur.-A	-6.25	-4.94	45.00	45.00



### Turnover Leaders

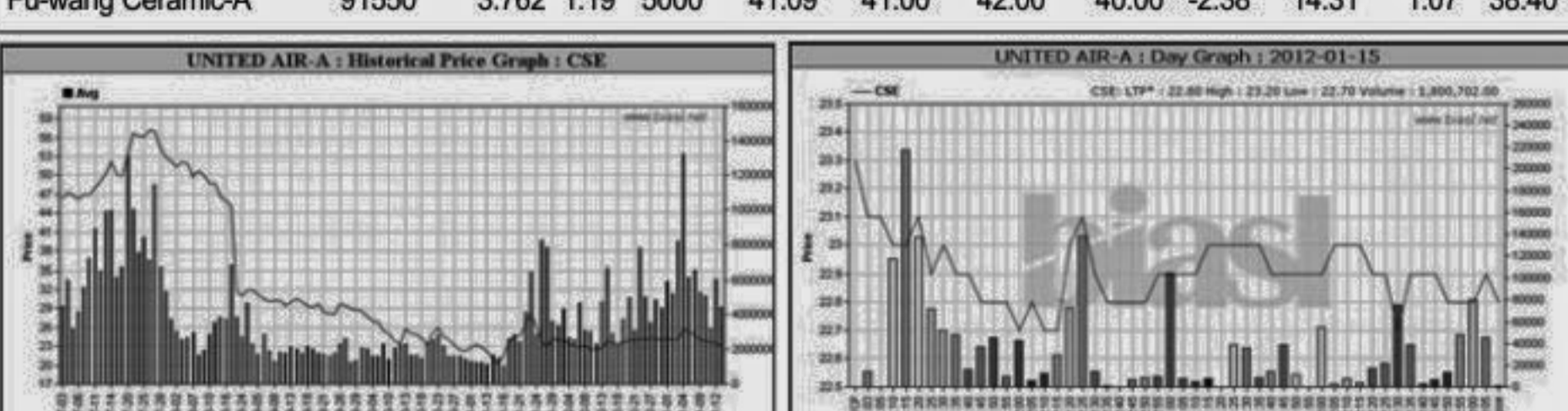
#### Dhaka Stock Exchange

Company	Vol. Share	Value (M.Tk.)	% of Total	Price Scale				C.Pite		BookV	
				Avg. Close	DayHi	DayLo	Chn%	Per S	EPS	PE	
Grameenphone-A	642600	111.062	4.49	172.83	172.30	175.00	171.90	-1.37	27.07	7.93	21.79
UNITED AIR-A	4421531	100.609	4.06	22.75	22.70	23.50	22.60	-1.73	12.64	0.71	32.04
BEXIMCO Ltd. -A	906913	96.816	3.91	106.75	106.50	110.00	105.80	-1.93	49.26	19.28	5.54
National Bank -A	1208683	83.100	3.36	68.75	69.00	69.80	68.00	-0.72	22.21	7.98	8.62
Aftab Auto.-A	608874	81.287	3.28	133.50	132.20	137.00	131.90	-4.48	56.28	19.61	6.81
R. N. Spinning-A	864220	62.031	2.51	71.78	71.80	73.10	70.80	-1.78	12.38	3.88	18.50
Social Islami. B-A	2232871	55.809	2.25	24.99	24.80	25.50	24.80	-1.98	12.32	1.89	13.22
Beacon Pharma Ltd.-B	1489300	48.055	1.94	32.27	31.90	33.00	31.70	-3.33	11.54	0.49	65.86
Keya Cosmetics -A	703425	47.908	1.94	68.11	67.30	69.70	67.20	-2.75	20.69	3.63	18.76
Saiham Tex.A	893600	47.227	1.91	52.85	51.90	56.60	51.50	-8.30	12.24	3.31	15.97
Fu-wang Ceramic-A	984058	40.307	1.63	40.96	40.50	41.90	40.30	-3.11	10.37	1.07	38.28
S. Alam CR Steel -A	608030	37.861	1.53	62.27	62.60	63.20	61.30	0.00	20.14	1.63	38.20
UCBL - A	722072	29.623	1.20	41.02	40.80	41.90	40.60	-1.89	10.74	6	6.84
Utara Bank - A	413766	29.400	1.19	71.05	70.70	72.40	70.50	-1.67	28.28	5.4	13.16
R.N. Spinning-A	445661	29.208	1.18	65.54	65.10	67.00	64.90	-1.86	17.69	5.41	12.11
M.I. Cement-N	284939	28.895	1.17	101.74	101.60	101.10	101.10	-1.07	62	5.36	18.98
Beximco Pharma -A	319342	28.285	1.14	88.57	87.90	90.10	87.80	-2.22	78.53	5.17	17.13
Mercantile Bank -A	895310	27.639	1.12	30.87	30.70	31.50	30.50	-1.60	16.96	3.36	9.19
CMC Kamal Tex. -A	703286	27.291	1.10	38.80	38.30	39.60	38.20	-2.79	34.91	1.92	20.21
Zahintex Ind.-N	557000	27.098	1.09	48.65	48.40	49.60	47.90	-1.22	23.87	1.6	30.41



### Chittagong Stock Exchange

Company	Vol. Share	Value (M.Tk.)	% of Total	Average
UNITED AIR-A	1800702	41.261	13.07	43300
Aftab Auto.-A	139126	18.594	5.89	2500
BEXIMCO Ltd. -A	149665	16.024	5.08	5300
Grameenphone-A	91200	15.763	4.99	2400
National Bank -A	206685	14.160	4.48	4700
Beacon Pharma Ltd.-B	305275	9.848	3.12	5000
LafargeS Cement-Z	341000	9.829	3.11	10000
Saiham Tex.A	174500	9.199	2.91	26400
UCBL - A	223205	9.189	2.91	7750
Social Islami. B-A	326715	8.180	2.59	10000
R. N. Spinning-A	75295	5.395	1.71	2000
BSC-A	9450	5.159	1.63	500
BSRM Steels-A	44300	5.042	1.60	2000
Southeast Bank-A	172810	4.835	1.53	9750
Malek Spinning-A	143850	4.612	1.46	5000
People's Leasing-A	65150	4.270	1.35	1600
Maksons Spinning-A	118500	4.056	1.28	5000
Mercantile Bank -A	129020	3.994	1.26	4500
Beximco Pharma -A	43400	3.840	1.22	3500
Fu-wang Ceramic-A	91550	3.762	1.19	5000



### When to buy or sell

Investors follow many calculations of corporate performance when deciding if a stock is undervalued or overvalued. These range from the simple price-earn