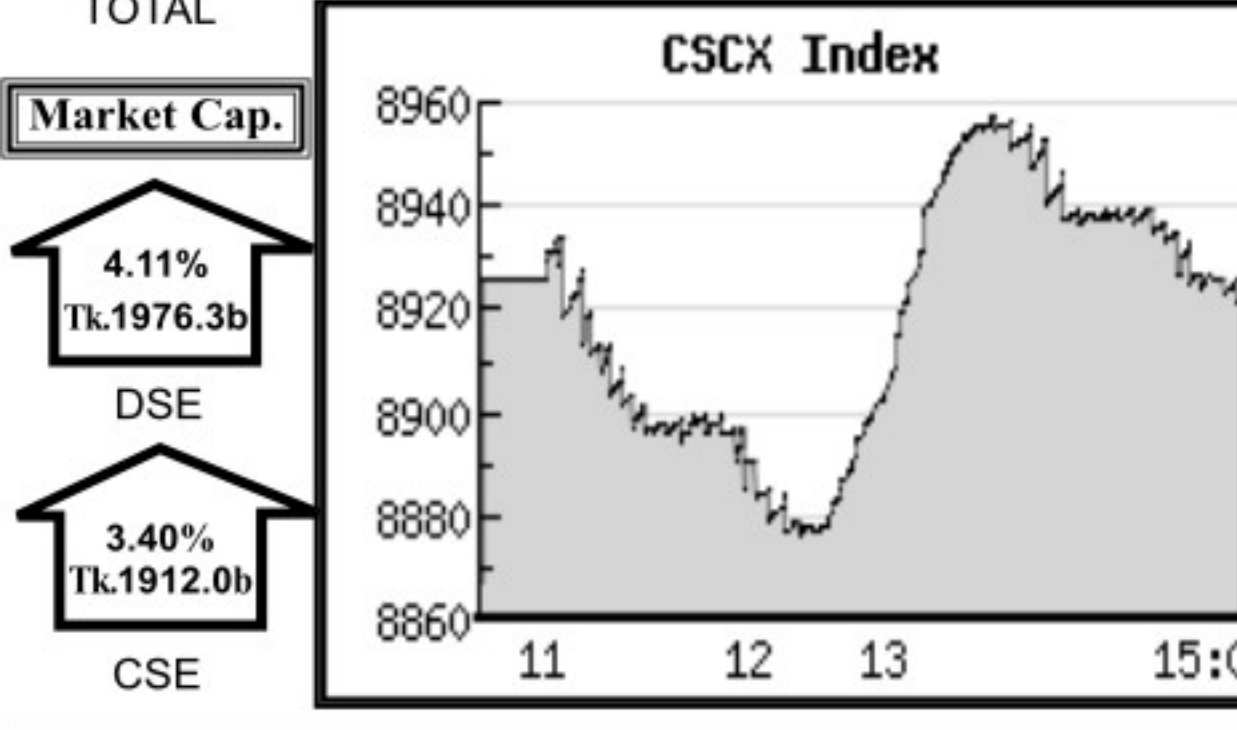
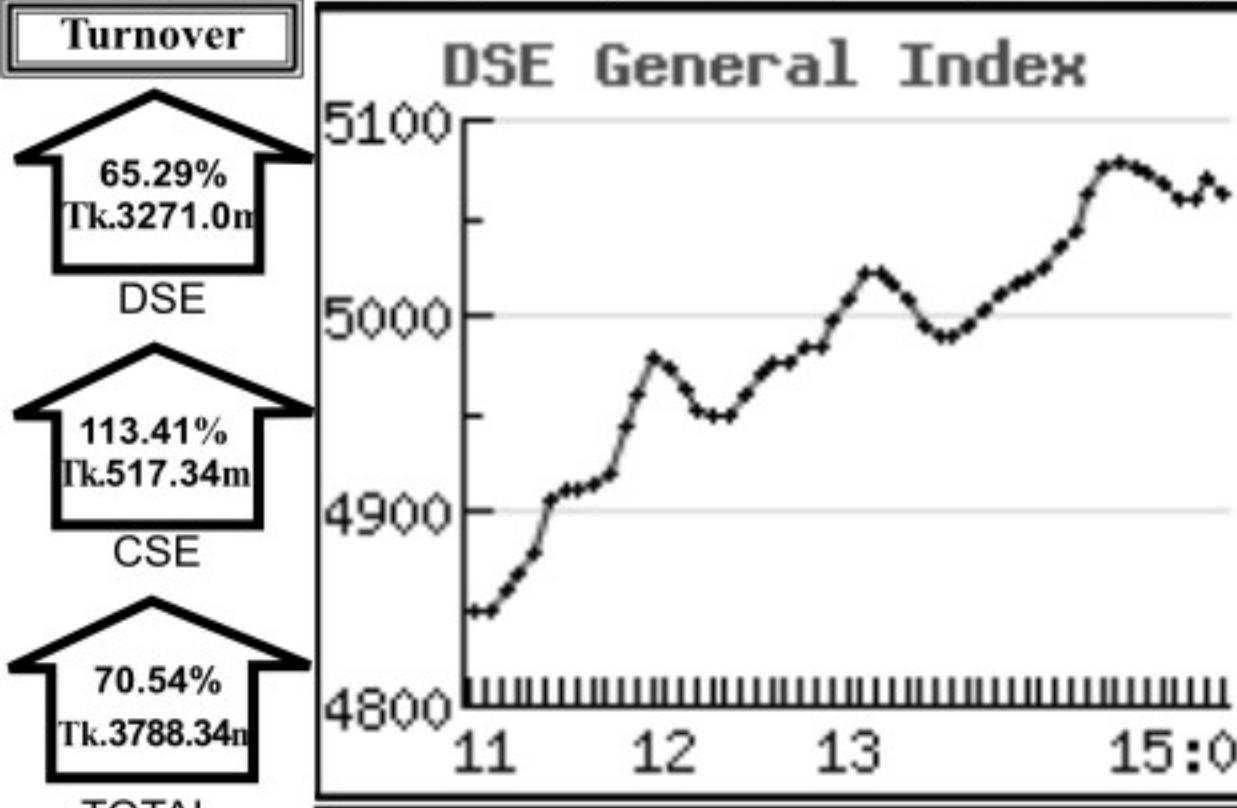


Capital Market Highlights: December 13, 2011

INDEX table showing All Share, DSE General, DSE 20, CSE All Share, CSE CSCX, CSE 30 with percentage changes.

Turnover table showing DSE (65.29% Tk.3271.0m), CSE (113.41% Tk.517.34m), and TOTAL (70.54% Tk.3788.34m).



Market Cap. table showing DSE (4.11% Tk.1976.3b) and CSE (3.40% Tk.1912.0b).

Key Features - December 13, 2011

Indicators table with columns for DSE, CSE, and TOTAL for metrics like Turnover, No. of Contract, Traded Issues, etc.

Combined Turnover Leaders

Table listing top companies by volume and value, including BEXIMCO Ltd., UNITED AIR-A, and National Bank - A.

Sectoral Turnover Summary

Table summarizing turnover by sector, including Bank, Investment, Engineering, and Textile.

Sectoral P/E & EPS

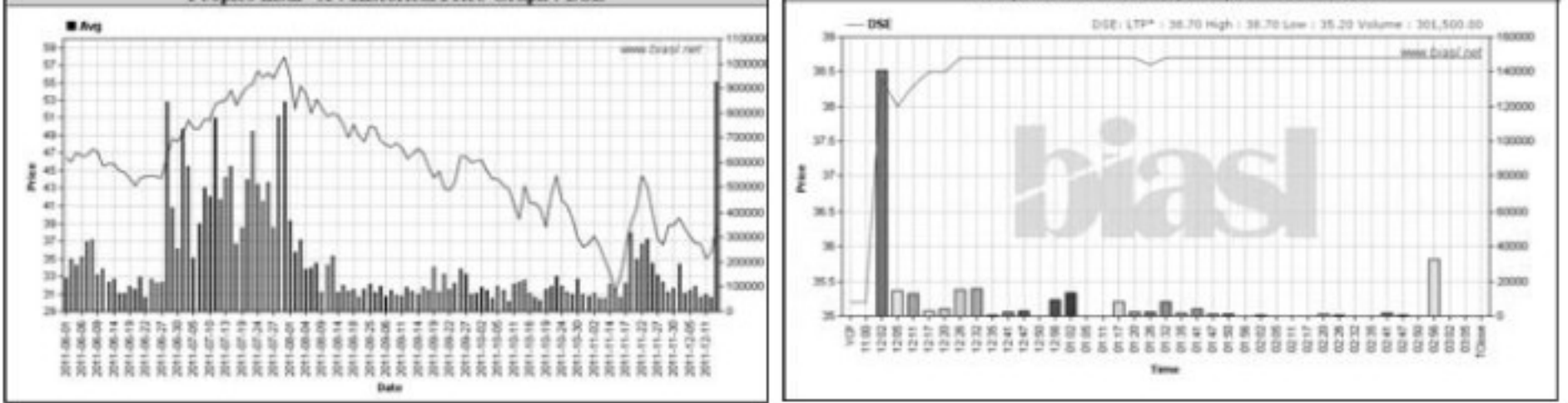
Table showing P/E and EPS ratios for various sectors like Bank, Investment, Engineering, etc.

All the above PE and EPS are estimated to get a relative idea only and not calculated by any of the stock exchanges.

Prepared exclusively for Daily Star by Business Information Automated Service Line (BIASL), on the basis of information collected from daily stock quotations and audited reports of the listed companies.

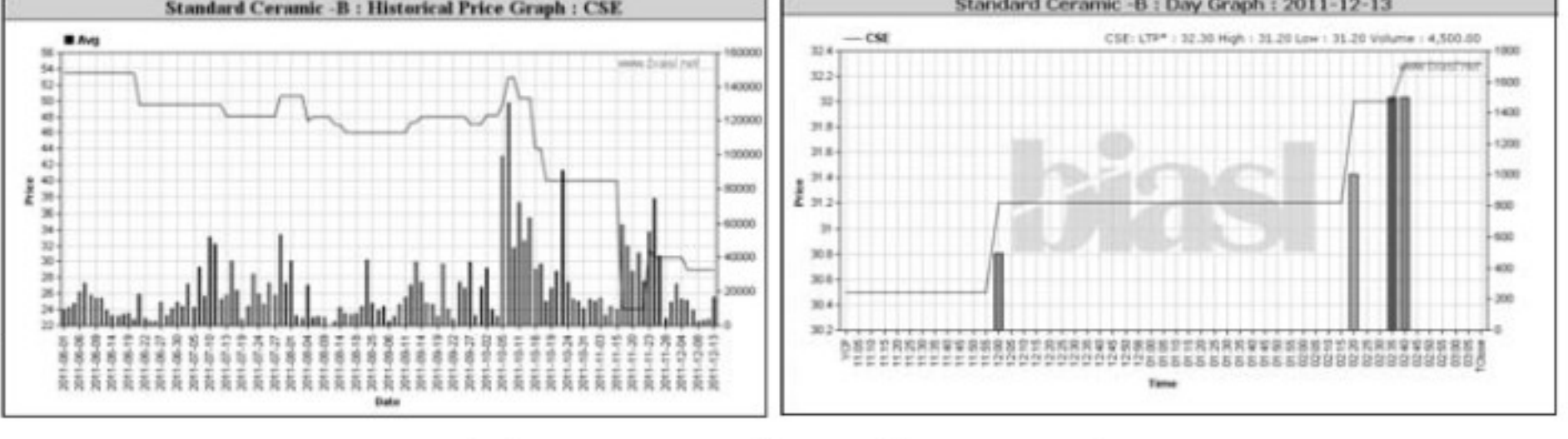
Capital Gainers

Dhaka Stock Exchange table listing top gainers like Peoples Insur-A, Rahim Textile-A, and Mithun Knitting-A.



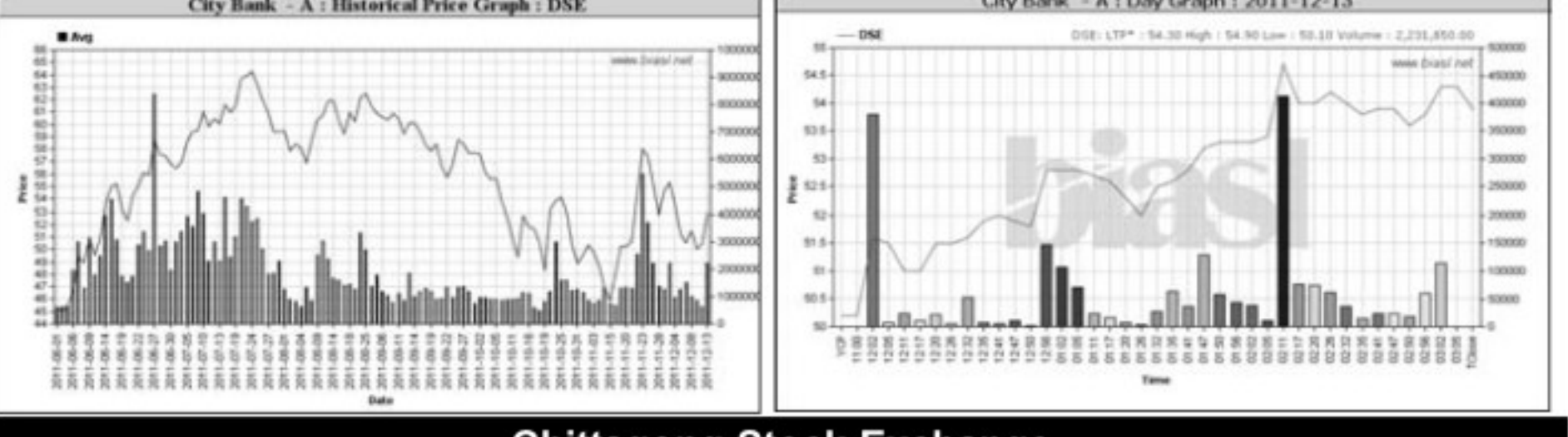
Chittagong Stock Exchange

Table listing top gainers in Chittagong like Standard Ceramic-B and Continental Insur-A.



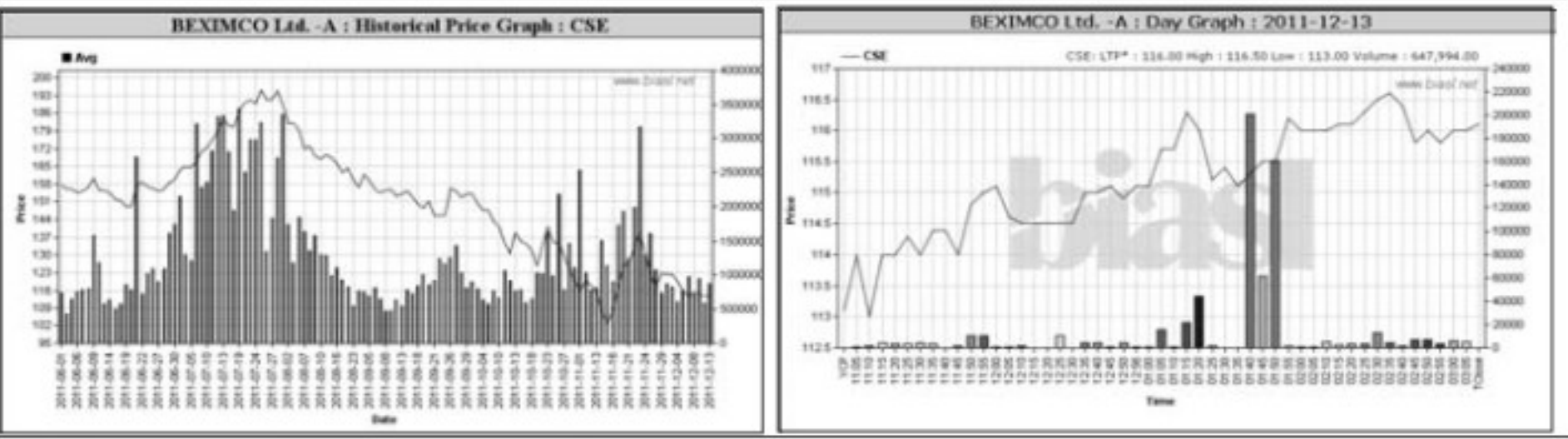
Turnover Leaders

Dhaka Stock Exchange table listing top turnover leaders like City Bank - A and Al Arafah Islami B-A.



Chittagong Stock Exchange

Table listing top turnover leaders in Chittagong like BEXIMCO Ltd.-A and Gramophone-A.



When to buy or sell

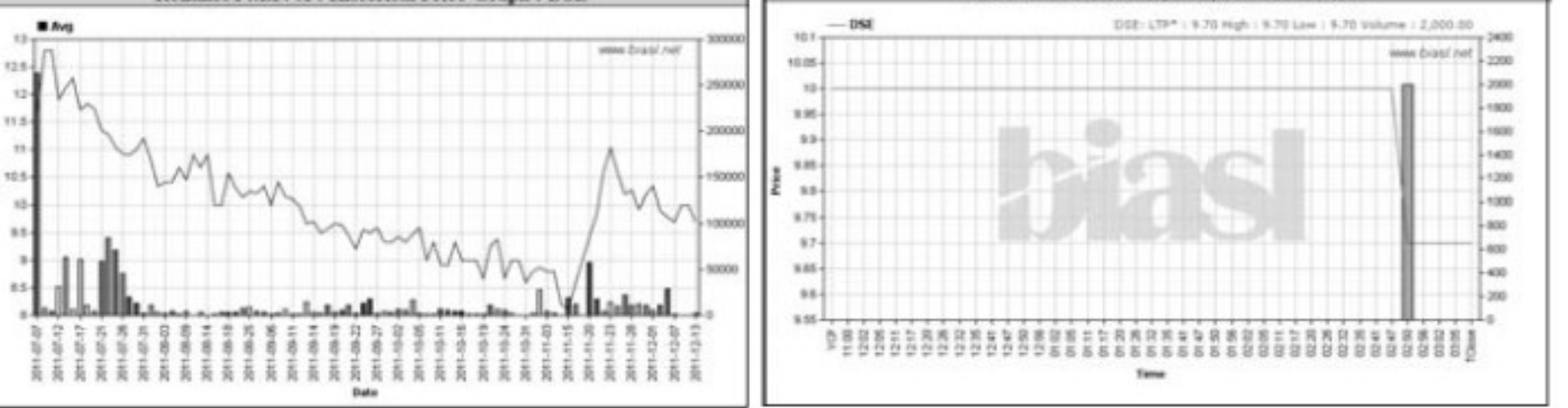
Investors follow many calculations of corporate performance when deciding if a stock is undervalued or overvalued. These range from the simple price-earnings ratio, or P/E, to far more technical ways of attempting to discern whether a stock is trending up or down.



Notes: Capital Gainer / Loser tables are prepared on the basis of the close price change of the traded issues. "Close" or "C Price" or "D Clo." is the Closing Price of the day.

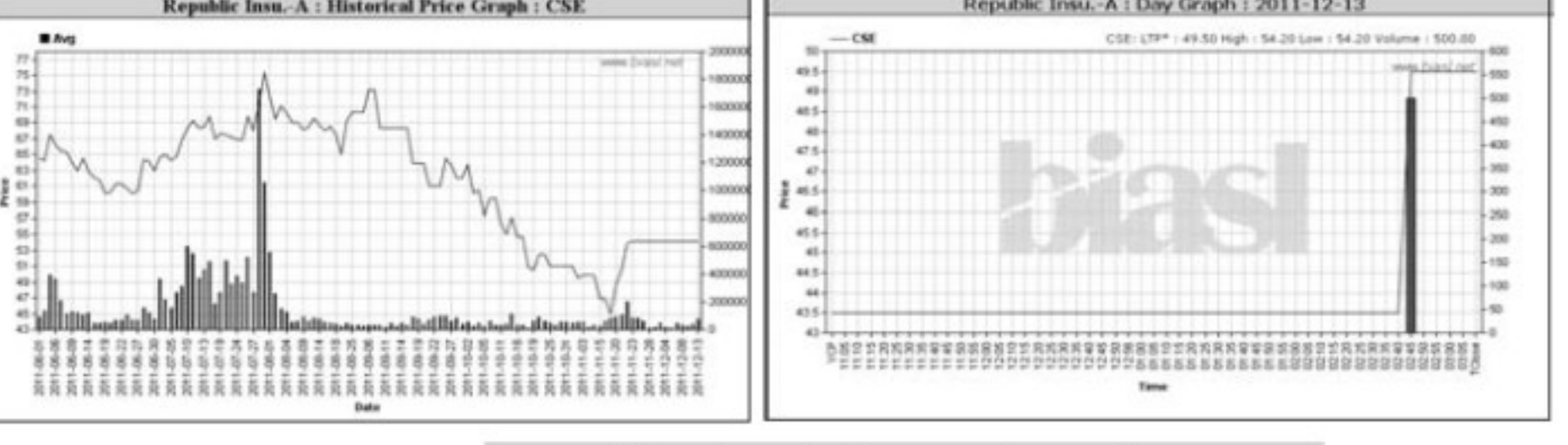
Capital Losers

Dhaka Stock Exchange table listing top losers like Reliance1 M.F.-A and Brac B.C. Bond-A.



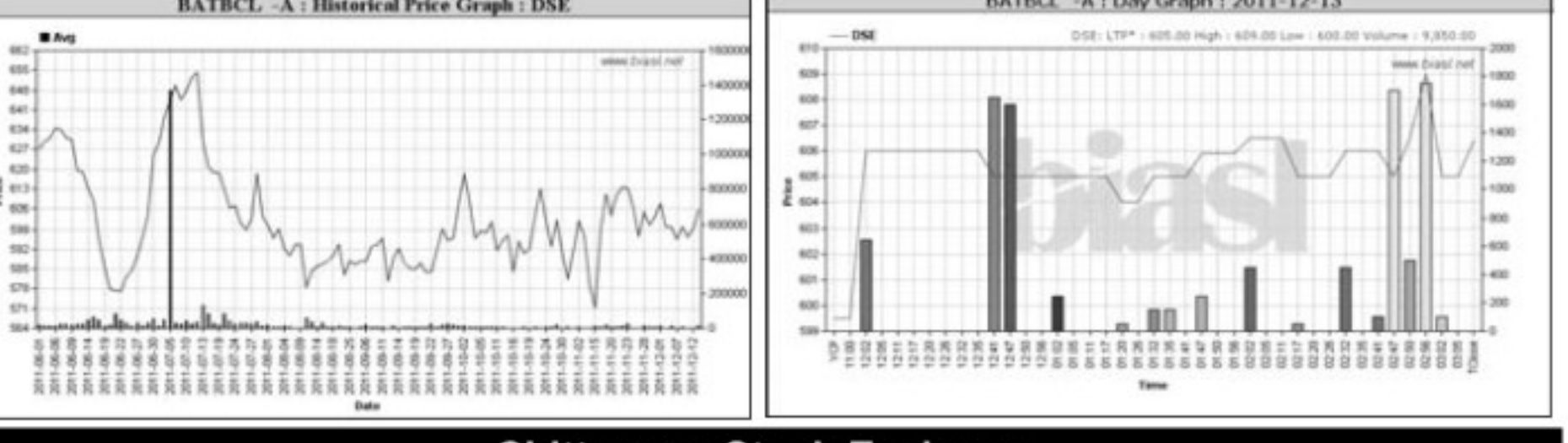
Chittagong Stock Exchange

Table listing top losers in Chittagong like Kohinor Chem -A and Republic Insu -A.



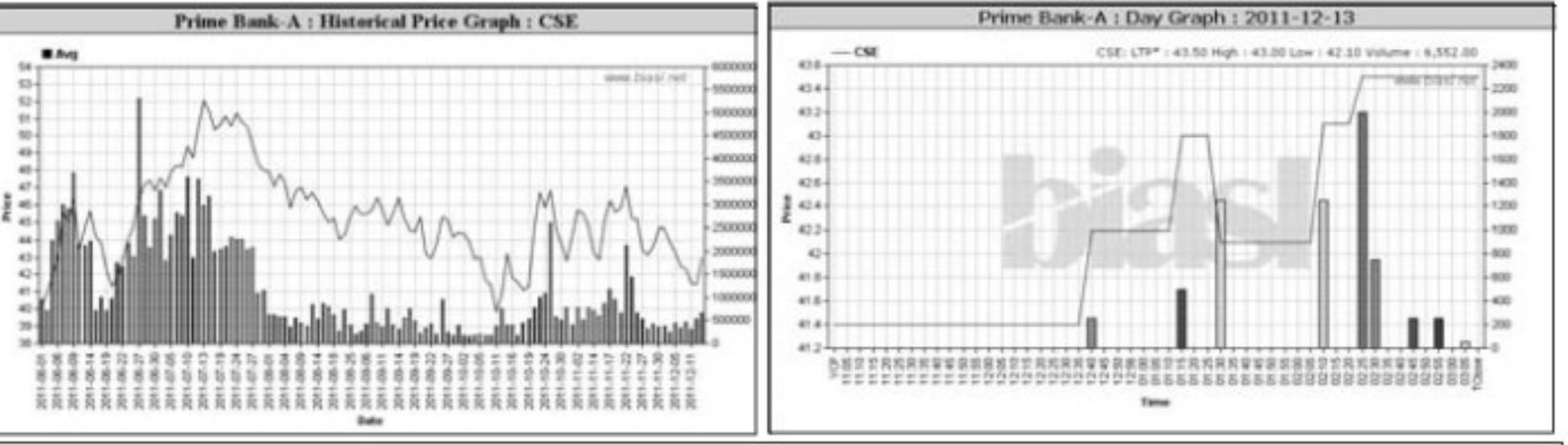
Market Cap. Leader

Dhaka Stock Exchange table listing market cap leaders like Gramophone-A and Titas Gas TDCLA.

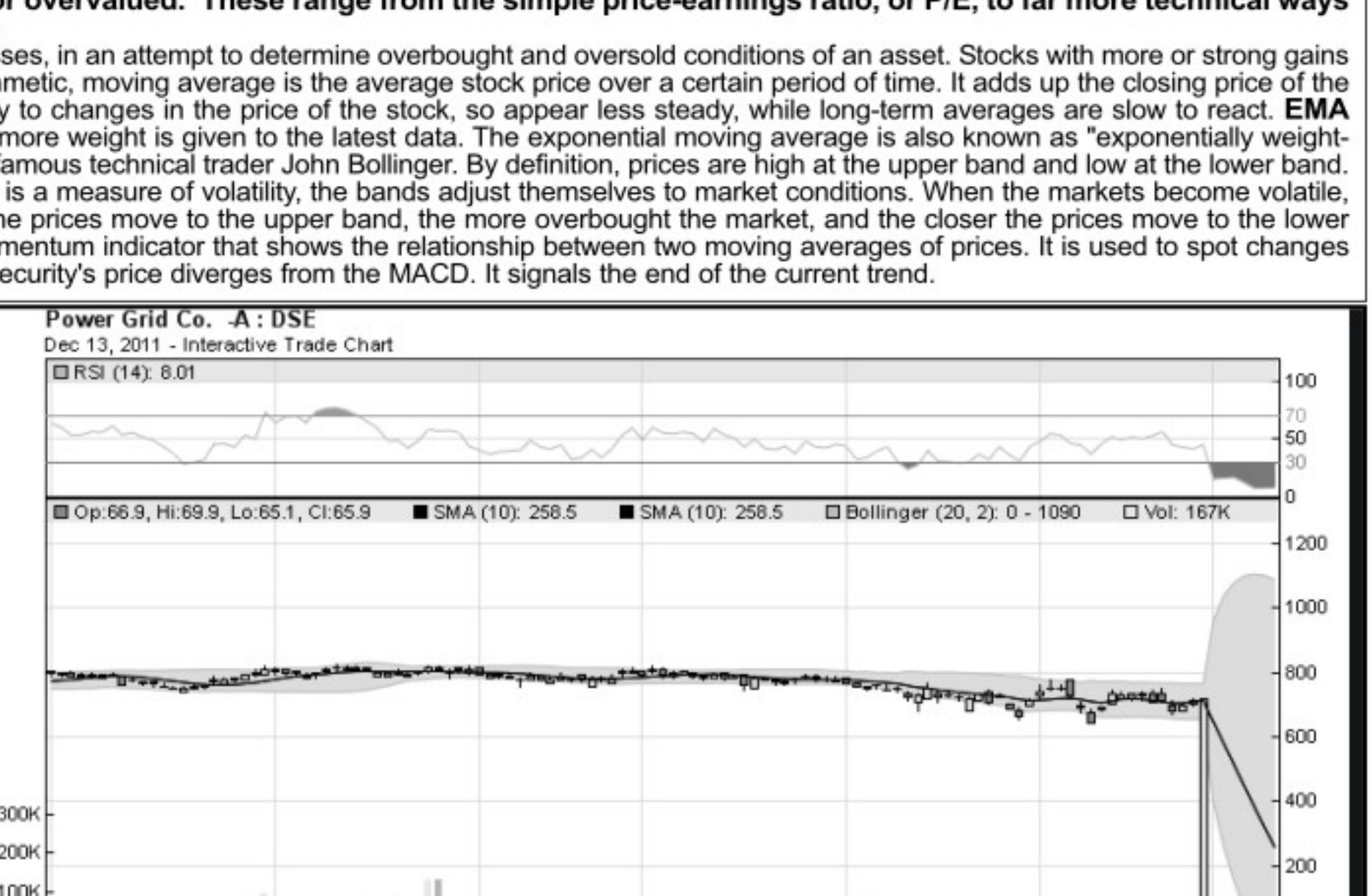


Chittagong Stock Exchange

Table listing market cap leaders in Chittagong like Gramophone-A and Titas Gas TDCLA.



Power Grid Co. - A: DSE



Notes: Capital Gainer / Loser tables are prepared on the basis of the close price change of the traded issues. "Close" or "C Price" or "D Clo." is the Closing Price of the day.