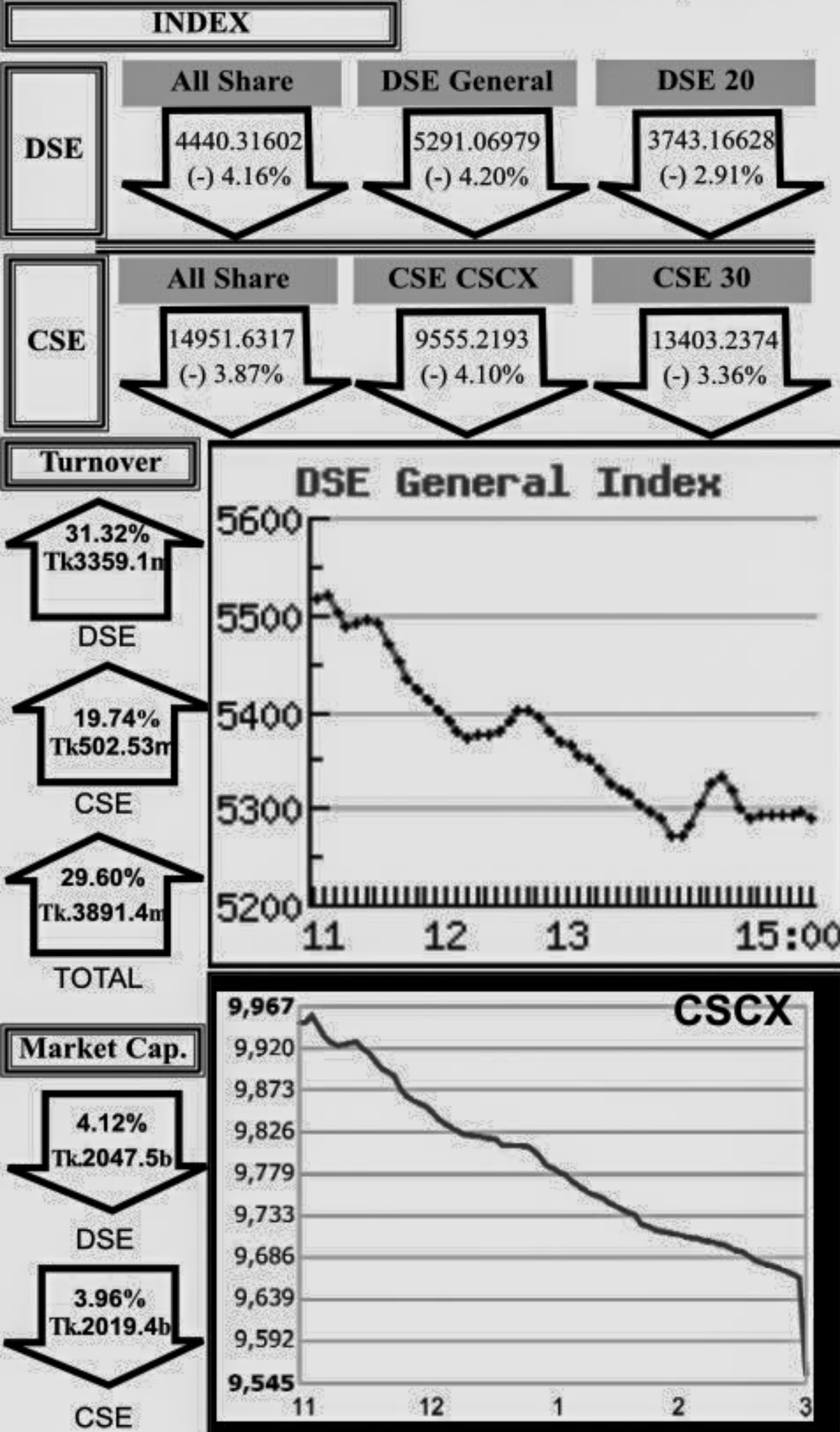


Capital Market Highlights: October 11, 2011

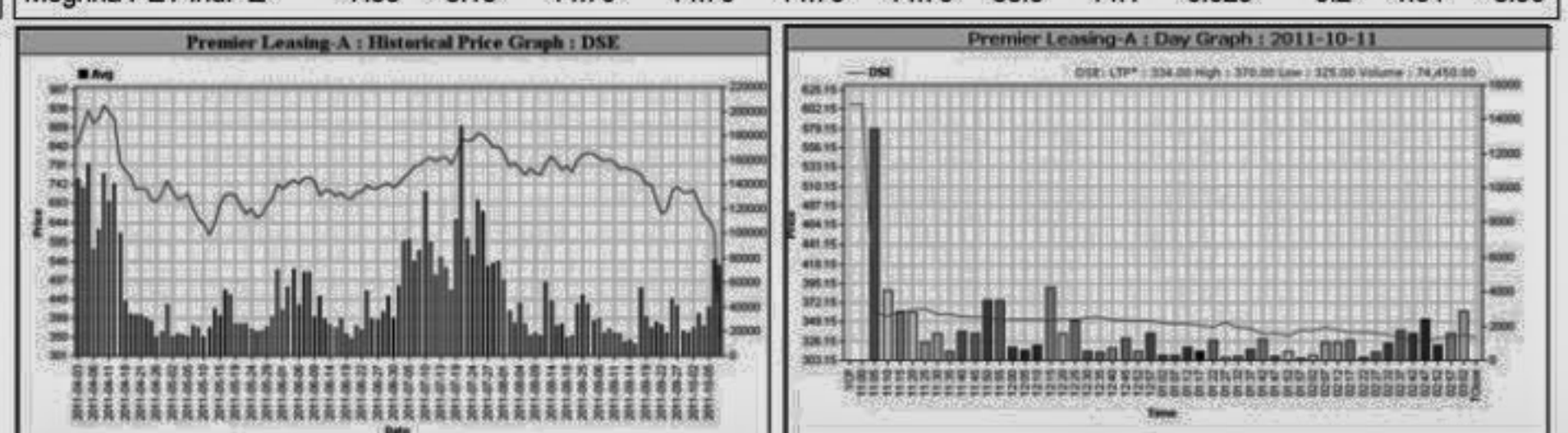
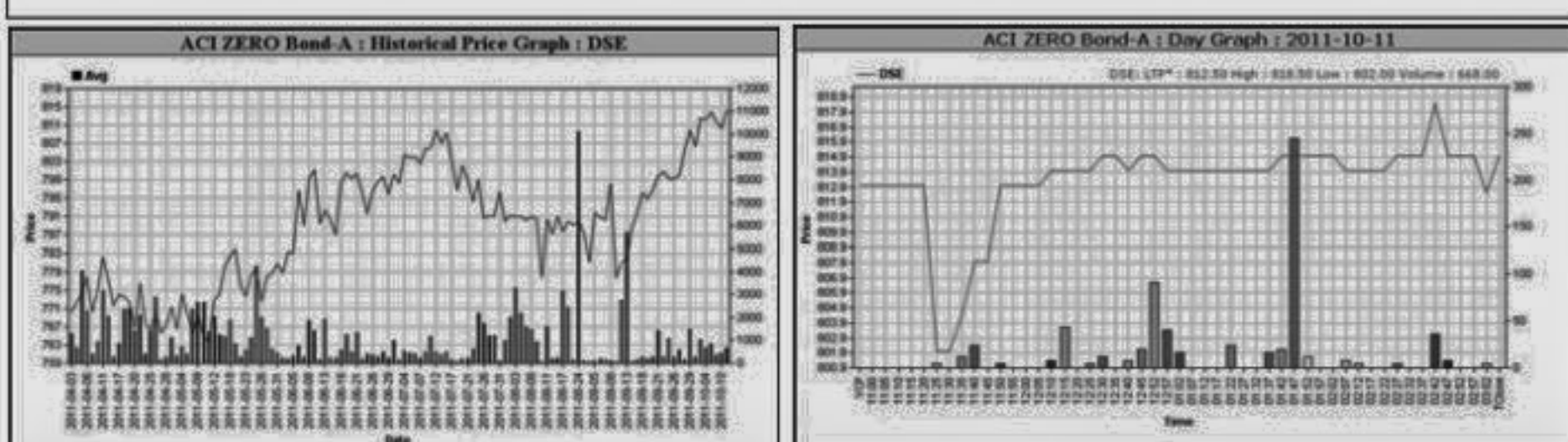


Capital Gainers

Company	Price Chn. (%)		Price Scale				Turnover		BookV			
	Close	Avg.	Avg.	Close	DayHi	DayLo	Yr Hi	YrLo	M.Tk	Per S	EPS	PE
ACI ZERO Bond-A	0.25	0.50	814.37	815.00	818.50	802.00	834.0	720.0	0.544	1000	0	-

Capital Losers

Company	Price Chn. (%)		Price Scale				Turnover		BookV			
	Close	Avg.	Avg.	Close	DayHi	DayLo	Yr Hi	YrLo	M.Tk	Per S	EPS	PE
Premier Leasing-A	-45.70	-43.33	350.98	330.25	370.00	325.00	1299.0	325.0	26.138	112.92	13.14	26.71

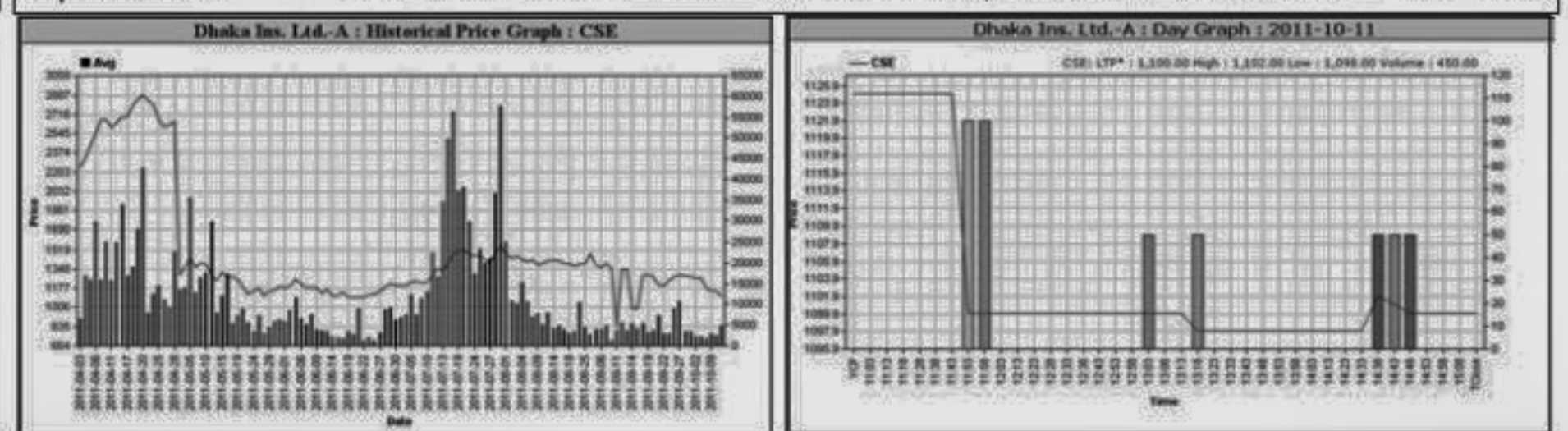
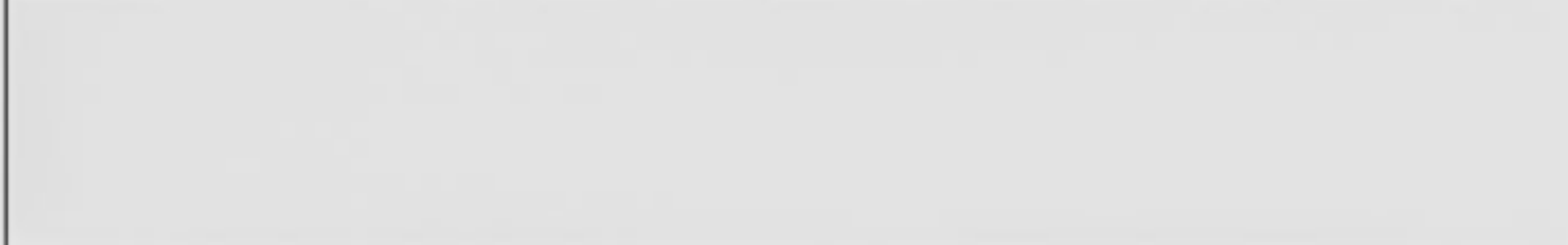


Chittagong Stock Exchange

Company	Vol.	Value	% of Total	Big Lot	Avg. Close	DayHi	DayLo	Chn%	Per S	EPS	PE	
ICB AMCL 2nd NRB -A	1.76	1.76	144.75	144.75	146.75	143.50	268.0	142.3	0.376	136.44	28.49	5.08

Chittagong Stock Exchange

Company	Vol.	Value	% of Total	Big Lot	Avg. Close	DayHi	DayLo	Chn%	Per S	EPS	PE	
Dhaka Ins. Ltd.-A	-60.60	-4.59	1,100.11	443.25	455.00	443.25	3,099.0	44.5	0.495	293.26	109.52	10.04



Key Features - October 11, 2011

Indicators	DSE	CSE	TOTAL
Turnover (Million Taka)	3,359.12	502.53	3,861.64
Turnover (Volume)	42,254,717	8,249,905	50,504,622
No. of Contract	100,106	21,394	121,500
Traded Issues	260	189	260
Issue Gain (Avg. Price Basis)	6	8	6
Issue Loss (Avg. Price Basis)	253	181	253
Unchanged Issue (Avg. Price Basis)	1	-	1
Market Cap. Equity (Billion Tk.)	2,047.54	2,019.45	2,047.54
Market Cap. Equity (Billion US\$)	26.42	26.06	26.42

Combined Turnover Leaders

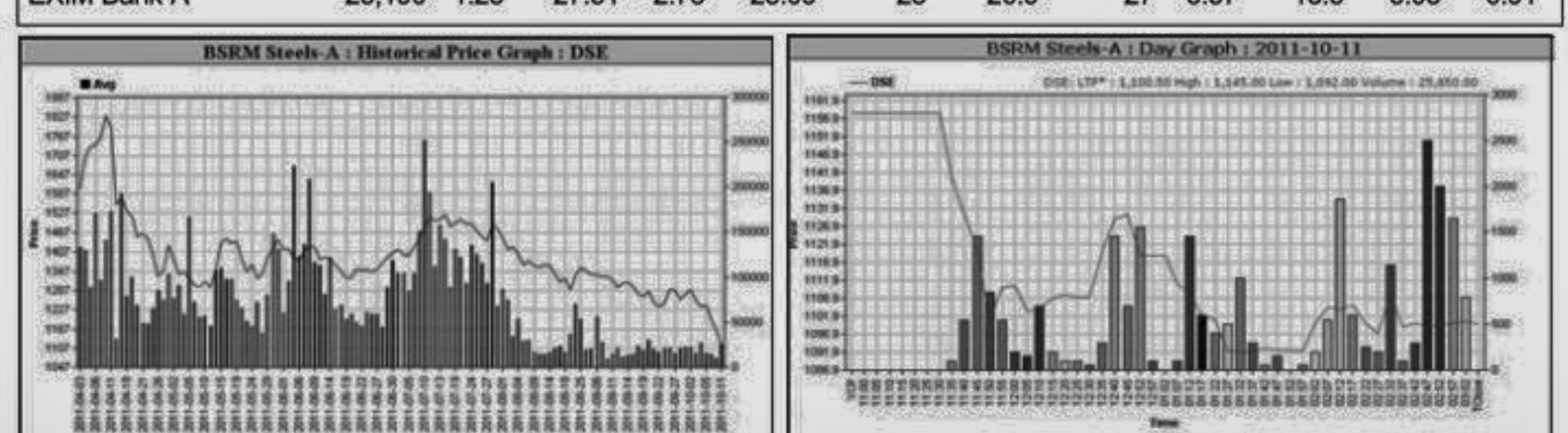
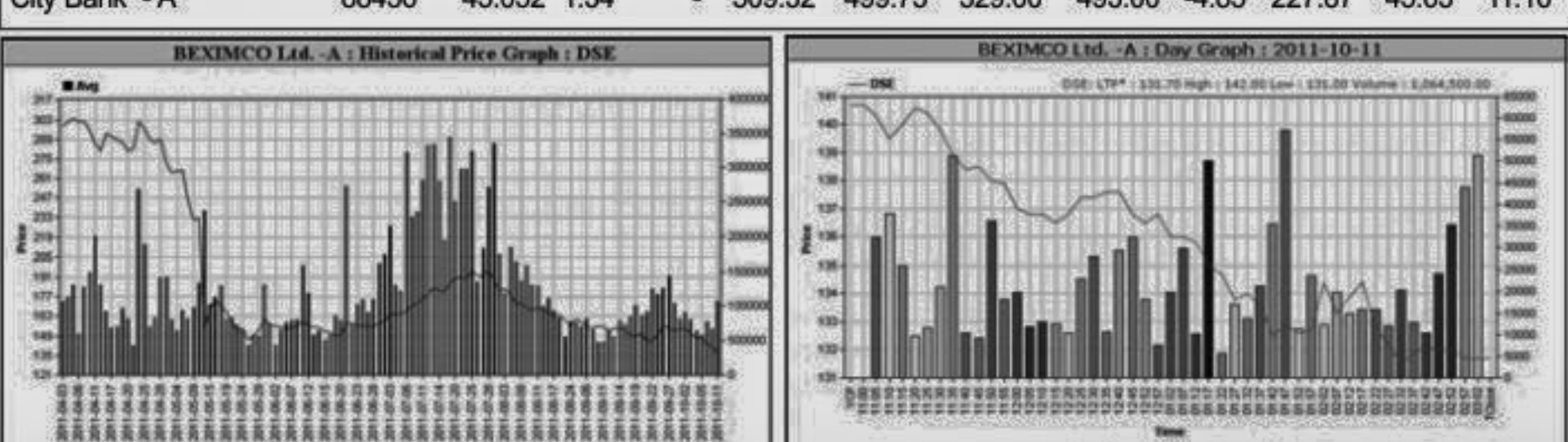
Company	Volume (Share)	Value (M. Taka)	% of Total	Average Price
BEXIMCO Ltd. -A	1378853	186.75	4.84	135.44
LafargeS Cement-Z	465650	164.69	4.26	353.68
Grameenphone-A	855400	122.32	3.17	143

Turnover Leaders

Company	Vol.	Value	% of Total	Big Lot	Price Scale			C. Pts	BookV		
					Avg. Close	DayHi	DayLo				
BEXIMCO Ltd. -A	1067565	144,669.43	4.31	135.51	131.70	142.00	131.00	-6.40	49.26	19.28	7.03

Market Cap. Leader

Company	Market Cap. M. Tk.	% of Total	Average			Price Scale			BookV			
			Price	Chn.	P Day	D Hi	D Lo	D Clo.	Chn%	Per S	EPS	PE
Grameenphone-A	193,079	9.43	142.99	-3.39	148	147	140	141.3	-4.46	27.07	7.93	18.03

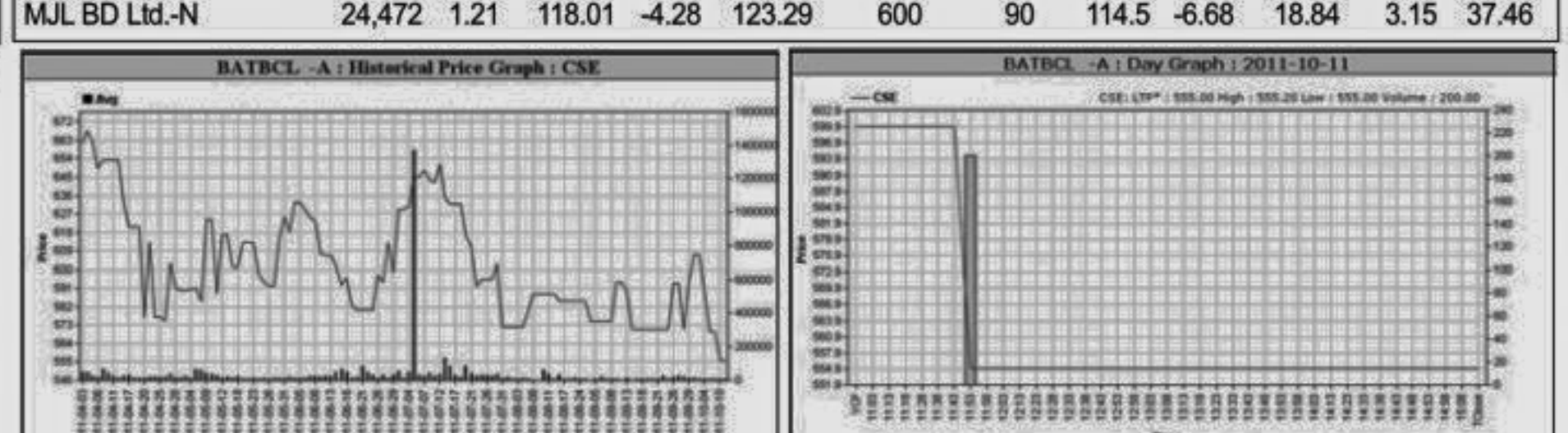
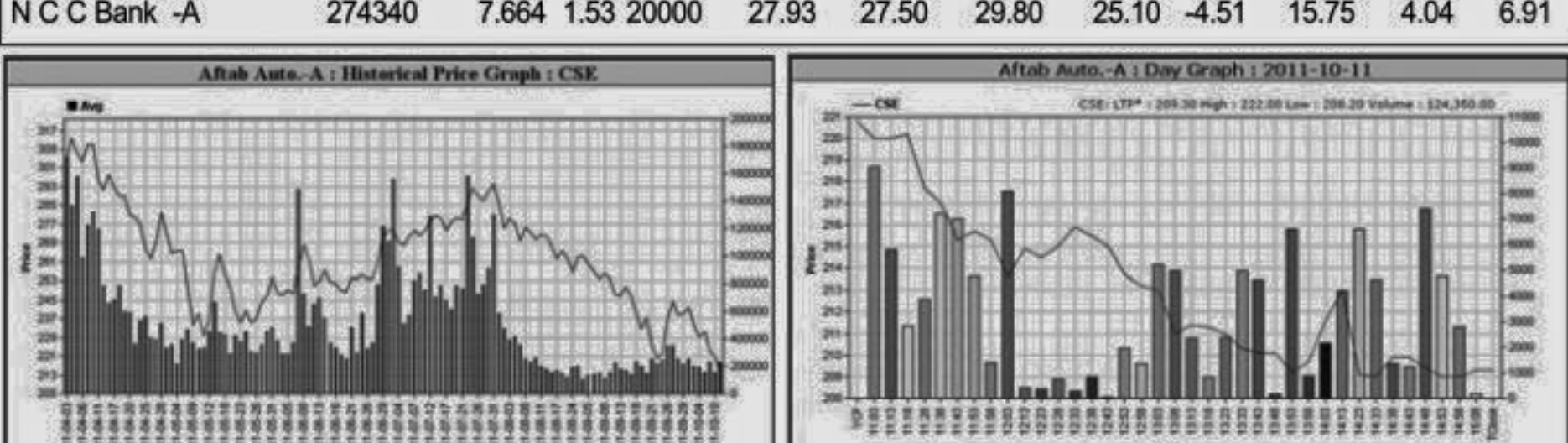


Chittagong Stock Exchange

Company	Vol.	Value	% of Total	Big Lot	Avg. Close	DayHi	DayLo	Chn%	Per S	EPS	PE
BEXIMCO Ltd. -A	311288	42,085.83	3000	135.19	132.40	141.90	115.00	-5.70	49.26	19.28	7.01

Chittagong Stock Exchange

Company	Vol.	Value	% of Total	Big Lot	Avg. Close	DayHi	DayLo	Chn%	Per S	EPS	PE	
Grameenphone-A	193,214	9.57	143.09	-3.18	147.79	148.1	140.3	140.7	-4.61	27.07	7.93	18.04



Sectoral Turnover Summary

Sector	DSE		CSE		Total	
	Mill. (Tk.)	%	Mill. Tk.	%	Mill. Tk.	%
Bank	688.16	20.49	132.73	24.94	820.89	21.09
NBFI	260.27	7.75	43.99	8.26	304.25	7.82

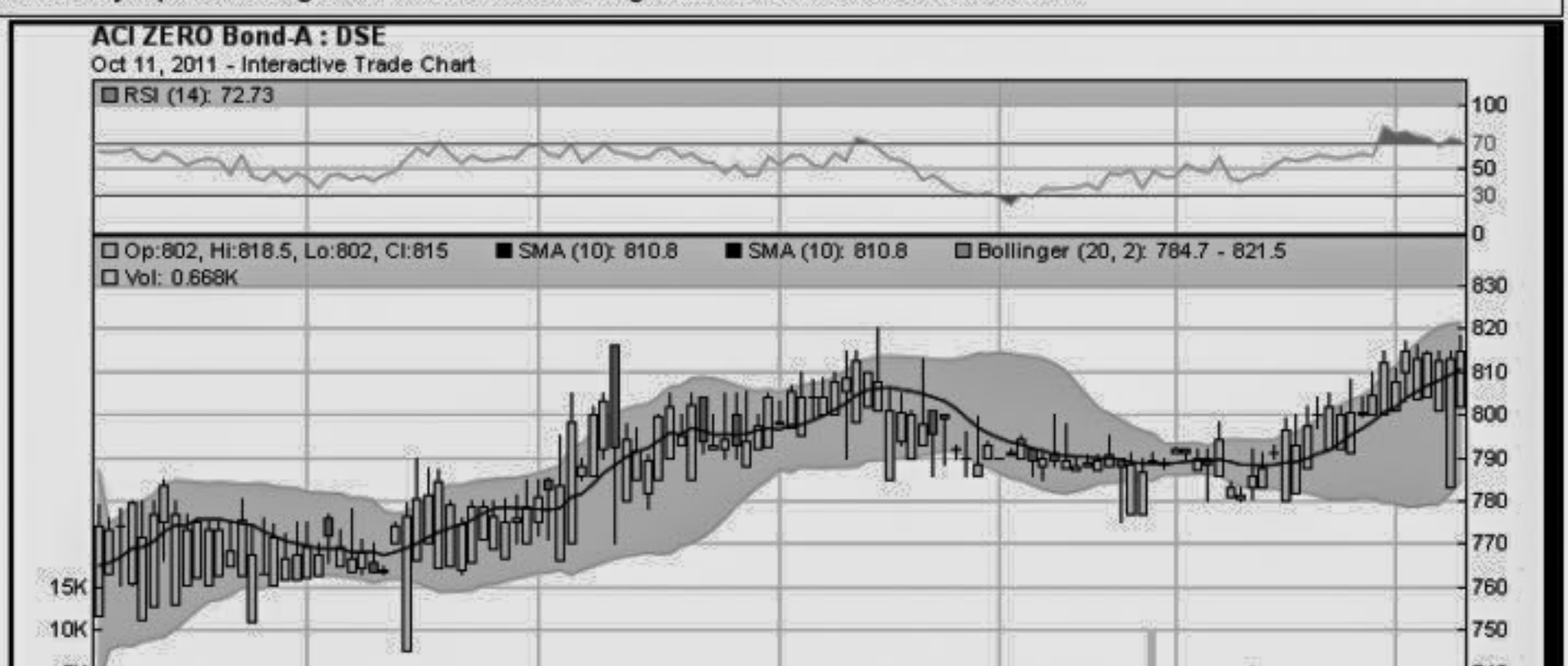
When to buy or sell

Investors follow many calculations of corporate performance when deciding if a stock is undervalued or overvalued. These range from the simple price-earnings ratio, or P/E, to far more technical ways of attempting to discern whether a stock is trending up or down. Here are some of the most common.

RSI (Relative Strength Index): A technical momentum indicator that compares the size of recent gains to recent losses, in an attempt to determine overbought and oversold conditions of an asset. Stocks with more or strong gains have a higher RSI than stocks that had more or stronger losses. **SMA (Simple Moving Average):** A simple, or arithmetic, moving average is the average stock price over a certain period of time. It adds up the closing price of the security for a given period and then divides the total by the number of intervals. Short-term averages respond quickly to changes in the price of the stock, so appear less steady, while long-term averages are slow to react. **EMA (Exponential Moving Average):** A type of moving average that is similar to a simple moving average, except that more weight is given to the latest data. The exponential moving average is also known as "exponentially weighted moving average". **Bollinger Band:** A band that provides a relative definition of high and low, it was developed by famous technical trader John Bollinger. By definition, prices are high at the upper band and low at the lower band. The band usually plots two standard deviations away from a simple moving average. Because the standard deviation is a measure of volatility, the bands adjust themselves to market conditions. When the markets become volatile, the bands widen (move further away from the average); during less volatile periods, the bands contract. The closer the prices move to the upper band, the more overbought the market, and the closer the prices move to the lower band, the more oversold the market. **MACD (Moving Average Convergence Divergence):** A trend-following momentum indicator that shows the relationship between two moving averages of prices. It is used to spot changes in the strength, direction, momentum, and duration of a trend in a stock's price. **Divergence:** This happens when a security's price diverges from the MACD. It signals the end of the current trend.

Sectoral P/E & EPS

Sector	P/E		EPS(%)	
	DSE	CSE	DSE	CSE
Bank	9.02	8.97	46.25	46.25
NBFI	19.02	19.19	44.24	44.41



All the above PE and EPS are estimated to get a relative idea only and not calculated by any of the stock exchanges.

Prepared exclusively for Daily Star by Business Information Automation Service Line (BIASL), on the basis of information collected from daily stock quotations and audited reports of the listed companies. High level of caution has been taken to collect and present the above information and data. The publisher will not take any responsibility if any body uses this information and data for his/her investment decision. For any query please email to biasl@bol-online.com or call 01552153562 or go to www.biasl.net

Notes: Capital Gainer / Loser tables are prepared on the basis of the close price change of the traded issues. "Close" or "C.Price" or "D Clo." is the Closing Price of the day. "Chn %" indicates the price difference in percentage. "Avg" prices indicate weighted average prices of all transactions of the day. "DayHi"/"D Hi" and "DayLo"/"D Lo" indicate the highest and lowest transacted price of the day. "Yr.Hi" and "Yr. Lo" indicate the highest and lowest transacted price last one running year, everyday the range moves by one. "P Day"=Previous Day. EPS is based on available latest audited accounts of the companies. ZERO & Book value per share are diluted at bookclosing date whenever it is applicable. Only the positive earning companies are considered in calculating the PER and EPS of the Sectors and Stock Exchanges.