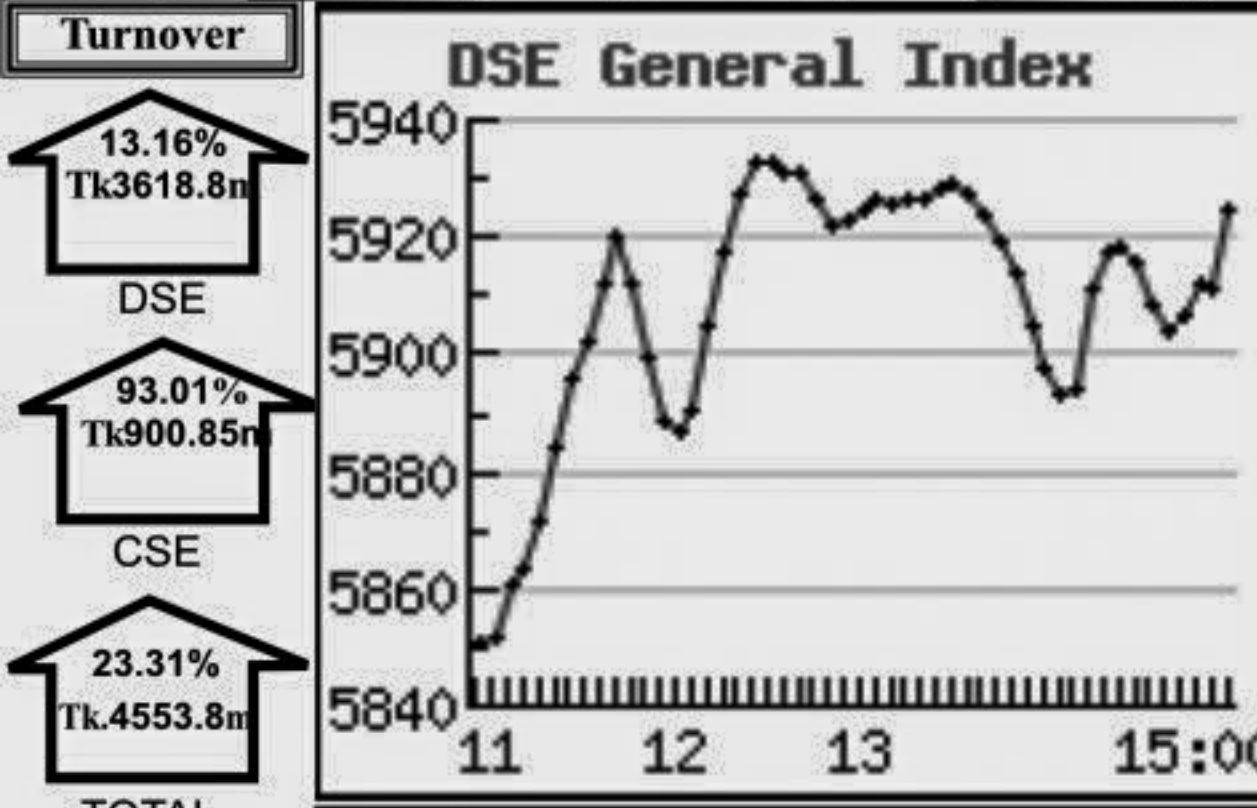


Capital Market Highlights: September 29, 2011

INDEX		
All Share	DSE General	DSE 20
4944.96371 (+) 0.95%	5910.20259 (+) 1.01%	4080.04914 (+) 1.01%

CSE		
All Share	CSE CSCX	CSE 30
16668.9449 (+) 0.58%	10679.4063 (+) 0.62%	14709.1265 (+) 0.40%

Turnover		
DSE	CSE	TOTAL
13.16% Tk3618.8bn	93.01% Tk900.85bn	23.31% Tk4553.8bn
0.88% Tk2306.4i	0.72% Tk2269.2i	



Key Features - September 29, 2011			
Indicators	DSE	CSE	TOTAL
Turnover (Million Taka)	3,618.78	900.85	4,519.64
Turnover (Volume)	38,328,207	7,913,416	46,241,623
No. of Contract	90,844	18,770	109,614
Traded Issues	258	179	258
Issue Gain (Avg. Price Basis)	197	124	197
Issue Loss (Avg. Price Basis)	56	53	56
Unchanged Issue (Avg. Price Basis)	5	5	5
Market Cap. Equity (Billion Tk.)	2,306.43	2,269.16	2,306.43
Market Cap. Equity (Billion US\$)	33.67	33.13	33.67

Combined Turnover Leaders

Company	Volume (Share)	Value (M. Taka)	% of Total	Average Price
City Bank - A	758703	443.21	9.81	584.17
LafargeS Cement-Z	423350	263.57	5.83	622.58
Beximco Pharma -A	2063329	220.48	4.88	106.85
Summit Power -A	2126952	198.71	4.40	93.43
BEXIMCO Ltd. -A	995371	153.28	3.39	153.99
Keya Cosmetics -A	1669140	144.01	3.19	86.28
UCBL - A	2440117	117.86	2.61	48.33
M.I. Cement-N	528000	89.76	1.99	170.01
Malek Spinning-A	1479000	88.68	1.96	59.96
Square Pharma -A	32598	85.90	1.90	2635.08
Grameenphone-A	520552	85.53	1.89	164.31
Khulna Power-A	1077886	77.16	1.71	71.58
MJL BD Ltd.-N	552100	75.28	1.67	136.35
Titas Gas TDCLA	84695	68.46	1.51	808.34
Aftab Auto.-A	282002	67.60	1.50	239.71
CMC Kamal Tex. -A	1314792	67.39	1.49	51.25
People's Leasing-A	686627	63.65	1.41	92.7
R. N. Spinning-A	716105	62.13	1.37	86.77
Fu-Wang Food A	939000	57.95	1.28	61.71
UNITED AIR-B	1740895	50.16	1.11	28.82
Golden Son -A	604800	45.64	1.01	75.47
One Bank -A	81225	42.48	0.94	523.05
Social Islami. B-A	1637239	42.30	0.94	25.84
Beximco Syn.-A	84852	41.59	0.92	490.1
Jamuna Oil -A	155900	40.93	0.91	262.57
Maksons Spinning-A	938500	38.12	0.84	40.62
National Bank - A	578360	37.75	0.84	65.26
LankaBangla Fin. -A	191518	36.69	0.81	191.59
Pharma Aids A	9720	34.62	0.77	3561.21
S. Alam CR Steel -A	50353	33.87	0.75	672.56

Sectoral Turnover Summary

Sector	DSE		CSE		Total	
	Mill. (Tk.)	%	Mill. Tk.	%	Mill. Tk.	%
Bank	562.19	15.54	530.21	56.70	1092.41	23.99
NBFI	235.23	6.50	38.16	4.08	273.39	6.00
Investment	103.32	2.85	8.99	0.96	112.31	2.47
Engineering	273.37	7.55	39.21	4.19	312.58	6.86
Food & Allied	111.68	3.09	7.10	0.76	118.78	2.61
Fuel & Power	462.43	12.78	55.39	5.92	517.81	11.37
Jute	13.05	0.36	34.22	3.66	47.27	1.04
Textile	378.20	10.45	34.22	3.66	412.42	9.06
Pharma & Chemical	539.77	14.92	43.46	4.65	583.23	12.81
Paper & Packaging	1.08	0.03	0.47	0.05	1.55	0.03
Service	57.63	1.59	12.46	1.33	70.09	1.54
Leather	9.75	0.27	1.16	0.12	10.91	0.24
Ceramic	71.09	1.96	9.69	1.04	80.78	1.77
Cement	331.63	9.16	56.86	6.08	388.49	8.53
Information Technology	18.00	0.50	3.46	0.37	21.47	0.47
General Insurance	137.82	3.81	12.88	1.38	150.70	3.31
Life Insurance	33.83	0.93	0.74	0.08	34.57	0.76
Telecom	78.67	2.17	6.86	0.73	85.53	1.88
Travel & Leisure	39.91	1.10	10.26	1.10	50.16	1.10
Miscellaneous	156.30	4.32	29.03	3.10	185.33	4.07
Debtenture	3.85	0.11	0.24	0.03	4.09	0.09

Sectoral P/E & EPS

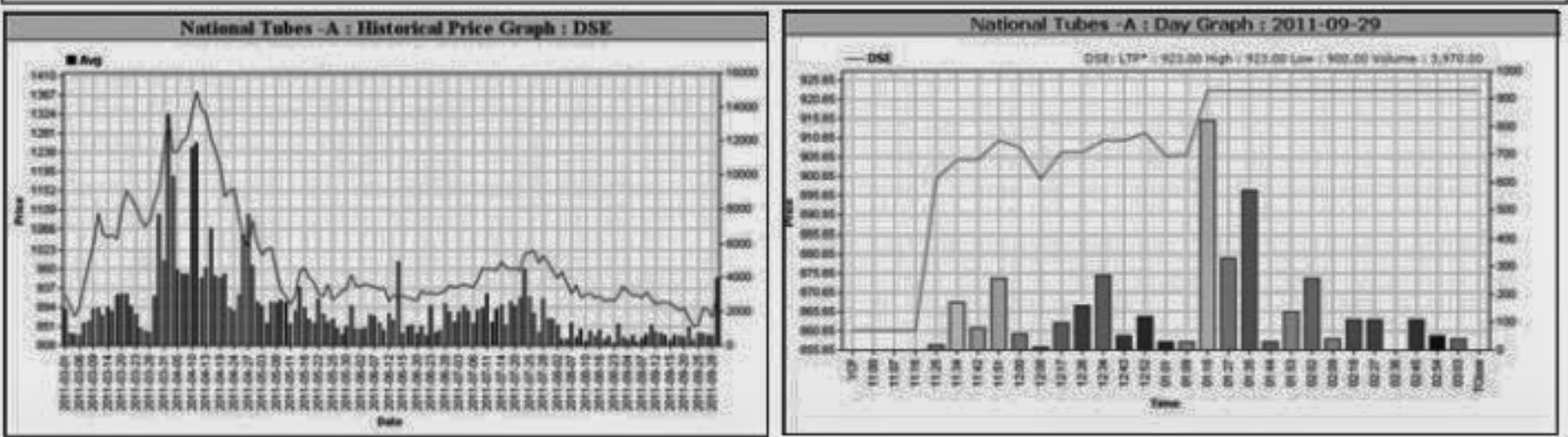
Sector	P/E		EPS(%)	
	DSE	CSE	DSE	CSE
Bank	10.05	10.05	46.25	46.25
NBFI	21.64	21.76	46.69	47.00
Investment	16.06	16.62	31.79	31.79
Engineering	30.74	31.54	40.02	37.69
Food & Allied	15.98	15.47	140.48	153.59
Fuel & Power	21.53	21.23	43.05	43.04
Textile	14.19	14.60	29.90	29.92
Pharma. & Chemical	27.93	27.12	66.30	56.74
Paper & Printing	30.68	31.36	12.41	13.27
Service	13.12	13.15	64.01	64.01
Leather	16.08	16.36	104.33	129.27
Ceramic	36.08	36.04	21.06	21.06
Cement	27.06	26.89	68.64	68.64
IT	27.20	27.21	11.54	11.54
General Insurance	19.50	19.09	38.17	38.94
Life Insurance	47.06	47.87	74.55	74.55
Telecom	20.72	20.70	79.30	79.30
Travel & Leisure	14.96	21.28	17.17	13.55
Miscellaneous	9.40	9.35	156.08	151.01
Stock Exchanges	15.76	15.58	47.95	47.66

All the above PE and EPS are estimated to get a relative idea only and not calculated by any of the stock exchanges.

Prepared exclusively for Daily Star by Business Information Automation Service Line (BIASLI), on the basis of information collected from daily stock quotations and audited reports of the listed companies. High level of caution has been taken to collect and present the above information and data. The publisher will not take any responsibility if any body uses this information and data for his/her investment decision. For any query please email to biasli@bol-online.com or call 01552153562 or go to www.biasli.net

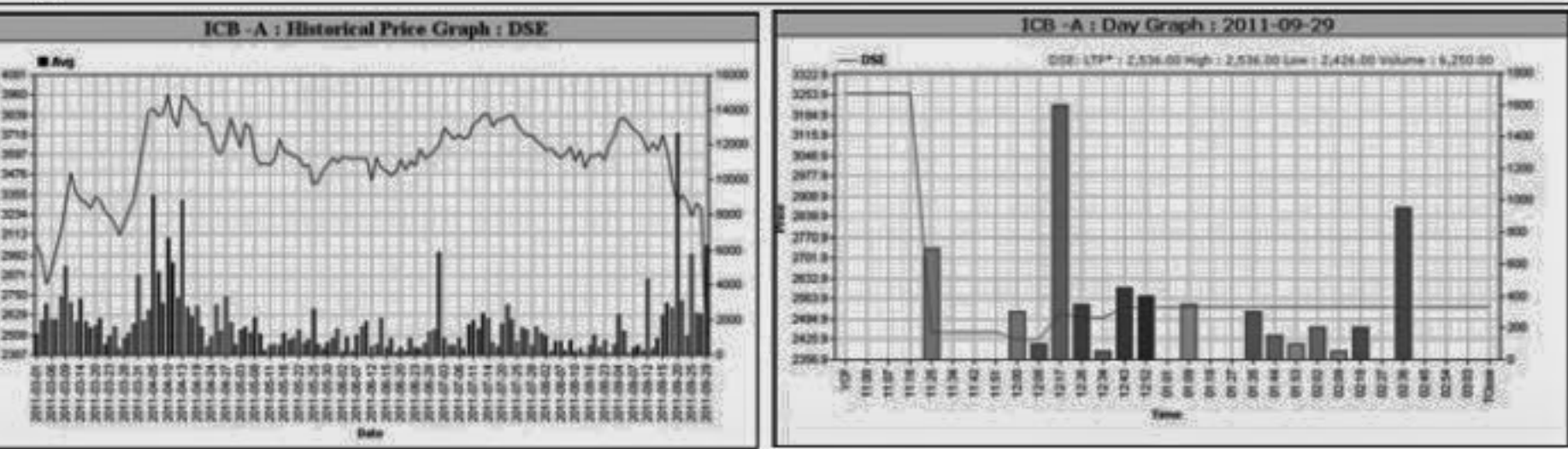
Capital Gainers

Dhaka Stock Exchange														
Company	Price Chn. (%)		Price Scale				Turnover		BookV		EPS		PE	
	Close	Avg.	Avg.	Close	DayHi	DayLo	Yr Hi	YrLo	M.Tk	Per S	EPS	PE	M.Tk	Per S
National Tubes -A	7.23	5.27	916.37	923.00	923.00	900.00	2100.00	824.0	3.638	297.85	35.7	25.67		
MBL 1st M. F-A	7.14	4.12	8.85	9.00	9.00	7.70	11.0	7.1	0.208	0	0	-		
EBL NRB M.F-A	6.82	8.64	9.56	9.40	9.60	9.20	10.6	8.0	0.043	0	0	-		
Mithun Knitting -A	6.24	5.53	1,415.80	1,425.75	1,425.75	1,349.00	2,557.8	6,600.0	10.845	174.54	39.3	36.03		
Usmania Glass -A	6.24	5.81	1,469.99	1,480.25	1,480.25	1,415.00	2,900.0	1,150.0	5.864	355.35	17.73	82.91		
Jute SpinnersA	6.21	6.19	1,660.49	1,663.00	1,663.50	1,608.00	2,540.0	1,000.0	1.345	528.94	37.33	44.48		
Samata Leather-Z	6.02	6.47	198.75	198.00	202.00	193.50	364.5	118.0	0.159	52.4	-2.51	-79.18		
Ocean Containers-A	5.84	6.91	92.18	92.40	94.50	88.00	158.9	66.0	17.094	40	2.14	43.07		
BSC-A	5.69	5.11	1,805.41	1,811.00	1,813.25	1,764.75	3,802.0	1,620.0	0.334	1014.3	66.71	27.06		
Khulna Power-A	5.69	3.66	71.75	72.40	73.00	68.90	142.0	54.2	53.331	12.57	2.25	31.89		



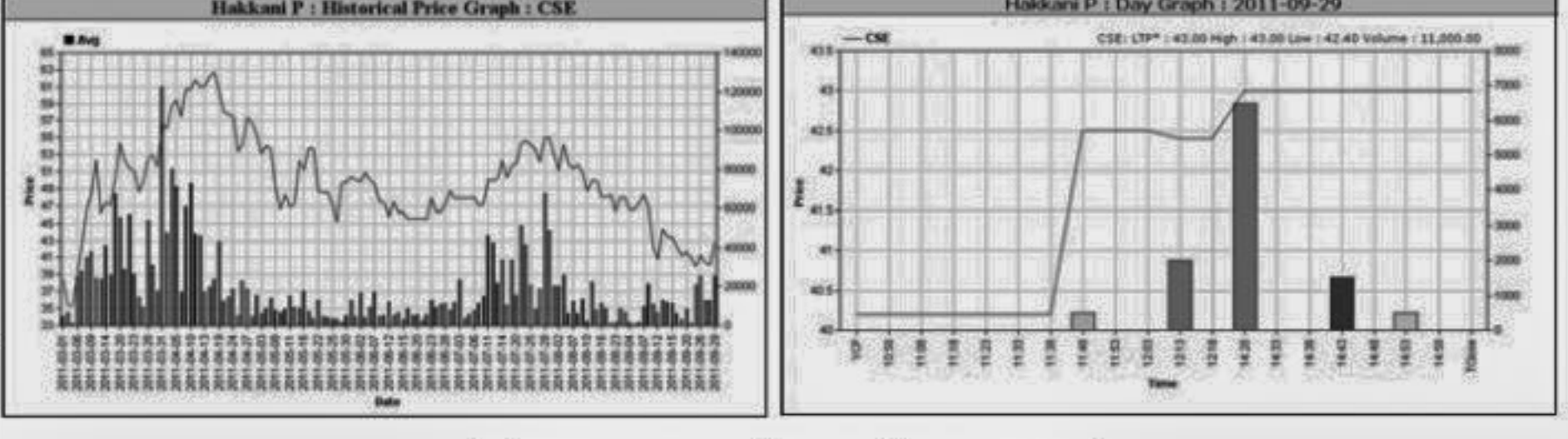
Capital Losers

Dhaka Stock Exchange														
Company	Price Chn. (%)		Price Scale				Turnover		BookV		EPS		PE	
	Close	Avg.	Avg.	Close	DayHi	DayLo	Yr Hi	YrLo	M.Tk	Per S	EPS	PE	M.Tk	Per S
ICB -A	-22.23	-23.27	2508.39	2536.00	2536.00	2426.00	5150.0	2426.0	15.708	764.16	114.23	21.96		
Phoenix Fin. 1st MF-A	-3.53	-1.42	8.36	8.20	8.60	8.20	17.5	7.8	3.647	56.00	11.33	13.33	6.29	
Meghna PET Ind. -Z	-2.99	-2.69	16.25	16.20	16.60	15.90	33.0	14.1	0.065	0.2	-1.64	-9.91		
Al-Haj Textile -Z	-2.94	-2.18	56.15	56.10	57.90	56.00	91.0	45.0	0.356	32.8	-2.28	-24.63		
6th ICB M F-A	-2.15	-2.42	669.29	671.75	680.00	660.00	919.0	550.0	7.322	267.31	105.77	6.33		
ICB AMCL 1st M F-A	-1.96	-1.96	525.25	525.25	525.25	525.25	849.0	483.3	0.026	217.55	73.8	7.12		
3rd ICB M F-A	-1.85	-1.91	2483.87	2508.25	2680.00	2451.00	2680.0	1851.0	0.770	589.1	248.34	10.00		
I P D C -A	-1.68	-0.76	397.04	394.50	402.75	391.00	500.0	332.3	4.425	208.63	14.01	28.34		
Dulamia CottonZ	-1.55	-3.07	307.20	302.25	315.00	301.25	915.3	161.0	0.811	-173.12	-8.32	-36.92		
LafargeS Cement-Z	-1.52	0.03	623.38	614.00	631.50	611.00	786.8	321.0	227.969	72.83	-9.02	-69.11		



Chittagong Stock Exchange

Chittagong Stock Exchange														
Company	Price Chn. (%)		Price Scale				Turnover		BookV		EPS		PE	
	Close	Avg.	Avg.	Close	DayHi	DayLo	Yr Hi	YrLo	M.Tk	Per S	EPS	PE	M.Tk	Per S
Hakkani P & Paper -B	7.50	6.50	42.75	43.00	43.00	42.40	90.0	34.5	0.470	35.99	0.96	44.53		
Apex Foods -A	7.40	7.39	860.21	860.25	861.00	860.00	1530.0	711.0	0.163	697	18.93	45.44		
Phoenix Insur -A	6.59	3.04	93.33	97.00	97.00	92.20	1750.0	65.0	0.168	27.84	4.22	22.12		
BOC (BD) Ltd. -A	6.50	5.73	634.40	639.00	639.00	632.10	930.0	486.0	0.095	121.12	43.9	14.45		
Samata Leather-Z	6.38	6.33	199.90	200.00	205.50	192.00	345.0	121.5	0.050	52.4	-2.51	-79.64		
Ocean Containers-A	6.21	5.99	91.49	92.40	93.80	80.00	157.6	30.0	1.297	40	2.14	42.75		
BATBCL -A	5.95	4.20	595.00	605.00	605.00	590.00	822.0	536.0	0.089	104.01	47.98	12.40		
Mithun Knitting -A	5.78	5.78	1364.60	1364.50	1370.00	1350.00	2507.0	620.0	0.136	174.54	39.3	34.72		
Bangas -A	5.68	5.68	1846.77	1846.75	1847.50	1845.00	3625.0	950.0	0.120	134.45	14.61	126.40		
Quasem Drycells -A	5.29	5.31	90.37	91.60	92.00	87.50	199.0	60.2	1.645	22.53	1.74	51.94		



Chittagong Stock Exchange