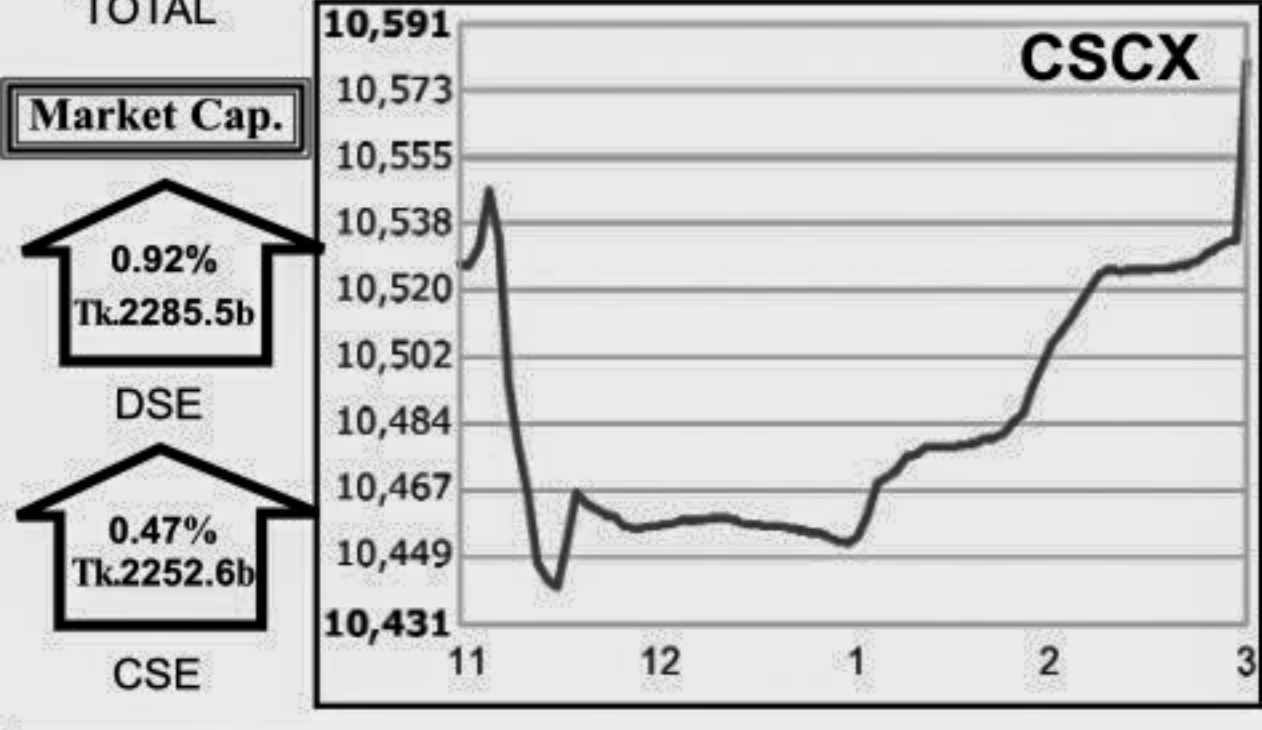
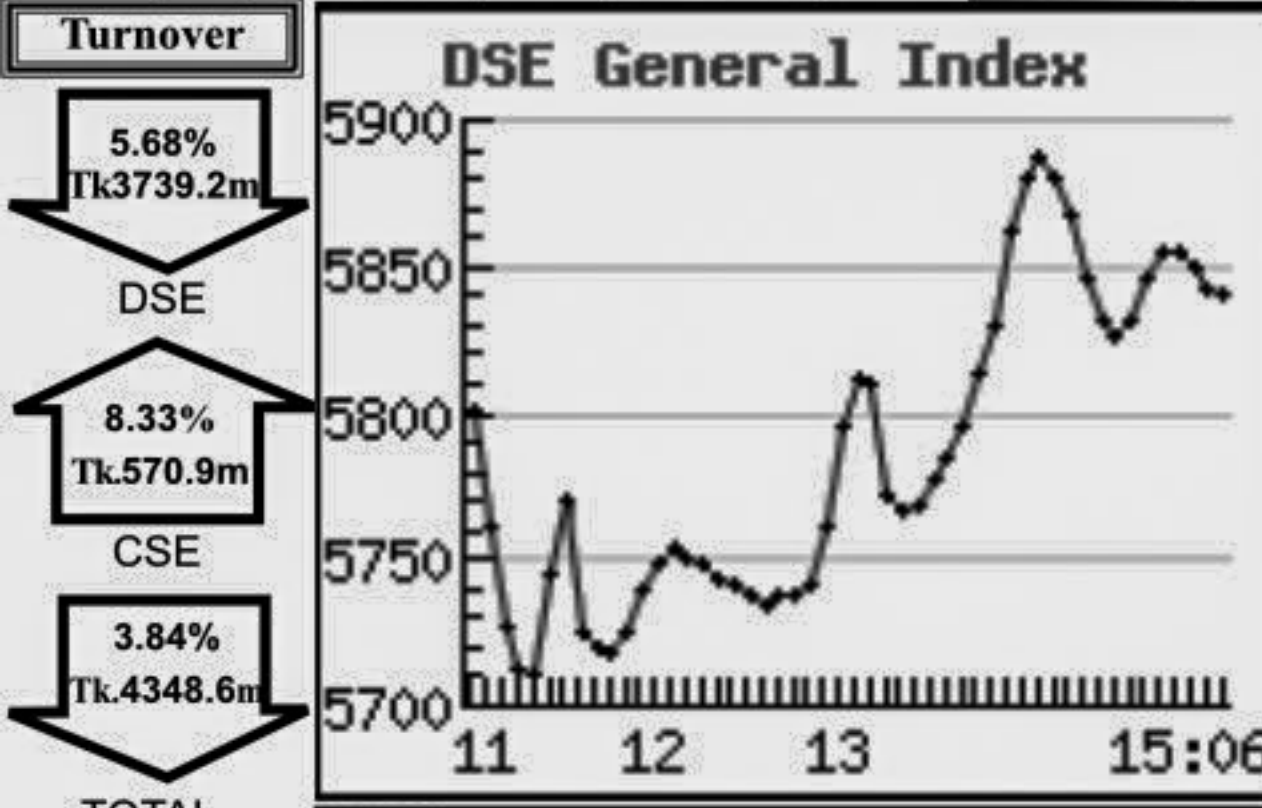


### Capital Market Highlights: September 19, 2011

INDEX					
All Share		DSE General		DSE 20	
DSE	4887.54938 (+) 0.72%	5841.20011 (+) 0.70%	4037.84941 (+) 0.77%		
All Share		CSE CSCX		CSE 30	
CSE	16513.6875 (+) 0.52%	10580.7392 (+) 0.50%	14652.3027 (+) 0.40%		

Turnover	
DSE	5.68% Tk3739.2m
CSE	8.33% Tk570.9m
TOTAL	3.84% Tk4348.6m



Market Cap.			
DSE	0.92% Tk2285.5b		
CSE	0.47% Tk2252.6b		

### Key Features - September 19

Indicators	DSE	CSE	TOTAL
Turnover (Million Taka)	3,739.19	570.94	4,310.13
Turnover (Volume)	45,123,289	8,153,594	53,276,883
No. of Contract	94,168	20,726	114,894
Traded Issues	256	179	256
Issue Gain (Avg. Price Basis)	58	40	58
Issue Loss (Avg. Price Basis)	195	138	195
Unchanged Issue (Avg. Price Basis)	3	1	3
Market Cap. Equity (Billion. Tk.)	2,285.46	2,252.59	2,285.46
Market Cap. Equity (Billion US\$)	33.36	32.88	33.36

### Combined Turnover Leaders

Company	Volume (Share)	Value (M. Taka)	% of Total	Average Price
BEXIMCO Ltd. -A	1328736	197.26	4.58	148.46
National Bank - A	2246277	144.01	3.34	64.11
CMC Kamal Tex. -A	2679530	135.06	3.13	50.4
Titas Gas TDCLA	1392320	111.53	2.59	801.03
M.I. Cement-N	678400	110.62	2.57	163.07
UCBL - A	2217962	109.15	2.53	49.21
Beximco Pharma -A	929334	93.46	2.17	100.56
One Bank - A	180163	93.05	2.16	516.45
Malek Spinning-A	1552500	92.06	2.14	59.3
MJL BD Ltd.-N	664900	89.37	2.07	134.41
Grameenphone-A	542634	88.03	2.04	162.23
Square Pharma -A	32640	86.46	2.01	2648.91
People's Leasing-A	958197	83.71	1.94	87.36
LafargeS Cement-Z	133250	78.91	1.83	592.18
Aftab Auto.-A	336063	78.21	1.81	232.73
City Bank - A	134011	77.52	1.80	578.47
UNITED AIR-B	2655440	77.39	1.80	29.14
R. N. Spinning-A	886875	76.62	1.78	86.4
Southeast Bank-A	227708	69.93	1.62	307.1
Social Islami. B-A	2757444	69.53	1.61	25.21
LankaBangla Fin. -A	365640	62.62	1.45	171.25
Jamuna Oil - A	197720	52.04	1.21	263.22
Fu-Wang Food A	857900	51.73	1.20	60.29
Summit Power - A	606920	50.82	1.18	83.73
Islami Bank BD - A	93461	49.57	1.15	530.42
S. Alam CR Steel - A	72050	48.04	1.11	666.77
Golden Son - A	620500	45.52	1.06	73.36
Maksons Spinning-A	1123992	45.50	1.06	40.48
Intl. Leasing-A	76250	44.25	1.03	580.37
Grameen M F One-A	371500	40.58	0.94	109.24

### Sectoral Turnover Summary

Sector	DSE		CSE		Total	
	Mill. (Tk.)	%	Mill. Tk.	%	Mill. Tk.	%
Bank	948.52	25.37	181.55	29.79	1130.07	25.99
NBFI	342.85	9.17	66.56	9.28	399.41	9.18
Investment	160.01	4.28	13.12	2.15	173.13	3.98
Engineering	251.09	6.72	50.02	8.21	301.11	6.92
Food & Allied	76.52	2.05	7.73	1.27	84.25	1.94
Fuel & Power	380.40	10.17	35.55	5.80	415.95	9.56
Jute	2.50	0.07	38.56	6.33	41.06	0.94
Textile	449.46	12.02	38.56	6.33	488.02	11.22
Pharma & Chemical	291.32	7.79	36.09	5.92	327.41	7.53
Paper & Packaging	0.13	0.00	0.04	0.01	0.17	0.00
Service	23.22	0.62	6.61	1.08	29.83	0.69
Leather	24.41	0.65	0.10	0.02	24.51	0.56
Ceramic	65.49	1.75	16.69	2.41	82.18	1.84
Cement	190.67	5.10	36.22	5.94	226.89	5.22
Information Technology	16.41	0.44	3.45	0.57	19.86	0.46
General Insurance	150.40	4.02	10.27	1.69	160.67	3.69
Life Insurance	57.41	1.54	1.84	0.30	59.25	1.36
Telecom	75.03	2.01	13.00	2.13	88.03	2.02
Travel & Leisure	58.99	1.58	18.40	3.02	77.39	1.78
Miscellaneous	171.19	4.58	47.24	7.75	218.43	5.02
Debtenture	3.19	0.09	0.07	0.01	3.27	0.08

### Sectoral P/E & EPS

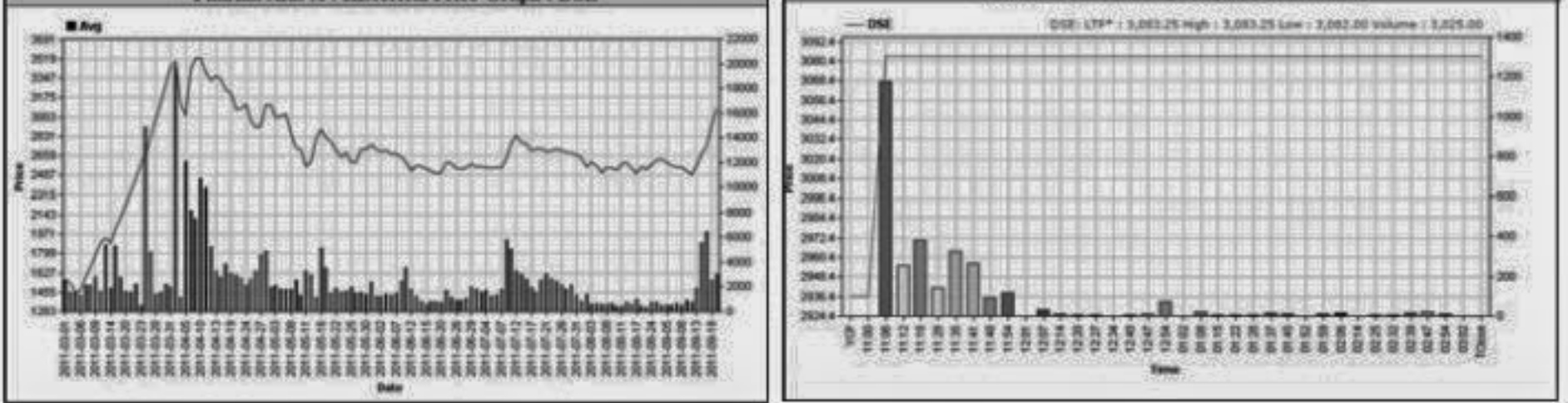
Sector	P/E		EPS(%)	
	DSE	CSE	DSE	CSE
e'vsK	9.98	9.98	46.25	46.25
GbweGdAvB	20.90	21.08	46.69	47.00
wewb'qvM	16.19	17.00	34.72	34.72
cO'KSkj	30.19	30.92	40.02	37.69
Lv' I Avbmvw'auK	15.28	14.76	140.48	153.59
R'vjvxb Ges kw3	21.03	20.94	43.05	43.04
e'j	13.96	14.43	29.90	29.92
Jla Ges imvqB	27.27	26.68	66.30	56.74
KvMR Ges Avbmvw'auK	30.19	30.27	12.41	13.27
fmev	12.14	12.26	64.01	64.01
Pvgov Ges Avbmvw'auK	15.79	15.97	104.33	129.27
wmivwK	35.15	35.12	21.06	21.06
wm'gU	26.43	26.20	68.64	68.64
Z' cOhyw	26.71	26.82	11.54	11.54
mvaviY exgv	18.99	19.10	38.17	38.94
Rxeb exgv	45.85	47.73	74.55	74.55
fUwjKg	20.45	20.49	79.30	79.30
agY Ges ch@Ub	15.11	21.52	17.17	13.55
wewa	9.09	9.09	156.08	151.01
+K G'pA	15.49	15.39	48.25	47.97

All the above PE and EPS are estimated to get a relative idea only and not calculated by any of the stock exchanges.

Prepared exclusively for Daily Star by Business Information Automation Service Line (BIASL) on the basis of information collected from daily stock quotations and audited reports of the listed companies. High level of caution has been taken to collect and present the above information and data. The publisher will not take any responsibility if any body uses this information and data for his/her investment decision. For any query please email to biasl@bol-online.com or call 01552153562 or go to www.biasl.net

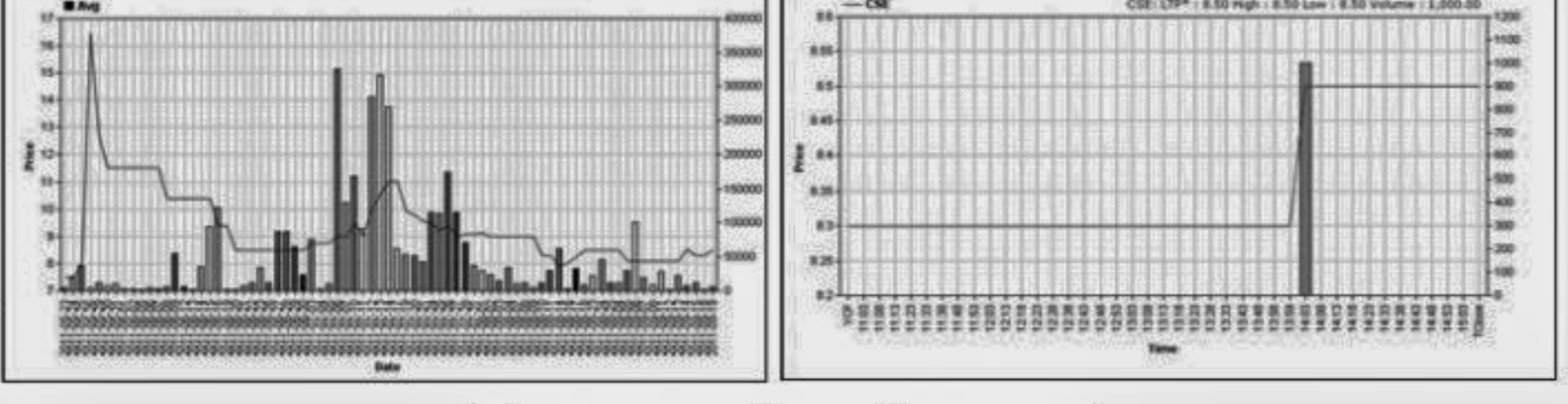
### Capital Gainers

Company	Price Chn. (%)		Price Scale						Turnover	BookV	M.Tk	Per S	EPS	PE
	Close	Avg.	Avg.	Close	DayHi	DayLo	Yr Hi	YrLo						
	MBL 1st M. F.-A	5.33	5.33	7.90	7.90	7.90	7.90	11.0						
Pharma Aids A	5.00	5.02	3,083.31	3,083.25	3,083.25	3,082.00	2500.0	1408.0	9.327	208.86	16.01	192.59		
Progressive Life-A	4.95	4.94	2,000.00	2,000.00	2,000.00	2,000.00	3939.0	1900.0	0.300	260.53	17.48	114.42		
LankaBangla Fin. -A	4.65	1.66	171.36	175.40	176.90	164.60	570.0	156.7	56.658	21.5	4.21	40.70		
Sinobangla Indu.-A	4.12	0.72	44.72	45.50	46.60	43.40	94.9	39.1	10.061	21.17	1.19	37.58		
Ambee Pharma -A	4.00	2.56	436.28	441.80	450.00	426.00	843.0	266.1	9.489	21.4	3.68	118.55		
Savar Refractories-Z	3.94	1.55	701.64	712.00	719.75	674.00	1425.3	411.0	0.214	114.21	5.56	126.19		
Prime Insur -A	3.92	0.43	67.42	69.00	72.00	63.00	1950.0	58.6	4.770	12.33	3.11	21.68		
Reckitt Benckiser -A	3.49	9.00	1,069.82	1,066.70	1,091.10	980.00	1555.0	760.0	8.826	43.13	26.71	40.05		
MJL BD Ltd.-N	3.49	0.63	134.50	136.30	137.80	130.10	198.6	130.0	75.443	18.84	3.15	42.70		



### Chittagong Stock Exchange

Company	Vol.	Value	% of Total	Average Price
S.B. 1st M. F.-A	6.25	2.41	8.50	8.50
Apex Tannery -A	5.79	0.58	1247.94	1293.00
Standard Insurance-A	5.21	3.90	499.43	505.00
Usmania Glass -A	5.07	5.04	1388.00	1388.00
LankaBangla Fin. -A	4.27	2.33	170.27	173.50
BOC (BD) Ltd. -A	4.10	3.42	635.00	635.00
Tallu Spinning-A	3.68	3.80	620.00	620.00
Imam Buton -A	3.65	3.29	362.25	362.25
Bangas -A	3.30	3.30	1565.00	1565.00
Ambee Pharma -A	3.10	2.08	430.98	435.80



### Turnover Leaders

Company	Vol.		Value		% of Total		Big Lot		Price Scale				C.Pts		BookV	
	Share	(M.Tk.)	Total	Lot	Avg.	Close	DayHi	DayLo	Chn%	Per S	EPS	PE	Per S	EPS	PE	
	BEXIMCO Ltd. -A	1013671	150,529	4.03	148.50	150.80	152.00	145.10	2.72	49.26	19.28	7.70				
CMC Kamal Tex. -A	2679530	135,055	3.61	50.40	50.50	51.60	49.10	1.41	34.91	1.92	26.25					
National Bank - A	1819077	116,742	3.12	64.18	64.80	65.20	62.60	-0.15	22.21	7.98	8.04					
Titas Gas TDCLA	134725	107,899	2.89	800.88	805.00	814.00	786.00	0.57	200.15	60.88	13.16					
M.I. Cement-N	571600	93,165	2.49	162.99	165.70	168.10	158.00	1.59	16.36	3.32	49.09					
One Bank -A	161763	83,508	2.23	516.24	522.25	527.25	507.00	1.02	152.55	59.19	8.72					
Beximco Pharma -A	809790	81,449	2.18	100.58	100.60	101.90	98.30	1.00	78.53	5.17	19.45					
UCBL - A	1653449	81,352	2.18	49.20	49.30	50.00	48.20	0.20	10.74	6	8.20					
Malek Spinning-A	1331500	78,899	2.11	59.26	59.80	61.20	57.30	2.75	35.64	1.51	39.25					
MJL BD Ltd.-N	560900	75,443	2.02	134.50	136.30	137.80	130.10	3.49	18.84	3.15	42.70					
Grameenphone-A	462634	75,031	2.01	162.18	163.50	165.80	159.80	1.30	27.07	7.93	20.45					
Square Pharma -A	27942	74,014	1.98	2658.00	2664.00	2626.25	0.57	499.53	95.61	27.70						
R. N. Spinning-A	847625	73,239	1.96	86.40	87.00	89.50	84.20	1.75	12.38	3.88	22.27					
City Bank - A	119186	68,948	1.84	578.49	580.75	590.75	563.50	1.40	227.87	45.65	12.62					
LafargeS Cement-Z	109150	64,640	1.73	592.21	601.25	606.50	577.00	1.86	72.83	-9.02	-65.66					
People's Leasing-A	720397	62,819	1.68	87.20	87.50	91.60	85.80	-2.45	17.69	5.41	16.12					
UNITED AIR-B	2024140	58,985	1.58	29.14	29.50	29.80	28.40	2.43	10.49	1.35	21.59					
Social Islami. B-A	2277533	57,503	1.54	25.25												