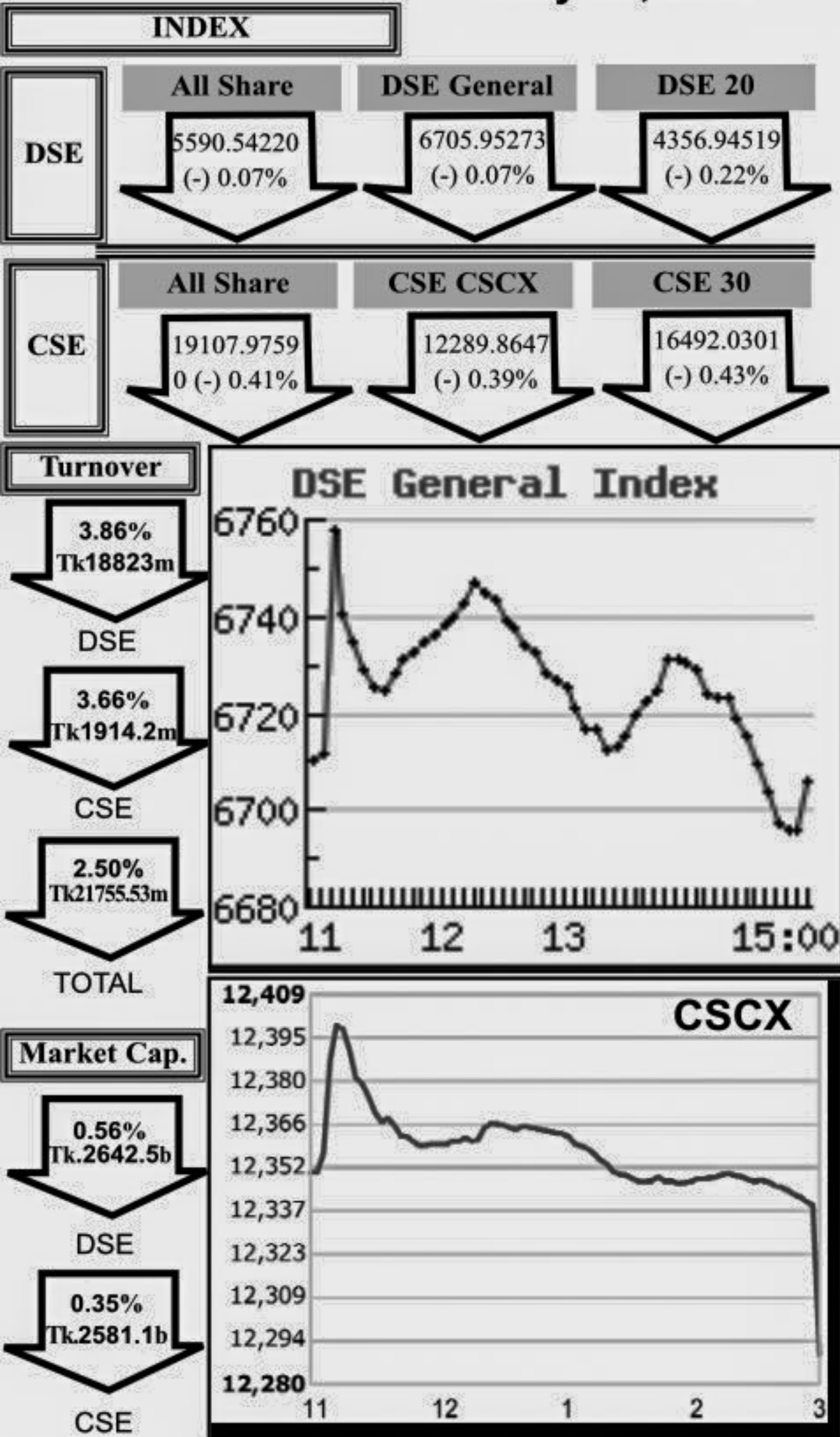


### Capital Market Highlights: July 25, 2011



### Key Features - July 25

Indicators	DSE	CSE	TOTAL
Turnover (Million Taka)	18,823.48	1,914.19	20,737.67
Turnover (Volume)	196,334,950	24,261,620	220,596,570
No. of Contract	325,267	54,064	379,331
Traded Issues	263	204	263
Issue Gain (Avg. Price Basis)	108	82	108
Issue Loss (Avg. Price Basis)	153	122	153
Unchanged Issue (Avg. Price Basis)	2	-	2
Market Cap. Equity (Billion Tk.)	2,642.51	2,581.11	2,642.51
Market Cap. Equity (Billion US\$)	38.58	37.68	38.58

### Combined Turnover Leaders

Company	Volume (Share)	Value (M. Taka)	% of Total	Average Price
R. N. Spinning-A	6663270	750.91	3.62	112.69
People's Leasing-A	5509353	729.35	3.52	132.38
BEXIMCO Ltd. -A	3518251	687.44	3.32	195.39
Titas Gas TDCLA	769720	646.48	3.12	839.88
Grameenphone-A	2732000	566.32	2.73	207.29
BEXTE Ltd. -A	14139116	550.90	2.66	38.96
UNITED AIR-B	9496185	531.95	2.57	56.02
Aftab Auto-A	1350624	394.79	1.90	292.3
Malek Spinning-A	5444500	391.12	1.89	71.84
Maksons Spinning-A	7012184	390.27	1.88	55.66
National Bank - A	5195969	370.06	1.78	71.22
UCBL - A	6161217	368.02	1.77	59.73
M.I. Cement-N	1817200	367.06	1.77	201.99
One Bank - A	601080	363.09	1.75	604.06
Social Islami. B-A	10343925	315.24	1.52	30.48
MJL BD Ltd.-N	1613800	306.09	1.48	189.67
Fu-Wang Food A	4494400	292.71	1.41	65.13
Golden Son -A	3160850	270.94	1.31	85.72
Keya Cosmetics -A	2385680	267.72	1.29	112.22
City Bank - A	410159	259.09	1.25	631.68
Southeast Bank-A	705467	250.90	1.21	355.66
RAK Ceramics-A	2118485	248.00	1.20	117.07
Bank Asia - A	436781	241.52	1.16	552.96
Bay Leasing-A	199102	229.17	1.11	1151.02
Beximco Pharma -A	2079912	227.64	1.10	109.45
Premier Bank -A	5105690	218.86	1.06	42.87
BD. Thai Alum -A	264266	211.53	1.02	800.44
Eastern Bank - A	2930434	207.34	1.00	70.75
BSRM Steels-A	135386	199.50	0.96	1473.56
Square Textile -A	1241504	193.54	0.93	155.89

### Sectoral Turnover Summary

Sector	DSE		CSE		Total	
	Mill. (Tk.)	%	Mill. Tk.	%	Mill. Tk.	%
Bank	4259.68	22.63	462.70	21.25	4722.38	22.49
NBFI	2159.47	11.47	263.74	12.11	2423.21	11.54
Investment	567.24	3.01	50.58	2.32	617.81	2.94
Engineering	1429.27	7.59	159.89	7.34	1589.15	7.57
Food & Allied	410.82	2.18	44.27	2.03	455.08	2.17
Fuel & Power	1611.79	8.56	114.53	5.26	1726.32	8.22
Jute	2.83	0.02	263.30	12.09	266.13	1.27
Textile	2635.51	14.00	263.30	12.09	2898.82	13.80
Pharma & Chemical	1149.34	6.11	98.12	4.51	1247.46	5.94
Paper & Packaging	1.09	0.01	0.49	0.02	1.58	0.01
Service	160.76	0.85	18.51	0.85	179.28	0.85
Leather	39.61	0.21	1.83	0.08	41.44	0.20
Ceramic	462.69	2.46	78.78	3.62	541.47	2.58
Cement	658.73	3.50	70.18	3.22	728.91	3.47
Information Technology	83.50	0.44	18.63	0.86	102.13	0.49
General Insurance	1165.45	6.19	81.45	3.74	1246.90	5.94
Life Insurance	276.80	1.47	7.66	0.35	284.46	1.35
Telecom	509.16	2.70	57.16	2.63	566.32	2.70
Travel & Leisure	470.66	2.50	61.29	2.81	531.95	2.53
Miscellaneous	766.50	4.07	60.99	2.80	827.49	3.94
Debtenture	2.56	0.01	0.08	0.00	2.64	0.01

### Sectoral P/E & EPS

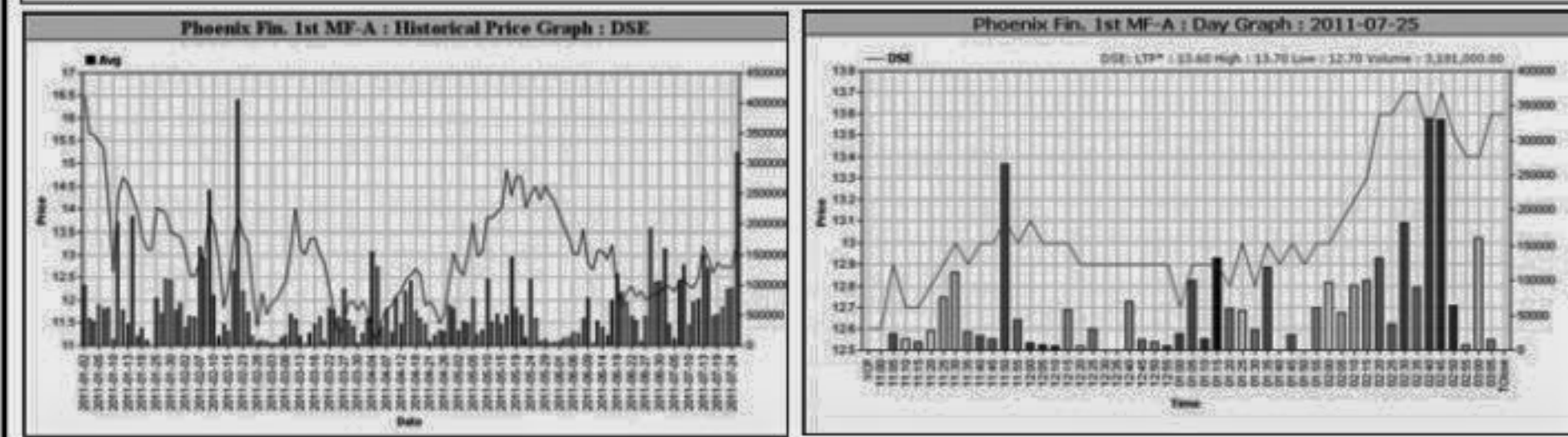
Sector	P/E		EPS(%)	
	DSE	CSE	DSE	CSE
Bank	11.70	11.69	46.25	46.25
NBFI	27.18	27.52	47.79	48.16
Investment	36.67	35.66	39.85	39.85
Engineering	35.32	36.42	40.17	37.83
Food & Allied	15.99	15.60	140.38	153.49
Fuel & Power	23.40	23.37	43.33	43.32
Textile	21.70	21.92	29.48	29.54
Pharma & Chemical	29.61	29.57	69.73	59.51
Paper & Printing	56.56	58.47	8.48	9.01
Service	14.95	14.96	64.01	64.01
Leather	16.57	16.38	109.75	136.03
Ceramic	44.00	44.20	20.67	20.67
Cement	31.00	30.98	68.64	68.64
IT	32.56	32.49	11.54	11.54
General Insurance	23.27	23.04	38.60	39.44
Life Insurance	53.60	53.53	81.04	81.04
Telecom	26.15	26.10	79.30	79.30
Travel & Leisure	25.47	37.66	18.54	14.90
Miscellaneous	8.74	8.69	208.62	199.77
Stock Exchanges	18.66	18.50	49.46	49.17

All the above PE and EPS are estimated to get a relative idea only and not calculated by any of the stock exchanges.

Prepared exclusively for Daily Star by Business Information Automation Service Line (BIASL) on the basis of information collected from daily stock quotations and audited reports of the listed companies. High level of caution has been taken to collect and present the above information and data. The publisher will not take any responsibility if any body uses this information and data for his/her investment decision. For any query please email to biasl@bol-online.com or call 01552153562 or go to www.biasl.net

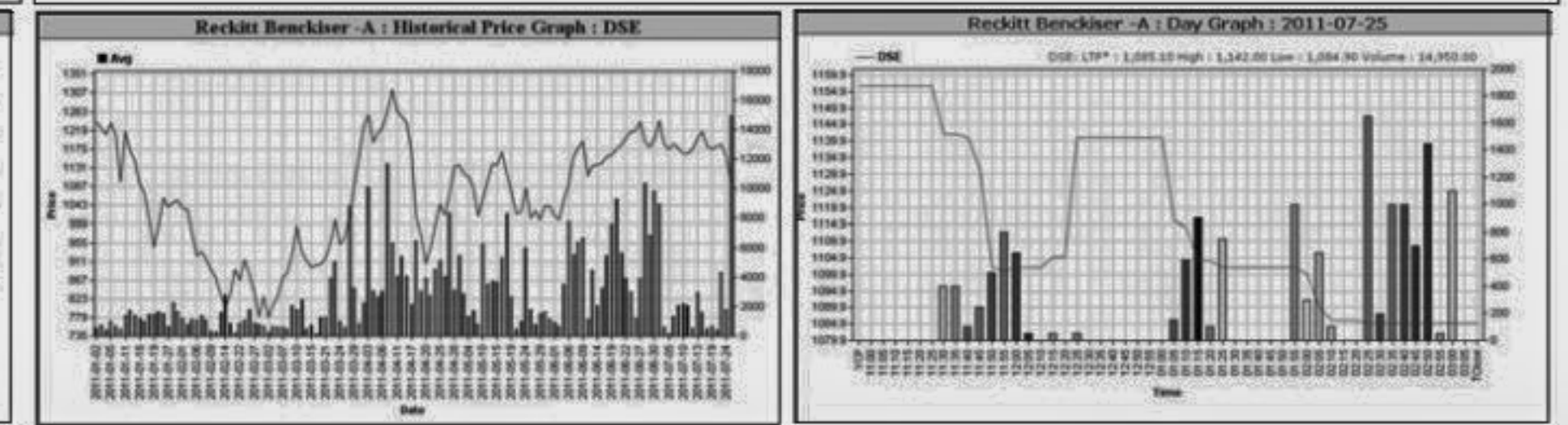
### Capital Gainers

Company	Price Chn. (%)		Price Scale				Turnover		BookV			
	Close	Avg.	Avg.	Close	DayHi	DayLo	Yr Hi	YrLo	M.Tk	Per S	EPS	PE
Phoenix Fin. 1st MF-A	7.94	4.33	13.26	13.60	13.70	12.70	17.5	10.8	42.187	10	0	-
National Housing Fin.-A	6.00	5.51	1,407.18	1,434.75	1,438.00	1,370.00	1,540.00	690.0	84.100	155.71	31.16	45.16
People's Leasing-A	5.84	4.62	132.42	134.10	135.50	127.10	142.18	103.5	626.806	17.69	5.41	24.48
Sinobangla Indu.-A	5.20	3.35	55.85	56.60	57.20	53.10	94.9	39.1	49.425	21.17	1.19	46.93
Safko Spinning-A	5.01	2.74	496.62	503.25	514.75	483.00	918.0	101.0	44.235	43.23	-5.16	-96.24
BSC-A	4.94	4.66	2,434.23	2,443.50	2,444.75	2,390.25	4,200.02	100.0	1.351	1014.3	66.71	36.49
Fu-Wang Food A	4.90	2.40	65.15	66.40	66.90	62.90	129.8	36.4	260.127	10.89	0.6	108.58
Mercantile Insur.-A	4.85	2.87	626.60	638.00	645.00	608.00	1749.0	462.8	103.819	143.47	18.47	33.93
Malek Spinning-A	4.82	4.00	71.84	71.80	73.20	68.70	117.5	49.5	369.108	35.64	1.51	47.58
Keya Cosmetics -A	4.74	2.59	112.22	112.80	114.00	108.10	168.0	64.0	256.426	19.11	3.01	37.28



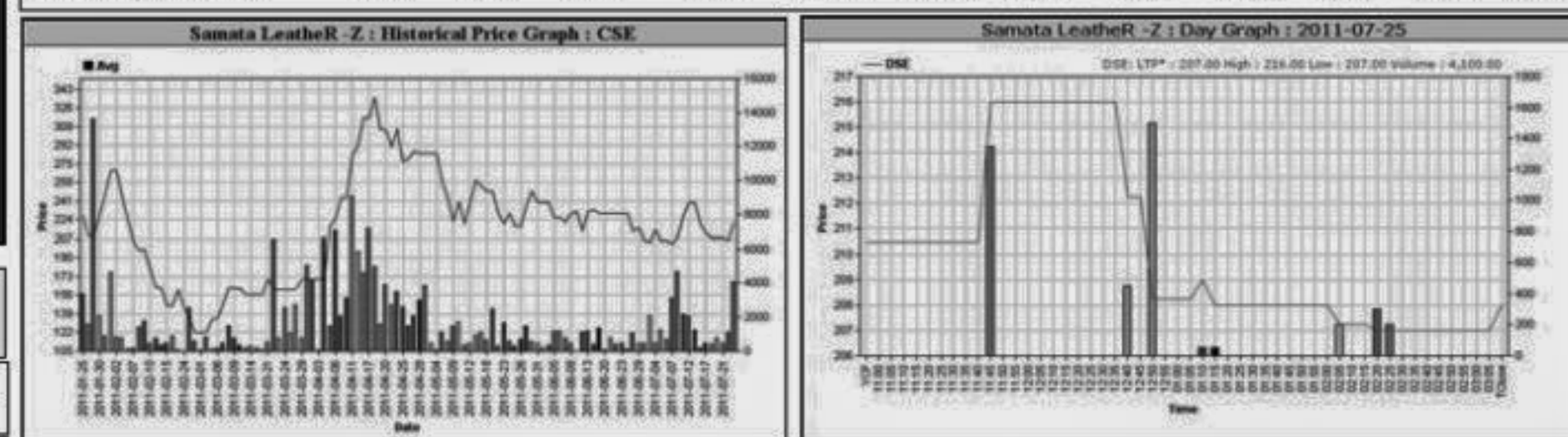
### Capital Losers

Company	Price Chn. (%)		Price Scale				Turnover		BookV			
	Close	Avg.	Avg.	Close	DayHi	DayLo	Yr Hi	YrLo	M.Tk	Per S	EPS	PE
Reckitt Benckiser -A	-6.18	-5.19	1098.26	1085.10	1125.00	1084.90	1555.0	760.0	16.419	43.13	26.71	41.12
RAK Ceramics-A	-5.46	-5.02	116.93	116.10	114.50	115.00	244.9	88.0	196.877	18.04	2.55	45.85
Grameen1.Scheme2 -A	-4.26	-2.83	29.87	29.20	31.00	29.10	35.0	18.5	68.602	12.7	1.2	24.89
MutualTrust Bank-A	-4.21	-3.30	452.26	443.50	468.00	440.25	825.0	308.0	86.043	172.16	38.86	11.64
Navana CNG-A	-3.82	-3.69	173.06	171.20	179.00	169.00	264.9	123.0	98.279	21.07	6.68	25.91
Aramit -A	-3.75	-2.56	460.49	456.80	468.90	452.00	650.0	276.4	14.897	74.61	9.67	47.62
7th ICB M F-A	-3.63	-3.63	1300.00	1300.00	1300.00	1300.00	1378.8	921.0	0.390	271.7	50	26.00
PrimeFin. 1st MF-A	-3.63	-4.04	24.20	23.90	24.80	23.70	44.6	17.0	7.721	26.31	2.83	8.55
Reliance1 M.F-A	-3.57	-2.04	11.04	10.80	11.30	10.80	15.0	10.3	0.784	0	0	-
ICB AMCL3rd NRB MF-A	-3.54	-3.83	11.06	10.90	11.40	10.90	15.8	8.4	12.727	10	0	-



### Chittagong Stock Exchange

Company	Price Chn. (%)		Price Scale				Turnover		BookV			
	Close	Avg.	Avg.	Close	DayHi	DayLo	Yr Hi	YrLo	M.Tk	Per S	EPS	PE
Samata Leather-R-Z	7.77	7.81	222.00	222.00	222.00	222.00	350.0	121.5	0.011	52.4	-2.51	-88.45
People's Leasing-A	6.35	4.41	132.16	134.00	135.00	127.00	1420.0	96.0	102.539	17.69	5.41	24.43
National Housing Fin.-A	6.16	6.46	1387.67	1395.00	1395.00	1372.00	1500.0	5.0	2.283	155.71	31.16	44.53
Mercantile Insur.-A	5.61	2.95	629.04	640.00	649.00	600.00	1772.0	455.0	11.598	143.47	18.47	34.06
Safko Spinning-A	5.37	3.63	504.43	510.00	521.00	494.00	905.0	100.0	3.581	43.23	-5.16	-97.76
Jamuna Oil -A	4.44	3.08	279.46	282.00	284.00	273.00	470.0	61.0	10.290	36.47	10.44	26.77
Alltex Industries-Z	4.35	4.15	241.60	240.00	248.00	230.00	361.5	110.5	3.213	100.76	-17.45	-13.61
Malek Spinning-A	4.35	3.95	71.83	72.00	72.90	69.30	118.0	50.1	22.015	35.64	1.51	47.57
Maksons Spinning-A	3.70	2.66	55.66	56.00	57.00	54.00	115.0	33.6	41.950	20.78	4.06	13.71
Sinobangla Indu.-A	3.64	3.60	56.37	57.00	58.00	54.00	99.0	39.2	1.550	21.17	1.19	47.37



### Chittagong Stock Exchange