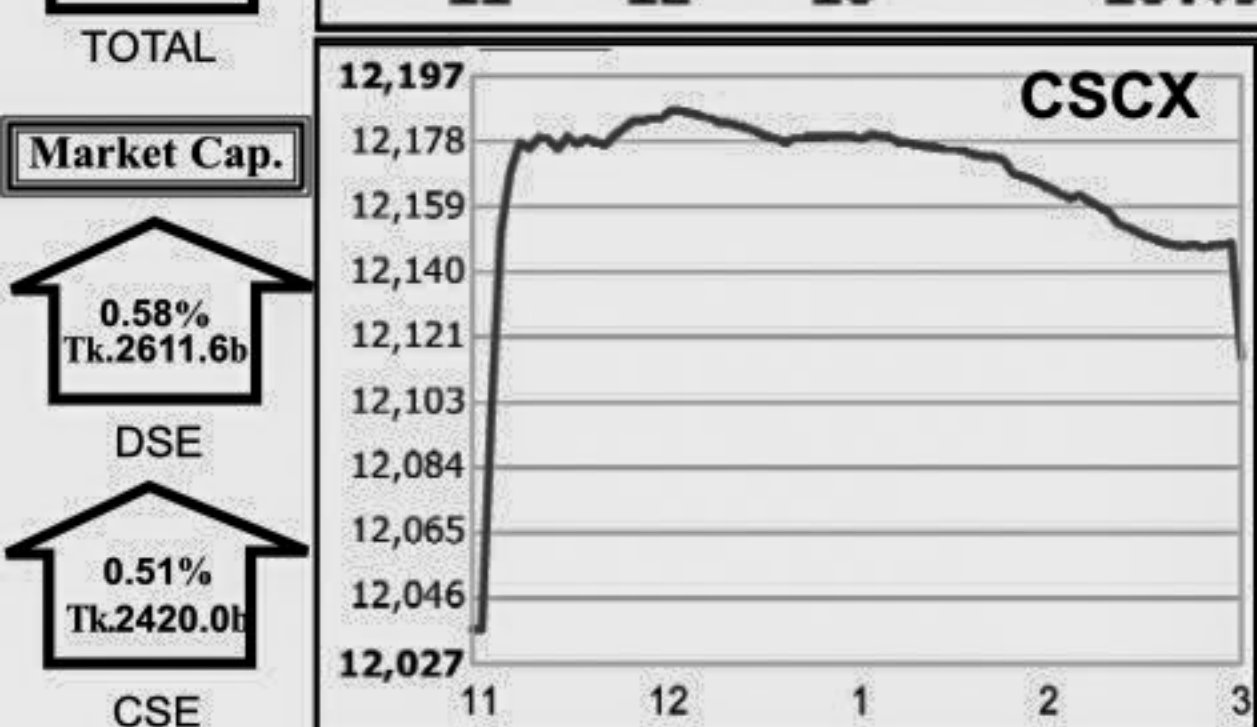
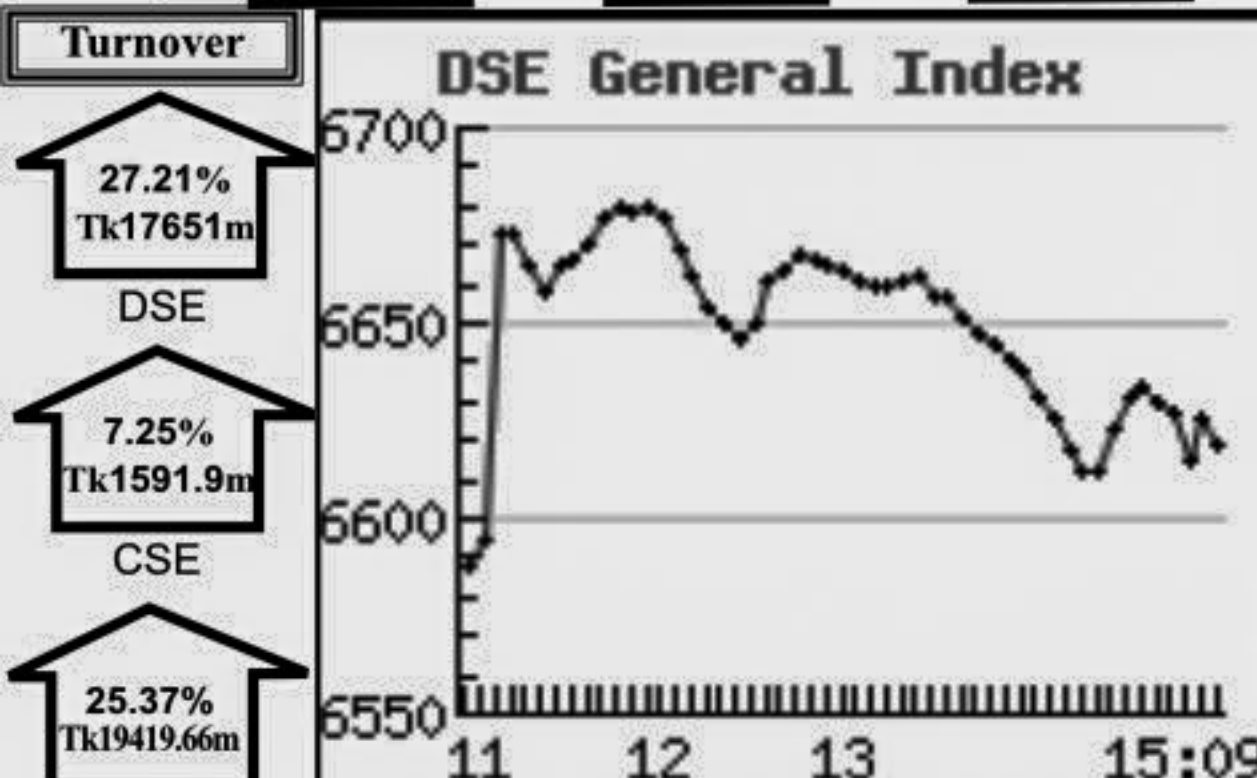


Capital Market Highlights: July 20, 2011

Table showing DSE and CSE indices: All Share, DSE General, DSE 20, CSE CSCX, CSE 30 with percentage changes.



Key Features - July 20

Table with indicators for DSE, CSE, and TOTAL: Turnover (Million Taka), Turnover (Volume), No. of Contract, Traded Issues, Issue Gain/Loss, Unchanged Issue, Market Cap. Equity.

Combined Turnover Leaders

Table listing top companies by volume and value: UNITED AIR-B, Grameenphone-A, One Bank -A, Social Islami, B-A, BEXIMCO Ltd., R. N. Spinning-A, M.L. Cement-N, UCBL -A, MJL BD Ltd.-N, City Bank -A, Square Pharma -A, First Lease-A, People's Leasing-A, National Bank -A, Maksons Spinning-A, Aftab Auto.-A, Intl. Leasing-A, BEXTEX Ltd.-A, Summit Power -A, Fu-Wang Food A, LankaBangla Fin. -A, Southeast Bank-A, Golden Son -A, Keya Cosmetics -A, Malek Spinning-A, Jamuna Bank -A, Premier Bank -A, Titas Gas TDCLA, BSRM Steels-A, Beximco Pharma -A.

Sectoral Turnover Summary

Table showing turnover for various sectors: Bank, NBFI, Investment, Engineering, Food & Allied, Fuel & Power, Jute, Textile, Pharma & Chemical, Paper & Packaging, Service, Leather, Ceramic, Cement, Information Technology, General Insurance, Life Insurance, Telecom, Travel & Leisure, Miscellaneous, Debiture.

Sectoral P/E & EPS

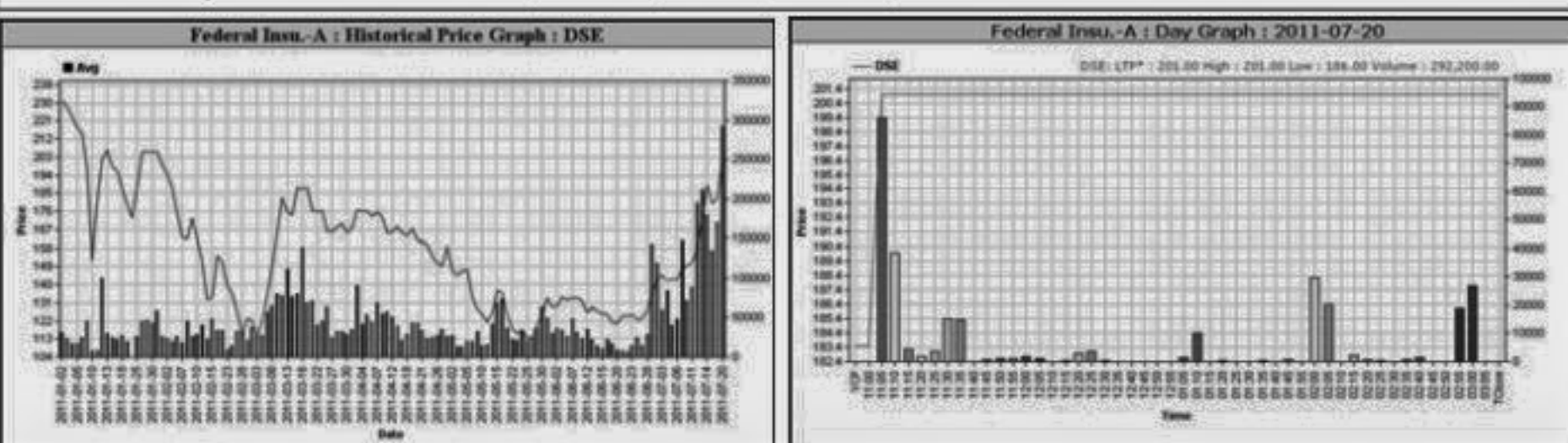
Table showing P/E and EPS ratios for various sectors: Bank, NBFI, Investment, Engineering, Food & Allied, Fuel & Power, Textile, Pharma & Chemical, Paper & Printing, Service, Leather, Ceramic, Cement, IT, General Insurance, Life Insurance, Telecom, Travel & Leisure, Miscellaneous, Stock Exchanges.

All the above PE and EPS are estimated to get a relative idea only and not calculated by any of the stock exchanges.

Prepared exclusively for Daily Star by Business Information Automation Service Line (BIASL) on the basis of information collected from daily stock quotations and audited reports of the listed companies.

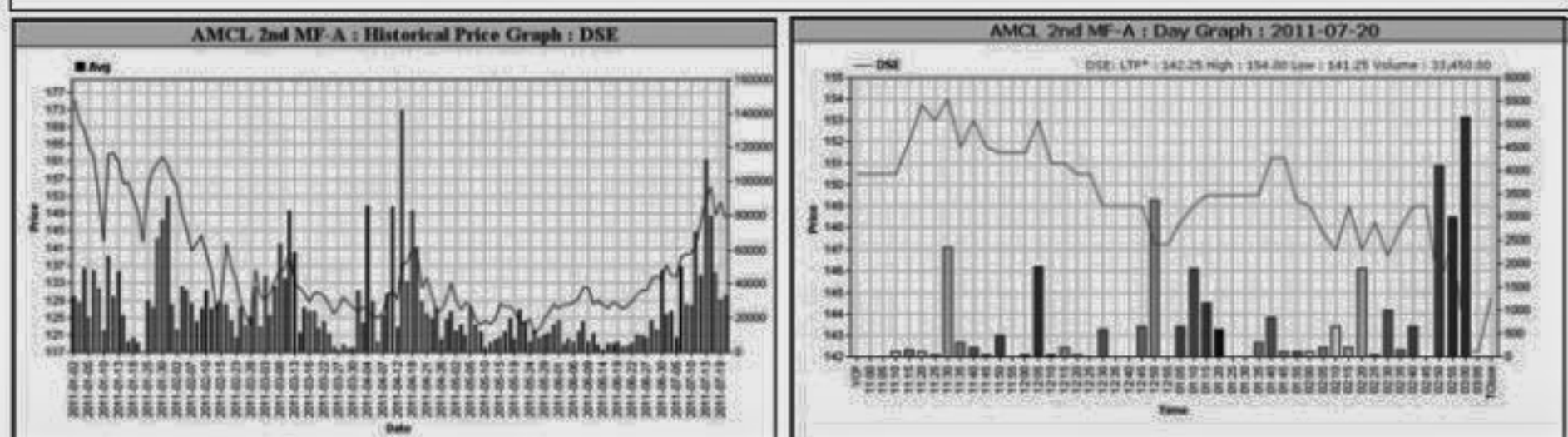
Capital Gainers

Table of top capital gainers from Dhaka Stock Exchange, listing companies like Federal Insu.-A, Barakatullah E. D.-N, BD Finance-A, Salvo Chemicals-N, UNITED AIR-B, Purabi G Insu.A, Summit Power -A, Premier Bank -A, Rupali Bank -A, National Housing Fin.-A.



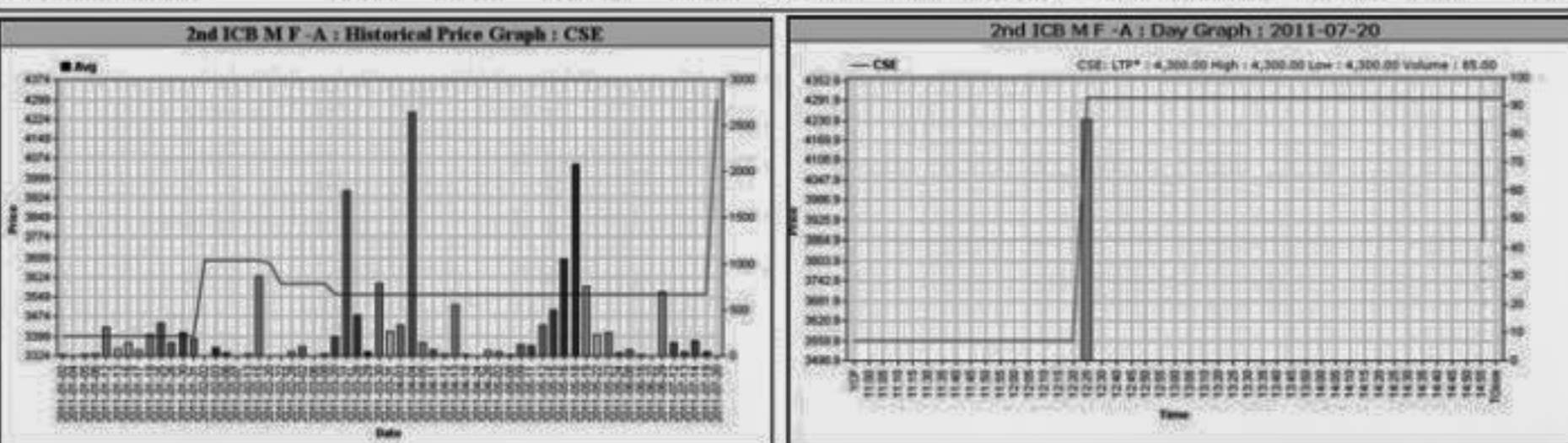
Capital Losers

Table of top capital losers from Dhaka Stock Exchange, listing companies like AMCL 2nd MF-A, AIBL 1st Is. M. F.-A, MeghnaCement -A, ACI Formulations-A, DBH 1st MF-A, Apex SpinningA, ICB AMCL3rd NRB MF-A, Kohinoor Chem -A, Shampur Sugar -Z, Phoenix Fin. 1st MF-A.



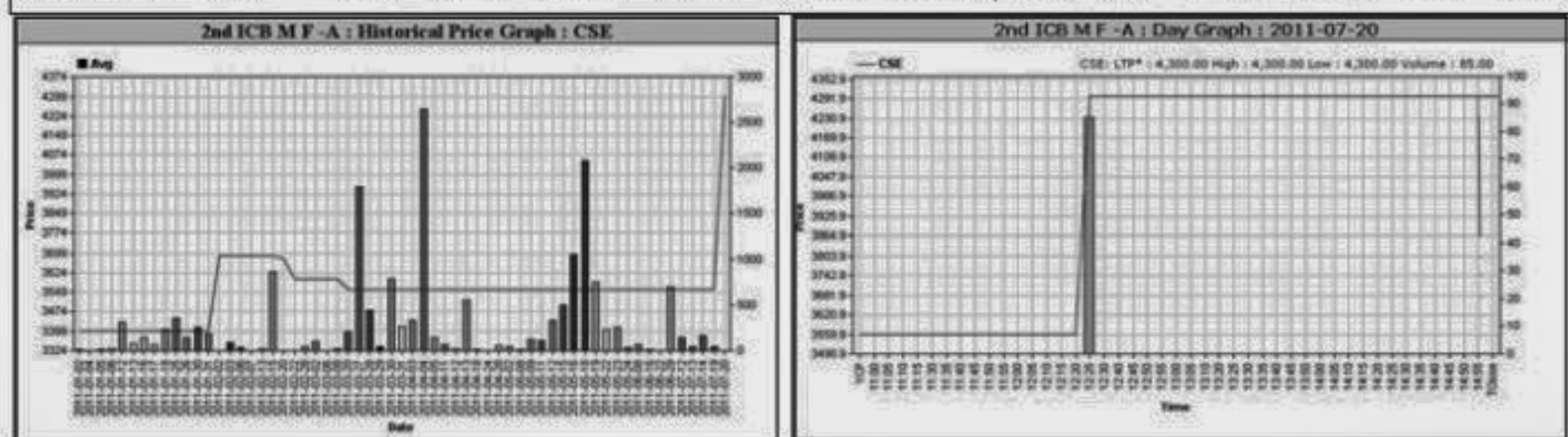
Chittagong Stock Exchange

Table of top capital gainers from Chittagong Stock Exchange, listing companies like 2nd ICB M F.-A, Federal Insu.-A, BD Finance-A, Salvo Chemicals-N, Prime Insur -A, Barakatullah E. D.-N, National Housing Fin.-A, UNITED AIR-B, Summit Power -A, Premier Bank -A.



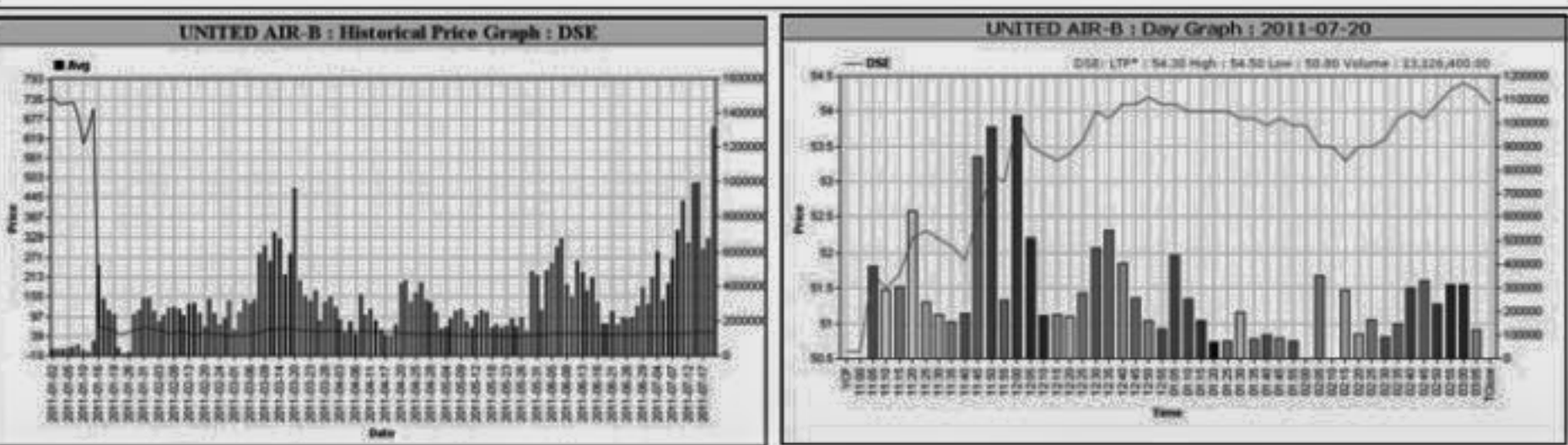
Chittagong Stock Exchange

Table of top capital losers from Chittagong Stock Exchange, listing companies like MBL 1st M. F.-A, DBH 1st MF-A, PrimeFin. 1st MF-A, Green Delta M.F.-A, Rangpur Foundry-A, Usmania Glass -A, Miracle Industries -B, Islami Ins.-BD-Z, MeghnaCement -A, ACI Formulations-A.



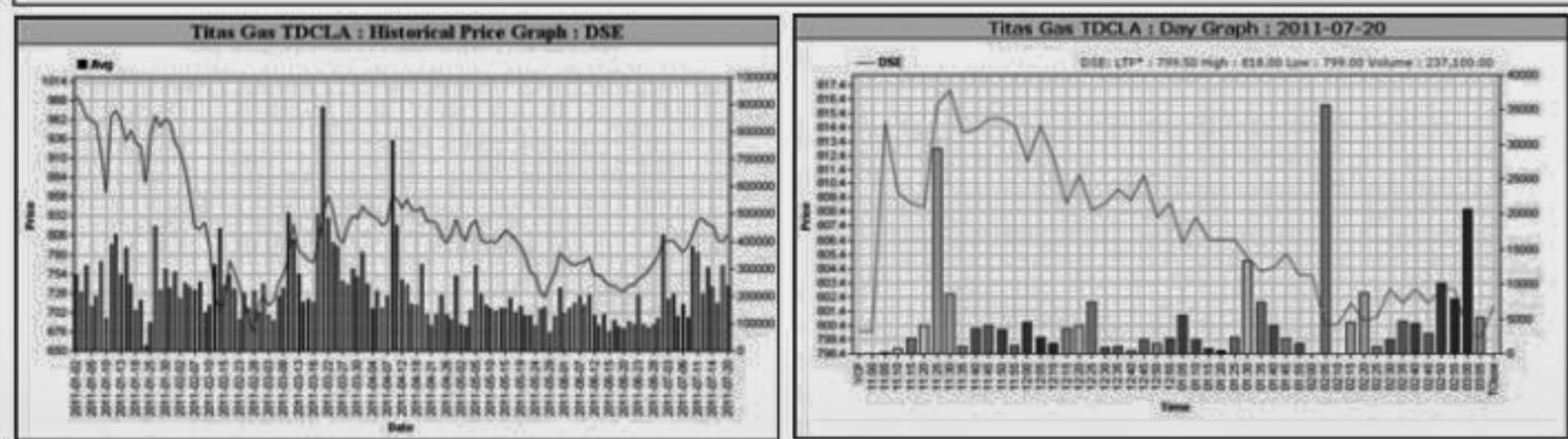
Turnover Leaders

Table of top turnover leaders from Dhaka Stock Exchange, listing companies like UNITED AIR-B, One Bank -A, Grameenphone-A, BEXIMCO Ltd., Social Islami, B-A, R. N. Spinning-A, M.L. Cement-N, UCBL -A, MJL BD Ltd.-N, First Lease-A, City Bank -A, Square Pharma -A, National Bank -A, Maksons Spinning-A, Aftab Auto.-A, Intl. Leasing-A, BEXTEX Ltd.-A, Summit Power -A, Fu-Wang Food A, LankaBangla Fin. -A, Southeast Bank-A, Golden Son -A.



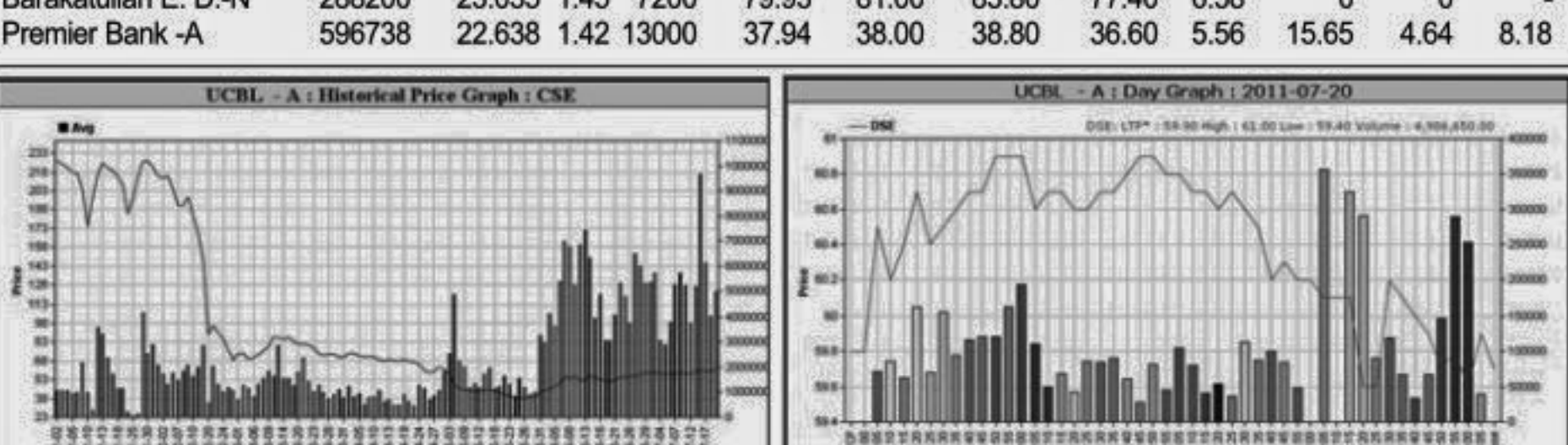
Market Cap. Leader

Table of top market cap. leaders from Dhaka Stock Exchange, listing companies like Grameenphone-A, ICB -A, Titas Gas TDCLA, Square Pharma -A, National Bank -A, Islami Bank BD -A, BSRM Steels-A, BEXIMCO Ltd., UCBL -A, Prime Bank-A, Pubali Bank -A, DESCO Ltd.-A, BATBCL -A, Summit Power -A, MJL BD Ltd.-N, Larfages Cement-Z, Dutch Ban. Brk.-A, Power Grid Co. -A, City Bank -A, Padma Oil Co. -A.



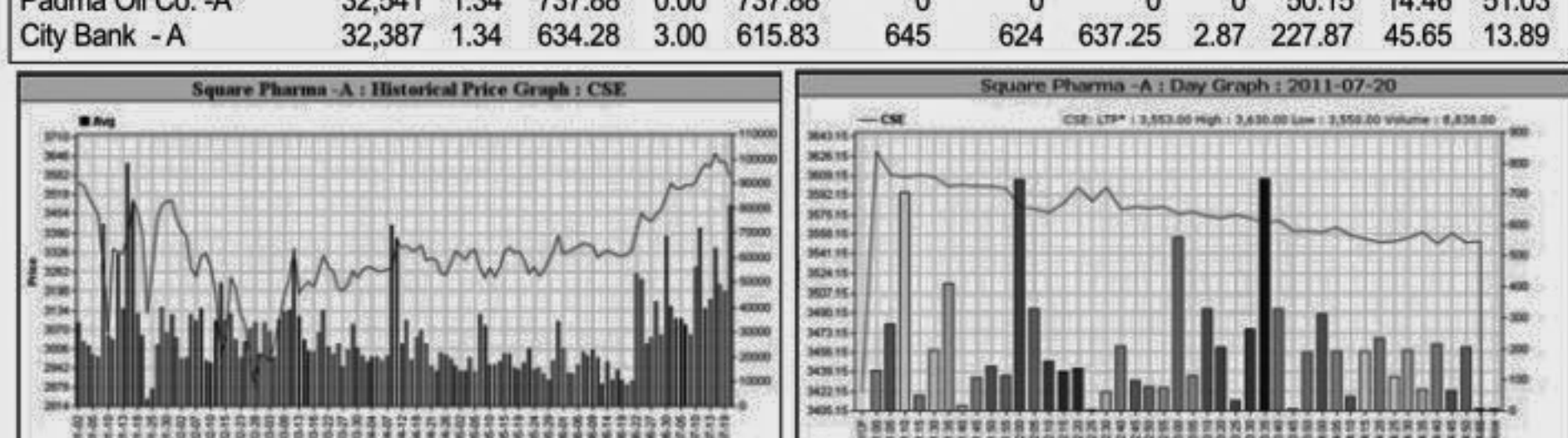
Chittagong Stock Exchange

Table of top turnover leaders from Chittagong Stock Exchange, listing companies like UNITED AIR-B, UCBL -A, Grameenphone-A, Social Islami, B-A, BEXTEX Ltd., Aftab Auto.-A, People's Leasing-A, MJL BD Ltd.-N, BEXIMCO Ltd., City Bank -A, R. N. Spinning-A, Square Pharma -A, Maksons Spinning-A, Intl. Leasing-A, Fu-Wang Food A, EXIM Bank -A, AB Bank -A, BD Finance-A, Barakatullah E. D.-N, Premier Bank -A.



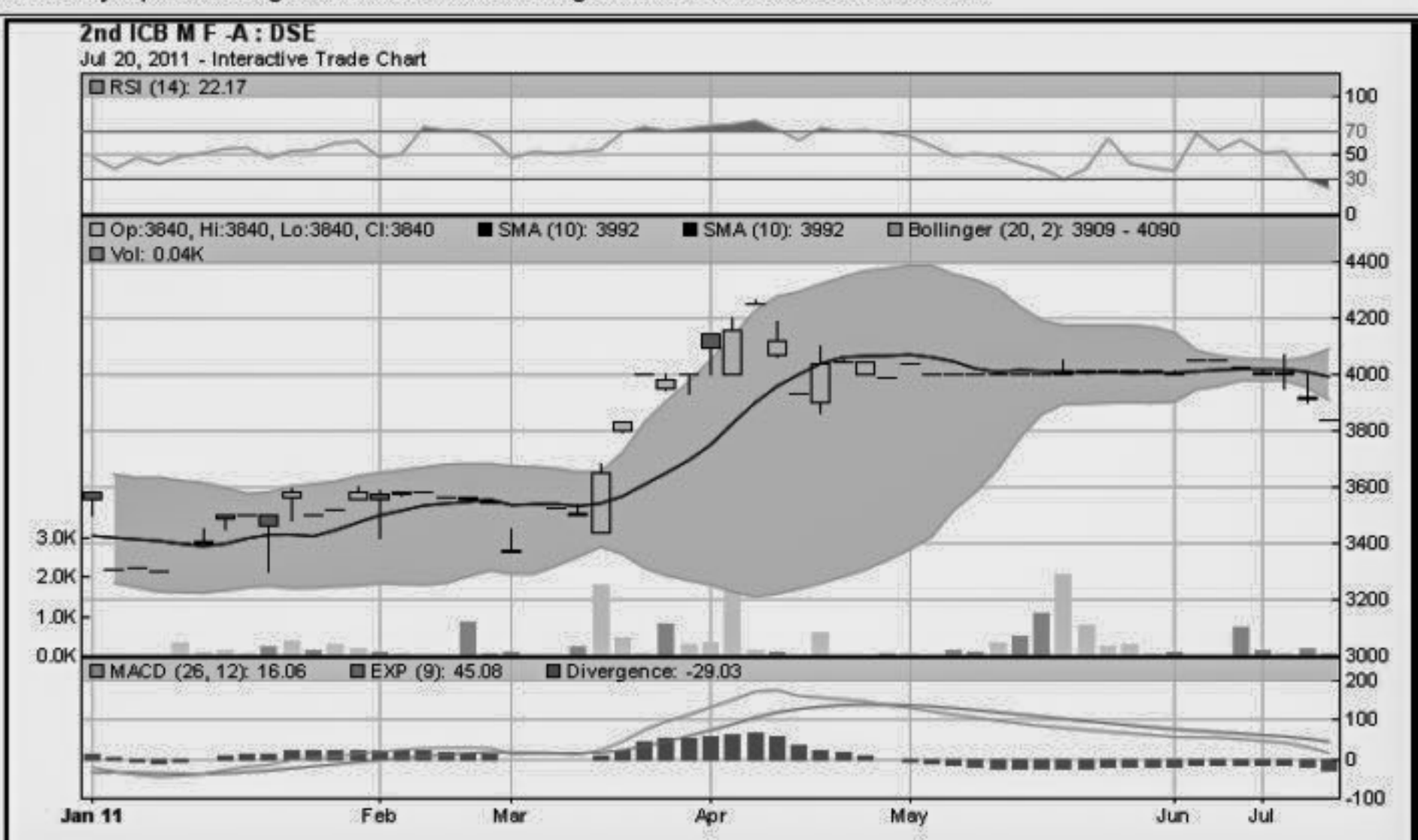
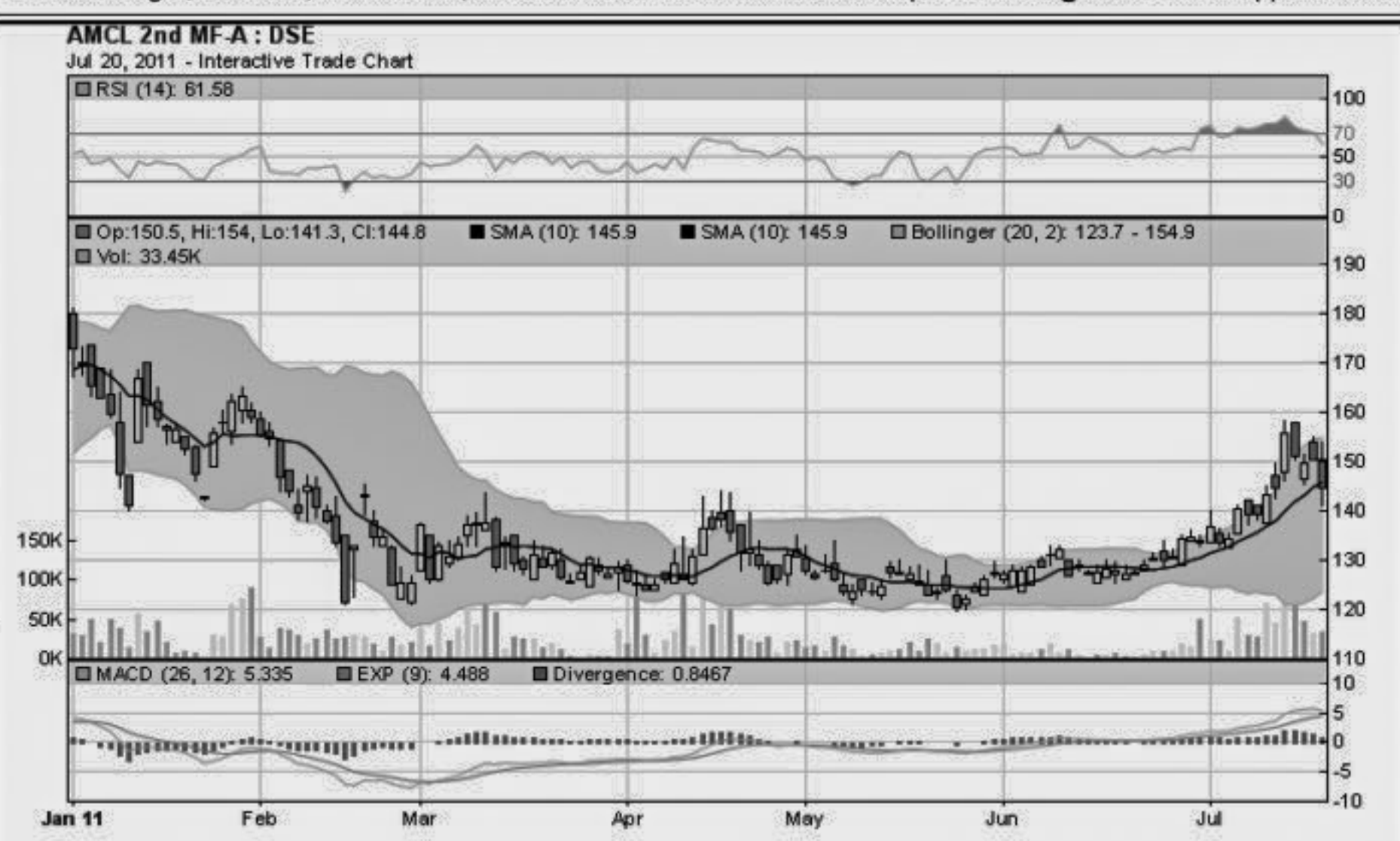
Chittagong Stock Exchange

Table of top turnover leaders from Chittagong Stock Exchange, listing companies like Grameenphone-A, ICB -A, Titas Gas TDCLA, Square Pharma -A, National Bank -A, Islami Bank BD -A, BSRM Steels-A, BEXIMCO Ltd., UCBL -A, Prime Bank-A, Pubali Bank -A, DESCO Ltd.-A, BATBCL -A, Summit Power -A, MJL BD Ltd.-N, Larfages Cement-Z, Dutch Ban. Brk.-A, Power Grid Co. -A, City Bank -A.



When to buy or sell

Investors follow many calculations of corporate performance when deciding if a stock is undervalued or overvalued. These range from the simple price-earnings ratio, or P/E, to far more technical ways of attempting to discern whether a stock is trending up or down. Here are some of the most common. RSI (Relative Strength Index): A technical momentum indicator that compares the size of recent gains to recent losses, in an attempt to determine overbought and oversold conditions of an asset.



Notes: Capital Gainer / Loser tables are prepared on the basis of the close price change of the traded issues. "Close" or "C.Price" or "D Clo." is the Closing Price of the day. "Chn %" indicates the price difference in percentage. "Avg" prices indicate weighted average prices of all transactions of the day. "DayHi"/"D Hi" and "DayLo"/"D Lo" indicate the highest and lowest transacted price of the day. "Yr.Hi" and "Yr. Lo" indicate the highest and lowest transacted price last one running year, everyday the range moves by one day. "P Day"=Previous Day. EPS is based on available latest audited accounts of the companies. EPS & Book value per share are diluted at bookclosing date whenever it is applicable. Only the positive earning companies are considered in calculating the PER and EPS of the Sectors and Stock Exchanges.