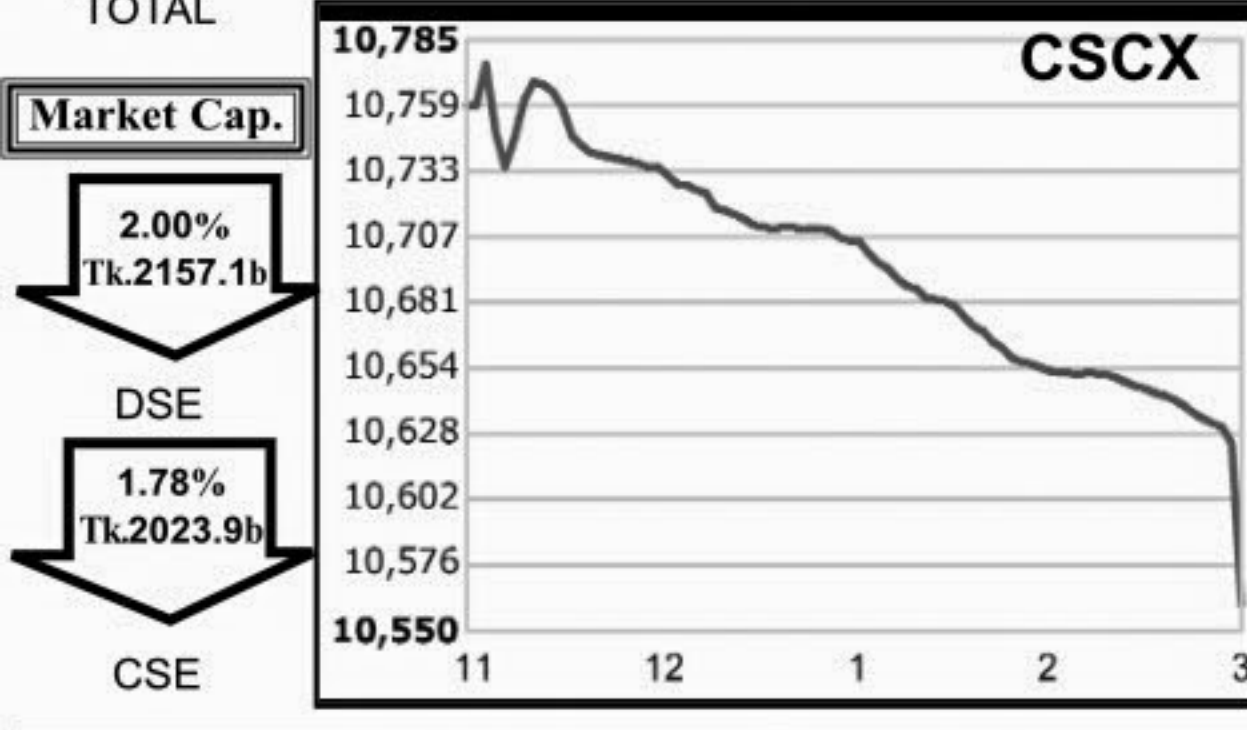
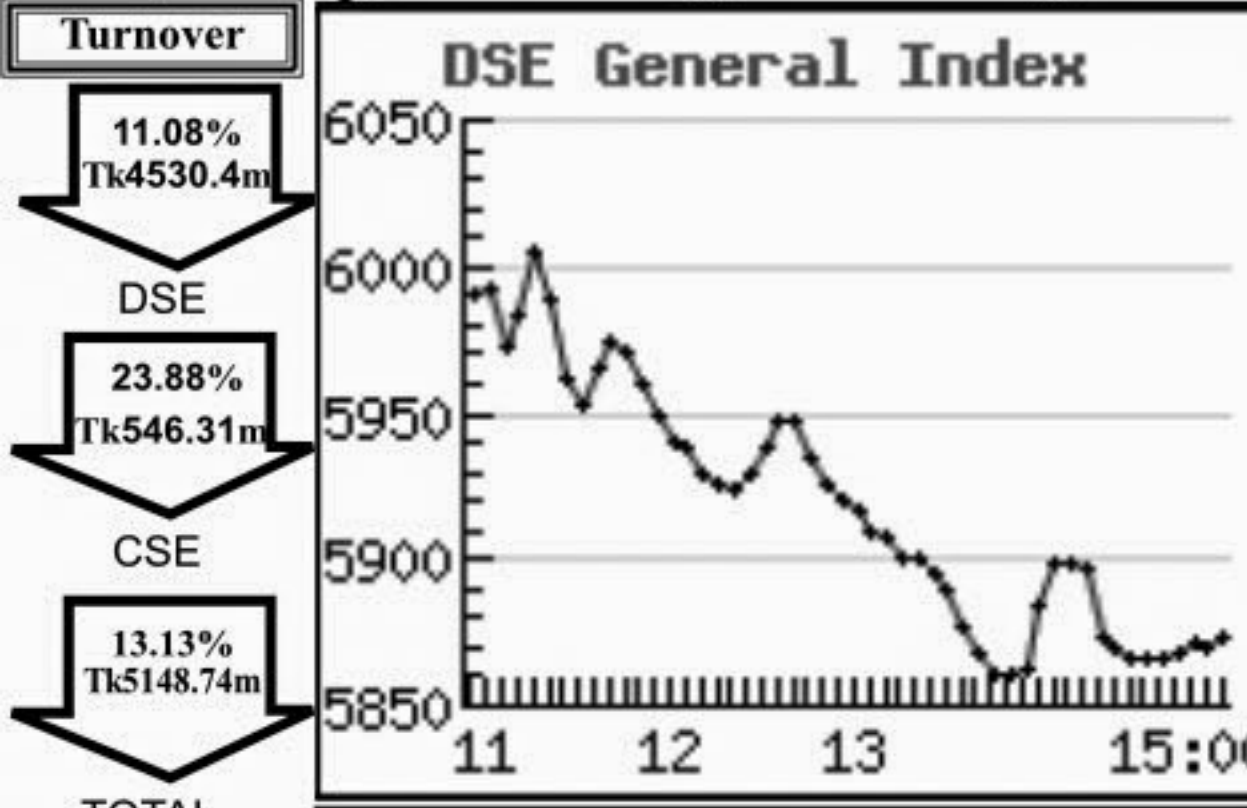


Capital Market Highlights: May 03, 2011

INDEX table showing All Share, DSE General, DSE 20, All Share, CSE CSCX, and CSE 30 indices with their respective closing values and percentage changes.

Turnover and Market Cap. table showing DSE and CSE turnover and market capitalization figures.



Key Features - May 03

Key Features table showing indicators such as Turnover (Million Taka), Turnover (Volume), No. of Contract, and Market Cap. Equity for DSE, CSE, and TOTAL.

Combined Turnover Leaders

Combined Turnover Leaders table listing top companies by volume, value, and percentage of total turnover.

Sectoral Turnover Summary

Sectoral Turnover Summary table showing turnover details for various sectors like Bank, NBFI, Investment, Engineering, etc.

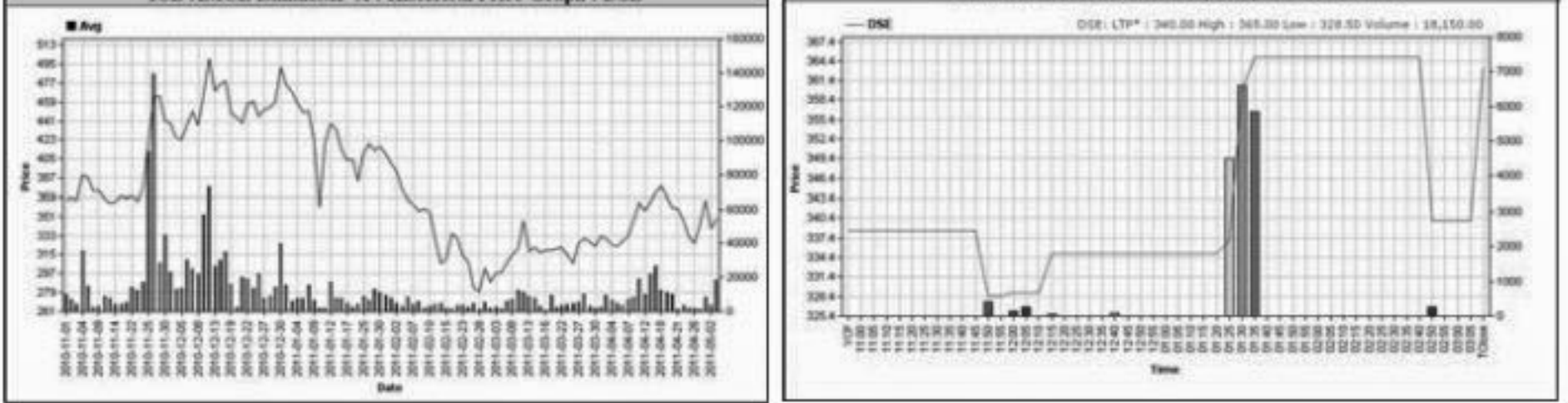
Sectoral P/E & EPS

Sectoral P/E & EPS table providing P/E ratios and EPS for various sectors like Bank, NBFI, Investment, etc.

Prepared exclusively for Daily Star by Business Information Automation Service Line (BIASI), on the basis of information collected from daily stock quotations and audited reports of the listed companies.

Capital Gainers

Dhaka Stock Exchange table listing capital gainers with columns for Company, Price Chn. (%), Price Scale, Turnover, and BookV.

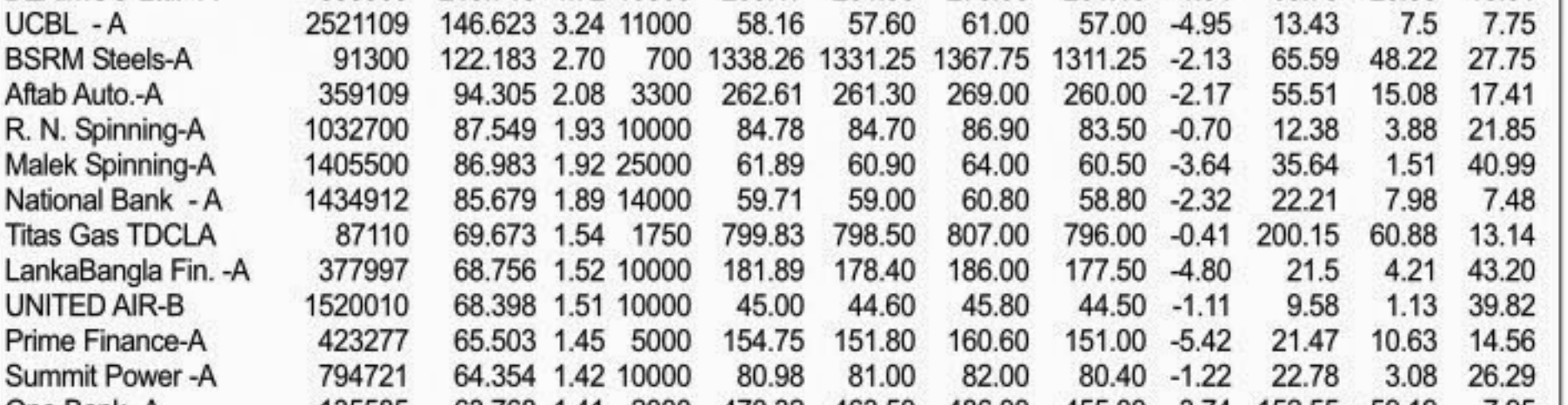


Chittagong Stock Exchange table listing capital gainers from Chittagong with columns for Company, Price Chn. (%), Price Scale, Turnover, and BookV.



Turnover Leaders

Dhaka Stock Exchange table listing turnover leaders with columns for Company, Vol., Value, % of Big, Price Scale, C. Pts, and BookV.

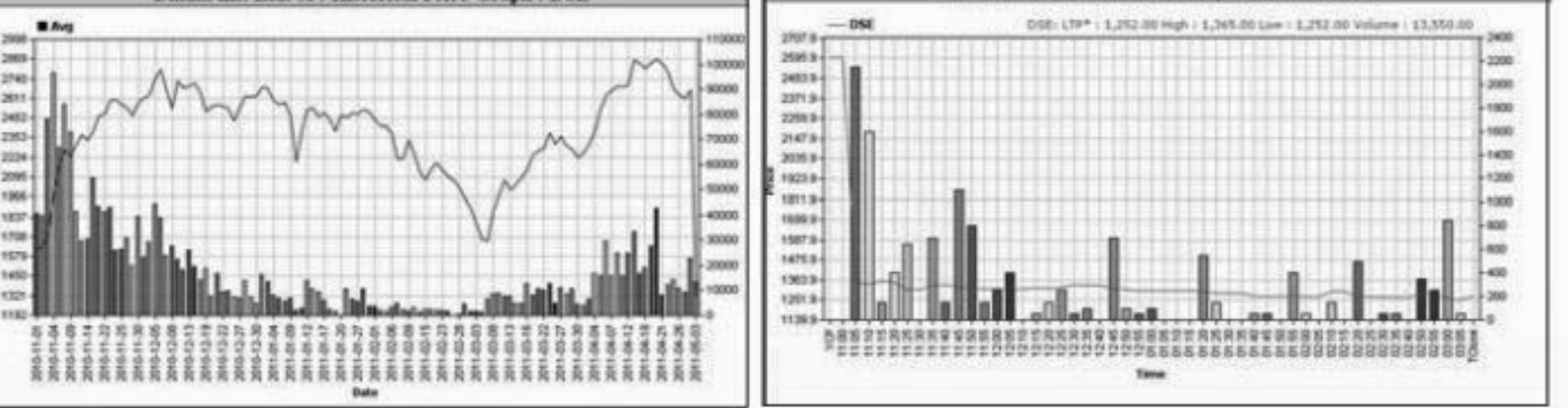


Chittagong Stock Exchange table listing turnover leaders from Chittagong with columns for Company, Vol., Value, % of Big, Price Scale, C. Pts, and BookV.

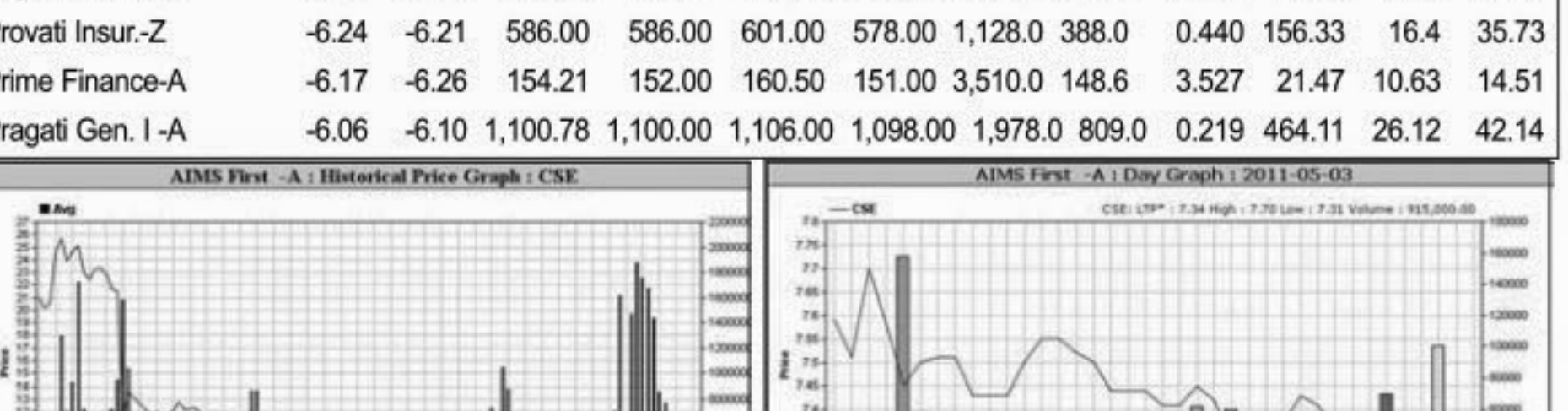


Capital Losers

Dhaka Stock Exchange table listing capital losers with columns for Company, Price Chn. (%), Price Scale, Turnover, and BookV.



Chittagong Stock Exchange table listing capital losers from Chittagong with columns for Company, Price Chn. (%), Price Scale, Turnover, and BookV.



Market Cap. Leader

Dhaka Stock Exchange table listing market capitalization leaders with columns for Company, Market Cap., % of Total, Average, Price Scale, and BookV.



Chittagong Stock Exchange table listing market capitalization leaders from Chittagong with columns for Company, Market Cap., % of Total, Average, Price Scale, and BookV.



When to buy or sell

Investors follow many calculations of corporate performance when deciding if a stock is undervalued or overvalued. These range from the simple price-earnings ratio, or P/E, to far more technical ways of attempting to discern whether a stock is trending up or down.



Notes: Capital Gainer / Loser tables are prepared on the basis of the close price change of the traded issues. "Close" or "C.Price" or "D Clo." is the Closing Price of the day. "Chn %" indicates the price difference in percentage.