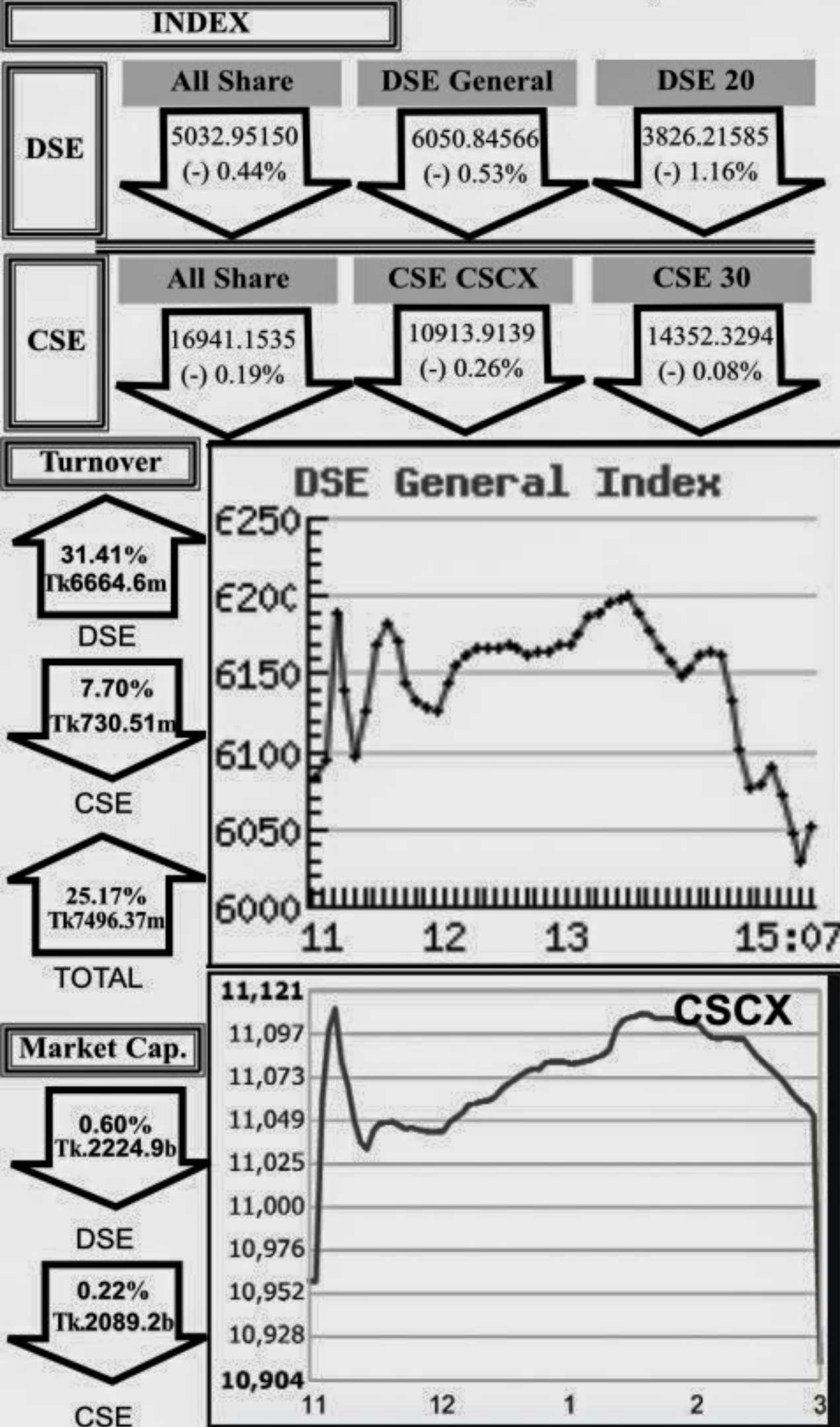


Capital Market Highlights: April 28, 2011



Capital Gainers

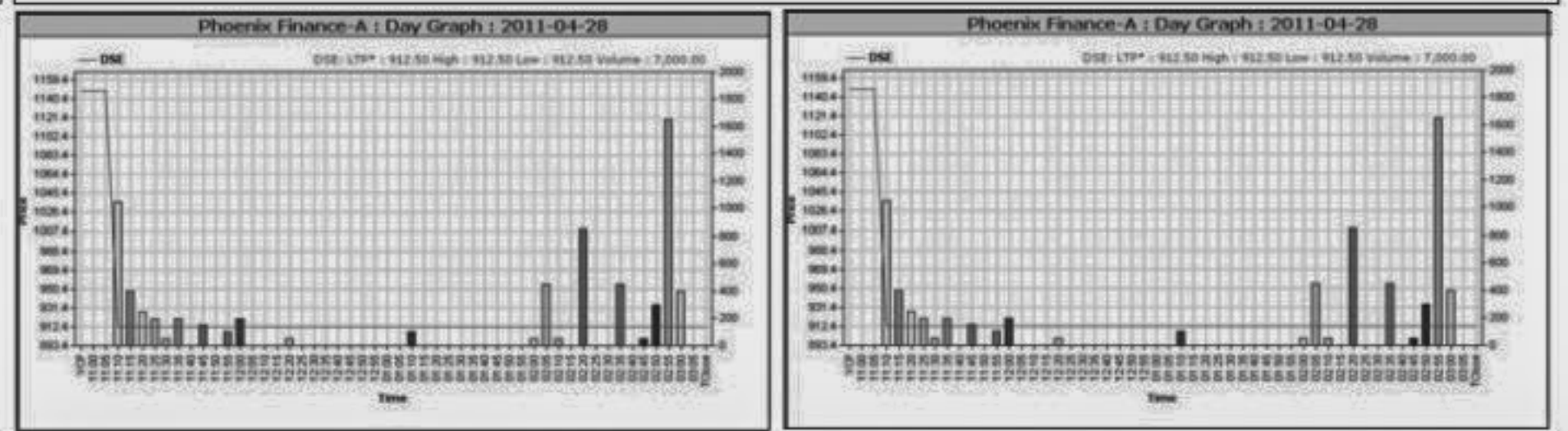
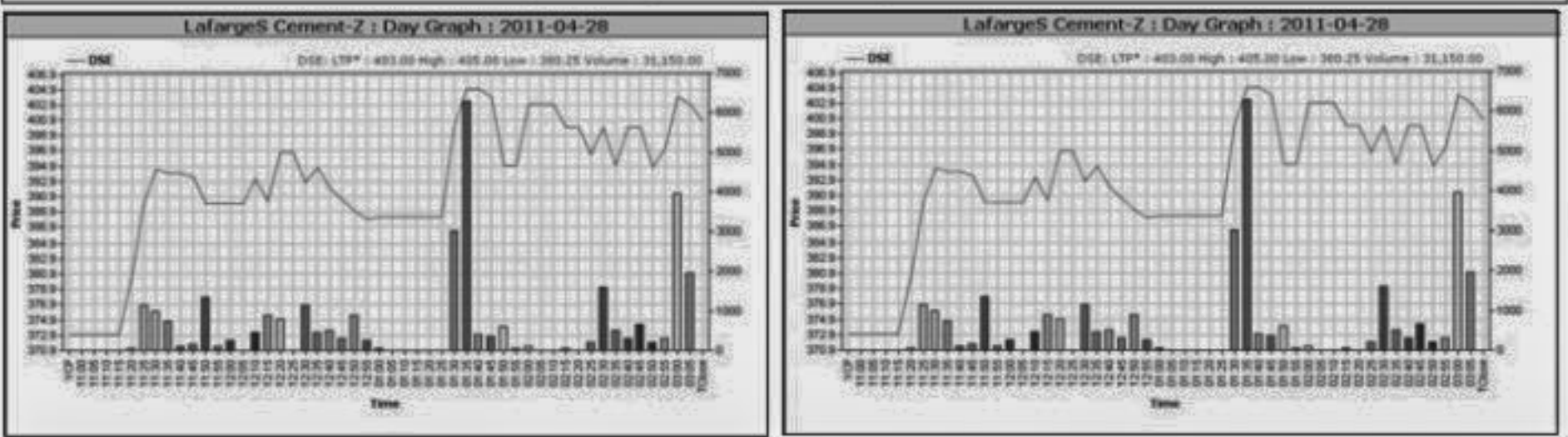
Dhaka Stock Exchange

Company	Price Chn. (%)		Price Scale				Turnover		BookV			
	Close	Avg.	Avg.	Close	DayHi	DayLo	Yr Hi	YrLo	M.Tk	Per S	EPS	PE
Lafarge Cement-Z	7.44	6.48	398.11	400.75	405.00	380.25	844.00	321.0	12.401	72.83	-9.02	-44.14
Monno Ceramic-A	6.64	10.73	920.73	919.25	924.25	866.00	1679.00	410.0	14.507	173.8	2.37	388.49
Tallu Spinning-A	6.62	12.26	746.63	744.50	750.50	726.00	1273.8	166.0	9.602	110.43	3.19	234.05

Capital Losers

Dhaka Stock Exchange

Company	Price Chn. (%)		Price Scale				Turnover		BookV			
	Close	Avg.	Avg.	Close	DayHi	DayLo	Yr Hi	YrLo	M.Tk	Per S	EPS	PE
Phoenix Finance-A	-20.51	-21.41	912.50	912.50	912.50	912.50	2599.5	912.5	6.388	226.76	33.78	27.01
B I F C-A	-14.17	-15.14	671.60	671.00	672.00	661.00	1368.0	610.0	15.082	137.21	37.26	18.02
Zeal Bangla Sugar-Z	-9.68	-8.28	25.36	25.20	27.00	25.20	27.9	13.9	3.076	-110.74	-14.35	-1.77

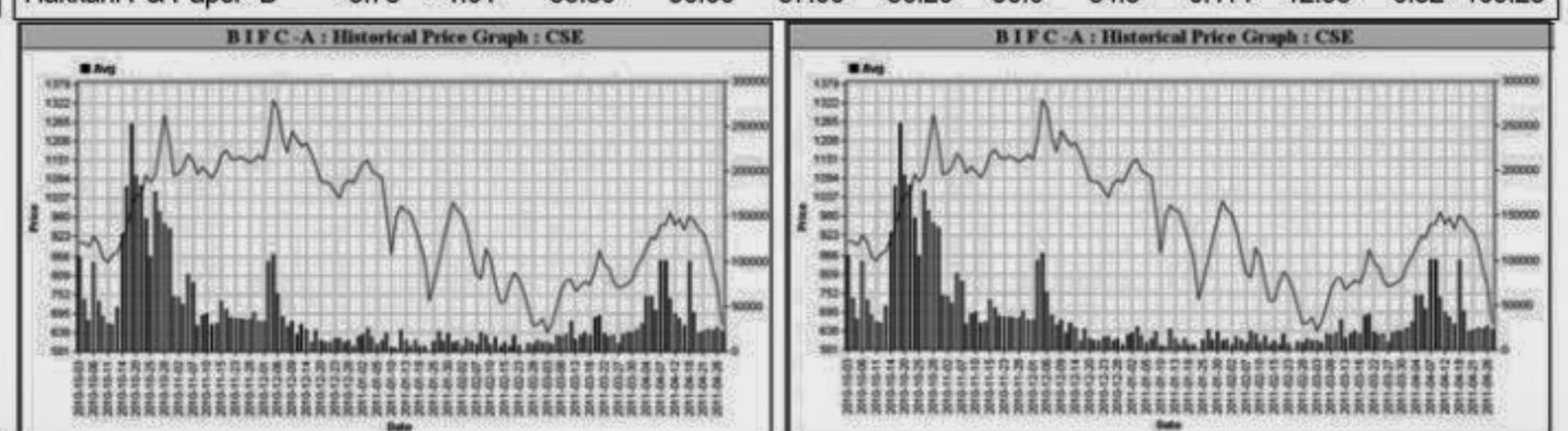
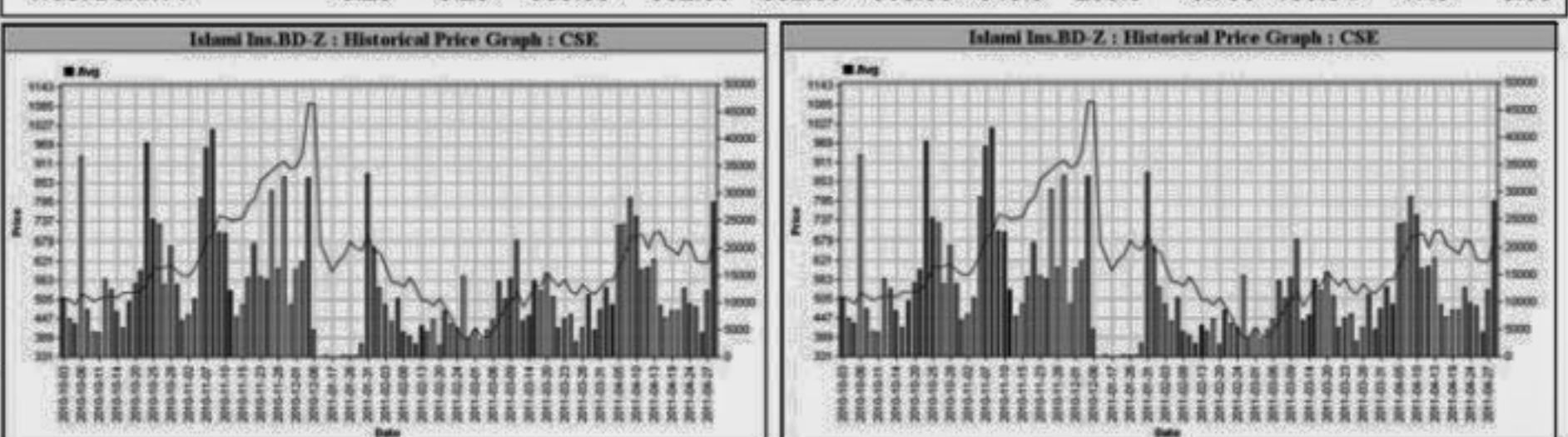


Chittagong Stock Exchange

Company	Vol.	Value	% of Total	Big Lot	Avg. Close	DayHi	DayLo	C.Pitch	Per S	EPS	PE	
Islami Ins.BD-Z	10.97	13.36	697.86	698.00	730.00	685.00	1112.5	375.0	0.489	147.45	21.95	31.79
Lafarge Cement-Z	8.72	7.48	395.53	395.75	395.75	393.00	843.0	326.0	1.760	72.83	-9.02	-43.85

Chittagong Stock Exchange

Company	Market Cap.	% of Total	Average Price	Chn. P Day	D Hi	D Lo	D Clo.	Chn%	Per S	EPS	PE	
Phoenix Finance-A	20.59	20.57	918.66	918.75	919.25	903.25	2,590.0	903.3	1.332	226.76	33.78	27.20
B I F C-A	-13.99	-14.61	662.25	662.25	662.25	662.25	1,370.0	570.0	0.364	137.21	37.26	17.77



Key Features - April 28

Indicators	DSE	CSE	TOTAL
Turnover (Million Taka)	6,664.59	730.51	7,395.09
Turnover (Volume)	63,298,957	9,577,073	72,876,030
No. of Contract	151,627	25,488	177,115
Traded Issues	252	192	252
Issue Gain (Avg. Price Basis)	215	165	215
Issue Loss (Avg. Price Basis)	35	26	35
Unchanged Issue (Avg. Price Basis)	2	1	2
Market Cap. Equity (Billion Tk.)	2,224.85	2,089.17	2,224.85
Market Cap. Equity (Billion US\$)	32.48	30.50	32.48

Combined Turnover Leaders

Company	Volume (Share)	Value (M. Taka)	% of Total	Average Price
BEXIMCO Ltd. -A	1643560	475.69	6.43	289.42
DESCO Ltd. -A	139178	270.30	3.66	194.21
Titas Gas TDCLA	280275	231.87	3.14	827.3
BEXTEX Ltd. -A	3852735	221.45	2.99	57.48
UNITED AIR-B	4079650	195.79	2.65	47.99
Aftab Auto-A	639158	180.24	2.44	281.99
BSRM Steels-A	110210	157.17	2.13	1426.09
National Bank -A	2460359	147.07	1.99	59.78
One Bank -A	304593	143.18	1.94	470.06
ConfidenceCement A	507730	109.42	1.48	215.5
Maksons Spinning-A	2118050	108.55	1.47	51.25
Malek Spinning-A	1596000	105.09	1.42	65.85
Shinepukur Ceramics-A	1248445	103.71	1.40	83.07
Southeast Bank-A	336173	101.73	1.38	302.63
Mercantile Bank -A	311825	95.81	1.30	307.25
UCBL -A	1449460	93.33	1.26	64.39
Keya Cosmetics -A	888002	91.95	1.24	103.54
Grameenphone-A	574150	91.61	1.24	159.57
People's Leasing-A	604900	83.24	1.13	137.6
RAK Ceramics-A	693664	82.98	1.12	119.63
Lanka Bangla Fin. -A	396717	78.44	1.06	197.73
BD. Thai Alum -A	88137	77.73	1.05	881.92
Debandhu Polymer-N	853000	75.93	1.03	89.02
City Bank -A	161578	75.48	1.02	467.13
Active Fine Chem-N	892000	75.34	1.02	84.46
Fu-wang Ceramic-A	155375	73.90	1.00	475.63
Golden Son -A	894748	71.62	0.97	80.04
AB Bank -A	77596	71.59	0.97	922.58
Eastern Housing -A	70804	66.56	0.90	940.05
Beximco Pharma -A	558072	64.68	0.87	115.9

When to buy or sell

Investors follow many calculations of corporate performance when deciding if a stock is undervalued or overvalued. These range from the simple price-earnings ratio, or P/E, to far more technical ways of attempting to discern whether a stock is trending up or down. Here are some of the most common.

RSI (Relative Strength Index): A technical momentum indicator that compares the size of recent gains to recent losses, in an attempt to determine overbought and oversold conditions of an asset. Stocks with more or strong gains have a higher RSI than stocks that had more or stronger losses. **SMA (Simple Moving Average):** A simple, or arithmetic, moving average is the average stock price over a certain period of time. It adds up the closing price of the security for a given period and then divides the total by the number of intervals. Short-term averages respond quickly to changes in the price of the stock, so appear less steady, while long-term averages are slow to react. **EMA (Exponential Moving Average):** A type of moving average that is similar to a simple moving average, except that more weight is given to the latest data. The exponential moving average is also known as "exponentially weighted moving average". **Bollinger Band:** A band that provides a relative definition of high and low, it was developed by famous technical trader John Bollinger. By definition, prices are high at the upper band and low at the lower band. The band usually plots two standard deviations away from a simple moving average. Because the standard deviation is a measure of volatility, the bands adjust themselves to market conditions. When the markets become volatile, the bands widen (move further away from the average); during less volatile periods, the bands contract. The closer the prices move to the upper band, the more overbought the market, and the closer the prices move to the lower band, the more oversold the market. **MACD (Moving Average Convergence Divergence):** A trend-following momentum indicator that shows the relationship between two moving averages of prices. It is used to spot changes in the strength, direction, momentum, and duration of a trend in a stock's price. **Divergence:** This happens when a security's price diverges from the MACD. It signals the end of the current trend.

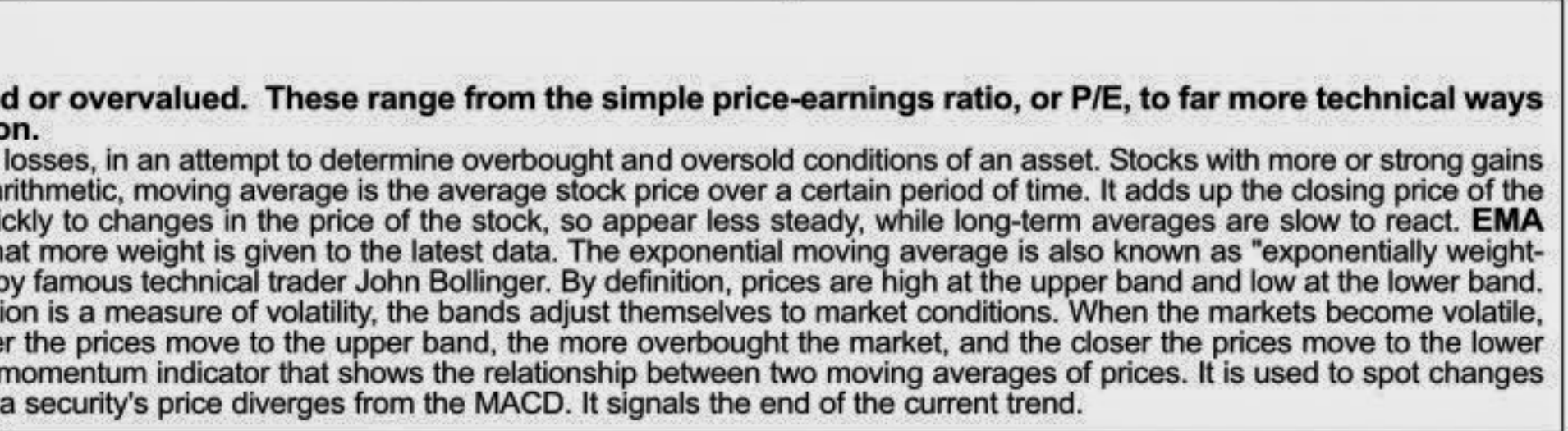
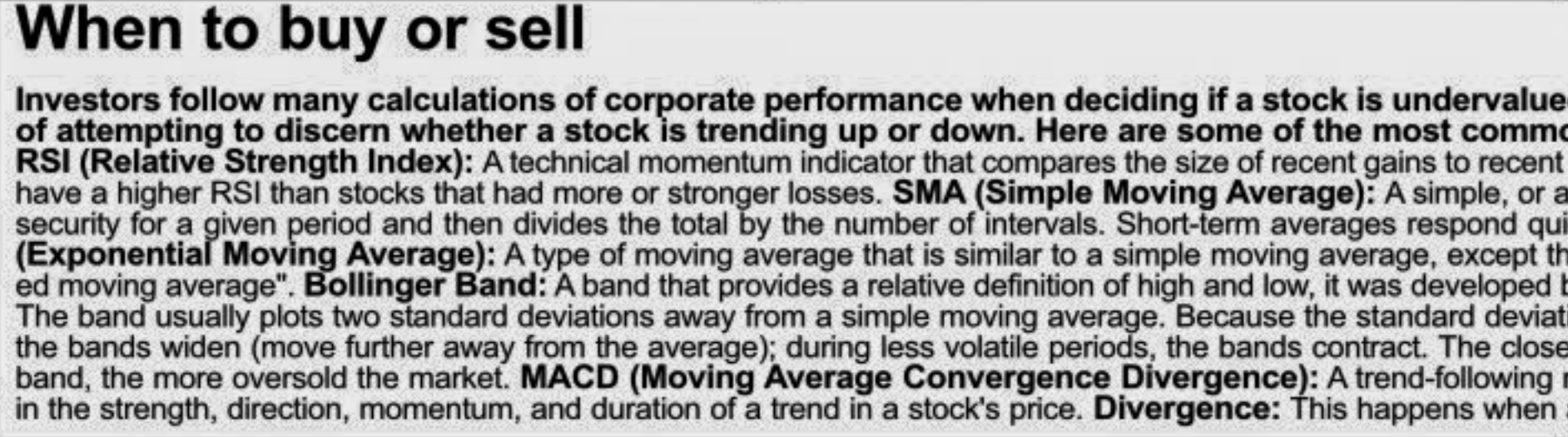
Sectoral Turnover Summary

Sector	DSE	CSE	Total
Bank	1241.75	18.63	200.07
NBFI	587.79	8.82	42.78
Investment	199.00	2.99	19.04
Engineering	729.10	10.94	77.78
Food & Allied	131.75	1.98	10.71
Fuel & Power	656.87	9.86	22.37
Jute	4.05	0.06	101.28
Textile	732.09	10.98	101.28
Pharma & Chemical	526.36	7.90	38.51
Paper & Packaging	0.26	0.00	0.11
Service	79.93	1.20	21.41
Leather	32.03	0.48	0.75
Ceramic	254.64	3.82	23.31
Cement	152.96	2.30	19.14
Information Technology	29.59	0.44	5.72
General Insurance	418.54	6.28	17.04
Life Insurance	194.68	2.92	2.37
Telecom	79.81	1.20	11.80
Travel & Leisure	148.79	2.23	47.00
Miscellaneous	459.84	6.90	69.14
Debtenture	4.76	0.07	0.16

Sectoral P/E & EPS

Sector	P/E		EPS(%)	
	DSE	CSE	DSE	CSE
Bank	9.43	9.39	48.03	48.03
NBFI	24.72	24.91	54.09	53.43
Investment	40.27	13.70	35.57	35.57
Engineering	30.24	30.90	47.32	44.73
Food & Allied	16.94	16.33	138.57	151.73
Fuel & Power	18.45	18.38	51.40	51.40
Textile	28.50	28.54	23.19	23.23
Pharma. & Chemical	31.79	31.98	65.54	56.05
Paper & Printing	60.06	61.26	8.48	9.01
Service	15.08	15.16	64.01	64.01
Leather	15.98	15.88	98.36	118.93
Ceramic	50.14	50.76	19.99	19.99
Cement	22.40	22.25	101.17	101.17
IT	27.94	28.04	12.44	12.44
General Insurance	28.69	28.95	31.46	31.44
Life Insurance	53.63	54.55	96.13	96.13
Telecom	20.12	20.11	79.30	79.30
Travel & Leisure	220.56	640.45	2.06	0.75
Miscellaneous	16.18	16.31	155.10	146.10
Stock Exchanges	17.08	16.30	49.34	49.04

Prepared exclusively for Daily Star by Business Information Automation Service Line (BIASL), on the basis of information collected from daily stock quotations and audited reports of the listed companies. High level of caution has been taken to collect and present the above information and data. The publisher will not take any responsibility if any body uses this information and data for his/her investment decision. For any query please email to biasl@bol-online.com or call 01552153562 or go to www.biasl.net



Notes: Capital Gainer / Loser tables are prepared on the basis of the close price change of the traded issues. "Close" or "C.Price" or "D Clo." is the Closing Price of the day. "Chn %" indicates the price difference in percentage. "Avg" prices indicate weighted average prices of all transactions of the day. "DayHi"/"D Hi" and "DayLo"/"D Lo" indicate the highest and lowest transacted price of the day. "Yr.Hi" and Yr. Lo" indicate the highest and lowest transacted price last one running year, everyday the range moves by one. "P Day"=Previous Day. EPS is based on available latest audited accounts of the companies. EPS & Book value per share are diluted at bookclosing date whenever it is applicable. Only the positive running companies are considered in calculating the PER and EPS of the Sectors and Stock Exchanges.