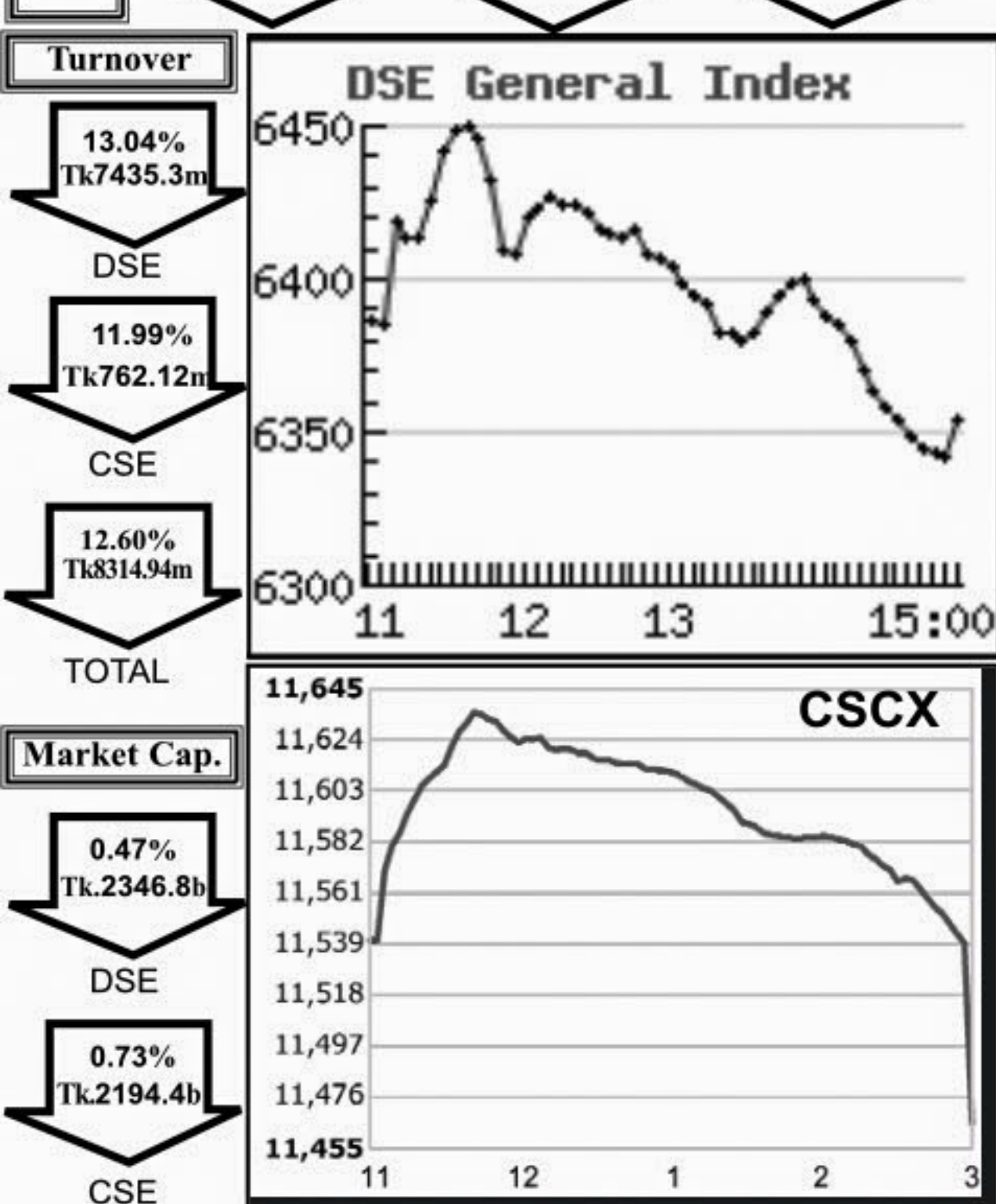


Capital Market Highlights: April 17, 2011

INDEX table showing DSE All Share, DSE General, DSE 20, CSE All Share, CSE CSCX, and CSE 30 with their respective price changes.



Key Features - April 17

Indicators table with columns for DSE, CSE, and TOTAL, listing metrics like Turnover, No. of Contract, and Market Cap.

Combined Turnover Leaders

Table listing top turnover leaders with columns for Company, Volume, Value, %of, and Average Price.

Sectoral Turnover Summary

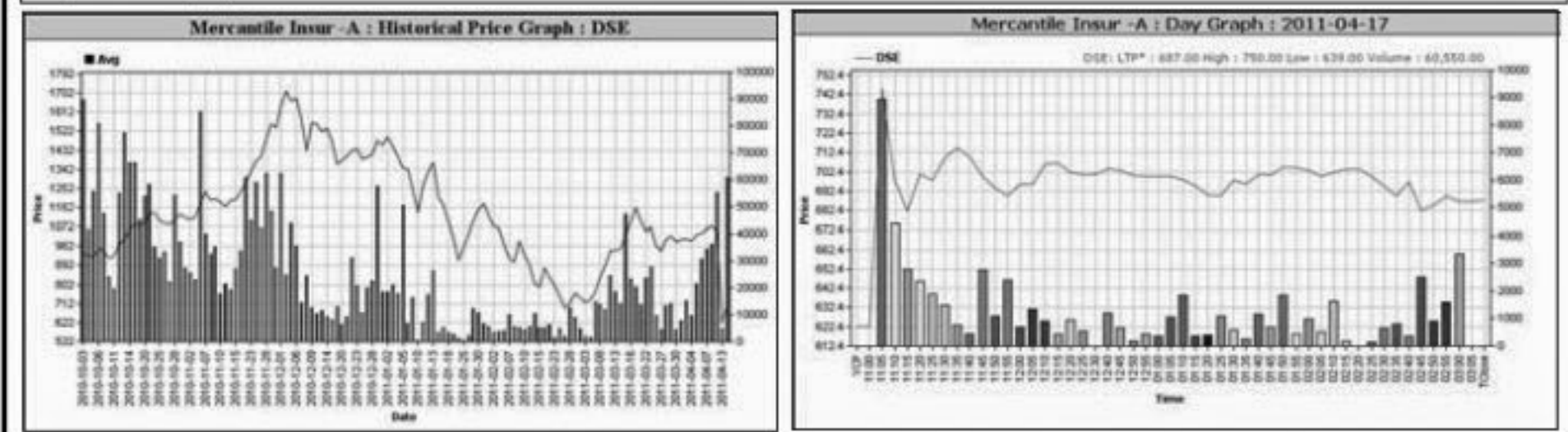
Table summarizing turnover by sector, including Bank, NBFI, Investment, Engineering, and others.

Sectoral P/E & EPS

Table showing P/E and EPS ratios for various sectors like Bank, NBFI, Investment, and Engineering.

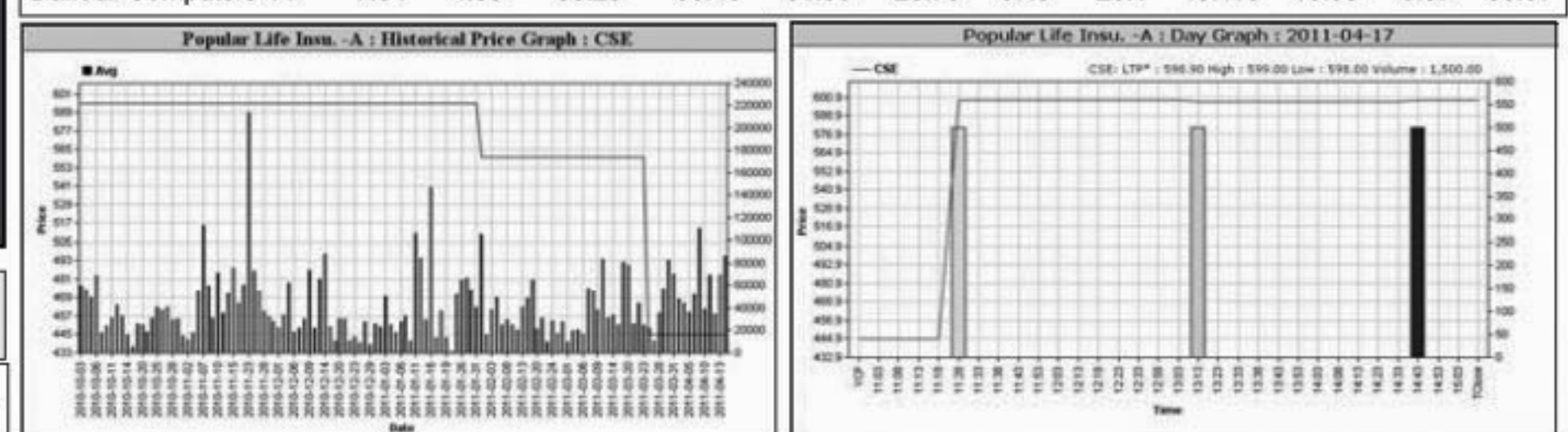
Capital Gainers

Table of Capital Gainers from the Dhaka Stock Exchange, listing companies like Mercantile Insur and Meghna PET Ind.



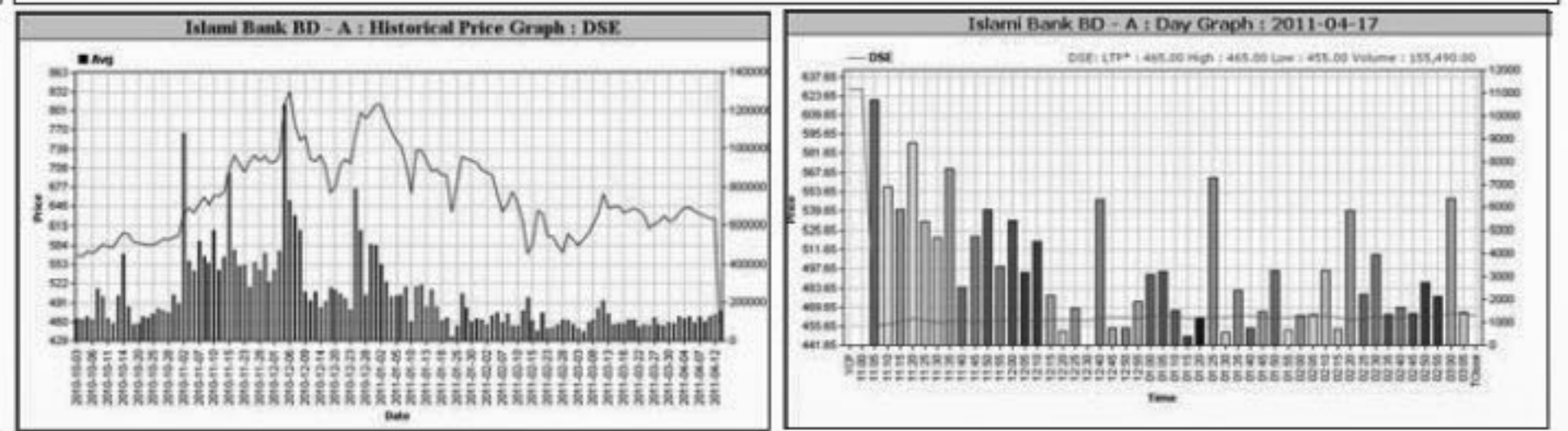
Chittagong Stock Exchange

Table of top gainers from the Chittagong Stock Exchange, listing companies like Popular Life Insu and Beacon Pharma.



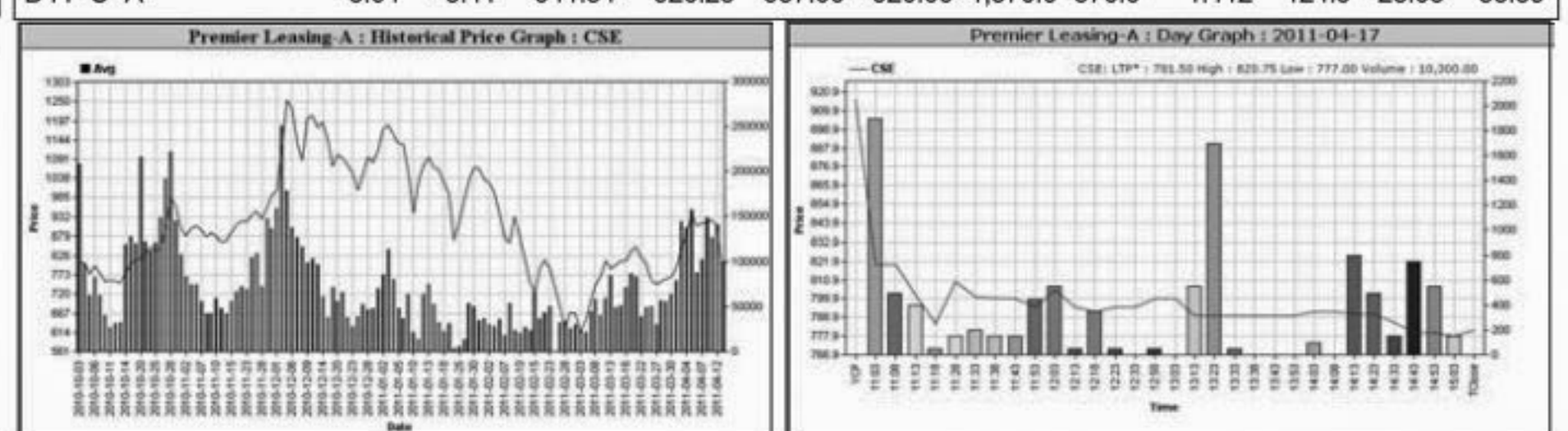
Capital Losers

Table of Capital Losers from the Dhaka Stock Exchange, listing companies like Islami Bank BD and Premier Leasing.



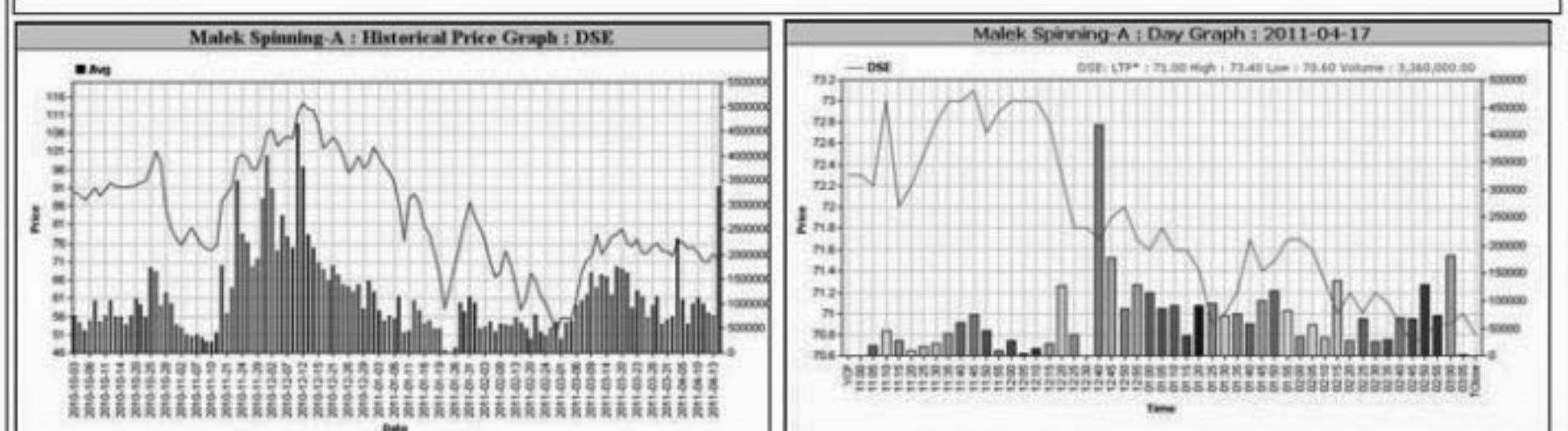
Chittagong Stock Exchange

Table of top losers from the Chittagong Stock Exchange, listing companies like Islami Bank BD and Premier Leasing.



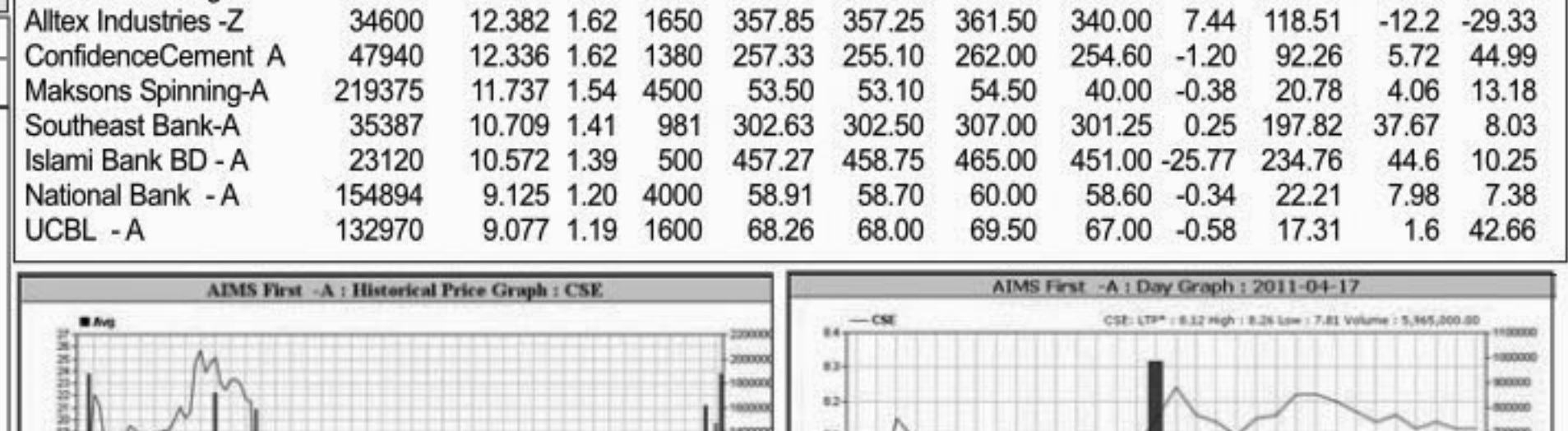
Turnover Leaders

Table of top turnover leaders from the Dhaka Stock Exchange, listing companies like BSRM Steels and Malek Spinning.



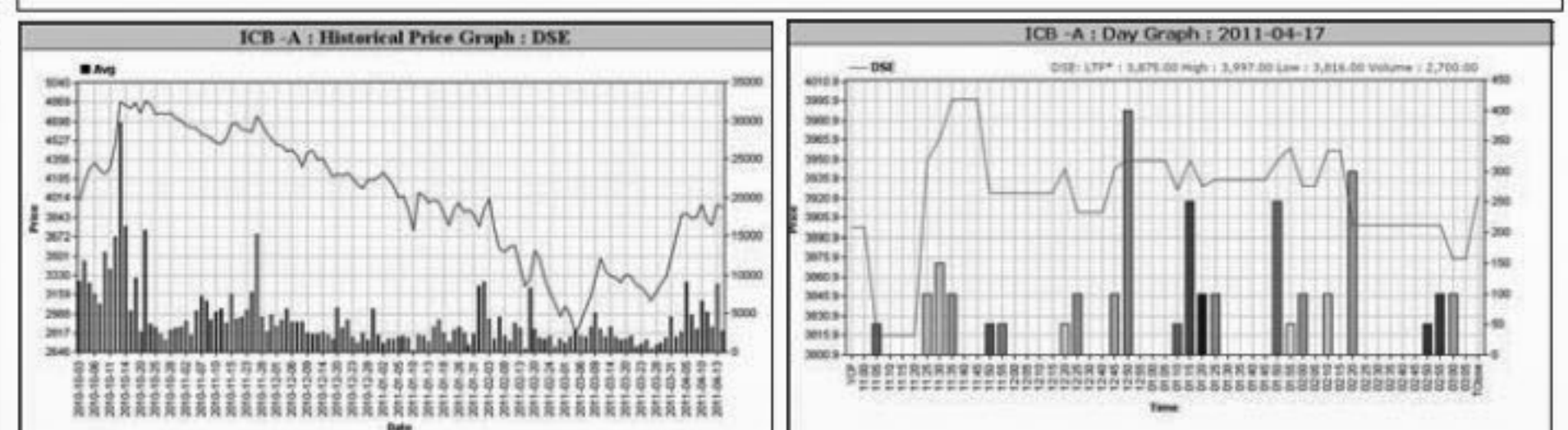
Chittagong Stock Exchange

Table of top turnover leaders from the Chittagong Stock Exchange, listing companies like Aftab Auto and BEXIMCO.



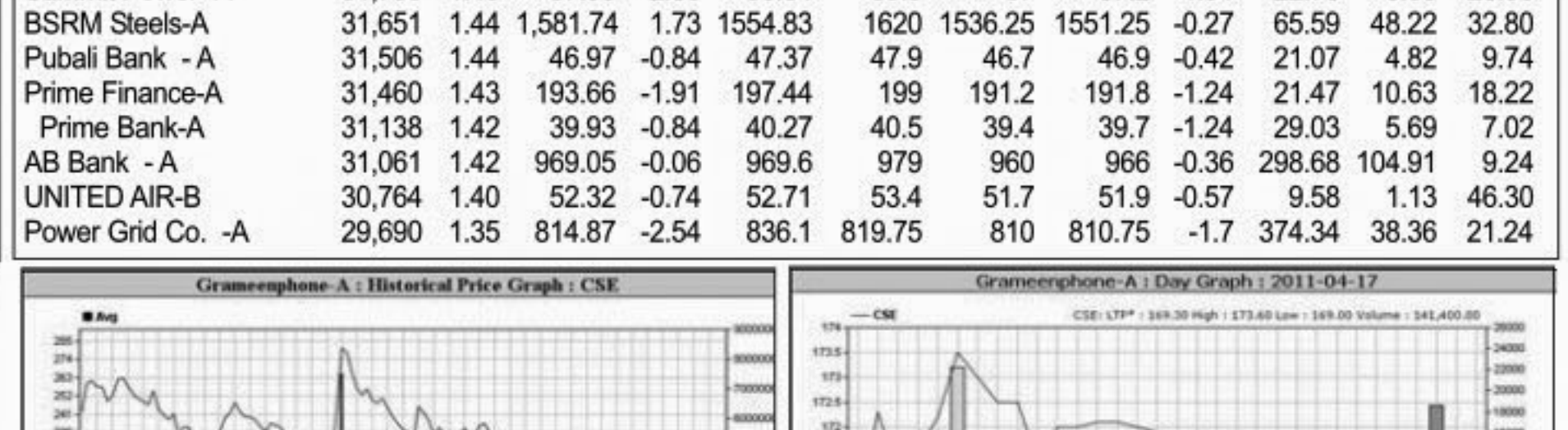
Market Cap. Leader

Table of market capitalization leaders from the Dhaka Stock Exchange, listing companies like Grameenphone and ICB.



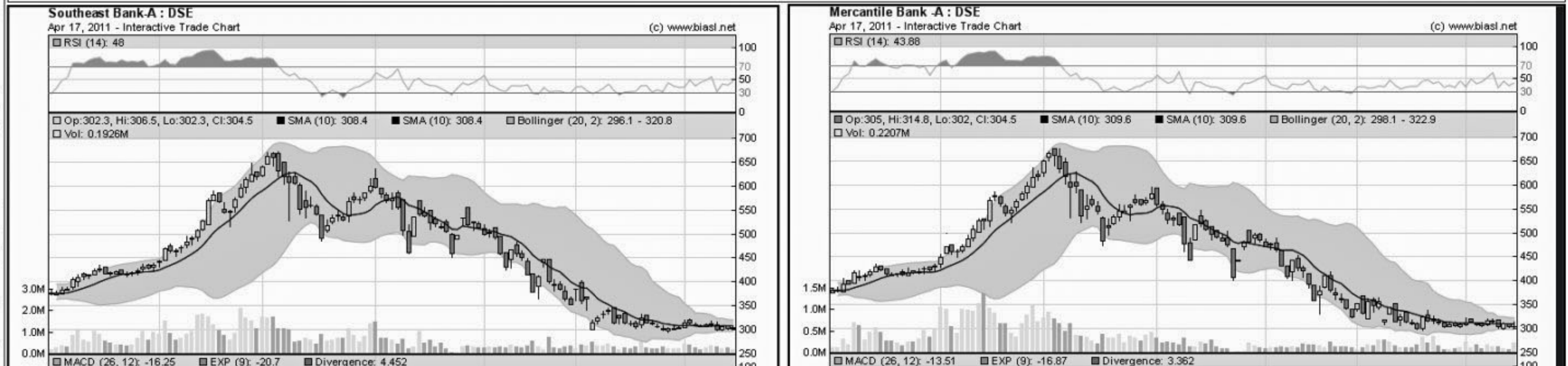
Chittagong Stock Exchange

Table of market capitalization leaders from the Chittagong Stock Exchange, listing companies like Grameenphone and ICB.



When to buy or sell

Investors follow many calculations of corporate performance when deciding if a stock is undervalued or overvalued. These range from the simple price-earnings ratio, or P/E, to far more technical ways of attempting to discern whether a stock is trending up or down.



Notes: Capital Gainer / Loser tables are prepared on the basis of the close price change of the traded issues. "Close" or "C.Price" is the Closing Price of the day. "Chn %" indicates the price difference in percentage.