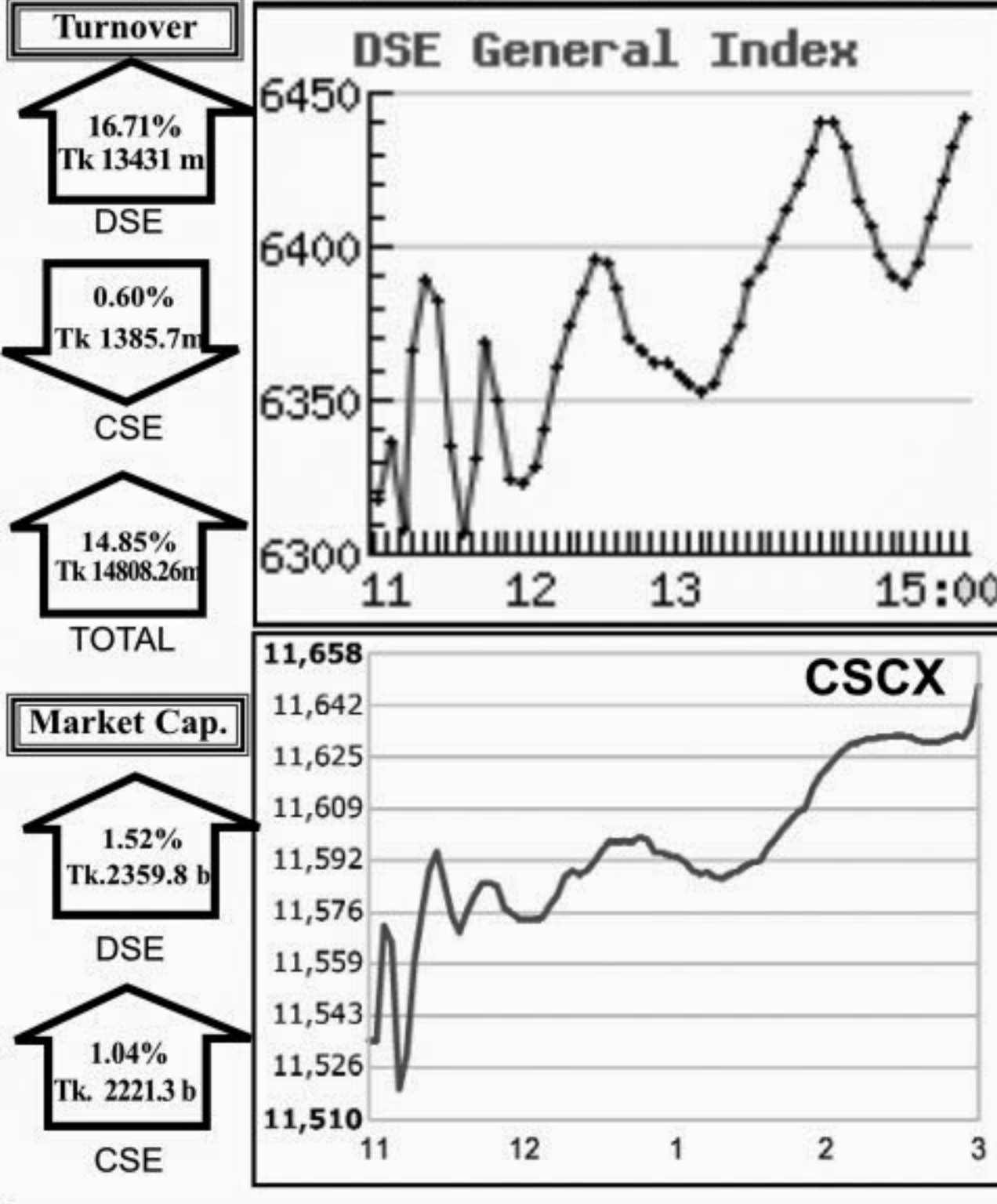


### Capital Market Highlights: March 16, 2011

INDEX			
	All Share	DSE General	DSE 20
DSE	5307.40164 (+1.49%)	4115.28871 (+1.28%)	6411.91628 (+1.48%)
CSE			
	All Share	CSE CSCX	CSE 30
CSE	17996.3453 (+1.21%)	15711.0990 (+0.22%)	11647.9662 (+1.21%)



### Key Features - March 16

Indicators	DSE	CSE	TOTAL
Turnover (Million Taka)	13,430.85	1,377.41	14,808.26
Turnover (Volume)	122,668,865	14,716,173	137,385,038
No. of Contract	236,035	38,886	274,921
Traded Issues	256	198	256
Issue Gain (Avg. Price Basis)	131	98	131
Issue Loss (Avg. Price Basis)	124	100	124
Unchanged Issue (Avg. Price Basis)	1	-	1
Market Cap. Equity (Billion Tk.)	2,359.81	2,221.26	2,359.81
Market Cap. Equity (Billion US\$)	34.45	32.43	34.45

### Combined Turnover Leaders

Company	Volume (Share)	Value (M. Taka)	% of Total	Average Price
BEXIMCO Ltd. -A	2413060	724.53	4.89	300.25
Singer BD -A	77907	597.46	4.03	7668.86
Maksons Spinning-A	9507475	559.84	3.78	58.88
BEXTEX Ltd. -A	7998210	526.91	3.56	65.88
Aftab Auto.-A	1643507	485.01	3.28	295.11
People's Leasing-A	1558000	449.06	3.03	288.23
UNITED AIR-B	6990580	433.31	2.93	61.99
ConfidenceCement A	1283330	333.25	2.25	259.68
Golden Son -A	3493747	298.96	2.02	85.57
Keya Cosmetics -A	2584300	266.27	1.80	103.03
Shinepukur Ceramics-A	2757345	260.16	1.76	94.35
Deshbandhu Polymer-N	2845500	241.62	1.63	84.91
Premier Bank -A	4599890	237.56	1.60	51.65
Union Capital -A	1032130	232.28	1.57	225.05
Beximco Pharma -A	1853870	225.72	1.52	121.76
Grameenphone-A	1103735	196.81	1.33	178.32
Social Islami. B-A	4055035	186.32	1.26	45.95
R. N. Spinning-A	1707750	183.97	1.24	107.72
Pubali Bank -A	3070790	172.05	1.16	56.03
Fu-wang Ceramic-A	399225	161.79	1.09	405.26
Eastland Insur -A	106769	158.47	1.07	1484.19
National Bank -A	2373620	157.57	1.06	66.38
AB Bank -A	134559	147.96	1.00	1099.62
Bay Leasing-A	80902	147.46	1.00	1822.76
Meghna Life Ins. -A	428550	146.03	0.99	340.76
EXIM Bank-A	2891103	145.45	0.98	50.31
Malek Spinning-A	1857000	145.17	0.98	78.18
Fu-wang Food A	2436290	144.60	0.98	59.35
UCBL -A	1690370	140.83	0.95	83.32
Titas Gas TDCLA	182844	140.83	0.95	770.2

### Sectoral Turnover Summary

Sector	DSE		CSE		Total	
	Mill. (Tk)	%	Mill. Tk.	%	Mill. Tk.	%
Bank	2130.49	15.86	358.43	26.02	2488.91	16.81
NBFI	1500.26	11.17	104.64	7.60	1604.89	10.84
Investment	228.45	1.70	22.02	1.60	250.47	1.69
Engineering	1864.64	13.88	186.92	13.57	2051.56	13.85
Food & Allied	299.65	2.23	20.84	1.51	320.49	2.16
Fuel & Power	608.28	4.53	46.00	3.34	654.28	4.42
Jute	3.39	0.03	11.83	0.87	15.22	0.10
Textile	1697.52	12.64	162.94	11.86	1860.46	12.56
Pharma & Chemical	795.77	5.92	56.04	4.15	851.81	5.75
Paper & Packaging	3.25	0.02	2.06	0.15	5.31	0.04
Service	135.23	1.01	23.77	1.76	159.00	1.07
Leather	38.48	0.29	1.26	0.09	39.73	0.27
Ceramic	440.78	3.28	27.24	3.93	468.02	3.16
Cement	457.56	3.41	54.14	3.88	511.70	3.46
Information Technology	71.59	0.53	12.17	0.89	83.76	0.57
General Insurance	1416.47	10.55	85.14	6.21	1501.60	10.14
Life Insurance	479.99	3.57	16.67	1.22	496.66	3.35
Telecom	154.71	1.15	42.11	3.09	196.81	1.33
Travel & Leisure	362.33	2.70	70.99	5.14	433.31	2.93
Miscellaneous	723.50	5.39	83.84	6.12	807.33	5.45
Debtenture	18.53	0.14	0.22	0.00	18.75	0.13

### Sectoral P/E & EPS

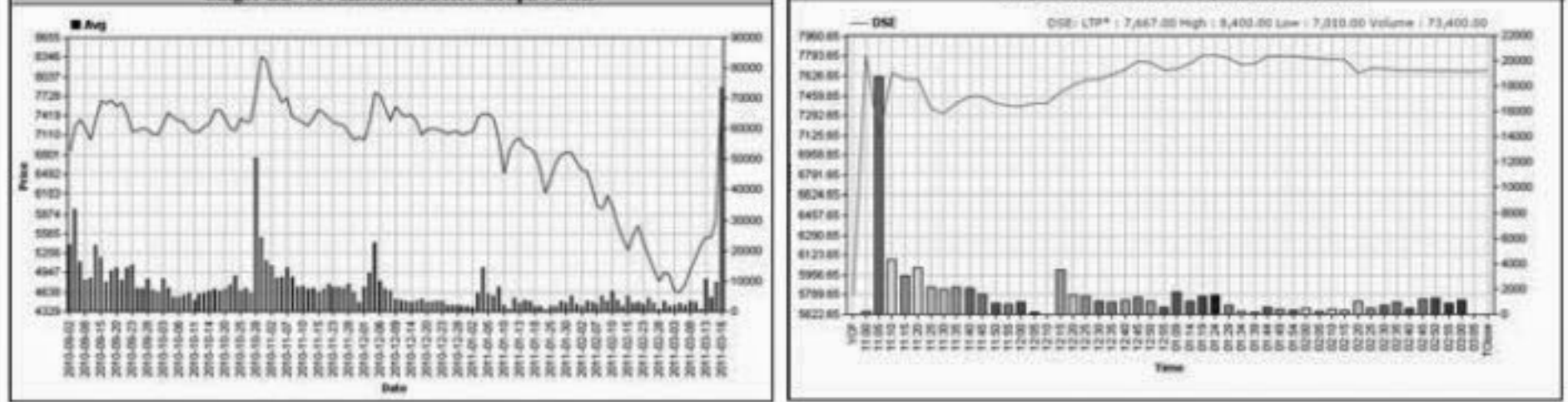
Sector	P/E		EPS(%)	
	DSE	CSE	DSE	CSE
Bank	12.72	12.74	45.06	45.06
NBFI	38.26	38.27	44.53	45.11
Investment	35.07	32.77	35.57	35.57
Engineering	33.30	34.64	45.82	42.94
Food & Allied	17.90	17.83	138.57	151.73
Fuel & Power	17.56	17.51	53.06	53.06
Textile	36.96	37.00	19.61	19.63
Pharma. & Chemical	29.03	29.14	72.37	62.14
Paper & Printing	51.00	54.11	8.48	9.01
Service	31.05	31.01	35.68	35.68
Leather	16.93	17.40	86.73	104.80
Ceramic	50.18	50.28	19.99	19.99
Cement	26.09	26.38	30.22	30.22
IT	29.46	29.51	12.44	12.44
General Insurance	45.81	44.08	23.36	24.35
Life Insurance	47.11	47.94	96.13	96.13
Telecom	22.50	22.44	79.30	79.30
Travel & Leisure	284.09	823.97	2.06	0.75
Miscellaneous	16.09	16.14	155.10	146.10
Stock Exchanges	20.44	20.24	46.17	45.96

Prepared exclusively for Daily Star by Business Information Automation Service Line (BIASL) on the basis of information collected from daily stock quotations and audited reports of the listed companies. High level of caution has been taken to collect and present the above information and data. The publisher will not take any responsibility if any body uses this information and data for his/her investment decision. For any query please email to biasl@bol-online.com or call 01552153562 or go to www.biasl.net

### Capital Gainers

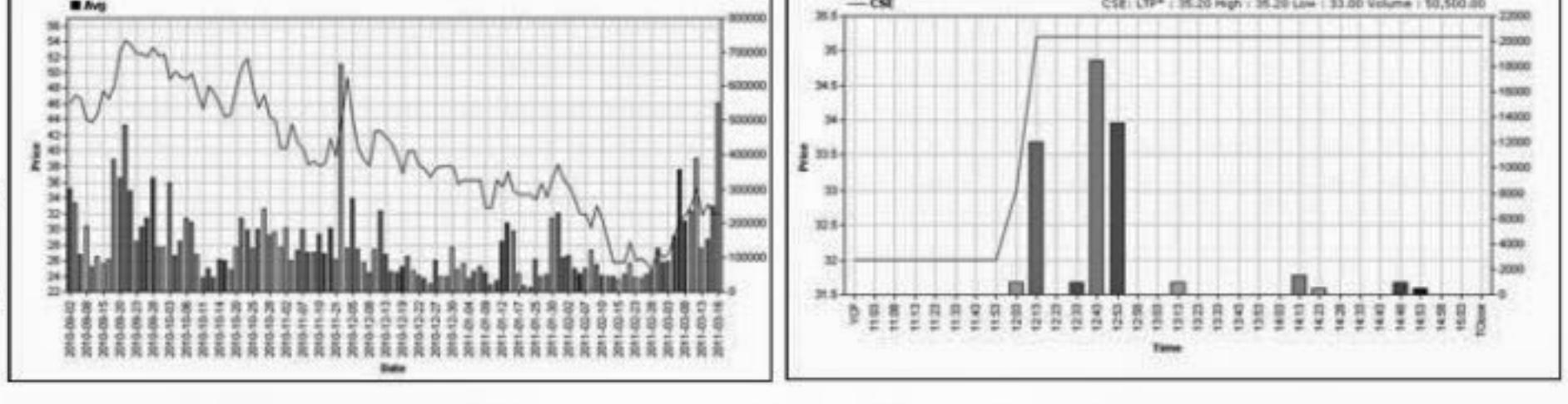
#### Dhaka Stock Exchange

Company	Price Chn. (%)		Price Scale				Turnover		BookV		PE	
	Close	Avg.	Avg.	DayHi	DayLo	Yr Hi	YrLo	M.Tk	Per S	EPS		
Singer BD -A	32.56	32.58	7,668.52	7,675.00	8,400.00	7,010.00	8,422.53	5002.0	562.885	481.68	176.83	43.37
Sinobangla Indu.-B	10.00	5.99	71.15	73.70	73.70	66.60	94.9	40.3	51.439	23.34	2.38	29.89
Prime Insur -A	9.98	6.76	117.12	119.00	119.00	107.60	195.00	58.6	86.988	12.33	3.11	37.66
CMC Kamal Tex.-A	9.97	9.97	82.65	82.70	82.70	80.00	168.00	37.0	22.143	15.17	0.31	266.61
Keya Detergent-A	9.97	3.45	79.77	82.70	82.70	75.00	129.00	54.9	58.232	19.37	2.4	33.24
Fu-Wang Food A	9.95	6.71	59.35	60.80	60.80	54.50	129.8	36.4	133.263	10.89	0.6	98.92
City G Insu.-A	9.95	6.01	119.06	121.60	121.60	107.10	1694.00	64.1	82.529	12.51	1.36	87.54
Peoples Insur -A	9.92	5.29	78.04	80.90	80.90	72.70	1210.00	46.2	80.640	15.58	1.51	51.68
Kamaphuli Insur -A	9.83	4.65	87.80	90.50	90.50	81.00	1150.00	50.0	119.522	13.65	1.76	49.89
Fine Foods A	9.80	4.03	75.97	77.30	77.40	69.00	142.00	44.3	33.985	11.41	2.49	30.51



### Chittagong Stock Exchange

Company	Price Chn. (%)		Price Scale				Turnover		BookV		PE	
	Close	Avg.	Avg.	DayHi	DayLo	Yr Hi	YrLo	M.Tk	Per S	EPS		
Singer BD -A	34.75	34.02	7674.47	7710.50	9000.00	7300.00	9000.00	700.0	34.573	481.68	176.83	43.40
Miracle Industries -B	10.00	9.52	35.09	35.20	35.20	33.00	56.0	24.1	1.772	16.05	0.87	40.33
Prime Insur -A	9.99	9.99	92.50	92.50	92.50	92.50	1998.00	58.0	0.023	12.33	3.11	29.74
Active Fine Chem.-N	9.88	6.86	99.10	102.30	102.40	93.00	181.0	52.0	16.599	0	0	-
Fu-Wang Food A	9.84	7.60	59.33	60.30	60.30	54.10	129.00	36.0	11.339	10.89	0.6	98.88
Keya Detergent-A	9.83	6.32	81.28	82.70	82.80	77.30	128.9	55.1	6.543	19.37	2.4	33.87
Rupali Insur -A	9.28	8.64	167.94	169.50	170.60	160.00	2051.00	87.2	1.780	43.99	2.45	68.55
ConfidenceCement A	8.73	6.51	258.89	262.80	262.80	240.00	3455.00	18.0	38.015	92.26	5.72	45.26
MeghnaCement -A	8.73	7.60	296.45	300.30	300.30	273.00	2865.00	147.0	9.990	29.91	5.87	50.50
Hakkani P& Paper-B	8.21	6.34	50.14	50.10	50.90	47.80	90.0	34.5	2.056	12.38	0.52	96.42



### Turnover Leaders

#### Dhaka Stock Exchange

Company	Vol. Share	Value (M.Tk.)	% of Total	Price Scale			C.Pct	BookV	P.E			
				Avg. Close	DayHi	DayLo						
BEXIMCO Ltd. -A	2147973	645.231	4.80	300.39	303.20	304.50	294.10	2.57	63.73	20.38	14.74	
Singer BD -A	73402	562.885	4.19	1000	7668.52	7675.00	8400.00	7010.00	32.56	481.68	176.83	43.37
Maksons Spinning-A	8467375	498.719	3.71	28000	58.90	59.80	60.80	55.10	5.47	20.78	4.06	14.51
BEXTEX Ltd. -A	7268150	478.890	3.57	100000	65.89	66.10	67.00	64.10	1.85	22.81	2	32.95
People's Leasing-A	1455700	419.559	3.12	6900	288.22	286.90	293.80	285.00	-0.55	12.32	3.56	80.96
Aftab Auto.-A	1401357	413.473	3.08	8900	295.05	296.20	302.00	288.50	0.30	55.51	15.08	19.57
UNITED AIR-B	5846620	362.326	2.70	17500	61.97	62.60	63.60	59.70	2.79	9.58	1.13	54.84
ConfidenceCement A	1136490	295.237	2.20	10000	259.78	264.20	264.20	242.00	8.72	92.26	5.72	45.42
Golden Son -A	3360747	287.636	2.14	20000	85.59	87.20	88.00	80.20	7.52	24.7	1.08	79.25
Keya Cosmetics -A	2493800	257.043	1.91	12500	103.07	105.70	105.90	96.00	9.76	19.11	3.01	34.24
Shinepukur Ceramics-A	2652116	250.234	1.86	11400	94.35	95.50	96.70	91.00	3.92	25.65	1.78	53.01
Union Capital -A	4157550	221.004	1.65	10000	225.03	227.30	228.40	220.15	1.65	11.91	3.56	63.21
Premier Bank -A	982130	214.73										