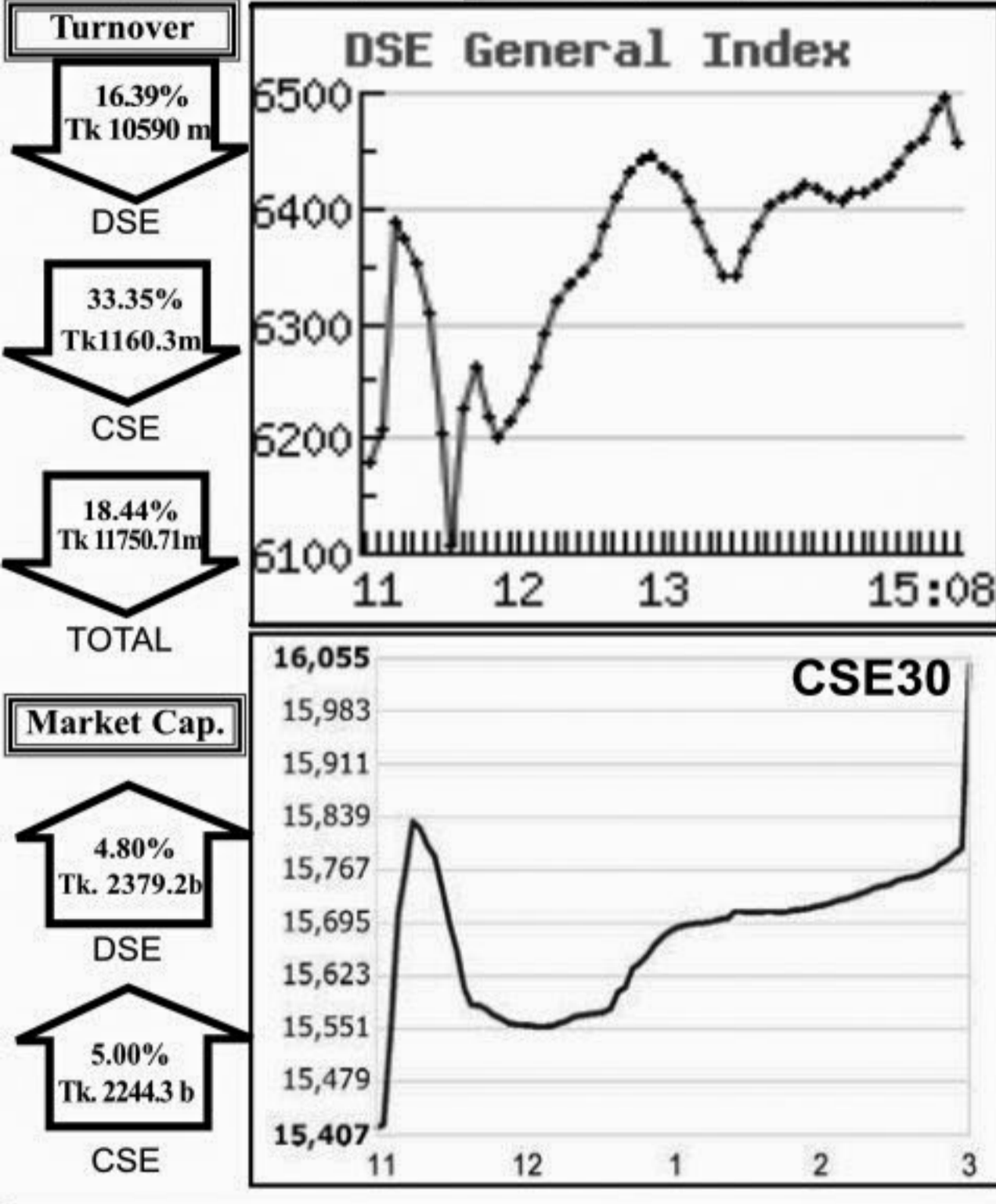


Capital Market Highlights: March 14, 2011

INDEX		
DSE	All Share	DSE General
	5346.45494 (+) 4.46%	6457.98383 (+) 4.51%
CSE	All Share	CSE 30
	18190.3815 (+) 4.56%	16045.4926 (+) 3.85%



Key Features - March 14

Indicators	DSE	CSE	TOTAL
Turnover (Million Taka)	10,590.38	1,160.33	11,750.71
Turnover (Volume)	99,880,913	12,836,794	112,717,707
No. of Contract	206,660	35,085	241,745
Traded Issues	254	188	254
Issue Gain (Avg. Price Basis)	152	121	152
Issue Loss (Avg. Price Basis)	101	67	101
Unchanged Issue (Avg. Price Basis)	1	-	1
Market Cap. Equity (Billion Tk.)	2,379.17	2,244.30	2,379.17
Market Cap. Equity (Billion US\$)	34.73	32.76	34.73

Combined Turnover Leaders

Company	Volume (Share)	Value (M. Taka)	% of Total	Average Price
People's Leasing-A	2015200	558.65	4.75	277.22
BEXIMCO Ltd. -A	1872737	551.96	4.70	294.73
BEXTEX Ltd. -A	8048490	519.60	4.42	64.56
UNITED AIR-B	7953660	477.71	4.07	60.06
Aftab Auto.-A	1677235	471.46	4.01	281.09
Maksons Spinning-A	5454125	305.68	2.60	56.05
Uttara Bank -A	2652100	249.95	2.13	94.25
Pubali Bank -A	3189350	245.20	2.09	76.88
Union Capital -A	1038500	228.41	1.94	219.94
Grameenphone-A	1255684	226.82	1.93	180.63
Shinepukur Ceramics-A	2276286	206.36	1.76	90.66
R. N. Spinning-A	1963350	198.93	1.69	101.32
AB Bank -A	169171	188.95	1.61	1116.9
Premier Bank -A	3301180	187.57	1.60	56.82
UCBL -A	2105740	179.85	1.53	85.41
National Bank -A	2593200	179.07	1.52	69.05
N C Bank -A	3090170	173.40	1.48	56.11
Golden Son -A	2079498	171.42	1.46	82.43
Beximco Pharma -A	1363716	166.69	1.42	122.23
IDLC Finance -A	60924	162.94	1.39	2674.53
BATBCL -A	220375	155.69	1.33	706.5
Titas Gas TDCLA	186020	145.20	1.24	780.55
ConfidenceCement A	595310	136.65	1.16	229.54
Deshbandhu Polymer-N	1719500	136.65	1.16	79.47
Far Leasing -A	73150	135.76	1.16	1855.85
Malek Spinning-A	1721000	129.87	1.11	75.46
Summit Power -A	1057934	126.08	1.07	119.18
Al Arafia Islami B-A	2355000	123.32	1.05	52.36
Khulna Power-A	1108314	117.23	1.00	105.78
EXIM Bank-A	2227570	116.13	0.99	52.13

Sectoral Turnover Summary

Sector	DSE		CSE		Total	
	Mill. (Tk.)	%	Mill. Tk.	%	Mill. Tk.	%
Bank	2350.06	22.19	364.49	31.41	2714.55	23.10
NBFI	1553.56	14.67	104.36	8.99	1657.93	14.11
Investment	215.44	2.03	18.96	1.63	234.40	1.99
Engineering	1052.67	9.94	115.06	9.92	1167.73	9.94
Food & Allied	284.97	2.69	10.47	0.90	295.45	2.51
Fuel & Power	609.89	5.76	55.88	4.82	665.77	5.67
Jute	1.50	0.01	13.88	1.20	15.38	0.13
Textile	1373.68	12.97	161.04	13.98	1534.72	13.06
Pharma & Chemical	470.14	4.44	27.20	2.36	497.34	4.23
Paper & Packaging	1.88	0.02	0.73	0.06	2.61	0.02
Service	99.46	0.94	22.93	2.00	122.39	1.04
Leather	61.28	0.58	0.41	0.03	61.69	0.53
Ceramic	294.47	2.78	21.45	1.87	315.92	2.69
Cement	185.33	1.75	25.60	2.21	210.93	1.80
Information Technology	64.23	0.61	14.73	1.25	78.96	0.67
General Insurance	549.49	5.19	29.55	0.81	579.04	4.93
Life Insurance	294.71	2.78	9.44	0.81	304.15	2.59
Telecom	187.89	1.77	38.93	3.35	226.82	1.93
Travel & Leisure	40.23	0.38	74.48	6.42	114.71	0.97
Miscellaneous	531.03	5.01	64.57	5.56	595.60	5.07
Debtenture	5.45	0.05	0.04	0.00	5.50	0.05

Sectoral P/E & EPS

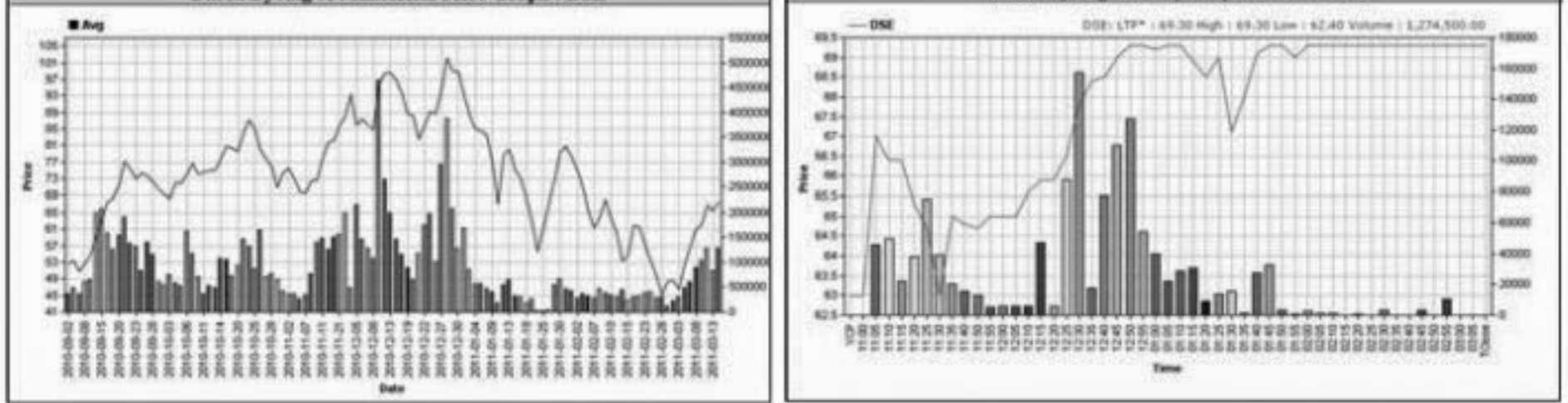
Sector	P/E		EPS(%)	
	DSE	CSE	DSE	CSE
Bank	13.03	13.07	45.73	45.73
NBFI	38.26	38.16	44.53	45.11
Investment	35.68	35.31	35.57	35.57
Engineering	31.15	31.96	45.82	42.94
Food & Allied	17.85	17.72	138.57	151.73
Fuel & Power	17.67	17.63	52.71	52.71
Textile	35.58	35.91	19.61	19.63
Pharma. & Chemical	29.03	28.96	72.37	62.14
Paper & Printing	48.65	51.09	8.48	9.01
Service	30.76	30.73	35.68	35.68
Leather	16.85	16.82	86.73	104.80
Ceramic	49.93	49.80	19.99	19.99
Cement	25.28	25.25	30.22	30.22
IT	29.37	29.31	12.44	12.44
General Insurance	41.25	39.58	23.36	24.35
Life Insurance	45.34	46.27	96.13	96.13
Telecom	22.78	22.79	79.30	79.30
Travel & Leisure	275.59	795.55	2.06	0.75
Miscellaneous	15.82	15.84	155.10	146.10
Stock Exchanges	20.40	20.24	46.46	46.26

Prepared exclusively for Daily Star by Business Information Automation Service Line (BIASL), on the basis of information collected from daily stock quotations and audited reports of the listed companies. High level of caution has been taken to collect and present the above information and data. The publisher will not take any responsibility if any body uses this information and data for his/her investment decision. For any query please email to biasl@bol-online.com or call 01552153562 or go to www.biasl.net

Capital Gainers

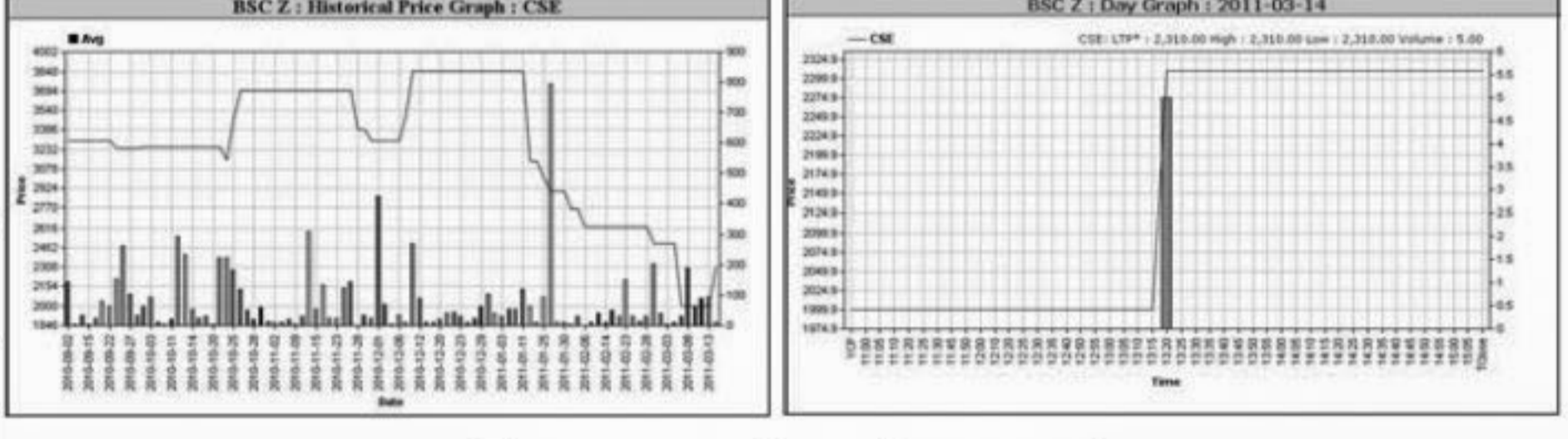
Dhaka Stock Exchange

Company	Price Chn. (%)		Price Scale				Turnover		BookV			
	Close	Avg.	Avg.	Close	DayHi	DayLo	Yr Hi	YrLo	M.Tk	Per S	EPS	PE
Dacca Dyeing-A	10.00	3.10	67.55	69.30	69.30	62.40	105.00	32.1	86.133	12.88	1.34	50.41
Active Fine Chem.-N	9.99	1.78	84.28	85.90	85.90	78.80	180.00	50.0	49.684	0	0	-
CMC Kamal Tex. -A	9.97	1.37	67.86	68.40	68.40	63.30	1680.00	37.0	44.927	15.17	0.31	218.90
Keya Detergent-A	9.97	3.43	74.12	76.10	76.10	69.00	129.00	54.9	28.426	19.37	2.4	30.88
R. N. Spinning-A	9.95	3.12	101.32	103.90	103.90	94.30	835.00	63.0	182.074	11.06	1.62	62.54
Malek Spinning-A	9.94	3.17	75.42	77.40	77.40	71.00	117.50	49.5	116.715	35.64	1.51	49.95
BD Finance-A	9.91	1.68	180.71	186.40	186.50	169.30	2189.00	131.0	82.153	12.53	1.83	98.75
Deshbandhu Polymer-N	9.89	3.22	79.51	81.10	81.10	74.50	90.00	46.0	126.018	13.63	3.47	22.91
Shinepukur Ceramics-A	9.88	2.65	90.63	93.40	93.50	85.00	126.00	62.2	196.554	25.65	1.78	50.92
Sinobangla Indu.-B	9.87	4.17	60.23	61.20	61.20	56.00	94.90	40.3	27.345	23.34	2.38	25.31



Chittagong Stock Exchange

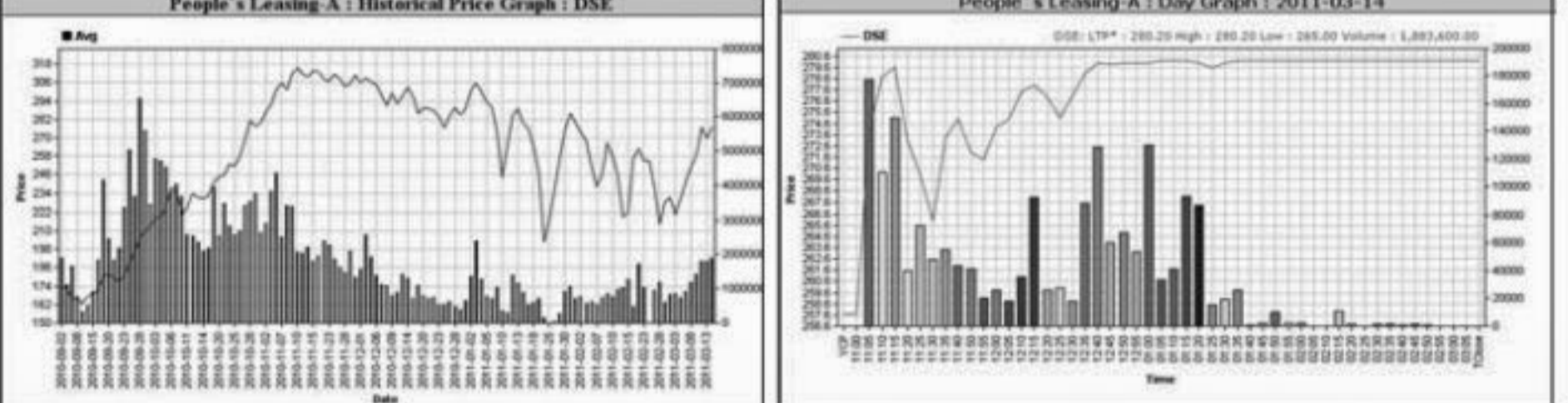
Company	Vol.	Value	% of Total	Average Price
BSC-A	15.50	2310.00	2310.00	3926.00
Deshbandhu Polymer-N	9.99	3.64	79.06	80.40
Shinepukur Ceramics-A	9.92	3.97	91.13	93.10
Dacca Dyeing-A	9.87	3.63	67.66	69.00
City G Insu.-A	9.80	6.27	106.28	108.70
R. N. Spinning-A	9.80	3.67	101.34	103.20
Rupali Insur-A	9.58	5.63	142.49	143.00
Sinobangla Indu.-B	9.11	7.32	61.10	61.10
Anima Yam -A	8.60	7.28	305.66	309.75
Tallu Spinning -A	8.54	3.91	445.00	445.00



Turnover Leaders

Dhaka Stock Exchange

Company	Vol. Share	Value (M. Tk.)	% of Total	Price Scale			C. Pibe	BookV
				Avg. Close	DayHi	DayLo		
People's Leasing-A	1883600	522.388	4.93	277.33	280.20	280.20	8.73	12.32
BEXIMCO Ltd. -A	1659857	489.393	4.62	294.84	300.30	300.30	6.53	63.73
BEXTEX Ltd. -A	6993490	451.431	4.26	64.55	66.80	67.30	9.15	22.81
Aftab Auto.-A	1451860	408.222	3.85	281.17	287.30	287.30	265.00	8.74
UNITED AIR-B	6710540	403.234	3.81	60.09	61.80	62.00	55.80	9.57
Maksons Spinning-A	4722250	264.597	2.50	56.03	57.50	57.50	52.30	9.78
Pubali Bank -A	2930205	225.245	2.13	76.87	77.90	79.80	72.20	10.41
Union Capital -A	994500	218.673	2.06	219.88	223.30	223.30	207.00	8.66
Uttara Bank -A	2285700	214.890	2.03	94.01	101.10	103.00	80.00	7.76
Shinepukur Ceramics-A	2168711	196.554	1.86	90.63	93.40	93.50	85.00	9.88
Grameenphone-A	1040284	187.889	1.77	180.61	184.20	185.00	174.20	7.03
R. N. Spinning-A	1797050	182.074	1.72	101.32	103.90	103.90	94.30	9.95
Premier Bank -A	3008900	170.999	1.61	56.83	58.20	58.90	51.10	8.18
Golden Son -A	1990998	164.170	1.55	82.46	84.30	84.40	77.00	9.77
Beximco Pharma -A	4722250	159.157	1.50	122.22	124.30	125.90	116.50	9.49
National Bank -A	2278900	157.230	1.48	68.99	70.40	71.10	66.00	6.18
BATBCL -A	217300	153.582	1.45	706.48	710.30	719.00	685.00	10.71
IDLC Finance -A	57342	153.064	1.45	2674.86	2718.25	2730.00	2538.00	3.99
AB Bank -A	137041	153.882	1.45	1116.92	1123.00	1142.00	1060.00	3.67
N C Bank -A	2624520	147.337	1.39	56.14	56.90	57.00	52.40	9.63



Chittagong Stock Exchange

Company	Vol.	Value	% of Total	Average Price
UNITED AIR-B	1243120	74.476	6.42	59.91
BEXTEX Ltd. -A	1055000	68.173	5.88	64.62
Aftab Auto.-A	225375	63.239	5.45	280.59
BEXIMCO Ltd. -A	212880	62.566	5.39	293.90
UCBL -A	546350	46.642	4.02	85.37
Maksons Spinning-A	713875	41.086	3.54	56.14
Grameenphone-A	215400	38.928	3.35	180.72
People's Leasing-A	131600	36.264	3.1	