

Capital Market Highlights: February 28, 2011

INDEX table showing All Share, DSE General, DSE 20, CSE All Share, CSE CSCX, CSE 30 with price changes and percentages.

Turnover table showing DSE (2.36% Tk 4894.2m), CSE (13.80% Tk 663.05m), and TOTAL (3.89% Tk 5557.24m).



Key Features - February 28 table with indicators like Turnover, No. of Contract, Traded Issues, etc.

Combined Turnover Leaders table listing top performing companies like BEXIMCO Ltd., People's Leasing-A, etc.

Market Cap. Leader table listing companies like Grameenphone-A, National Bank -A, etc.

Capital Gainers table listing top performing stocks like Kay & Que (BD) -B, Mercantile Insur -A, etc.

Capital Losers table listing underperforming stocks like Beach Hatchery -A, National Bank -A, etc.

Chittagong Stock Exchange table listing Continental Insur -A, The Ibm SinaA, etc.

Chittagong Stock Exchange table listing Sonargaon Tex -A, Talu Spinning -A, etc.

Chittagong Stock Exchange table listing Sonargaon Tex -A, Talu Spinning -A, etc.

Chittagong Stock Exchange table listing Sonargaon Tex -A, Talu Spinning -A, etc.

Chittagong Stock Exchange table listing Sonargaon Tex -A, Talu Spinning -A, etc.

Chittagong Stock Exchange table listing Sonargaon Tex -A, Talu Spinning -A, etc.

Chittagong Stock Exchange table listing Sonargaon Tex -A, Talu Spinning -A, etc.

Chittagong Stock Exchange table listing Sonargaon Tex -A, Talu Spinning -A, etc.

Chittagong Stock Exchange table listing Sonargaon Tex -A, Talu Spinning -A, etc.

Chittagong Stock Exchange table listing Sonargaon Tex -A, Talu Spinning -A, etc.

Chittagong Stock Exchange table listing Sonargaon Tex -A, Talu Spinning -A, etc.

Chittagong Stock Exchange table listing Sonargaon Tex -A, Talu Spinning -A, etc.

Chittagong Stock Exchange table listing Sonargaon Tex -A, Talu Spinning -A, etc.

Chittagong Stock Exchange table listing Sonargaon Tex -A, Talu Spinning -A, etc.

Chittagong Stock Exchange table listing Sonargaon Tex -A, Talu Spinning -A, etc.

Chittagong Stock Exchange table listing Sonargaon Tex -A, Talu Spinning -A, etc.

Chittagong Stock Exchange table listing Sonargaon Tex -A, Talu Spinning -A, etc.

Chittagong Stock Exchange table listing Sonargaon Tex -A, Talu Spinning -A, etc.

Chittagong Stock Exchange table listing Sonargaon Tex -A, Talu Spinning -A, etc.

Chittagong Stock Exchange table listing Sonargaon Tex -A, Talu Spinning -A, etc.

Chittagong Stock Exchange table listing Sonargaon Tex -A, Talu Spinning -A, etc.

Chittagong Stock Exchange table listing Sonargaon Tex -A, Talu Spinning -A, etc.

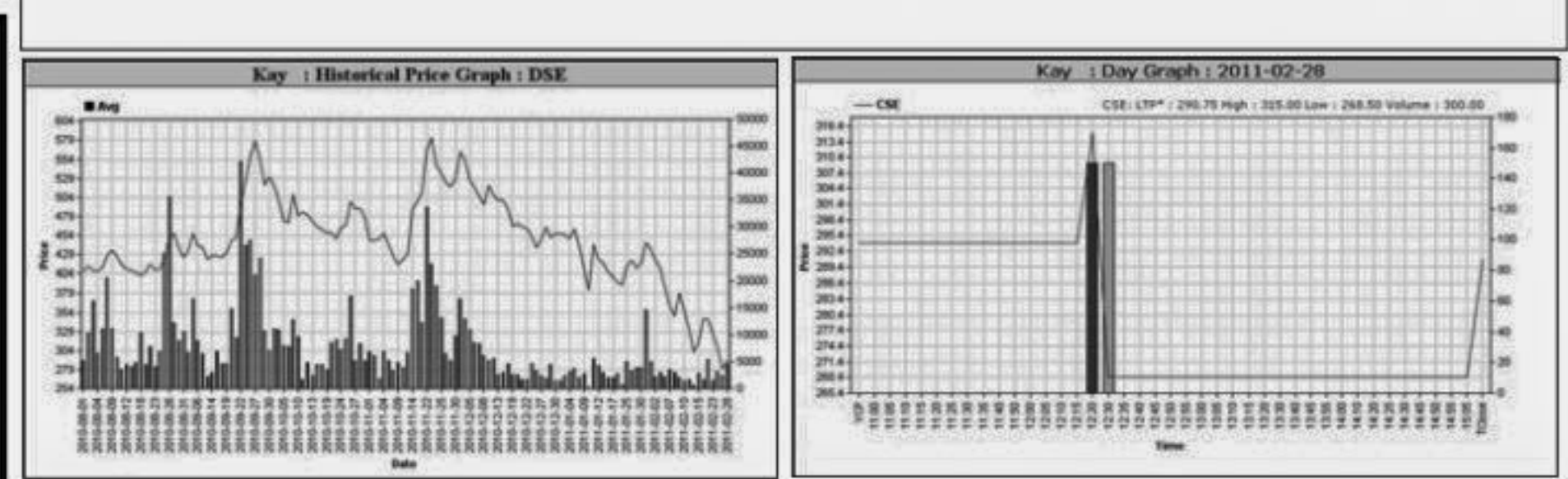
Chittagong Stock Exchange table listing Sonargaon Tex -A, Talu Spinning -A, etc.

Chittagong Stock Exchange table listing Sonargaon Tex -A, Talu Spinning -A, etc.

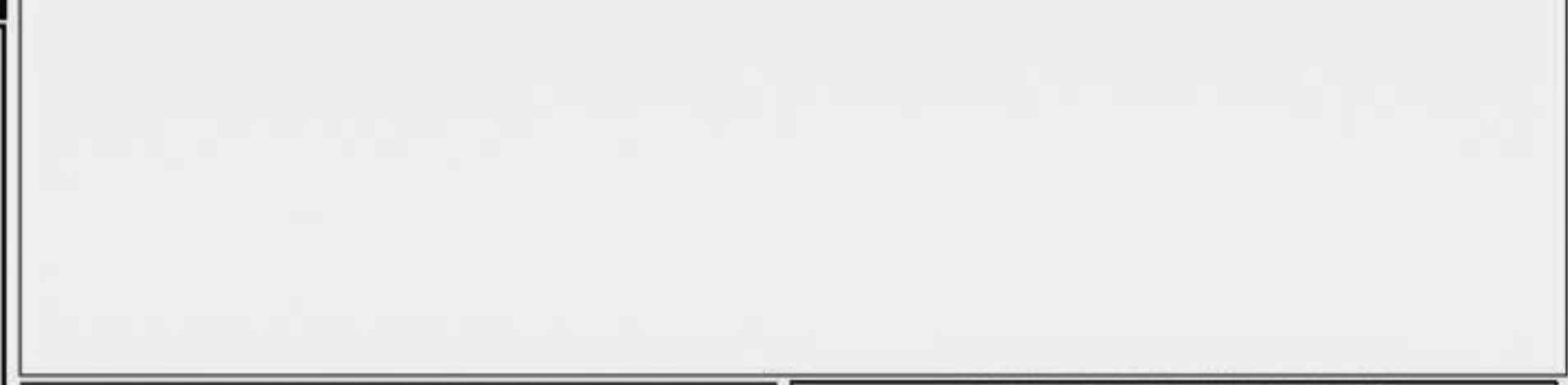
Chittagong Stock Exchange table listing Sonargaon Tex -A, Talu Spinning -A, etc.

Capital Gainers

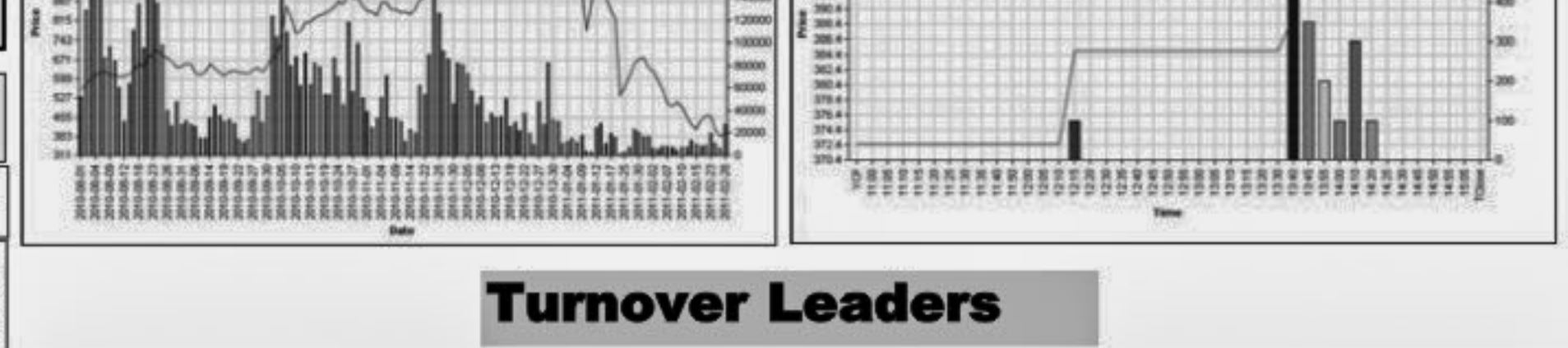
Dhaka Stock Exchange table listing Kay & Que (BD) -B, Mercantile Insur -A, Continental Insur -A, etc.



Chittagong Stock Exchange table listing Continental Insur -A, The Ibm SinaA, etc.

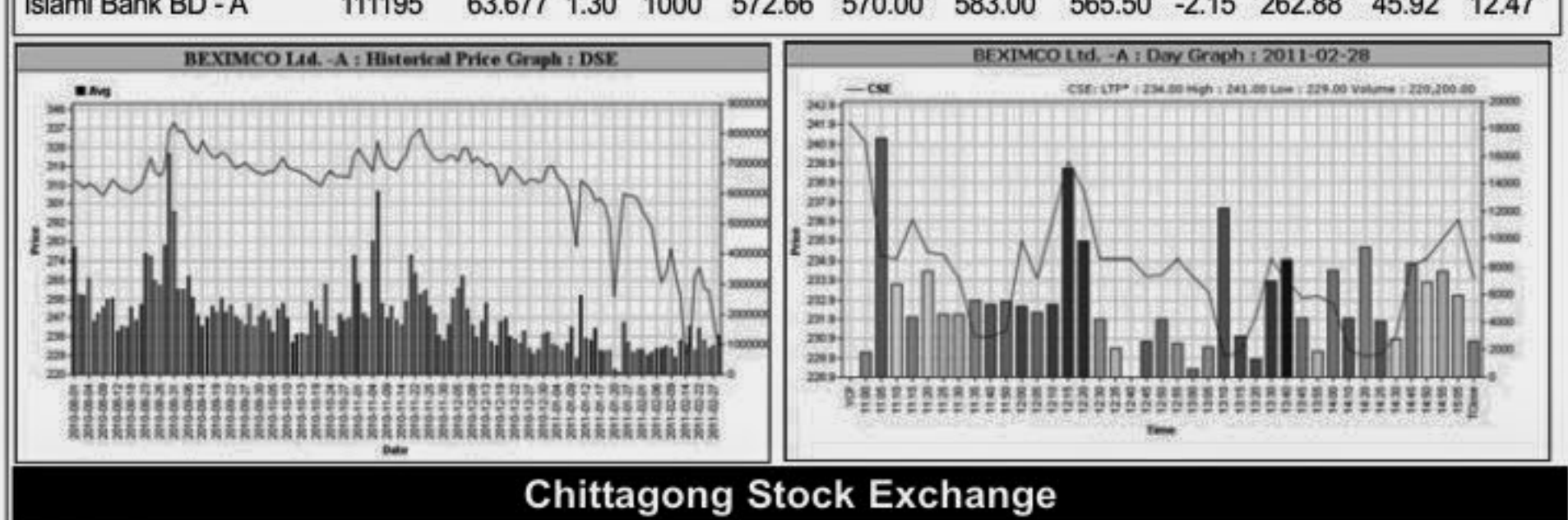


Chittagong Stock Exchange table listing Sonargaon Tex -A, Talu Spinning -A, etc.

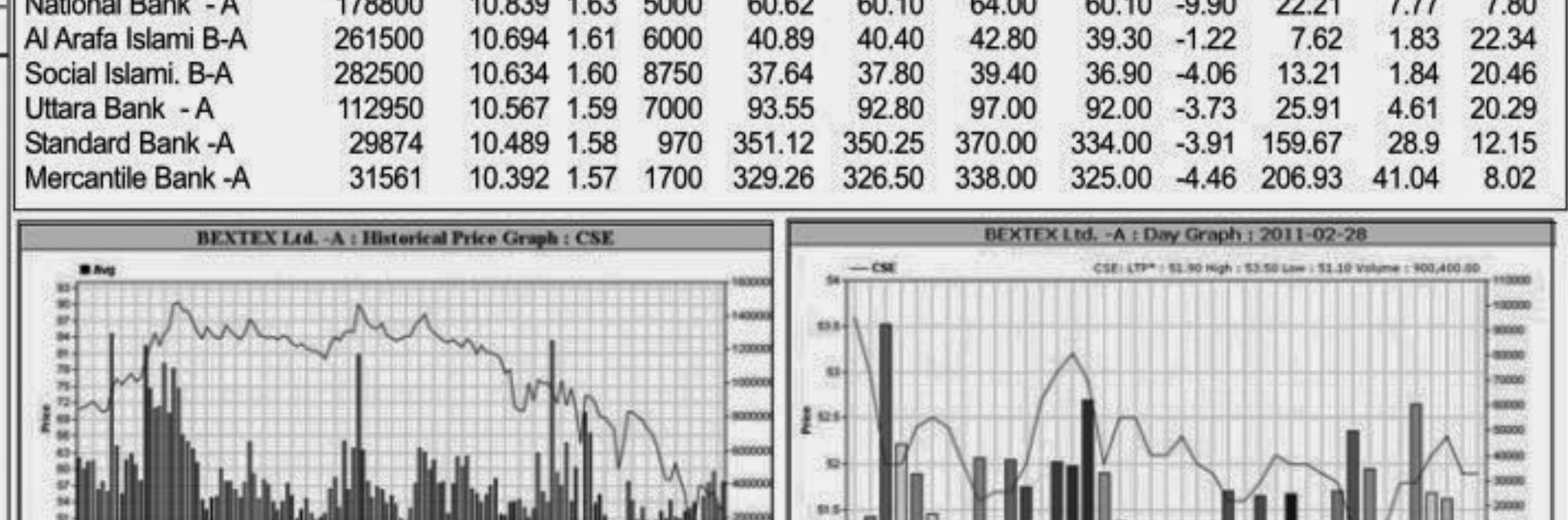


Turnover Leaders

Dhaka Stock Exchange table listing top turnover companies like BEXIMCO Ltd., People's Leasing-A, etc.



Chittagong Stock Exchange table listing top turnover companies like BEXIMCO Ltd., BEXTEX Ltd., etc.



When to buy or sell

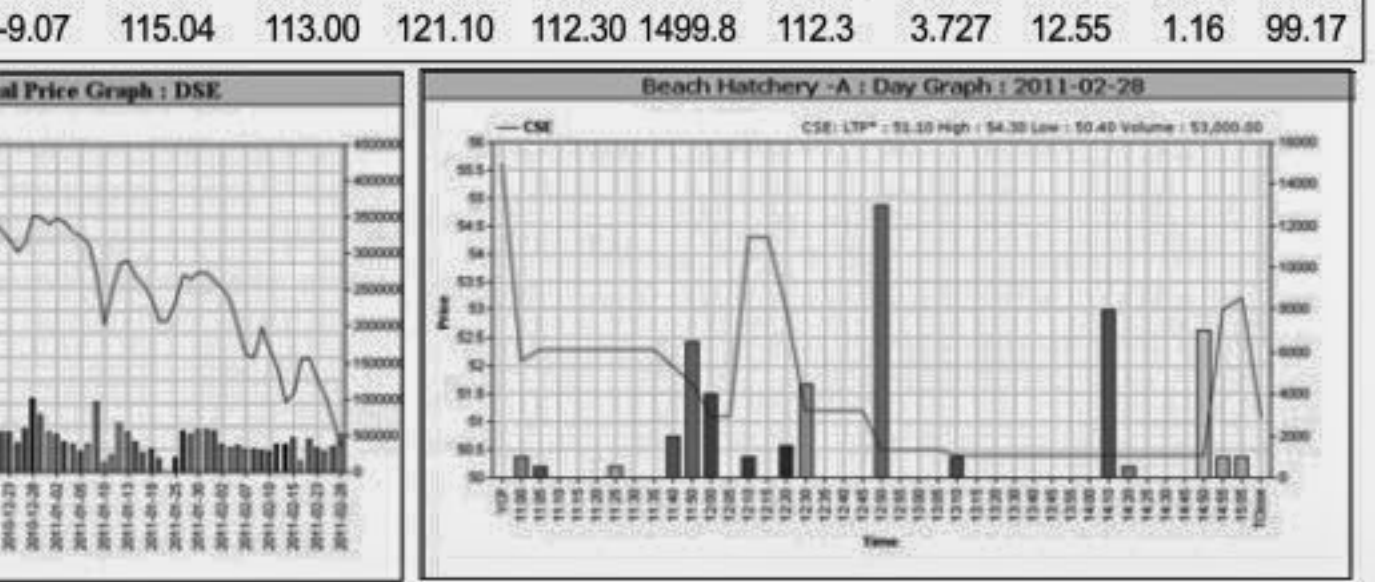
Investors follow many calculations of corporate performance when deciding if a stock is undervalued or overvalued. These range from the simple price-earnings ratio, or P/E, to far more technical ways of attempting to discern whether a stock is trending up or down. Here are some of the most common.



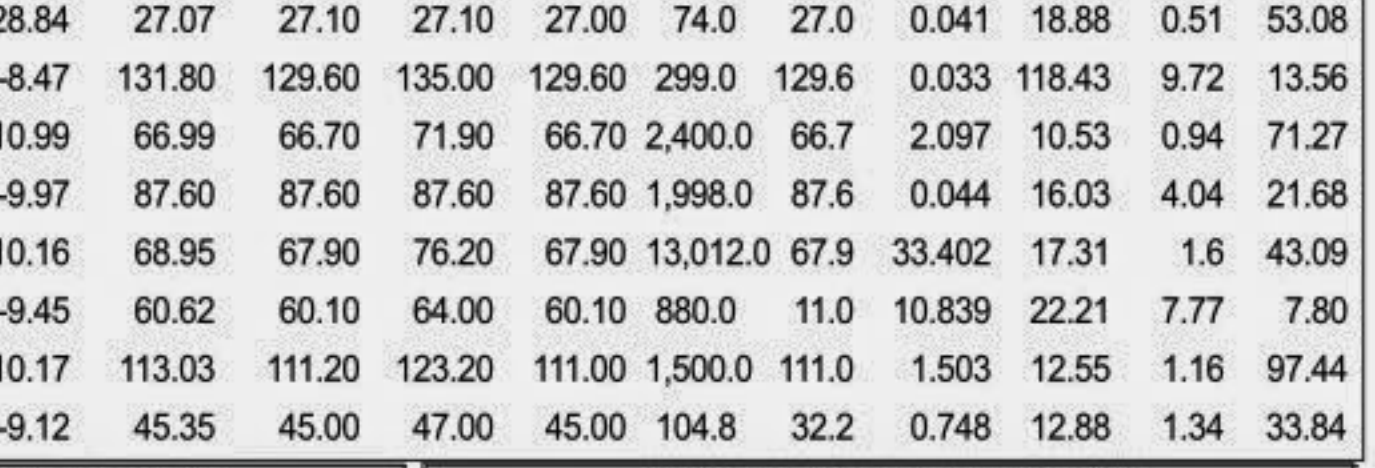
Notes: Capital Gainer / Loser tables are prepared on the basis of the close price change of the traded issues. "Close" or "C.Price" or "D Clo." is the Closing Price of the day. "Chn %" indicates the price difference in percentage. "Avg" prices indicate weighted average prices of all transactions of the day. "DayHi"/"D Hi" and "DayLo"/"D Lo" indicate the highest and lowest transacted price of the day. "Yr.Hi" and "Yr. Lo" indicate the highest and lowest transacted price last one running year, everyday the range moves by one day. "P Day" Previous Day. EPS is based on available latest audited accounts of the companies. EPS & Book value per share are diluted at bookclosing date whenever it is applicable. Only the positive earning companies are considered in calculating the PER and EPS of the Sectors and Stock Exchanges.

Capital Losers

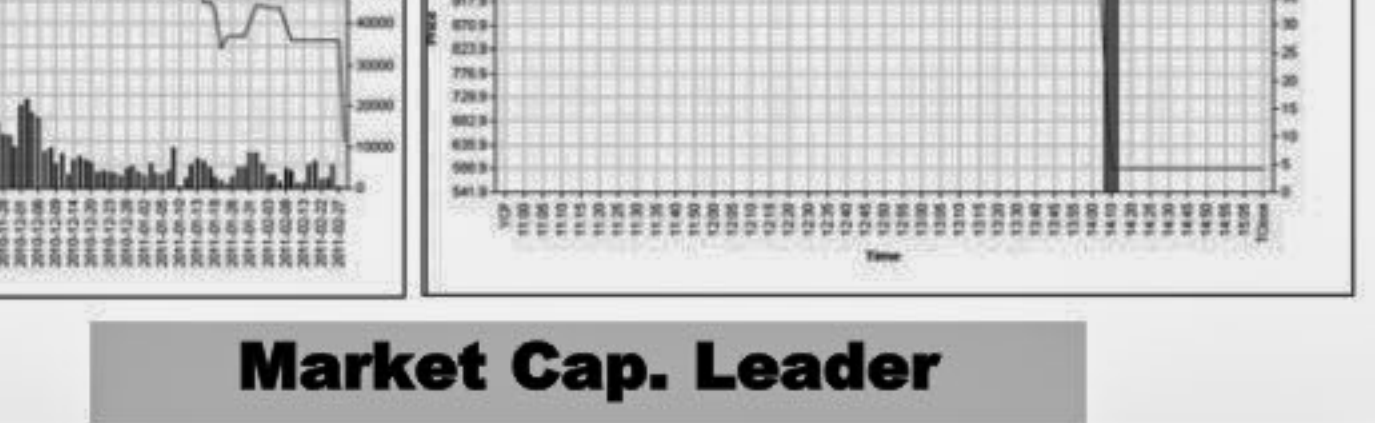
Dhaka Stock Exchange table listing Beach Hatchery -A, National Bank -A, Prime Insur -A, etc.



Chittagong Stock Exchange table listing Sonargaon Tex -A, Talu Spinning -A, etc.

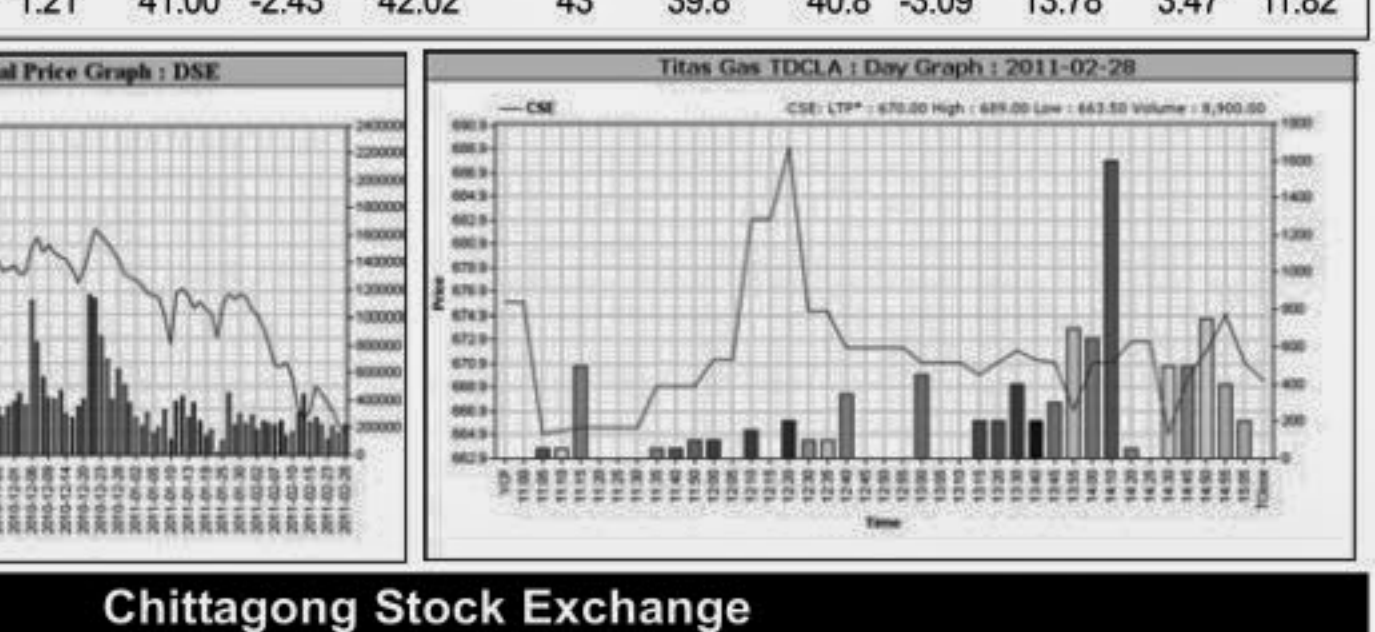


Chittagong Stock Exchange table listing Sonargaon Tex -A, Talu Spinning -A, etc.

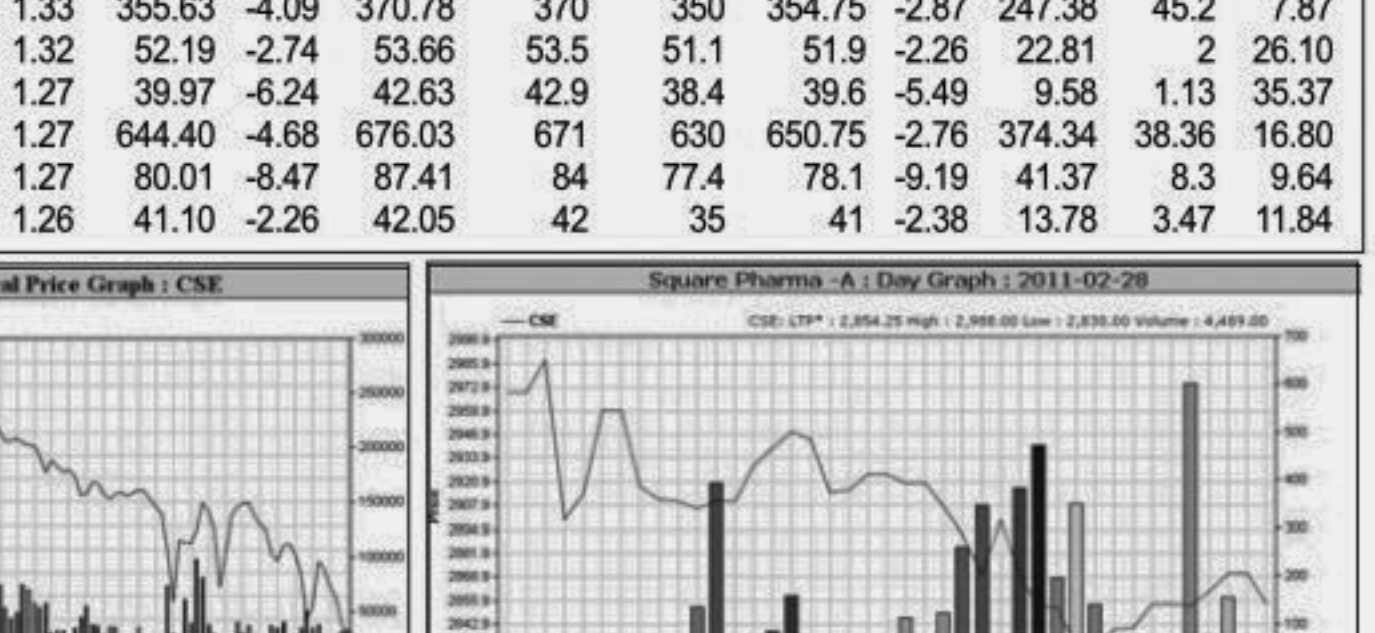


Market Cap. Leader

Dhaka Stock Exchange table listing top market cap companies like Grameenphone-A, National Bank -A, etc.



Chittagong Stock Exchange table listing top market cap companies like Grameenphone-A, National Bank -A, etc.



Chittagong Stock Exchange table listing top market cap companies like Grameenphone-A, National Bank -A, etc.



Chittagong Stock Exchange table listing top market cap companies like Grameenphone-A, National Bank -A, etc.

Prepared exclusively for Daily Star by Business Information Automation Service Line (BIASL) on the basis of information collected from daily stock quotations and audited reports of the listed companies. High level of caution has been taken to collect and present the above information and data. The publisher will not take any responsibility if any body uses this information and data for his/her investment decision. For any query please email to biasl@bol-online.com or call 01552153562 or go to www.biasl.net