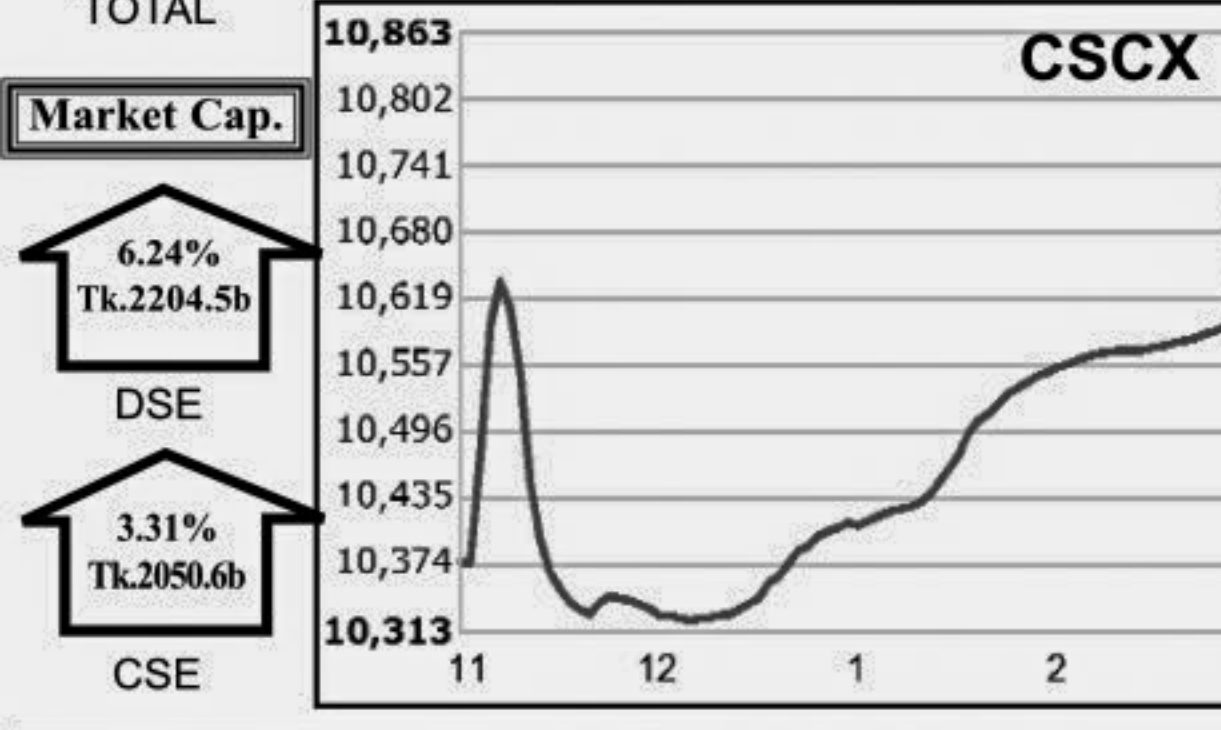
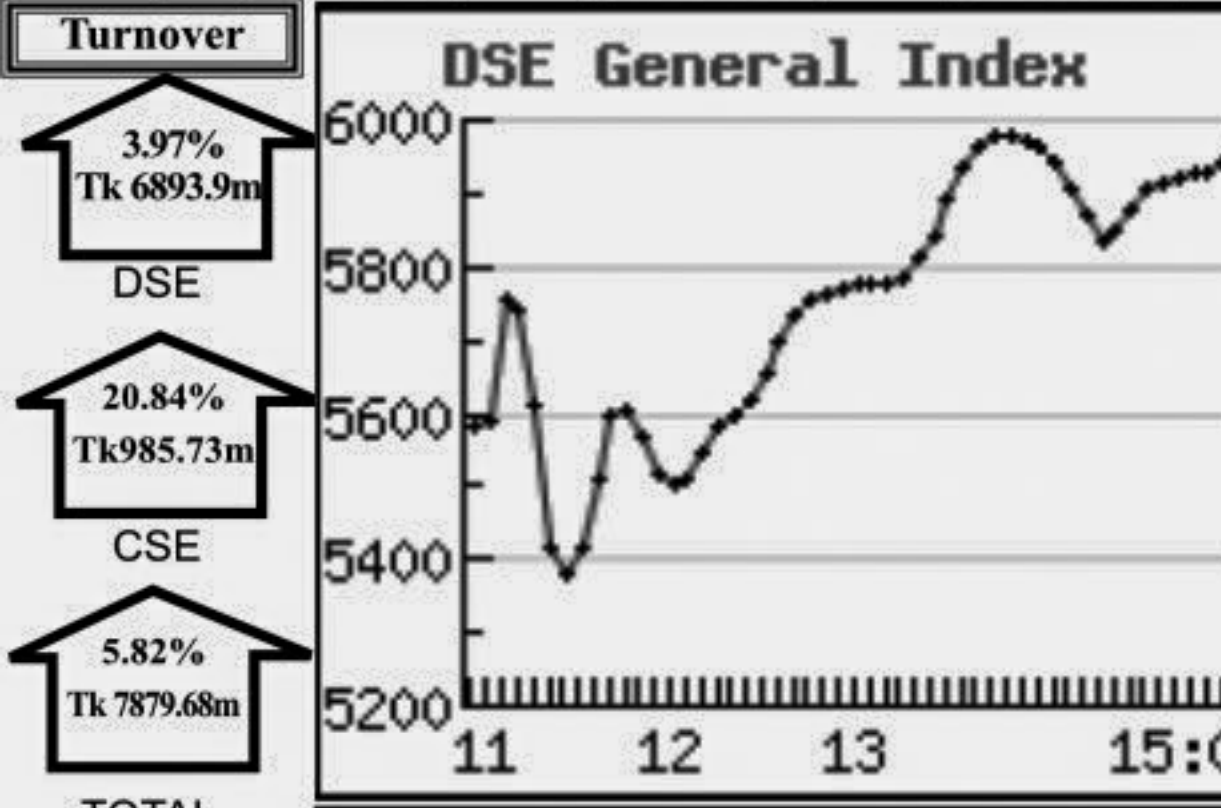


Capital Market Highlights: February 15, 2011

INDEX table showing All Share, DSE General, DSE 20, CSE All Share, CSE CSCX, CSE 30 with their respective price changes and percentages.

Turnover table showing DSE (3.97% Tk 6893.9m), CSE (20.84% Tk 985.73m), and TOTAL (5.82% Tk 7879.68m).



Market Cap. table showing DSE (6.24% Tk 2204.5b) and CSE (3.31% Tk 2050.6b).

Key Features - February 15

Indicators table with columns for DSE, CSE, and TOTAL, listing metrics like Turnover (Million Taka), No. of Contract, Traded Issues, etc.

Combined Turnover Leaders

Table listing top companies by turnover, including BEXIMCO Ltd., People's Leasing, National Bank, etc., with columns for Volume, Value, % of Total, and Average Price.

Sectoral Turnover Summary

Table showing turnover summary by sector, including Bank, Investment, Engineering, Food & Allied, Fuel & Power, etc.

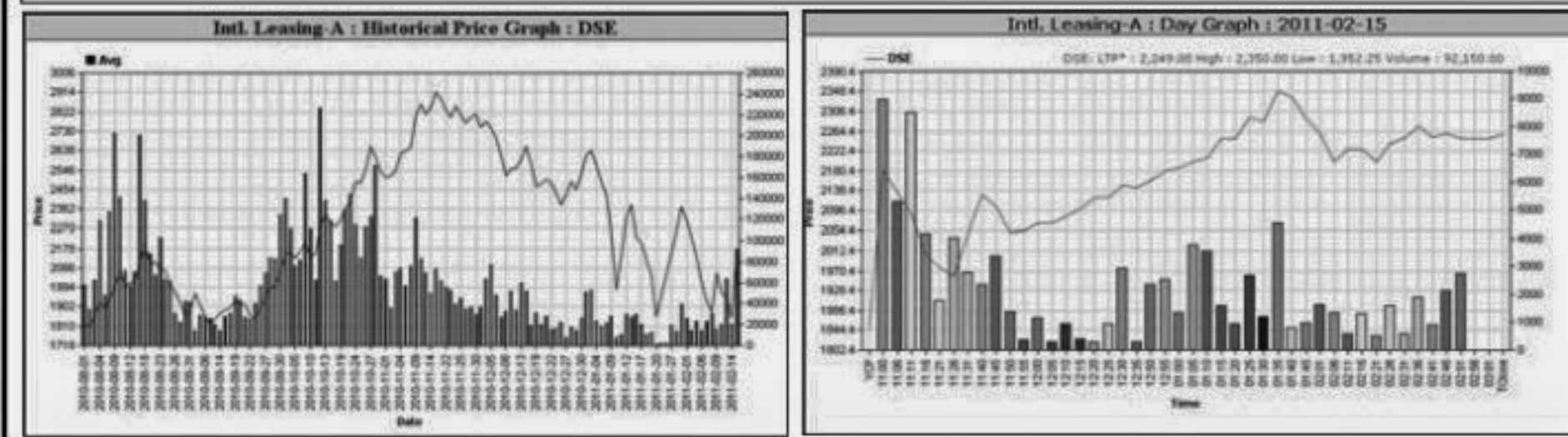
Sectoral P/E & EPS

Table showing P/E and EPS ratios for various sectors like Bank, NBFI, Investment, Engineering, etc.

Prepared exclusively for Daily Star by Business Information Automation Service Line (BIASL) on the basis of information collected from daily stock quotations and audited reports of the listed companies.

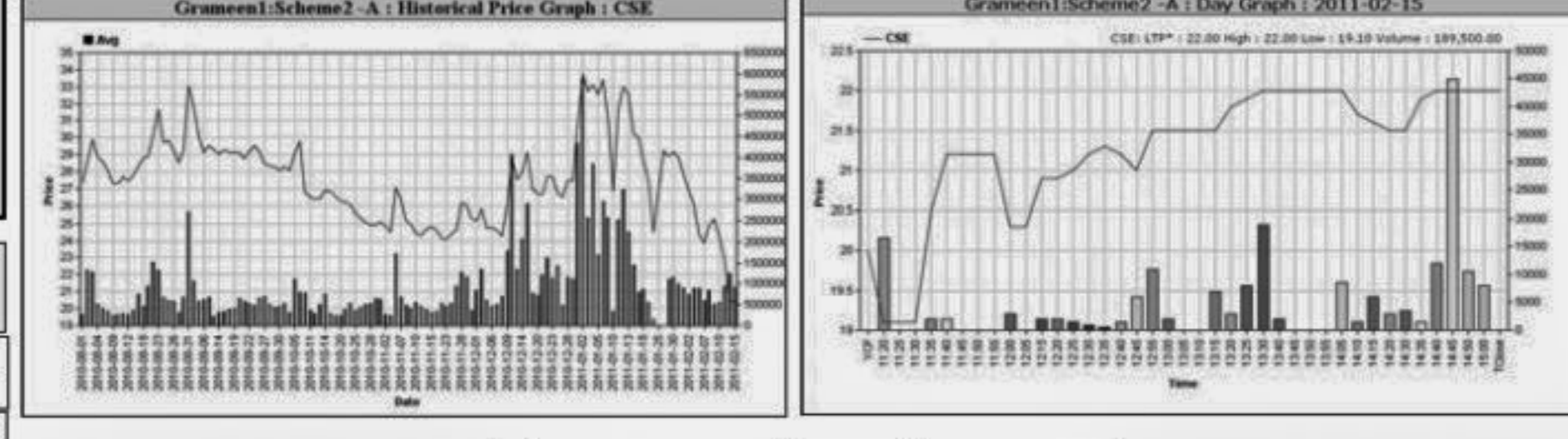
Capital Gainers

Table listing top capital gainers from the Dhaka Stock Exchange, including Intl. Leasing-A, National Bank -A, Alltex Industries -Z, etc.



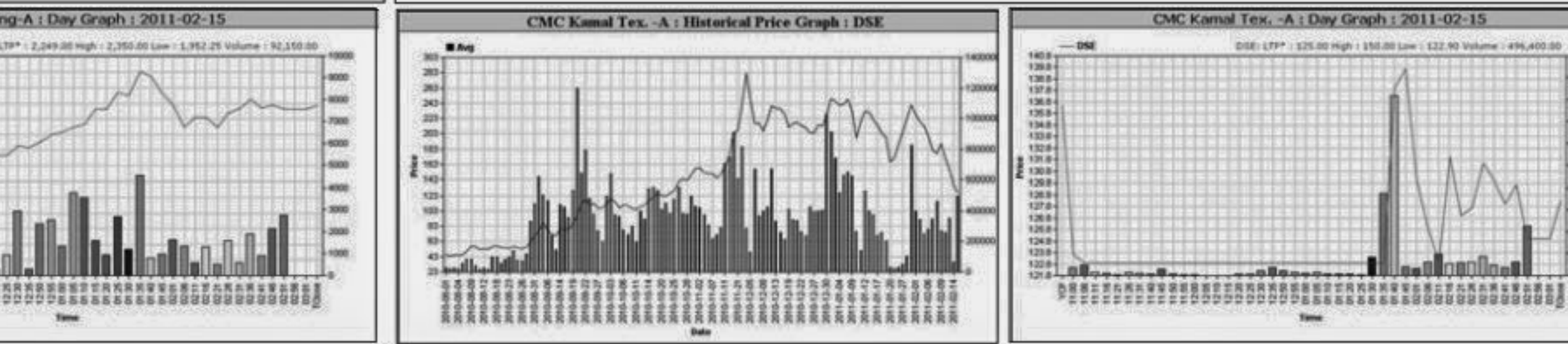
Chittagong Stock Exchange

Table listing top capital gainers from the Chittagong Stock Exchange, including Intl. Leasing-A, Gramene1:Scheme2 -A, National Bank -A, etc.



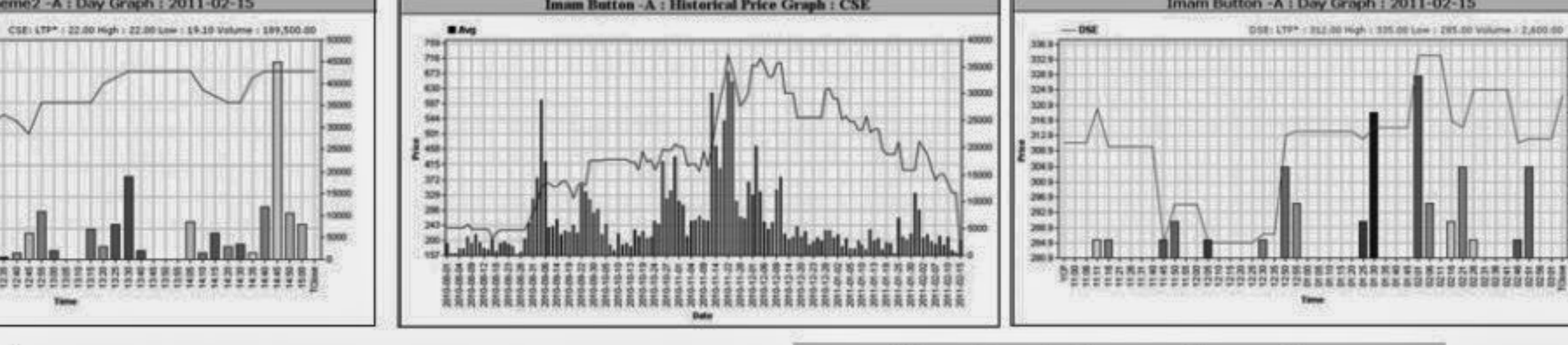
Capital Losers

Table listing top capital losers from the Dhaka Stock Exchange, including CMC Kamal Tex. -A, Apex SpinningA, Mithun Knitting -A, etc.



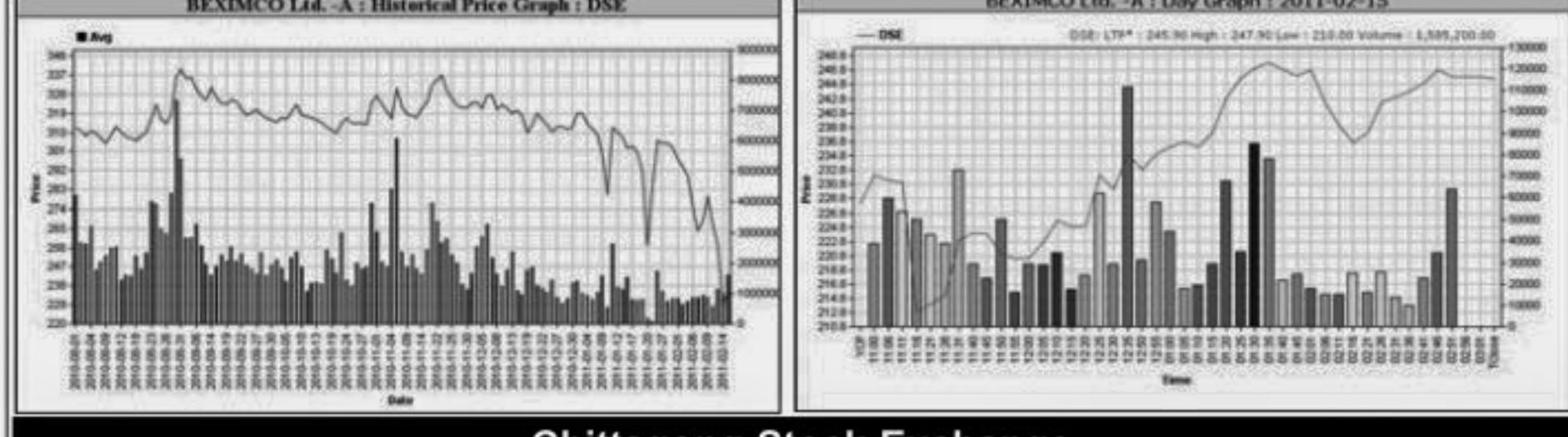
Chittagong Stock Exchange

Table listing top capital losers from the Chittagong Stock Exchange, including Imam Button -A, Talu Spinning -A, Salko Spinning-Z, etc.



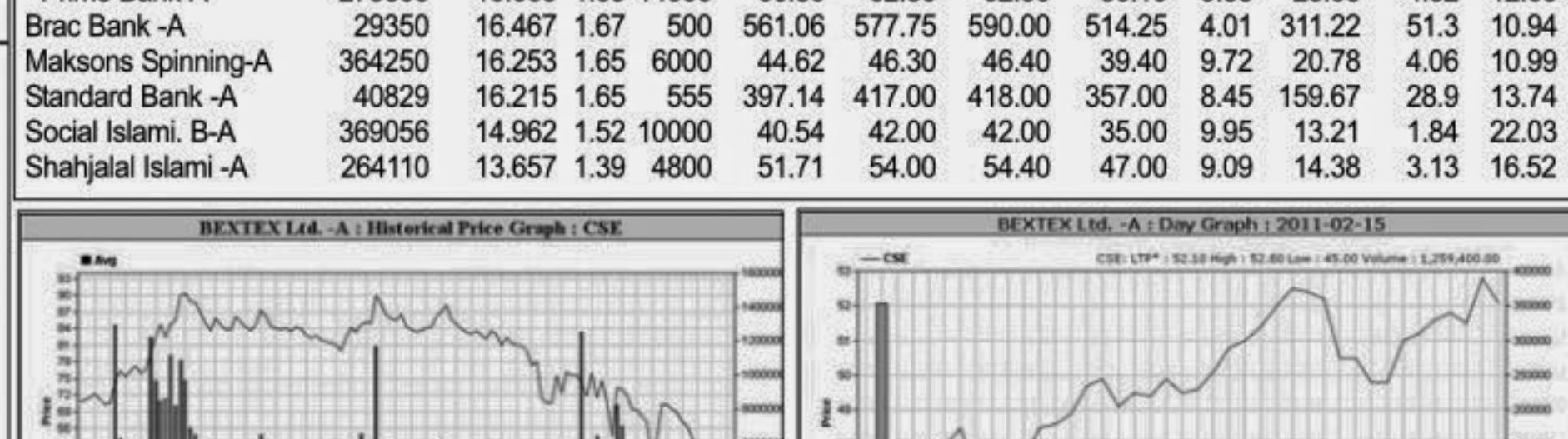
Turnover Leaders

Table listing top turnover leaders from the Dhaka Stock Exchange, including BEXIMCO Ltd., People's Leasing-A, National Bank -A, etc.



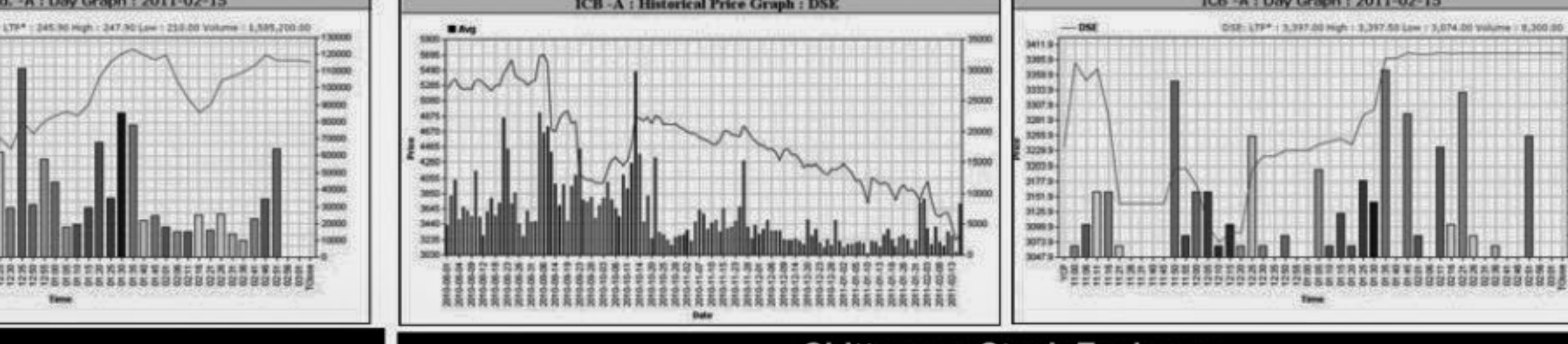
Chittagong Stock Exchange

Table listing top turnover leaders from the Chittagong Stock Exchange, including BEXIMCO Ltd., BEXIMCO Ltd., AB Bank -A, etc.



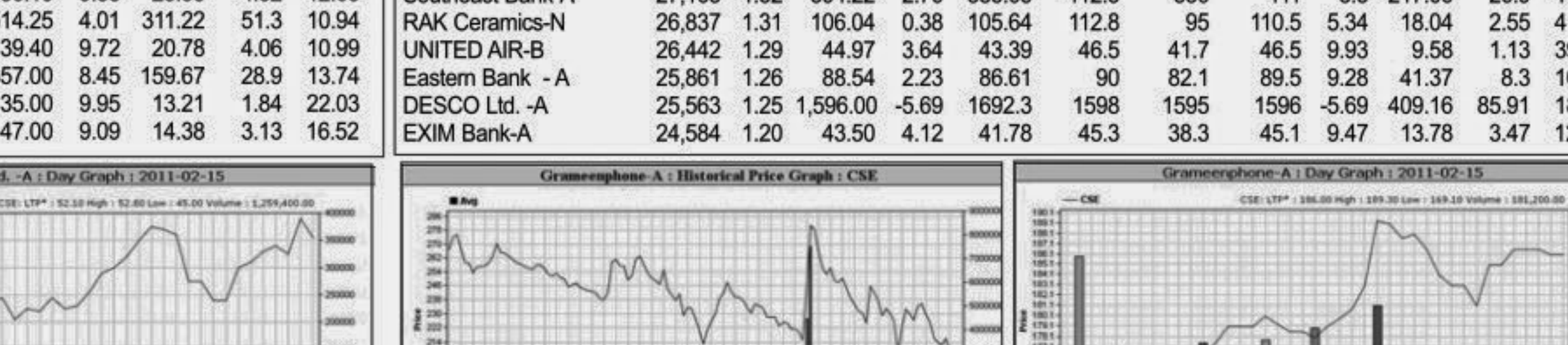
Market Cap. Leader

Table listing market capitalization leaders from the Dhaka Stock Exchange, including Grameephone-A, ICB -A, National Bank -A, etc.



Chittagong Stock Exchange

Table listing market capitalization leaders from the Chittagong Stock Exchange, including Grameephone-A, ICB -A, National Bank -A, etc.



When to buy or sell

Investors follow many calculations of corporate performance when deciding if a stock is undervalued or overvalued. These range from the simple price-earnings ratio, or P/E, to far more technical ways of attempting to discern whether a stock is trending up or down.



Notes: Capital Gainer / Loser tables are prepared on the basis of the close price change of the traded issues. "Close" or "C.Price" or "D Clo." is the Closing Price of the day. "Chn %" indicates the price difference in percentage.