

### Capital Market Highlights: February 13, 2011

**INDEX**

<b>DSE</b>	All Share 5020.48409 (-) 7.18%	DSE General 6052.41152 (-) 7.27%	DSE 20 4064.44276 (-) 6.33%
<b>CSE</b>	All Share 17413.6860 (-) 6.90%	CSE CSCX 11264.7722 (-) 6.99%	CSE 30 15541.4749 (-) 6.56%

**Turnover**

DSE: 27.09% Tk 7156.8m  
CSE: 33.69% Tk 986.94m  
TOTAL: 27.85% Tk 8143.79m

**Market Cap.**

DSE: 7.21% Tk 2253.9b  
CSE: 3.89% Tk 2200.3b

**DSE General Index**

**CSCX**

#### Key Features - February 13

Indicators	DSE	CSE	TOTAL
Turnover (Million Taka)	7,156.83	986.94	8,143.77
Turnover (Volume)	63,834,810	9,960,550	73,795,360
No. of Contract	151,499	29,822	181,321
Traded Issues	255	191	255
Issue Gain (Avg. Price Basis)	4	4	-
Issue Loss (Avg. Price Basis)	251	187	251
Unchanged Issue (Avg. Price Basis)	-	-	-
Market Cap. Equity (Billion Tk.)	2,253.93	2,200.27	2,253.93
Market Cap. Equity (Billion US\$)	32.90	32.12	32.90

#### Combined Turnover Leaders

Company	Volume (Share)	Value (M. Taka)	% of Total	Average Price
National Bank - A	2483520	409.62	5.03	164.93
UCBL - A	2354660	397.94	4.89	169
BEXIMCO Ltd. - A	1348521	346.72	4.26	257.11
Grameenphone-A	1325423	257.73	3.16	194.45
People's Leasing-A	1040800	255.48	3.14	245.47
Titas Gas TDCLA	340310	247.06	3.03	725.97
Southeast Bank-A	436166	186.24	2.29	427
UNITED AIR-B	3641690	177.10	2.17	48.63
BEXTEX Ltd. - A	3152067	174.87	2.15	55.48
AB Bank - A	136266	157.08	1.93	1152.74
Dutch Bangla B-A	112216	154.28	1.89	1374.87
Prime Bank - A	2138050	138.41	1.70	64.74
Aftab Auto.-A	537152	137.55	1.69	256.08
One Bank - A	157450	131.81	1.62	837.14
Maksons Spinning-A	2705175	130.45	1.60	48.22
Bay Leasing-A	59800	129.94	1.60	2172.86
Int'l. Leasing-A	64500	125.72	1.54	1949.21
Square Pharma -A	38974	123.59	1.52	3170.97
Union Capital -A	567550	115.44	1.42	203.41
Islamic Bank BD - A	182795	113.76	1.40	622.36
Standard Bank -A	261689	113.01	1.39	431.85
Pubali Bank - A	1435080	107.17	1.32	74.68
Shahjalal Islami -A	1875900	105.23	1.29	56.1
Brac Bank - A	171491	104.28	1.28	608.1
LankaBangla Fin. -A	246680	99.72	1.22	404.26
Uttara Bank - A	845875	94.93	1.17	112.22
Mercantile Bank -A	227701	91.12	1.12	400.17
ConfidenceCement A	420320	90.28	1.11	214.8
Golden Son -A	1155124	84.29	1.04	72.97
Premier Bank -A	1640475	80.31	0.99	48.95

#### Sectoral Turnover Summary

Sector	DSE	CSE	Total
	Mill. (Tk)	Mill. Tk.	Mill. Tk.
Bank	2649.20	415.82	3065.02
NBFI	1008.95	62.70	1071.65
Investment	237.57	3.32	240.89
Engineering	397.20	5.55	402.75
Food & Allied	94.49	1.32	95.81
Fuel & Power	563.81	7.88	571.69
Jute	1.90	0.03	1.93
Textile	536.21	7.49	543.70
Pharma & Chemical	268.34	3.75	272.09
Paper & Packaging	0.21	0.00	0.21
Service	40.70	0.57	41.27
Leather	33.75	0.47	34.22
Ceramic	126.72	1.77	128.49
Cement	124.16	1.73	125.89
Information Technology	22.60	0.32	22.92
General Insurance	214.44	3.00	217.44
Life Insurance	159.71	2.23	161.94
Telecom	215.60	3.01	218.61
Travel & Leisure	142.92	2.00	144.92
Miscellaneous	308.96	4.32	313.28
Debtenture	9.40	0.13	9.53

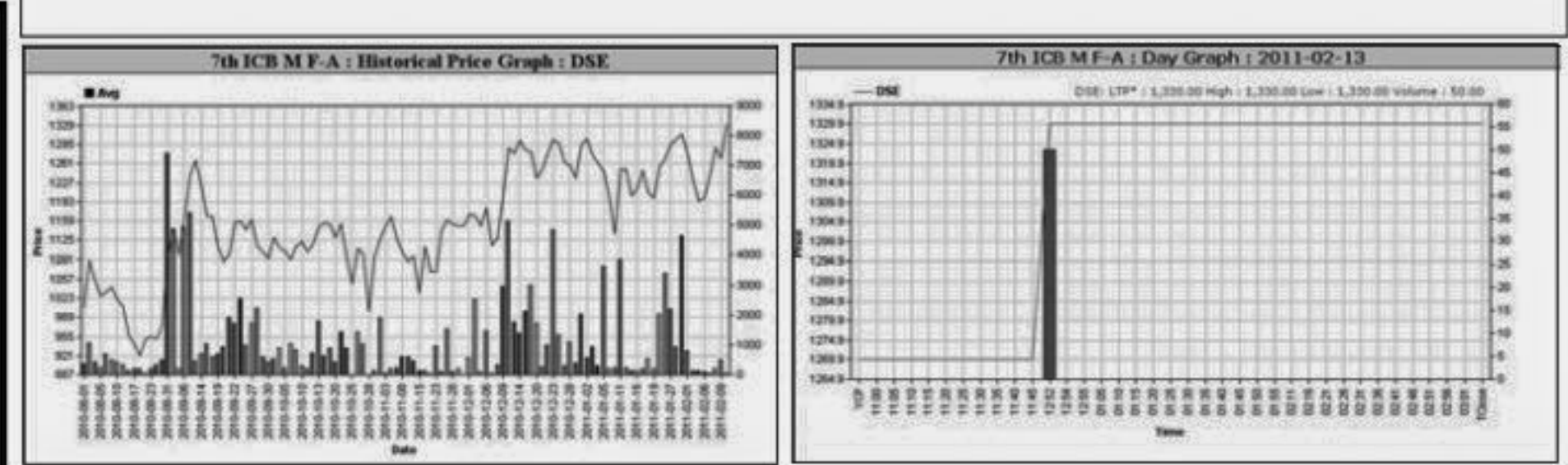
#### Sectoral P/E & EPS

Sector	P/E		EPS(%)	
	DSE	CSE	DSE	CSE
Bank	16.34	16.39	42.91	42.91
NBFI	41.55	41.28	44.55	45.23
Investment	36.70	41.16	35.57	35.57
Engineering	29.95	31.16	46.04	43.15
Food & Allied	21.91	21.64	103.43	112.91
Fuel & Power	16.56	16.70	52.87	52.87
Textile	31.22	30.68	17.96	17.98
Pharma. & Chemical	29.78	30.55	68.88	58.54
Paper & Printing	45.41	44.73	8.48	9.01
Service	29.57	29.96	35.68	35.68
Leather	15.89	16.47	86.73	104.80
Ceramic	50.00	48.98	19.99	19.99
Cement	24.66	24.77	30.22	30.22
IT	25.94	26.06	12.44	12.44
General Insurance	46.82	47.78	18.58	19.00
Life Insurance	43.62	46.60	96.13	96.13
Telecom	24.54	24.44	79.30	79.30
Travel & Leisure	223.77	645.90	2.06	0.75
Miscellaneous	14.32	14.23	155.10	146.10
Stock Exchanges	22.49	22.58	44.33	44.08

Prepared exclusively for Daily Star by Business Information Automation Service Line (BIASLI), on the basis of information collected from daily stock quotations and audited reports of the listed companies. High level of caution has been taken to collect and present the above information and data. The publisher will not take any responsibility if any body uses this information and data for his/her investment decision. For any query please email to biasli@bol-online.com or call 01552153562 or go to www.biasli.net

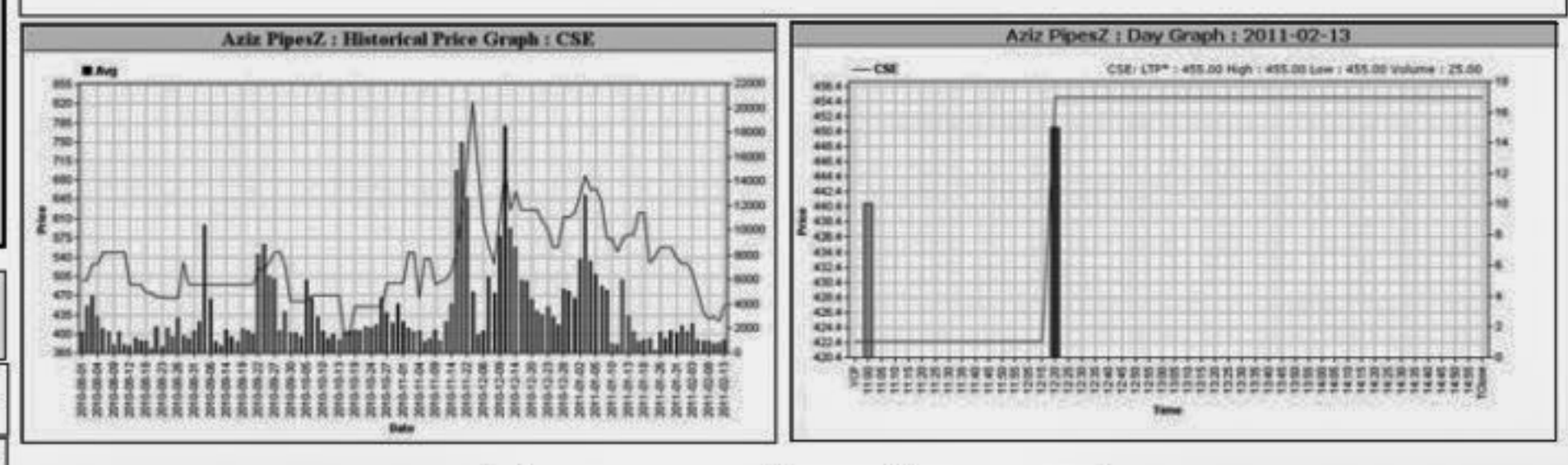
### Capital Gainers

Company	Price Chn. (%)		Price Scale				Turnover		BookV			
	Close	Avg.	Avg.	Close	DayHi	DayLo	Yr Hi	YrLo	M.Tk	Per S	EPS	PE
7th ICB M F-A	4.72	4.72	1,330.00	1,330.00	1,330.00	1,330.00	1,350.00	804.0	0.067	271.7	50	26.60
4th ICB M F-A	4.42	4.42	2,380.00	2,380.00	2,380.00	2,380.00	2,650.00	11551.0	0.024	586.36	114.28	20.83



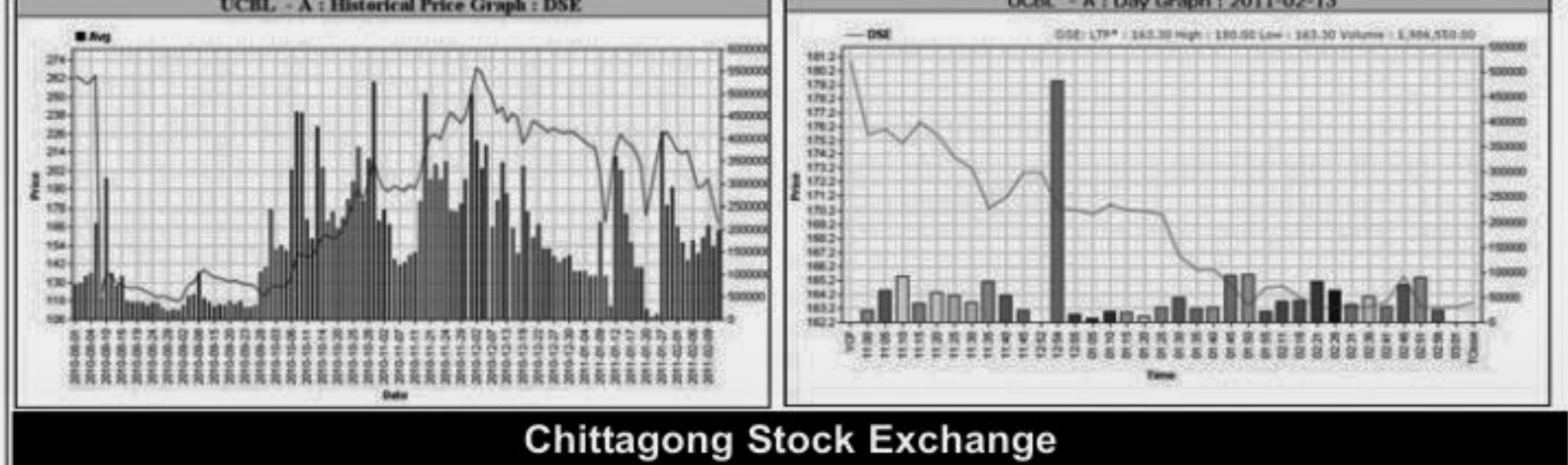
### Chittagong Stock Exchange

Company	Price Chn. (%)	Price Scale	Turnover	BookV
Aziz PipesZ	7.69	455.00	829.5	73.39
Central Insur-A	6.71	795.00	35.32	22.51
Berger Paints-A	3.65	730.00	29.20	25



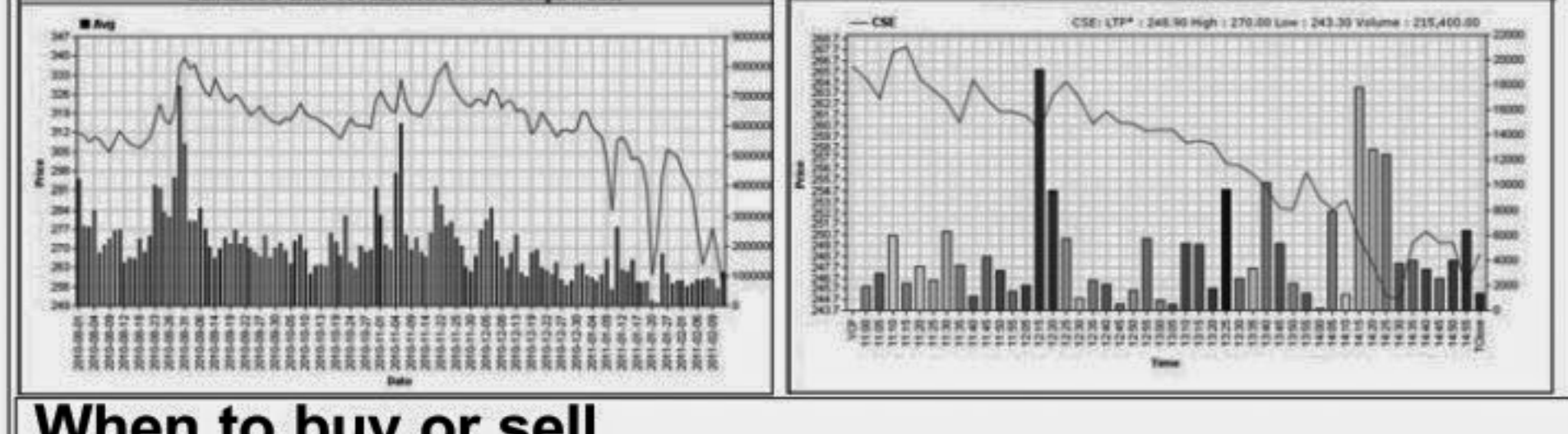
### Turnover Leaders

Company	Vol. Share	Value (M.Tk.)	% of Total	Price Scale				C. Pts	BookV		
				Avg. Close	DayHi	DayLo	Chn%				
National Bank - A	2192720	361.399	5.05	10000	164.82	160.50	174.00	-6.58	43.3	15.55	10.60
UCBL - A	1987140	335.741	4.69	5000	168.96	163.60	180.00	-9.51	19.61	3.21	52.64
BEXIMCO Ltd. - A	1133051	291.428	4.07	5000	257.21	249.80	268.00	-24.10	-6.13	63.73	20.38



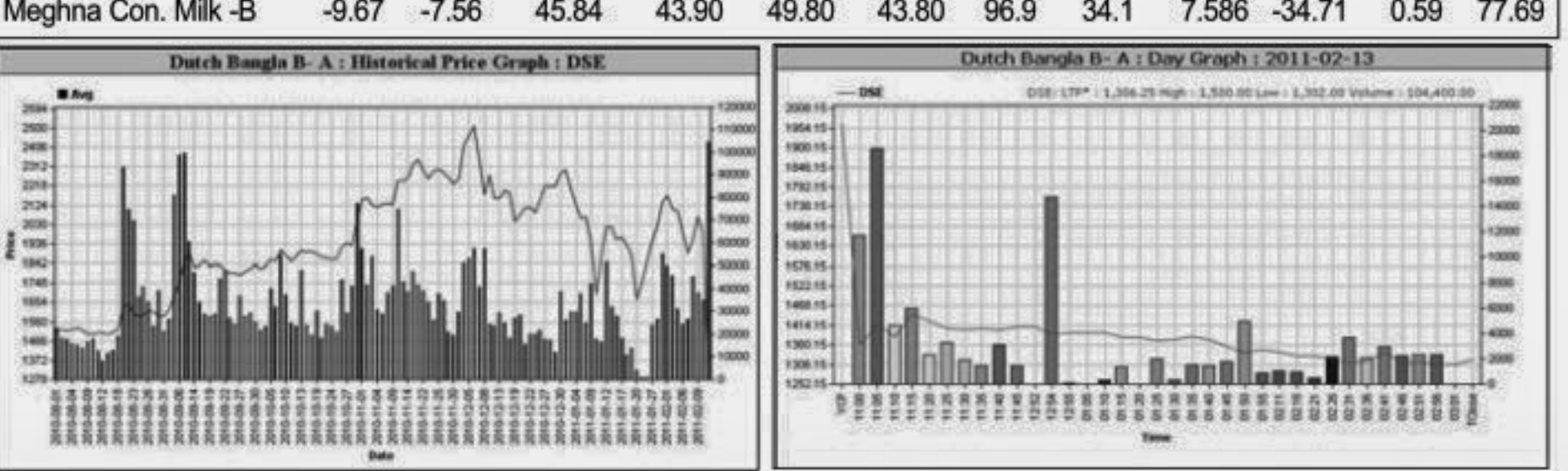
### Chittagong Stock Exchange

Company	Vol. Share	Value (M.Tk.)	% of Total	Average Price
UCBL - A	367520	62.198	6.30	169.24
BEXIMCO Ltd. - A	215470	55.288	5.60	256.59
National Bank - A	290800	48.217	4.89	200.00



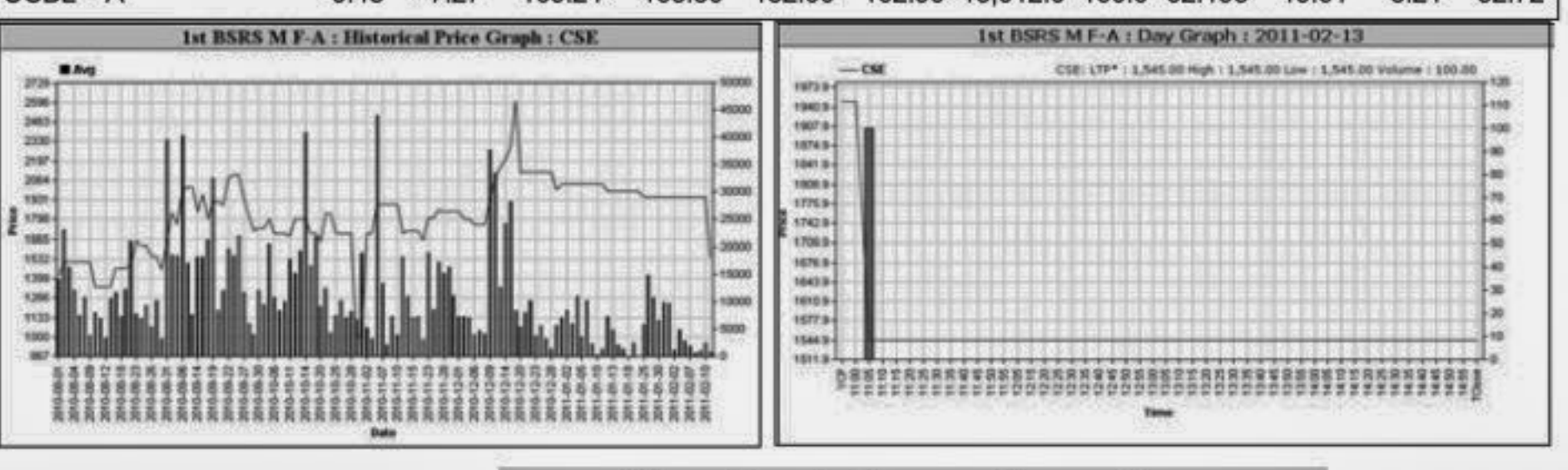
### Capital Losers

Company	Price Chn. (%)		Price Scale				Turnover		BookV			
	Close	Avg.	Avg.	Close	DayHi	DayLo	Yr Hi	YrLo	M.Tk	Per S	EPS	PE
Dutch Bangla B-A	-32.85	-31.03	1372.70	1318.50	1500.00	1302.00	2570.0	1150.0	143.332	350.05	100.12	13.71
RAK Ceramics-N	-18.14	-16.70	122.89	118.70	127.40	118.70	244.9	118.7	39.447	21.34	2.81	43.73
GlaxoSK (BD) -A	-14.38	-13.28	764.85	742.70	785.10	720.00	1580.0	720.0	2.524	114.65	34.05	22.46



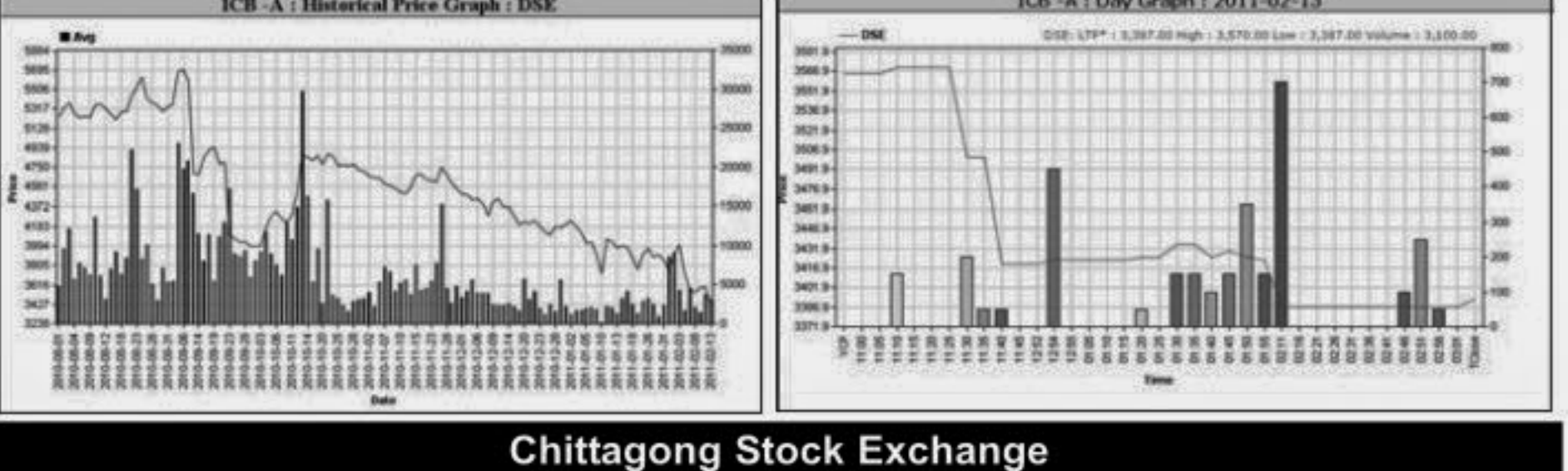
### Chittagong Stock Exchange

Company	Price Chn. (%)	Price Scale	Turnover	BookV
Dutch Bangla B-A	-31.94	1,403.88	185.0	14.02
1st BSRM M F-A	-20.77	1,545.00	875.8	81.88
RAK Ceramics-N	-18.13	119.02	116.50	42.36



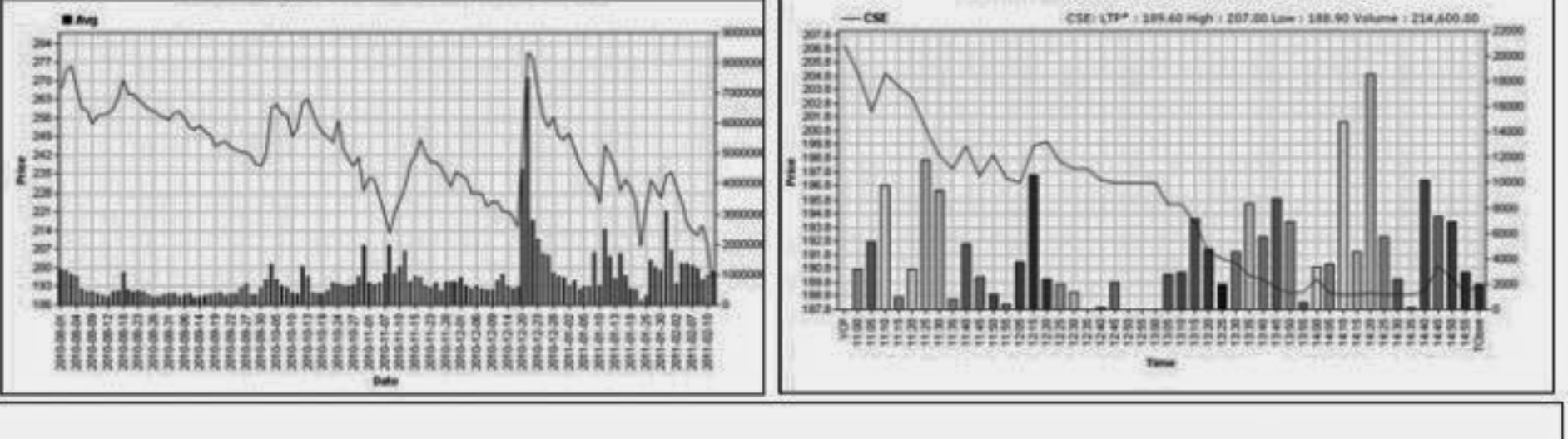
### Market Cap. Leader

Company	Market Cap. M. Tk.	% of Total	Average				Price Scale				BookV	
			Price	Chn.	P Day	D Hi	D Lo	D Clo.	Chn%	Per S		EPS
Grameenphone-A	262,741	11.66	194.58	-6.50	208.11	205	188.4	190.1	-7.85	35.57	7.93	24.54
ICB - A	85,693	3.8	3,427.71	-4.71	3597.25	3570	3387	3392.75	-4.84	230	68.18	50.27
National Bank - A	72,721	3.23	164.82	-4.19	172.02	174	158	160.5	-6.58	43.3	15.55	10.60



### Chittagong Stock Exchange

Company	Market Cap. M. Tk.	% of Total	Average Price
Grameenphone-A	261,675	11.89	208.71
ICB - A	97,967	4.45	3,918.67
National Bank - A	73,158	3.32	165.81



### When to buy or sell

Investors follow many calculations of corporate performance when deciding if a stock is undervalued or overvalued. These range from the simple price-earnings ratio, or P/E, to far more technical ways of attempting to discern whether a stock is trending up or down. Here are some of the most common.

**RSI (Relative Strength Index):** A technical momentum indicator that compares the size of recent gains to recent losses, in an attempt to determine overbought and oversold conditions of an asset. Stocks with more or strong gains have a higher RSI than stocks that had more or stronger losses. **SMA (Simple Moving Average):** A simple, or arithmetic, moving average is the average stock price over a certain period of time. It adds up the closing price of the security for a given period and then divides the total by the number of intervals. Short-term averages respond quickly to changes in the price of the stock, so appear less steady, while long-term averages are slow to react. **EMA (Exponential Moving Average):** A type of moving average that is similar to a simple moving average, except that more weight is given to the latest data. The exponential moving average is also known as "exponentially weighted moving average". **Bollinger Band:** A band that provides a relative definition of high and low, it was developed by famous technical trader John Bollinger. By definition, prices are high at the upper band and low at the lower band. The band usually plots two standard deviations away from a simple moving average. Because the standard deviation is a measure of volatility, the bands adjust themselves to market conditions. When the markets become volatile, the bands widen (move further away from the average); during less volatile periods, the bands contract. The closer the prices move to the upper band, the more overbought the market, and the closer the prices move to the lower band, the more oversold the market. **MACD (Moving Average Convergence Divergence):** A trend-following momentum indicator that shows the relationship between two moving averages of prices. It is used to spot changes in the strength, direction, momentum, and duration of a trend in a stock's price. **Divergence:** This happens when a security's price diverges from the MACD. It signals the end of the current trend.



Notes: Capital Gainer / Loser tables are prepared on the basis of the close price change of the traded issues. "Close" or "C.Price" or "D Clo." is the Closing Price of the day. "Chn %" indicates the price difference in percentage. "Avg" prices indicate weighted average prices of all transactions of the day. "DayHi"/"D Hi" and "DayLo" / "D Lo" indicate the highest and lowest transacted price of the day. "Yr.Hi" and Yr. Lo" indicate the highest and lowest transacted price last one running year, everyday the range moves by one day. "P Day" - Previous Day. EPS is based on available latest audited accounts of the companies. EPS & Book value per share are diluted at bookclosing date whenever it is applicable. Only the positive earning companies are considered in calculating the PER and EPS of the Sectors and Stock Exchanges.