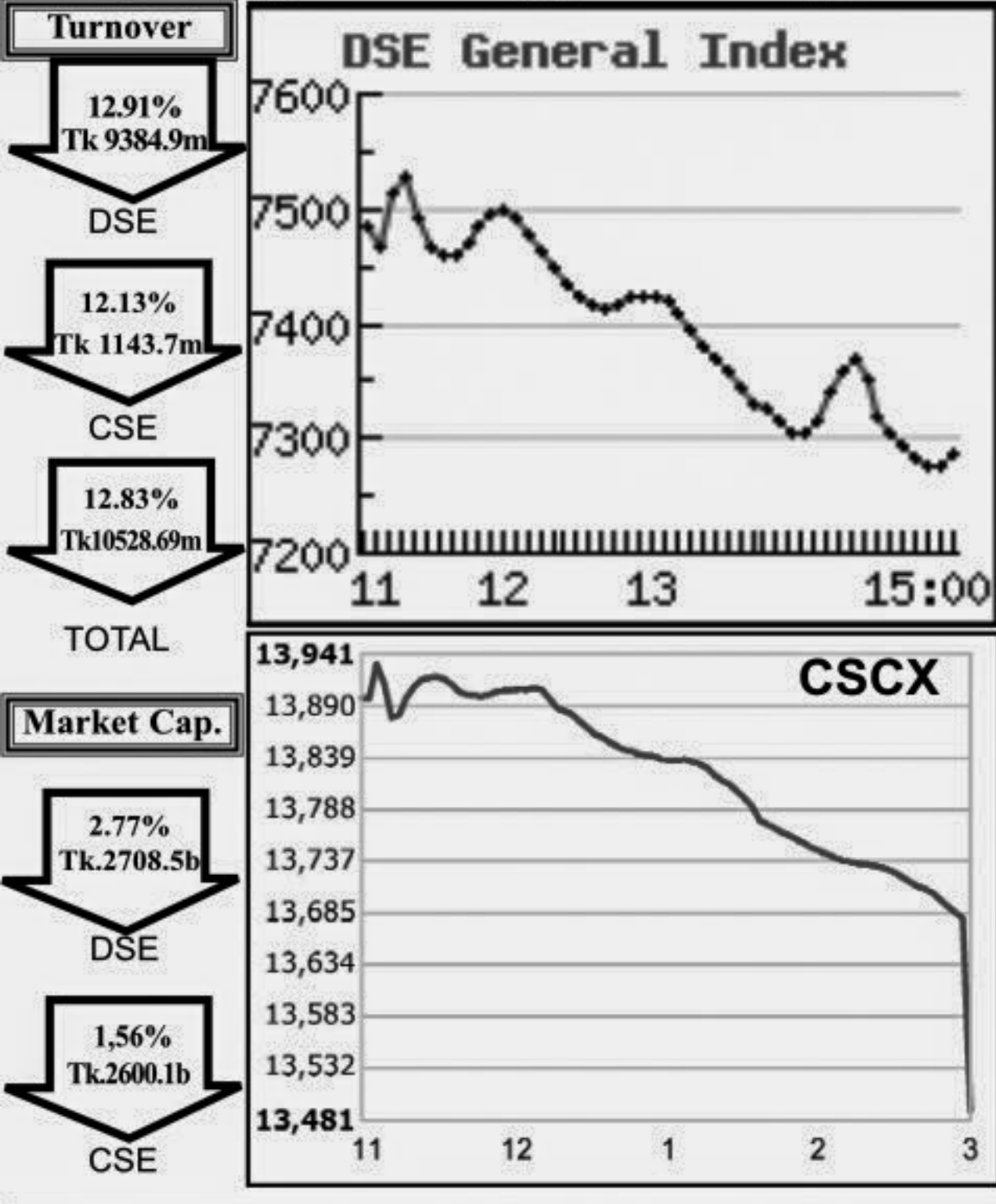


Capital Market Highlights:
February 01, 2011

INDEX			
	All Share	DSE General	DSE 20
DSE	6032.42587 (-) 2.68%	7280.98137 (-) 2.72%	4609.23294 (-) 1.97%
CSE			
	All Share	CSE CSCX	CSE 30
CSE	20841.5687 (-) 2.72%	13490.6141 (-) 2.76%	17952.2171 (-) 2.42%



Key Features - February 01

Indicators	DSE	CSE	TOTAL
Turnover (Million Taka)	9,384.96	1,143.73	10,528.69
Turnover (Volume)	76,524,275	9,662,432	86,186,707
No. of Contract	154,977	27,098	182,075
Traded Issues	255	202	255
Issue Gain (Avg. Price Basis)	32	26	32
Issue Loss (Avg. Price Basis)	223	176	223
Unchanged Issue (Avg. Price Basis)	-	-	-
Market Cap. Equity (Billion Tk.)	2,708.46	2,600.11	2,708.46
Market Cap. Equity (Billion US\$)	39.54	37.96	39.54

Combined Turnover Leaders

Company	Volume (Share)	Value (M. Taka)	% of Total	Average Price
UCBL - A	2551520	548.83	5.21	215.1
Grameenphone-A	2230651	524.32	4.98	235.05
BSRM Steels-A	186684	369.79	3.51	1980.85
BEXIMCO Ltd.-A	943787	280.85	2.67	297.58
National Bank - A	1670310	280.23	2.66	167.77
Titas Gas TDCLA	296831	276.56	2.63	931.7
UNITED AIR-B	4181960	257.48	2.45	61.57
People's Leasing-A	773707	216.19	2.05	279.42
Maksons Spinning-A	3411770	200.27	1.90	58.7
Union Capital - A	804450	185.00	1.76	229.97
Prime Bank-A	2527920	177.65	1.69	70.28
DESCO Ltd.-A	80031	168.53	1.60	2105.86
AB Bank - A	124389	166.88	1.59	1341.6
Aftab Auto-A	485161	166.60	1.58	343.38
Southeast Bank-A	323093	163.70	1.55	506.67
Power Grid Co. -A	182950	163.58	1.55	894.11
Bay Leasing-A	59030	158.28	1.50	2681.43
BEXTEX Ltd.-A	2344731	157.64	1.50	67.23
Bangladesh Welding -A	647800	155.83	1.48	240.56
Deshbandhu Polymer Ltd.-N	1886500	146.00	1.39	77.39
LankaBangla Fin. -A	311658	143.23	1.36	459.56
One Bank - A	129409	122.94	1.17	94.98
Confidencement A	444990	121.66	1.16	273.39
Social Islami. B-A	2379806	115.10	1.09	48.36
Dutch Bangla B-A	52411	113.84	1.08	2172.09
Summit Power - A	839210	107.76	1.02	128.4
Shahjalal Islami - A	1604130	104.02	0.99	64.85
Square Pharma -A	29350	101.02	0.96	3441.99
Golden Son -A	1113110	99.34	0.94	89.24
Shinepukur Ceramics-A	986208	94.94	0.90	96.27

Sectoral Turnover Summary

Sector	DSE		CSE		Total	
	Mill. (Tk.)	%	Mill. Tk.	%	Mill. Tk.	%
Bank	2519.01	26.84	345.90	30.24	2864.90	27.21
NBFI	1195.73	12.74	80.74	7.06	1276.47	12.12
Investment	464.10	4.95	29.19	2.55	493.29	4.69
Engineering	800.76	8.53	193.57	16.92	994.34	9.44
Food & Allied	222.82	2.37	13.98	1.22	236.79	2.25
Fuel & Power	976.19	10.40	49.57	4.33	1025.76	9.74
Jute	3.32	0.04	10.92	0.96	14.24	0.14
Textile	866.08	9.23	124.90	1.91	990.98	9.41
Pharma & Chemical	360.76	3.84	21.80	0.01	382.56	3.63
Paper & Packaging	0.85	0.01	0.16	0.01	1.01	0.01
Service	53.10	0.57	16.20	1.00	69.30	0.66
Leather	28.81	0.31	1.19	0.13	30.00	0.28
Ceramic	187.65	2.00	19.76	1.33	207.41	1.97
Cement	175.76	1.87	24.36	2.04	200.12	1.90
Information Technology	29.14	0.31	3.86	0.33	33.00	0.31
General Insurance	357.58	3.81	2.06	0.77	379.64	3.61
Life Insurance	240.07	2.56	8.80	0.98	248.87	2.36
Telecom	420.51	4.48	103.82	4.67	524.32	4.98
Travel & Leisure	204.05	2.17	53.43	2.61	257.48	2.45
Miscellaneous	270.31	2.88	29.90	0.05	300.21	2.85
Debtenture	8.37	0.09	0.56	0.00	8.93	0.08

Sectoral P/E & EPS

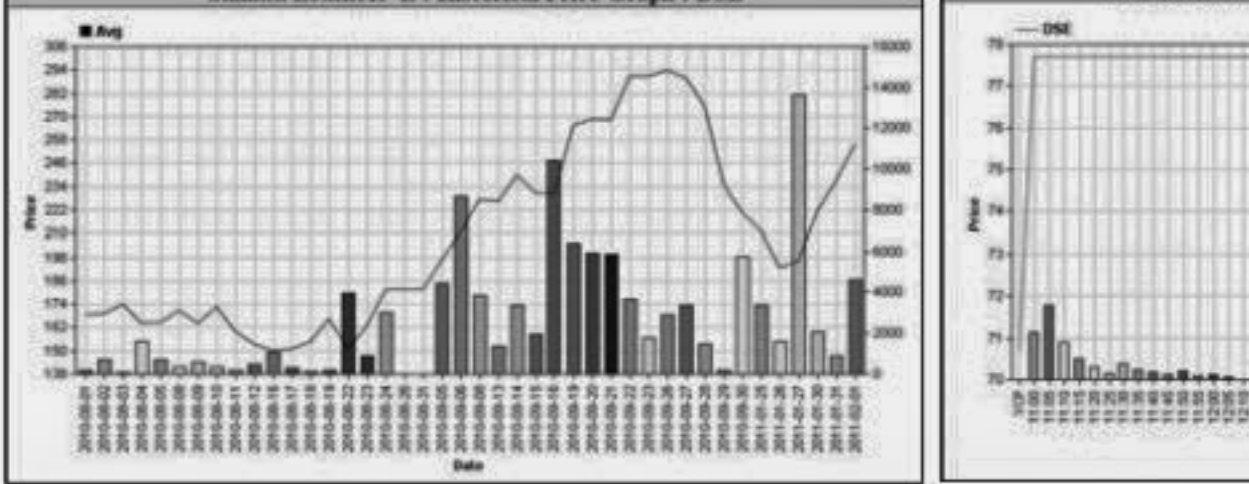
Sector	P/E		EPS(%)	
	DSE	CSE	DSE	CSE
Bank	21.84	21.86	37.37	37.37
NBFI	50.15	49.83	44.55	45.23
Investment	40.70	44.39	35.57	35.57
Engineering	37.50	39.23	46.04	43.15
Food & Allied	25.52	25.07	103.43	112.91
Fuel & Power	20.67	20.56	52.87	52.87
Textile	39.04	37.96	17.96	17.98
Pharma. & Chemical	34.67	34.18	67.89	58.54
Paper & Printing	58.27	58.65	8.48	9.01
Service	38.39	38.39	35.68	35.68
Leather	19.00	19.90	86.73	104.80
Ceramic	62.86	62.70	21.14	21.14
Cement	30.10	30.14	30.22	30.22
IT	31.49	31.58	12.44	12.44
General Insurance	60.97	59.92	18.58	19.00
Life Insurance	52.94	53.14	96.13	96.13
Telecom	19.45	19.50	120.80	120.80
Travel & Leisure	282.05	819.85	2.06	0.75
Miscellaneous	16.52	16.49	155.10	146.10
Stock Exchanges	26.94	26.81	44.32	44.11

Prepared exclusively for Daily Star by Business Information Automated Service Line (BIASL), on the basis of information collected from daily stock quotations and audited reports of the listed companies. High level of caution has been taken to collect and present the above information and data. The publisher will not take any responsibility if any body uses this information and data for his/her investment decision. For any query please email to biasl@bol-online.com or call 01552153562 or go to www.biasl.net

Capital Gainers

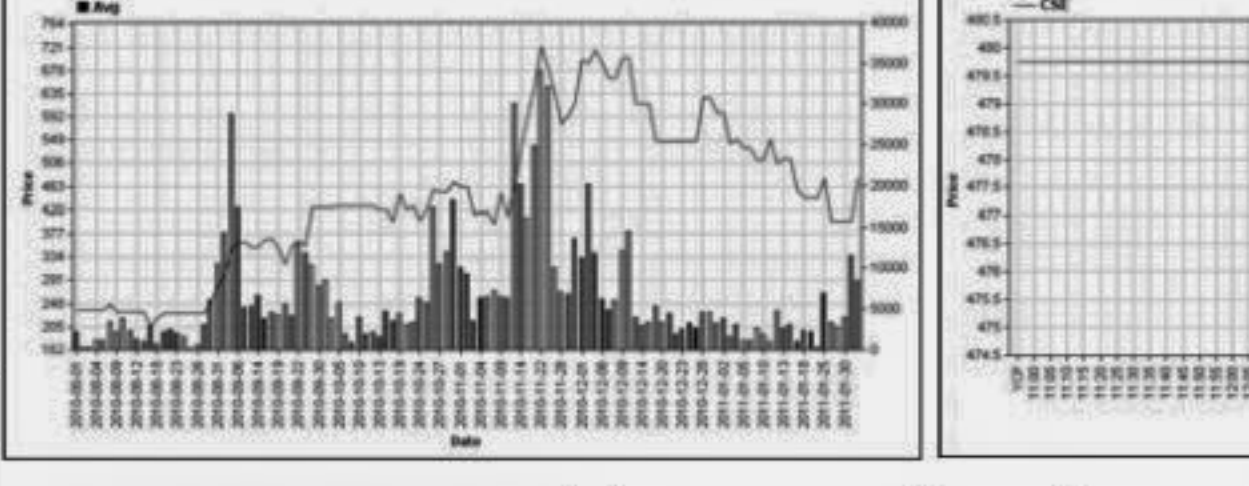
Dhaka Stock Exchange

Company	Price Chn. (%)		Price Scale				Turnover		BookV			
	Close	Avg.	Avg.	Close	DayHi	DayLo	Yr Hi	YrLo	M.Tk	Per S	EPS	PE
Deshbandhu Polymer Ltd.-N	9.76	9.43	77.37	77.60	77.70	74.10	90.0	46.0	113.236	13.63	3.47	22.30
Samata LeatherR -Z	8.54	7.89	255.85	257.25	257.50	244.00	300.0	100.0	1.190	118.74	-2.13	-120.12
Fine Foods A	8.07	4.99	87.56	88.40	89.90	85.00	142.0	44.3	23.486	11.41	2.49	35.16
Apex SpinningA	5.74	5.85	1,680.00	1,680.00	1,680.00	1,680.00	1,889.0	665.0	0.067	477.21	15.62	107.55
H.R. Textile -A	5.72	11.71	718.82	693.25	799.00	680.25	1169.8	237.0	17.500	135.2	15.55	46.23
Mithun Knitting -A	5.24	5.94	1,637.79	1,631.75	1,647.25	1,551.00	2,557.8	490.3	19.653	174.54	39.3	41.67
Alltex Industries -Z	5.13	9.49	202.46	199.75	207.25	192.00	217.0	101.3	19.622	118.51	-12.2	-16.60
Rahim Textile -A	4.99	4.99	2,461.50	2,461.50	2,461.50	3,300.0	0.0131.0	0.591	769.62	11.5	214.04	
Pharma Aids A	4.99	4.99	2,713.75	2,713.75	2,713.75	2,713.75	2,023.84	8.151	208.86	16.0	169.50	
Standard Ceramic -B	4.18	4.75	508.75	504.75	520.00	490.00	710.0	317.0	8.376	147.83	4.88	104.25



Chittagong Stock Exchange

Company	Vol.	Value	% of Total	Average Price
Imam Button -A	18.75	19.38	477.50	475.00
Progressive Life-A	14.62	14.74	2983.33	2980.00
Deshbandhu Polymer Ltd.-N	9.30	77.46	77.20	77.90
Samata Leather R -Z	8.06	8.55	269.21	268.00
6th ICB M F-A	7.47	7.48	830.50	830.50
Tallu Spinning -A	7.46	7.46	684.00	684.00
H.R. Textile -A	6.57	11.83	723.35	697.75
Sonargaon Tex -A	6.23	6.23	1164.00	1164.00
PragatiLife Insu. -A	4.98	4.98	3835.00	3835.00
Alltex Industries -Z	4.58	11.17	205.66	200.00



Turnover Leaders

Dhaka Stock Exchange

Company	Vol. Share	Value (M.Tk.)	% of Total	Price Scale			C.Pts	BckV				
				Avg. Close	DayHi	DayLo						
UCBL - A	2066820	444.648	4.74	6550	215.14	212.90	220.00	211.90	-2.20	19.61	3.21	67.02
Grameenphone-A	1789851	420.507	4.48	20000	234.94	229.50	242.00	227.60	-3.29	33.64	12.08	19.45
Titas Gas TDCLA	290226	270.412	2.88	8450	931.73	922.00	955.00	918.00	-7.52	200.15	60.88	15.30
BSRM Steels-A	130643	256.849	2.74	1500	1966.04	1920.50	1993.25	1906.25	1.43	7.5	34.43	57.10
BEXIMCO Ltd.-A	846967	252.026	2.69	5000	297.56	294.10	302.90	292.50	-2.45	63.73	20.38	14.60
National Bank - A	1418270	237.890	2.53	10000	167.73	167.20	169.50	166.00	0.30	20.25	4.72	35.54
UNITED AIR-B	3316640	204.050	2.17	43500	61.52	60.00	64.00	59.20	-5.21	9.58	1.13	54.44
People's Leasing-A	707307	197.638	2.11	5000	279.42	275.60	285.00	274.10	-2.27	12.32	3.56	78.49
Union Capital -A	774950	178.229	1.90	9000	229.92	228.60	233.90	227.00	-0.31	11.91	3.56	64.60
Prime Bank-A	2411950	169.465	1.81	50000	70.26	69.00	72.90	68.60	-0.43	25.53	4.82	14.58
DESCO Ltd.-A	78841	166.039	1.77	2100	2106.00	2046.50	2160.00	2031.00	-1.87	409.16	85.91	24.51
Maksons Spinning-A	2780975	163.233	1.74	25000	58.70	57.60	61.30	57.20	-0.95	20.78	4.06	14.46
Bay Leasing-A	57430	154.016	1.64	400	2681.81	2650.25	2745.00	2636.25	-2.01	306.33	25.69	104.80
Bangladesh Welding -A	638300	153.536	1.64	9500	240.54	234.20	251.90	231.20	1.12	26.15	1.01	238.16
Power Grid Co. -A	170200	152.245	1.62	1700	894.51	874.25	943.00	873.00	-6.52	374.34	38.36	23.32
AB Bank - A	110026	147.596	1.57	500	1341.46	1318.00	1380.00	1310.00	-3.85	298.68	104.91	12.79
Aftab Auto-A	411641	141.360	1.51	5000	343.41	334.20	354.90	331.20	-4.73	55.51	15.08	22.77
Southeast Bank-A	271668	137.583	1.47									