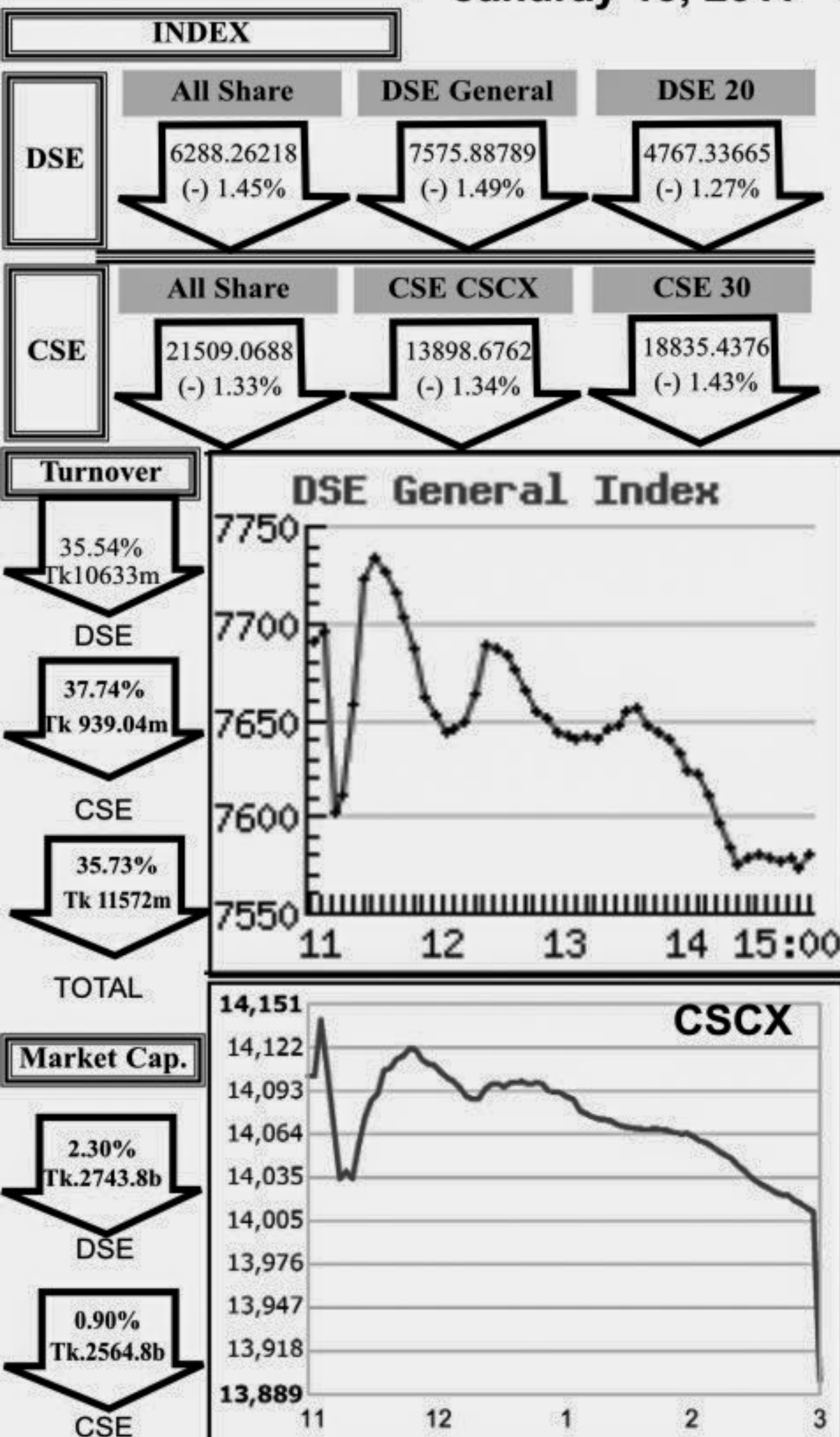


**Capital Market Highlights:  
January 13, 2011**

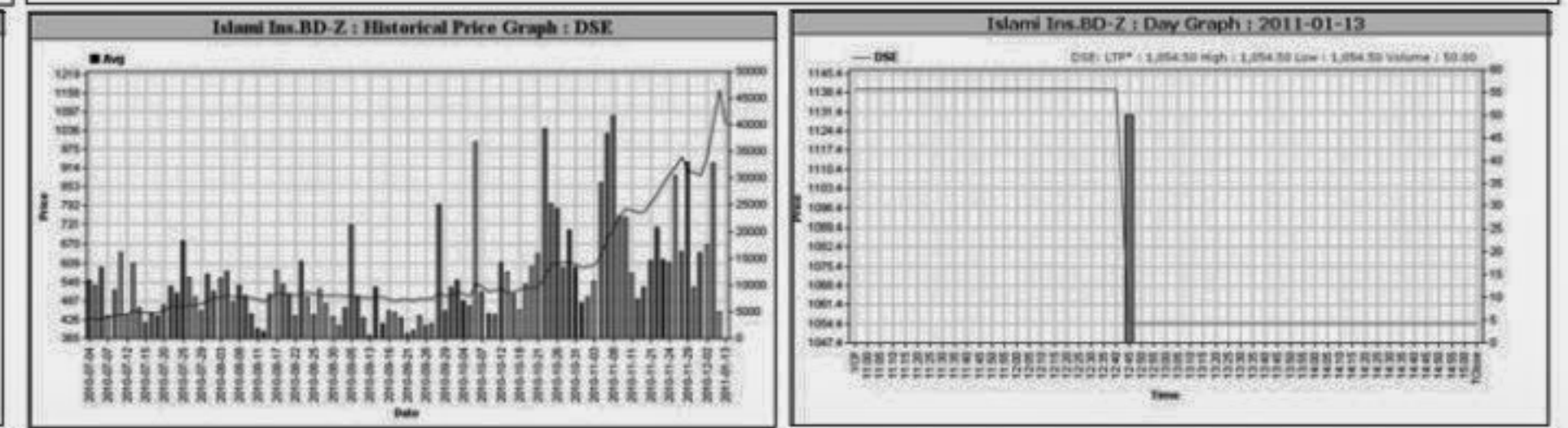
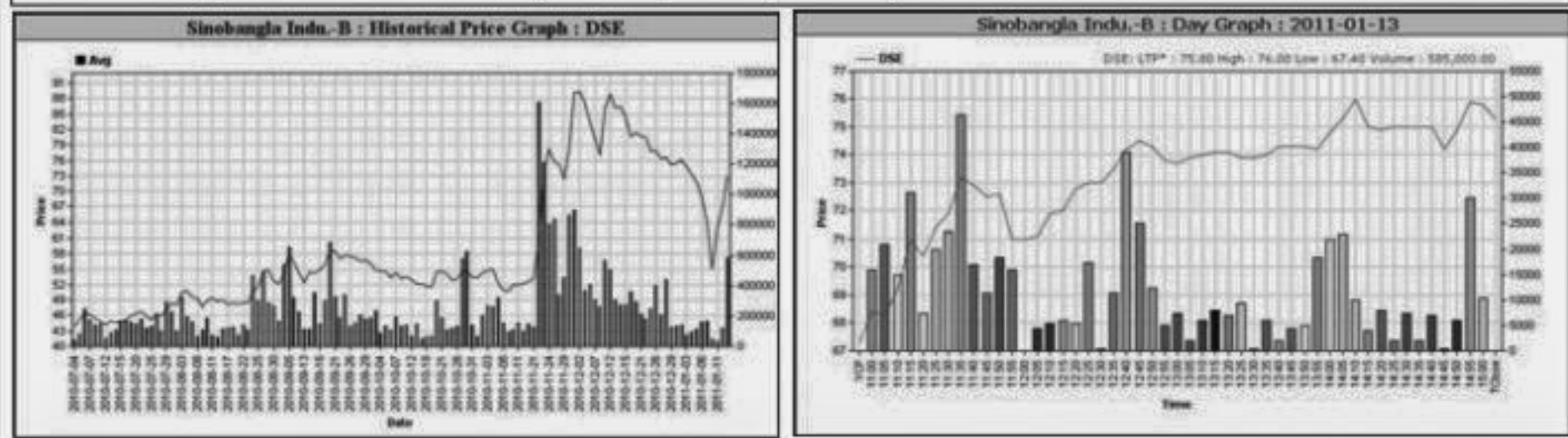


**Capital Gainers**

Company	Price Chn. (%)		Price Scale				Turnover	BookV	EPS	PE		
	Close	Avg.	Avg.	Close	DayHi	DayLo					Yr Hi	YrLo
Sinobangla Indu.-B	11.89	9.24	72.98	75.10	76.00	67.40	94.9	43.0	42.692	20.25	0.56	130.32
Safko Spinning-Z	8.01	10.84	769.03	751.75	793.00	724.00	918.0	80.5	19.841	57.14	-29.83	-25.78
Standard Ceramic -B	4.21	3.70	464.30	464.25	486.00	446.25	710.0	290.0	1.834	147.83	4.88	95.14
BOC (BD) Ltd. -A	2.22	0.62	618.33	626.20	642.00	610.00	874.0	487.2	26.650	120.81	40.08	15.43
UCBL -A	1.53	4.43	225.86	224.90	229.00	218.00	3140.0	160.0	748.760	19.61	3.21	70.36

**Capital Losers**

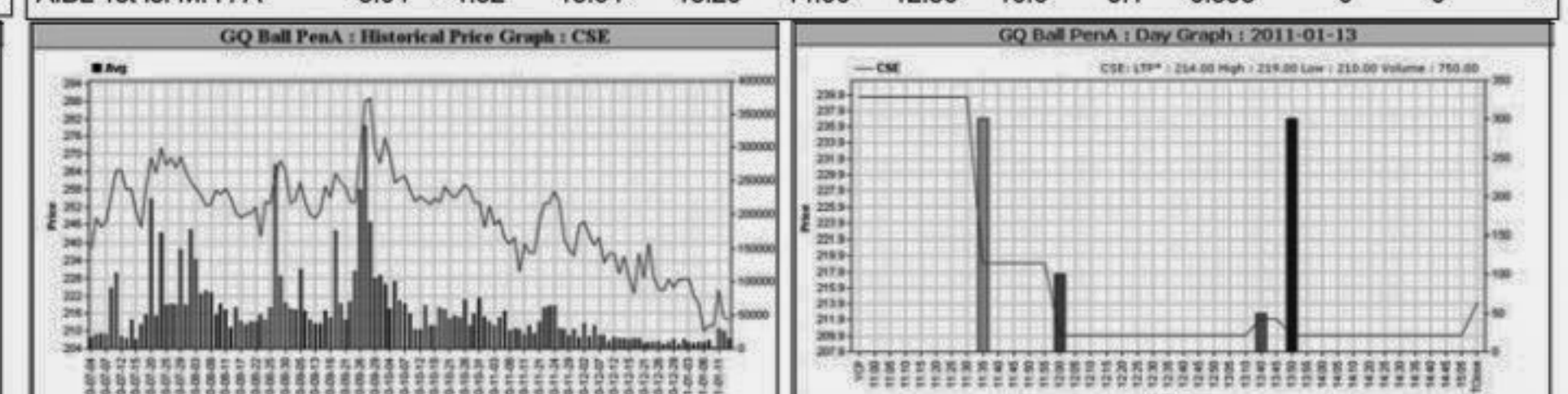
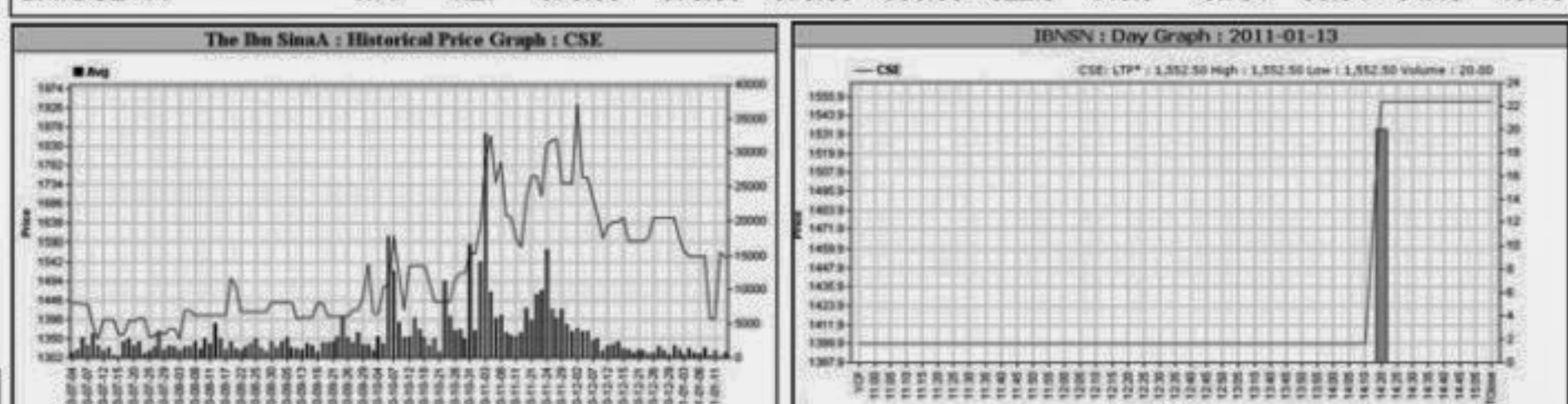
Company	Price Chn. (%)		Price Scale				Turnover	BookV	EPS	PE		
	Close	Avg.	Avg.	Close	DayHi	DayLo					Yr Hi	YrLo
Islami Ins.BD-Z	-7.48	-9.53	1054.50	1054.50	1054.50	1054.50	1180.0	401.3	0.053	126.82	7.2	146.46
Dulamia CottonZ	-5.95	-3.25	312.65	300.50	344.75	290.00	515.3	165.3	2.076	-173.12	-8.32	-37.58
Marico BD Ltd.-A	-5.57	-4.79	527.42	516.90	541.50	512.50	768.9	376.0	21.967	47.36	16.45	32.06
AIBL 1st Is. M. F.-A	-4.93	-0.93	13.78	13.50	14.80	12.50	20.1	9.3	3.452	0	0	0
Stylecraft -A	-4.92	-5.11	5800.00	5811.50	5855.00	5760.00	9724.8	3000.0	0.174	2211	133.6	43.41



**Chittagong Stock Exchange**

Company	Price Chn. (%)		Price Scale				Turnover	BookV	EPS	PE		
	Close	Avg.	Avg.	Close	DayHi	DayLo					Yr Hi	YrLo
Sinobangla Indu.-B	12.50	8.88	73.83	76.50	77.00	67.30	99.0	41.3	2.916	20.25	0.56	131.84
The Ibn SinaA	10.89	10.89	1552.50	1552.50	1552.50	1552.50	2049.0	1000.0	0.031	199.45	45.58	34.06
Dacca Dyeing-A	6.40	8.47	81.35	79.80	84.50	79.00	104.8	32.2	6.809	12.88	1.34	60.71

Company	Price Chn. (%)		Price Scale				Turnover	BookV	EPS	PE		
	Close	Avg.	Avg.	Close	DayHi	DayLo					Yr Hi	YrLo
Islami Ins.BD-Z	-36.85	-38.42	673.64	687.75	700.00	620.00	1,112.5	375.0	0.236	126.82	7.2	93.56
GQ Ball PenA	-10.68	-10.70	214.00	214.00	219.00	210.00	304.0	195.0	0.161	118.43	9.72	22.02
Monno Ceramic -A	-6.93	-6.93	1,023.75	1,023.75	1,050.00	1,015.00	1,645.0	401.0	0.123	173.8	2.37	431.96



**Turnover Leaders**

Company	Vol. Share	Value (M.Tk.)	% of Total	Price Scale		C.Pts	BookV	EPS	PE			
				Avg. Close	DayHi							
				DayLo	Chn%							
UCBL -A	3315190	748.760	7.04	10000	225.86	224.90	218.00	1.53	19.61	3.21	70.36	
BEXIMCO Ltd. -A	1127060	346.966	3.26	20000	307.85	306.80	311.00	305.50	-0.62	63.73	20.38	15.11

**Market Cap. Leader**

Company	Market Cap. M. Tk.	% of Total	Average		Price Scale		BookV	EPS	PE			
			Price	Chn. P Day	D Hi	D Lo						
			D Clo	D Chn%	Per S	EPS						
Grameenphone-A	319,657	11.65	236.73	-2.17	241.97	241	233.6	234.8	-1.76	33.64	12.08	19.60
ICB -A	99,300	3.62	3,971.98	-1.59	4,036.2	4,028	3,910	3,973.25	-1.4	230	68.18	58.26

**Combined Turnover Leaders**

Company	Volume (Share)	Value (M. Taka)	% of Total	Average Price
UCBL -A	3,908,840	882.56	7.63	225.79
BEXIMCO Ltd. -A	1,235,460	380.28	3.29	307.8
National Bank -A	202,630	362.60	3.13	178.95
People's Leasing-A	1,231,350	355.67	3.07	288.84
Bay Leasing -A	1,235,000	344.31	2.98	278.796
Southeast Bank-A	5,776,533	312.56	2.70	541.09

**Chittagong Stock Exchange**

Company	Vol. Share	Value (M.Tk.)	% of Total	Price Scale		C.Pts	BookV	EPS	PE			
				Avg. Close	DayHi							
UCBL -A	59,3650	133.798	14.25	4000	225.38	224.70	228.50	218.10	1.63	19.61	3.21	70.21
Grameenphone-A	180,200	42.768	4.55	3600	237.34	234.30	241.80	230.10	-1.93	33.64	12.08	19.65

**Chittagong Stock Exchange**

Company	Market Cap. M. Tk.	% of Total	Average		Price Scale		BookV	EPS	PE			
			Price	Chn. P Day	D Hi	D Lo						
Grameenphone-A	320,480	12.50	237.34	-2.48	243.37	241.8	230.1	234.3	-1.93	33.64	12.08	19.65
ICB -A	92,813	3.62	3,712.50	0.00	3,712.5	0	0	0	0	230	68.18	54.45

**Sectoral Turnover Summary**

Sector	DSE		CSE		Total	
	Mill. Tk.	%	Mill. Tk.	%		
Bank	3794.04	35.68	435.37	46.36	4229.41	35.55
NBFI	1694.35	15.93	66.98	7.13	1761.33	15.22
Investment	551.78	5.19	54.82	5.84	606.61	5.24

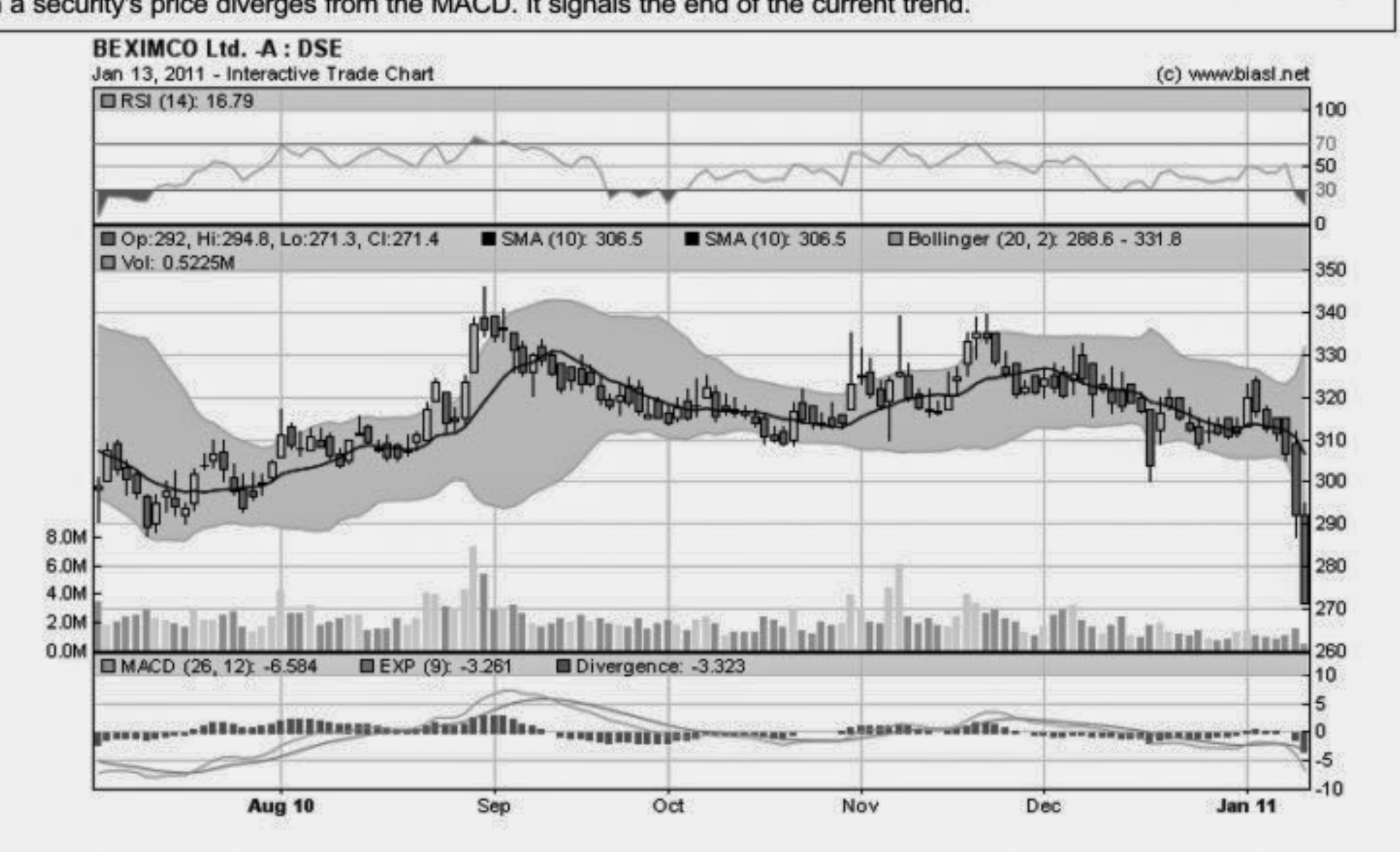
**When to buy or sell**

Investors follow many calculations of corporate performance when deciding if a stock is undervalued or overvalued. These range from the simple price-earnings ratio, or P/E, to far more technical ways of attempting to discern whether a stock is trending up or down. Here are some of the most common.

**RSI (Relative Strength Index):** A technical momentum indicator that compares the size of recent gains to recent losses, in an attempt to determine overbought and oversold conditions of an asset. Stocks with more or strong gains have a higher RSI than stocks that had more or stronger losses. **SMA (Simple Moving Average):** A simple, or arithmetic, moving average is the average stock price over a certain period of time. It adds up the closing price of the security for a given period and then divides the total by the number of intervals. Short-term averages respond quickly to changes in the price of the stock, so appear less steady, while long-term averages are slow to react. **EMA (Exponential Moving Average):** A type of moving average that is similar to a simple moving average, except that more weight is given to the latest data. The exponential moving average is also known as "exponentially weighted moving average". **Bollinger Band:** A band that provides a relative definition of high and low, it was developed by famous technical trader John Bollinger. By definition, prices are high at the upper band and low at the lower band. The band usually plots two standard deviations away from a simple moving average. Because the standard deviation is a measure of volatility, the bands adjust themselves to market conditions. When the markets become volatile, the bands widen (move further away from the average); during less volatile periods, the bands contract. The closer the prices move to the upper band, the more overbought the market, and the closer the prices move to the lower band, the more oversold the market. **MACD (Moving Average Convergence Divergence):** A trend-following momentum indicator that shows the relationship between two moving averages of prices. It is used to spot changes in the strength, direction, momentum, and duration of a trend in a stock's price. **Divergence:** This happens when a security's price diverges from the MACD. It signals the end of the current trend.

**Sectoral P/E & EPS**

Sector	P/E		EPS(%)	
	DSE	CSE	DSE	CSE
Bank	22.99	22.97	37.37	37.37
NBFI	51.51	51.39	44.55	45.23
Investment	43.36	41.05	35.57	35.57
Engineering	38.37	39.90	48.44	45.49
Food & Allied	25.22	24.98	113.38	125.04



Prepared exclusively for Daily Star by Business Information Automation Service Line (BIASLI), on the basis of information collected from daily stock quotations and audited reports of the listed companies. High level of caution has been taken to collect and present the above information and data. The publisher will not take any responsibility if any body uses this information and data for his/her investment decision. For any query please email to biasli@bol-online.com or call 01552153562 or go to www.biasli.net

Notes: Capital Gainer / Loser tables are prepared on the basis of the close price change of the traded issues. "Close" or "C.Price" or "D Clo." is the Closing Price of the day. "Chn %" indicates the price difference in percentage. "Avg" prices indicate weighted average prices of all transactions of the day. "DayHi"/"D Hi" and "DayLo"/"D Lo" indicate the highest and lowest transacted price of the day. "Yr.Hi" and "Yr. Lo" indicate the highest and lowest transacted price last one running year, everyday the range moves by one day. "P Day"=Previous Day. EPS is based on available latest audited accounts of the companies. EPS & Book value per share are diluted at bookclosing date whenever it is applicable. Only the positive earning companies are considered in calculating the PER and EPS of the Sectors and Stock Exchanges.