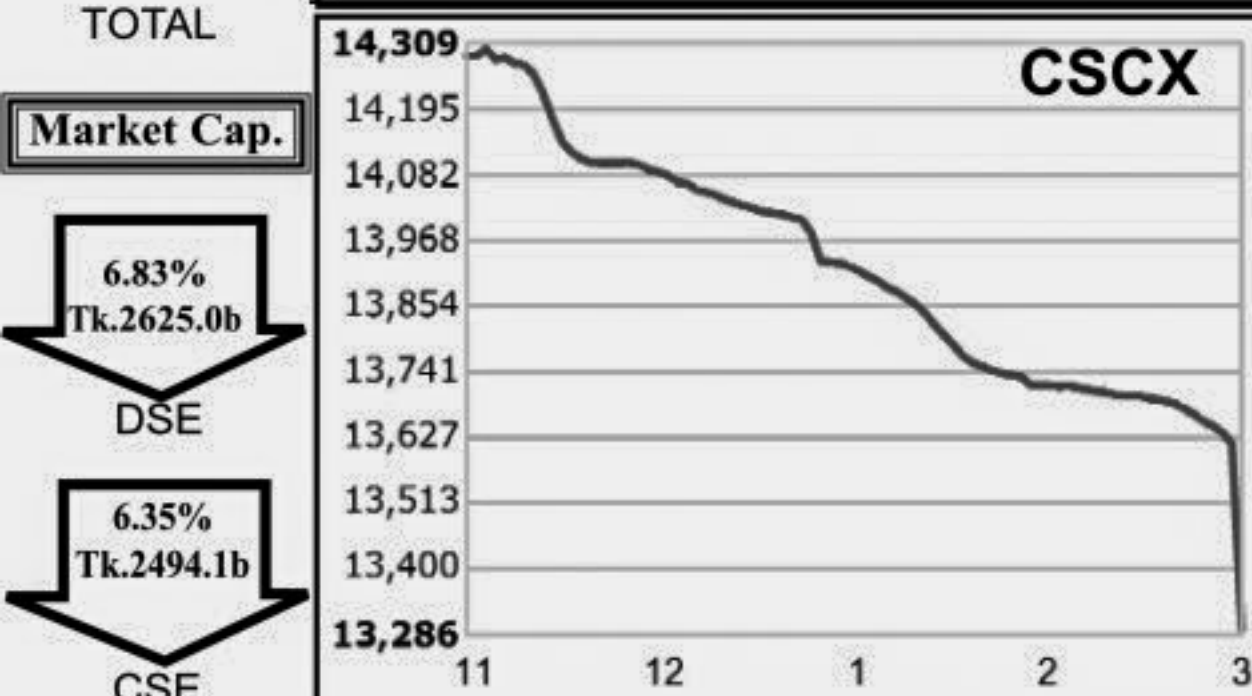
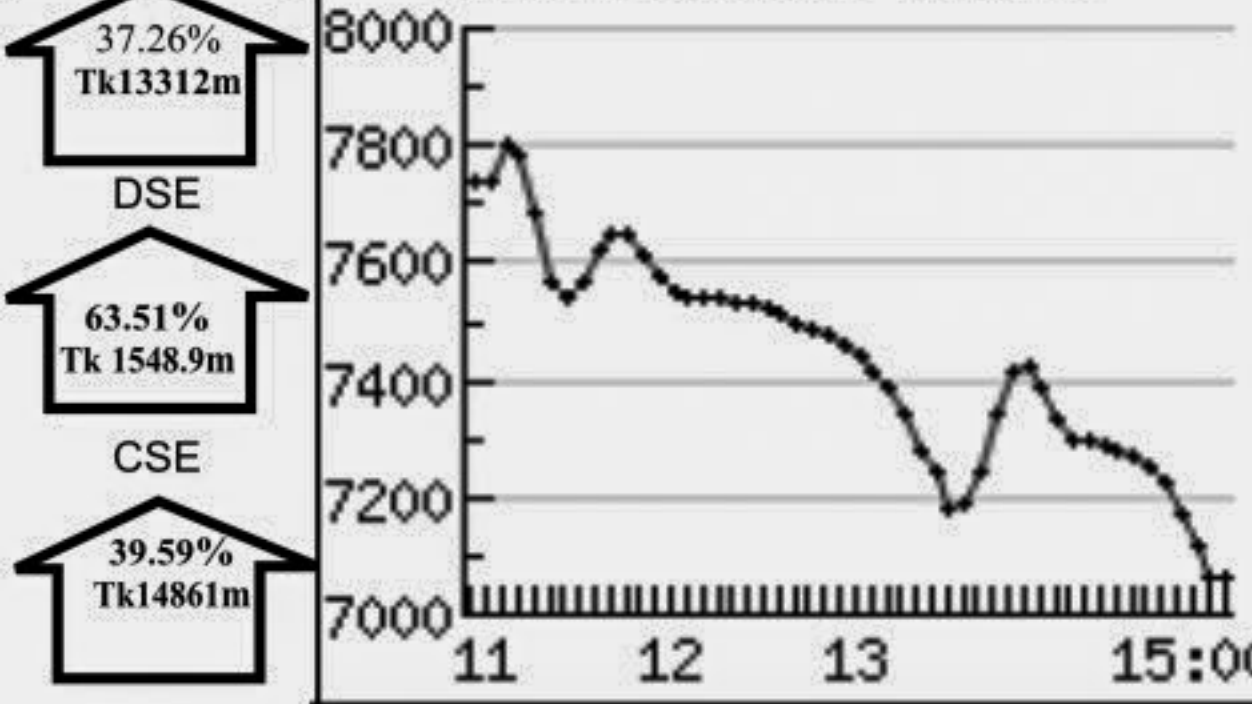


Capital Market Highlights: January 9, 2011

INDEX table showing All Share, DSE General, DSE 20, CSE All Share, CSE CSCX, CSE 30 with their respective price changes and percentages.

Turnover table showing DSE (Tk13312m), CSE (Tk1548.9m), and TOTAL (Tk14861m) with percentage changes.

Market Cap. table showing DSE (Tk2625.0b) and CSE (Tk2494.1b) with percentage changes.



Key Features - January 9

Table of indicators including Turnover (Million Taka), No. of Contract, Traded Issues, Issue Gain/Loss, Market Cap. Equity (Billion Tk./US\$).

Combined Turnover Leaders

Table listing top companies by volume and value, including BEXIMCO Ltd., UCBL, Grameenphone-A, AB Bank, National Bank, etc.

Sectoral Turnover Summary

Table summarizing turnover by sector, including Bank, NBFI, Investment, Engineering, Food & Allied, Fuel & Power, Jute, Textile, Pharma & Chemical, Paper & Packaging, Service, Leather, Ceramic, Cement, IT, General Insurance, Life Insurance, Telecom, Travel & Leisure, Miscellaneous, and Debutenture.

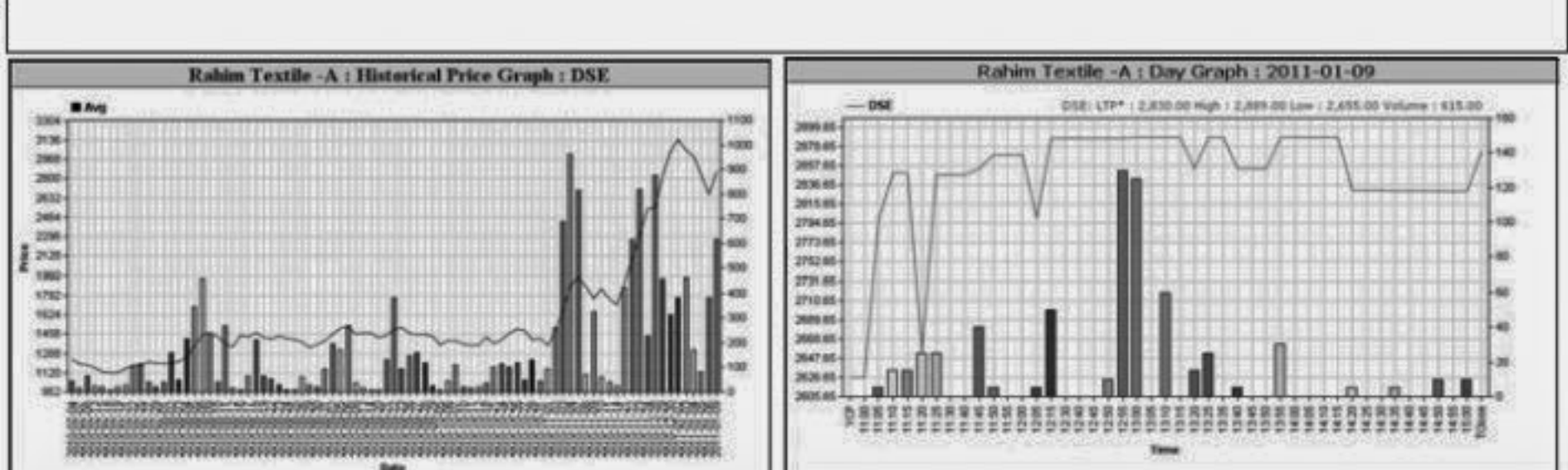
Sectoral P/E & EPS

Table showing P/E and EPS ratios for various sectors like Bank, NBFI, Investment, Engineering, Food & Allied, Fuel & Power, Textile, Pharma & Chemical, Paper & Printing, Service, Leather, Ceramic, Cement, IT, General Insurance, Life Insurance, Telecom, Travel & Leisure, Miscellaneous, and Stock Exchanges.

Disclaimer and contact information for BIASI (Business Information Automation Service Line).

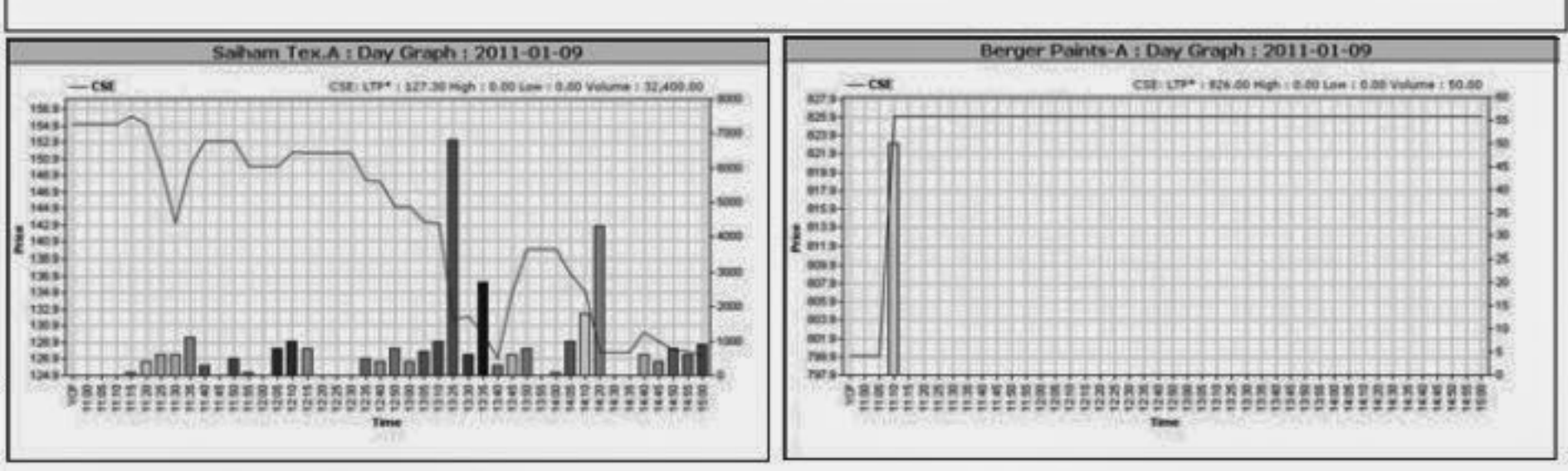
Capital Gainers

Table of capital gainers from the Dhaka Stock Exchange, listing companies like Rahim Textile, Monno Stafflers, and Apex Spinning with their price changes and scales.



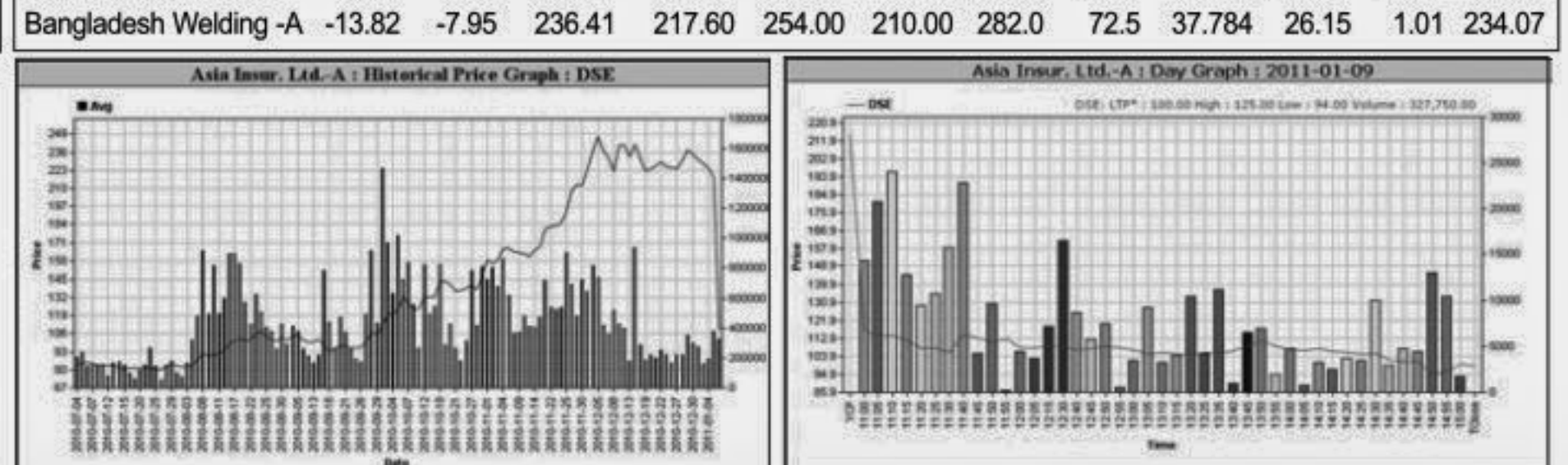
Chittagong Stock Exchange

Table of capital gainers from the Chittagong Stock Exchange, listing companies like Berger Paints and ACI ZERO Bond.



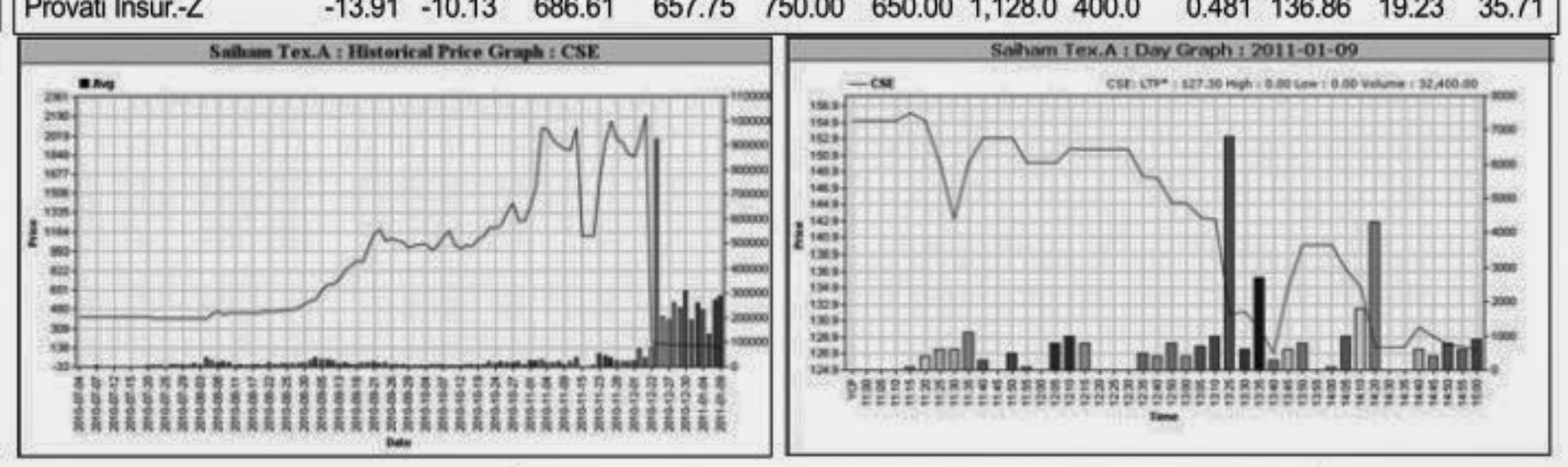
Capital Losers

Table of capital losers from the Dhaka Stock Exchange, listing companies like Asia Insur. Ltd., Saiham Text. A, and Keya Detergent.



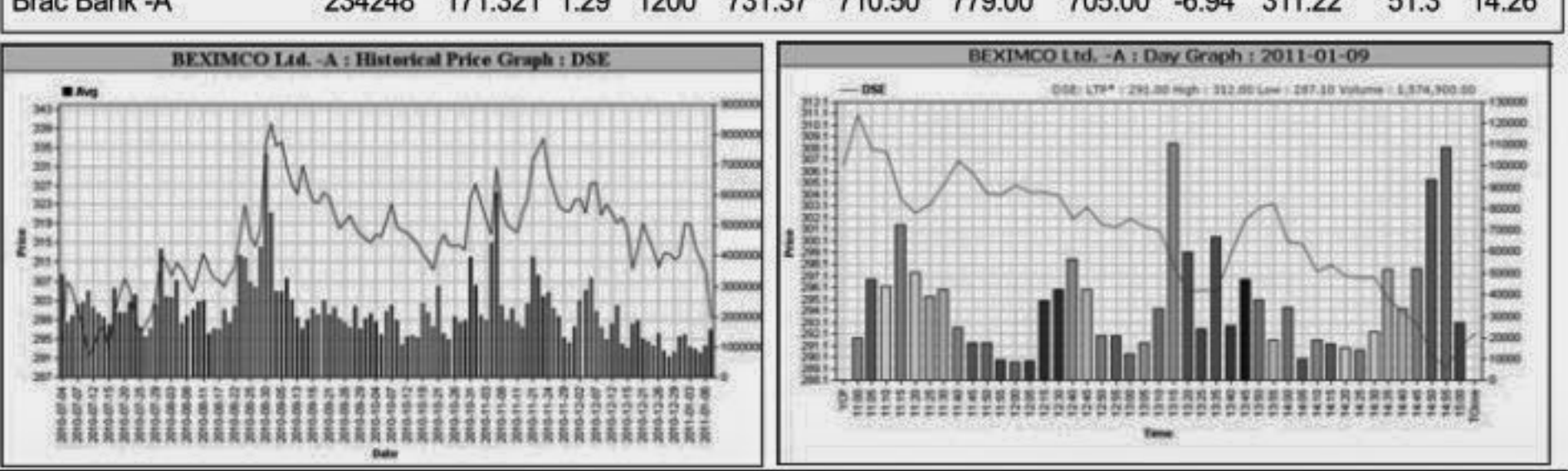
Chittagong Stock Exchange

Table of capital losers from the Chittagong Stock Exchange, listing companies like Saiham Text. A and Berger Paints.



Turnover Leaders

Table of turnover leaders from the Dhaka Stock Exchange, listing companies like BEXIMCO Ltd., National Bank, AB Bank, UCBL, and Grameenphone-A.



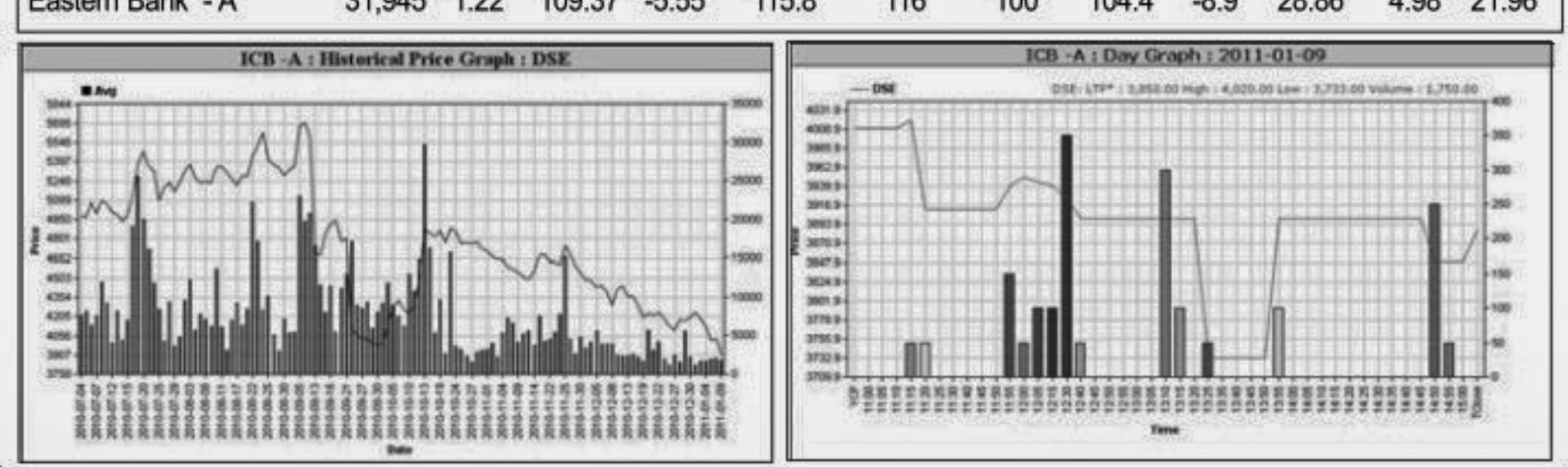
Chittagong Stock Exchange

Table of turnover leaders from the Chittagong Stock Exchange, listing companies like Grameenphone-A, UCBL, AB Bank, BEXIMCO Ltd., Pubali Bank, and National Bank.



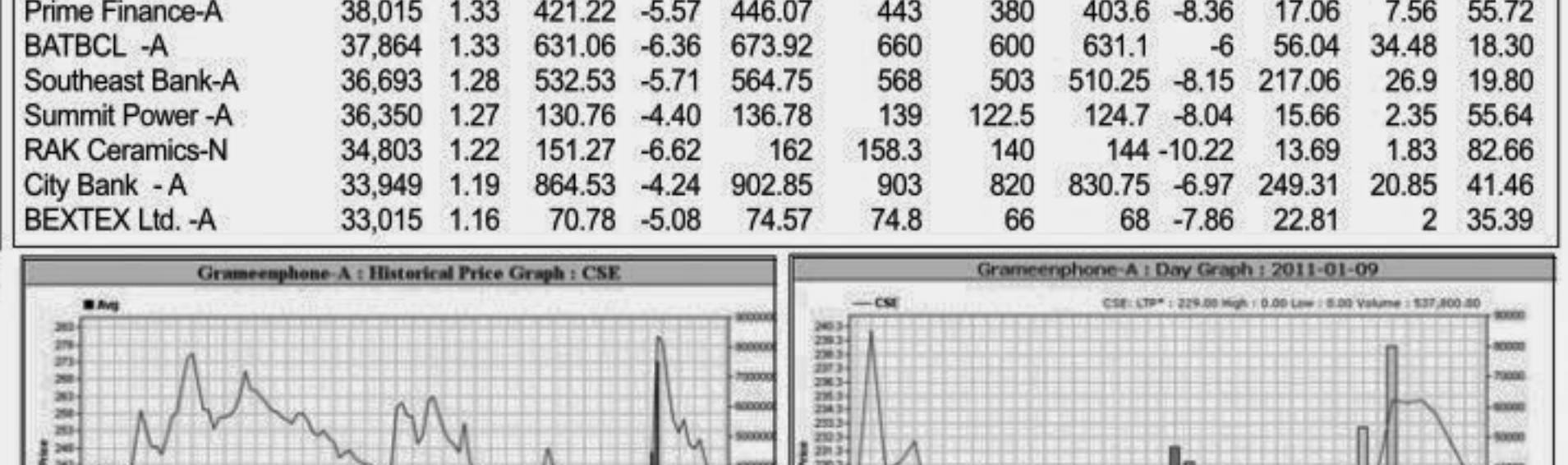
Market Cap. Leader

Table of market cap. leaders from the Dhaka Stock Exchange, listing companies like Grameenphone-A, ICB-A, National Bank, Titas Gas TDCLA, Square Pharma, UCBL, Islami Bank BD, Pubali Bank, AB Bank, Prime Bank, BATBCL, Dutch Bangla B-A, Sumit Power, RAK Ceramics-N, BEXIMCO Ltd., City Bank, and Eastern Bank.



Chittagong Stock Exchange

Table of market cap. leaders from the Chittagong Stock Exchange, listing companies like Grameenphone-A, ICB-A, Popular Life Insu., National Bank, Titas Gas TDCLA, Square Pharma, UCBL, Islami Bank BD, BEXIMCO Ltd., Pubali Bank, AB Bank, Prime Bank, Dutch Bangla B-A, Sumit Power, RAK Ceramics-N, City Bank, and BEXTEX Ltd.



When to buy or sell

Investors follow many calculations of corporate performance when deciding if a stock is undervalued or overvalued. These range from the simple price-earnings ratio, or P/E, to far more technical ways of attempting to discern whether a stock is trending up or down. Here are some of the most common.



Notes: Capital Gainer / Loser tables are prepared on the basis of the close price change of the traded issues. 'Close' or 'C.Price' or 'D Clo.' is the Closing Price of the day. 'Cln %' indicates the price difference in percentage. 'Avg' prices indicate weighted average prices of all transactions of the day. 'DayHi'/'D Hi' and 'DayLo'/'D Lo' indicate the highest and lowest transacted price of the day. 'Yr.Hi' and 'Yr. Lo' indicate the highest and lowest transacted price last one running year, everyday the range moves by one. 'P Day' = Previous Day. EPS is based on available latest audited accounts of the companies. EPS & Book value per share are diluted at bookclosing date whenever it is applicable. Only the positive earning companies are considered in calculating the PER and EPS of the Sectors and Stock Exchanges.