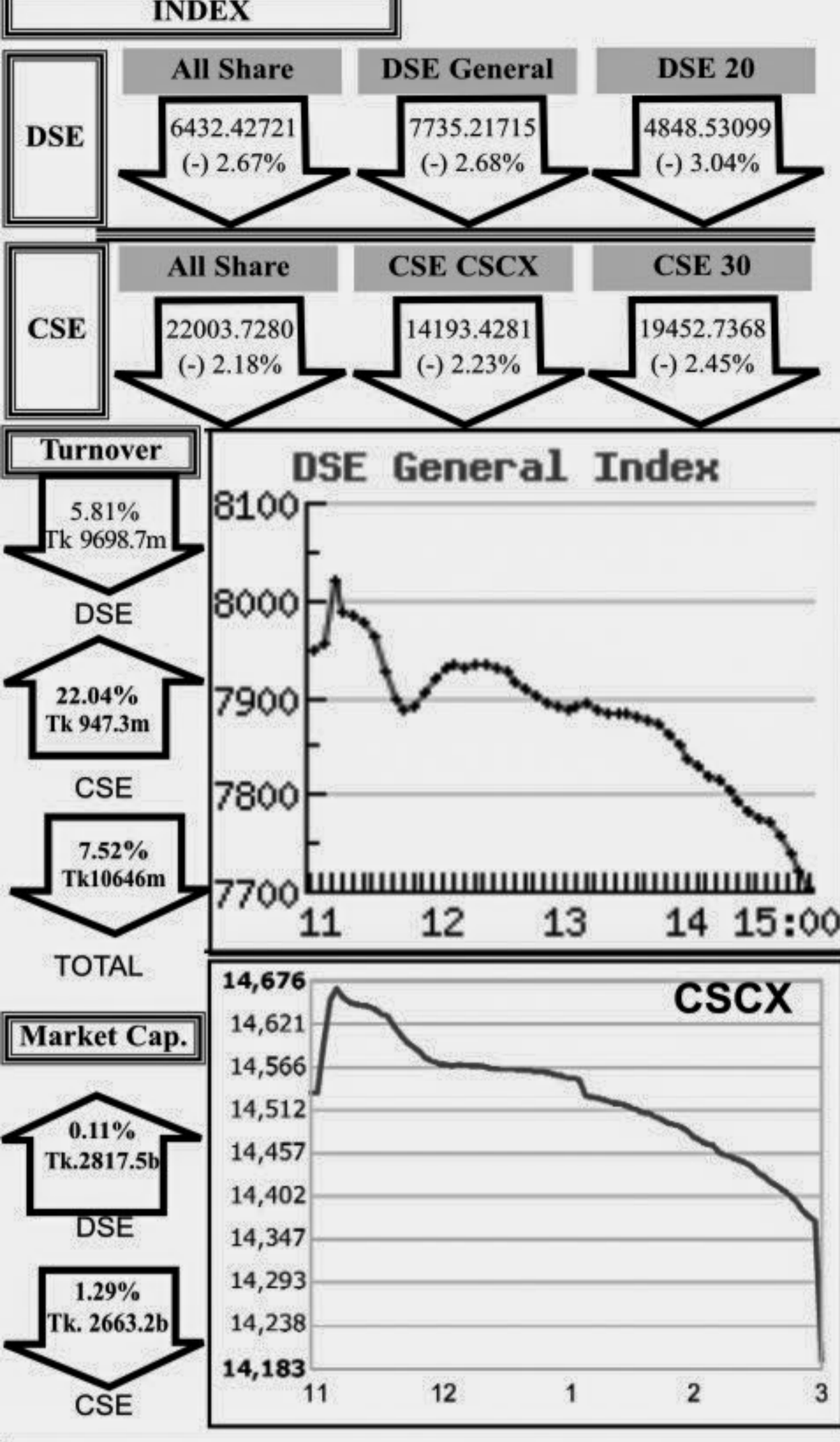


Capital Market Highlights: January 6, 2011

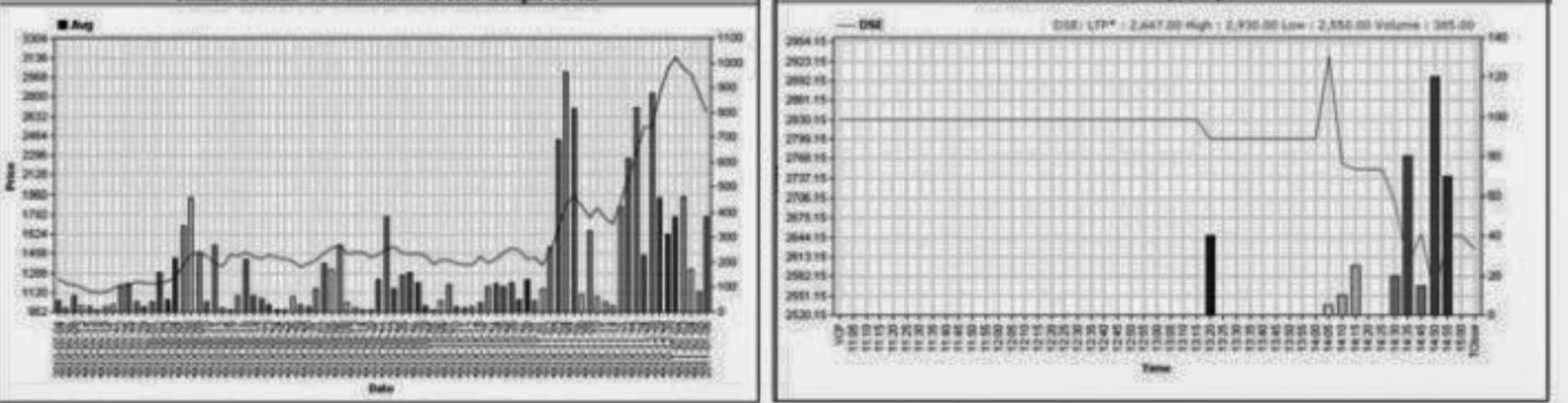
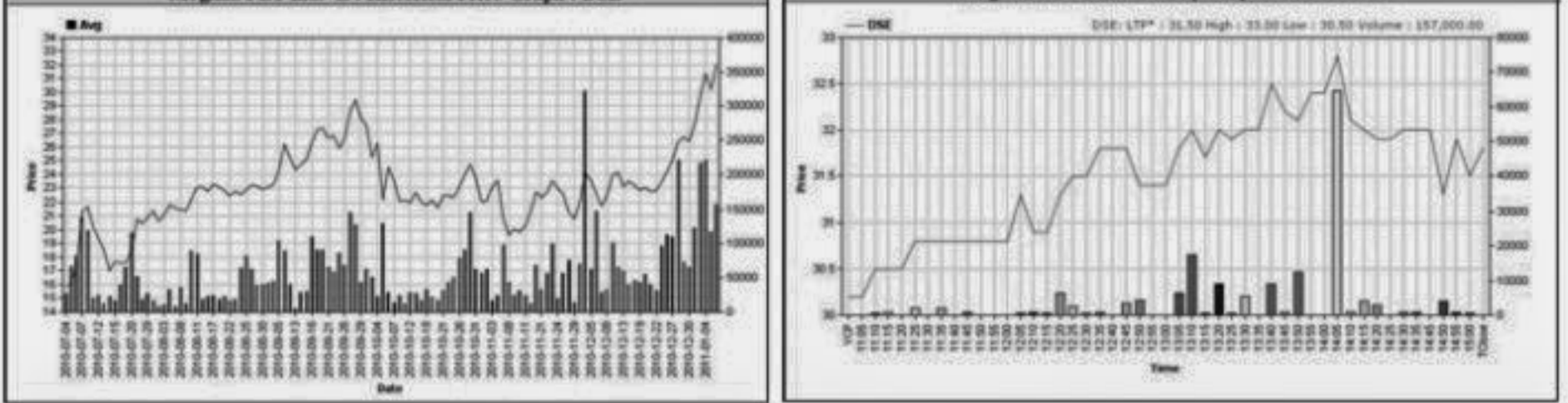


Capital Gainers Dhaka Stock Exchange

Table of Dhaka Stock Exchange Capital Gainers with columns: Company, Price Chn. (%), Price Scale, Turnover, BookV, etc. Includes Meghna PET Ind.-Z, GeminiSeaFoodA, Grameen M F One-A, etc.

Capital Losers Dhaka Stock Exchange

Table of Dhaka Stock Exchange Capital Losers with columns: Company, Price Chn. (%), Price Scale, Turnover, BookV, etc. Includes Rahim Textile -A, Chittagong Veg.-Z, Saffko Spinning-Z, etc.

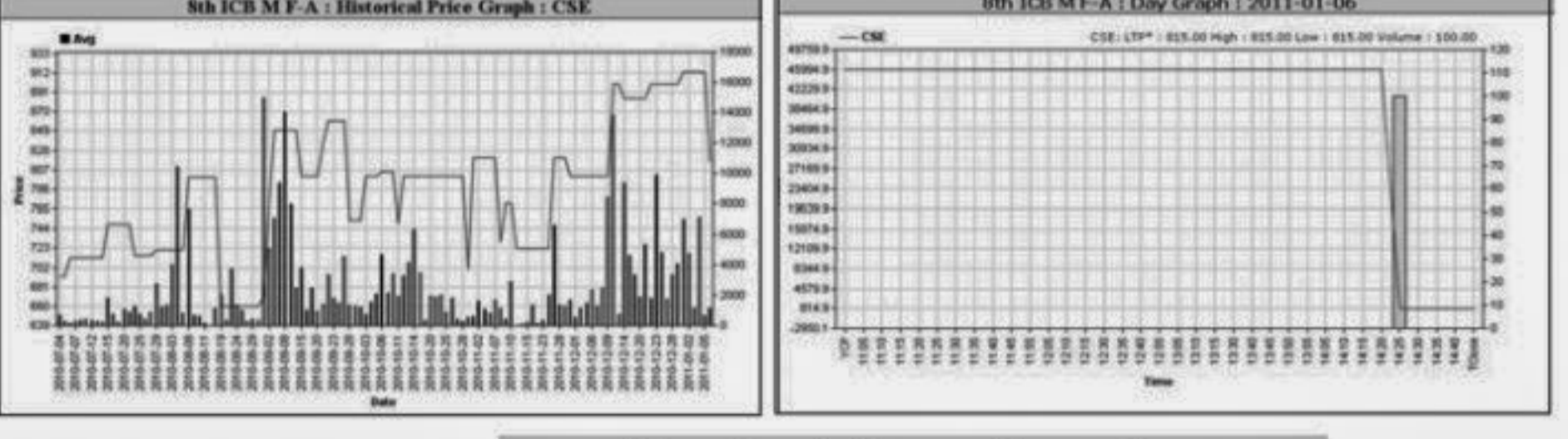
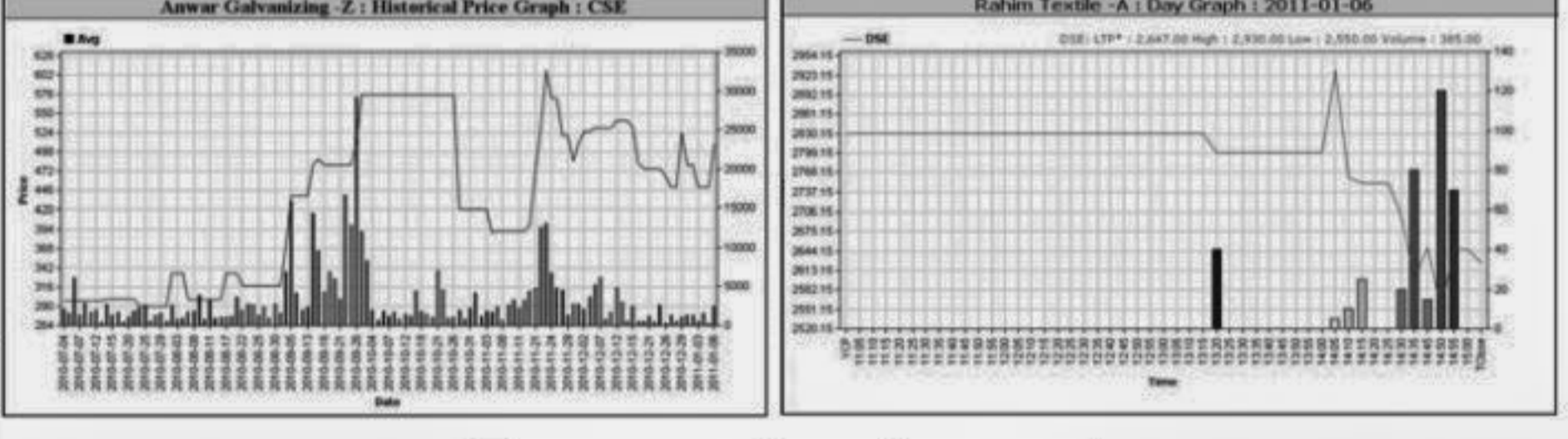


Chittagong Stock Exchange

Table of Chittagong Stock Exchange with columns: Company, Price Chn. (%), Price Scale, Turnover, BookV, etc. Includes Anwar Galvanizing-Z, Central Insur-A, Delta Brac HFCL-A, etc.

Chittagong Stock Exchange

Table of Chittagong Stock Exchange with columns: Company, Price Chn. (%), Price Scale, Turnover, BookV, etc. Includes 8th ICB M F-A, Intl. Leasing-A, Sinobangla Indu.-B, etc.



Key Features - January 6

Table of Key Features: Indicators (Turnover, No. of Contract, Traded Issues, etc.), DSE, CSE, TOTAL values.

Turnover Leaders Dhaka Stock Exchange

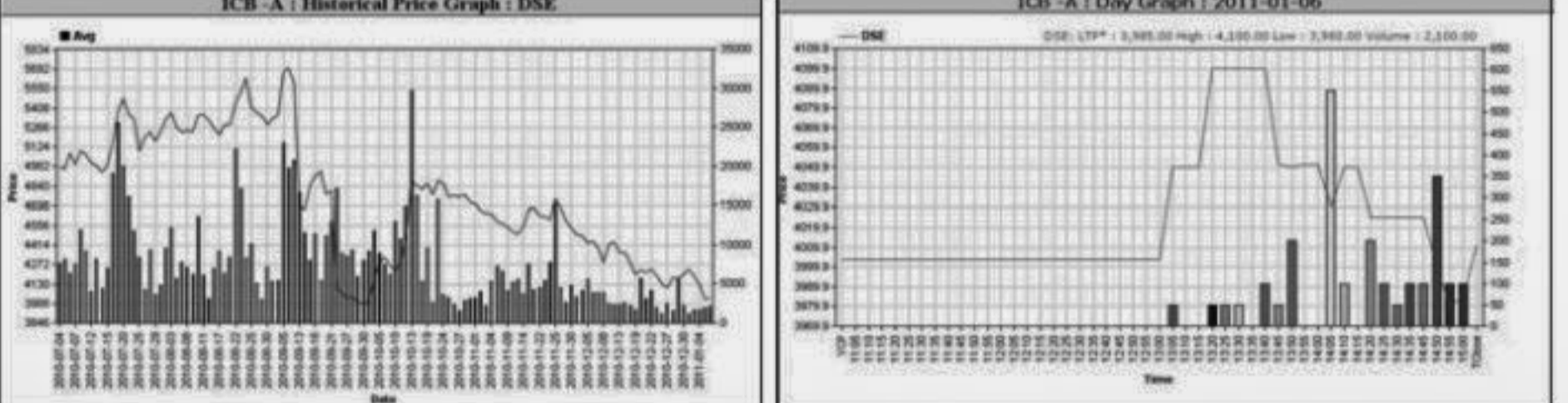
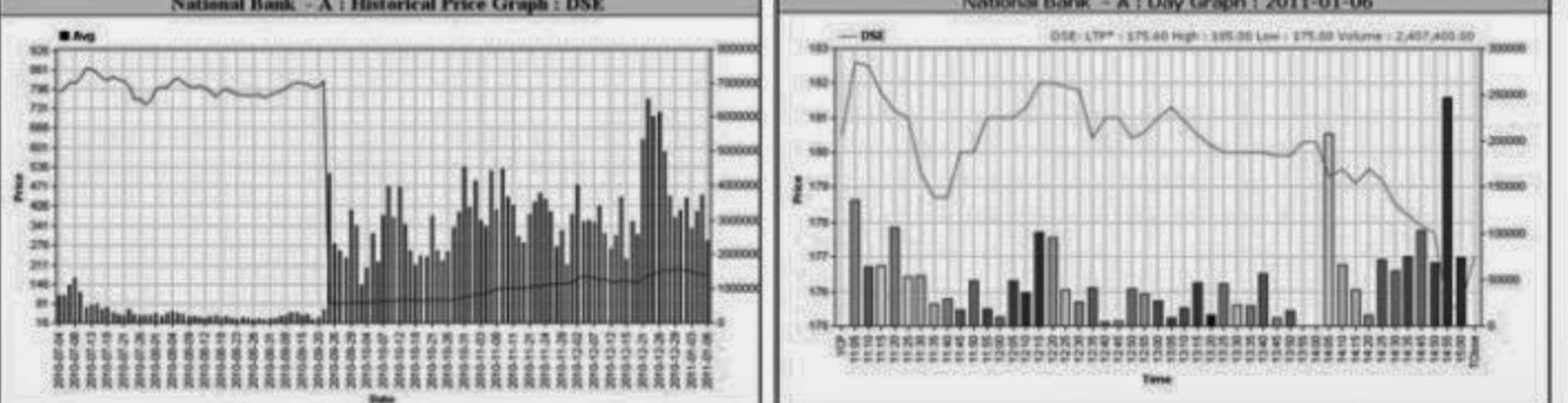
Table of Dhaka Stock Exchange Turnover Leaders with columns: Company, Vol., Value, % of Big, Price Scale, C.Pite, BookV, etc. Includes National Bank -A, Bay Leasing-A, UNITED AIR-N, etc.

Market Cap. Leader Dhaka Stock Exchange

Table of Dhaka Stock Exchange Market Cap. Leaders with columns: Company, Market Cap., % of M. Tk., Average, Price Scale, BookV, etc. Includes Grameenphone-A, ICB -A, National Bank -A, etc.

Combined Turnover Leaders

Table of Combined Turnover Leaders with columns: Company, Volume, Value, %of, Average Price. Includes National Bank -A, UNITED AIR-N, Bay Leasing-A, etc.

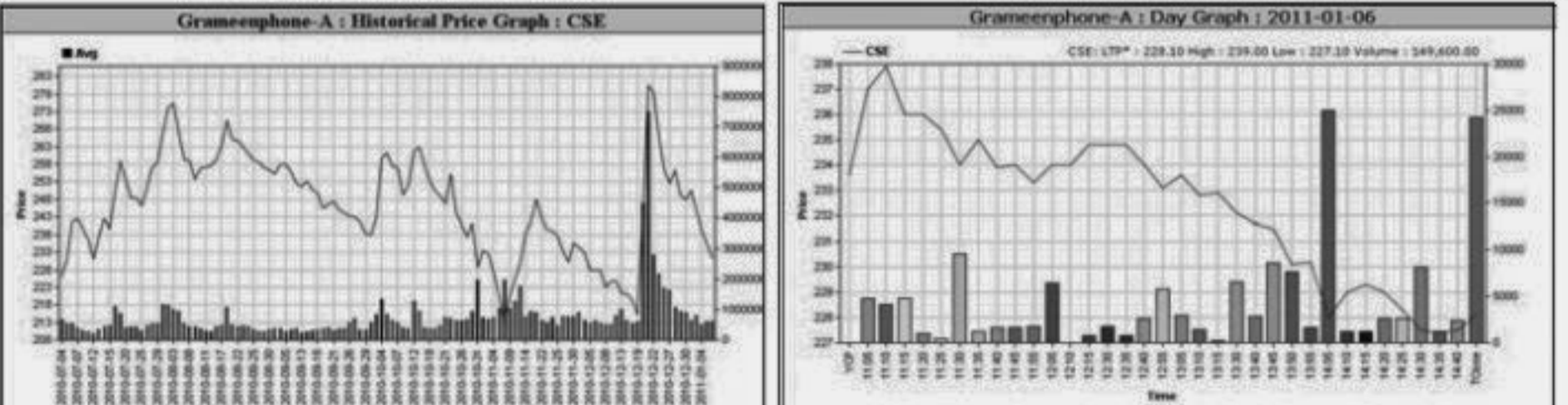
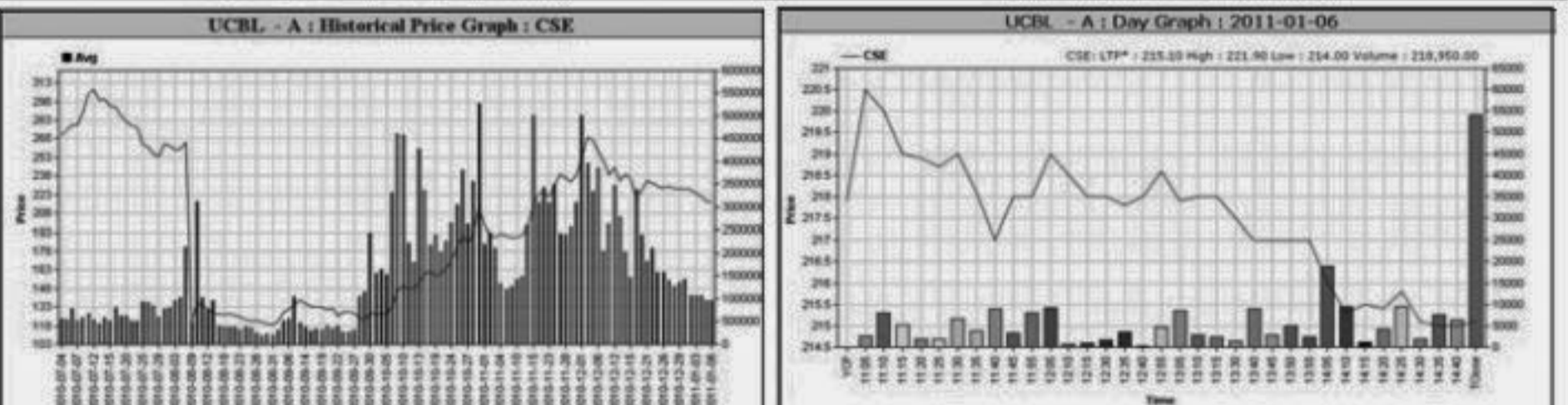


Chittagong Stock Exchange

Table of Chittagong Stock Exchange with columns: Company, Price Chn. (%), Price Scale, Turnover, BookV, etc. Includes UCBL -A, BEXTEX Ltd.-A, Southeast Bank-A, etc.

Chittagong Stock Exchange

Table of Chittagong Stock Exchange with columns: Company, Market Cap., % of M. Tk., Average, Price Scale, BookV, etc. Includes Grameenphone-A, ICB -A, National Bank -A, etc.



Sectoral Turnover Summary

Table of Sectoral Turnover Summary with columns: Sector, DSE, CSE, Total, Mil. Tk., %. Includes Bank, NBFI, Investment, etc.

Sectoral P/E & EPS

Table of Sectoral P/E & EPS with columns: Sector, P/E, EPS(%), DSE, CSE. Includes Bank, NBFI, Investment, etc.

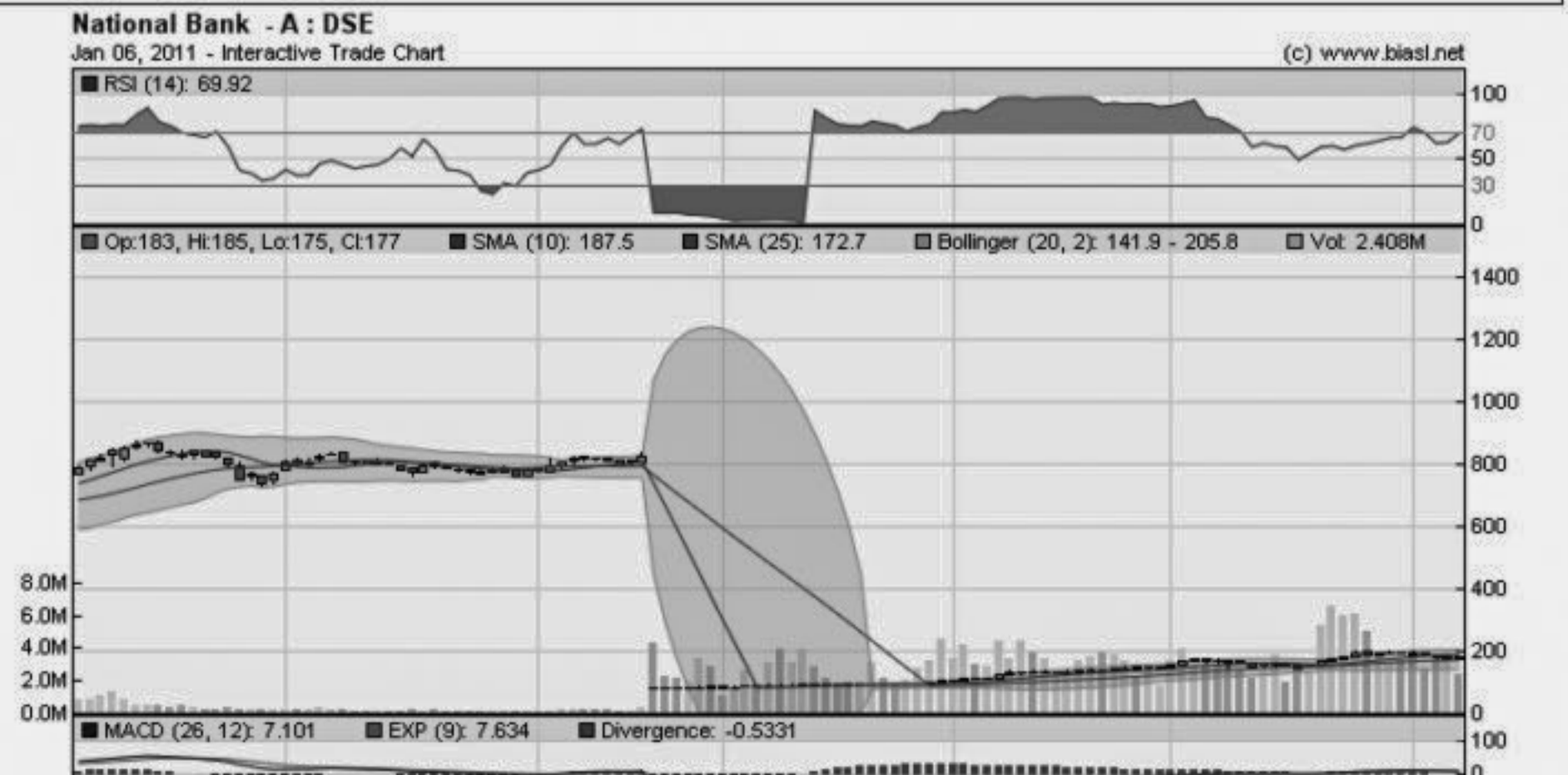
When to buy or sell

Investors follow many calculations of corporate performance when deciding if a stock is undervalued or overvalued. These range from the simple price-earnings ratio, or P/E, to far more technical ways of attempting to discern whether a stock is trending up or down. Here are some of the most common.



When to buy or sell

Investors follow many calculations of corporate performance when deciding if a stock is undervalued or overvalued. These range from the simple price-earnings ratio, or P/E, to far more technical ways of attempting to discern whether a stock is trending up or down. Here are some of the most common.



Prepared exclusively for Daily Star by Business Information Automation Service Line (BIASL) on the basis of information collected from daily stock quotations and audited reports of the listed companies.

Notes: Capital Gainer / Loser tables are prepared on the basis of the close price change of the traded issues. "Close" or "C.Price" or "D Clo." is the Closing Price of the day. "Chn %" indicates the price difference in percentage. "Avg" prices indicate weighted average prices of all transactions of the day. "DayHi"/"D Hi" and "DayLo"/"D Lo" indicate the highest and lowest transacted price of the day. "Yr.Hi" and Yr. Lo" indicate the highest and lowest transacted price last one running year, everyday the range moves by one. "P Day" Previous Day EPS is based on available latest audited accounts of the companies. EPS & Book value per share are diluted at bookclosing date whenever it is applicable. Only the positive earning companies are considered in calculating the PER and EPS of the Sectors and Stock Exchanges.