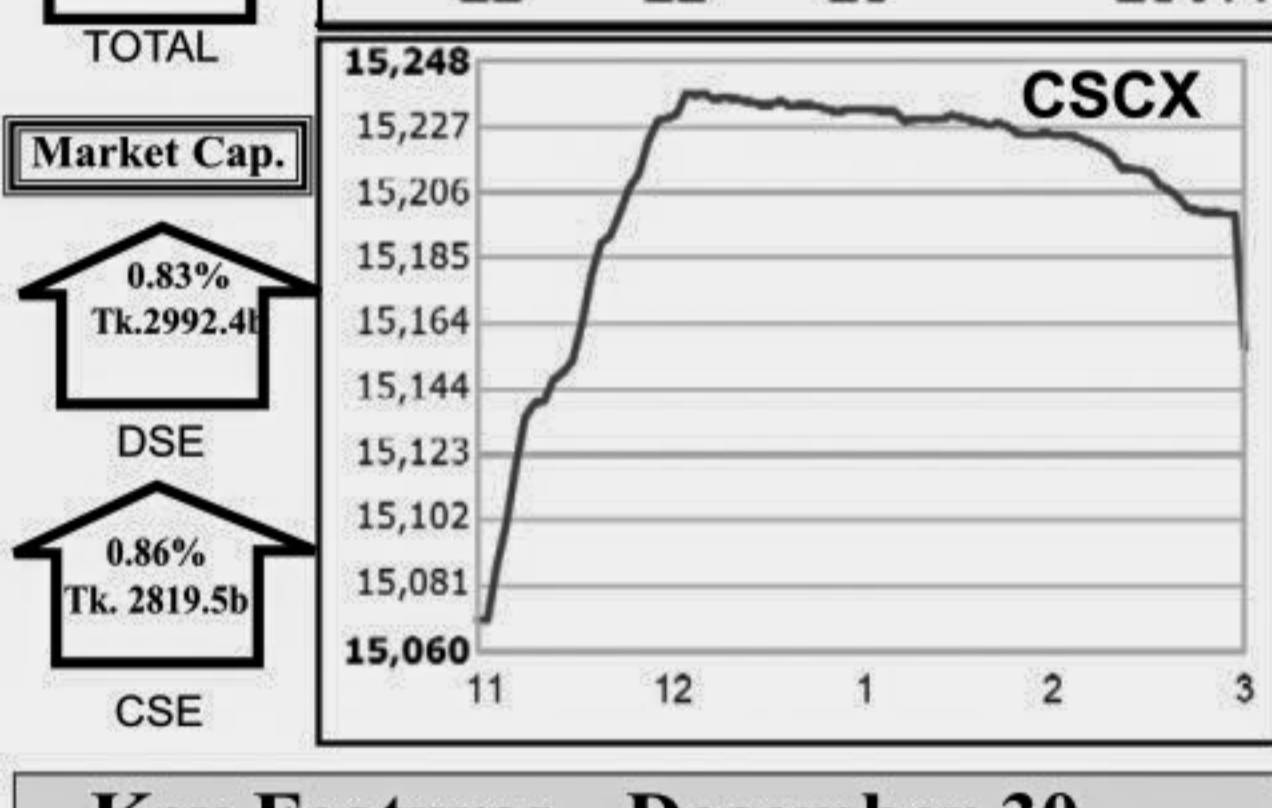
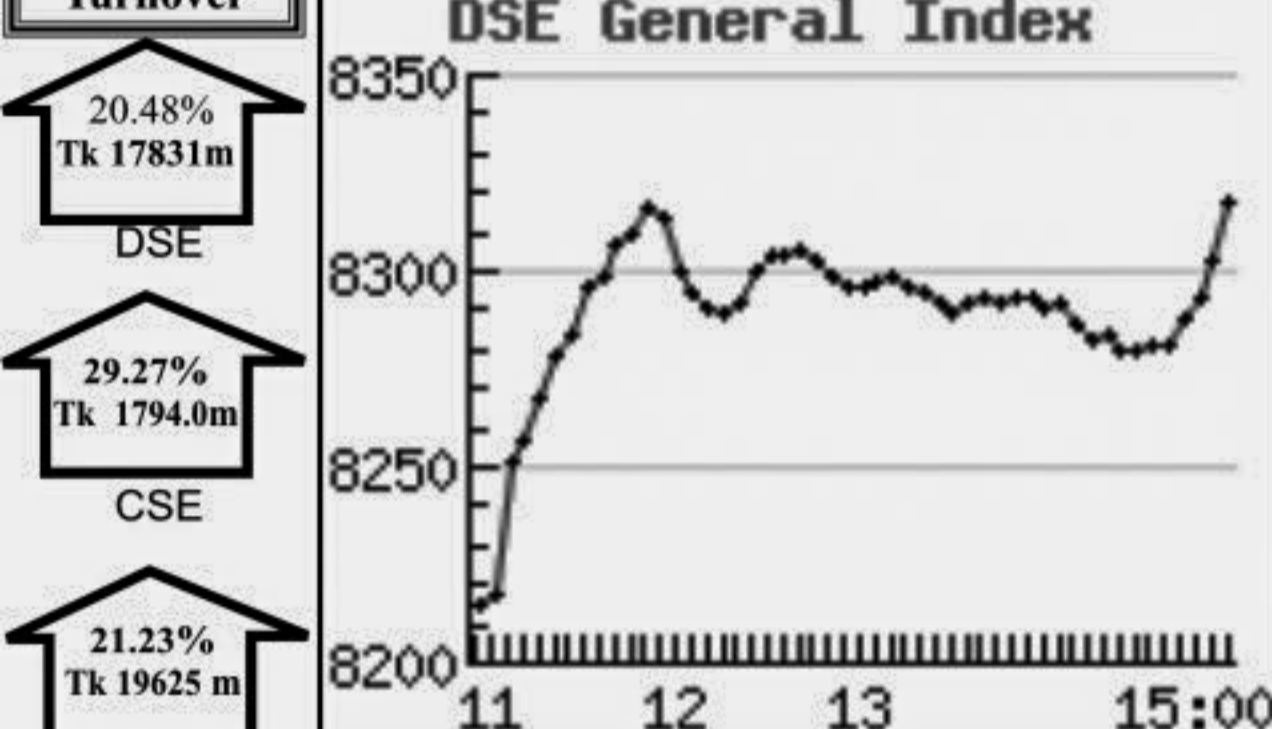


Capital Market Highlights: December 30, 2010

INDEX table showing DSE All Share (+0.93%), DSE General (+0.92%), DSE 20 (+0.04%), CSE All Share (+0.64%), CSE CSCX (+0.64%), CSE 30 (+0.39%)



Key Features - December 30

Table with 3 columns: Indicators, DSE, CSE, TOTAL. Rows include Turnover (Million Taka), Turnover (Volume), No. of Contract, Traded Issues, Issue Gain/Loss, etc.

Combined Turnover Leaders

Table with 5 columns: Company, Volume (Share), Value (M. Taka), % of Total, Average Price. Lists top performing companies like Southeast Bank-A, Prime Bank-A, etc.

Sectoral Turnover Summary

Table with 5 columns: Sector, DSE (Mill. Tk), CSE (Mill. Tk), Total (Mill. Tk), %. Lists sectors like Bank, NBFI, Investment, etc.

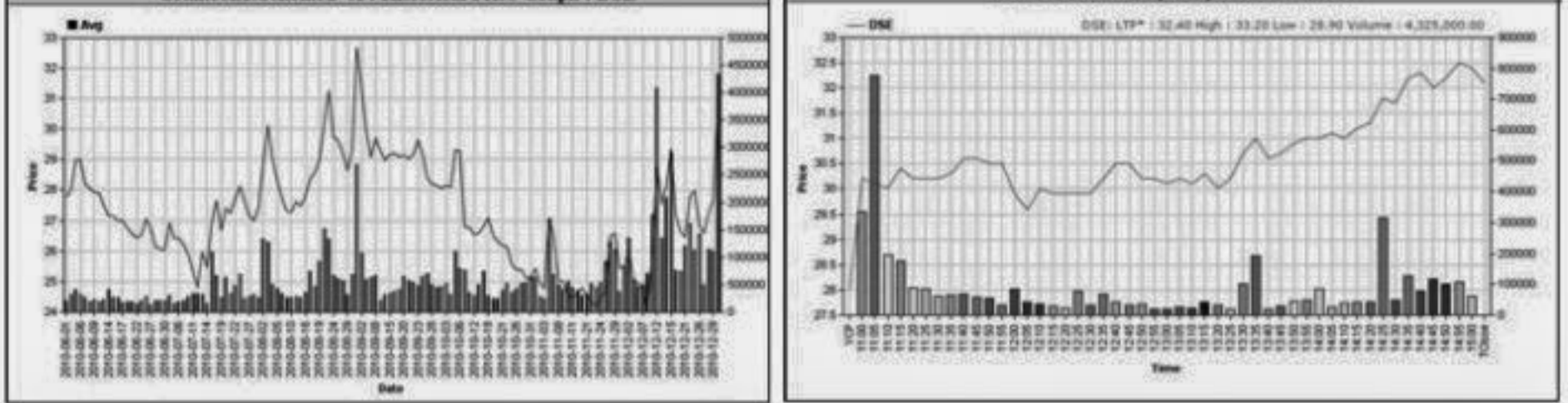
Sectoral P/E & EPS

Table with 5 columns: Sector, P/E (DSE, CSE), EPS (% DSE, CSE). Lists sectors and their respective P/E and EPS ratios.

Prepared exclusively for Daily Star by Business Information Automation Service Line (BIASI), on the basis of information collected from daily stock quotations and audited reports of the listed companies.

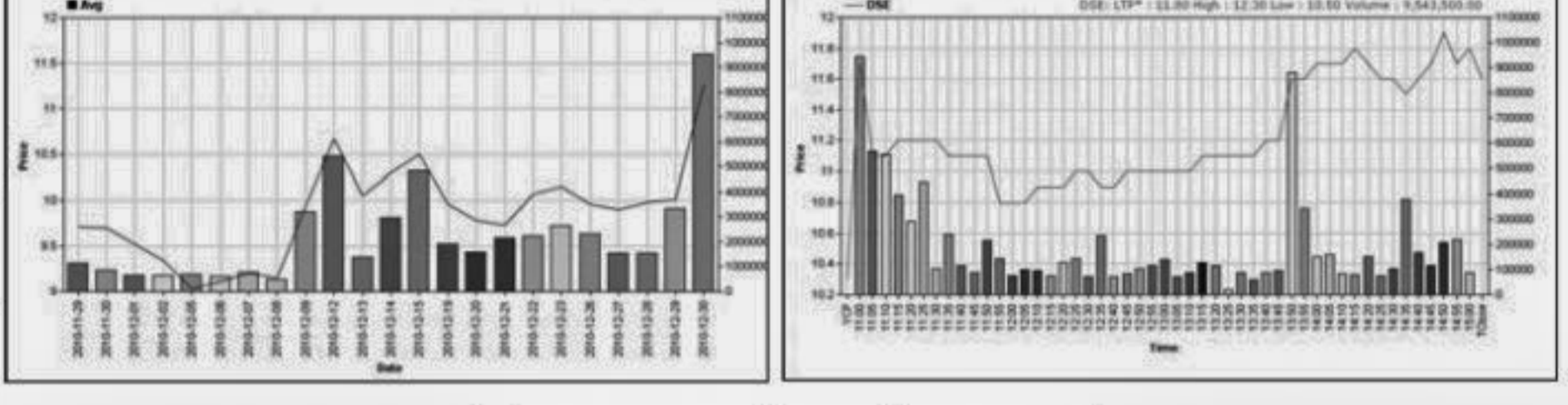
Capital Gainers

Dhaka Stock Exchange table listing top gainers with columns: Company, Price Chn. (%), Price Scale, Turnover, BookV. Includes Grameen1:Scheme2-A, CMC Kamal Tex.-A, etc.



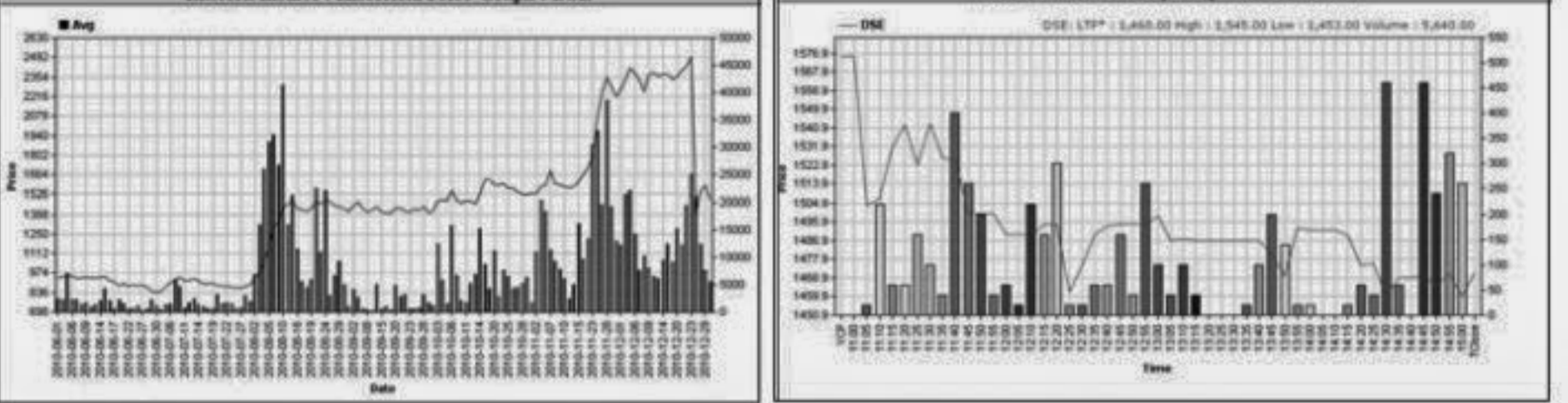
Chittagong Stock Exchange

Chittagong Stock Exchange table listing top gainers with columns: Company, Price Chn. (%), Price Scale, Turnover, BookV. Includes PHP 1st M. F.-A, Grameen1:Scheme2-A, etc.



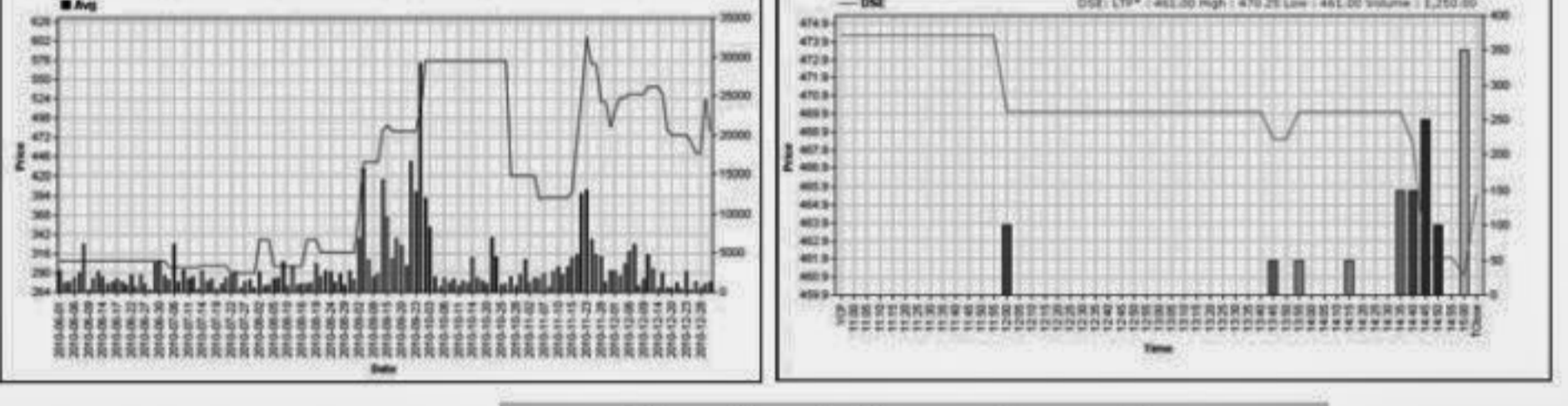
Capital Losers

Dhaka Stock Exchange table listing top losers with columns: Company, Price Chn. (%), Price Scale, Turnover, BookV. Includes Eastern InsurA, Mercantile Insur-A, etc.



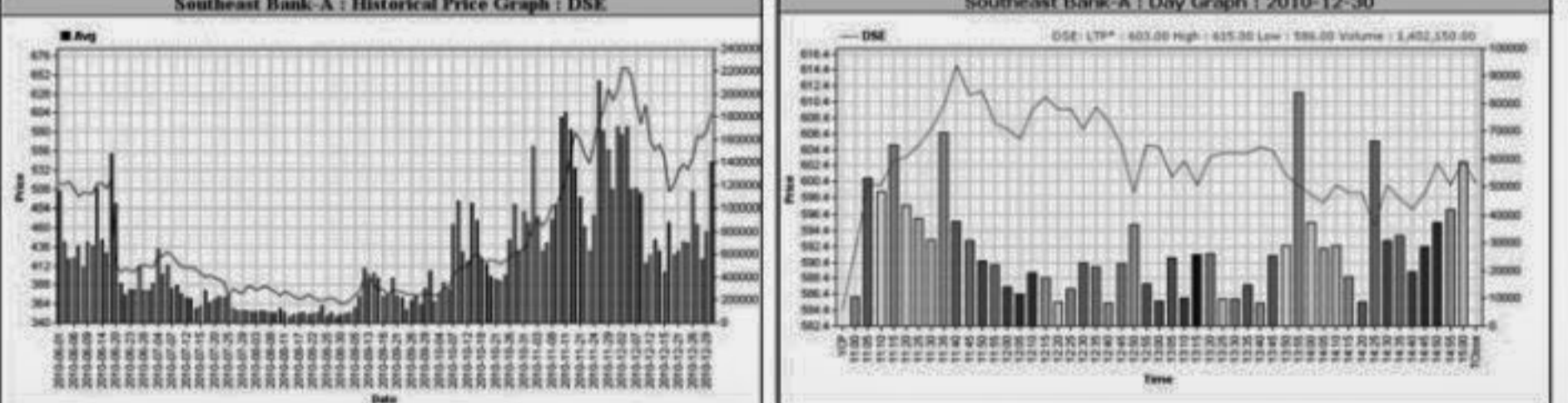
Chittagong Stock Exchange

Chittagong Stock Exchange table listing top losers with columns: Company, Price Chn. (%), Price Scale, Turnover, BookV. Includes Anwar Galvanizing-Z, Chittagong Veg.-Z, etc.



Turnover Leaders

Dhaka Stock Exchange table listing top turnover leaders with columns: Company, Vol., Value, % of Total, Price Scale, C. Pts, BookV. Includes Southeast Bank-A, Prime Bank-A, etc.



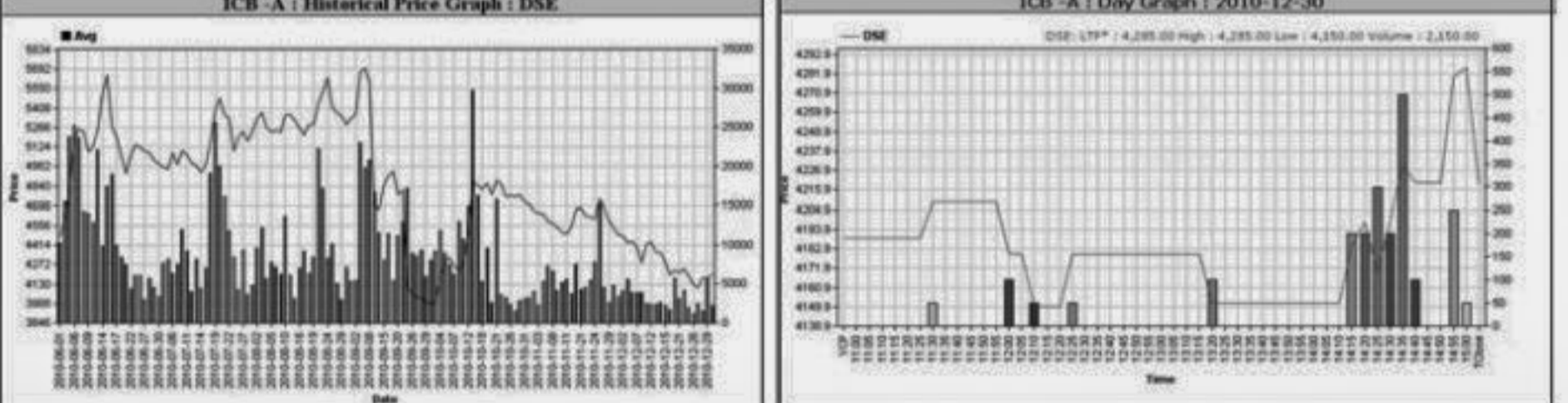
Chittagong Stock Exchange

Chittagong Stock Exchange table listing top turnover leaders with columns: Company, Vol., Value, % of Total, Price Scale, C. Pts, BookV. Includes Southeast Bank-A, AB Bank -A, etc.



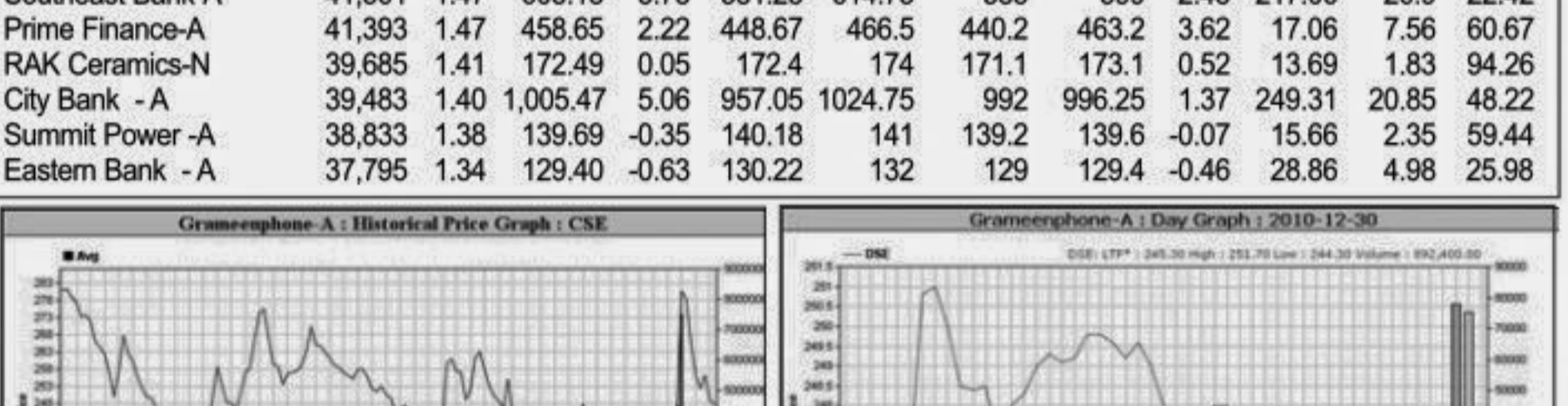
Market Cap. Leader

Dhaka Stock Exchange table listing market cap leaders with columns: Company, Market Cap., % of Total, Average Price, Price Scale, BookV. Includes Grameenphone-A, ICB -A, etc.



Chittagong Stock Exchange

Chittagong Stock Exchange table listing market cap leaders with columns: Company, Market Cap., % of Total, Average Price, Price Scale, BookV. Includes Grameenphone-A, ICB -A, etc.



When to buy or sell

Investors follow many calculations of corporate performance when deciding if a stock is undervalued or overvalued. These range from the simple price-earnings ratio, or P/E, to far more technical ways of attempting to discern whether a stock is trending up or down. Here are some of the most common.



Notes: Capital Gainer / Loser tables are prepared on the basis of the close price change of the traded issues. "Close" or "C.Price" or "D Clo." is the Closing Price of the day. "Chn %" indicates the price difference in percentage.