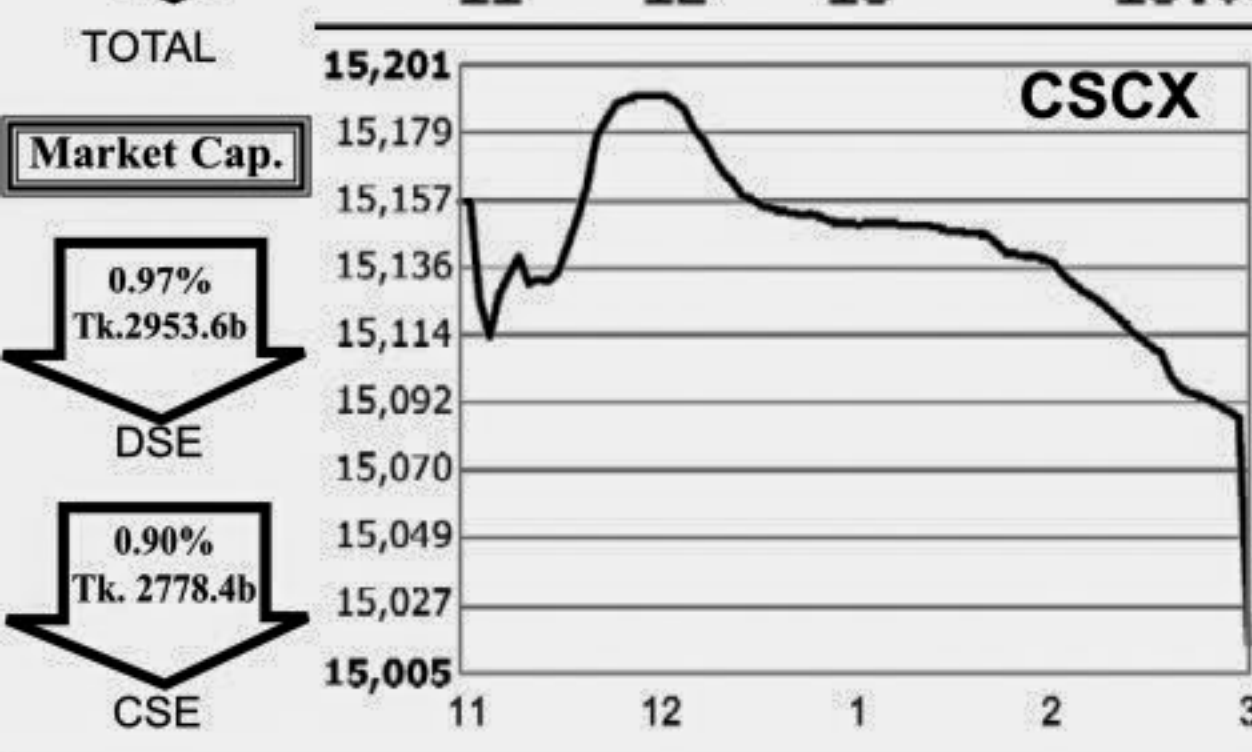
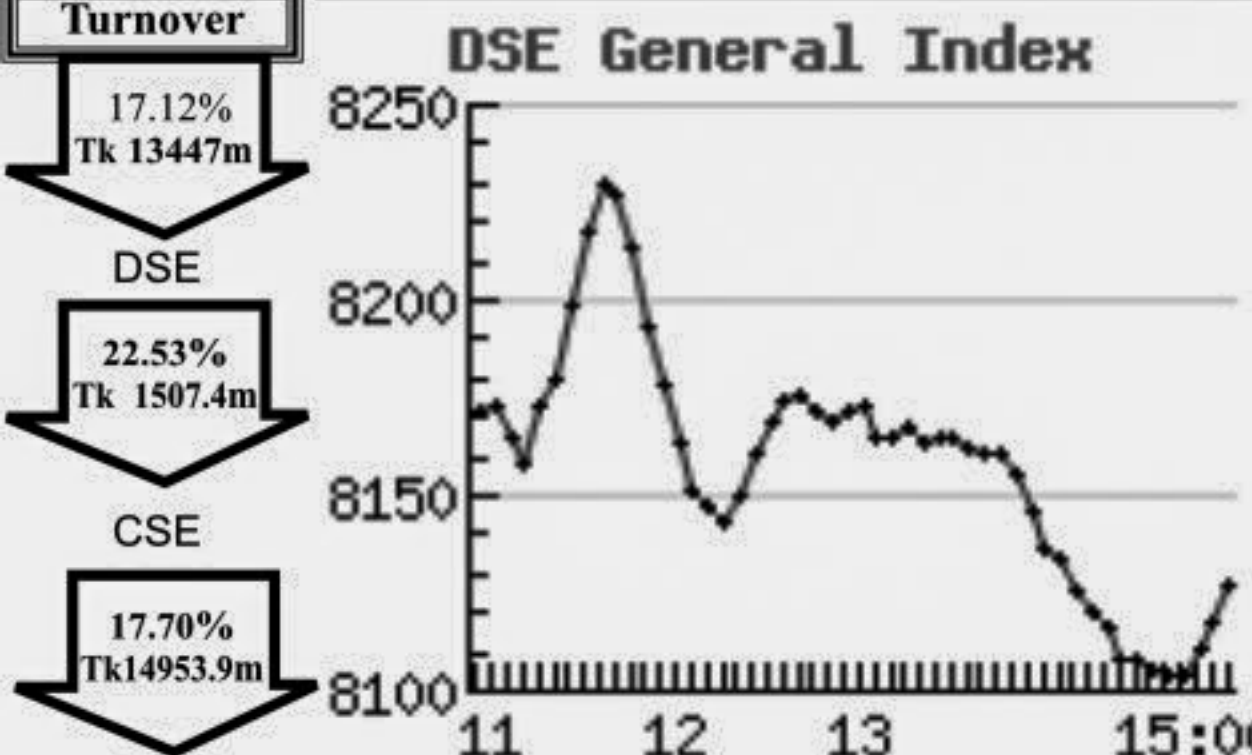
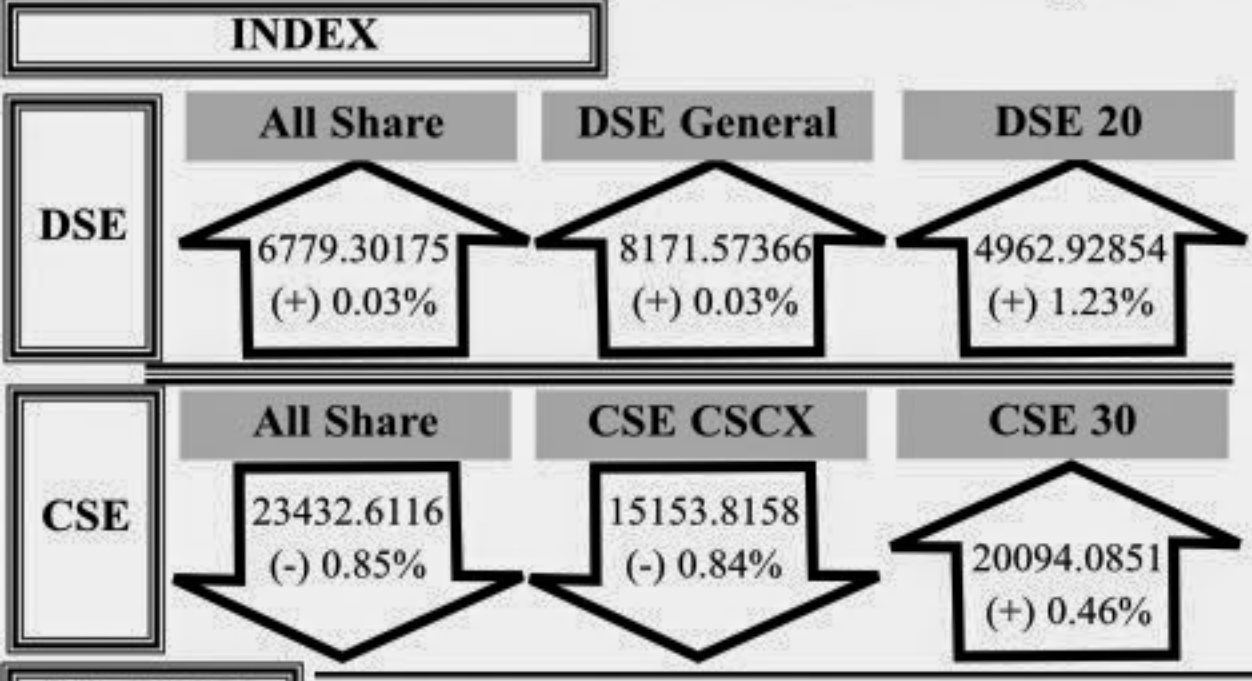


Capital Market Highlights: December 23, 2010



Key Features - December 23. Indicators: Turnover (Million Taka), Turnover (Volume), No. of Contract, Traded Issues, Issue Gain, Issue Loss, Unchanged Issue, Market Cap. Equity (Billion Tk.), Market Cap. Equity (Billion US\$).

Combined Turnover Leaders

Table of Combined Turnover Leaders with columns: Company, Volume (Share), Value (M. Taka), % of Total, Average Price.

Sectoral Turnover Summary

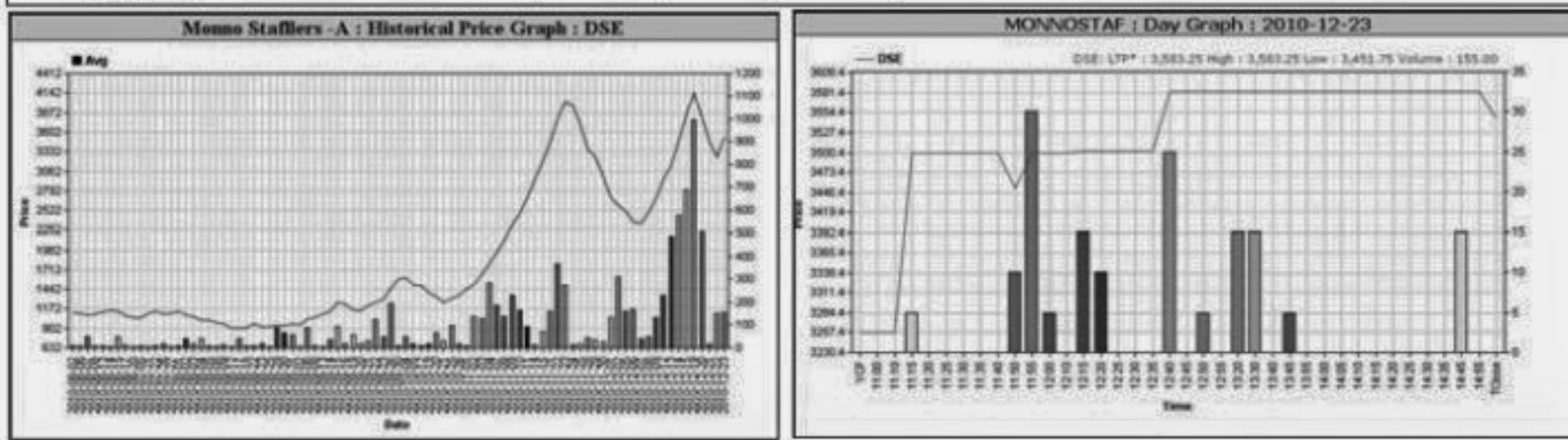
Table of Sectoral Turnover Summary with columns: Sector, DSE (Mill. Tk.), CSE (Mill. Tk.), Total (Mill. Tk.), %.

Sectoral P/E & EPS

Table of Sectoral P/E & EPS with columns: Sector, DSE P/E, CSE P/E, DSE EPS(%), CSE EPS(%).

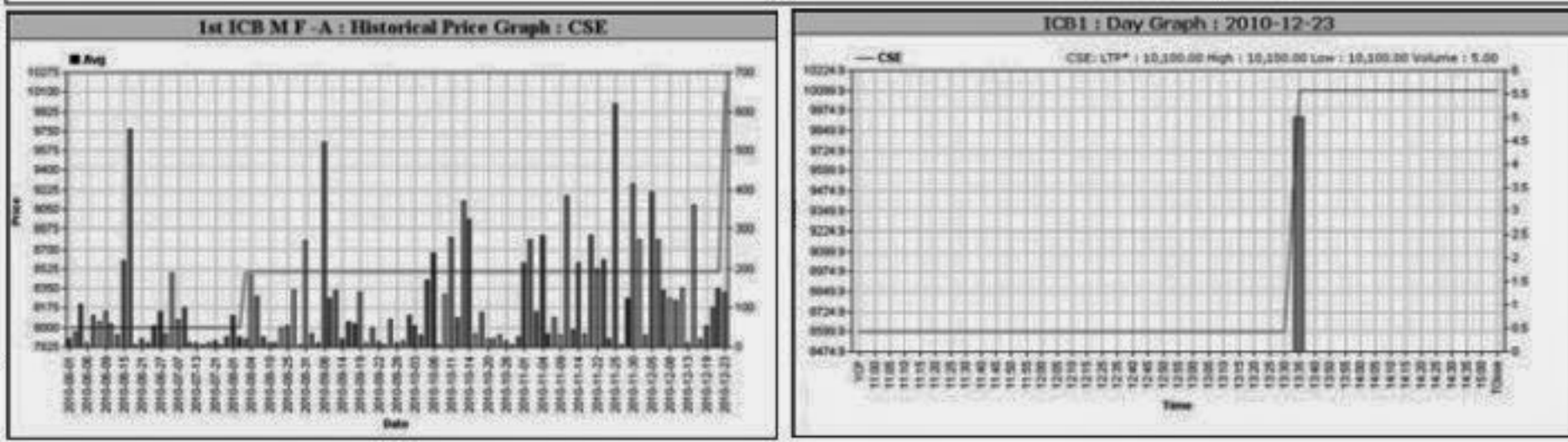
Capital Gainers

Table of Capital Gainers from Dhaka Stock Exchange with columns: Company, Price Chn. (%), Price Scale, Turnover, BookV.



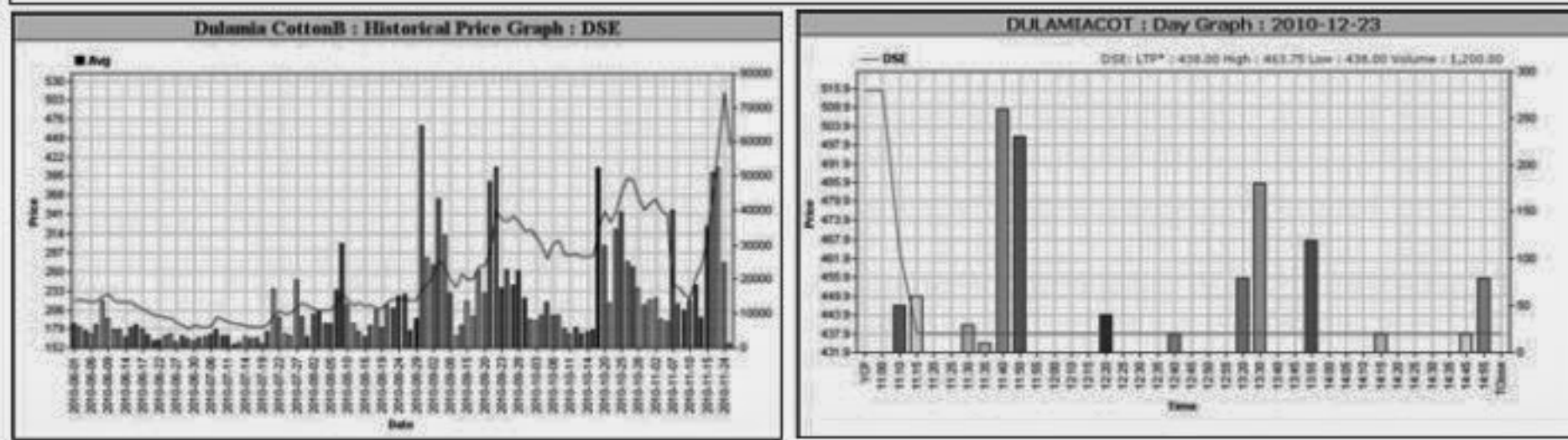
Chittagong Stock Exchange

Table of Capital Gainers from Chittagong Stock Exchange with columns: Company, Price Chn. (%), Price Scale, Turnover, BookV.



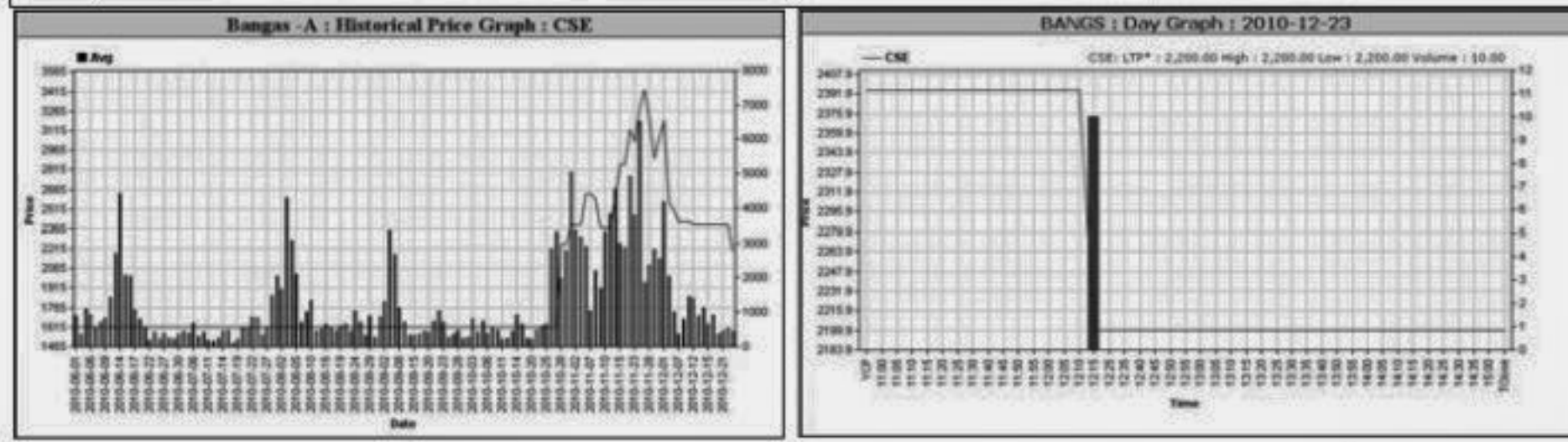
Capital Losers

Table of Capital Losers from Dhaka Stock Exchange with columns: Company, Price Chn. (%), Price Scale, Turnover, BookV.



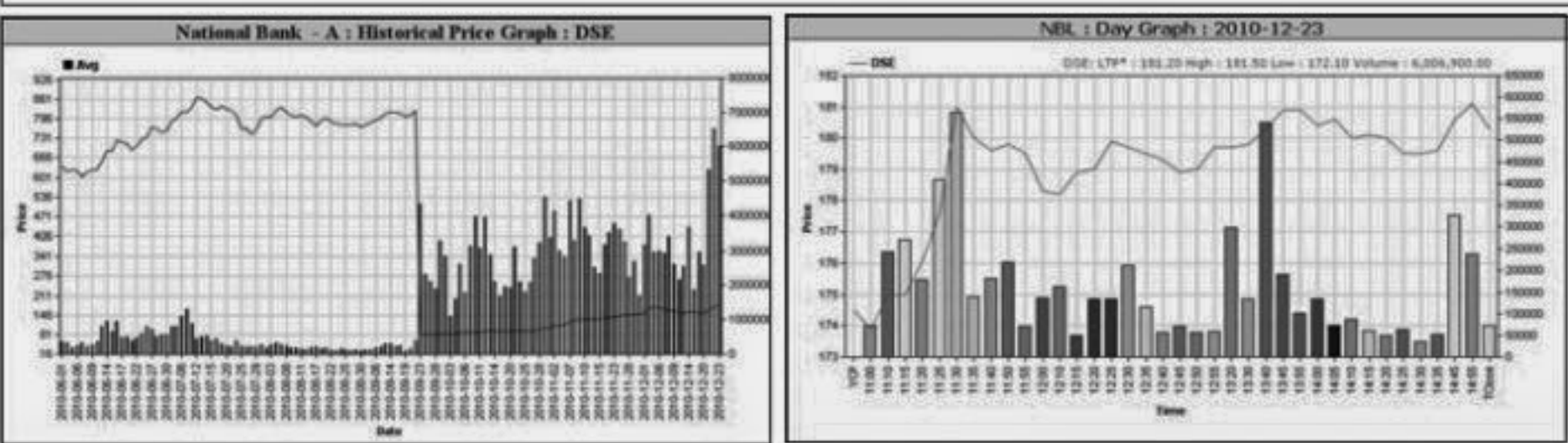
Chittagong Stock Exchange

Table of Capital Losers from Chittagong Stock Exchange with columns: Company, Price Chn. (%), Price Scale, Turnover, BookV.



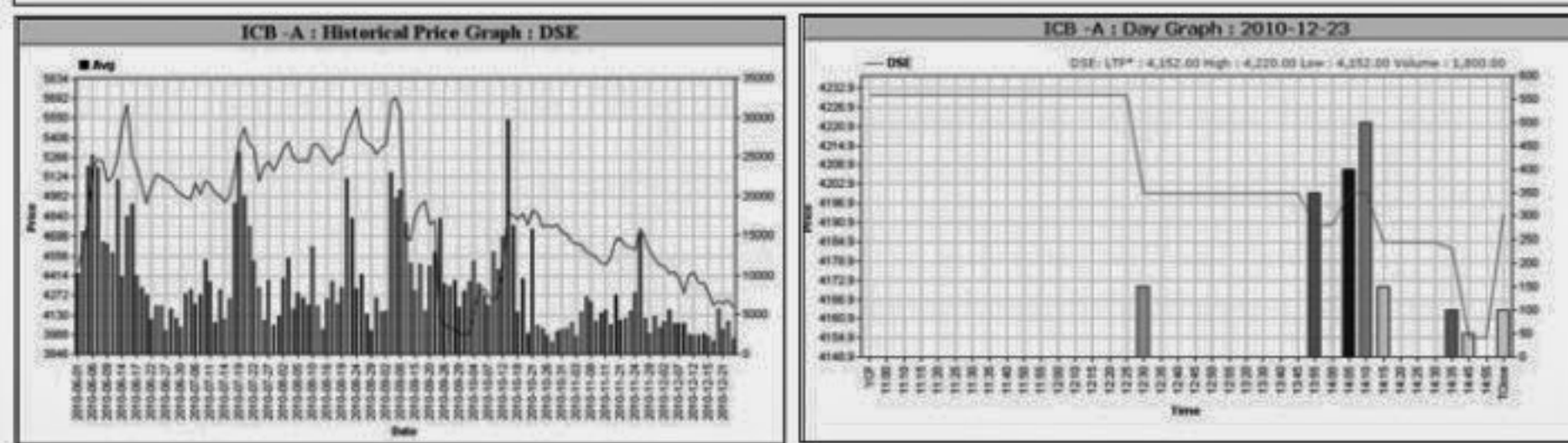
Turnover Leaders

Table of Turnover Leaders from Dhaka Stock Exchange with columns: Company, Vol., Value, % of Total, Price Scale, C. Pts, BookV.



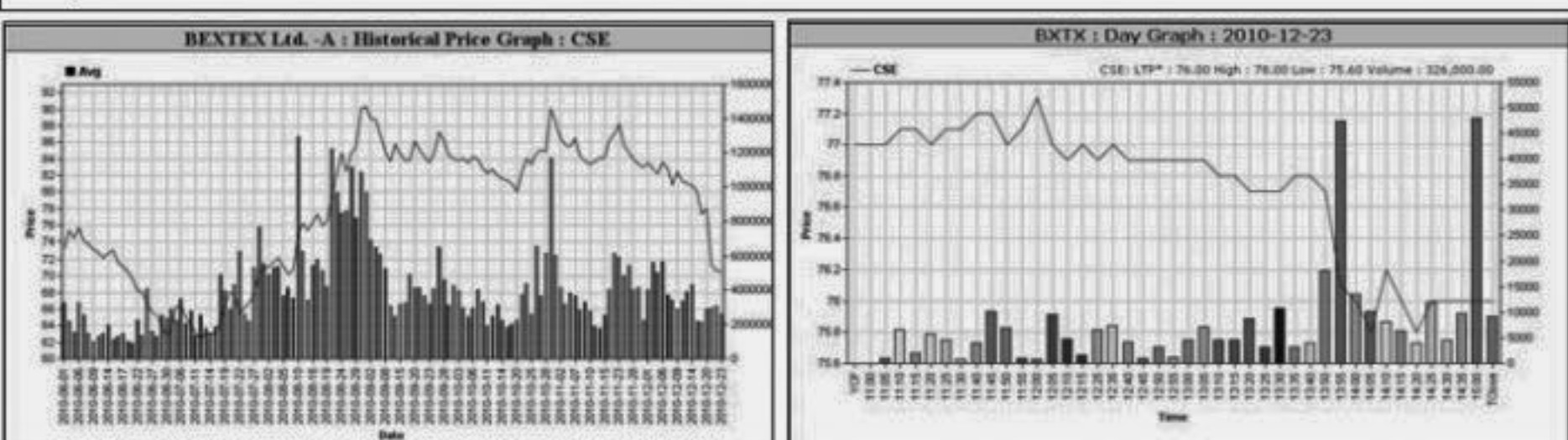
Market Cap. Leader

Table of Market Cap. Leader from Dhaka Stock Exchange with columns: Company, Market Cap., % of Total, Average Price, Price Scale, BookV.



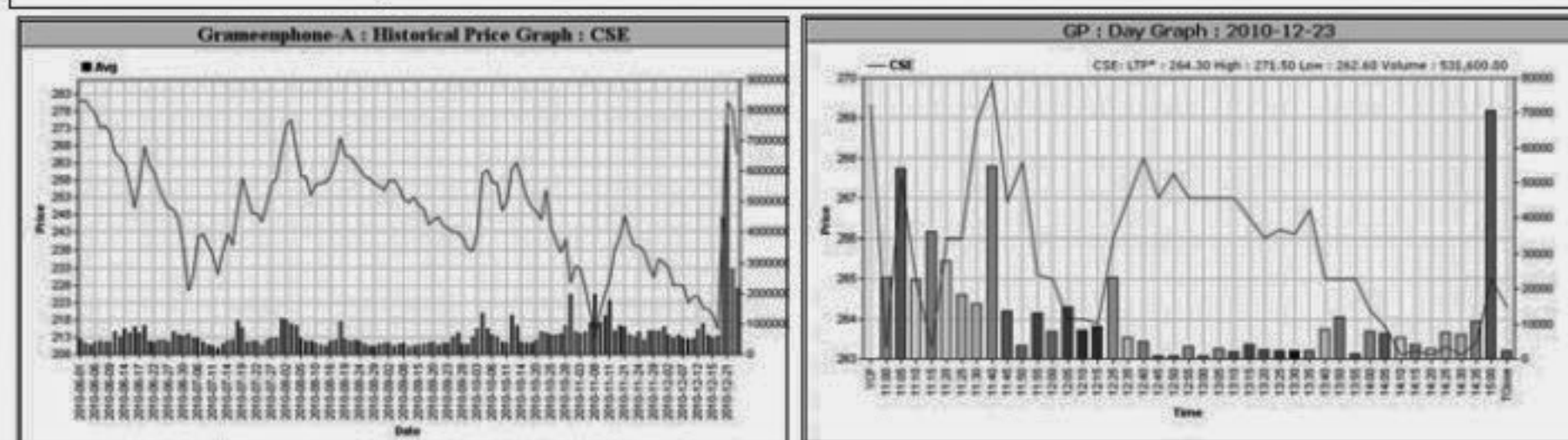
Chittagong Stock Exchange

Table of Turnover Leaders from Chittagong Stock Exchange with columns: Company, Vol., Value, % of Total, Price Scale, C. Pts, BookV.



Chittagong Stock Exchange

Table of Market Cap. Leader from Chittagong Stock Exchange with columns: Company, Market Cap., % of Total, Average Price, Price Scale, BookV.



When to buy or sell

Investors follow many calculations of corporate performance when deciding if a stock is undervalued or overvalued. These range from the simple price-earnings ratio, or P/E, to far more technical ways of attempting to discern whether a stock is trending up or down. Here are some of the most common.



Notes: Capital Gainer / Loser tables are prepared on the basis of the close price change of the traded issues. "Close" or "C.Price" or "D Clo." is the Closing Price of the day. "Chn %" indicates the price difference in percentage. "Avg" prices indicate weighted average prices of all transactions of the day. "DayHi"/"D Hi" and "DayLo"/"D Lo" indicate the highest and lowest transacted price of the day. "Yr.Hi" and Yr. Lo" indicate the highest and lowest transacted price last one running year, everyday the range moves by one. "P Day" Previous Day. EPS is based on available latest audited accounts of the companies. EPS & Book value per share are diluted at bookclosing date whenever it is applicable. Only the positive earning companies are considered in calculating the PER and EPS of the Sectors and Stock Exchanges.