

Capital Market Highlights:
December 15, 2010

INDEX

	All Share	DSE General	DSE 20
DSE	6807.15313 (-1.74%)	8206.17226 (-1.78%)	4885.13047 (-1.65%)
	All Share	CSE CSCX	CSE 30
CSE	23132.3850 (-1.61%)	20262.7364 (-2.02%)	14948.3373 (-1.61%)

Turnover

DSE: 18.44% Tk 12699m
CSE: 18.14% Tk 13959m
TOTAL: 15,211

Market Cap.

DSE: 1.63% Tk 2935.4b
CSE: 5.38% Tk 2669.2b

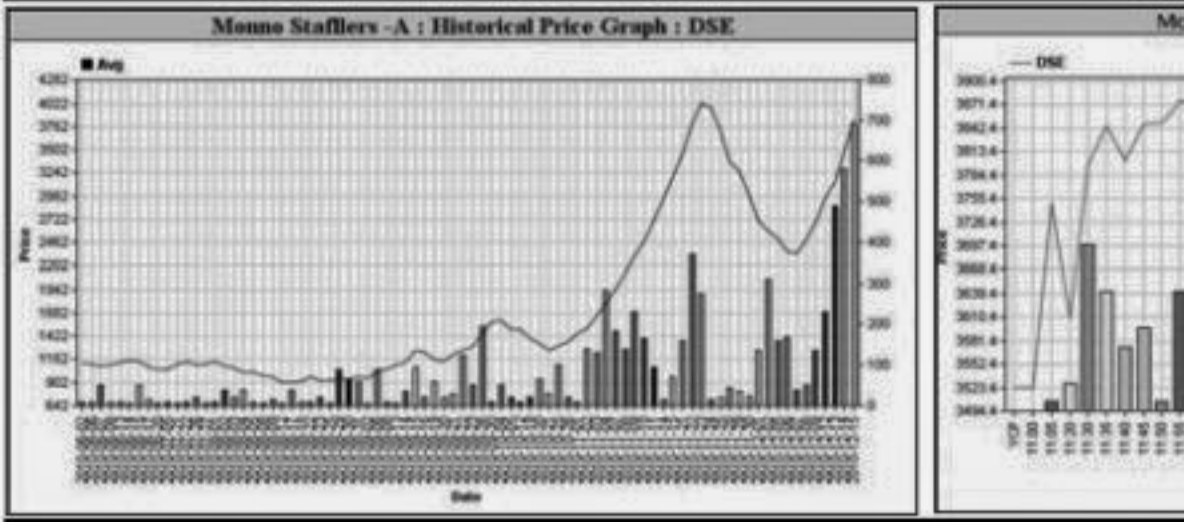
DSE General Index

CSCX

Capital Gainers

Dhaka Stock Exchange

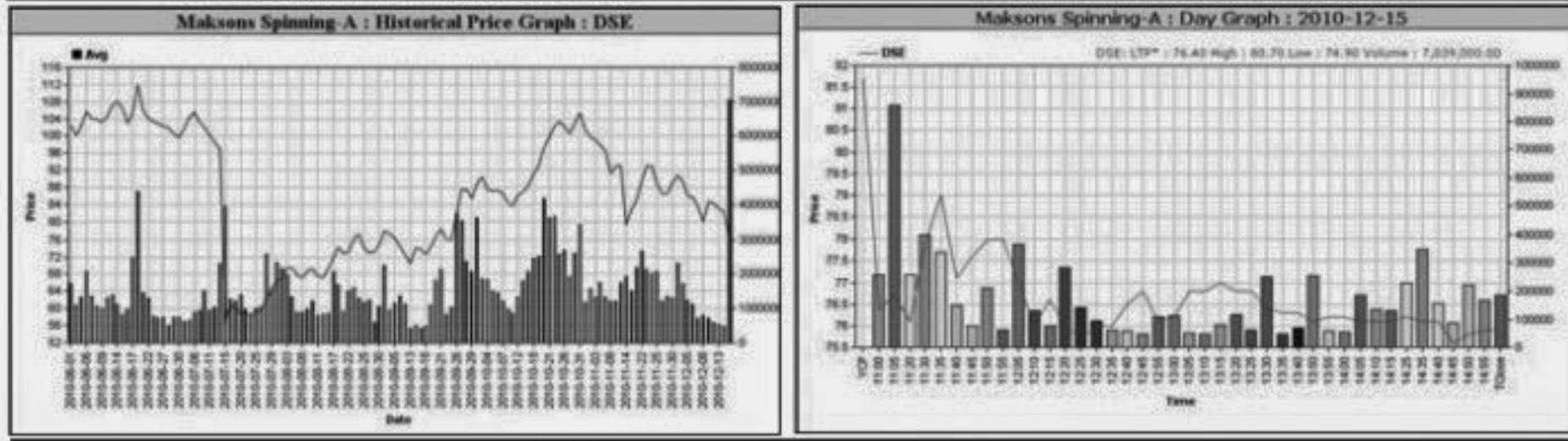
Company	Price Chn. (%)		Price Scale					Turnover				BookV				
	Close	Avg.	Avg.	DayHi	DayLo	Yr Hi	YrLo	M.Tk	Per S	EPS	PE	M.Tk	Per S	EPS	PE	
Monno Staffers -A	10.00	10.20	3,841.17	3,875.75	3,875.75	6,160.00	4150.0	896.0	2.650	372.5	38.82	98.95				
Chittagong Veg-Z	8.76	9.05	2,930.74	2,932.25	2,960.00	2,850.00	3930.0	101.0	2.696	114.28	18.08	162.10				



Capital Losers

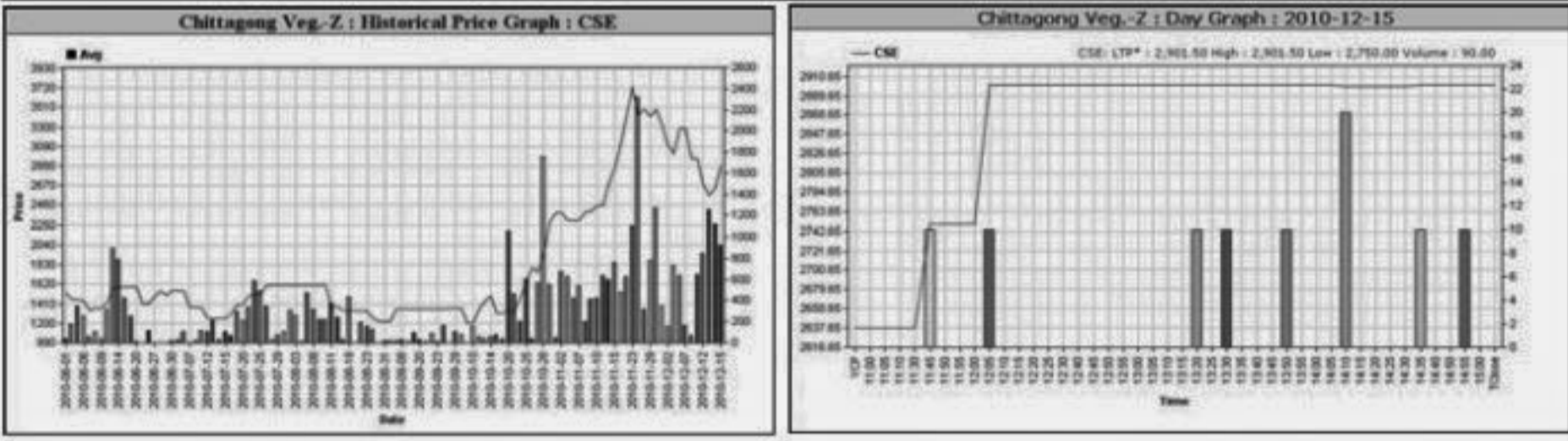
Dhaka Stock Exchange

Company	Price Chn. (%)		Price Scale					Turnover				BookV				
	Close	Avg.	Avg.	DayHi	DayLo	Yr Hi	YrLo	M.Tk	Per S	EPS	PE	M.Tk	Per S	EPS	PE	
Maksons Spinning-A	-7.10	-7.13	76.60	75.90	80.70	74.90	117.5	53.0	539.259	20.78	4.06	18.87				
BSC Z	-5.63	-5.63	3162.00	3162.00	3164.00	3160.00	5350.0	2702.0	0.032	1014.3	66.71	47.40				



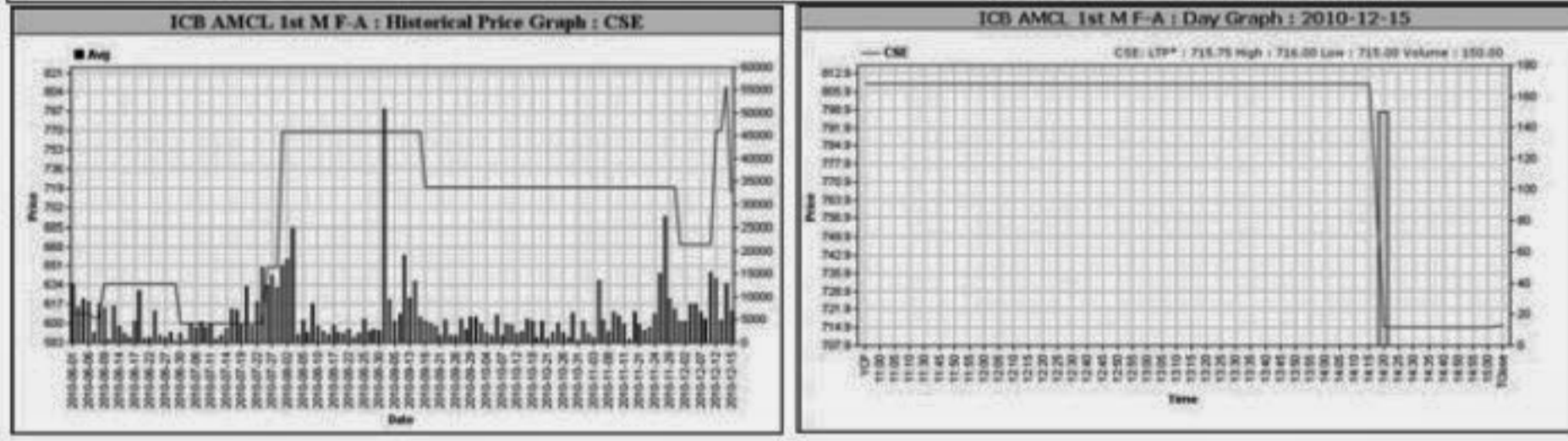
Chittagong Stock Exchange

Chittagong Veg-Z	10.00	9.35	2884.33	2901.50	2901.50	2750.00	3758.0	102.3	0.260	114.28	18.08	159.53				
Progressive Life-A	5.77	5.77	3688.33	3688.25	3750.00	3565.00	3875.0	1589.8	1.107	253.7	12.36	298.41				



Chittagong Stock Exchange

ICB AMCL 1st M F-A	-11.53	-11.54	715.67	715.75	716.00	715.00	809.0	500.0	0.107	170.99	37.98	18.84				
Prime Insur -A	-7.88	-8.06	1,595.33	1,566.00	1,610.00	1,566.00	1,998.0	450.0	0.239	119.83	23.9	66.75				



Key Features - December 15, 10

Indicators	DSE	CSE	TOTAL
Turnover (Million Taka)	12,699.43	1,259.71	13,959.14
Turnover (Volume)	119,508,057	13,628,691	133,136,748
No. of Contract	206,477	34,249	240,726
Traded Issues	244	188	244
Issue Gain (Avg. Price Basis)	42	32	42
Issue Loss (Avg. Price Basis)	202	155	202
Unchanged Issue (Avg. Price Basis)	-	1	-
Market Cap. Equity (Billion Tk.)	2,935.35	2,669.21	2,935.35
Market Cap. Equity (Billion US\$)	42.85	38.97	42.85

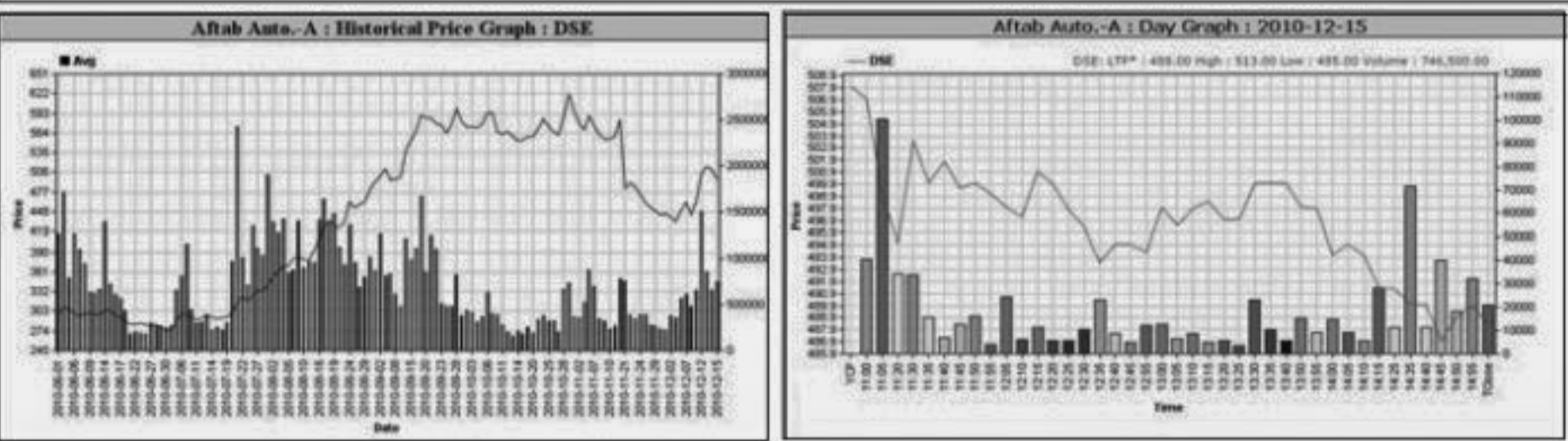
Combined Turnover Leaders

Company	Volume (Share)	Value (M. Taka)	%of Total	Average Price
Maksons Spinning-A	8122750	621.66	4.45	76.53
UCBL - A	1817758	429.62	3.08	236.35
AB Bank - A	280244	420.51	3.01	1500.5
Aftab Auto-A	825710	409.63	2.93	496.10
BEXIMCO Ltd. -A	1099132	349.38	2.50	317.87
Shinepukur Ceramics-A	2869521	332.50	2.38	115.87
National Bank - A	1859550	294.84	2.32	158.56
Titas Gas TDCLA	273450	277.92	2.19	1016.43
Brac Bank - A	320962	252.73	1.99	78.44
Prime Bank-A	311430	244.99	1.93	786.66
Southeast Bank-A	443700	242.81	1.91	547.25
People's Leasing-A	713110	211.87	1.67	299.12
Bay Leasing-A	72475	209.58	1.65	2891.59
Malek Spinning-N	1832000	199.28	1.57	108.78
Shahjalal Islami -A	2707507	199.77	1.57	72.56
LankaBangla Fin. -A	359190	186.81	1.47	520.09
Uttara Bank - A	112421	182.95	1.44	1627.43
BEXTEX Ltd. -A	2197315	175.78	1.38	79.95
UNITED AIR-N	231150	158.674	1.26	690.78
Trust Bank 1st MF-A	8836000	148.415	1.17	16.80

Turnover Leaders

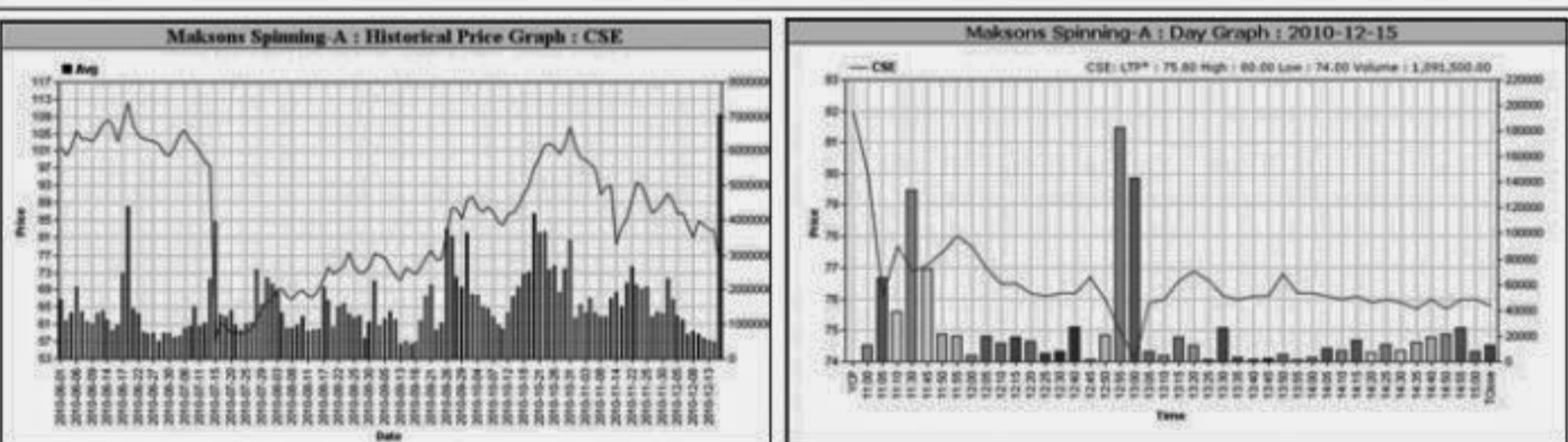
Dhaka Stock Exchange

Company	Vol. Share	Value (M.Tk.)	% of Total	Price Scale					C. Price BookV			
				Avg.	Close	DayHi	DayLo	Chn%	Per S	EPS	PE	
Maksons Spinning-A	7039750	539.259	4.25	2600.00	76.60	75.90	80.70	74.90	-7.10	20.78	4.06	18.87
Aftab Auto-A	746540	370.396	2.92	2000.00	496.15	488.50	513.00	485.00	-3.84	55.51	15.08	32.90



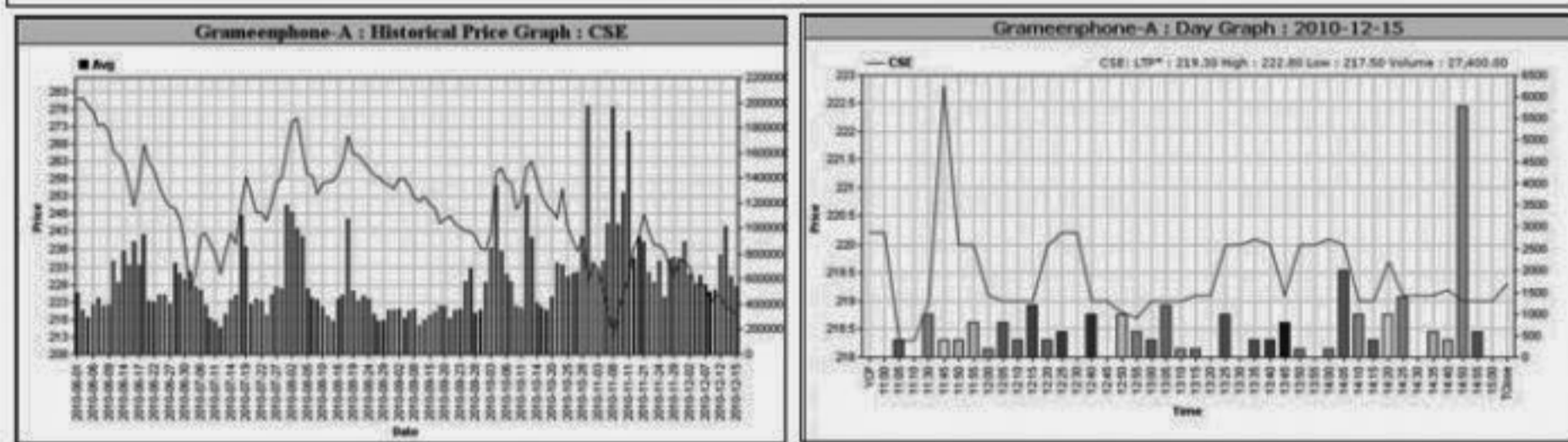
Chittagong Stock Exchange

Maksons Spinning-A	1083000	82.404	6.54	1900.00	76.09	75.80	80.00	74.00	-7.56	20.78	4.06	18.74
UCBL - A	344220	81.297	6.45	3300.00	236.18	234.50	243.50	233.10	-1.22	19.61	3.21	73.58
AB Bank - A	48305	72.677	5.77	530	1504.54	1488.00	1535.00	1485.00	-2.43	298.68	104.91	14.34



Chittagong Stock Exchange

Grameenphone-A	296.283	11.10	219.42	-0.82	221.23	222.8	217.5	219.3	-0.41	33.64	12.08	18.16
ICB - A	116.047	4.35	4,641.88	0.00	4641.88	0	0	0	0	230	68.18	68.08
Titas Gas TDCLA	76.909	2.88	1,017.94	-2.20	1040.81	1030	1005	1009.5	-1.92	200.15	60.88	16.72



Sectoral Turnover Summary

Sector	DSE		CSE		Total	
	Mill. (Tk.)	%	Mill. Tk.	%		
Bank	3982.29	31.36	477.91	37.94	4460.20	31.95
NBFI	1285.80	10.12	79.62	6.32	1365.42	9.78
Investment	1220.07	9.61	119.81	9.51	1339.88	9.60
Engineering	836.08	6.58	114.18	9.06	950.26	6.81
Food & Allied	230.75	1.82	7.57	0.60	238.31	1.71
Fuel & Power	778.41	6.13	53.02	4.21	831.43	5.96
Jute	48.73	0.38			48.73	0.38
Textile	1389.58	10.94	156.41	1.79	1546.00	11.05
Pharma & Chemical	395.15	3.11	22.51	0.19	417.66	2.99
Paper & Packaging	4.36	0.03	2.30	0.37	6.67	0.05
Service	84.20	0.66	28.99	0.19	113.19	0.81
Leather	83.33	0.66	2.34	0.18	85.67	0.61
Ceramic	406.60	3.20	22.48	1.82	429.08	3.07
Cement	193.59	1.52	22.90	0.31	216.49	1.55
Information Technology	42.11	0.33	3.93	0.56	46.04	0.33
General Insurance	677.27	5.33	70.03	1.01	747.31	5.35
Life Insurance	418.52	3.30	12.68	0.48	431.20	3.09
Telecom	117.92	0.93	6.01	1.29	123.93	0.89
Travel & Leisure	159.67	1.26	16.30	3.21	175.97	1.26
Miscellaneous	341.50	2.69	40.44	0.02	381.93	2.74
Debtenture	3.50	0.03	0.20	0.00	3.70	0.03

Sectoral P/E & EPS

Sector	P/E		EPS(%)	
	DSE	CSE	DSE	CSE
Bank	23.42	23.44	37.81	37.81
NBFI	56.55	56.52	44.55	45.23
Investment	46.60	49.66	35.57	35.57
Engineering	44.15	46.14	48.44	45.49
Food & Allied	26.09	25.58	113.38	125.04
Fuel & Power	23.84	23.72	52.08	52.08
Textile	65.11	64.04	17.91	17.92
Pharma. & Chemical	38.05	37.52	67.89	58.54
Paper & Printing	80.35	83.80	8.48	9.01
Service	46.40	46.74	35.68	35.68
Leather	22.26	22.11	86.73	104.80
Ceramic	106.98	107.38	13.52	13.52
Cement	34.65	34.63	30.22	30.22
IT	35.25	35.11	13.69	13.69
General Insurance	61.36	58.79	24.35	25.88
Life Insurance	60.51	57.81	96.43	96.43
Telecom	18.15	18.16	120.80	120.80
Travel & Leisure	115.44	326.81	5.14	2.11
Miscellaneous	17.95	18.38	154.24	145.29
Stock Exchanges	29.62	29.41	45.68	45.48

When to buy or sell

Investors follow many calculations of corporate performance when deciding if a stock is undervalued or overvalued. These range from the simple price-earnings ratio, or P/E, to far more technical ways of attempting to discern whether a stock is trending up or down. Here are some of the most common.

RSI (Relative Strength Index): A technical momentum indicator that compares the size of recent gains to recent losses, in an attempt to determine overbought and oversold conditions of an asset. Stocks with more or strong gains have a higher RSI than stocks that had more or stronger losses. **SMA (Simple Moving Average):** A simple, or arithmetic, moving average is the average stock price over a certain period of time. It adds up the closing price of the security for a given period and then divides the total by the number of intervals. Short-term averages respond quickly to changes in the price of the stock, so appear less steady, while long-term averages are slow to react. **EMA (Exponential Moving Average):** A type of moving average that is similar to a simple moving average, except that more weight is given to the latest data. The exponential moving average is also known as "exponentially weighted moving average". **Bollinger Band:** A band that provides a relative definition of high and low, it was developed by famous technical trader John Bollinger. By definition, prices are high at the upper band and low at the lower band. The band usually plots two standard deviations away from a simple moving average. Because the standard deviation is a measure of volatility, the bands adjust themselves to market conditions. When the markets become volatile, the bands widen (move further away from the average); during less volatile periods, the bands contract. The closer the prices move to the upper band, the more overbought the market, and the closer the prices move to the lower band, the more oversold the market. **MACD (Moving Average Convergence Divergence):** A trend-following momentum indicator that shows the relationship between two moving averages of prices. It is used to spot changes in the strength, direction, momentum, and duration of a trend in a stock's price. **Divergence:** This happens when a security's price diverges from the MACD. It signals the end of the current trend.



Notes: Capital Gainer / Loser tables are prepared on the basis of the close price change of the traded issues. "Close" or "C.Price" or "D Clo" is the Closing Price of the day. "Chn%" indicates the price difference in percentage. "Avg" prices indicate weighted average prices of all transactions of the day. "DayHi"/"D Hi" and "DayLo"/"D Lo" indicate the highest and lowest transacted price last one day, respectively. "Yr Hi" and "Yr Lo" indicate the highest and lowest transacted price last one year. "Per S" and "Vol." indicate the average price and volume of the companies. EPS & Book value per share are diluted at bookclosing date whenever it is applicable. Only the positive earning companies are considered in calculating the PER and EPS of the Sectors and Stock Exchanges.

Prepared exclusively for Daily Star by Business Information Automation Service Line (BIASL) on the basis of information collected from daily stock quotations and audited reports of the listed companies. High level of caution has been taken to collect and present the above information and data. The publisher will not take any responsibility if any body uses this information and data for his/her investment decision. For any query please email to biasl@bd-online.com or call 01552153562 or go to www.biasl.net