

# DCC to work on much delayed modern slaughterhouse

SHAHINAZ PARVEEN

Dhaka City Corporation (DCC) has decided to start the preliminary work of a modern slaughterhouse at Gabtoli -- a project that has been delayed for long.

The approval of the proposal is yet to be approved by the Executive Committee of the National Economic Council (ECNEC) and the proposal is still at the planning commission, sources at DCC told Star

City adding that the DCC intends to complete the project with its own funding if the project is not approved by the ECNEC.

We are planning to develop the land beside the Gabtoli cattle market and erect boundary walls around it by this fiscal year, said a high official of DCC. "It will take about Tk 2 crore.

The work will be completed in phases if necessary," he added. The DCC, with the approval

of the government, will also consider inviting private financing for the construction of the slaughterhouse.

In 1996, DCC took the initiative to build four modern slaughterhouses in the city -- two at Gabtoli, on a total of four acres of land, and one each at Uttara and Jatrabari, on one acre of land each.

The Tk 150 crore-venture could not be implemented in the last ten years as the author-

ities failed to allocate the necessary funds.

The DCC then revised the plan as per the directive of the Ministry of Local Government and Rural Development and decided to construct only one model slaughterhouse at Gabtoli instead with internal funding of Tk 25 crore.

In the revised plan, the corporation proposed to set up a model slaughterhouse at Gabtoli on 2.58 acres of land.

The facility is to be equipped with modern slaughtering machinery along with a meat processing plant, animal quarantine units, by-product processing sheds, storage and wholesale shops for animal hide, car parking, cold storage and a cattle market.

The slaughterhouse will have the capacity to slaughter and process around 200 cows and 300 goats every day.

Gabtoli has been selected as the site for the model slaughterhouse since the largest cattle market in the city is situated in the area where around 1,600 cattle are traded daily.

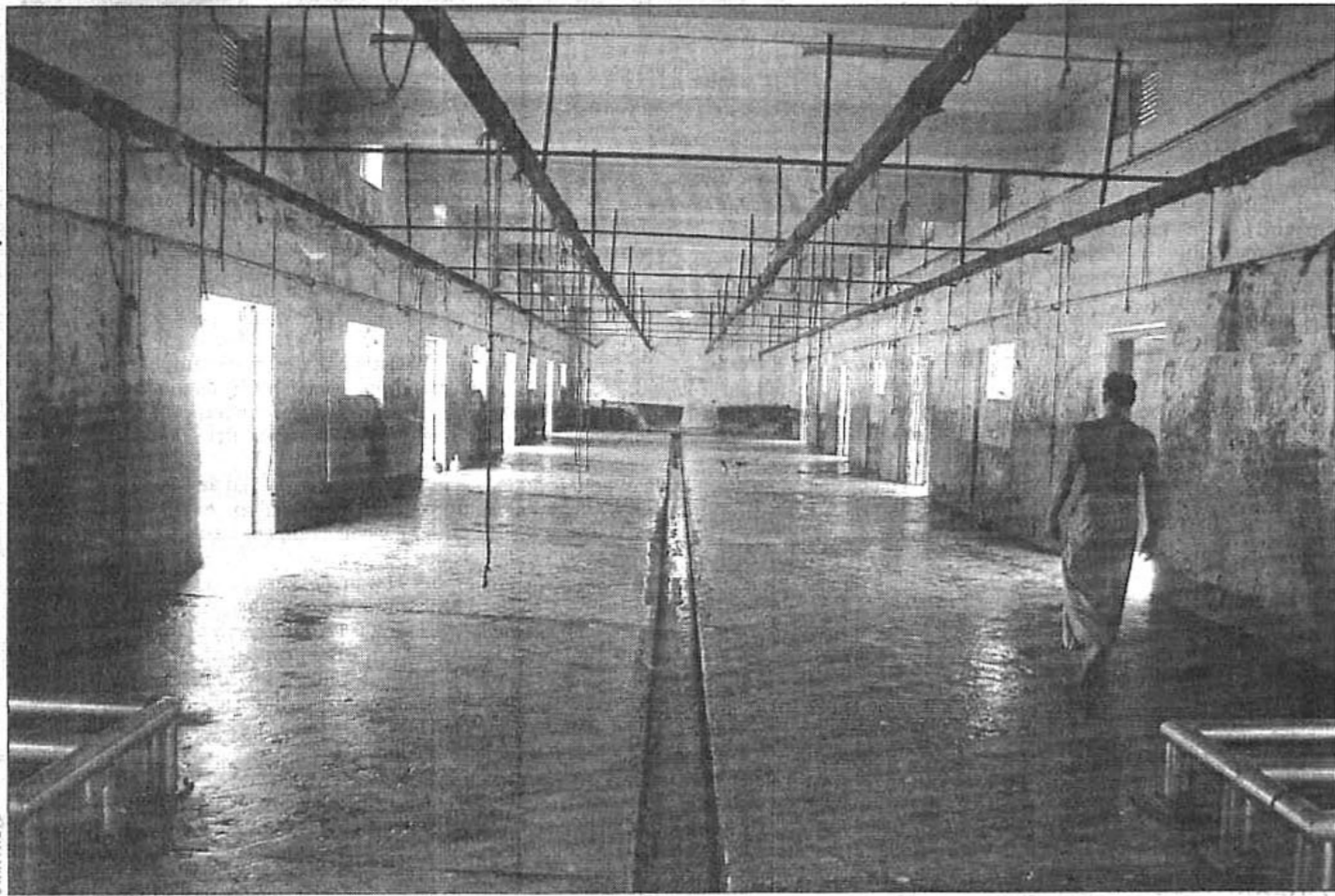
Dr Azmat Ali, veterinary officer of DCC, said, "The current practice of slaughtering and processing [animals] in the city severely infests meat with germs and other unwanted elements."

"The unhygienic slaughtering practices in all the major conventional slaughterhouses and kitchen markets is also responsible for serious environmental pollution," he added.

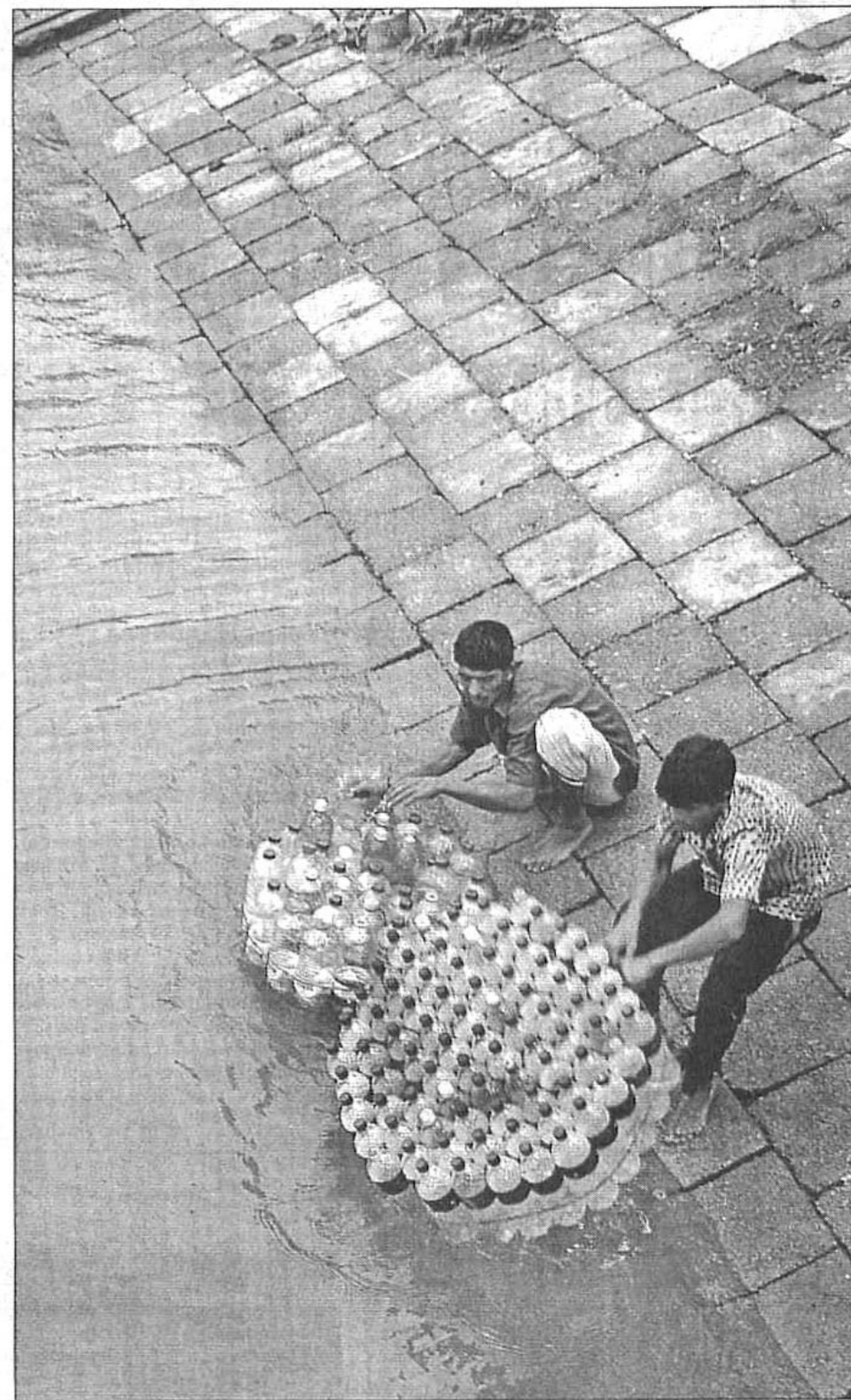
"The modern slaughterhouse will help improve the quality of the meat, making it germ-free for the local market as well as encourage its export," Dr Azmat said.

Around 5,000 to 6,000 cows and goats are slaughtered in the city every day.

At present, there are five old-fashioned slaughterhouses in the city. Two of them are large slaughterhouses -- at Kaptanbazar and Hazaribagh, and three are smaller -- at Mohammadpur, Mirpur 1 and Mirpur 11. The authorities have recently shut down the one at Gulshan.



An old-fashioned slaughterhouse at Hazaribagh.



Street children washing bottles of mineral water in the polluted Buriganga at Sadarghat Launch Terminal. They collect the discarded bottles from here and there and fill them with Wassa water to sell those to the launch passengers.

## Hatirjheel-Begunbari Project

FROM PAGE 17  
According to high officials of Bangladesh Railway, the government has cancelled plot allotments in favour of BTMA and International Arbitration Centre. But it is yet to cancel allotments to FBCCI and Hotel Hilton.

While two former prime ministers -- Khaleda Zia and Sheikh Hasina -- were involved in creation of the 'unauthorised' BGMEA building, the incumbent caretaker government too seems irrevocable on what actions to take against it.

The then prime minister Sheikh Hasina laid the foundation plaque of the 15-storey high-rise on November 28, 1998 while another former premier Khaleda Zia inaugurated the complete building on October 8, 2006.

Chairman of Rajdhani Unnayan Karttripakkha (Rajuk) KAM Haroon said, "The BGMEA building is illegal, as it has not obtained design approval as of today. We will action as per recommendations of the

Buet expert team."

The government is thinking on what action should be taken regarding BGMEA building, said Public Works Adviser Barrister Mainul Hossain on August 2, replying to a question at a press briefing held at the secretariat on the Supreme Court verdict in favour of demolishing unauthorised height of the 22-storey Rangs Bhaban.

Mubasshar Hussain, president of the Institute of Architects Bangladesh (IAB) said it is the duty of Prime Minister's Office (now Chief Adviser's Office) to check legality and authenticity of an establishment before the PM or chief adviser inaugurates it.

"The very presence of the country's chief executive at a site of illegal establishment creates not only embarrassment among the government agencies and officials concerned but also a false impression of authenticity among the general public," said Hussain, who is also chairman-elect (2007-2009)

of Architecture Regional Council Asia.

The same team of Prof Mujibur Rahman carried out a similar survey in 2004 (final report submitted in 2005) in the Begunbari canal and entire stretch of the Hatirjheel for a proposed 13-acre development scheme of Rajuk.

The Rajuk board at a meeting on 14 July 2003 instructed BGMEA to consult with the Buet expert team and obtain clearance for its 15-storey building, which BGMEA didn't.

Prof Mujibur Rahman said, "BGMEA did never turn up for any consultation with us."

Prof Rahman earlier said a structure like BGMEA building is 'not compatible' with the idea of developing and conserving the Begunbari canal as a sewer facility.

"This time, we will be all the more focused on ensuring environmental and drainage aspects of the Begunbari canal," said Prof Rahman.

Responding to BGMEA's claim that Buet team kept the BGMEA building 'fit-in' in the earlier survey, Prof Rahman said, "In fact, we just identified the building in our topographic survey as it was already in place as an existing object."

BGMEA President Anwar-ul-Alam Chowdhury (Parvez) said that they had started construction before obtaining design approval thinking they would certainly get the approval. "But I agree that rules-wise it has been an unauthorised work. We should have constructed the building only after having obtained the approval."

Regarding demolition and removal of various obstructions in the Begunbari canal and Hatirjheel, Chief Adviser Fakhruddin Ahmed said at the Ecneec meeting that the issue would be resolved as per the existing laws, meeting sources said.

## Gold market gloomy for price hike

FROM PAGE 17

"Although I came here to buy a gold ring for my friend's birthday, now it seems as if the prices have gone beyond my purchase capacity," she added.

The recent price increase came into effect after Bangladesh Jewellery Makers and Importers' Association (BJMIA) reviewed the gold price on September 27.

According to the new rate, each bhoori of 18-carat gold -- which was selling at Tk 17,400 a few weeks ago -- has now been fixed at Tk 18,080. (24-carat gold is considered to be pure gold; 12-carat being 50 percent pure)

Each bhoori of 21-carat gold is now being sold at Tk 20,237. The previous price of it was Tk 19,715.

A bhoori of 22-carat gold has jumped from Tk 20,646 to Tk 21,228.

People mostly from the lower and lower-middle income groups now find themselves unable to afford gold ornaments these days.

"The way jewelry prices are rising, ornaments made of inexpensive materials are gaining more popularity these days," said Golam Hussain of Venus Jewellers in Mouchak Market.

Baitul Mukarram jewelry market, a market that is usually found crammed with customers during festivals, was found literally deserted when this correspondent visited it before the Eid-ul-Fitr.

Jewellers, however, were optimistic that sales would pick up during the coming months of Aghrahan and Falgun, which are considered as the season of wedding in our country.

Apart from the price hike, a

number of jewellers in Baitul Mukarram Market also blamed the market authorities for the decline in sales.

"The already inadequate parking facilities in the (Baitul Mukarram) market are virtually taken over by street vendors and hustlers. How can you expect that the affluent customers would come here without being able to park their cars?" said Kazi Nurul Huq of Venus Jewellers.

A number of jewellers pointed out another reason for the decline in gold sales.

An official of Apan Jewellers said, "With more and more muggings and robberies in the city, people are more worried about their safety these days. They are really scared to carry expensive items and large amounts of cash on them."

"People do not bother to make any lavish purchase lately

to deter the crooks or even the 'authorities'," he added.

Since the price of gold in Bangladesh is lower than that in neighbouring countries, huge amounts of gold are being smuggled out to India, Pakistan and Myanmar, according to sources at Bangladesh Jewellery Makers' and Exporters' Association (BJMEA).

There are large numbers of shady businesses operating in our neighbouring countries where gold, in place of dollar or other currencies, are being used as a medium of trading. That is one of the main reasons for gold smuggling, said an official from the BJMEA accounts department.

The price hike of gold, although detrimental to the market, would sap the smugglers, he added.

## health, bus services, airlines & train timing

### HOSPITALS & CLINICS

**Square Hospitals Ltd**  
Emergency: 8144466, 8144477,  
8144488, 01713377773,  
01714477774, 01713377775. Fax:  
880-2-9118921  
Telephone: 8141522, 8142431,  
8144400, 8142333, 8159457,  
8129334, 01713141447.

**Ahsania Mission Cancer & General Hospital**  
9008919, 8051618

**Apollo Hospitals Dhaka**  
9891680-4, 01713046684/85  
Emergency no. 9896623, 0171409000

**Bangladesh Medical College & Hospital**  
9118202, 8115843

**Central Hospital**  
9680015-19

**China Bangla Hospital (JV) Ltd**  
8913674

**Dhaka Medical College Hospital**  
8626812-16

**Gana Shasthyo Kendra**  
8617208, 8617383, 8620178.

**Greenland Hospital**  
8912663

**Gulshan Mother & Child Clinic**  
8822738, 8812992

**Holy Family Hospital**  
8311721-25

**Islamic Bank Hospital**  
9333739

**Japan Bangladesh Friendship Hospital**  
8820855, 8827575

**Labaid Cardiac Hospital**  
8510793-8

**Marie Stopes Clinic**  
8821874

**Medinova Medical Services Ltd**  
8620353

**Monowara Hospital**  
8318135, 8319802

**Pangu Hospital**  
9112150, 9113041

**PG Hospital (BSMMU)**  
9614545-9, 9612550-4

**Rashmono General Hospital**  
8317606, 9557354, 8317819

**Ratan's Dental Clinic**  
9111090

**Salimullah Medical College Hospital**  
7319002-6

**Samorita Hospital Ltd**  
9131901

**Shahid Suhrawardy Hospital**  
9122560-78

**Shishu Hospital**  
8116061-2, 9119119

**United Hospital**  
8836444, 0194001234

**Probin Hospital**  
Phone: 9129814, 9141404

### BLOOD BANK

**Bangladesh Red Crescent Blood Bank**  
9116563

**Modern Clinic & Blood Center**  
9883948

**Sandhani, Dhaka Medical College**  
9668690

### BUS SERVICES

**Drooli**  
8014563

**Eagle Paribahan**  
7101504

**Green Line Paribahan**  
9339623, 9342580, 8353005

**Hanif Enterprise**  
9120116

**Keya Paribahan**  
7101894, 7101250, 9121280

**Modern Enterprise**  
9123743

**Neptune A/C Coach Service**  
7101945, 7101951, 9123092

**Shohag Paribahan (Pvt) Ltd**  
9334152, 8316766, 8126293

**Shoukhin Paribahan**  
8014397, 9001796

**Silk Line**  
7102461

**Shyamoli Paribahan**  
9333803

### AIRLINES

**lines**  
Aeroflot

9559930, 9559111, Fax: 9563787

**Air India**  
8617783, 8611929, Fax: 9670591

**Biman Bangladesh Airlines**  
8917400-19 9560151, 9559610

Airport Office: 8917400, Fax: 8913005

**British Airways**  
8815111, Fax: 8815346

**Cathay Pacific**  
9557117, Fax: 9562667

### TRAIN TIMING

**Subarna Express**

**Mahanagar Godhuli**

**Parabat Express**

**Joyantika Express**

**Upahan Express**

**Tista Express**

**Ekata Express**

**Upakul Express**

**Agnibeena Express**

Leaves Dhaka at 4:30 pm

Leaves Dhaka at 7:30 am

Leaves Dhaka at 3-15 pm

Leaves Dhaka at 11-00 pm

Leaves Dhaka at 2-30 pm

Leaves Dhaka at 12-45 pm

Leaves Dhaka at 9-45 pm

Leaves Dhaka at 7-00 am

Leaves Dhaka at 5-00 pm

Leaves Dhaka at 8-00 pm

Leaves Dhaka at 9-20 pm

**Druk Air**  
9862243, 9892862,

**Emirates**  
9892801, 9885574-75

**GMG Airlines**  
8825845-9, Airport Office:

8960404, 8915699, Fax: 8826115

**Gulf Air**  
9130123-5, Airport Office: 8914573

**Indian Airlines Ltd**  
9555915, 9557813,

**Kuwait Airways**  
9115182, 9118829

**Malaysia Airlines**  
9888211-20

Airport Office: 8916953, Fax: 9890478

**PIA**  
9349293-5, Fax: 9345300

**Singapore Airlines**  
8811504-7, 9883259

Airport Office: 8911928, Fax: 8811503

**Thal Airways**  
8314711-18, 8914343

**Virgin Atlantic Airways**  
8816324-5, Fax: 9896481

### LIBRARY & INFO-

**Libraries, Cultural and**

**Information Centers**

**Central Public Library- 8626001-4,**

**Shishu Academy- 9564128**

**Shilpakala Academy- 8614673**

**Bangla Academy- 8619550**

**Islamic Foundation- 9550280,**

**9556407**

**Nazrul Institute- 9114602,**

**Ford Foundation- 8116133**

**Alliance Francaise- 8611557**

**Information Resource Center, The**

**American Center - 8813440-4,**

**9886395-9**

**British Council- 8618867-8,**

**8618905-7**

**Community Development Library-**

**8113769, 8113604**

**Goethe Institute Int'l- Dhaka-**

**9126525-6**

**Indian Information Centre &**

**Cultural Library- 8850141-2**

**The Russian Cultural Centre-**

**9116314, 9118531, 9118314**

**Drik Photo Gallery- 9120125,**

**8112954, 8123412**

**Press Institute of Bangladesh**

**(PIB) 9330081-4**