



SENA KALYAN SANGSTHA

SENA KALYAN BHABAN (21st Floor)
195, MOTIJHEEL C/A, DHAKA-1000.
Phone : 9560051, Fax 88-02-9565820

LOCAL / INTERNATIONAL TENDER NOTICE

Sealed tenders are invited from Manufacturers / Suppliers / Indenters for supply, installation and trial run of Dry De-Stoner, Magnetic Separator, Grain Measuring & Feed Apparatus / Volumetric Measurer (Pocket type) and versatile Plansifter for 03 (three) Flour Mills of Sena Kalyan Sangstha at Chittagong.

Tender schedule will be available in the Accounts Division, Sena Kalyan Sangstha, Sena Kalyan Bhaban (21st Floor), 195, Motijheel C/A, Dhaka-1000 on payment of Tk. 500/- (five hundred) per set (Non refundable). The Earnest Money equivalent to 1% of the total quoted amount in the form of Pay Order / Demand Draft / Bank Guarantee in favour of Sena Kalyan Sangstha, Dhaka from any schedule bank of Bangladesh is to be submitted alongwith the offer. The offer will not be accepted for scrutiny / vetting without Earnest Money.

The tender will be received in the Tender Box kept in the office of the Procurement & Development Directorate, Sena Kalyan Sangstha, Sena Kalyan Bhaban (21st Floor), 195, Motijheel C/A, Dhaka-1000 up to 12-00 noon on 30 April, 2005. The tender will be opened on the same day at 12-30 PM in presence of available bidders. The authority reserves the right to accept or reject any or all tenders without assigning any reasons whatsoever.

Director
Procurement & Development
Sena Kalyan Sangstha.

Termite, Roach, Fly Problem
Please contact: **Open Always**
SAFEMAN PEST CONTROL
Tel: 886 1700, 886 1800
www.SafewayBangladesh.com

CAREER OPPORTUNITY

An International Organization needs the following for their Dhaka Office:

1. Executive Assistant to the CEO :

- MBA with 2 years' experience • Good communication skills • Computer & English proficiency

2. Secretary to the CEO :

- 4 years' experience in similar capacity • Proficient in English & Bengali • Computer proficiency

Interested applicants should drop their complete resumes with a cover letter clearly mentioning the post they are applying for on the envelope to the following address:

PO Box 4034

DBH Be a part of the Winning Team...

Delta Brac Housing Finance Corporation Ltd. (DBH), an international joint venture Financial Institution with core focus on Housing Finance, is looking for result-oriented, talented and highly ambitious candidates for the following position:

EXECUTIVE / MANAGEMENT TRAINEE - FINANCE

- Masters/Bachelor in Business Administration/Finance/Banking/Accounting. Candidate having partial fulfillment of CFA with good academic achievement will be given preference.
- 1-2 years working experience in the area of financial analysis in any reputed organization with sound knowledge of accounting and conceptual understanding of different banking products will also be given preference
- Strong interpersonal skills with good command over English and computer applications. Age not over 28 years.

The position offers a competitive remuneration and benefits package, with a rapid career growth path for outstanding performers.

Please send your resume with a recent color photograph to the Human Resources Department, Delta Brac Housing Finance Corporation Ltd., Landmark Building (9th Floor), 12-14 Gulshan North C/A, Dhaka - 1212 on or before March 31, 2005. Only short listed candidates will be invited for written test and/or interview.

অভিনন্দন
কলমে কলমে
কুয়ালিলামপুর
প্রতিযোগিতার বিজয়ীদের

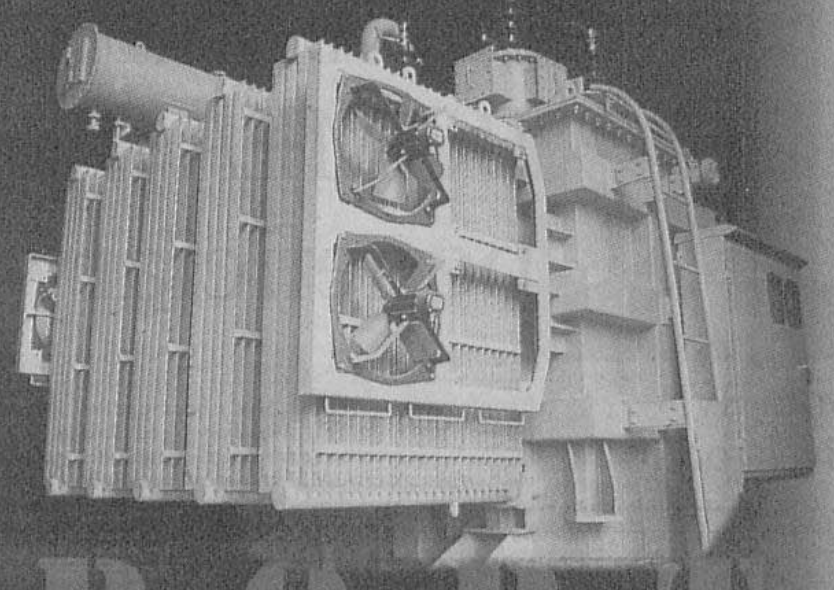
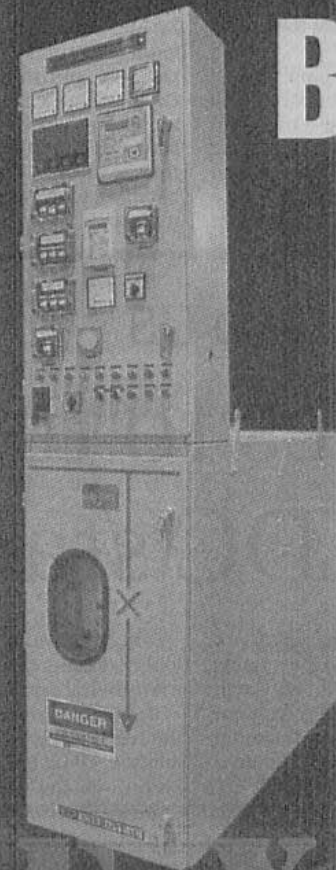


রাহিমআফরোজ-এর ৫০ বছর পূর্তিতে লুকাস কলমে কলমে কুয়ালিলামপুর প্রতিযোগিতার নোভোপাবান বিজয়ীদের জানিই প্রাথমিক অভিনন্দন। প্রথম মাসের মধ্যে দ্বিতীয় মাসেও ৫০ জন ভাগ্যবান ক্রেতা জিতে নিলেন ঢাকা-কুয়ালিলামপুর-ঢাকা ভ্রমণের সুযোগ, ইলেকট্রিক ভেহিকেল, রাহিমআফরোজ আই.পি.এস., রিসিট ওয়াচ, ডিনার সেট, মাইক্রোওয়েভ ওভেন, আগোরা গিফট ভাউচারসহ অসংখ্য উপহার। আমরা সকল ক্রেতা সাধারণকে কলমে কলমে কুয়ালিলামপুর প্রতিযোগিতায় উৎসাহিত ও ব্যাপক সাড়া প্রদানের জন্য আবারো জানিই আন্তরিক কৃতজ্ঞতা।

RAHIMAFROOZ

Lucas
One name you can trust

first time from
BANGLADESH



SWITCHGEAR & TRANSFORMER EXPORTED to
INDIA
and will be exported to world market soon

ENERGY PAC Engineering Ltd.

Jiban Bima Tower, 11th floor, 10 Dilkusha C/A, Dhaka, Bangladesh.
Phone : (880-2) 9561883 (5 lines hunting), Fax : (880-2) 9563728
E-mail: eei@vincit.net, eedmn@dhaka.net

www.energypac.com

Spring Festival

Be with us
to celebrate this spring time

Connection + Handset

	Nokia 3310	Nokia 3315	Motorola C200	TCL Q510	Alcatel OTT53	Sony Ericsson T200	X 150	DBTel 2048	Maxon MX C30	TCL 3188M	Panasonic A100	Alcatel OT320	Sony Ericsson T105
EASY Pre-Paid	Tk. 3,800	Tk. 3,800	Tk. 4,000	Tk. 4,100	Tk. 4,100	Tk. 4,200	Tk. 4,500	Tk. 4,650	Tk. 4,800	Tk. 5,000	Tk. 5,300	Tk. 5,700	Tk. 5,800
GP-National	Tk. 4,725	Tk. 4,725	Tk. 4,925	Tk. 5,025	Tk. 5,025	Tk. 5,125	Tk. 5,425	Tk. 5,575	Tk. 5,725	Tk. 5,925	Tk. 6,225	Tk. 6,625	Tk. 6,725
anytime 300	Tk. 5,875	Tk. 5,875	Tk. 6,075	Tk. 6,175	Tk. 6,175	Tk. 6,275	Tk. 6,575	Tk. 6,725	Tk. 6,875	Tk. 7,075	Tk. 7,375	Tk. 7,775	Tk. 7,875
anytime 450	Tk. 6,225	Tk. 6,225	Tk. 6,425	Tk. 6,525	Tk. 6,525	Tk. 6,625	Tk. 6,925	Tk. 7,075	Tk. 7,225	Tk. 7,425	Tk. 7,725	Tk. 8,125	Tk. 8,225
GP-Regular	Tk. 7,095	Tk. 7,095	Tk. 7,295	Tk. 7,395	Tk. 7,395	Tk. 7,495	Tk. 7,795	Tk. 7,945	Tk. 8,095	Tk. 8,295	Tk. 8,595	Tk. 8,995	Tk. 9,095
EASY Gold	Tk. 7,495	Tk. 7,495	Tk. 7,695	Tk. 7,795	Tk. 7,795	Tk. 7,895	Tk. 8,195	Tk. 8,345	Tk. 8,495	Tk. 8,695	Tk. 8,995	Tk. 9,395	Tk. 9,495

	Samsung SGH R220	Nokia 1100	Sagem MY X2	Siemens M55	Nokia 2300	Motorola C350i	Siemens C65	Sagem X 3-2	Nokia 3120	Mitsubishi M 750	Samsung X 600A	Nokia 3220	Xplore G88
EASY Pre-Paid	Tk. 6,000	Tk. 6,299	Tk. 6,550	Tk. 6,800	Tk. 7,200	Tk. 7,600	Tk. 8,250	Tk. 8,295	Tk. 8,800	Tk. 11,100	Tk. 13,300	Tk. 14,150	Tk. 23,753
GP-National	Tk. 6,925	Tk. 7,224	Tk. 7,475	Tk. 7,725	Tk. 8,125	Tk. 8,525	Tk. 9,175	Tk. 9,220	Tk. 10,725	Tk. 12,025	Tk. 14,225	Tk. 15,075	Tk. 24,678
anytime 300	Tk. 8,075	Tk. 8,374	Tk. 8,625	Tk. 8,875	Tk. 9,275	Tk. 9,675	Tk. 10,325	Tk. 10,370	Tk. 11,875	Tk. 13,175	Tk. 15,375	Tk. 16,225	Tk. 25,828
anytime 450	Tk. 8,425	Tk. 8,724	Tk. 8,975	Tk. 9,225	Tk. 9,625	Tk. 10,025	Tk. 10,675	Tk. 10,720	Tk. 12,225	Tk. 13,525	Tk. 15,725	Tk. 16,575	Tk. 26,178
GP-Regular	Tk. 9,295	Tk. 9,594	Tk. 9,845	Tk. 10,095	Tk. 10,495	Tk. 10,895	Tk. 11,545	Tk. 11,590	Tk. 13,095	Tk. 14,395	Tk. 16,595	Tk. 17,445	Tk. 27,048
EASY Gold	Tk. 9,695	Tk. 9,994	Tk. 10,245	Tk. 10,495	Tk. 10,895	Tk. 11,295	Tk. 11,945	Tk. 11,990	Tk. 13,495	Tk. 14,795	Tk. 16,995	Tk. 17,845	Tk. 27,448

- 2 copies of passport size photographs should be submitted at the time of purchase
- All prices include taxes & levies
- Post-Paid connection activation time minimum 72 hours



GrameenPhone