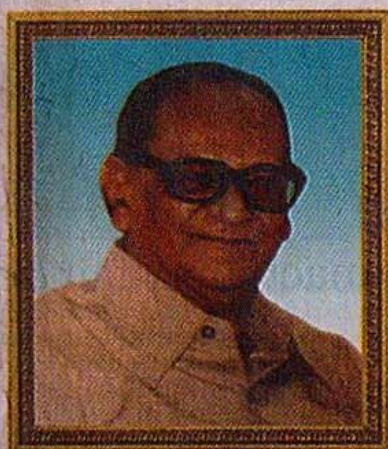
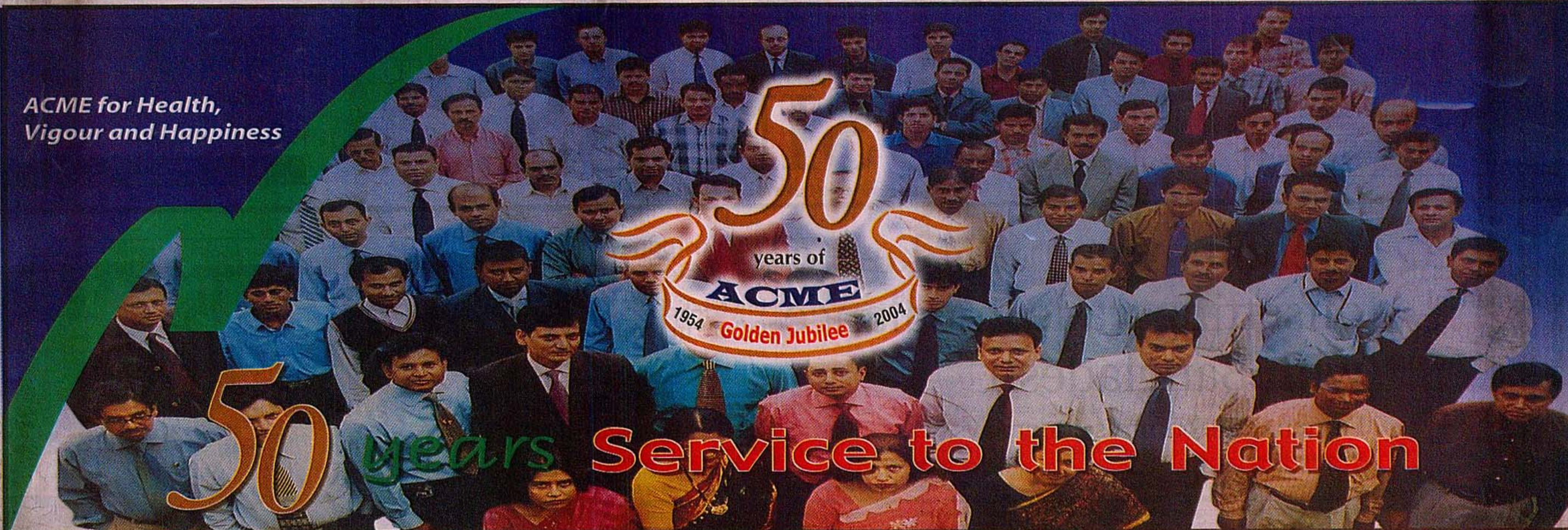


ACME for Health,
Vigour and Happiness



Late Hamidur Rahman Sinha



Late Mrs. Noorjahan Sinha

Founders
The ACME Laboratories Ltd.

Since its inception in 1954, ACME has been working relentlessly with a vision to ensure Health, Vigour and Happiness for all.

Establishment of ACME and great entrepreneurial effort of late Hamidur Rahman Sinha is a vivid example of a great mind's vision and its materialization. Post colonial Bengal was a place of great uncertainty and hardship. Industrialization facilities were meager and inadequate. One man came forward with his vision, amidst the political turmoil and utter lethargy of the then-new government. It's not an easy task to set up a highly sophisticated industry, and moreover do it without bank loans and governmental assistance. So it demanded immense effort, strong determination along with vision and dreams.

1954 was a milestone year in the history of the pharmaceutical industry. Late Hamidur Rahman Sinha might have thought it was a private entrepreneurial effort on his part, but in reality it was a resolute and brave footstep which played a part in pioneering the present pharmaceutical industry.

At the precise moment when this visionary man established the company at Narayanganj, though on a small scale, he had actually sown the seeds of today's burgeoning almost self-sufficient pharmaceutical industry. Now Bangladesh is exporting drugs to different countries of the world. Had Late Hamidur Rahman Sinha not taken such a courageous step, perhaps it would not have been possible for us to reach such heights of success.

On this occasion we also remember his beloved wife, Mrs. Noorjahan Sinha, whose sacrifice, and unconditional support was always a source of inspiration. As we celebrate ACME's 50th anniversary they are no longer with us, but their memories will forever remain in our hearts. At this auspicious moment, we pay our homage to them.

**ACME :
AN EXPEDITION TO SUCCESS**

1954 : Late Hamidur Rahman Sinha founded 'The ACME Laboratories' with limited formulations of medicines in oral and powder form.

1976 : The ACME Laboratories transformed into a private limited company.

1978 : Construction work started for large scale and modern factory building at Dhamrai not far away from Dhaka. Two new dosage forms-tablet and capsule were included in the medicaments manufactured by ACME.

1983 : At the fag end of the year, production started in a factory equipped with modern technologies and facilities. This accelerated the phenomenal rise and growth of ACME.

1992 : This year ACME produced an important dosage form- the parenterals.

1994 : It was the year of the sad demise of founder chairman Mr. Hamidur Rahman Sinha. The responsibility of the company was taken over by his worthy sons.

1995 : ACME started the global operation.

1999 : ACME achieved ISO certification.

2004 : By this time some sophisticated formulations, Dry Powder Inhaler (DPI), Metered Dose Inhaler (MDI) and Suppository had been included in the product range of ACME.



MISSION STATEMENT

Our holistic approach is to ensure Health, Vigour and Happiness for all by manufacturing of ethical drugs and medicines of the highest quality at affordable price and reaching out even to the remotest areas through proper distribution network. We view ourselves as partners with doctors, our customers, our employees and our environment.



MANUFACTURING QUALITY MEDICINE

ACME's modernized plant is located at Dhamrai. While designing and constructing the plant, proper attention was paid to the latest concepts of cross contamination, high efficacy of air circulation handling, particle free finishes, equipment layout, process flow, hygiene and safety. Special care has also been given in selecting machinery and laboratory instruments. The plant has the most sophisticated imported machinery and equipment. ACME's plant is a testimony to its basic commitment for manufacturing the highest standard of ethical drugs. ACME's stated belief that, "No compromise on quality can be made in a business that involves human lives," is the cornerstone of the company's Quality Assurance program. The Company has adopted ISO-9001 and WHO CGMP (Current Good Manufacturing Practice) Standards. ACME's Quality Assurance Department is equipped with the most modern instruments and is staffed with well-trained and qualified personnel. All procedures for testing, sampling and inspecting are clearly approved, implemented and documented. All instruments are regularly calibrated and processes, machinery and premises validated.



PERSONNEL AND HUMAN RESOURCES

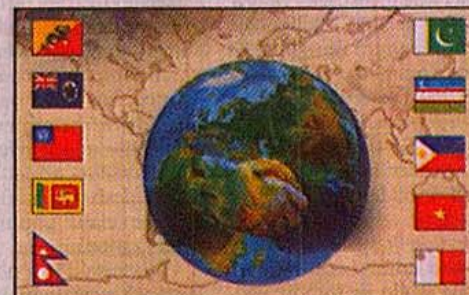
One of the fundamental aspects of our Corporate Objectives is that our people are our primary asset. It is not the machine or the technology alone, but the invaluable mix of man-machine interface that makes technology work. We believe wherever the capacity of machine is limited, human potential is unlimited. As such, ACME has been placing utmost importance on the continuous development of its human resources. We train people not only to do their jobs well, but also to give them an environment, which fosters personnel and professional development. Being one of the most dynamic and leading pharmaceutical companies in Bangladesh, we are adequately staffed with highly qualified, experienced and innovative personnel. Over 1600 energetic and highly motivated employees from diverse disciplines are working untiringly with ACME in Bangladesh and abroad. Teamwork is the secret of ACME's success.

This is a reminder to us about our future unfinished responsibility as Acme started with a definitive goal to ensure Health, Vigour and Happiness for all.

Apart from the contribution to the health care system, The ACME Laboratories Ltd. has significant contribution to the industrialization process of the company to catch up with the global village. In the process of doing so, we have battled against the unemployment problem of the country. Our contribution to national sports and cultural events is also not insignificant.

On the occasion of the golden jubilee celebrations, our greetings to all the respected citizens of the country who have always been with us.

OUR GLOBAL OPERATION



The success of ACME in the domestic market prompted it to explore the international market as well. In 1995, it started its first journey to international operation by exporting medicines to Bhutan. Since then it has been expanding worldwide.

At present, ACME has been exporting medicines to Bhutan,

Hong Kong, Myanmar, Nepal, Pakistan, Afghanistan, Philippines, Sri Lanka, Uzbekistan, Yemen, Malta and Vietnam, maintaining a philosophy to ensure 'Health, Vigour and Happiness' for the whole mankind within its means and resources.

Among the medicines exported, Antibiotic, Antihypertensive, Antilulcerant and Vitamins are the most important.

The international marketing section is active in exploring the joint venture production possibilities, establishment of pharmacies, agents or distributors in Central Asia, the Middle East, Africa, CIS countries and other parts of the world.

ACME has started its operation in Pakistan and early reports of success are encouraging for us. We are also planning to set up a manufacturing plant there within a few years.

ACME'S SISTER CONCERNS

- Pharmaceuticals Manufacturer & Exporter** (The ACME Laboratories Ltd.)
- Foods & Beverages** (The ACME Agrovet & Beverages Ltd.)
- Overseas Trading** (The ACME Overseas Trading Ltd.)
- Distributor House** (The ACME Distribution Ltd.)
- IT Business** (ACME IT Ltd.) a licensee of NIIT
- Garments Manufacturer & Exporter** (J. K FASHION LTD.)
- Woolen Wear Manufacturer & Exporter** (Sinha Wool Wears Ltd.)
- Fabrics Manufacturer** (Sinha Fabrics Ltd.)
- Tour & Travels** (Mars Aviation Ltd.)
- C & F Agent** (MB Clearing Ltd.)
- Printing & Packaging** (Sinha Printers Ltd.)

MESSAGE FROM THE CHAIRMAN

Reaching the fifty years land mark of the company is a long-cherished occasion of profound joy and a pride that has no overtones of conceit or complacency but rather spurs us on and provides inspiration to reach even greater heights of success. On the other hand it is sad to note that even as we mark our golden jubilee, the people of Bangladesh are in general, still plagued by poor health care facilities and inadequate access to ethical drugs.



N. Sinha

Nasir-Ur-Rahman Sinha
Chairman
The ACME Laboratories Ltd.



The **ACME** Laboratories Ltd.
Dhaka, Bangladesh

ISO 9001:2000, ANSI/ASQC Q9001:2000
CERTIFIED COMPANY