

STRATEGIC TRANSPORT PLAN

# Integrated rapid mass transit system proposed

SULTANA RAHMAN

The Strategic Transport Plan (STP) has proposed an integrated rapid mass transit system to meet the overall transport requirement of the capital. The plan is designed to enable people to commute in the city more quickly.

Sources in the Dhaka Transport Coordination Board (DTCB) said that five new routes have been proposed which could be developed to cover most of the city. Two among these five routes were fully segregated metro lines while the others were street-run Bus Rapid Transit (BRT). The total length of the system will be 76 kilometers.

There are 13 proposed locations where interchanges between the five different lines of the system would be taking

place.

"Metro lines and BRT will be a reliable and modern mass transit system which will ensure proper transport facilities for the commuters as they will be able to reach their destination without facing traffic congestion," a DTCB official said.

The STP, which had been initiated to design the city's traffic system for the next 20 years with a view to ease the ever increasing traffic congestion and ensuring a sustainable traffic flow and proper public transportation, is nearing completion. DTCB launched the STP in March last year as an extensive study. An American company LouiasPerger in cooperation with Bangladesh Consultant Limited is conducting the study at a cost of Tk 10 crore.

"The STP will be finally submitted next month (March),"

said a DTCB official.

According to the STP, whenever the demand exceeds 20,000 passengers per hour, the tendency is to consider metro solutions and either Bus Rapid Transit (BRT) or Light Rail Transit (LRT) can be used to satisfy the demand.

Sources said Metro line system is to operate in a corridor between the Zia International Airport and Demra on 18.5 kilometers parallel to the existing railway line.

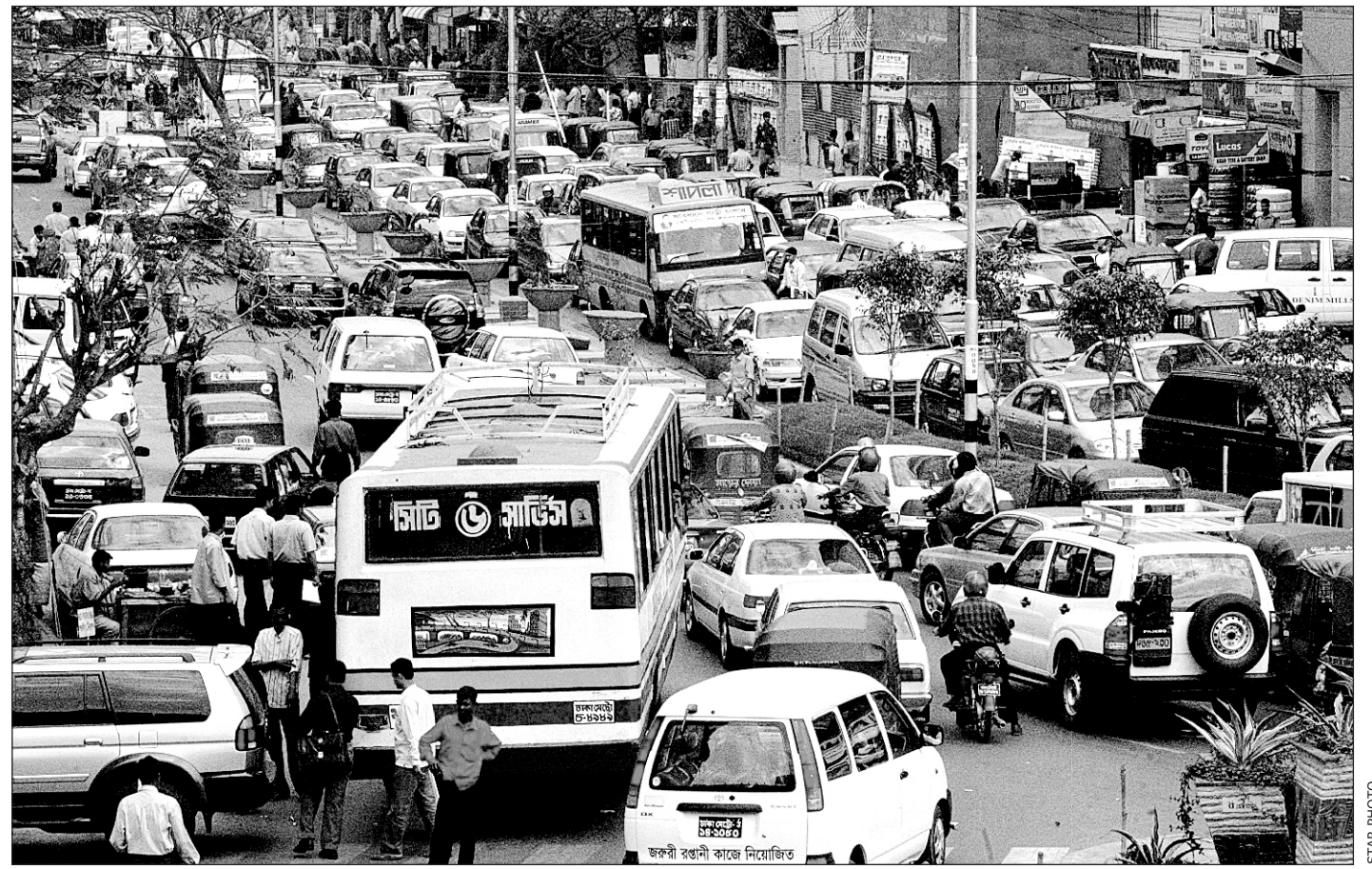
DTCB sources said the STP has considered the factors of urbanisation, expansion of the city's road network and its sustainability, total population and growth rate, the increase in number of vehicles and mode of transportation over the next 20 years.

The BRT line has been located between Kuril and

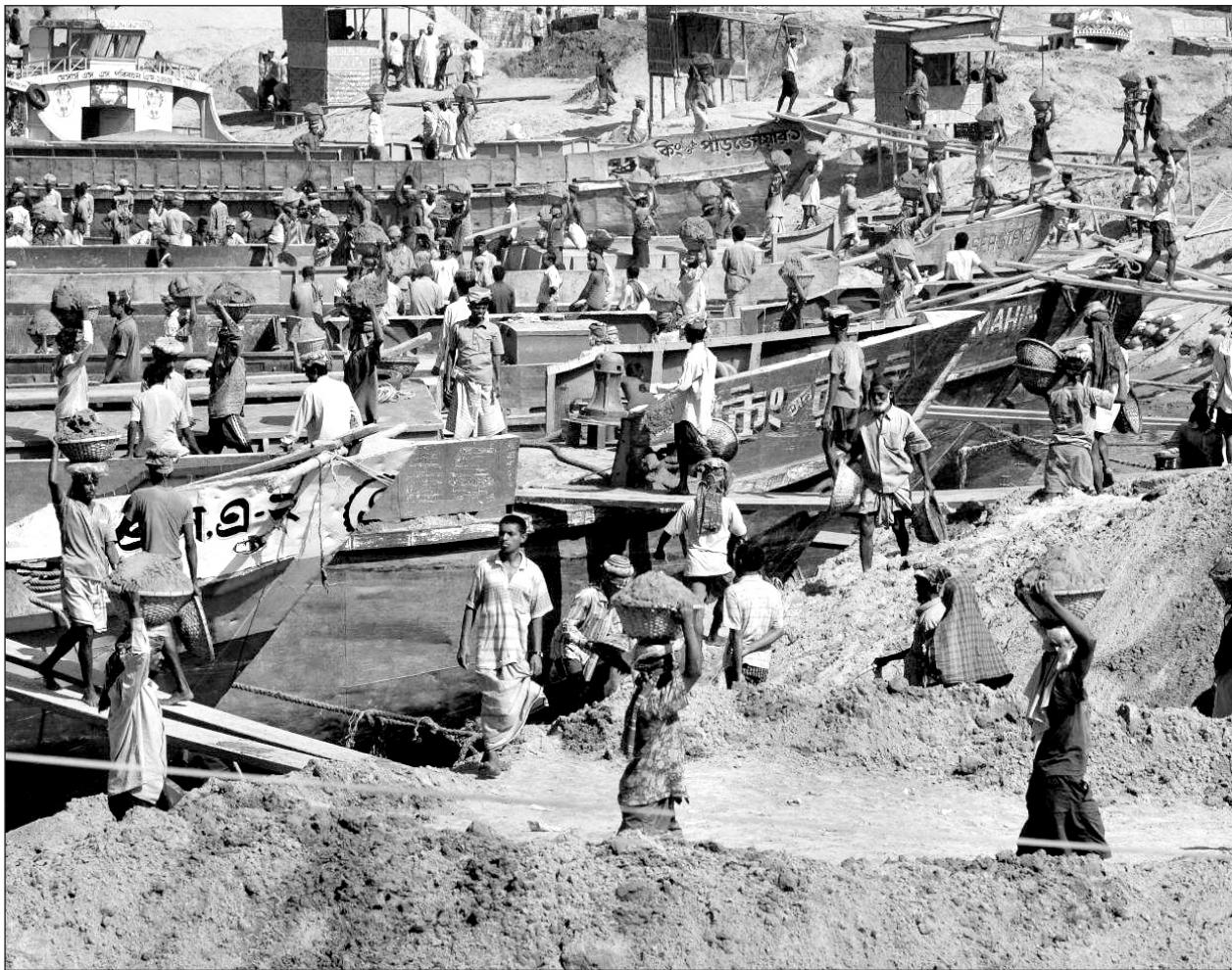
Mohammad-pur and could be accessed from the north of old Dhaka. It will be 17.5 kilometers in length starting at the multi-modal interchange at Kuril where the at-grade BRT line interfaces with the Metro line (aligned underground). The route will run parallel with the Pragati Sharani.

"The BRT lines are divided into five routes that connect the DIT road to a multi-mode interchange with Metro. All the five routes are connected to other lines within the mass transit system," explained the DTCB official.

Modal interchange stations have been proposed at Kuril, Cantonment, Madani, Kamal Ataturk Avenue, Bangabandhu National Stadium, Bijoy Sarani, Tejgaon, Rampura, Sayedabad and Bangabazar.



## BOATS AT WORK



The Circular Waterway (first phase) has brought convenience to the transportation of building materials that were usually transported by road. At Gabtoli, day workers are seen loading sand onto boats and trawlers to be transported to various building sites of the city.

# Mosquitoes persisting at domestic terminal

SABRINA KARIM MURSHED

Passengers and visitors to the domestic terminal of Zia International Airport suffer because the mosquito menace has increased.

On an average, 18 flights take off from the terminal a day. Those flying to different parts of the country have no option but to put up with the mosquitoes in the terminal while waiting to board the craft.

"One can't stand still for a minute but wriggle about to get the mosquitoes off," said Shariful Islam, a passenger coming from Jessore, adding that diseases like malaria or dengue are inevitable.

Tahsina Shabnam, another passenger felt embarrassed in the presence of foreigners because of the mosquito menace. "It is unimaginable! What would they think of Bangladesh?" she said. Shabnam said the authorities should immediately address the problem, as not only countrymen but also international travellers use the domestic terminal.

Things are worse for those waiting outside to receive passengers. It is bearable to an extent during the day but once darkness sets in the mosquitoes increase. "I can neither sit in the car nor wait outside because of

the mosquitoes," said Shamim Hossain, a private car driver.

The supervisor on-duty Ashrafuddin admitted that the mosquito menace has increased within the terminal. "It is incredible how the numbers increased in the past few weeks," he said.

When asked if regular larvicide is sprayed on the adja-

cent water body, Ashrafuddin said the water is not dirty. However, he said the authorities have requested the Dhaka City Corporation (DCC) to take necessary action in this regard.

"We spray Aerosol every evening inside the terminal building. But mosquitoes seem to be immune to such mea-

sures," said an on-duty cleaner. He said DCC people were frequent visitors to the terminal to take action to curb the mosquito menace ahead of the Saarc summit. He said he was not sure if they (the DCC) are supposed to visit the terminal regularly, but they do show up when they are requested to do so.



## healthouting, taxicab & train timing

### HEALTH

#### Hospitals

**Heart**  
National Institute of Cardio Vascular Diseases (NICVD),  
- 9130800, 9122560-59

**Burn**  
Dhaka Medical College Hospital  
Burn Unit-8626812-6

**Cancer**  
National Cancer Institute-8014914,  
8826561-65  
Bangabandhu Sheikh Mujib  
Medical University-8612550-4,  
861455-9

**Diabetes**  
Diabetic Research Hospital  
(BIRDEM)- 9661551-5,  
8616641-50

**Mother & Child Care**  
Shishu Hospital-9119119,  
8116061-62  
Azimpur Mother & Child Health  
Training Institute- 8624827, 8624980

#### Eye

Islamia Eye Hospital-9110794,  
9119315  
National Eye Hospital- 8117202,  
8114807

#### Dental

Dental College -9002035

#### Orthopaedics

National Orthopaedics (Pangu)  
Hospital- 9114075, 9112150

#### General

Dhaka Medical College Hospital-  
8626812-6  
Rushmono General Hospital-  
8317819

Holy Family Hospital-  
83111731-25  
Bangabandhu Sheikh Mujib  
Medical University Hospital-  
8612550-4, 8614545-9

Bangladesh Medical College &  
Hospital- 8115443, 9118202,  
Shamarita Hospital- 9131901  
Suhrawardy Hospital - 9130800,

9122560-69

Salimullah Medical Collage  
Hospital -- 7310061-4, 7319002-6  
Cholera Research Hospital  
(ICDDR)- 8811751-60  
Monowra Hospital 8319802, 8318135

#### Blood Bank

Red Crescent Centre- 9116563  
Sandhani (DMCH)- 8624040  
Sandhani (SMCH)- 7310061,  
7310061,7319022  
Dhaka Medical Collage Hospital-  
8626812-9

#### Eye Bank

Sandhani International Eye Bank-  
8614040

#### Ambulances For Dead Body

Anzuman Mafidul Islam (Kakrail)  
9336611, Gandaria 7319808,  
7318166,  
Al-Markajul Islam 9127867,

### MARKET CLOSED

Gulshan 1, 2 markets-Friday  
Elephant Road-Friday  
Bishal Center-Friday  
Baitual Mukarram Market-Friday  
Polwell Market-Friday  
BCS Computer City-Friday  
Isha Khan Shopping Complex-Friday.  
Rajlaxmi Complex-Friday  
Stadium Market-Friday  
Bangabazar Market-Friday  
National Museum-Thurseday  
Ahsan Manzil--Thurseday.  
New Market-Tuesday  
Gausia Market-Tuesday  
Mouchak Market-Sunday  
Dhanmondi Hawkers Market-Tuesday  
Dhanmondi Hawkers Market-Tuesday  
Farmview Super Market-Sunday  
Muktijuddha Jadughar-Sunday  
Dhaka Zoo-Sunday  
Shishu Jadughar-Sunday

### TAXI CAB

#### Yellow Cab

Navana 9558065  
Salida 9344477, 0171620881  
Cosmo 9112959 and 8127191  
Cab One 7113282-3  
Nihon 8624741-2  
Orion 9347277  
Anudip 8125285 and 8127611  
Capital 9352847

#### TRAIN TIMING

**Subarna Express**  
Mahanagar Prabhathi  
Mahanagar Godhuli  
Turna  
**Parabat Express**  
Joyantika Express  
Upaban Express  
Tista Express  
Ekata Express  
Upakul Express  
AgniBeena Express

Leaves Dhaka at 4:30 pm  
Leaves Dhaka at 7-30 am  
Leaves Dhaka at 3-15 pm  
Leaves Dhaka at 11-00 pm  
Leaves Dhaka at 6-40 am  
Leaves Dhaka at 12-45 pm  
Leaves Dhaka at 9-45 pm  
Leaves Dhaka at 7-00 am  
Leaves Dhaka at 5-00 pm  
Leaves Dhaka at 8-00 pm  
Leaves Dhaka at 9-20 pm

Union 8130485

Kool 0171826731

#### Black Cab

Cab Ex 9358401  
Cabline 8321162  
JBS Cab 019364575  
Sajan 018126036  
Anudip -- 8125285 and 8127611  
Cab One 7113282-3

Reaches Chittagong at 10:35 pm  
Reaches Chittagong at 1-55 pm  
Reaches Chittagong at 10-55 pm  
Reaches Chittagong at 6-40 am  
Reaches Sylhet at 2-30 pm  
Reaches Sylhet at 9-20 pm  
Reaches Sylhet at 6-40 am  
Reaches Bahadurabad at 1-05 pm  
Reaches Bahadurabad at 11-15  
Reaches Noakhali at 5-00 am  
Reaches Jagannath at 2-30 pm

### LIBRARY & INFO

#### Libraries, Cultural and Information Centers

Central Public Library- 8626001-4,  
Shishu Academy- 9564128  
Shilpakala Academy- 8614673  
Bangla Academy- 8619550  
Islamic Foundation- 9550280,  
9556407  
Nazrul Institute- 9114602  
Ford Foundation- 8116133  
Alliance Francaise- 8611557  
Information Resource Center, The  
American Center - 8813440-4,  
9886395-9  
British Council- 8618867-8,  
8618905-7  
Community Development Library-  
8113769, 8113604  
Goethe Institute Int'l- Dhaka-  
9126525-6  
Indian Information Centre &  
Cultural Library- 8850141-2  
The Russian Cultural Centre-  
9116314, 9118531, 9118314  
Drik Photo Gallery- 9120125,  
8112954, 8123412  
Press Institute of Bangladesh  
(PIB) 9330081-4