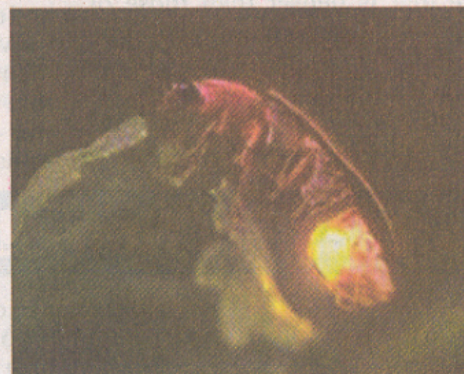


Trivia

1. The metatarsal bones are located in which part of the human body?
2. What is the proper name for the birdie used in a game of badminton?
3. What day of the week is named after the Scandinavian god of wisdom, war, and culture?
4. What country of the world has an annual birth rate closest to 0%?
5. What eternally popular children's literary character was introduced by British writer A.A. Milne in 1926?
6. Words ending with "polis"
 - a) Two U.S. state capitals
 - b) Citadel of an ancient Greek city
 - c) A region made up of several large cities and their surrounding areas
7. From the Spanish word meaning rough or wild, what is the cowboy's term for a bad-tempered or untamed horse?
8. Those hideous female mythological monsters who relentlessly pursued evildoers were known collectively as what?
9. The range of female singing voice that is lower than soprano but higher than alto has what two word name?
10. When dissolving salt in a glass of water, would you expect the glass to warm slightly or to cool slightly?
11. What is the common Element on Earth?
12. How Long Does it take for light from the moon to reach the Earth?
13. How many miles high is Mount Everest?
14. Which Ocean goes to the deepest depths?
15. Which Bear grows larger Brown Grizzly or Polar?
16. What does HTML stand for?
17. If I take 2 apples out of a basket containing 6 apples how many apples do I have?
18. A woman has 5 potatoes to feed 3 children how can she give them equal portions without fractions?
19. It occurs Once in a minute Twice in a week and once in a year what is it?
20. Which is the odd word out queen, king, pawn, bishop, cardinal, castle,?
21. Which 2 words are opposite in meaning -- demand, impede, negate, ignore, provide, assert?
22. What is the world's smallest bird?
23. Why do fireflies flash?
24. Which nation gave women the right to vote first?

Miscellaneous

Q & A



25. How long did Queen Victoria Reign for?
26. Which animal was domesticated first the cat or the dog?
27. Which country features a maple leaf on its flag?
28. What is northernmost land on earth?
29. Who was the goddess of Love in Roman Myth?
30. Who was the goddess of Love in Greek Myth?

Answers

1. In the feet
2. Shuttlecock
3. Wednesday, named after Woden, also called Odin
4. Vatican
5. Winnie the Pooh, 1926 and The House at Pooh Corner, 1928
6. a. Annapolis, Maryland and Indianapolis, Indiana b. Acropolis c. Megalopolis
7. Bronco
8. Furies
9. Mezzo Soprano
10. Cool
11. Hydrogen
12. 1.2 seconds
13. 8,846 miles
14. Pacific Ocean
15. Polar bear is twice the size.
16. Hyper Text Mark up
17. Language
18. Mashed potatoes
19. The letter 'e'
20. Cardinal -- all the rest are pieces in chess
21. Negate and assert
22. Bee hummingbird (2 inches)
23. A chemical reaction related to the mating process
24. New Zealand 1837-1901
25. Dog - 12,000 years, Cat - 4,000 years
26. Canada
27. Not the North Pole, as it is not land -- Cape Morris Jessup Greenland
28. Aphrodite
30. Venus

Source: www.triviacafe.com and <http://www.ukwebstart.com>