

Monipuripara residents unite against crime

PORIMOL PALMA

Aiming to establish a secure and disciplined living in Monipuripara area under Tejgaon Police Station in the city, local residents have set their own civic rules and norms through an welfare organisation -- Monipuripara Kalyan Samiti.

The organisation launched a round-the-clock observation and security system in the area since October 1 to stop any illegal activities and intrusion of any unauthorised person or criminals into the locality divided into 11 blocks.

Apart from patrolling the area, the security guards also work for checking traffic congestion, maintaining cleanliness and helping inhabitants in any emergency, said Mamunul Haque, general secretary of the organisation.

The association put up gates at the five entry points of the area and deployed 24-hour security guards. The gates are closed at 12:00 at night except one.

"We have fixed the rules because there were frequent incidents of robbery in Monipuripara in the past. The miscreants can enter the area and leave easily after committing crimes as the area is surrounded by main roads," Haque said.

Besides, there were many incidents of burglary and snatching, and the people especially who stay in the ground floors even could not sleep without closing the windows, he added. "People were living in an extremely insecure situation."

As population grew fast in the residential area, as many as 17 hostels for working woman or students have been set up in Monipuripara. Many of the girls complain of an increasing trend of eve teasing by local hoodlums.

Every vehicle of the area has a sticker given by the association and vehicles without the sticker are barred from entering the area from 12:00am to 6:00am. However, in case of any emergency,

the association allows any vehicle to enter.

The association has also banned putting up commercial posters or banners in the area to maintain cleanliness. If need be, the association will allocate space for the advertisers on commercial basis, association leaders noted.

They association leaders went door to door to convince the inhabitants about the initiative asking for their opinions and monetary contributions for it. "We could start it when majority of the inhabitants supported the initiative," Mamunul Haque said.

The association has a plan to turn its office into a library and a meeting place for the inhabitants to discuss their problems.

The locals are happy with the social welfare initiative. Mozammel Haque Johuri, a retired government official, said it is a commendable initiative and an example of successful public mobilisation that can resolve local problems.

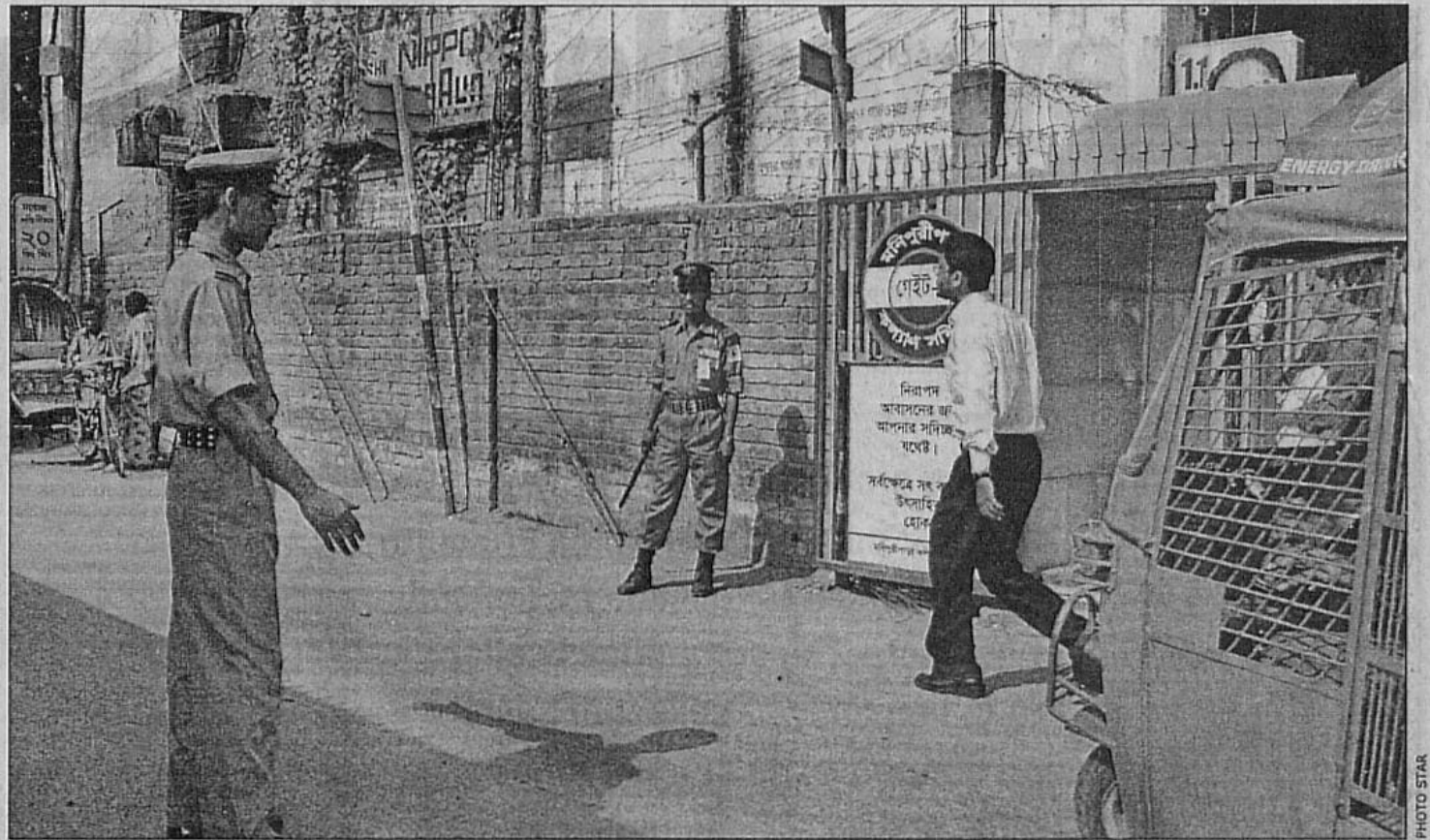
"Now we feel secure at home and walking on the streets even at night," said Deepak Peres, an inhabitant of the area.

The association is run by monthly contributions of the families. Each family contributes Tk100 a month.

As some people questioned if the self-security system goes against the law, Mamunul Haque said they had discussions with the police administration before introducing the system. The police also appreciated the system and assured assistance.

He said there are some 1,700 families in Monipuripara and the monthly collection will not exceed Tk 1.7 lakh. And the monthly expenditure of the association for 45 security guards, logistics and office is more than 1.5 lakh.

"And we are not limited only in security. We also arrange social functions, observe the national days, religious festivals. This year we distributed relief among the flood victims," he said.



With the introduction of the new security system in Monipuripara residents feel safe although many incidents of mugging and pick-pocketing constantly take place.

High turnout at handloom fair

CITY CORRESPONDENT

The Eid Handloom Fair 2004 is experiencing a sharp increase in the flow of customers this year in comparison to previous years.

The traditional fair organised by

the Bangladesh Handloom Industry started on October 14 at Karwan Bazar. Saree and other apparels, textile and handloom products from around the country are available at the stalls of the fair.

Stall-owners said that they had expected the turnout to be high this year as the fair's timing coincided with the Durga Puja and the Eid-ul-Fitr. But they also admitted that many customers are being disappointed. "We had hoped to accom-

modate the majority of the customers but due to a slump in supply this year, there have been some problems with satisfying everyone," said Ali Haque, owner of Karnaphuli Textiles. Still with the Durga Puja, which had just passed, and the Eid-ul-Fitr

right around the corner, business has been quite good. Because of the Durga Puja, sales had been impressive during the first week of the fair. Now the Eid shoppers are flocking the fair and salespersons at stalls fear that they might run out of stock even before the end of the show. The fair which is open from 10am to 10pm, would continue till the last day of Ramadan.

"We do not have sufficient stocks like last year, because of this year's flood," said Haque. Organisers assured that the prices of the products would not rise even in the event of a supply crisis. "We are not going to risk losing our customers in trying to make some extra money," said Haque.

There are around 63 stalls this year but the previous year there were 67. "The lack of enthusiasm is mainly because of the flood. With most products and equipment damaged during the disaster, we have lost many potential participants at the fair," said Haque.

"We usually have handloom shops from Sylhet, Moulvibazar, Naogaon, Tangail, suburban Dhaka and various other corners of Bangladesh participating at the fair and offering innovative and specialised products of all types," said Mohammad Hasan, public relations officer of Bangladesh Handloom Industry.

The fair tradition began in 1988 and it has become an annual event aimed at promoting the handloom industry since. Bangladesh Handloom Industry, which currently has over nine thousand members, organises at least three annual fairs to promote the products.



The handloom fair 2004 at Karwan Bazar that began about three weeks back has drawn many customers this year.

Paribagh cries for water

KAUSAR ISLAM AYON

Residents of the city's Paribagh area have been suffering from severe water shortage and erratic water supply from Dhaka Water and Sewerage Supply Authority (WASA) for the last six months.

Local people have complained that the authorities have not increased supply to the area over the years despite the growth of new housing projects and population.

"The limited supply we receive now courtesy of the water treatment plant at Fakirerpool, is illegally taken away by the slum dwellers of Shabji Bagan," alleged Dr. Sansul Alam, chairman of Shahbagh-Paribagh improvement and development association.

Many residents have been forced to buy water from WASA's supply lorries to meet their daily needs but that has also proved insufficient.

"We are buying water at the rate of Tk 500 per tank although the fixed price is Tk. 200," said Abul Kalam, manager of Paribagh Tower apartment block.

Emergency services in the area are suffering also.

"We are the everyday victims of this crisis. We need continuous supply of water but we only get it once or twice a day," said Dr. Md Ruhul Amin, one of the directors of Module General Hospital where nearly a hundred patients receive treatment everyday.

The devotees at Paribagh Mosque said they do not get water for ablution before

prayers.

Locals informed that there was no supply during the day but WASA has continued to issue bills at its normal rate.

Dr Alam said that the minister for LGRD had reportedly instructed the WASA chairman to solve the problem but there have been no results.

"The minister has ordered the WASA to supply water to this area from the Syedabad water treatment plant which is also our demand. That could solve the problem permanently," Dr. Alam.

A N M Akteruzzaman, managing director (MD) of WASA said that the whole city is facing water crisis as many of the 750 deep tube-wells WASA uses to supply water in the capital have become unusable because of the falling ground water level.

"Unexpected increase in the number of residents in the area is another reason of this crisis. We are looking at the problem on a priority basis," said the WASA MD.

He informed that they have already taken some initiatives that have improved the situation a lot.

"After opening of the Syedabad plant phase 2 they will get a permanent solution to the problem," said Akteruzzaman.

WASA has a capacity to supply 1.27 billion litres per day against a demand of 1.6 billion litres for residents in the capital.

healthouting, taxicab & train timing

HEALTH

Hospitals

Heart
National Institute of Cardio Vascular Diseases (NICVD),
- 9130800, 9122560-59

Burn
Dhaka Medical College Hospital
Burn Unit-8626812-6

Cancer
National Cancer Institute-8014914,
8826561-65
Bangabandhu Sheikh Mujib
Medical University-8612550-4,
861455-9

Diabetes
Diabetic Research Hospital
(BIRDEM)- 9661551-5,
8616641-50

Mother & Child Care
Shishu Hospital- 9119119,
8116061-62
Azimpur Mother & Child Health

Training Institute- 8624827, 8624980
Eye
Islamia Eye Hospital-9110794,
9119315
National Eye Hospital- 8117202,
8114807

Dental
Dental College -9002035

Orthopaedics
National Orthopaedics (Pangu)
Hospital- 9114075, 9112150

General
Dhaka Medical College Hospital-
8626812-6
Rushmono General Hospital-
8317819

Holy Family Hospital-
8311731-25
Bangabandhu Sheikh Mujib
Medical University Hospital-
8612550-4, 8614545-9
Bangladesh Medical College &
Hospital- 8115443, 9118202,

Shamarita Hospital- 9131901
Suhrawardy Hospital - 9130800,
9122560-69
Salimullah Medical College
Hospital - 7310061-4, 7319002-6
Cholera Research Hospital
(ICDDR)- 8811751-60
Monowra Hospital 8319802, 8318135

Blood Bank
Red Crescent Centre- 9116563
Sandhani (DMCH)- 8624040
Sandhani (SMCH)- 7310061,
7310061, 7319022
Dhaka Medical College Hospital-
8626812-9

Eye Bank
Sandhani International Eye Bank-
8614040

**Ambulances For
Dead Body**
Anzuman Mafulul Islam (Kakrail)
9336611, Gandaria 7319808,
7318166,
Al-Markajul Islam 9127867,

MARKET CLOSED

Gulshan 1, 2 markets-Friday
Elephant Road-Friday
Bishal Center-Friday
Baitual Mukarram Market-Friday
Polwell Market-Friday
BCS Computer City-Friday
Isha Khan Shopping Complex-Friday.
Rajlaxmi Complex-Friday
Stadium Market-Friday
Bangabazar Market-Friday
National Museum-Thursdays
Ahsan Manzil-Thursdays.
New Market-Tuesdays
Gausia Market-Tuesdays
Mouchak Market-Sundays
Dhanmondi Hawkers Market-Tuesdays
Dhanmondi Hawkers Market-Tuesdays
Eastern Plaza-Sundays
Farmview Super Market-Sundays
Muktijuddha Jadughar-Sundays
Dhaka Zoo-Sundays
Shishu Jadughar-Sundays

TAXI CAB

Yellow Cab

Navana 9558065
Salida 9344477, 0171620881
Cosmo 9112959 and 8127191
Cab One 7113282-3
Nihon 8624741-2
Orion 9347277
Anudip 8125285 and 8127611
Capital 9352847

Union 8130485

Kool 0171826731

Black Cab

Cab Ex 9358401
Cabline 8321162
JBS Cab 019364575
Sajan 018126036
Anudip -- 8125285 and 8127611

Cab One 7113282-3

Palki 0171052500
Cab I 7113282
Jatri 0171540074
Nipun 9572277
R-Cab 8914782
Star Cab 9571919
Shihab 018202477 & 018228675
KGN 8620011

LIBRARY & INFO

Libraries, Cultural and Information Centers

Central Public Library- 8626001-4,
Shishu Academy- 9564128
Shilpakala Academy- 8614673
Bangla Academy- 8619550
Islamic Foundation- 9550280,
9556407
Nazrul Institute- 9114602
Ford Foundation- 8116133
Alliance Francaise- 8611557
Information Resource Center, The
American Center - 8813440-4,
9886395-9
British Council- 8618867-8,
8618905-7
Community Development Library-
8113769, 8113604
Goethe Institute Int'l- Dhaka-
9126525-6
Indian Information Centre &
Cultural Library- 8615096
The Russian Cultural Centre-
9116314, 9118531, 9118314
Drik Photo Gallery- 9120125,
8112954, 8123412
Press Institute of Bangladesh
(PIB) 9330081-4

TRAIN TIMING

Subarna Express
Mahanagar Prabhathi
Mahanagar Godhuli
Turna
Parabat Express
Joyantika Express
Upaban Express
Tista Express
Ekala Express
Upakul Express
Agnibeena Express

Leaves Dhaka at 4:30 pm
Leaves Dhaka at 7-30 am
Leaves Dhaka at 3-15 pm
Leaves Dhaka at 11-00 pm
Leaves Dhaka at 6-40 am
Leaves Dhaka at 12-45 pm
Leaves Dhaka at 9-45 pm
Leaves Dhaka at 7-00 am
Leaves Dhaka at 5-00 pm
Leaves Dhaka at 8-00 pm
Leaves Dhaka at 9-20 pm

Reaches Chittagong at 10:35 pm
Reaches Chittagong at 1-55 pm
Reaches Chittagong at 10-55 pm
Reaches Chittagong at 6-40 am
Reaches Sylhet at 2-30 pm
Reaches Sylhet at 9-20 pm
Reaches Sylhet at 6-40 am
Reaches Bahadurabad at 1-05 pm
Reaches Bahadurabad at 11-15
Reaches Noakhail at 5-00 am
Reaches Jagannath at 2-30 pm