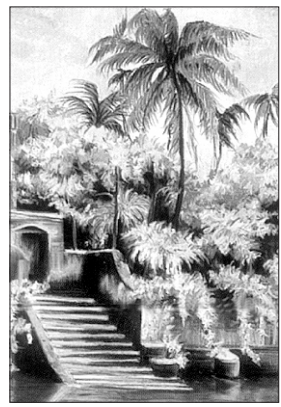
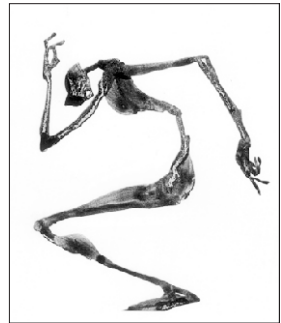


RECOMMENDATIONS



Exhibition July 25-29 Artist Fayekah Assanah is holding her first ever solo painting exhibition at Drik Gallery from July 25. Entitled Imagines, the exhibition was inaugurated by eminent cultural personality Mustafa Monwar. The five-day long show remains open for everyone until July 29.

July 11 - August 1 A miniature art exhibition is going on at the Shiporag Art Gallery from 11 July to 1 August daily from 11 pm to 8 pm. Venue: Gallery Shiporag, House: 15, Road: 16, Dhanmondi.



Maya August 02-11 A solo painting exhibition titled Maya by artist Khaled Mahmud will be inaugurated on August 2 at La Gallery, Alliance Francaise (26, Mirpur Road, Dhanmondi, RA) at 5.00 pm. The display of artworks will remain open everyday from 9.00 am to 8.00 pm. till August 11.

Exhibition

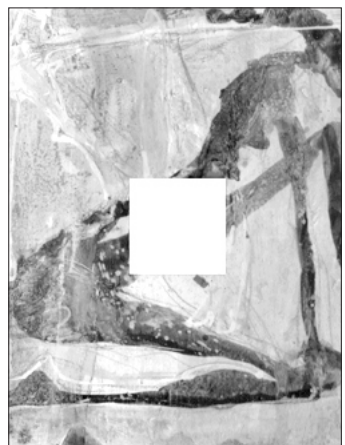
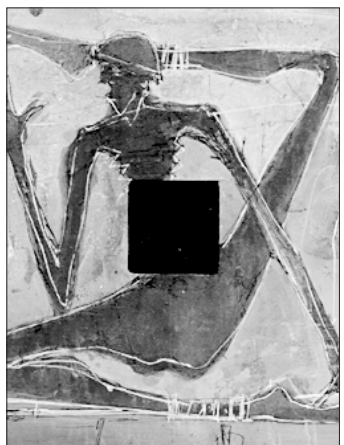
Art works that speak through satire

Khaled Mahmud's exhibition at Alliance Francaise

FAYZA HAQ KHALED Mahmud, who is having his exhibition "Maya" at Alliance Francaise from August 2, says, "Colours and lines are the two salient elements that shape my pictorial scheme. The lines are drawn to outline my figures, which are mainly female mythical images. The women in my works are mythical 'kanyas' and their structures and gestures are not in line with the old stories that we are familiar with. But they are certainly an embodiment of the ethos that runs through the texts of Hindu

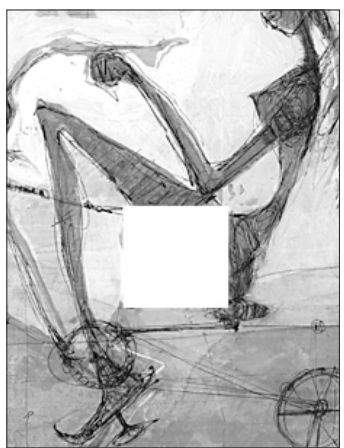
modern. In the next painting we see a woman riding on a bicycle which represents the materialistic elements in our present time. At first the woman used the tiger for her ends and now she has the bicycle. The second painting is in gold and yellow. Another work shows a woman who is ready to get married which is symbolized by the ornaments around her. Side by side the concept of marriage is satirized by making the woman sit in an overly sexual way which is undeniably vulgar. "I've combined the beauty and baseness of the elements of sex in this work," Mahmud says. "In our society we

another mythological character, has been presented with many hands and legs, while one cannot make out the details of the face. The character is surrounded by red and purple. "At one time we had deities and glorified personalities to follow but now we don't and we tend to be confused." In the next painting we come across the relationship of a woman/man and her/his dog. The dog stands both for the husband or the wife that takes the commands. In a marriage there is one person who takes the lead and gives the command, according to Mahmud. This painting is in red, orange and black and



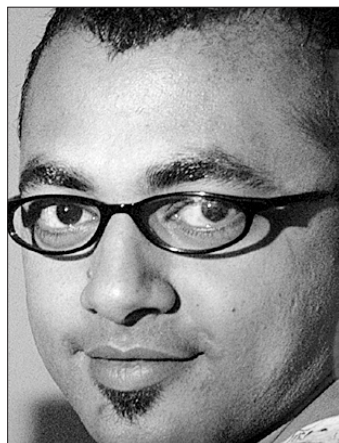
myths. Through the 'kanyas' I have expressed fear, love and hatred -- all shades of human emotions. I have two kinds of works, one being paintings and the other prints. I approach my work through drawings. My paintings and drawings are done into a frame so that my works have a 3-dimensional effect. I remove the centre of the canvases to illustrate the incompleteness of our individual selves. The frame of our mind is like a window, which can be partially closed or fully curtained. I want people to ask themselves, "How do I look through a frame? From what point of view do I perceive my work, religion, my girlfriend?"

In one of his paintings is the goddess Kali in the modern form, in gray and white, with many hands, and in front of it is a tiger. Mahmud has taken a myth and transferred it into something



symbolizes the relationship between a man or a woman and the partner in a marriage. Kali is presented in another painting and she has been presented in a modern way. In this the artist presents the energy of woman in particular, and people in general. This is in black and red. "In the black I bring in beauty and boldness," Mahmud says. Another painting presents a man who spends all his time. He is seen sprawled on the bed with the bed sheet comprising most of the forefront of the composition. This is in black, orange and red. In another painting the artist has a dog and he says that an animal too have importance in our lives and may have characteristics by which we remember it by. In yet another painting we see two bent figures which represents the friendship between a man and a woman. This

stress on the beauty and tend to play down the ugliness." This painting is in blue, gray and white. In another painting Shiv,



Khaled Mahmud, the artist

is in black, gray, orange and red. Asked why he had holes in the middle of his square paintings, Mahmud says, "There is no particular concept inside that except that you are compelled to look through the frame which is fixed in our mind and you look at what you want to look at. People see preconceived images in objects before them. Art provides perception of what lies beyond the confines of economics and politics. The window I provide is a limited horizon confined by our perception. Again, my work is an art which is never finished. I have presented events in our lives with the colours of my own vision. My characters have been presented in an exaggerated and presented with a satirical turn. I want the viewers to peer into their own lives stirred on by my works."

Talking about the artists that he is inspired by Mahmud says that he is inspired by Mohammed Kibria and Monirul Islam. In prints he has tremendous admiration for Kalidas Karmakar.

Khaled Mahmud is doing his masters in Fine Arts. He has studied video work with World Vision in 1994 and photography with world Literature Centre in 2000. He has done a workshop with Chandi Lahiri from India, Shishir Bhattacharjee, and Nirmal from Nepal in 1997. He got a Zainul Award for his prints from the Institute of Fine Arts in 2003; he has participated in more than 20 joint exhibits.

Around the world

Jolie to be Alexander the Great's mum

REUTERS, New York ACADEMY Award winner Angelina Jolie is proud of playing high-flying action hero Lara Croft on screen and believes the character is a role



model grounded in reality.

Jolie reprises the role in "Lara Croft Tomb Raider: The Cradle of Life" opening in the United States on Friday, playing a cultured, yet spectacularly athletic and attractive British adventurer.

The Oscar winner in 2000 as Best

interview. "She's strong enough. And I think she's very complete as a woman because she's a lady and she's intelligent but she's also able to get dirty and wild. I think she's got a nice combination of most of the women I know."

Croft also has supreme martial arts skills, uncanny marksmanship, scores of electronic gadgets, boundless courage and a weapons arsenal that would make small countries envious.

Shot on locations ranging from Wales to Greece to Kenya to Hong Kong, the film tells the tale of a treasure hunt that turns into a mission to save the world from a Nobel scientist gone very bad.

The action scenes and scope of the film outstrip the first 2001 "Tomb Raider" movie, which grossed nearly \$300 million worldwide.

Croft pole-vaults from a roof top onto a passing helicopter, makes a head-first escape down a lifeline hanging from a cliff and executes a free fall dive off the 84th floor of an unfinished Hong Kong skyscraper.

Stunt work

To pull off the stunt work required, Jolie plunged into serious training, including gymnastics, weight lifting, bungee jumping, motorcycling, kick boxing, martial arts and weaponry.



Supporting Actress for "Girl, Interrupted," said Lady Croft does not have to be "anti-man" to be a strong woman.

"She's very sexual and she's very sensual but she doesn't use it to win," Jolie told Reuters in a recent

"There's a few really hard months of training learning these new skills, and lots of bruises and falling over," said the 28-year-old Jolie. "But it's great. It's such a great excuse to get in shape."

Beyond the physical demands,

director Jan De Bont had big praise for Jolie's acting. "I think what makes it so special is she is a very daring actress," said the Dutch director, whose previous action films include "Speed" and "Twister."

"Quite often when an actress goes into an action movie they think it's relatively easy and so mechanical. The truth is that it's very difficult, more difficult than a drama."

"When you have a dramatic scene around a table it's pretty relaxing but if you hang upside down and you have to do things it's not so easy."



Shammi Kapoor admitted to hospital

PTI, Mumbai

Former cine star Shammi Kapoor was on Friday admitted to the Intensive Care Unit of the Breach Candy Hospital in south Mumbai for treatment of lung congestion.

The actor, who was suffering from bronchitis, had developed serious lung congestion in the past few days, family sources said. "However, he is stable right now," the source added.

The actor had shot to fame with films like Jungle, Brahmachari, Teesri Manzil and Khamiri Ki Kali.

Brother of legendary actor-producer Raj Kapoor, Shammi had acted in several Hindi films. However, for the last few years he had been leading a retired life.

TV GUIDE

All programmes are in local time. The Daily Star will not be responsible for any change in the programme.

Table listing TV programmes for ATN Bangla, ntv, and Channel-i, including news bulletins, dramas, and entertainment shows.

Table listing TV programmes for Star Movies, ZEE Cinema, ZEE TV, and BBC World, including films and news segments.

Table listing TV programmes for Star Plus, Star Gold, and National Geographic, including shows like ShaKa Laka Boom and Treasure Seekers.

Table listing TV programmes for Discovery and Alpha Bangla, including shows like Adventure One and Moniya.

Table listing TV programmes for Animal Planet, Friends, and other entertainment shows.

Table listing TV programmes for Animal Planet, Friends, and other entertainment shows.

Table listing TV programmes for Animal Planet, Friends, and other entertainment shows.

Table listing TV programmes for Animal Planet, Friends, and other entertainment shows.

Table listing TV programmes for Animal Planet, Friends, and other entertainment shows.

Table listing TV programmes for Animal Planet, Friends, and other entertainment shows.