

RECOMMENDATIONS

Theatre's Balod

December 27
Renowned drama group Theatre will hold its 26th production Balod, a drama based on the Liberation War of Bangladesh.

15th National Fine Arts Exhibition 2002

December 28
The 15th National Fine Arts Exhibition 2002 starts on December 28 at the Bangladesh Shilpakala Academy.

Exhibition

December 27-January 8
A solo exhibition of paintings by AH M Bashirullah will start at the Alliance Francaise de Dacca on December 27 at 5 p.m.

Concert

December 27
A concert will be held at 3 p.m. at the BCIC auditorium to raise funds for the acid-victims.

Tapan Sinha Retrospective

Zahir Raihan Film Society. December 27
Adalat O Ekti Meye (1981) at 05.30 p.m.

Documentary

Caring for the Wildlife

"Dharitri" and CIDA jointly screen country's first documentary on Royal Bengal Tiger

HARUN UR RASHID

ONE hundred years' time is quite a long period when considered against the average lifetime of a human being.



Sponsored by the Canadian International Development Agency (CIDA) and Dharitri, a local media and communication agency, the documentary has already earned appreciation as the 48-minute long film on the Royal Bengal Tiger is the first of its kind made in Bangladesh.

As a Development Communicator Razia has focused in the film on the fact that awareness creation regarding environment and wildlife conservation is essential amongst the traditional groups, who enter the forest to make a living.

tigers to become man-eating predators.

Razia, however, does not put the blame entirely on these poor village people. There are those dishonest poachers who illegally hunt deer and tigers, and trade the animals' bones and skins for money and dubious medicinal products.

During her stay of about four months in the Sundarbans, Razia has filmed some marvellous and charming sights including scenes of a few tigers. When the first tiger

appeared on the screen at the film show, the thrill of the moment, the overwhelming feeling that Razia had felt, also touched the whole audience with the same awe.

Apart from the tigers, Razia has also shot with her camera some other beautiful creatures of the Sundarbans such as the spotted deer, monkeys, the brown headed Machhranga, crocodiles, porpoises, snakes, woodcock, large and small crabs.

the direct result of imprudent human activities. The film also shows the mystery and charms of the scenic beauty of the Sundarbans, which might promote tourism both in the country and abroad.

In her film, Razia points out one very important fact, that the tiger does not attack any animal unnecessarily, nor does it become man-eater if there is sufficient supply of its natural food resources.

Craft

Sweets of Bangladesh: delightful delicacies

A slice of the new year's images: "Singer" calendar-2003

CULTURE DESK

AS in the previous years, Singer Bangladesh Limited has brought into light its corporate calendar this year too.

Monda, mithai, mishti or sweetmeat in English, is a tradition that runs deep not just as food but as a cultural expression. Here in Bangladesh, sweetmeat is an essential element in our social and familial occasions.

A wide variety of sweetmeats are available in our country. Once they were sold in claypots or wrapped in banana leaves; today they are also being exported abroad.

The Ghosh community of Tripura first invented this type of sweetmeat. In the beginning of the 19th century, they used to supply this as per the demand of different social and family occasions.

Kushtia's Motka
Kushtia's Nital Paul first began making this sweet in Kumarkhali. Made with sugar syrup, this sweet is

also known as Kushtia's Khaja. motka tastes delicious with "mur" made from newly harvested paddy in winter.

Porabari's Chamcham
Around 150 years ago the Gauda community of India came to Porabari, a place near Tangail. The sweet, which they began making with curd and molasses gradually took the name "Porabari's chamcham."

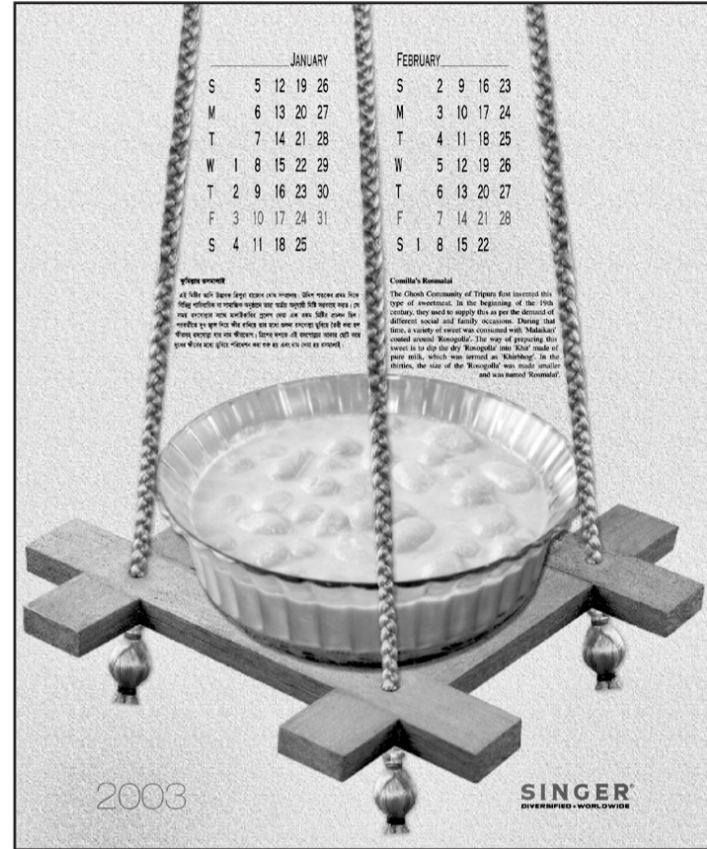
Brahmanbaria's Chhanamukhi
In the early 19th century, the Ghosh community of Brahmanbaria brought forth this item. In the beginning, the sweetmeat was as big as a cake in size.

is usually available in Brahmanbaria and Comilla.

Faridpur's Danadar Mishti
Sweetmeat maker Laxman Ghosh belonging to Bhanga thana of Faridpur district first began making this sweet.

Muktogachha's Monda
Gopal Paul, a migrant from Murshidabad, first made 'monda' at the beginning of the 18th century.

Through the absorbing arrangement of the sweets of Bangladesh, "Singer" has ventured to remind us of our cultural heritage.



TV GUIDE

Table with TV schedule for BT, H, AX, CH, and S channels, listing programs and times from 8:40 to 12:00.

Table with TV schedule for H, AX, and S channels, listing programs and times from 6:30 to 7:30.

Table with TV schedule for H, AX, and S channels, listing programs and times from 8:00 to 11:00.

Table with TV schedule for H, AX, and S channels, listing programs and times from 11:30 to 12:00.

Table with TV schedule for H, AX, and S channels, listing programs and times from 12:00 to 12:30.

Table with TV schedule for H, AX, and S channels, listing programs and times from 12:30 to 1:00.

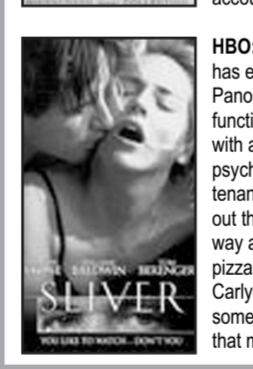
Table with TV schedule for H, AX, and S channels, listing programs and times from 1:00 to 1:30.

Table with TV schedule for H, AX, and S channels, listing programs and times from 1:30 to 2:00.

Table with TV schedule for H, AX, and S channels, listing programs and times from 2:00 to 2:30.

Table with TV schedule for H, AX, and S channels, listing programs and times from 2:30 to 3:00.

TODAY'S HIGHLIGHTS



STAR MOVIES: 7:00 p.m. Apocalypse Now. Based on Joseph Conrad's Heart of Darkness, this is a controversial addition to the multitude of Vietnam war movies in existence.

Table with TV schedule for H, AX, and S channels, listing programs and times from 2:00 to 3:00.

PICK OF THE DAY



The Nutty Professor
On HBO at 10.00 p.m. Sherman Klump is an incredibly fat and good-hearted man.

Table with TV schedule for H, AX, and S channels, listing programs and times from 3:00 to 4:00.

STAR GOLD

Table with TV schedule for H, AX, and S channels, listing programs and times from 6:00 to 7:00.

Table with TV schedule for H, AX, and S channels, listing programs and times from 7:00 to 8:00.

STAR PLUS

Table with TV schedule for H, AX, and S channels, listing programs and times from 6:00 to 7:00.

Table with TV schedule for H, AX, and S channels, listing programs and times from 7:00 to 8:00.

STAR WORLD

Table with TV schedule for H, AX, and S channels, listing programs and times from 6:00 to 7:00.

Table with TV schedule for H, AX, and S channels, listing programs and times from 7:00 to 8:00.

STAR SPORTS

Table with TV schedule for H, AX, and S channels, listing sports events and times from 7:30 to 8:00.

Table with TV schedule for H, AX, and S channels, listing sports events and times from 8:00 to 9:00.