

**"Destination Sydney"**

- Do you plan to Fast Track Your Career?
- Do you plan to do MBA without any Work Experience?
- Do you plan to complete your Bachelor in Two Years?

**Look no further, come to the Interview Session.**

Dynamic & Career Oriented students interested for admission and credit transfer to the Australia's leading providers of Business & IT education with high quality in a metropolitan environment, financially capable are cordially invited to attend the interview with.

**Ms. Beth Brice, Marketing Manager, Charles Sturt University programs**

Date : November 28, '02 Time : 10am-12pm & 2.30pm-4.30pm Venue : CASCL (Banani)  
 Date : November 29, '02 Time : 10am-12pm & 2.30pm-4.30pm Venue : CASCL (Banani)

**Admission is going on for Jan, Feb, Mar 2003**

**Must Bring Two Copies of Certificates & Mark Sheets and Five Photographs**

100% visa success rate, even with spouse (conditions apply)

For detail information please contact :  
**Center for Advance Studies and Counseling Ltd. (CASCL)**  
 House # 16 (1st Floor), Road # 27, Block # J, Banani, Dhaka-1213  
 Phone : 8820495, 9890916 Fax : 880 (+2) 8813926 e-mail : cascl@citech-bd.com

**'Include repression on women in PRSP'**

**STAFF CORRESPONDENT**

Repression on women has to be taken as a separate issue in the Poverty Reduction Strategy Paper (PRSP) to contain violence against them.

This was stated by Dr Binayak Sen, senior research fellow, Bangladesh Institute of Development Studies (BIDS) while speaking at a national dialogue titled 'PRSP and Gender' in the city on Tuesday.

Initiating the dialogue on gender issue, he said violence against women has reached an alarming level.

Dr Binayak Sen said to stop repression on women, the government had to take some emergency steps like speedy trial and cancellation of the 'so-called' safe custody for women.

Organised by Gender Trainers' Core Group (TCG) and coordinated by Steps Towards Development (STD), the dialogue was held at GIRDAP auditorium.

Syed Golam Kibria, additional secretary, Economic Relation Division (ERD) addressed the dialogue as chief guest while Bela Nobil, member of TCG, chaired the function.

Dr M K Mujeri, research fellow of BIDS, initiated the dialogue on PRSP.

Margaret Verwijk, first secretary, Royal Netherlands Embassy in Dhaka and Rokiya A Rahman, former advisor of the caretaker

government spoke on PRSP as guest speakers.

Shafiqul Islam, acting country director of Action-Aid, Bangladesh, Maheen Sultan, member, Nari Pakkha, Khaleda Salahuddin, vice president, Women for Women, Sheepta Hafiza, coordinator, Human Resource and Gender, Care Bangladesh and Zinnat Afroz, gender advisor, PLAN Bangladesh, spoke on Gender Issue.

Nahid Sultana, member, TCG said thirty per cent participation of women in policy making has yet to be realised.

**Roundtable in Ctg December 30**

**CU CORRESPONDENT**

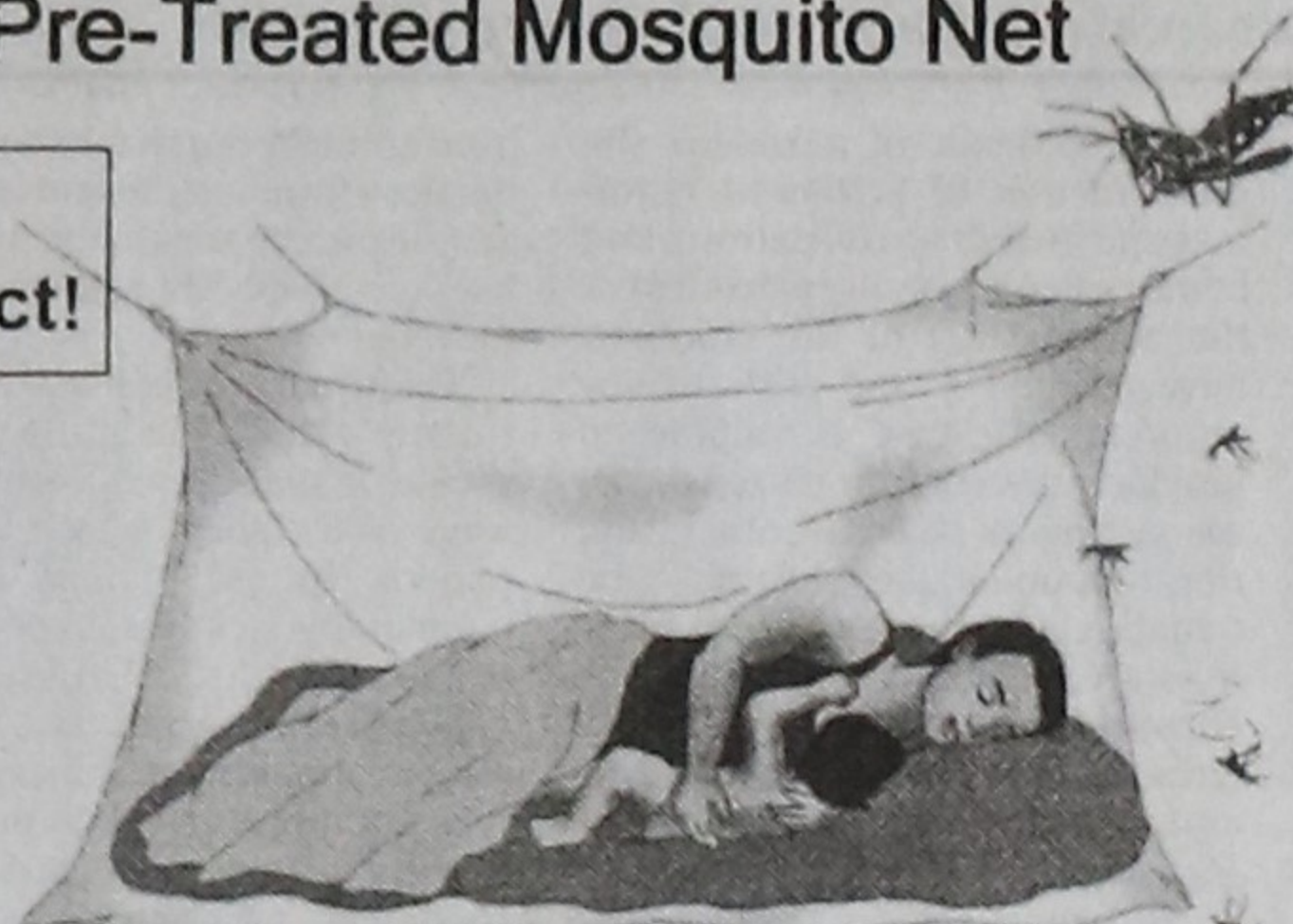
A roundtable on 'Live and let live from AIDS' will be held at a city hotel in Chittagong on the occasion of World AIDS Day on December 30.

**PERMASAFE MOSQUITO NET**  
 Deltamethrin Pre-Treated Mosquito Net

Net that actually kills mosquitoes on contact!

Effective even after 30 washes

Protect your family against mosquito bites



Please call or visit our sales center at **Safeway Pest Control**

Consumer Products Division  
 UAE Maitree Complex, 2nd Floor  
 4, Kemal Ataturk Ave., Banani, Dhaka-1213  
 E-mail: safeway@bdmail.net  
 Tel: 988 1832 / 988 1098 / 011 862733

Manufactured by:  
**Slamdutch Mosquito Netting Co., Ltd**  
 Thailand

ELISA machine installed at DMC

**BSS, Dhaka**

Sandhani, voluntary organisation of the medical students, yesterday installed an enzyme linked immuno solvent assay (ELISA) machine at its Dhaka Medical College (DMC) unit here for testing Hepatitis B, Hepatitis C, HIV and Syphilis.

Dr M K Mujeri, research fellow of BIDS, initiated the dialogue on PRSP.

Margaret Verwijk, first secretary, Royal Netherlands Embassy in Dhaka and Rokiya A Rahman, former advisor of the caretaker

government spoke on PRSP as guest speakers.

Shafiqul Islam, acting country director of Action-Aid, Bangladesh, Maheen Sultan, member, Nari Pakkha, Khaleda Salahuddin, vice president, Women for Women, Sheepta Hafiza, coordinator, Human Resource and Gender, Care Bangladesh and Zinnat Afroz, gender advisor, PLAN Bangladesh, spoke on Gender Issue.

Nahid Sultana, member, TCG said thirty per cent participation of women in policy making has yet to be realised.

**Villa Feroza**

South Facing  
 1420 sqft. Apartments  
 at **Lalmatia**  
 Plot -7, Road -18  
 Block-B, Dhaka  
 Member REHAB

**LivingStone LTD.**

House # 50/A, Street # 2 Banani (Old) D.O.H.S. Dhaka-1206. Tel: 8826083, 8824210, 9883653, 8820646

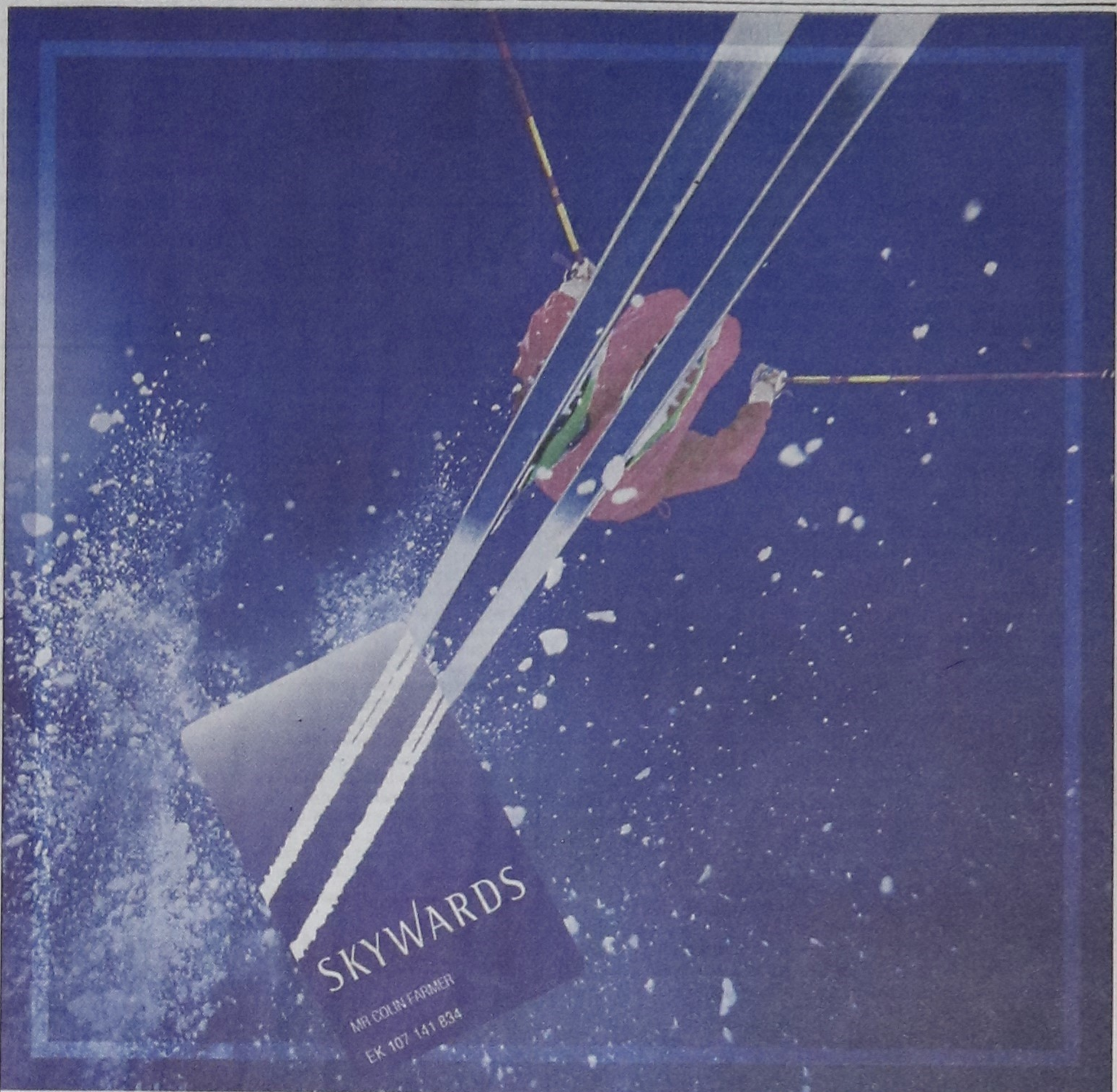
★ **ONE DAY SALE** ★  
 29TH OF NOVEMBER FRIDAY  
 (From 10:00 am-10:00 pm)  
 An Exclusive Collection of **SALWAR.KAMEEZ**  
 AT GULSHAN-1

Road No. 143 Apt-C2 House SE (H) 6 Dhaka-1212 Phone: 8820538 Mobile: 019382405, 0171116317 C-2548

**Moochie**  
 Celebrate your feet.  
 With beautifully handcrafted Ladies shoes and matching handbags

**NEW ARRIVALS FOR EID**

At: Adidas, Levis, Dockers Store,  
 Gulshan 1, Gulshan Avenue, Phone: 9895894  
 at the Apex Gallerie, BDR, Rifles Square, Dhumrundi



Go that extra mile for a well-earned break.

Enjoy a well-earned break courtesy of Skywards, Emirates' frequent flyer programme. The more you fly, the more Skywards Miles you will earn. You can redeem these for leisure breaks to many wonderful destinations around the world. Whether it's flying down the slopes of your favourite ski resort, lounging at an exclusive health spa or trekking on an African safari, Skywards can help you get there. So sit back. Relax. And start planning your next break.

For further information about going that extra mile, contact Emirates or visit [www.skywards.com](http://www.skywards.com)



[www.emirates.com](http://www.emirates.com)

Over 200 international awards, 60 international destinations. For more details contact your local travel agent or Emirates on 9563825-27 (Dhaka) 725647 (Chittagong) or 712159 (Sylhet).

cdmaOne

**Tk. 7,999**  
 Audiovox CDM 135

**Tk. 7,999**  
 LG VIII

**Tk. 8,999**  
 Motorola T182c

**Tk. 11,999**  
 Hyundai 600E

**Eid Greetings from আল্লাহ**

Get 2 Free Prepaid Cards of Tk. 275 With Every Aalaap Connection! \*\*



Outgoing	Peak (8 am - 8 pm)	Off-Peak (8 pm - 8 am)
To Mobile	6.00	5.00
To BTTB	N/A	4.00 + BTTB charges
Incoming		
From any Mobile	Free	Free
From BTTB	3.00	2.00

● Monthly line rent not applicable. VAT as applicable.  
 \* For Off-Peak hours only.

- T&T outgoing\*
- T&T incoming
- 20 second pulse after the 1st min.
- Nationwide roaming

Only **CITYCELL** gives you the **LOWEST RATE** all day all night.

\*\* This offer is valid till 15th December

Find the dealer list on the 5th page

