

RECOMMENDATIONS

Art Exhibition

September 13-25
Charcoal, a contemporary artists' group holds an art exhibition at the Alliance Francaise gallery...

Group art show

Sept. 07-16
Artistes Laila Sharmin, Bipasha Hayat, Sarkar Nahid Niazi, Asma Sultana and Nadia Anjum exhibit their works...

Solo art exhibition

September 14-15
Artist Laila Sharmin holds her solo art exhibition at Hyacinth Garden Gallery...

Dance festival

September 15-17
Nriya Dhara, a dance institution hosts 'Bangladesh Dance Festival', a 3-day event...

Music CD launching

Sept. 14-15
Bengal Shilpalaya presents launching ceremony of two CDs, one of Nazrul songs...

Cinema

Sept. 17-18
Eight shows, four each day, at 5, 6, 7 and 8 p.m., will be screened at the Goethe Institut...

Exhibition

A social message through photos of human parts

Mustafa Zaman's solo exhibition opens at Zainul Gallery

FAYZA HAQ

MUSTAFA Zaman, who is having his solo exhibition at Zainul Gallery says, "Most of these pictures are taken from magazines which are medical journals..."



being affected and doctored by the social milieu. The hands around him represent social bindings. The man is trying to talk but he will not be able to articulate anything as he has been given the injection of abstraction..."

who should not accept everything lying down. This response should stir people and they should wake up to realize the truth around them. The first work that I did was that I picked some photographs from a medical journal...

and political surroundings. I have classified the hands as those of the manipulators, while the victims are the common people. As man's existence is body oriented I have brought in such images as the tongue or the ear...

ourselves. As a consequence there is the regimentation of our society. The people are being branded or stamped like cattle. Similarly there are the photos of the backbone and this is important as there is a saying that if a man is courageous he has a backbone...

"This is about individuality and I question if we are using our tongues to express our own thoughts rather than those of others. Our thoughts are influenced and streamlined so that we are not speaking freely. This is due to the pressure of our rulers in the past, present and future..."

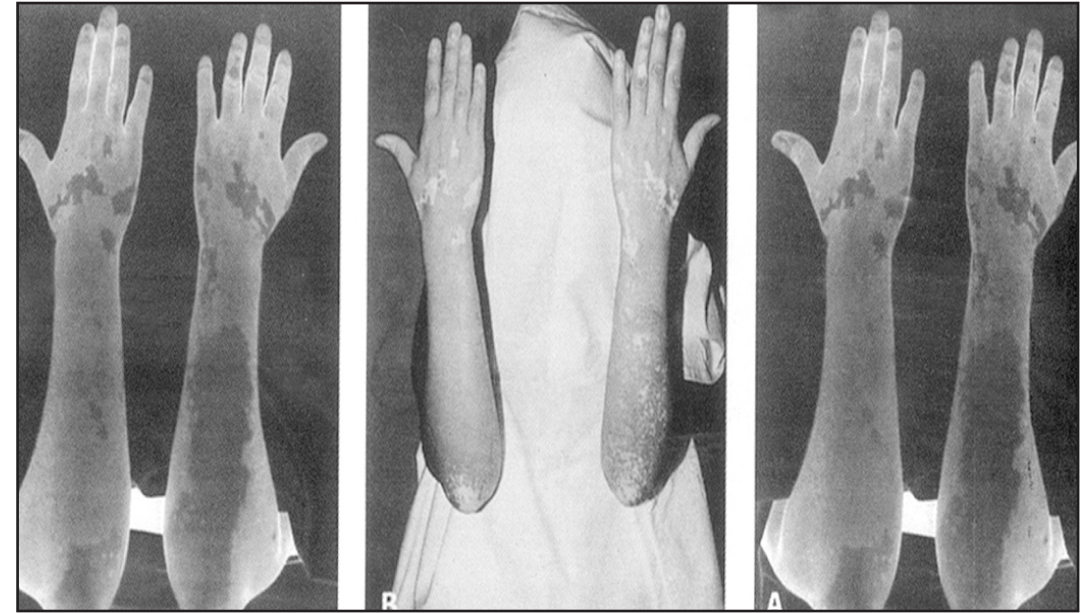
the photos that protest against cloning and the social conditions that encourage it. "Cloning can be used to change our society and we all know that Hitler tried this in order to produce a class that would follow his orders and regimentation," says Mustafa.

Finally we come across the photos labelled "Epic of the hands" and they are diseased as "we are not doing anything useful with them and so we are failing to express ourselves. We hide our thoughts behind masks, and use our hands to serve the powerful 'manipulators'..."

Mustafa Zaman has used photos to express his total disenchantment with the prevailing socio-economic and political conditions. His photos are symbols of a debased and degraded people succumbing to the dictates of authority.

On one side of the photos are parts of mannequins with scissors hanging from them. Mustafa says, "I call the tailor a 'philosopher' as we are dependent on the clothes he makes. We are very bothered about how we look and so the role of the tailor is important in our lives..."

Again, there are mutated figures. These are figures of women and represent the primeval mother. Primitive religion used such figures for worship. The women are seen from the back but they have heads with mouths and eyes as well as breasts seen in the form of lines and dots. "This is about when we lose sight of reality and get mixed up with falsehood. We see the back being mixed up with the front of the figures," says Mustafa. Next there are



TV GUIDE

Table with columns for BTV, ATN BANGLA, and CHANNEL-i, listing programs and times.

Table with columns for ATN BANGLA, HBO, STAR PLUS, and BBC WORLD, listing programs and times.

Table with columns for Click Online, HBO, STAR PLUS, and BBC WORLD, listing programs and times.

Table with columns for TODAY'S HIGHLIGHTS, STAR GOLD, STAR NEWS, STAR WORLD, and CHANNEL [V], listing programs and times.

Table with columns for PICK OF THE DAY, STAR NEWS, NATIONAL GEOGRAPHIC, and CHANNEL [V], listing programs and times.

Table with columns for HALLMARK, ZEE TV, and ZEE NEWS, listing programs and times.

Table with columns for ALPHA TV BANGLA, ZEE TV, and ZEE NEWS, listing programs and times.

Table with columns for ZEE ENGLISH, ZEE MUSIC, and ZEE MGM, listing programs and times.

Please add 30 min. to schedules of foreign channels to match with BST