

RECOMMENDATIONS

Photography exhibition

August 23 September 01
A solo photography exhibition titled, 'Our glorious past: Sonargaon' by photographer Syed Zakir Hossain, begins at the DRIK gallery of Dhanmondi in the city.

Architectural designs' show

Aug. 17 Sept. 09
An exhibition goes on at the National Museum at Shahbagh in the city to reveal the unfolding drama of the design and construction of Sher-e-banglanagar.

Documentary

August 29-31
Directed by Kawsar Chowdhury, a documentary production 'Shei raat-er kotha bolley eshechi' (Tale of the darkest night) appears on screen at the auditorium of Russian Cultural Center at the following timings:

On August 29 at 4:00, 5:00 and 6:00 p.m.
On August 30 at 10:00, 11:00, 3:00, 4:00, 5:00 and 6:00 p.m.
On August 31 at 5:00, 6:00 and 7:00 p.m.

Japanese Art

August 24 - 30
An exhibition of Japanese painter Toshiya Suzuki continues at the Zainul Gallery of the fine arts institutes in the city.

Exhibition

Young artists with flare and flamboyance

Exhibition of eleven young artists at the Russian Cultural Centre

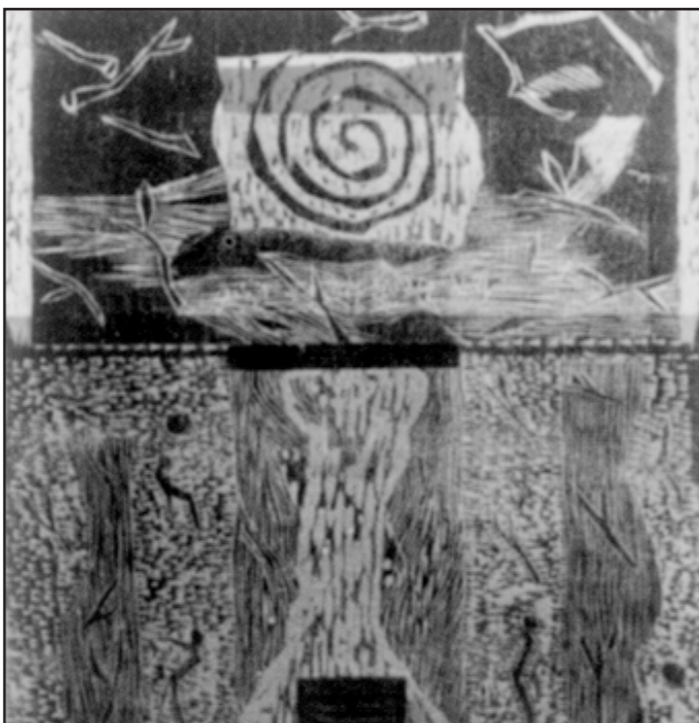
FAYZA HAQ

THE exhibition of eleven young promising artists is being held at the Russian Cultural Centre. They present different styles and themes with aplomb.

Rafi Haque's 'Pale moon' brings in the moon in the form of a disc that had a curl of purple on it apart from lines in red and yellow. It has a gray rectangle for a base and had lines of yellow at the side and in between.

Babul Mahmood's 'Humanistic-2' has the appearance of a painting partially covered by a paper like some curtain. Beyond that one can see the dark night with its crescent moon and some blue wild growths in the foreground.

Mahabubul Islam's 'Simultaneous' has two primitive stark naked men sitting and discussing their life. One of the men has pink spots on his burnt umber body while the other man is done in shades of beige and burnt sienna.



Palemoon - Rafi Haque

In 1968, Mahabubul has a MFA in Painting from the Institute of Fine Arts, DU.

Delicate lines and dainty images are seen in Zahir Hossain Newton's 'Rhythm and Nature-2'. Here we see tiny pale yellow birds sitting on the fleshy leaves of a flowering plant.

A voluptuous figure of a woman with armlets and a beaded belt at the waist with long dark tresses,

seductive contours, and delicate features including the eyes of a gazelle, is seen in Md. Abdul Aziz's work. This is in shades of beige, burnt sienna, burnt umber and black.

Nadim Islam's 'Life-2' brings in a human skull in yellow, orange and green with hollows where the eyes and mouth had been.

Anjum Nadia depicts a landscape complete with trees, billowing clouds, a golden crescent moon, blue hills in the distance, and a group of trudging travellers in sari, carrying sticks and belongings on their heads.

With greetings from Japan

Toshiya Suzuki, a guest artist from Japan holds a solo exhibit at Zainul Gallery in the city

AZIZ AMIRUL

HE works on huge canvases, uses intensely deep shades and mingles elements of human fantasy with characteristic ideology of flora and fauna.

Tokyo-based Bangladeshi artist, G.S. Kabir, who on his own initiative, has, so far, helped exchange numerous visits of Bangladeshi and Japanese artists between the two countries.

The exhibits are based on two broad topics, firstly, on bumble bees and hives while the other on colonization of bats at Kabushima, an island in Japan.

Toshiya Suzuki, who seems to be an avid lover of nature and wildlife, fantasizes on the interior decoration of the bee-hives which he finds at the island of Kabushima.

A major portion of Toshiya's colour compositions comprise of shades of blood red zinc-oxide paint along with sparse combination of light pink, brown, ash, deep blue and black.

A series of works, titled 'Kabushima', seem to infect the viewer with an intense feeling of innate desire to delve deep into the red coloring of the subject and to blend one's inner psychic passion with the appeal of the creation.

'Palace of king bee', a work in deep red, brown and light blue that represents a combined force of royal ego, blatant inertia and conspicuous materialization of one's labour and psychic contribution.

Born in Tokyo, in 1968, Toshiya Suzuki is a graduate of Senrio Printing at Sokei Academy of Fine Arts in Japan and at present, is a freelance artist.



Palace of King bee

Since his first exhibition at Court Gallery in Tokyo in 1996, the artist has so far completed six solo displays excluding the current one in Dhaka.

This is my first visit to Bangladesh and I am very pleased to observe a high standard regarding art and artists in this small South Asian country', says a beaming Toshiya Suzuki.

The exhibition that remains open from 2 to 8 p.m. and ends today.

Poetry

City awaits grand meet

1970s poets gather to celebrate poems of their time

CULTURE DESK

EMINENT poets of the 1970s from both West Bengal and Bangladesh are participating in a poetry festival beginning from September 18 and ending on September 20, in Dhaka.

Speakers at the festival will include noted critics of poetry and prose writers of Bangladesh. Over a hundred poets will take part in the festival and will recite their poems.

A get-together has been arranged today at the hall room of National Press Club in the city to discuss matters regarding preparation of the festival. All poets in Bangladesh belonging to the 1970s are requested to join the get-together.

TV GUIDE

Table with columns for channel names (BTV, HBO, BBC World, etc.) and their respective program schedules for the day.

Table with columns for channel names (Sangeet, Fox Kids, etc.) and their respective program schedules for the day.

Table with columns for channel names (Hollywood Squares, Family Ties, etc.) and their respective program schedules for the day.

Table with columns for channel names (Hit Machine, Back to Back, etc.) and their respective program schedules for the day.

Table with columns for channel names (Geowatch Asia, Wild, etc.) and their respective program schedules for the day.

Table with columns for channel names (Nickelodeon, Zee Music, etc.) and their respective program schedules for the day.

Table with columns for channel names (World View, ALPHA TV, etc.) and their respective program schedules for the day.

Table with columns for channel names (Roif's Amazing World, Wild Discovery, etc.) and their respective program schedules for the day.

Today's Highlights and Pick of the Day section featuring movie reviews for 'Blair Witch 2' and 'My boyfriend's back' with accompanying images.