

DIHAKA NEWS, MARCH 5, 2001

| DSE Last 30 Days Price Index and Turnover | | 7 days DSE 20 Index | | Turnover Summary | | Day's Market - March 04, 2001 | |
|---|------|---------------------|------|-------------------|-----------------|---------------------------------|-------------------------------|
| Price Index | 1100 | 1100 | 1100 | SECTOR | DSE (%) CSE (%) | Indicators | DSE CSE |
| Turnover (Tk.) | 1000 | 1000 | 1000 | Bank | 15.80 8.15 | All Share Price Index | 616.16390 1345.85 |
| | | | | Investment | 0.27 0.17 | Change in Price Index | -0.1158% |
| | | | | Engineering | 5.67 7.55 | Total Turnover (Taka) | 94,729,068.50 27,696,417.75 |
| | | | | Food & Allied | 5.03 2.56 | Total Turnover (Volume) | 2,289,260 958,892 |
| | | | | Fuel & Power | 0.13 0.04 | Number of Contract | 6,679 2,345 |
| | | | | Jute | 3.27 2.42 | Total Traded Issues | 150 53 |
| | | | | Textile | 14.80 12.98 | No. of Issue Gain | 73 26 |
| | | | | Pharma & Chemical | 0.16 0.03 | No. of Issue Loss | 68 23 |
| | | | | Paper & Printing | 0.78 0.80 | No. of Unchanged Issue | 9 5 |
| | | | | Miscellaneous | 53.65 65.20 | Market Cap. (Taka) | 58,734,779,628 55,330,728,841 |
| | | | | Insurance | 0.28 | Market Cap. (US\$) | 1,087,681,104 1,024,643,127 |
| | | | | Debtenture | 0.05 | Total No. of Listed Securities | 241 165 |
| | | | | | | Total No. of Listed Companies | 221 151 |
| | | | | | | Total No. of Listed Mutual Fund | 10 10 |
| | | | | | | Total No. of Listed Debenture | 10 4 |
| | | | | | | Total No. of Share & Debtenture | 525,329,810 414,612,267 |
| | | | | | | Total Issued Capital | 30,983,455,740 26,895,487,090 |
| | | | | | | Price Earning Ratio | 9.03 9.26 |
| | | | | | | Earning Per Share (%) | 26.15 25.65 |
| | | | | | | | |

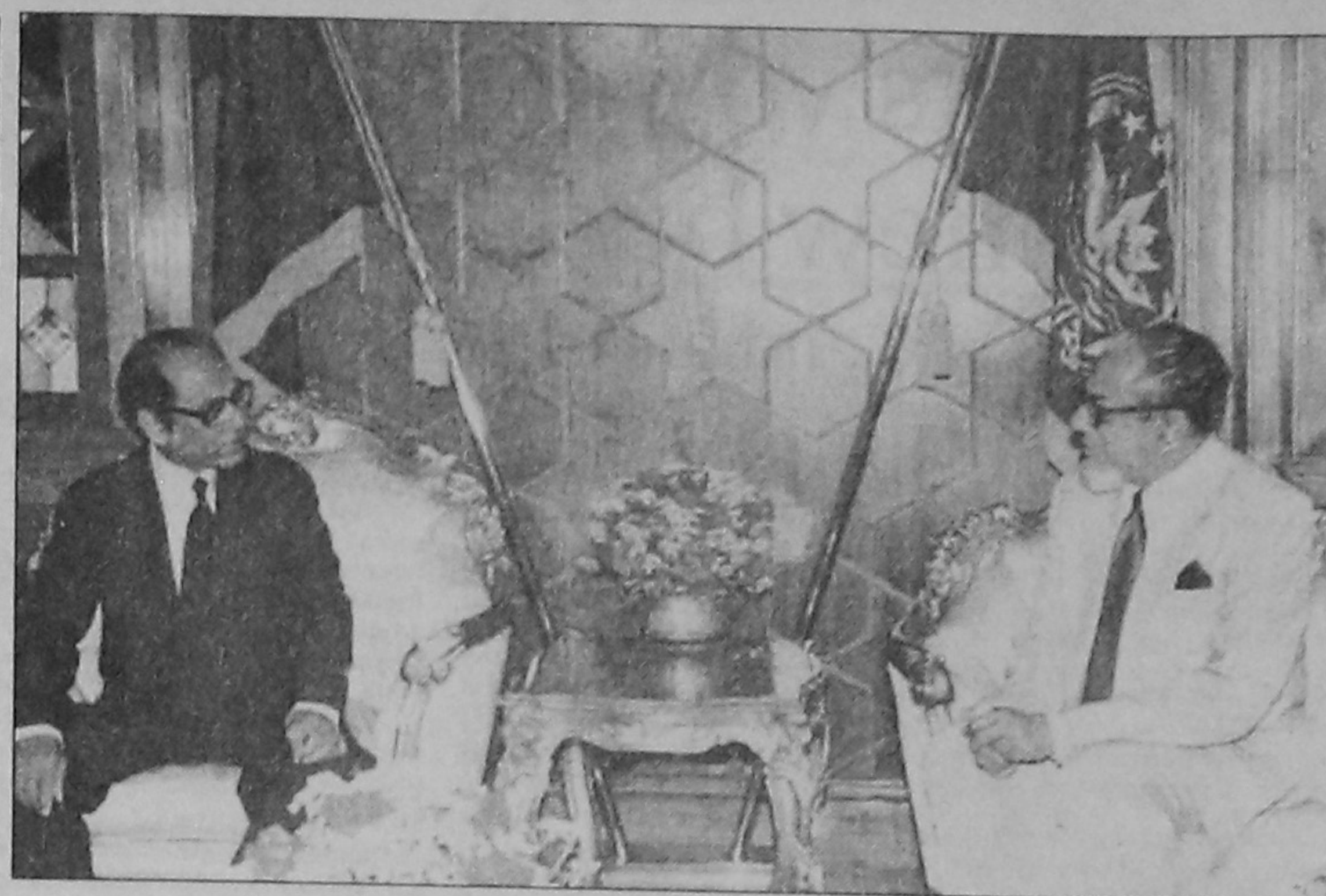
| TODAY'S TRADED ISSUES | | | | Turnover Leaders | | | |
|-----------------------------|-------------|---------------|----------------|-----------------------------|--------------|-------------|---------------------|
| Company | FV.ML (Tk.) | Price (Chg/%) | Turnover Share | Company | Vol. (share) | Value (Tk.) | Turnover % of Total |
| BANK | | | | Dhaka Stock Exchange | | | |
| ABC Bank Ltd. | 1005 | 162.00 1.73 | 159.25 | Sinobangla Industries | 716,500 | 15,691.1657 | 16.57 |
| IFIC Bank Ltd. | 1005 | 176.50 16.12 | 152,000 | Beximco Pharma | 163,350 | 9,626.1016 | 10.16 |
| Islami Bank Bangladesh Ltd. | 1005 | 121.58 25.01 | 218,875 | Nily Cement Ltd. | 32,850 | 8,934.943 | 9.43 |
| National Bank Ltd. | 10010 | 220.25 0.11 | 220,000 | Meghna Cement Ltd. | 17,200 | 6,381.674 | 6.74 |
| Rajshahi Bank Ltd. | 10010 | 98.00 9.90 | 78,250 | N C C Bank Ltd. | 36,700 | 6,080.642 | 6.42 |
| UCBL | 1005 | 108.00 1.89 | 106,000 | Rose Heaven Ball Pen | 329,000 | 4,300.454 | 4.54 |
| Utara Bank Ltd. | 1005 | 188.00 -0.53 | 189,000 | Southeast Bank Ltd. | 19,150 | 4,186.442 | 4.42 |
| Utara Finance and Inv. | 10050 | 222.00 0.00 | 222,000 | Rangpur Foundry Ltd. | 146,500 | 3,192.337 | 3.37 |
| AI Arifa Islami Bank | 1005 | 107.00 0.47 | 107,000 | Aramit Cement Ltd. | 9,900 | 2,680.284 | 2.84 |
| Prime Bank Ltd. | 10050 | 408.00 2.58 | 397,750 | Chittagong Cement | 2,065 | 2,616.276 | 2.76 |
| Southeast Bank Ltd. | 10050 | 218.50 0.00 | 218,500 | | | | |
| Dhaka Bank Ltd. | 10050 | 233.25 0.32 | 232,500 | | | | |
| N C C Bank Ltd. | 10050 | 165.50 0.15 | 165,250 | | | | |
| Social Investment Bank Ltd. | 10050 | 947.50 -0.46 | 975,000 | | | | |
| | | | | | | | |

| TODAY'S TRADED ISSUES | | | | Turnover Leaders | | | |
|-----------------------|-------------|---------------|----------------|-----------------------------|--------------|-------------|---------------------|
| Company | FV.ML (Tk.) | Price (Chg/%) | Turnover Share | Company | Vol. (share) | Value (Tk.) | Turnover % of Total |
| INVESTMENT | | | | Dhaka Stock Exchange | | | |
| 2nd ICB Mutual Fund | 1005 | 380.00 0.00 | 380,000 | Sinobangla Industries | 455,500 | 9,985.3605 | 36.05 |
| 3rd ICB Mutual Fund | 1005 | 395.00 -0.75 | 398,000 | Paragon Leather | 125,550 | 4,828.1671 | 16.71 |
| 4th ICB Mutual Fund | 10010 | 367.00 -0.27 | 368,000 | Beximco Pharma | 55,000 | 3,235.1168 | 11.68 |
| 5th ICB Mutual Fund | 10010 | 219.25 -0.57 | 218,000 | Quasem Drycells Ltd. | 64,000 | 1,037.374 | 3.74 |
| 6th ICB Mutual Fund | 10010 | 148.00 2.60 | 144,250 | Rangpur Foundry Ltd. | 47,500 | 1,036.374 | 3.74 |
| 7th ICB Mutual Fund | 10050 | 143.00 -3.16 | 147,500 | N C C Bank Ltd. | 6,200 | 1,027.371 | 3.71 |
| 8th ICB Mutual Fund | 10050 | 138.75 0.54 | 138,000 | Southeast Bank Ltd. | 3,950 | 865.312 | 3.12 |
| 9th ICB Mutual Fund | 10050 | 121.00 -0.11 | 121,750 | Chittagong Cement | 530 | 672.243 | 2.43 |
| 10th ICB Mutual Fund | 10050 | 72.00 -1.01 | 72,750 | Samata Leather | 7,450 | 559.202 | 2.02 |
| AIMS First | 12500 | 0.94 1.18 | 0.93 | Aramit Cement Ltd. | 1,600 | 462.167 | 1.67 |
| | | | | | | | |

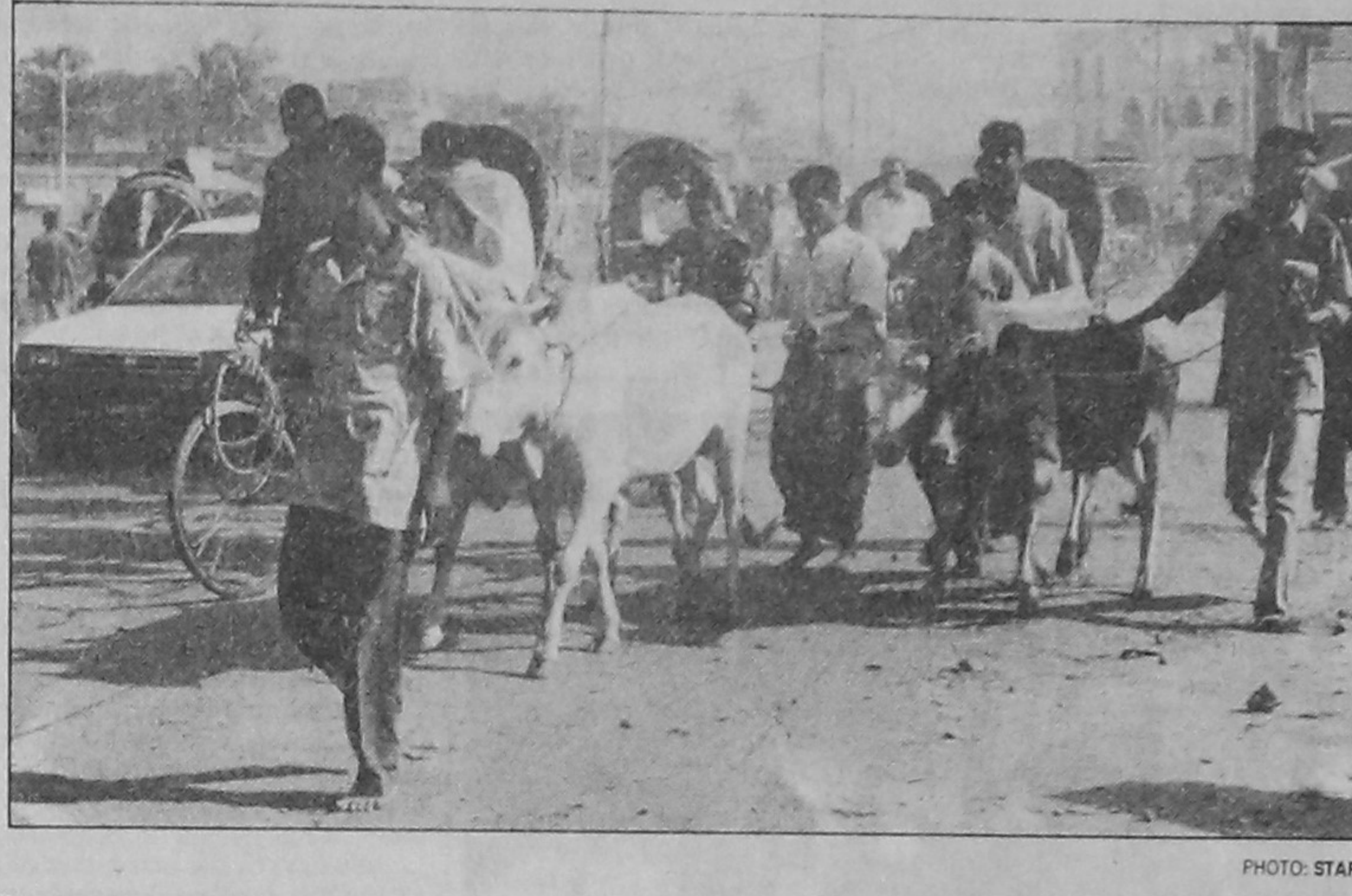
| TODAY'S TRADED ISSUES | | | | Turnover Leaders | | | |
|-------------------------|-------------|---------------|----------------|-----------------------------|--------------|-------------|---------------------|
| Company | FV.ML (Tk.) | Price (Chg/%) | Turnover Share | Company | Vol. (share) | Value (Tk.) | Turnover % of Total |
| ENGINEERING | | | | Dhaka Stock Exchange | | | |
| Afrah Automobiles Ltd. | 1005 | 204.50 0.23 | 204,000 | Sinobangla Industries | 455,500 | 9,985.3605 | 36.05 |
| Aziz Pipes Ltd. | 1005 | 25.25 -2.71 | 258,250 | Paragon Leather | 125,550 | 4,828.1671 | 16.71 |
| Olympic Industries Ltd. | 1005 | 121.25 -0.41 | 121,750 | Beximco Pharma | 55,000 | 3,235.1168 | 11.68 |
| Bangladesh Lamps Ltd. | 1005 | 50.00 0.20 | 50,000 | Quasem Drycells Ltd. | 64,000 | 1,037.374 | 3.74 |
| Eastern Cables Ltd. | 1005 | 125.25 -0.79 | 126,250 | Rangpur Foundry Ltd. | 47,500 | 1,036.374 | 3.74 |
| Singer Bangladesh Ltd. | 1005 | 118.00 0.25 | 118,200 | N C C Bank Ltd. | 6,200 | 1,027.371 | 3.71 |
| Atlas Bangladesh Ltd. | 1005 | 134.00 -2.76 | 137,500 | Southeast Bank Ltd. | 3,950 | 865.312 | 3.12 |
| Quasem Drycells Ltd. | 10050 | 16.00 0.00 | 160,000 | Chittagong Cement | 530 | 672.243 | 2.43 |
| National Tubes Ltd. | 10010 | 565.00 -0.70 | 569,000 | Samata Leather | 7,450 | 559.202 | 2.02 |
| BD Thai Aluminium Ltd. | 10010 | 140.00 -3.10 | 142,500 | Aramit Cement Ltd. | 1,600 | 462.167 | 1.67 |
| Anchor Galvanizing Ltd. | 10050 | 147.00 1.72 | 145,000 | | | | |
| Kay & Que (BD) Ltd. | 10050 | 101.00 -1.94 | 103,000 | | | | |
| Wonder Land Toys Ltd. | 10050 | 27.25 7.92 | 25,250 | | | | |
| Rangpur Foundry Ltd. | 10050 | 21.40 -1.38 | 21,700 | | | | |
| | | | | | | | |

| TODAY'S TRADED ISSUES | | | | Turnover Leaders | | | |
|-----------------------------|-------------|---------------|----------------|-----------------------------|--------------|-------------|---------------------|
| Company | FV.ML (Tk.) | Price (Chg/%) | Turnover Share | Company | Vol. (share) | Value (Tk.) | Turnover % of Total |
| PHARMA & CHEM. | | | | Dhaka Stock Exchange | | | |
| Amber Pharma | 1050 | 43.30 | Not Traded | Sinobangla Industries | 455,500 | 9,985.3605 | 36.05 |
| Beximco Pharma | 1050 | 58.60 -0.68 | 59,000 | Paragon Leather | 125,550 | 4,828.1671 | 16.71 |
| Glaxo (BD) Ltd. | 1050 | 104.00 0.56 | 104,000 | Beximco Pharma | 55,000 | 3,235.1168 | 11.68 |
| ACT Limited | 1005 | 54.20 -0.91 | 54,700 | Quasem Drycells Ltd. | 64,000 | 1,037.374 | 3.74 |
| Pharmaceuticals | 1005 | 32.00 -1.52 | 33,000 | Rangpur Foundry Ltd. | 47,500 | 1,036.374 | 3.74 |
| Reckitt Benckiser (BD) Ltd. | 1050 | 75.00 1.70 | 76,300 | N C C Bank Ltd. | 6,200 | 1,027.371 | 3.71 |
| Kolmogorov Chemical | 1005 | 10.50 1.50 | 100,000 | Southeast Bank Ltd. | 3,950 | 865.312 | 3.12 |
| Rahman Chemicals | 10010 | 20.00 6.67 | 18,750 | Chittagong Cement | 530 | 672.243 | 2.43 |
| BCL | 1005 | 136.25 -2.27 | 136,000 | Samata Leather | 7,450 | 559.202 | 2.02 |
| Beximco Invasions Ltd. | 10010 | 277.25 0.09 | 277,000 | Aramit Cement Ltd. | 1,600 | 462.167 | 1.67 |
| Libra Invasions Ltd. | 10020 | 210.00 -0.47 | 211,000 | | | | |
| Orion Invasions Ltd. | 10020 | 28.00 3.70 | 27,000 | | | | |
| Square Pharma | 10020 | 132.50 0.30 | 134,500 | | | | |
| Imam Bhaton Ltd. | 10050 | 104.25 -0.24 | 104,000 | | | | |
| Performa Chemical | 10050 | 52.25 -0.50 | 50,500 | | | | |
| | | | | | | | |

Prepared by & Copyright to BUSINESS INFORMATION AND ADVISORY SERVICES LTD. (BIASL), House # 61 (Ground Floor), Block D, Lalmonira, Dhaka. All above information are collected from daily stock quotations and companies published audited annual reports. For any query please email to: biasl@bangla.net, or call 8113431. URL: http://www.biasl.net



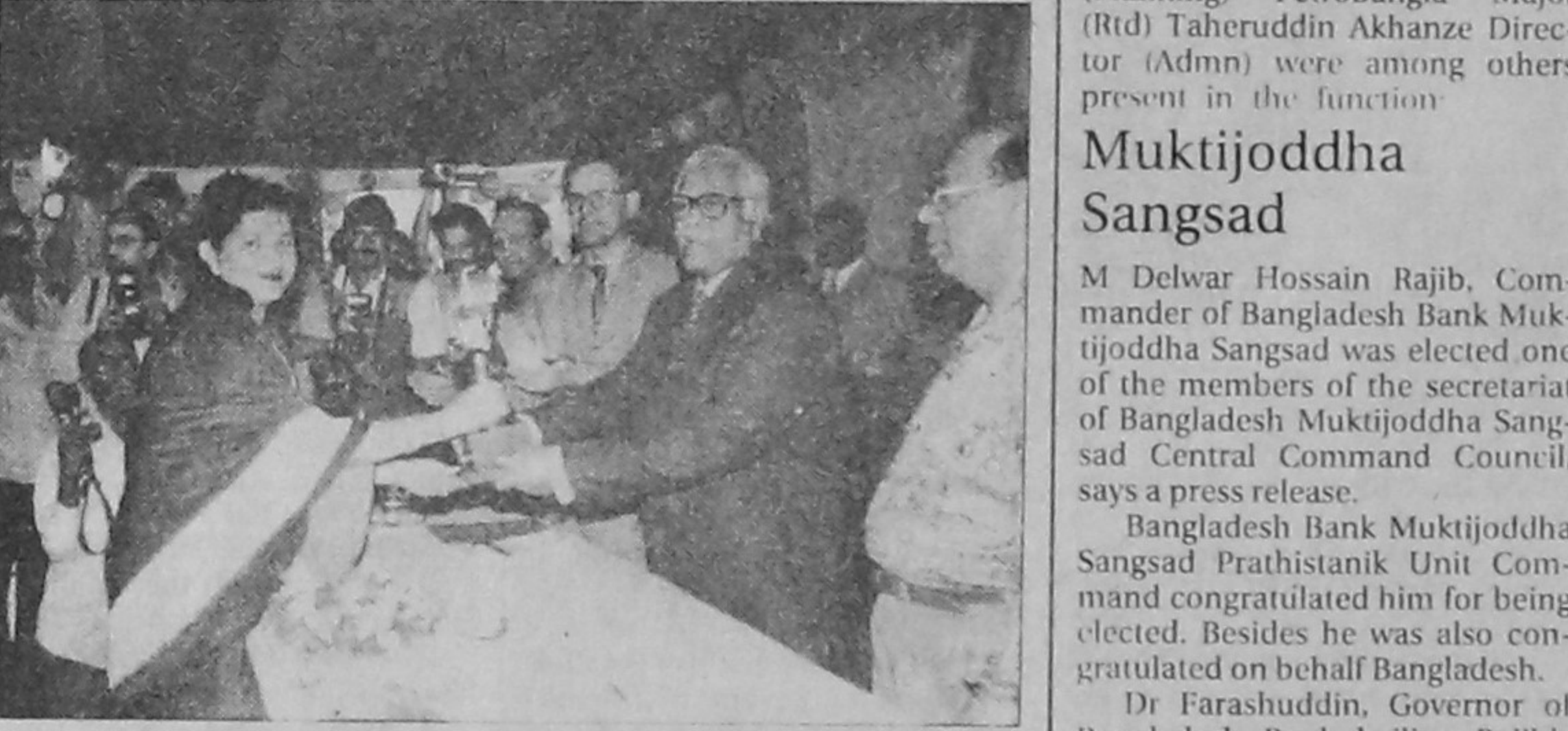
Chief Justice Mahmudul Amin Chowdhury called on President Justice Shabuddin Ahmed at Bangabhaban yesterday.



People have already started buying sacrificial animals for Eid-ul-Azha. Picture shows some people in city's Dholaihal area yesterday returning home with the cattle they have bought.



Lt Col Kazi Nuruzzaman (Retd), commander of the Freedom Fighters Council, speaking at press conference, held at the National Press Club yesterday. The conference was regarding the reunion of freedom fighters on April 27-28 to mark the 30th anniversary of the Liberation War.



Momotaz Chowdhury, Deputy Managing Director of T-Mart International Ltd, receiving the Second Best Stall Prize award in Bangladesh receiving the award from Commerce Minister Md Abdul Jalil at the concluding ceremony of the fair on Wednesday. The company was commended for their superior quality products service and decoration of stall.



Head of School and Chief Executive Officer of International School Dhaka handing over two gift hampers to Chris Williams, Treasurer of United Kingdom Annual Ball for a charity raffle at the ball recently.

Islamic Foundation confirms Eid on March 7

The holy Eid-ul Azha will be observed on March 7 (Wednesday) across Bangladesh in spite of rumours by a vested quarter about a change of date. Islamic Foundation said yesterday.

Director General of Islamic Foundation Bangladesh and National Moon Sighting Committee member-secretary Moulana Abdul Awal, in a statement, yesterday said the moon of the holy Zilhaj month was not sighted anywhere in Bangladesh on February 24 or Zilqad 29.

He said the Moon Sighting Committee has calculated a 30-day Zilqad month and decided to observe the holy-Eid-ul-Azha on March 7, which is Zilhaj 10 by the Islamic calendar.

The Moon Sighting Committee has requested the people not to pay any heed to such rumours.

Labour leader Shamsur Rahman joins BNP

Leader of the Opposition Begum Khaleda Zia yesterday expressed her optimism that the Four-Party Alliance would come to power through the next elections and then deal as per law with those responsible for the killings, repression and corruption.

Giving a brief resume of the killings, corruption, and repression during the last four and a half years, Begum Zia warned that those who would be found at fault would be put behind the bars.

Begum Zia was speaking at a function in which labour leader of the northern region, Advocate Shamsur Rahman alias Shimul Biswas, joined BNP.

Shimul Biswas, along with a large number of his followers, formally joined the BNP expressing his solidarity with the ideals of the party and vowing to work under the leadership of Begum Zia to save the country from ruination.

Begum Zia asked the government to resign and transfer power to a caretaker government to "save the country as well as the people."

Qulkhwani

Qulkhwani of Dally Rashid Hussein will be held today after Ash prayers followed by *milad mahfil* & *doas* at 113, Boro Mughbazar, in the city, says a press release.

She died on February 24.

Obituary

Amir Ali Hawlader, an Assistant Director of Manpower, Employment and Training Bureau, died of cardiac arrest in the city on March 2 at the age of 50, a bureau press release said yesterday.

He left behind his wife, two sons, two daughters, family members and a large number of relations, friends, colleagues and admirers to mourn his death.

Colleagues of late Hawlader held a special *milad mahfil* at the bureau and prayed for the eternal peace of departed soul. They also conveyed their heart-felt sympathy to the members of the bereaved family.

Erratum

The Netherlands donated an X-ray machine for the Radiology unit of the Dhaka Community Hospital recently. But in our photo caption published on March 2, the name of the donor country was inadvertently printed as Germany. We regret the mistake.

HERE & THERE

Titas Gas Officers' Welfare Association

A reunion of Titas Gas Officers' Welfare Association was held recently at the Dhaka Officers' Club at Bailey Road, says a press release.

M Mazharul Haq, general secretary of the association welcome the guests. The outset of the meeting one minute silence was observed in honour of the martyrs of the great Language Movement. Sayed Tanvir Hossain, Secretary of the Statistics Division of the Planning Ministry and the chairman of the governing body Lt Col (Retd) ASM Oluhal, Director (Planning) Petrobangla Major (Retd) Tahrudin Akhanze Director (Admin) were among the guests present in the function.

Muktijodha Sangsad

M Delwar Hossain Rajib, Commander of Bangladesh Bank Muktijodha Sangsad was elected one of the members of the secretariat of Bangladesh Muktijodha Sangsad Central Command Council, says a press release.

Bangladesh Bank Muktijodha Sangsad Prathistanik Unit Commander congratulated him for being elected. Besides he was also congratulated on behalf Bangladesh.

Dr Farashuddin, Governor of Bangladesh Bank hailing Rajib's election said that he would play due role in maintaining the quotas reserved for the offspring freedom fighters.

WEATHER TODAY

Dry weather forecast

Rain or thundershowers accompanied by temporary gusty wind is likely at one or two places over Rajshahi division and weather may remain mainly dry elsewhere over the country during the next 12 hour still 6pm today.

Little change in day temperature is expected over the country during the period, Met Offices said.

The country's highest temperature recorded yesterday was 34.7 degree Celsius at Teknaf and the lowest 12.0 degree Celsius at Sirimongol.

The sun sets in the capital today at 6:03 pm and rises tomorrow at 6:17 am.

Maximum and minimum temperature and humidity recorded in some major cities and towns yesterday were:

| City/Town | Temperature in Celsius | Humidity in percentage |
|-------------|------------------------|------------------------|
| Dhaka | 29.6 17.2 | 36 29 |
| Chittagong | 32.5 16.3 | 45 39 |
| Rajshahi | 30.6 13.8 | 39 35 |
| Kulna | 30.6 16.2 | 52 51 |
| Barisal | 31.8 15.2 | 59 55 |
| Sylhet | 28.7 16.1 | 72 47 |
| Cox's Bazar | 34.0 20.6 | 66 42 |