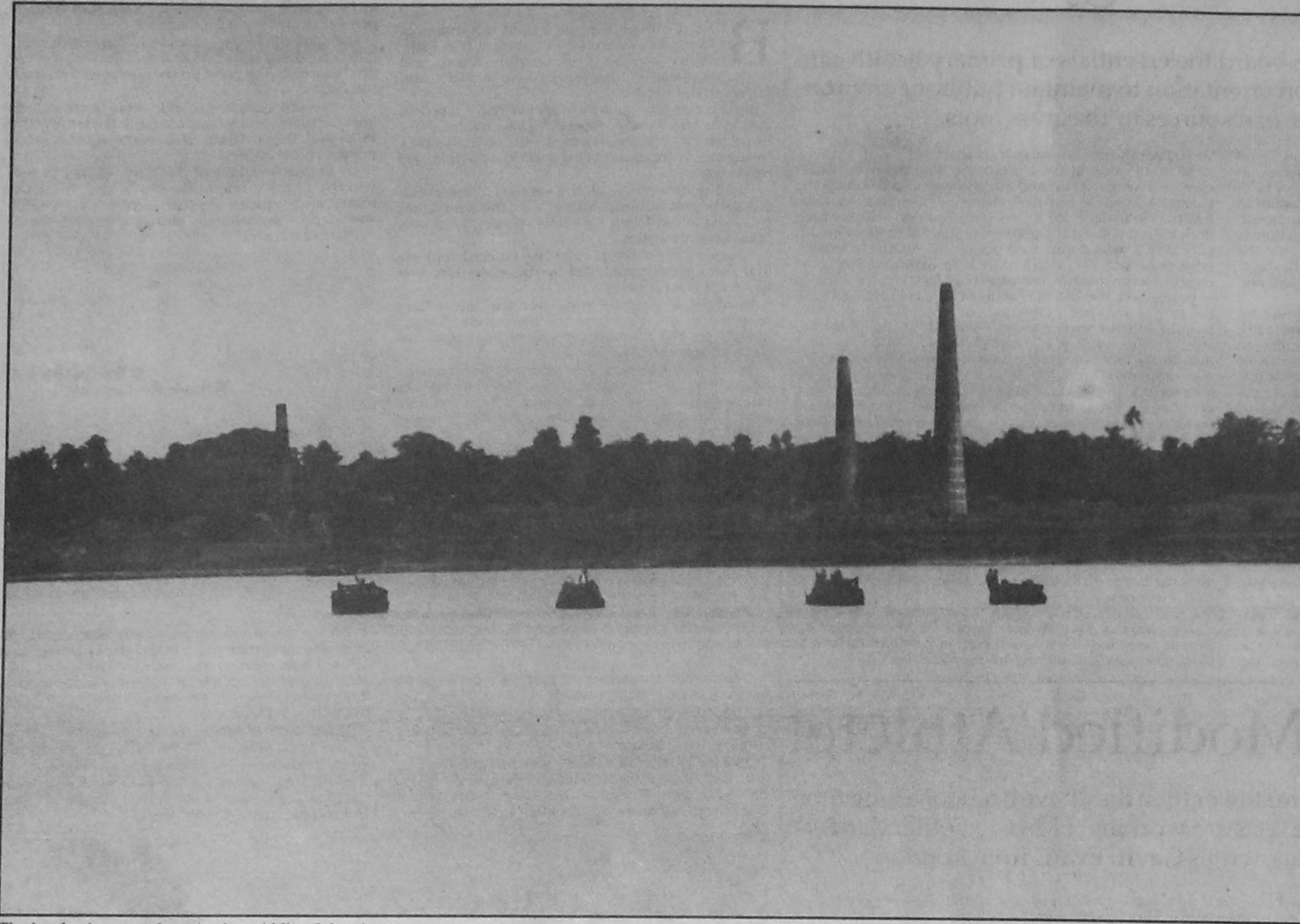


# Photo Feature

## Life on the river Ichhamoti

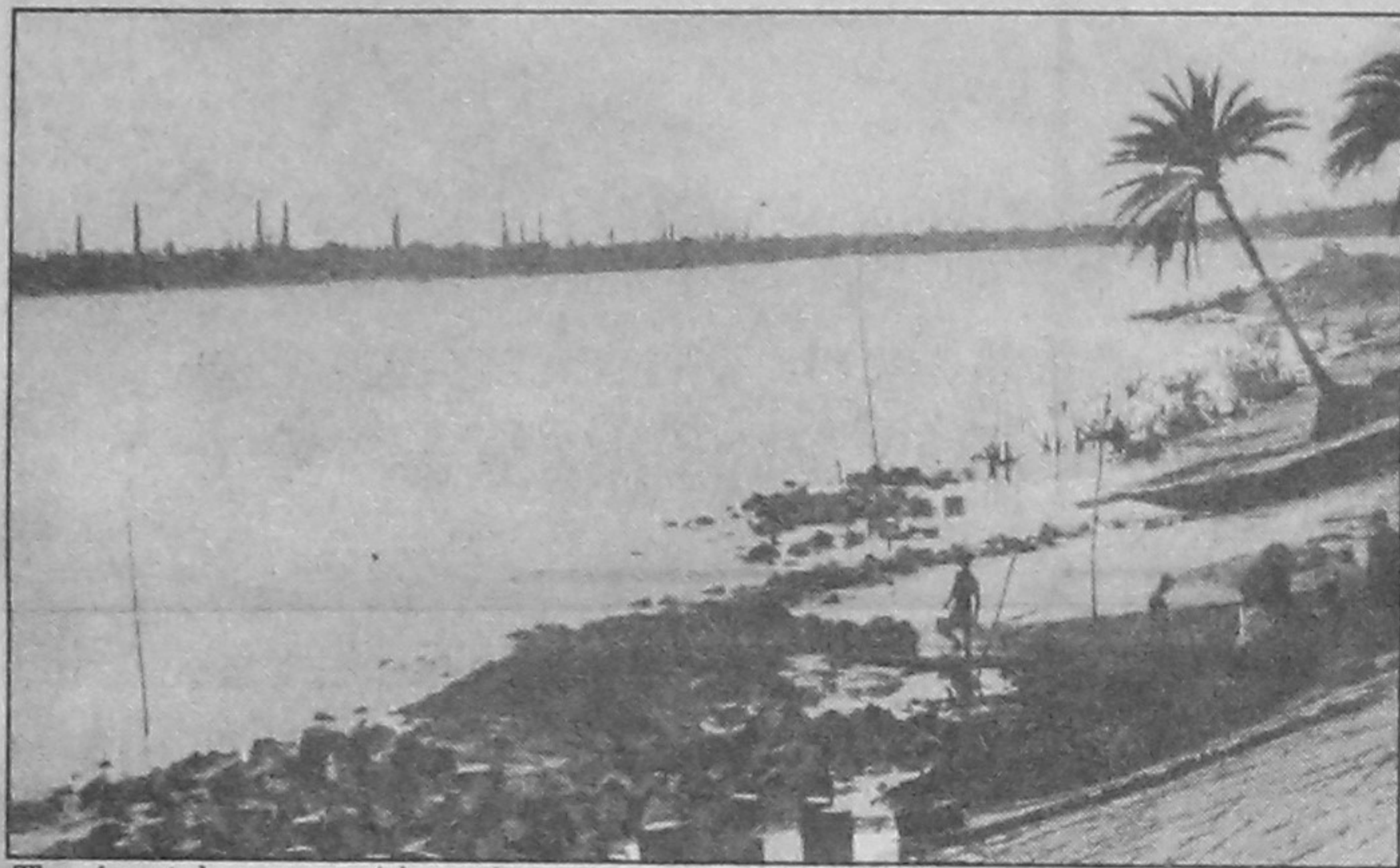


The border is somewhere in the middle of the river ...

Some 300 kilometres off the capital, on the river Ichhamoti, stands Haratda, a small village in the south-western district of Satkhira. The territorial demarcation with India goes right through the river and, in some cases, the yards of close neighbours like Shawkat and Azraf. At this part of the border, the people live with the bounty and the bane of the river. While erosion continues to leave scores of families homeless, it's the river which provides sustenance for many. On a recent visit to the border village, **AKM Mohsin** arrested in frames the fun and the fear of people living there.



... and also bifurcates the two homesteads.



The river takes away with erosion...



... but also sustains



The daily fight to fend off the wrath of the river



No Huckleberry Finns... but joy seems aplenty as smiles on these toddlers show.



BDR personnel take a break from their duty in this borderline village