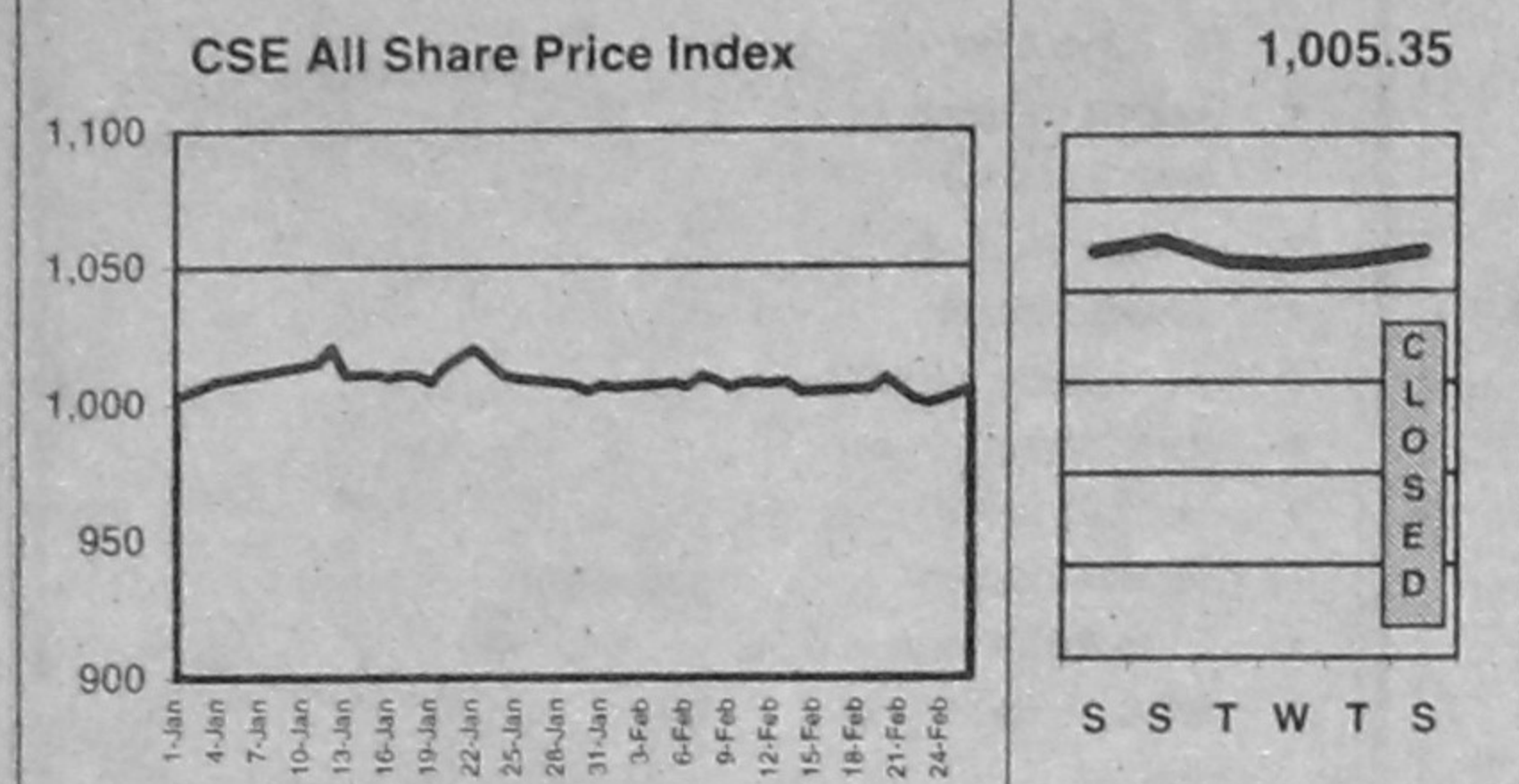
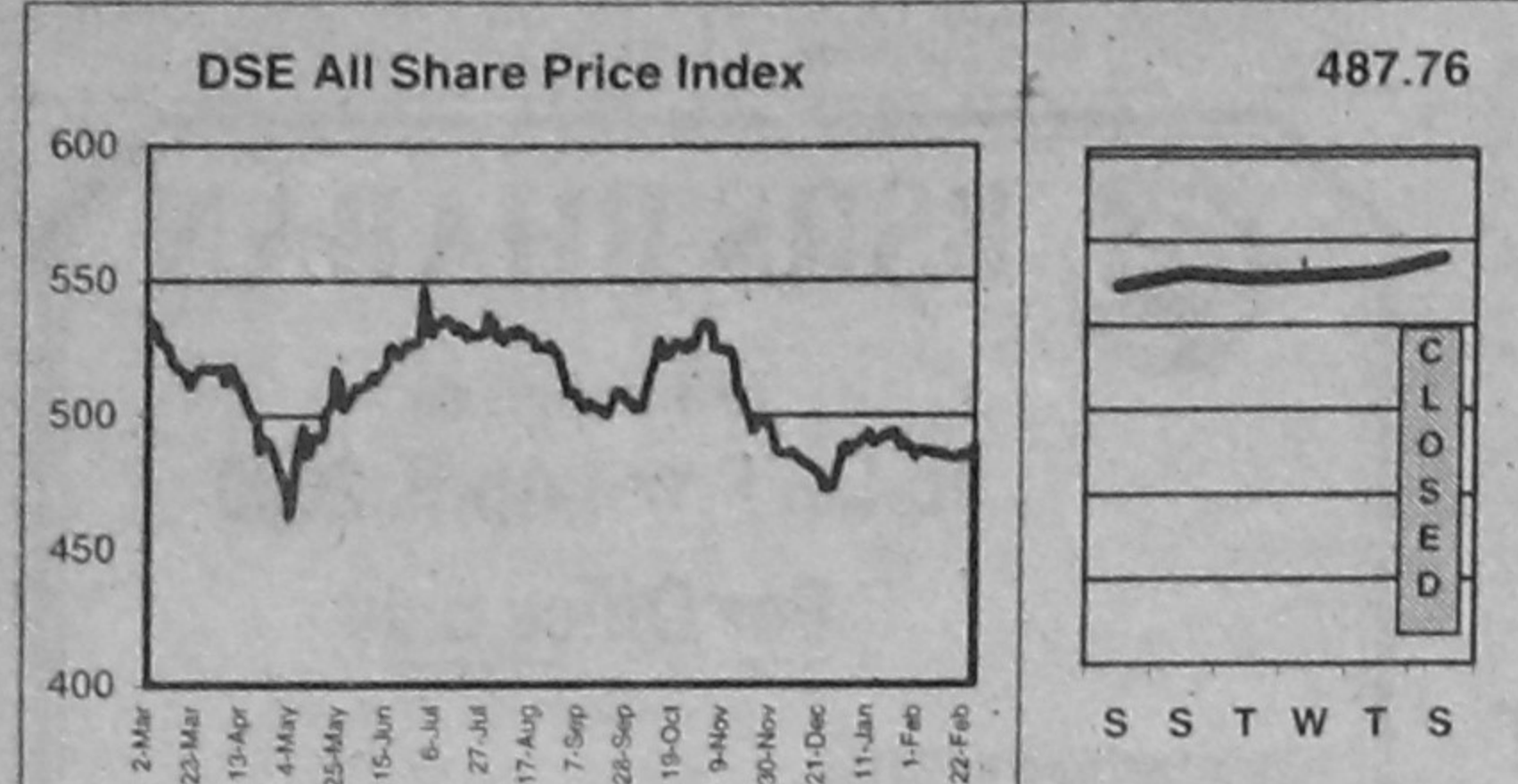


Fifty companies have been chosen for calculation of the STAR 50 Index based on their market capitalisation, liquidity, free float and corporate track record. The Base Period for the Index is August 10, 1998. The calculation has been done according to the widely used International Finance Corporation formula.



### DAY'S MARKET

February 26, 2000

	DSE	CSE
All Share Price Index	487.76	1,005.35
Change in Index (%)	1.97	3.66
Change in Index (pts)	4,468.28	6,321.49
Market Capitalisation (or Tk)	930.89	754.48
Market Capitalisation (mil US\$)	3,498	1,315
Turnover Value (or Tk)	7.12	3.34
No. of Issues Traded	150	53
No. of Issues Gained	63	22
No. of Issues Incurred Loss	62	20
No. of Issues Unchanged	25	11
Price Earning Ratio (x)	6.54	6.29
Dividend Yield (%)	7.59	7.96

### DAY'S MARKET LEADERS

#### TURNOVER LEADERS

DSE	Vol	Value	CSE	Vol	Value
	'000	Tkm		'000	Tkm
1 Ranfouny	1,133	17.33	1 Ranfouny	537	9.48
2 Bionic Sealfood	900	10.23	2 Snobangla	259	9.01
3 Legacy Footwear	431	5.81	3 Samata Leather	62	7.92
4 Snobangla	159	5.52	4 Legacy Footwear	136	1.87
5 Paper Pro	55	4.22	5 BD Welding	122	1.58
6 BD Welding	311	4.01	6 Imam Button	11	1.11
7 Samata Leather	17	2.25	7 Chit Cement	0.47	0.41
8 M Hossain Gar	28	1.77	8 Chic Tex	38	0.29
9 Square Pharma	2	1.69	9 Gachhata	6	0.23
10 Raspi Food	64	1.14	10 Delta Millers	4	0.19

#### CAPITAL GAINERS

DSE	Vol Change	CSE	Vol Change		
	'000	%	'000	%	
1 Ranfouny	1,133.00	13.33	1 Gachhata	5.50	17.36
2 EL Cornella	0.01	(6.94)	2 Apex Footwear	0.02	(5.26)
3 BECMCO	0.01	(5.68)	3 M Hossain Gar	0.65	(3.53)
4 City Bank	0.01	(4.17)	4 ArimaVam	0.05	(3.19)
5 Ramick Jaj	0.15	(3.49)	5 Imam Button	2.00	(1.95)
6 M Hossain Gar	28.45	(3.11)	6 Arami Ltd	2.30	(1.95)
7 Tepek Ind	7.77	(2.94)	7 Monno Cera	0.02	(1.59)
8 GEM Knit	2.60	(2.85)	8 Rose Heaven	0.50	(1.44)
9 Paper Pro	55.10	(2.24)	9 Excelsior Shoe	0.10	(1.43)
10 National Oxygen	0.20	(2.18)	10 Eagle Star Tex	11.95	(1.19)

#### CAPITAL LOSERS

DSE	Vol Change	CSE	Vol Change		
	'000	%	'000	%	
1 Federal Ins	0.30	(13.69)	1 BCIL	0.05	(18.13)
2 EL Cornella	0.01	(6.94)	2 Apex Footwear	0.02	(5.26)
3 BECMCO	0.01	(5.68)	3 M Hossain Gar	0.65	(3.53)
4 City Bank	0.01	(4.17)	4 ArimaVam	0.05	(3.19)
5 Ramick Jaj	0.15	(3.49)	5 Imam Button	2.00	(1.95)
6 M Hossain Gar	28.45	(3.11)	6 Arami Ltd	2.30	(1.95)
7 Tepek Ind	7.77	(2.94)	7 Monno Cera	0.02	(1.59)
8 GEM Knit	2.60	(2.85)	8 Rose Heaven	0.50	(1.44)
9 Paper Pro	55.10	(2.24)	9 Excelsior Shoe	0.10	(1.43)
10 National Oxygen	0.20	(2.18)	10 Eagle Star Tex	11.95	(1.19)

### LEAGUE TABLE

Company Name	Market Performance										AGM				Financial Performance					
	Dhaka Stock Exchange					Chittagong Stock Exchange					Year End	Date	EPS	PE	DPS	Yield	NAV per Share	Price NAV		
	Vol	Day's High	Day's Low	Day's Closing	Prev. Closing	Net Chg	Vol	Day's High	Day's Low	Day's Closing									Prev. Closing	Net Chg
Apex Weaving	10000	150	41.50	41.50	41.50	41.75	0.25	150	41.25	41.00	41.25	996	20/12/99	1.87	10.00	2.37	15.00	13.76	188.95	0.89
Apex Textile	10010	150	16.10	16.10	16.10	16.10	0.00	150	16.10	16.10	16.10	996	20/12/99	4.34	2.08	11.00	15.12	118.19	0.66	
Apex Textile	10010	8,800	16.10	16.10	16.10	16.10	0.00	1,800	16.10	16.10	16.10	996	20/12/99	4.34	2.08	11.00	15.12	118.19	0.66	

### Pharma & Chemical

Apex Pharma	10050	27,750	30.10	29.70	29.70	29.50	0.20	1,750	29.80	29.50	0.00	9912	20/12/99	3.28	9.11	2.50	8.42	20.87	0.96
Bangla Pharma	10055	15	87.50	87.50	87.50	87.50	0.00	15	87.50	87.50	0.00	9906	30/12/99	1.04	31.06	1.00	3.10	11.51	2.81
BCIL	10010	290	69.75	68.50	68.50	69.25	0.75	60	65.50	60.00	(4.50)	9906	17/12/98	12.85	5.37	10.00	14.49	148.68	0.12

### Paper & Printing

Azadi Printing	10010							77.75				9906	28/12/99	3.62	21.55				100.59	0.77
Eagle Box	10050							34.70				9906	29/12/99	1.24	2.88				675.40	0.28
MAO Enterprises	10050							35.25				9912	21/12/99	1.24	2.88				675.40	0.28

### Miscellaneous

Apex Footwear	10020	980	123.00	128.00	128.25	129.75	(1.50)	20	126.00	133.00	(7.00)	9912	15/4/99	2.78	46.13				210.02	0.41
Apex Textile	10010	770	119.50	119.00	119.00	120.00	(1.00)	340	121.00	120.50	(0.50)	9906	5/12/98	6.13	28.81				410.07	0.29
Arani	10050	12,650	41.00	39.50	40.00	40.75	(0.75)	2,350	40.00	41.00	(0.50)	9912	30/12/99	3.25	12.27	2.50	6.25	28.56	1.51	

### Services & Real Estate

BD Hotel	10050											9912	22/12/99	8.03	3.20				37.10	
BD Services	10050											9912	24/12/98	12.22	11.00				37.10	
Eastern Housing	10020	600	109.00	108.50	108.50	108.75	(0.25)	100	108.75	108.75	0.00	9907	23/12/98	14.84	7.41	12.00	11.06	129.55	0.84	

### Insurance

BD Insurance	10010	140	134.00	133.00	133.50	137.75	0.75	129.00				9912	9/9/99	25.22	9.31	20.00	8.52	239.59	0.98
Delta Life Insurance	10050	10	515.00	515.00	515.00	518.25	1.75	350.00				9912	30/9/99	61.32	2.11	25.00	13.31	178.96	0.71
Eastern Insurance	10020	80	154.00	153.00	153.75	155.00	0.75	204.00				9912	28/8/99	28.63	5.77	20.00	13.01	156.06	0.89

### DEBENTURE

Name	Nature of Debenture	Year of Maturity	Date of Conversion	Interest Due	FV/ML	Day's Closing Price
				Tk/Nos		DSE CSE
Arami Cement	14%, 20% Convertible, 80% Redeemable	1998	September, 2008	Mar, Sep 2500/2		1,959.50
BD Luggage	14%, 20% Convertible, 80% Redeemable	1999	September 5, 2003	September 5, 1998		1,885.00
BD Welding	15%, 20% Convertible, 80% Redeemable	1996	July 15, 2006	Mar, Jan 2500/2		
BD Zipper	14%, 20% Convertible, 80% Redeemable	1995	August 1, 2002	August 1, 1997		
Beximco Denims	14%, 100% Redeemable	1995	July 10, 2005	Feb, Aug 1400/2		
Beximco Fisheries	14%, 100% Redeemable	1994	May 1, 2004	Jan, Jul 1928/5/1		
Beximco Infusion	17%, 100% Redeemable	1992	October 31, 2000	Oct, Apr 400/2		
Beximco Synthetics	14%, 100% Redeemable	1993	September 1, 2003	Mar, Sep 1426/2		
Beximco Textile	14%, 100% Redeemable	1995	July 1, 2005	Jan, Jul 1963/2		
Beximco Knitting	14%, 20% Convertible, 80% Redeemable	1994	July 1, 2004	Jan, Jul 1540/2		

### COMPANY CALENDAR

Company	Declaration		Book Closure		AGM/EGM		Company		Declaration		Book Closure		AGM/EGM	
	Year	Div/Bon/Right	From	To	Date & Time	Venue	Year	Div/Bon/Right	From	To	Date & Time	Venue		
Rajshahi Bank	9906	25%	18/2/2000	11/3/2000	11/3/2000 11:30am	BCIC Auditorium, Sakbarhat Rd, Ctg.	Rahim Tex	9906	13/3/2000	27/3/2000	27/3/2000 11am	Sohag Com Centre		
Padma Oil	9906	50%	10/2/2000	23/2/2000	23/2/2000 11am	Shanahan Hotel								
Be. Synthetics Deb			15/2/2000	29/2/2000										
BD Luggage Deb			17/2/2000	4/3/2000										
Arani Cement Deb			23/2/2000	29/2/2000										
Alpha Tobac	9908	42.5% F	22/3/2000	29/3/2000	29/3/2000 11:45pm	Factory Premises								
Umanias Glass	9906	10%												
Tulip Dairy	9906		20/2/2000	5/3/2000	5/3/2000 10am	Ladies Club, Easton								
Glaxowell	9912	3.25% F												
Raspi	9712	11%	10/4/2000	20/4/2000	20/4/2000 3pm	Patna								
M Hossain	9906	5%	5/3/2000	11/3/2000	11/3/2000 10am	R. Fabrics Premises								
Prime Textile	9906		10/3/2000	25/3/2000	25/3/2000 11am	Factory Premises								

### NOTES

FV/ML	Face Value / Market Lpts	Vol	Volume	PE (x)	Price/Earning (Times)	Price/NAV(x)	Price/Net Asset Value (Times)	Avg.	Average	Nos.	Numbers
Tk/Nos	Total Number of Shares	EPS	Earning Per Share	DPS	Dividend Per Share	Tkm	Taka to Million	Prev.	Previous	Chg.	Change
9906	26/12/99	2.71	36.90			103.44					
9906	29/12/99	(329.82)				822.29					
9906	3/10/99	29.55	4.23	15.00	12.00	724.38					
9906	25/12/99	(36.18)				3.58					
9906	25/12/99	(35.51)				4.95					
9906	29/12/99	0.01	1,300.00			110.43					
9906	29/12/99	92.23	1.71			257.25					
9906	29/12/99	10.13				86.07					
9906	29/12/99	12.27	3.81			135.08					
9906	9/11/99	17.96	5.10	12.00	12.90	113.19					
9906	29/12/99	25.78	3.76	10.00	10.47	168.35					