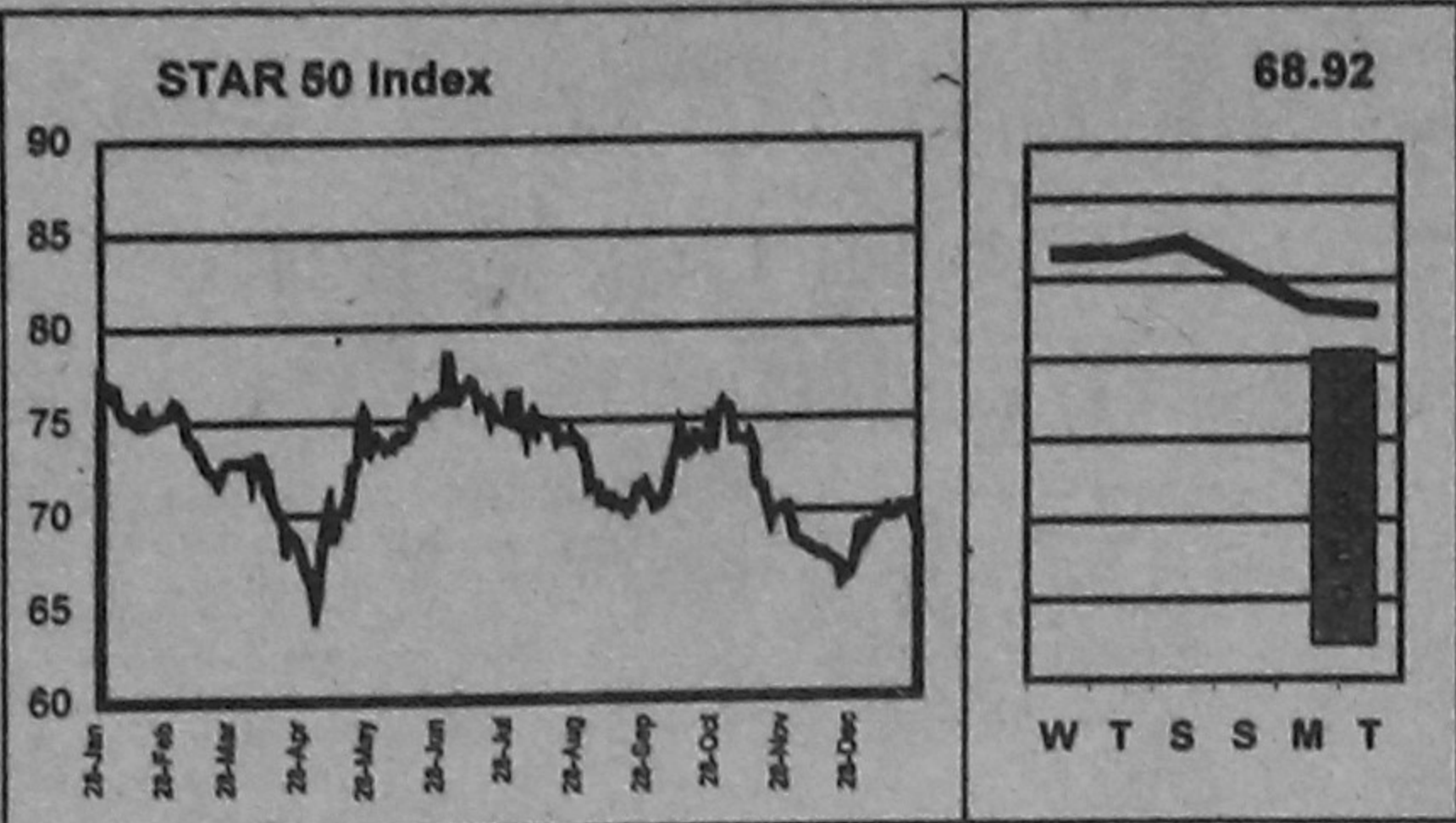


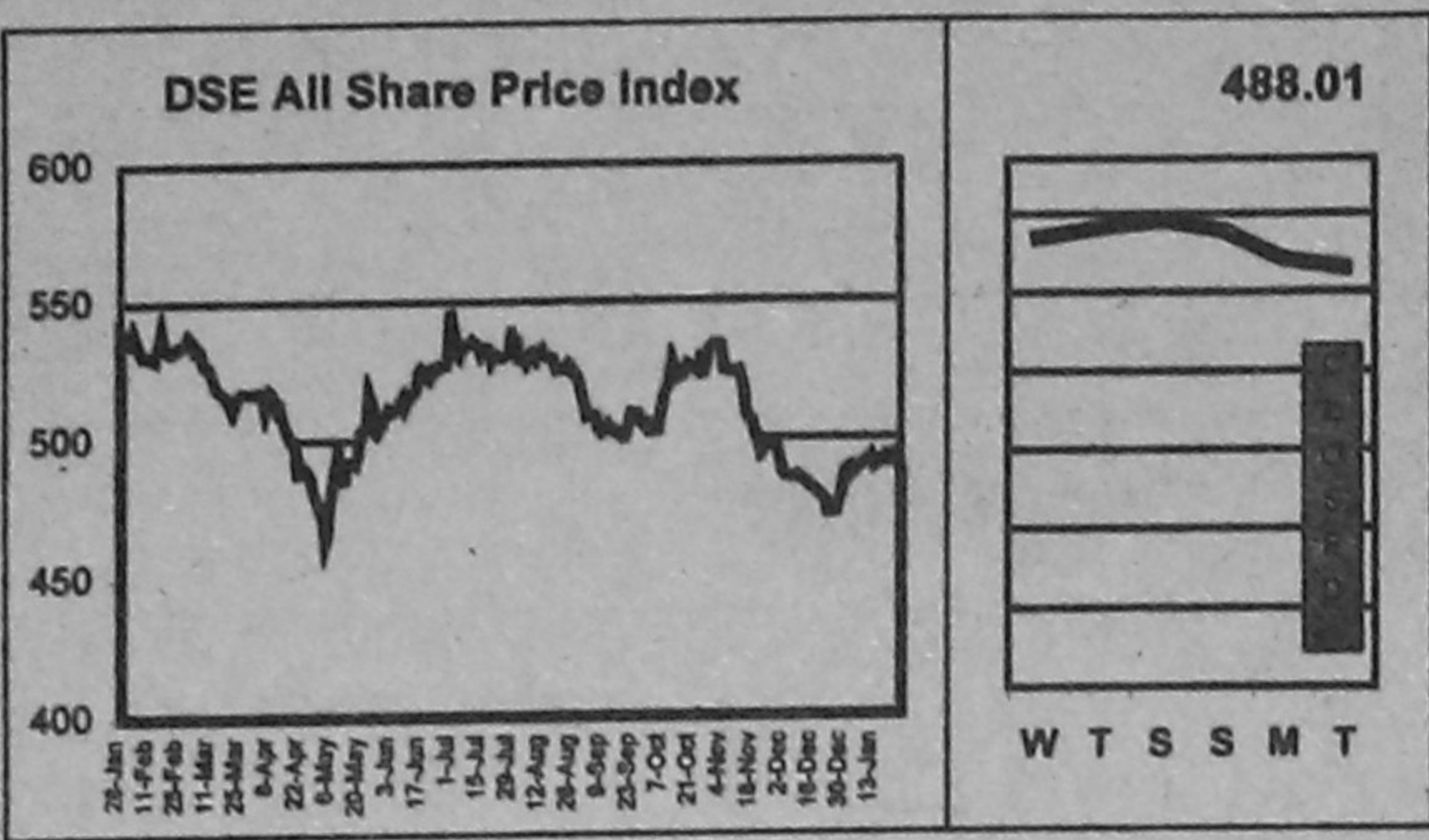
The Daily Star BUSINESS



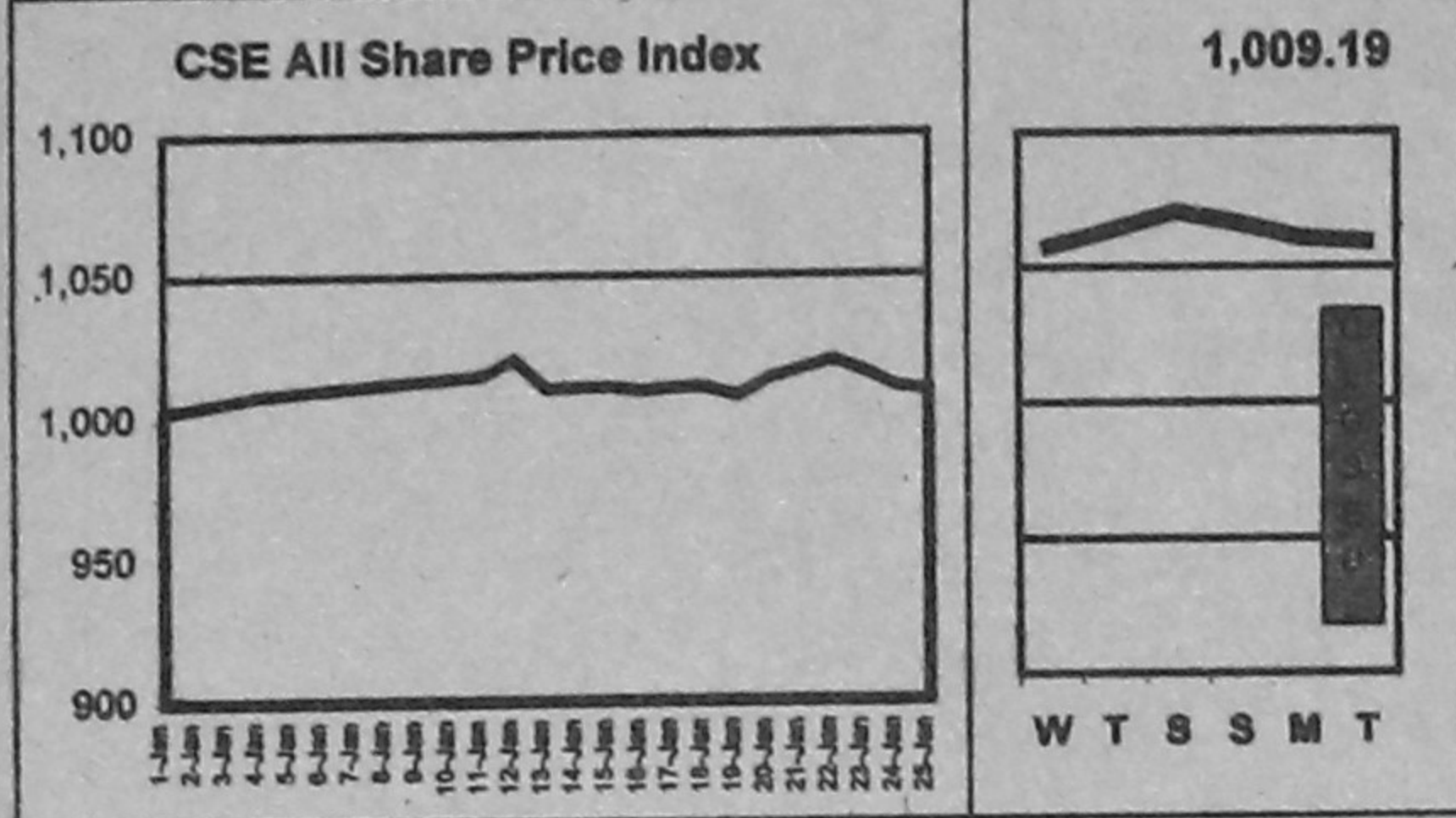
DAY'S MARKET January 25, 2000. Summary of market indices: DSE 488.01, CSE 1,009.19.

Fifty companies have been chosen for calculation of the STAR 50 Index based on their market capitalisation, liquidity, free float and corporate track record.

DAY'S MARKET LEADERS. Lists top performing stocks like Samata Leather, Monopool, and Uttara Bank.



TURNOVER LEADERS. Lists companies with highest turnover like Samata Leather, Monopool, and Uttara Bank.



CAPITAL GAINERS. Lists companies with significant price increases like Samata Leather, Monopool, and Uttara Bank.

CAPITAL LOSERS. Lists companies with significant price decreases like NBL, HR Text, and Rupali Ins.

LEAGUE TABLE. Comprehensive table listing market performance and financial data for various companies across sectors like Banks, Engineering, Food & Allied, etc.

LEAGUE TABLE. Market Performance. Dhaka Stock Exchange and Chittagong Stock Exchange. Lists companies like Apex Weaving, Aches Textile, and others.

Paper & Printing. Lists companies like Apex Printing, Eagle Box, and MAQ Enterprises.

Services & Real Estate. Lists companies like BD Hotel, BD Services, and Eastern Housing.

Miscellaneous. Lists companies like Apex Footwear, Apex Textiles, and others.

Insurance. Lists companies like Central Insurance, Delta Life Insurance, and Eastern Insurance.

DEBENTURE. Lists companies and details of their debentures, including nature, year of maturity, and conversion dates.

COMPANY CALENDAR. Lists company events such as AGMs and general meetings for various companies.

NOTES. Provides definitions and formulas for various financial metrics like FV/ML, TK/No, and P/E.