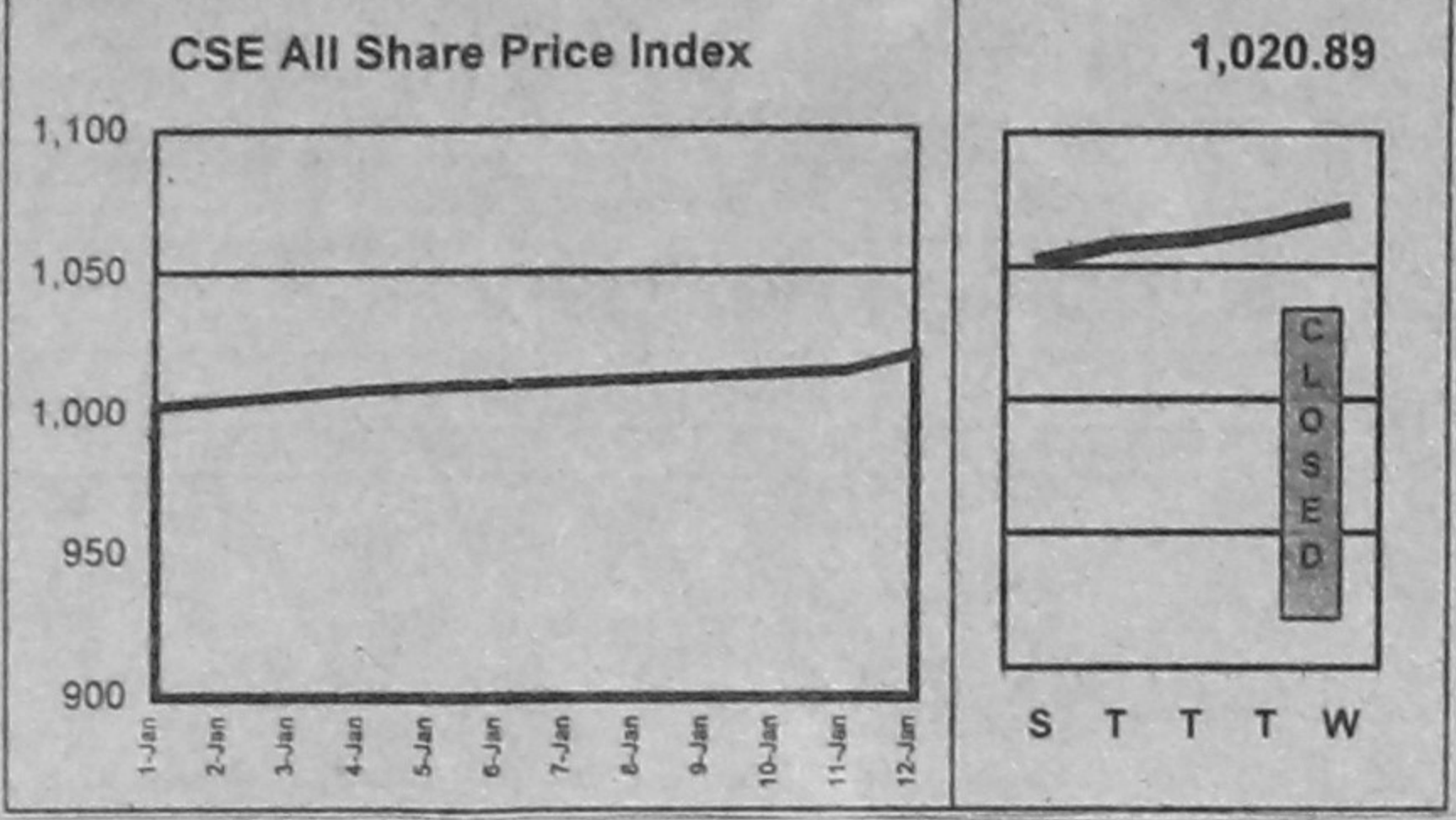
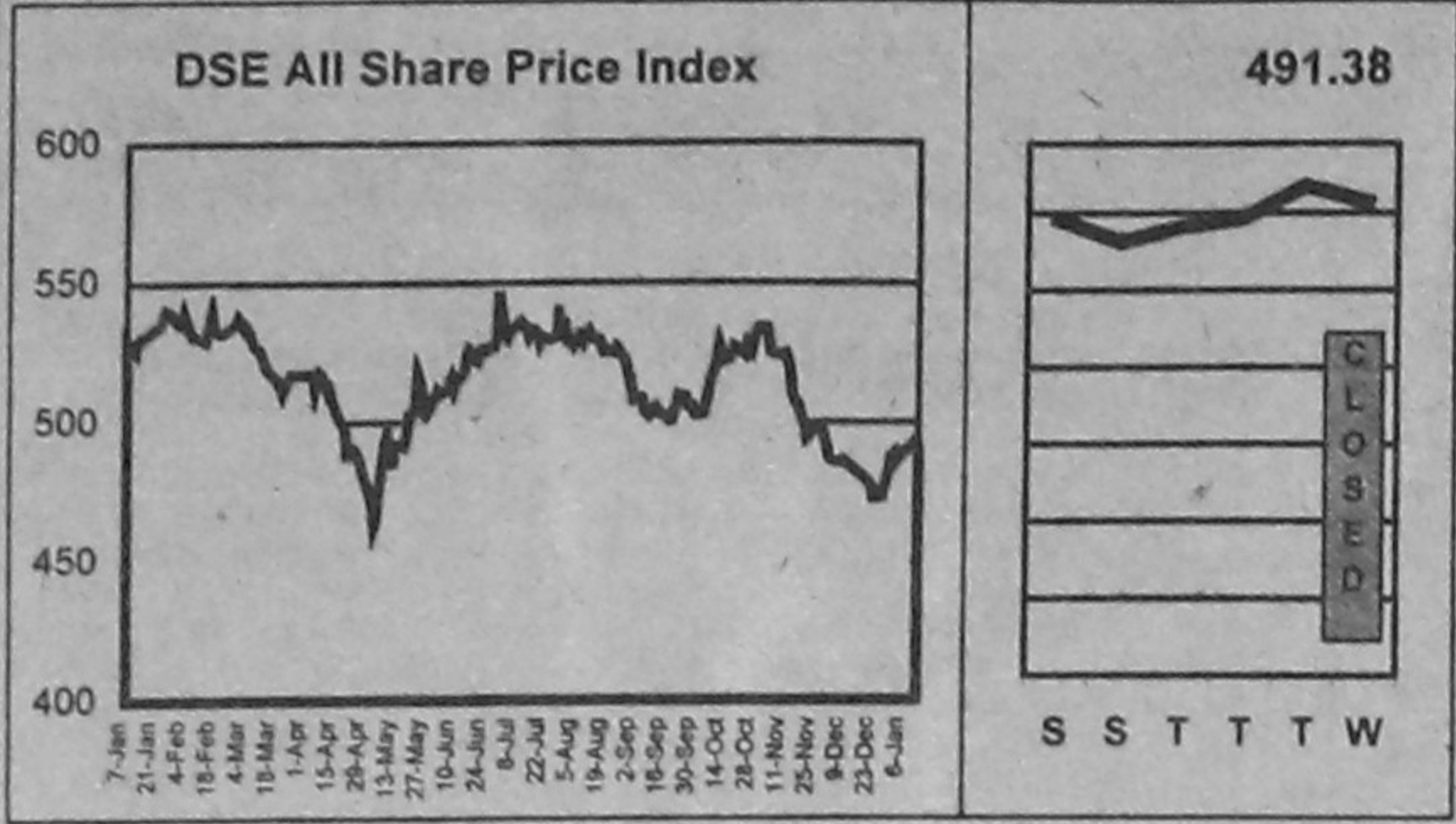


Fifty companies have been chosen for calculation of the STAR 50 Index based on their market capitalisation, liquidity, free float and corporate track record.



DAY'S MARKET January 12, 2000. Summary of market indices: DSE 491.38 (2.14), CSE 1,020.89 (6.10). Market Capitalisation (Cr Tk) 4,468.40 (0.43%).

DAY'S MARKET LEADERS. TURNOVER LEADERS table listing top companies like Samata Leather, Sinobangla, and Sajib Knit with their turnover figures.

CAPITAL GAINERS table listing companies like Modern Ind, 4th ICB M Fund, and UCBL with their percentage gains.

CAPITAL LOSERS table listing companies like Paper Pro, City Bank, and Peoples Ins with their percentage losses.

LEAGUE TABLE. Comprehensive table listing market performance for Dhaka and Chittagong Stock Exchanges, AGM dates, and financial performance metrics for various companies.

LEAGUE TABLE (continued). Detailed table listing market performance for Dhaka and Chittagong Stock Exchanges, AGM dates, and financial performance metrics for various companies.

DEBENTURE table listing details for various debentures including Name, Nature of Debenture, Year of Float, Date of Maturity, Date of Conversion, Interest, and Day's Closing Price.

COMPANY CALENDAR table listing AGM dates, declarations, and book closures for various companies like BOC, Sandhani Ins, and Rose Heaven.

NOTES table providing definitions for financial ratios and metrics such as FV/M, TK/NOs, Face Value, and Market Price.